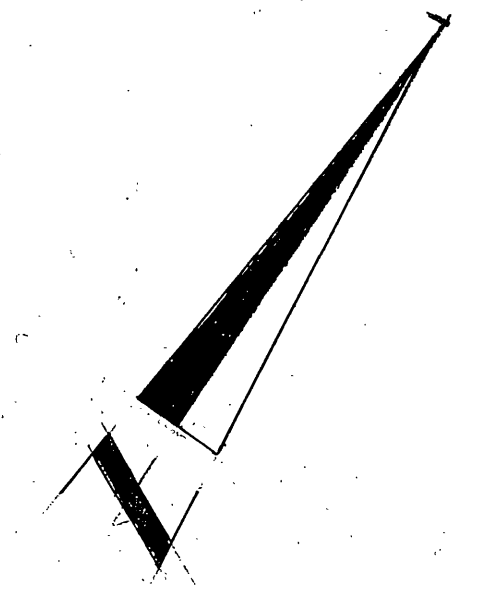
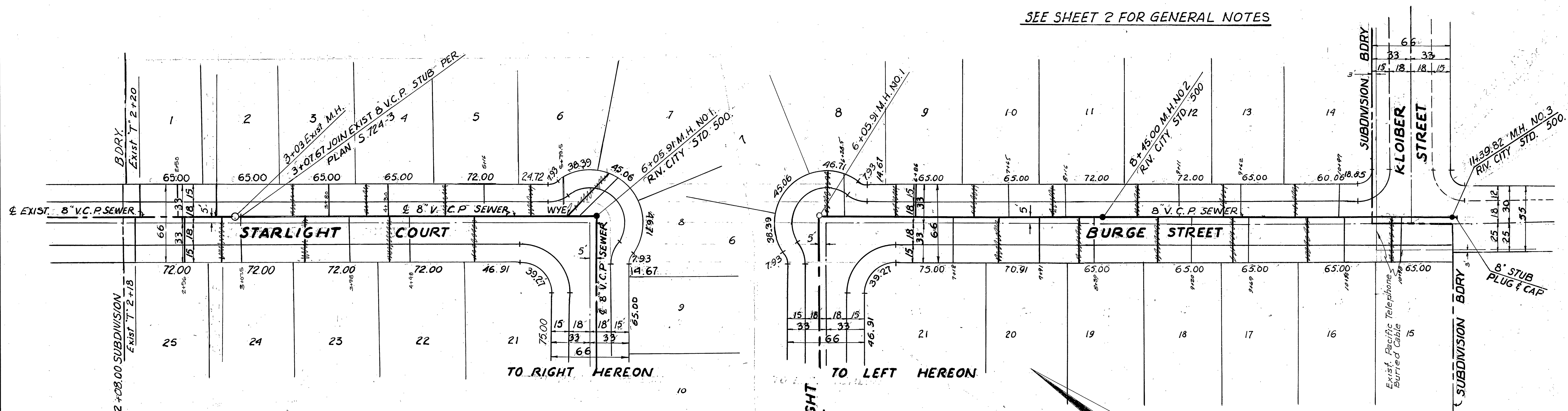


SEE SHEET 2 FOR GENERAL NOTES



TECHNOLOGICAL ENGINEERING CORP.
 4921 DURFEE AVE., PICO RIVERA, CALIF.
 699-1043 723-8891
 J.A. PATTERSON R.C.E. 10410 DATE 5-29-69

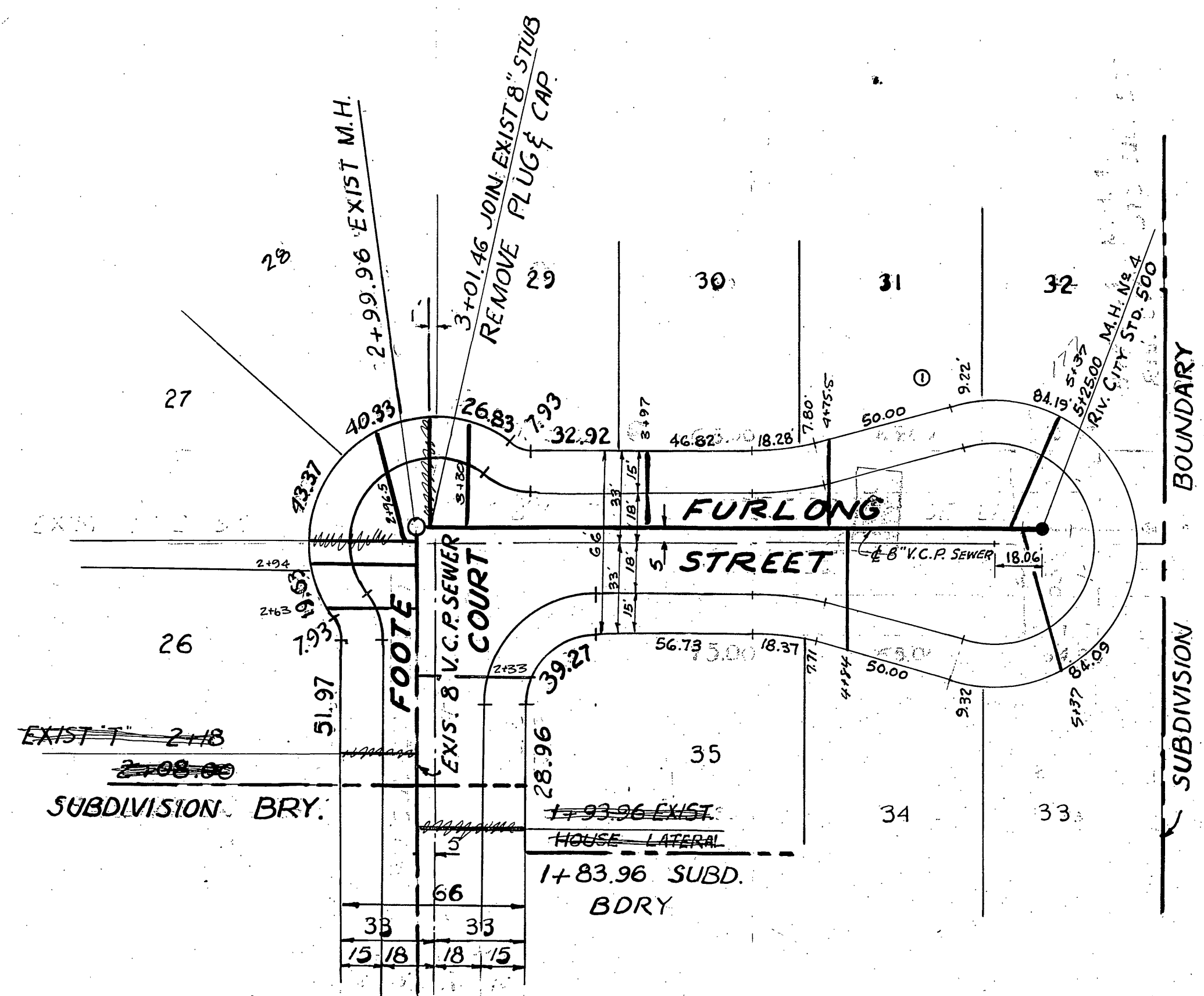
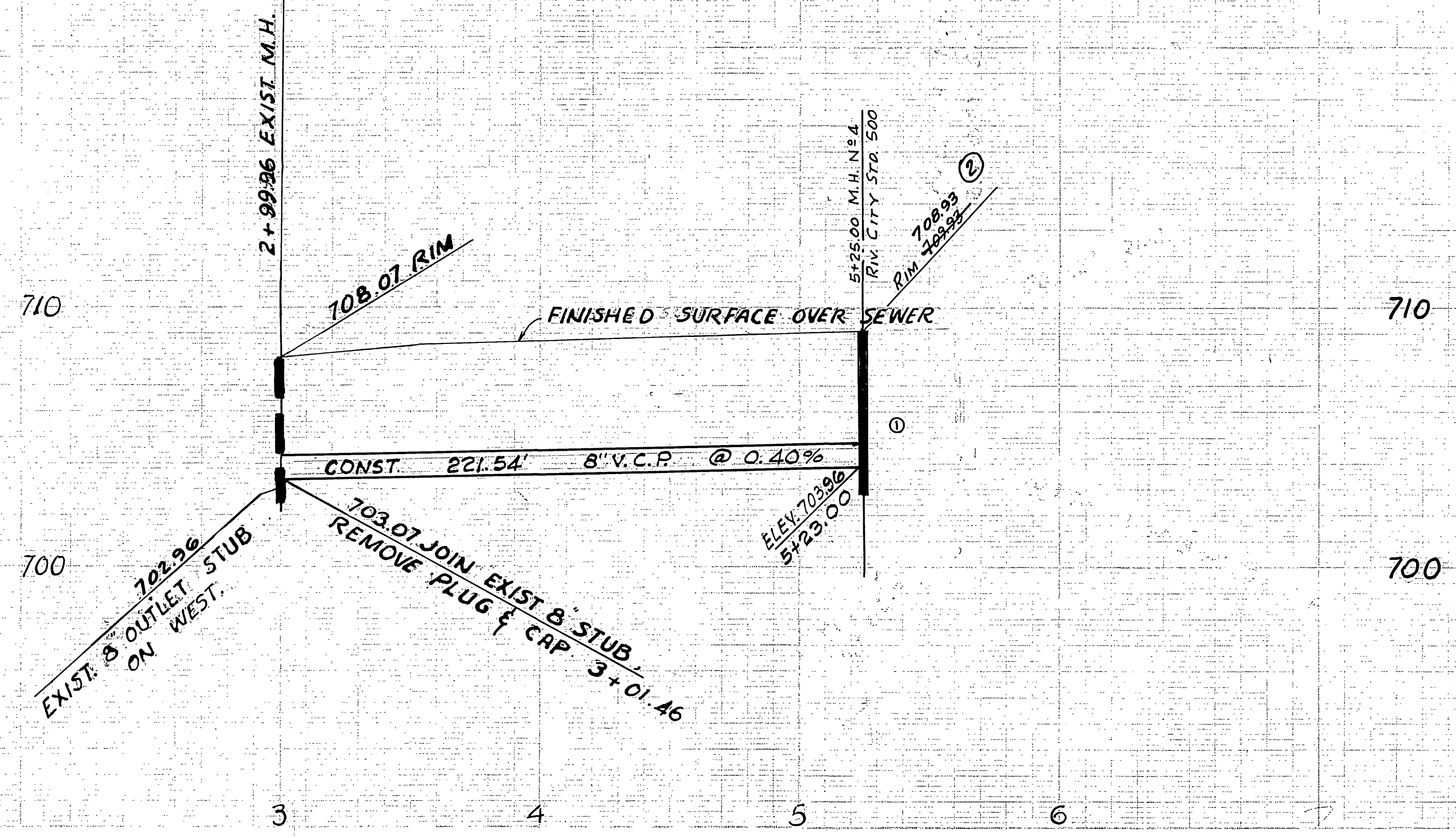
CITY OF RIVERSIDE, CALIFORNIA
 DEPARTMENT OF PUBLIC WORKS
 APPROVED BY: [Signature] DATE: 10/30/69
 OFFICE ENGINEER: [Signature] DATE: 10/27
 PARK DEPARTMENT: [Signature]
 TRAFFIC DIVISION: [Signature]
 ASSISTANT CITY ENG. [Signature]

BENCH MARK EL. 703.93
 RIVERSIDE COUNTY B.M. NO. 7
 CHISELED 'X' ON S.E. COR. OF BOTTOM CONC.
 STEP AT MAIN ENTRANCE TO CHURCH ON N.W.
 COR. OF HOLE AVE. & JONES AVE.

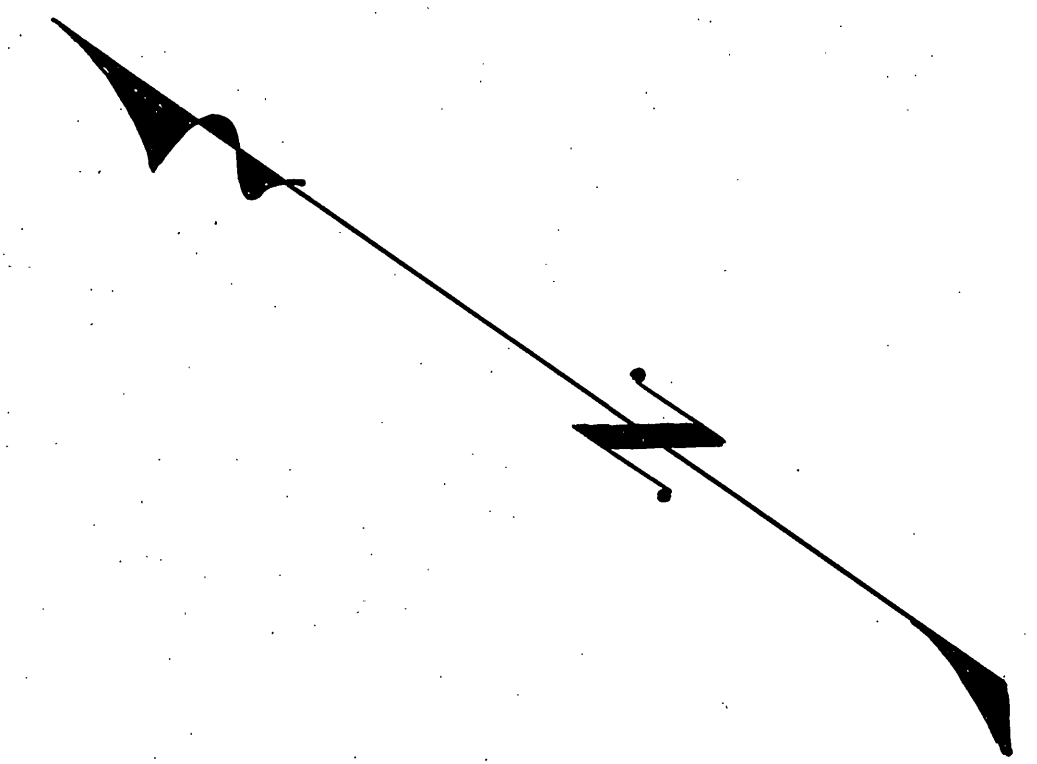
SEWER IMPROVEMENTS
 TRACT NO. 4279
 STARLIGHT COURT
 FROM: 300' ELY OF SKOFSTAD STREET
 TO: BURGE STREET
 BURGE STREET
 STARLIGHT COURT
 TO: KLOIBER STREET

PROJECT NO.
 S-776
 SHEET 1 OF 2
 FILE NO.

HORIZ. SCALE: 1" = 40' VERT. SCALE: 1" = 4'



- GENERAL NOTES:**
1. Construction shall be in accordance with the City of Riverside Dept. of Public Works Standard Specification No. 461 and Standard Drawings.
 2. It shall be the responsibility of the contractor to clear the right-of-way in accordance with the provisions of the law as it affects each utility including irrigation lines and appurtenances and at no cost to the City of Riverside.
 3. Joints shall be in conformance to A.S.T.M. Specifications C-425-64 Type I or III or to A.S.T.M. Specifications C-594-66T (Band Seal) with certain exceptions on file with the City Engineer.
 4. Pipe shall be bedded per Case 1, Standard Drawing No. 452, unless otherwise specified on plan.
 5. Location of Tees and Laterals will be determined in the field by the owner.
 6. All stubs and laterals to be constructed in accordance with Standard Drawing No. 562. Stubs shall be plugged and capped and shall be two feet long.
 7. Precast manholes may be used after obtaining prior approval of the City Engineer.
 8. Manhole rims shall be set to finish street grades.



TECHNOLOGICAL ENGINEERING CORP.
 4921 DURFEE AVE., RICO RIVERA, CALIF.
 699-1043 723-8891
 J.A. PATTERSON R.C.E. 10410 DATE 5-29-69

DESIGNED BY	DRAWN BY M.H.	CHECKED BY
REVISIONS	APPR.	DATE

As Built 5/1/72
 CITY OF RIVERSIDE, CALIFORNIA
 DEPARTMENT OF PUBLIC WORKS
 APPROVED BY: [Signature]
 OFFICE ENGINEER: [Signature]
 PARK DEPARTMENT: [Signature]
 TRAFFIC DIVISION: [Signature]
 ASSISTANT CITY ENG.: [Signature]
 DATE 10/30/69

BENCH MARK EL. 703.93
 RIVERSIDE COUNTY B.M. NO. 7
 CHISELED 'X' ON S.E. COR. OF BOTTOM CONC.
 STEP AT MAIN ENTRANCE TO CHURCH ON N.W.
 COR. OF HOLE AVE. & JONES AVE.

SEWER IMPROVEMENTS.
 TRACT NO. 4279
 FURLONG STREET
 FROM FOOTE COURT
 TO 262.98 EASTERLY THEREOF.
 HORIZ. SCALE: 1" = 40'
 VERT. SCALE: 1" = 4'

PROJECT NO.
S-776
 SHEET 2 OF 2
 FILE NO.