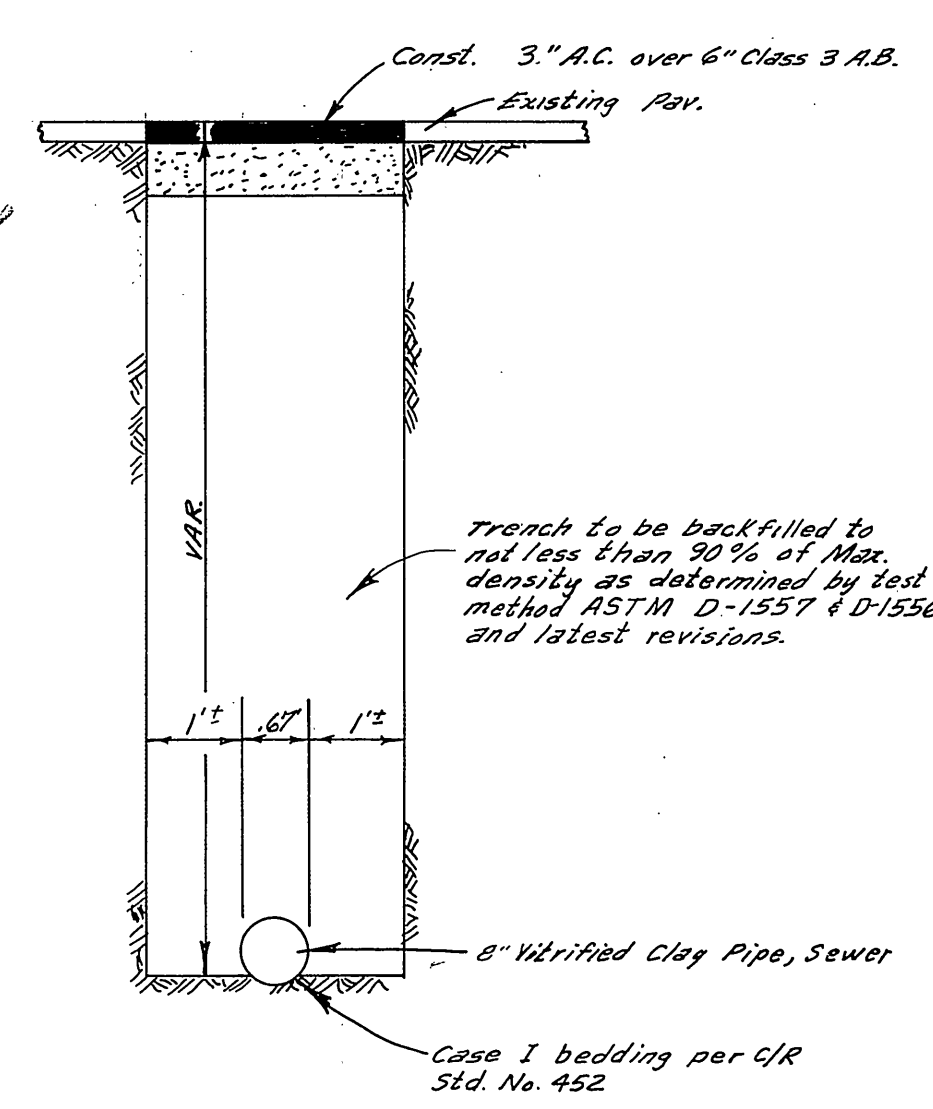
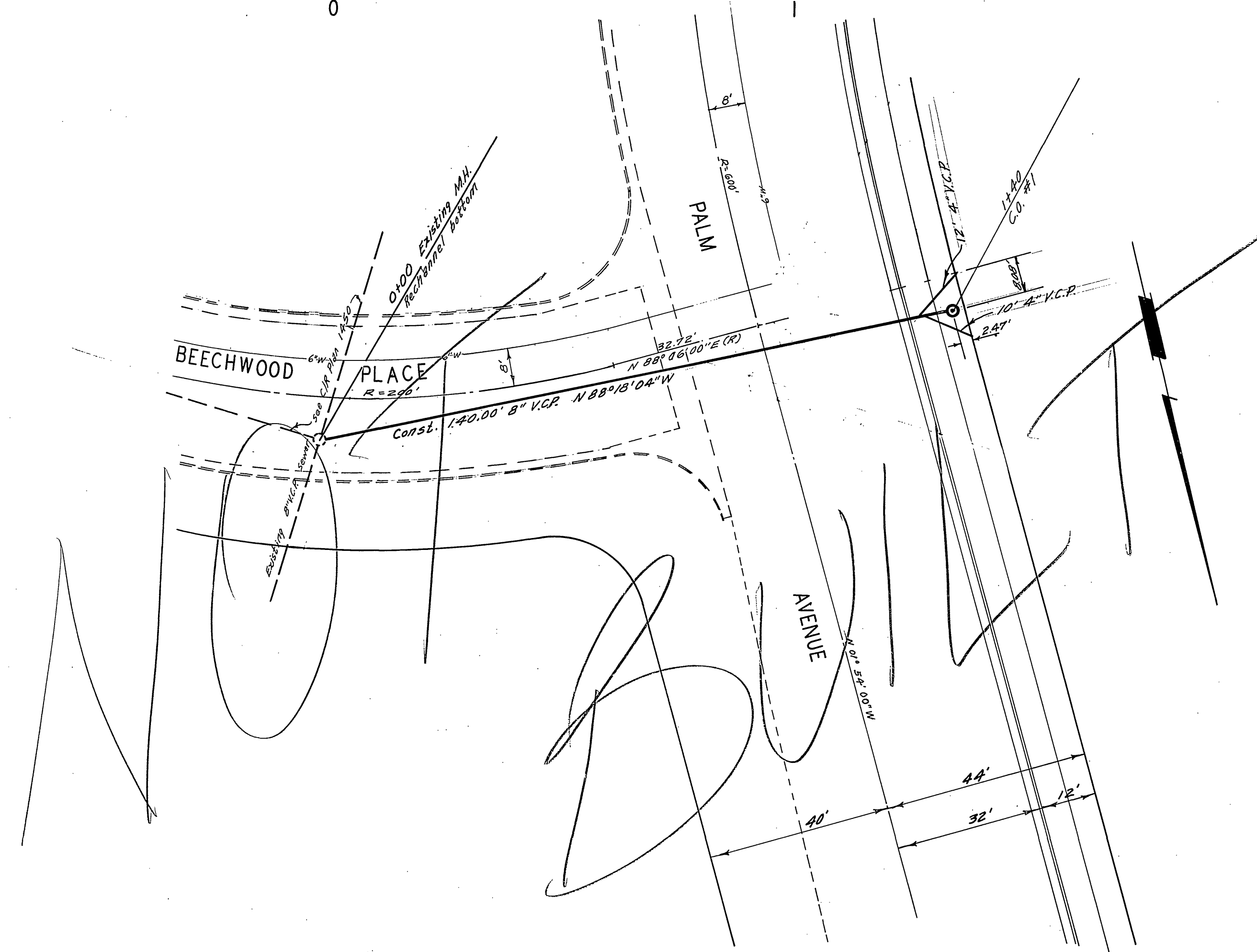


SCALE 1" = 20' Horiz.
1" = 4' Vert.

BENCH MARK: Elev 8292
PK. nail in S.E. curb return from
Beechwood C/P R.B. 575 1/2



TRENCH TYPICAL
SCALE 1" = 2'

- GENERAL NOTES
- Construction shall be in accordance with the City of Riverside, Department of Public Works, Standard Specifications No. 461 and Standard Drawings.
 - It shall be the responsibility of the contractor to clear the right of way in accordance with the provisions of the law as it affects each utility including irrigation lines and appurtenances and at no cost to the City.
 - Joints shall be in accordance to ASTM Specifications C-425-64 Type I or III or to ASTM Specifications C-594-66 (Clay Seal) with certain exceptions or modifications on file with the City Engineer.
 - Pipe shall be bedded per Case II, Standard Drawing No. 452, unless otherwise specified on plan.
 - Location of wyes and laterals to be determined at the direction of the owner.
 - All stubs and laterals to be constructed in accordance with Standard Drawing No. 562. Stubs shall be plugged and capped.
 - Manhole frames and covers to be set to existing pavement grades.
 - Laterals are to be 4" and extended to property line.

QUANTITY ESTIMATE

Cleanout Standard No. 560	1 Ea.
8" Vitrified Clay Pipe	120 L.F.
4" Vitrified Clay Pipe (Lateral)	22 L.F.
8" X 4" Wye	2 Ea.
Pavement Replacement	320 S.F.

ALBERT A. WEBB ASSOCIATES CIVIL ENGINEERS RIVERSIDE, CALIFORNIA APPROVED BY: <i>[Signature]</i> DATE: 11/10/09 R.E. No. 16056	CITY OF RIVERSIDE, CALIFORNIA PUBLIC WORKS DEPARTMENT APPROVED BY: <i>[Signature]</i> DATE: 11-12-09 CHIEF PUB. WKS. ENGR.	SEWER PLAN AND PROFILE BEECHWOOD PLACE C.U.P. C-6-678	ACCOUNT No. DRAWING NUMBER S-777 SHEET 1 OF 1
		W.O. 69-27 FOR JACK DESSEL F.B. 1012 DESIGNED BY: BEL DRAWN BY: BEL CHECKED BY: J.A.W.	SCALE: 1" = 20'