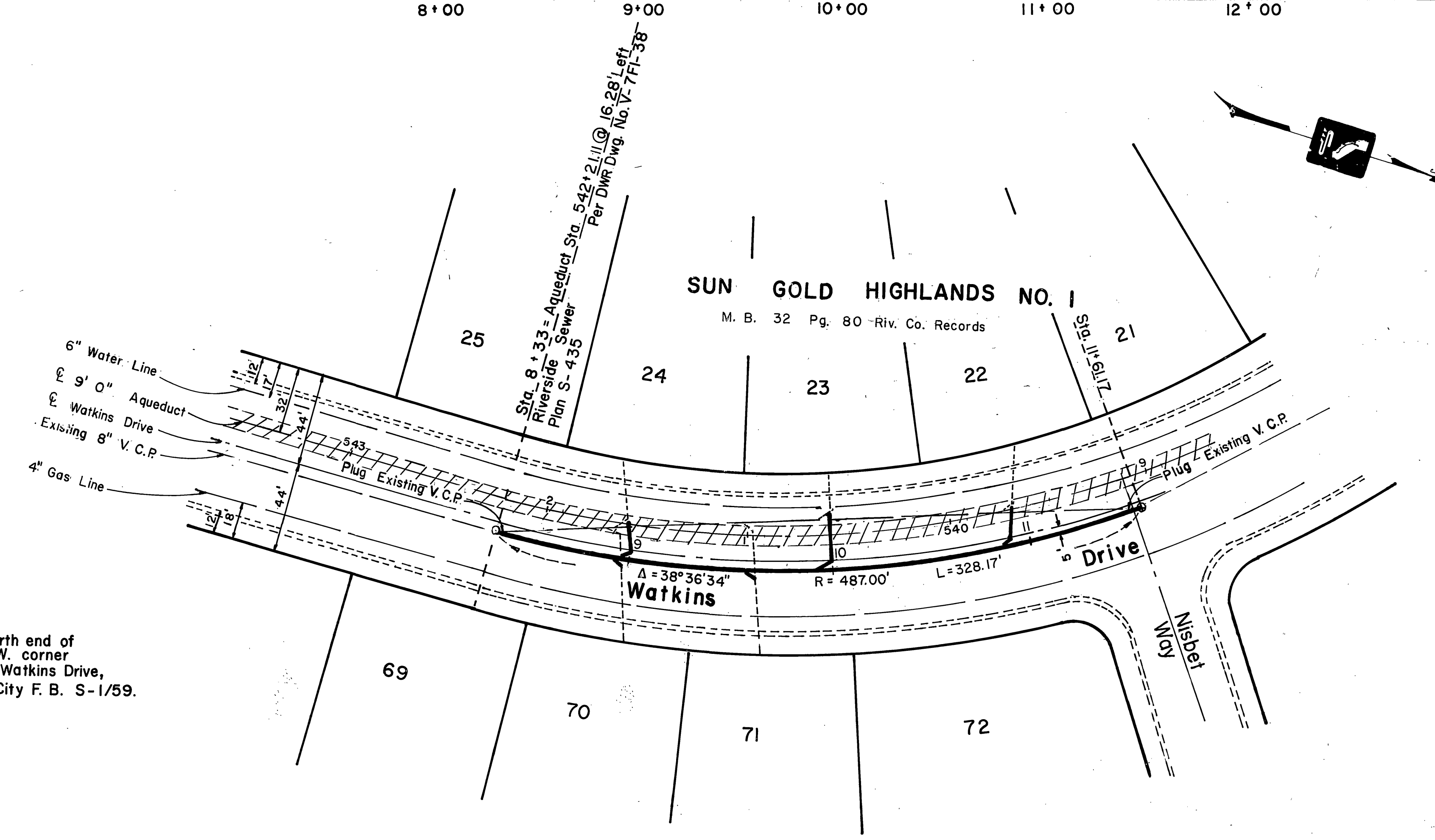


Scale:  
 VERT. 1 inch = 4 feet  
 HORIZ. 1 inch = 40 feet



**BENCH MARK**  
 Chiseled "X" on North end of curb return at N.W. corner of Frost Court and Watkins Drive, Elevation 1172.52 City F.B. S-1/59.

**GENERAL NOTES**

1. Construction shall be in accordance with the City of Riverside, Department of Public Works Specification No. 461 and Standard Drawings.
2. It shall be the responsibility of the contractor to clear the right of way in accordance with the provisions of the law as it affect each utility including irrigation lines and appurtenances and at no cost to the City.
3. Joints shall be in conformance to A. S. T. M. Specifications C-425-64 Type I or III or A. S. T. M. Specifications C-594-66T (Band Seal) with certain exceptions or modifications as file with the City Engineer.
4. Pipes shall be bedded per Case I, Standard Drawing No. 452, unless otherwise specified on plan.
5. All stubs and laterals to be constructed in accordance with Standard Drawings No 562. Stubs shall be plugged and capped.
6. Laterals are to be 4" diameter.
7. Prior to construction of sewer, Contractor is to expose existing sewer and verify existing elevations.
8. Channel Manhole bottoms to accommodate new sewer alignment.
9. Extend (or shorten) laterals to connect with new alignment.
10. Contractor is to maintain sewer service on all laterals affected.

**NOTICE TO CONTRACTOR**

The existence and location of any underground utility pipes or structures shown on these plans are obtained by a search of the available records. To the best of our knowledge, there are no existing utilities except as shown on these plans.

The Contractor is required to take due precautionary measures to protect the utility lines shown and any other lines not shown on these plans.

Existing sewer laterals that are damaged or are in conflict with the proposed construction shall be repaired or relocated immediately by the Contractor.

Damage to existing laterals which are shown on the plan shall be repaired by the Contractor at his own expense.

APPROVED BY:  R. C. E. 13787	CITY OF RIVERSIDE, CALIFORNIA PUBLIC WORKS DEPARTMENT	<b>SEWER PLAN AND PROFILE</b> SEWER RELOCATION on <b>WATKINS DRIVE</b> from NISBET WAY to 350 FEET S'LY	ACCOUNT No. <b>S-778</b> SHEET 1 OF 1
DEPARTMENT OF WATER RESOURCES	DESIGNED BY D.M. DRAWN BY L.V. CHECKED BY D.M.	APPROVED BY: BY DATE: APPROVED BY: PRINCIPAL ENGINEER: J.E. 11/28 PARK DEPARTMENT: [Signature] TRAFFIC DIVISION: [Signature] DIRECTOR OF PUBLIC WORKS CHIEF PUB. WKS. ENGR. DATE 1-27-20	SCALE: 1 INCH = 40 FEET