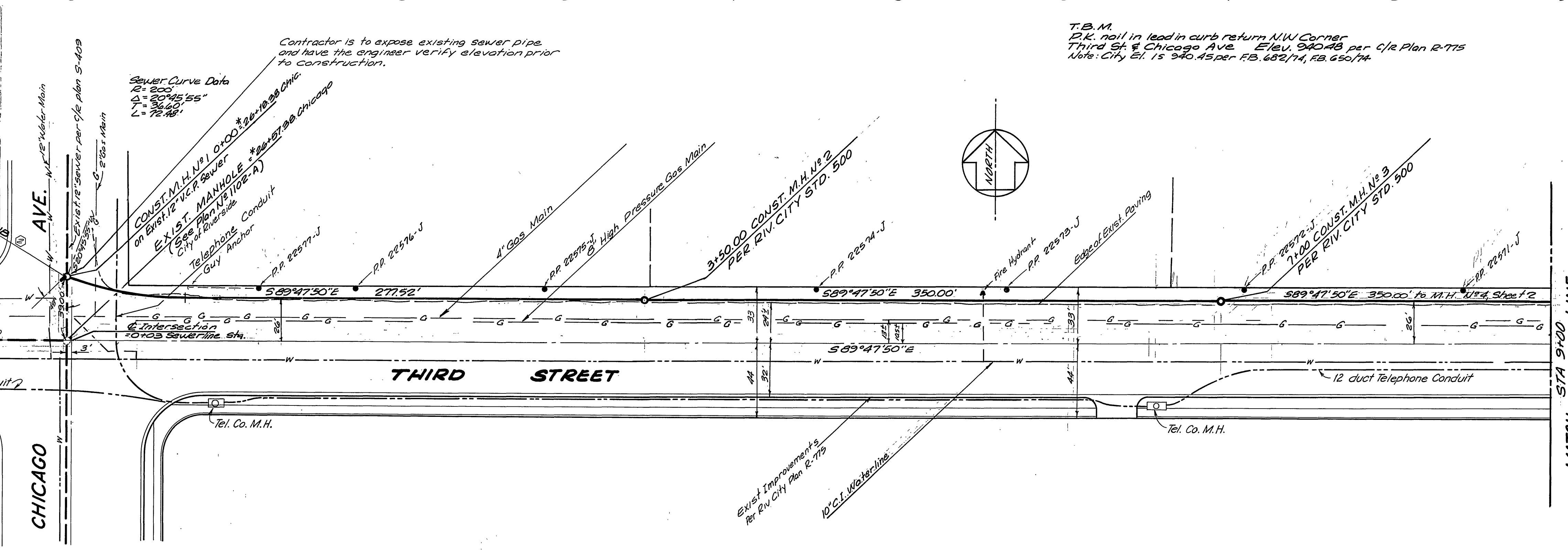


**-CAUTION-**  
**PACIFIC TELEPHONE**  
**CABLES UNDERGROUND**  
**BEFORE EXCAVATING**

CALL COLLECT:

Orange County	714-633-0811	714-547-6606
Riverside County	714-684-0071	714-547-6606
Inyo County	714-684-0071	714-547-6606
San Bernardino County	714-684-0071	714-547-6606
Los Angeles County	213-621-3111	24 HOUR SERVICE
Ventura County	213-621-3111	24 HOUR SERVICE
San Diego County	714-298-0595	714-292-0027

FOR FREE CABLE LOCATING SERVICE



- GENERAL NOTES**
- All manholes to be Riverside City Standard No. 500 modified. Maximum vertical spacing of steps in all manholes shall be 12 inches.
  - All construction shall be in accordance with the Standard Specifications for Public Works Construction 1970 Edition & Standard Drawings of the City of Riverside Department of Public Works. Pipe shall be embedded per Case 1 Standard Drawing No. 452 unless otherwise specified on Plans.
  - It shall be the responsibility of the Contractor to clear the right of way in accordance with the provisions of law as it affects each utility including irrigation lines and appurtenances and at no cost to the City of Riverside.
  - Joints shall be Type "H" or "C" as per Standard Specifications. Type "H" joints may be used with certain exceptions or modifications on file with the City Engineer.
  - Location of all tees and laterals to be located in field. Avoid conflict with proposed and/or existing facilities.
  - All stubs and laterals to be constructed in accordance with Standard Drawing No. 562.
  - Laterals shall be 4" V.C.P. and extended to property line.
  - All stubs at manholes shall be 2' long and plugged.
  - Replace all pavement removal with 4" A.C. over 8" Class 3 A.B.

APPROVED BY  
*Howard X Cream* DATE 7-7-70  
 CHIEF PUBLIC UTILITY WATER ENGINEER

**J. F. DAVIDSON ASSOCIATES**  
 CIVIL ENGINEERS - SURVEYORS - PLANNERS  
 RIVERSIDE, CALIFORNIA

APPROVED BY *Robert J. Kopp* DATE 10-22-69  
 R.E. No. 13874

W.O. 1739 FOR: William Austin F.B.

MARK	REVISIONS	APPR.	DATE
1	REVISED GENERAL NOTES 1, 2, 4, 5, 6, 7, 8, 9, 10, 11, 12, 13, 14, 15, 16, 17, 18, 19, 20, 21, 22, 23, 24, 25, 26, 27, 28, 29, 30, 31, 32, 33, 34, 35, 36, 37, 38, 39, 40, 41, 42, 43, 44, 45, 46, 47, 48, 49, 50, 51, 52, 53, 54, 55, 56, 57, 58, 59, 60, 61, 62, 63, 64, 65, 66, 67, 68, 69, 70, 71, 72, 73, 74, 75, 76, 77, 78, 79, 80, 81, 82, 83, 84, 85, 86, 87, 88, 89, 90, 91, 92, 93, 94, 95, 96, 97, 98, 99, 100		
2	ADDED 15" V.C.P. STUB		

\* AS BUILT 1/27/71 norm

**CITY OF RIVERSIDE, CALIFORNIA**  
**DEPARTMENT OF PUBLIC WORKS**

APPROVED BY *W. J. ...* BY DATE *11/15/70*  
 OFFICE ENGINEER  
 PARK DEPARTMENT  
 TRAFFIC DIVISION  
 ASSISTANT CITY ENG.

APPROVED BY *W. J. ...* BY DATE *11/15/70*  
 DIRECTOR OF PUBLIC WORKS

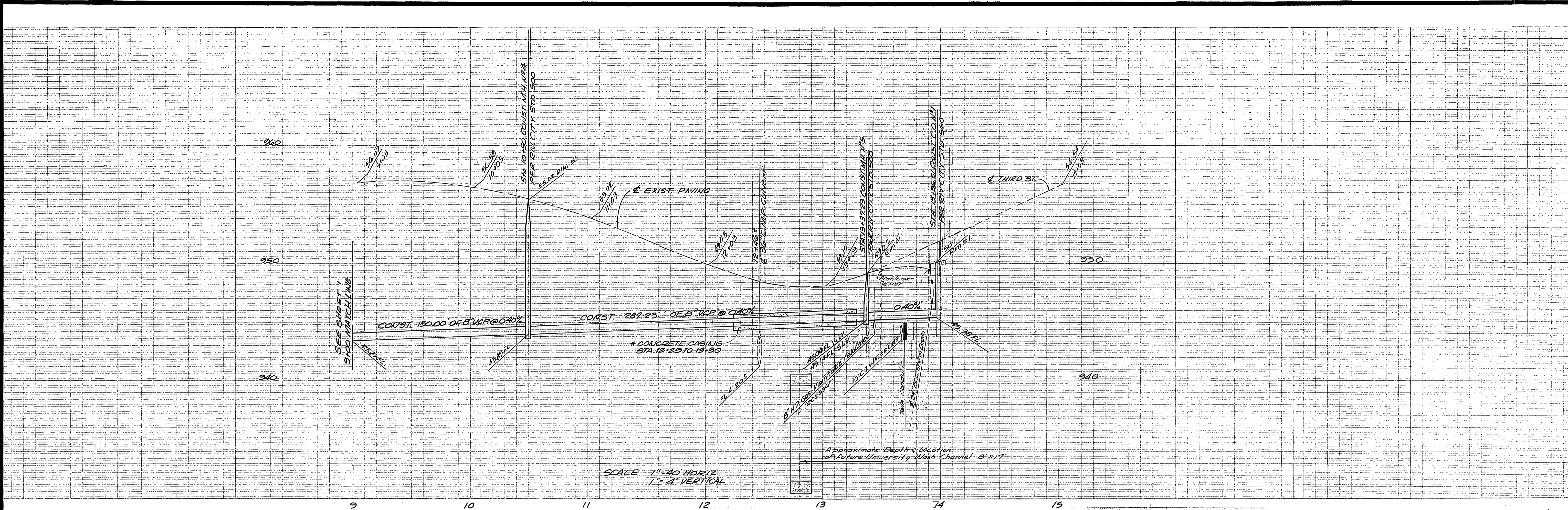
DATE 11/17/70

**SEWER PLAN & PROFILE**  
**THIRD STREET**  
 FROM CHICAGO AVE  
 TO STATE HIGHWAY ROUTE 60/395

R.S. 1031

HORIZ. SCALE: 1" = 40' VERT. SCALE: 1" = 4'

PROJECT NO. **5-782**  
 SHEET 1 OF 2  
 FILE NO. 3373



T.B.M.  
12' x 12' nail in lead in curb return N.W. Corner  
Third St & Chicago Ave. Elev. 940.48

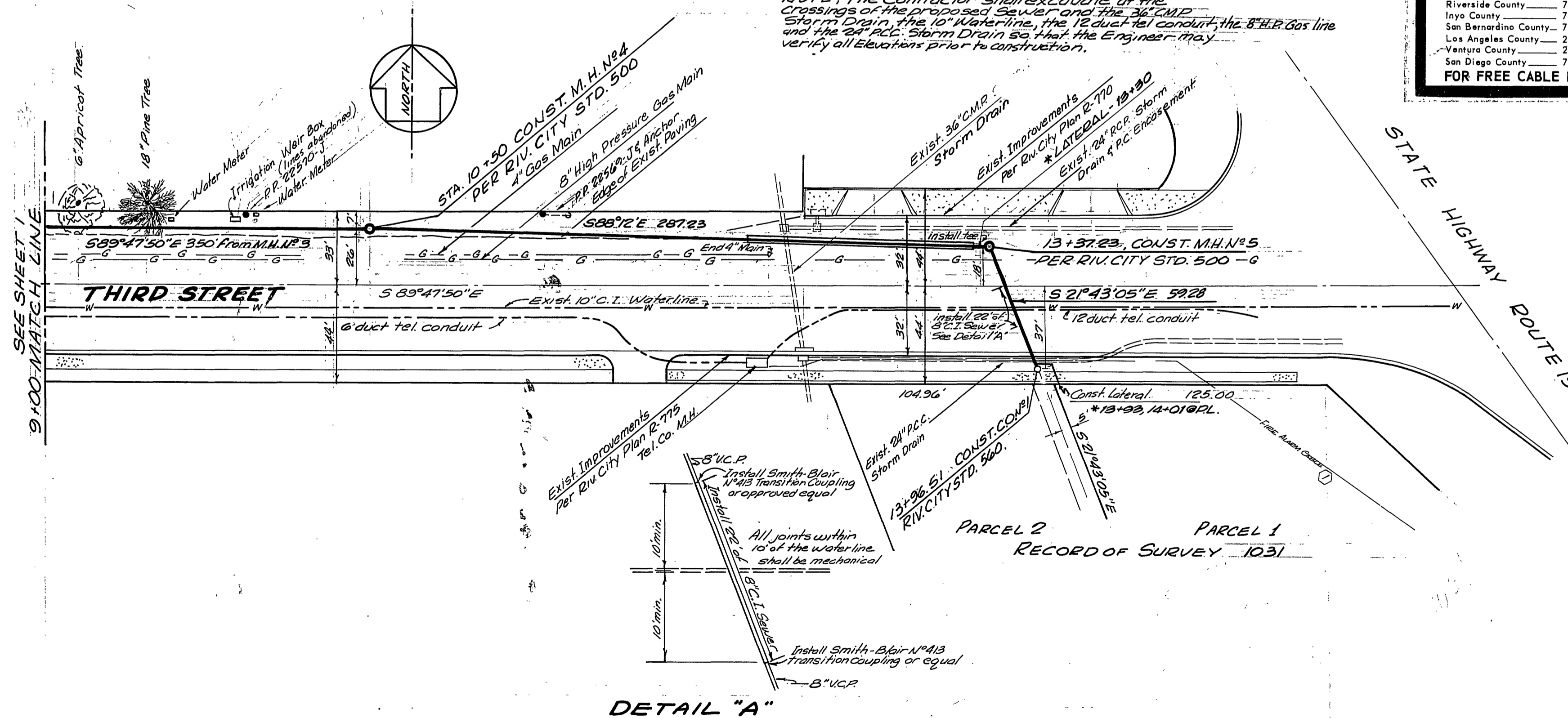
NOTE: The Contractor shall excavate at the crossings of the proposed sewer and the 36" CMIP Storm Drain, the 10" Waterline, the 18" duct tel. conduit, the 8" B.R.P. Gas line and the 30" RCP Storm Drain so that the Engineer may verify all elevations prior to construction.

**- CAUTION -  
PACIFIC TELEPHONE  
CABLES UNDERGROUND  
BEFORE EXCAVATING**

CALL COLLECT:

	7:30 A.M. to 5 P.M. & Holidays
Orange County	714-633-0811 / 714-547-6606
Riverside County	714-684-0071 / 714-547-6606
Inyo County	714-684-0071 / 714-547-6606
San Bernardino County	714-684-0071 / 714-547-6606
Los Angeles County	213-621-3111 / 24 HOUR SERVICE
Ventura County	213-621-3111 / 24 HOUR SERVICE
San Diego County	714-298-0876 / 714-232-0027

FOR FREE CABLE LOCATING SERVICE



DETAIL "A"

AS BUILT 11/27/71 norm

J. F. DAVIDSON ASSOCIATES  
CIVIL ENGINEERS - SURVEYORS - PLANNERS  
RIVERSIDE, CALIFORNIA  
APPROVED BY: *[Signature]* DATE: 11-22-71  
R.E. No. 12667

MARK	REVISIONS	APPR.	DATE
①	ADDED FIRE ALARM CABLE PER [Signature]	Cudo	10/21/70

CITY OF RIVERSIDE, CALIFORNIA  
DEPARTMENT OF PUBLIC WORKS

APPROVED BY:	BY DATE:	APPROVED BY:
OFFICE ENGINEER	<i>[Signature]</i> 1/5	<i>[Signature]</i>
PARK DEPARTMENT		DIRECTOR OF PUBLIC WORKS
TRAFFIC DIVISION		
ASSISTANT CITY ENG.		

DESIGNED BY: W.H.A. - DRAWN BY: W.H.A. - CHECKED BY: W.H.A.

SEWER PLAN & PROFILE  
**THIRD STREET**  
FROM CHICAGO AVE  
TO STATE HIGHWAY ROUTE 60/395  
R.S. 1031

PROJECT NO.  
**5-782**

SHEET 2 OF 2

FILE NO. 3373

HORIZ. SCALE: 1" = 40' VERT. SCALE: 1" = 4'