

BENCH MARK:
 RE. 1011 IN CURB
 5.12 CORNER CORNER AVE & S. 1/2
 ST. - ELEV. 962.99, C/P. 112. 685/79.

- GENERAL NOTES**
- Construction shall be in accordance with the City of Riverside, Department of Public Works, Standard Specifications No. 461 and Standard Drawings.
 - It shall be the responsibility of the contractor to clear the right of way in accordance with the provisions of the law as it affects each utility including irrigation lines and appurtenances and at no cost to the City.
 - Joints shall be in conformance to A.S.T.M. Specifications C-425-64 Type I or III or to C-594-66T (Band Seal) with certain exceptions or modifications on file with the City Engineer.
 - Pipe shall be bedded per Case 1, Standard Drawing No. 452, unless otherwise specified on plan.
 - Location of wyes and laterals to be determined at the direction of the owner.
 - All stubs and laterals to be constructed in accordance with Standard Drawing No. 562. Stubs shall be plugged and capped.
 - Manhole frames and covers to be set to proposed pavement grades.
 - Laterals are to be 4" and extended to property line.
 - Prior to construction of sewer, Contractor is to expose existing sewer and contact Engineer for verification of existing elevations.
 - Mission band seal pipe not allowed for curved sewers.

QUANTITY ESTIMATE

MANHOLE - STD. No. 500	6 EA.
CLEANOUT - STD. No. 560	3 EA.
8" VITRIFIED CLAY PIPE	1,719 L.F.
4" VITRIFIED CLAY PIPE	1,409 L.F.
WYES	35 EA.
SADDLES	8 EA.

NOTICE TO CONTRACTOR

The existence and location of any underground utility pipes or structures shown on these plans are obtained by a search of the available records. To the best of our knowledge, there are no existing utilities except as shown on these plans.

The Contractor is required to take due precautionary measures to protect the utility lines shown and any other lines not of record or not shown on these plans.

See Detail "A"
 Sheet 4 of 4 of Street
 Plans

19

TRACT NO. 2062

ALBERT A. WEBB ASSOCIATES
 CIVIL ENGINEERS
 RIVERSIDE, CALIFORNIA

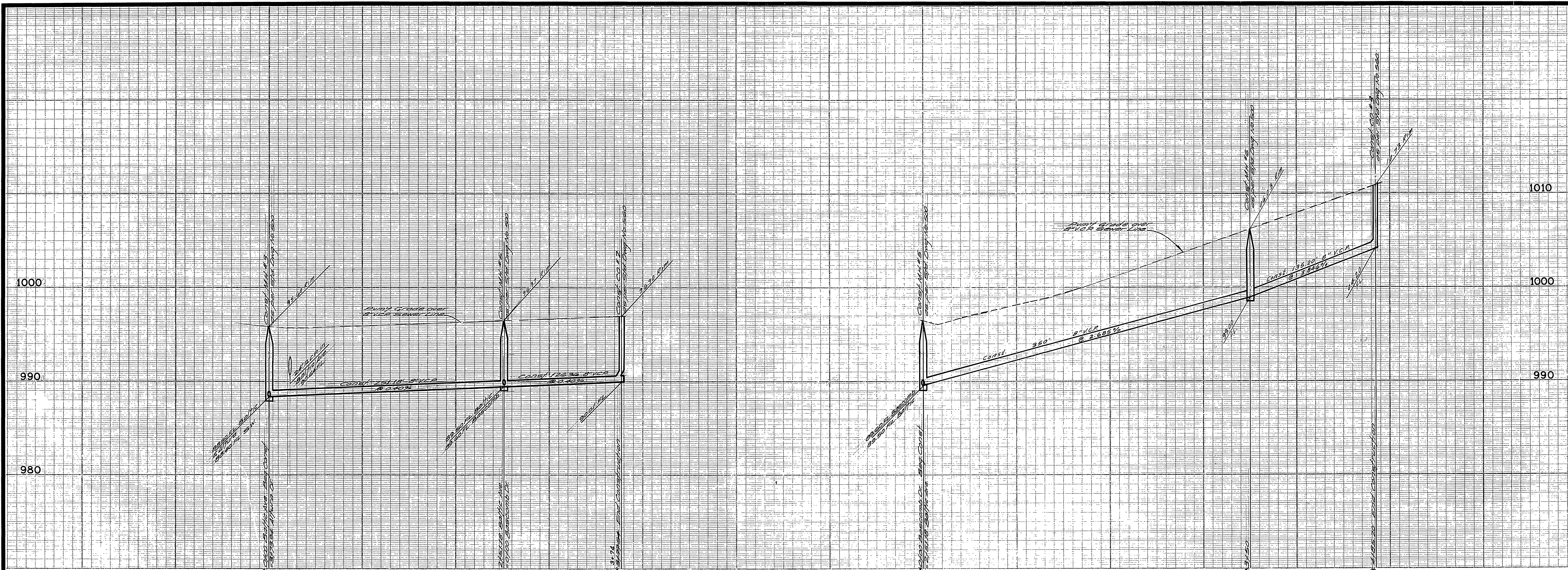
APPROVED BY: *Emmet N. Webb* DATE: 11/18/69
 R.E. No. 9876

CITY OF RIVERSIDE, CALIFORNIA
 PUBLIC WORKS DEPARTMENT

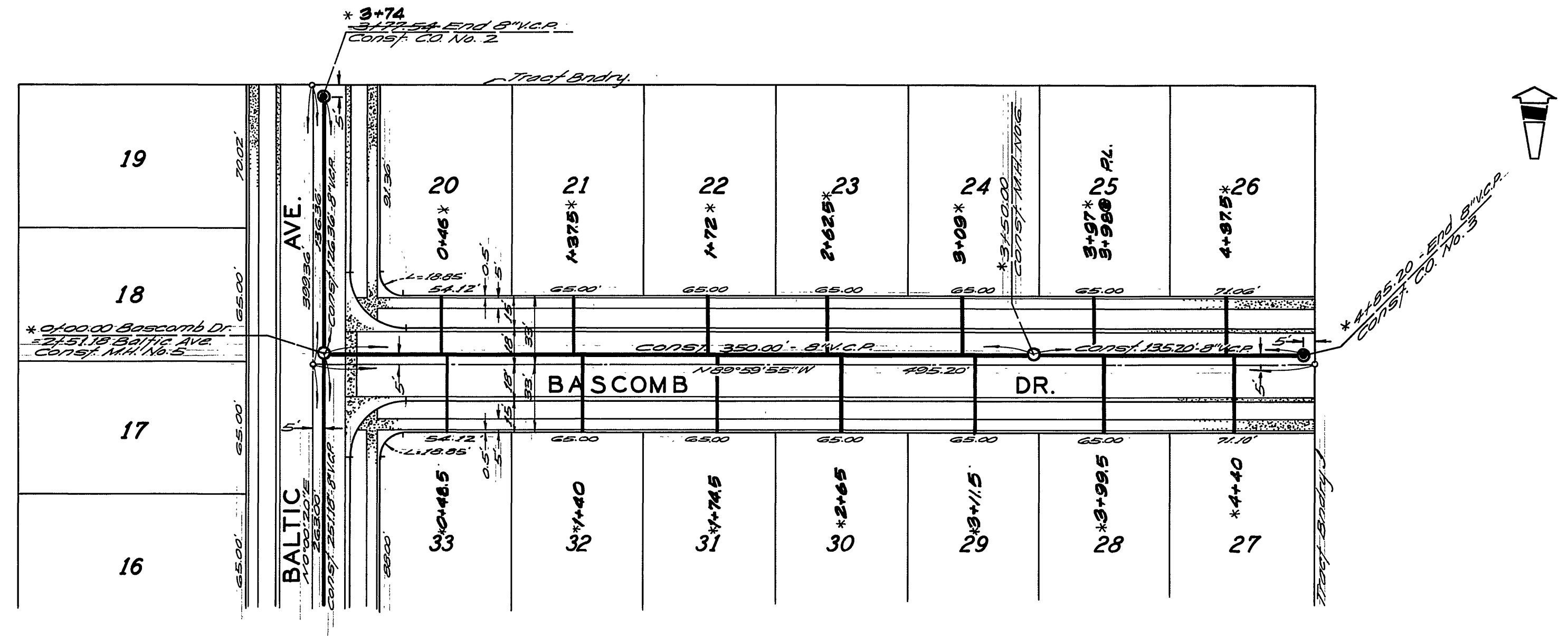
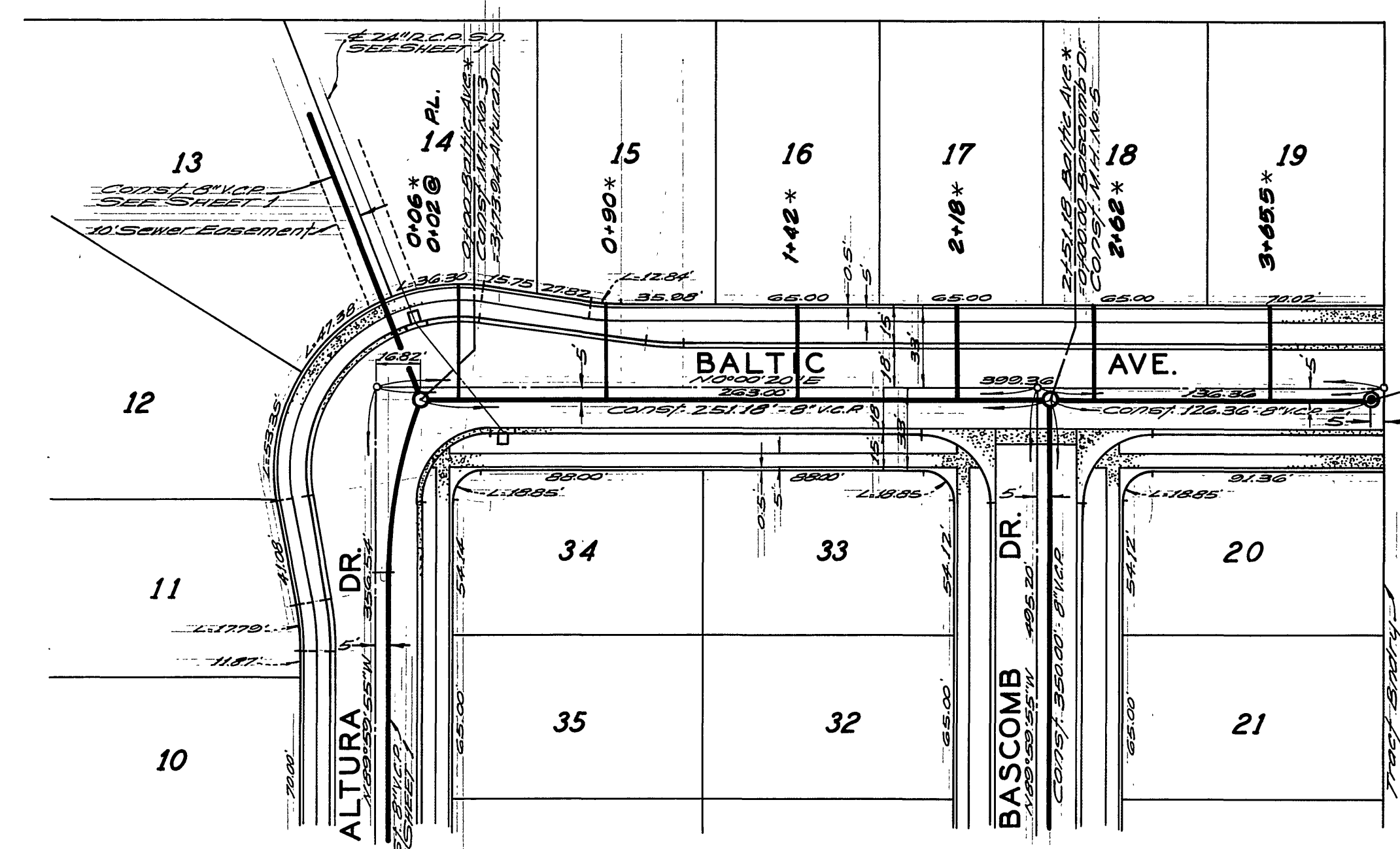
APPROVED BY: *[Signature]* DATE: 6-19-70
 PRINCIPAL ENGINEER
 PARK DEPARTMENT
 TRAFFIC DIVISION
 CHIEF PUB. WKS. ENGR.

SEWER PLAN AND PROFILE
 EASEMENT N'LY FROM MASS. AVE.
 ALTA DR. & NEWKIRK DR.
 TRACT NO. 4016

ACCOUNT No.
 DRAWING NUMBER
5-785
 SHEET 1 OF 2
 69-122 B



BENCH MARK:
24" nail in culvert headwall
540' CENTER LONG AVE. @ STATION
ST. ELEV. 982.00, C/P. FB. 882.18



* AS BUILT 10/19/70 norm ✓ 10/30/70 KARL

ALBERT A. WEBB ASSOCIATES CIVIL ENGINEERS RIVERSIDE, CALIFORNIA APPROVED BY: <i>Albert A. Webb</i> DATE: 12/18/69 R.E. No. 9876	CITY OF RIVERSIDE, CALIFORNIA PUBLIC WORKS DEPARTMENT APPROVED BY: <i>[Signature]</i> DATE: 6-18-70 PRINCIPAL ENGINEER PARK DEPARTMENT TRAFFIC DIVISION CHIEF PUB. WKS. ENGR.	SEWER PLAN AND PROFILE ACCOUNT No. DRAWING NUMBER	5-785 SHEET 2 OF 2
		BALTIC AVE. - BASCOMB DR. TRACT NO. 4016 SCALE: HORIZ. 1" = 50' VERT. 1" = 5'	69-122 B