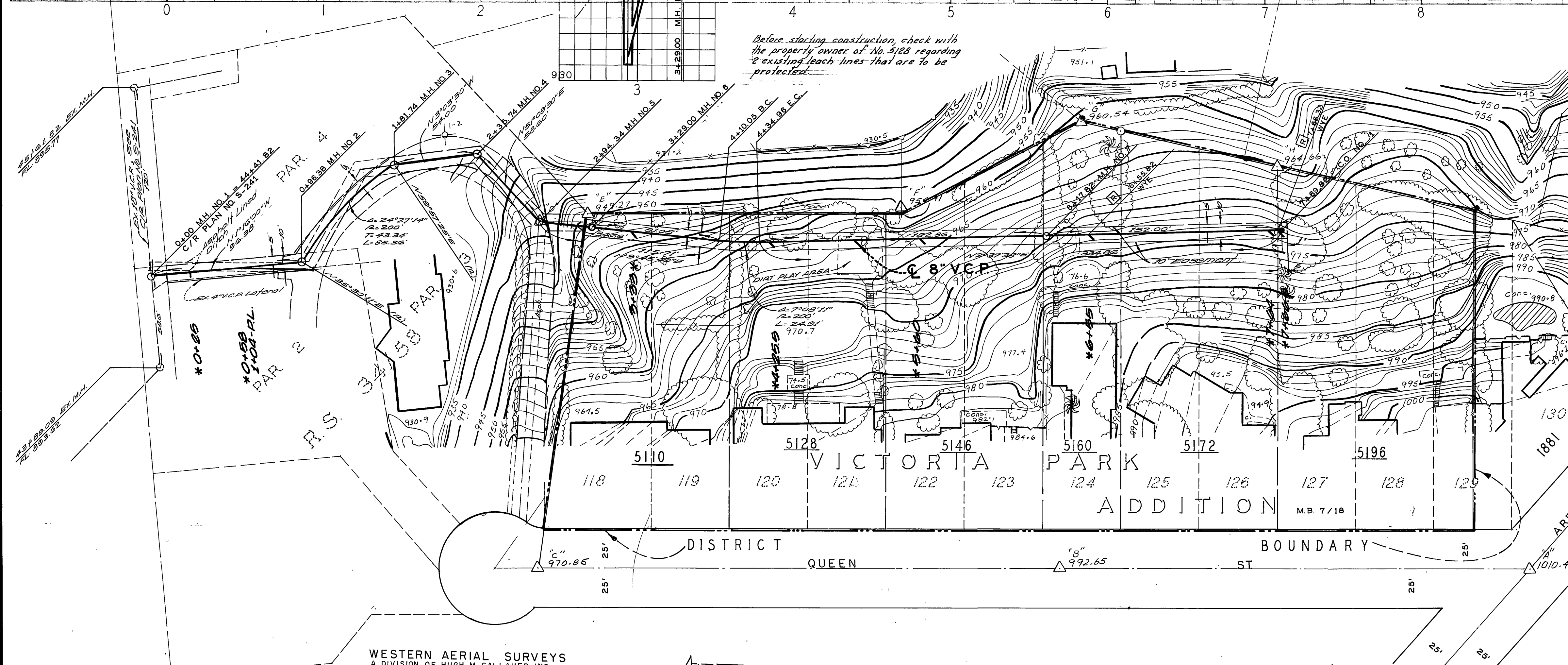


Station	Distance off sewer	Description
3430.0	1.0'	Left 6" Palm tree to be removed and relocated
3434.5	5.0'	Left 6" Palm tree
3435.5	3.0'	Right Begin grape vines northerly
3445.0	4.0'	Left 4" fruit tree
3454.0	3.7'	Right 1" orange tree to be removed and replaced
3455.0	7.2'	Left 1" fruit tree
3478.0	0.5'	Right 1" fruit tree (Avocado) remove and replace
3476.5	7.0'	Right 1" citrus tree
3487.5	11.5'	Right 1" fruit tree
4419.0	0.0'	Right Begin hedge
4419.0	0.0'	Right 3" wire fence lane
4419.0	0.0'	Right 3" wire fence heads northerly
4422.0	0.0'	Right Rain bird
4422.0	9.0'	Left 6" fruit tree
4432.0	1.3'	Right 30" Palm Tree
4435.0	1.0'	Left 3" wire fence
4443.5	3.0'	Right 3" Cypress tree
4446.0	8.5'	Left 12" Olive Tree
4456.0	3.0'	Right Begin Rose bushes northerly
4455.0	11.0'	Right Feather Mail Post
4458.0	on line	4" trees (Sycamores)
4469.0	10.5'	Left 14" Pine Tree
4468.0	4.5'	Left Rain bird
4477.0	4.3'	Left 4" Eucalyptus Tree
4485.0	3.0'	Left Rain bird
4485.0	10.0'	Left Rain bird
4487.0	12.0'	Left 14" Pepper tree
4490.0	3.5'	Right Northeast corner 4'x8' sand box - 2'x4' header & leaf
4495.0	2.5'	Left 2" Eucalyptus tree
4502.0	on line	5' bush
4508.0	1.5'	Right 5' bush
4512.0	3.0'	Right 5' bush heads northerly
4505.0	6.3'	Left Rain bird
4505.0	9.5'	Left 6" Pepper Tree
4516.0	0.5'	Right End 3" wire fence heads northerly
4518.0	4.0'	Right 20" Eucalyptus tree remove lower dry branch
4526.0	on line	Begin 25'x25' trash pile
4587.0	7.0'	Left Citrus tree 2"
4614.5	3.5'	Left 4" trees trim major portion W. side
620.0	on line	10' Oleander bush - remove
619.0	8.0'	Left 2" fruit tree
620.0	11.0'	Right 2" fruit tree
637.0	-	Concrete block steps at approximately 90°
644.0	10.0'	Left Rain bird
6442.0	on line	Rose Rose bushes - remove and replace
6462.0	6.0'	Left 2" tree
7472.0	5.0'	Left 5" Eucalyptus tree
7472.0	on line	20" cactus
7474.5	3.5'	Right 24" Eucalyptus Tree
7472.0	10.0'	Right 20" cactus



BENCH MARK: Spike in RR #1528 J on westerly side Queen St. to 1' angle of 2' Arroyo Drive, Elev. 1005.98 C.R. 12 524/12

10. Indicates that property owner has requested location of "wyo"

QUANTITY ESTIMATE

Manhole Std. Dwg. No. 500 modified	7 EA
Cleanout Std. Dwg. No. 560	1 EA
8" vitrified clay pipe	769.82 LF
4" x 8" wyo	6 EA
Pavement Replacement	750 S.F.
Case II concrete Encasement	40 LF

-CAUTION-
PACIFIC TELEPHONE
CABLES UNDERGROUND
BEFORE EXCAVATING
CALL COLLECT

After Hours
7:30 A.M. to 5 P.M.
& Holidays

Orange County	714-633-0811	714-547-6606
Riverside County	714-684-0071	714-547-6606
Inyo County	714-684-0071	714-547-6606
San Bernardino County	714-684-0071	714-547-6606
Los Angeles County	213-621-3111	714-547-6606
Venture County	213-621-3111	24 HOUR SERVICE
San Diego County	714-298-0595	714-232-0027

FOR FREE CABLE LOCATING SERVICE

ALBERT A. WEBB ASSOCIATES CIVIL ENGINEERS RIVERSIDE, CALIFORNIA APPROVED BY <i>Ronald Webb</i> DATE 1-13-70 R.E. No. 9878 W.O. 89-267 FOR CITY OF RIVERSIDE FB. 1013/1.F.B. 914/18	CHANGED TO CASH CONTRACT 12/11/70 12-28-70	CITY OF RIVERSIDE, CALIFORNIA PUBLIC WORKS DEPARTMENT	SEWER PLAN AND PROFILE QUEEN STREET SEWER IN EASEMENT EASTERLY OF QUEEN ST.	ACCOUNT NO. DRAWING NUMBER 5-786 SHEET 1 OF 1 69-267 B
		APPROVED BY <i>William B. Anderson</i> PRINCIPAL ENGINEER PUBLIC DEPARTMENT TRAFFIC DIVISION CHIEF PUB. WKS. ENGR.	APPROVED BY <i>William B. Anderson</i> DIRECTOR OF PUBLIC WORKS. DATE 3/19/70	SCALE: HORIZ. 1" = 40' VERT. 1" = 4'