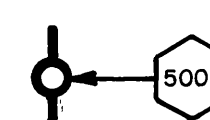
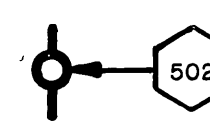
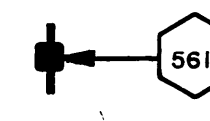
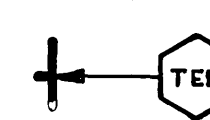


CONSTRUCTION LEGEND

- 
500A CONSTRUCT 5' MANHOLE PER C/R STD. DWG. NO. 500 (MODIFIED) WITH ECCENTRIC CONE AND 30" GRADE RINGS (6" TO 18" HIGH) - SEE NOTE 3 (GRAVITY SEWER) BELOW. FRAME AND COVER TO BE RIVERSIDE FOUNDRY NO. R-1252 (30") OR APPROVED EQUAL.
- 
502 CONSTRUCT DROP MANHOLE PER DETAIL No 2, SHEET No 2. OF 9. FOR DETAILS NOT SHOWN SEE 500A (ABOVE).
- 
561 CHIMNEY 6" CAST IRON PIPE WITH DOUBLE TEE. SEE SPECIAL PROVISIONS.
- 
TEE PLACE 4" V.C.P. SADDLE ON GRAVITY SEWER AT THE STATIONS NOTED ON THE PLANS. SEE DETAIL ON SHEET NO. 6. OF 9.

RIVERSIDE CALIFORNIA



PUBLIC WORKS DEPARTMENT MEGGINSON TRUNK SEWER

LENGTH OF PROJECT = 7569 Feet = 1.43 Miles

SHEET INDEX

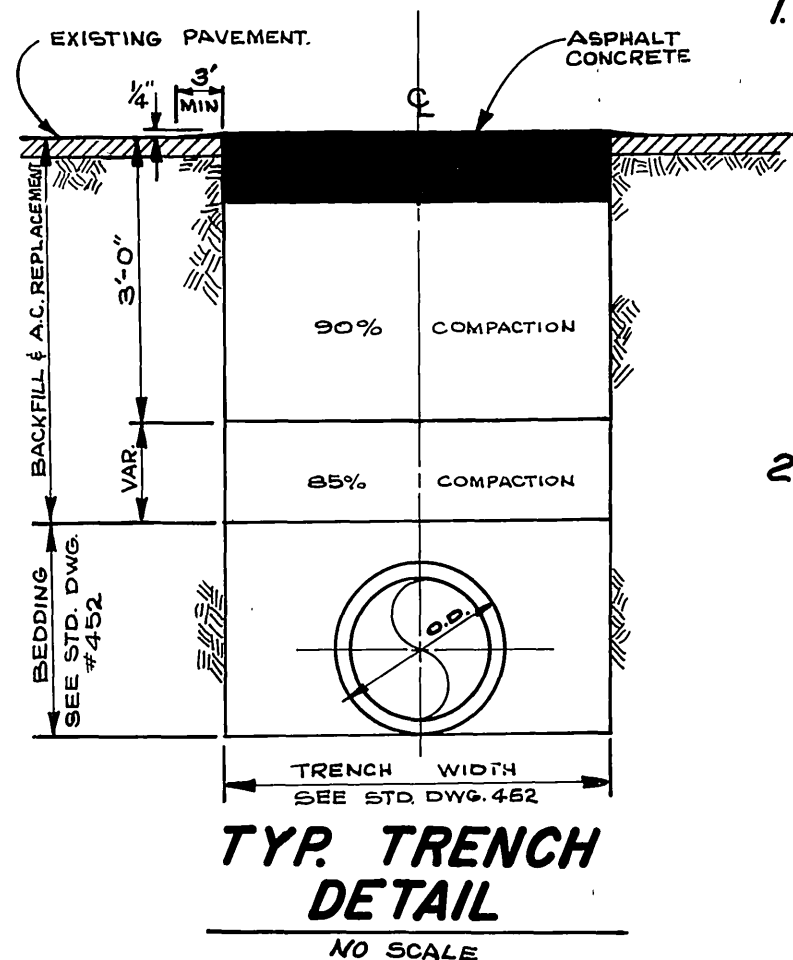
SHEET 1	TITLE SHEET.	
" 2	DETAIL SHEET.	
" 3	CHALLENGE AVE.	} GRAVITY SEWER
" 4	LION HEAD AVE.	
" 5	BOLTON AVE.	
" 6	SELMA AVE.	
" 7	COUNTY FARM.	
" 8	COUNTY FARM.	} FORCE MAIN
" 9	HOLE AVE., KIDD ST.	

NOTES:

- PAVEMENT REPLACEMENT SCHEDULE (NO BASE).

VAN BUREN BLVD.	7"
CHALLENGE STREET	4"
LION HEAD AVE.	* 2" (ROAD REBUILT)
BOLTON AVE.	4"
SELMA AVE.	4"
TYLER AVE.	3" (REQUIRED) * 9.5"
HOLE AVE.	3" (REQUIRED) * 9.5"

- * ROCK SHOWN ON PROFILE IS ONLY THAT ROCK WHICH COULD NOT BE REMOVED WITH A POWERFUL BACKHOE.



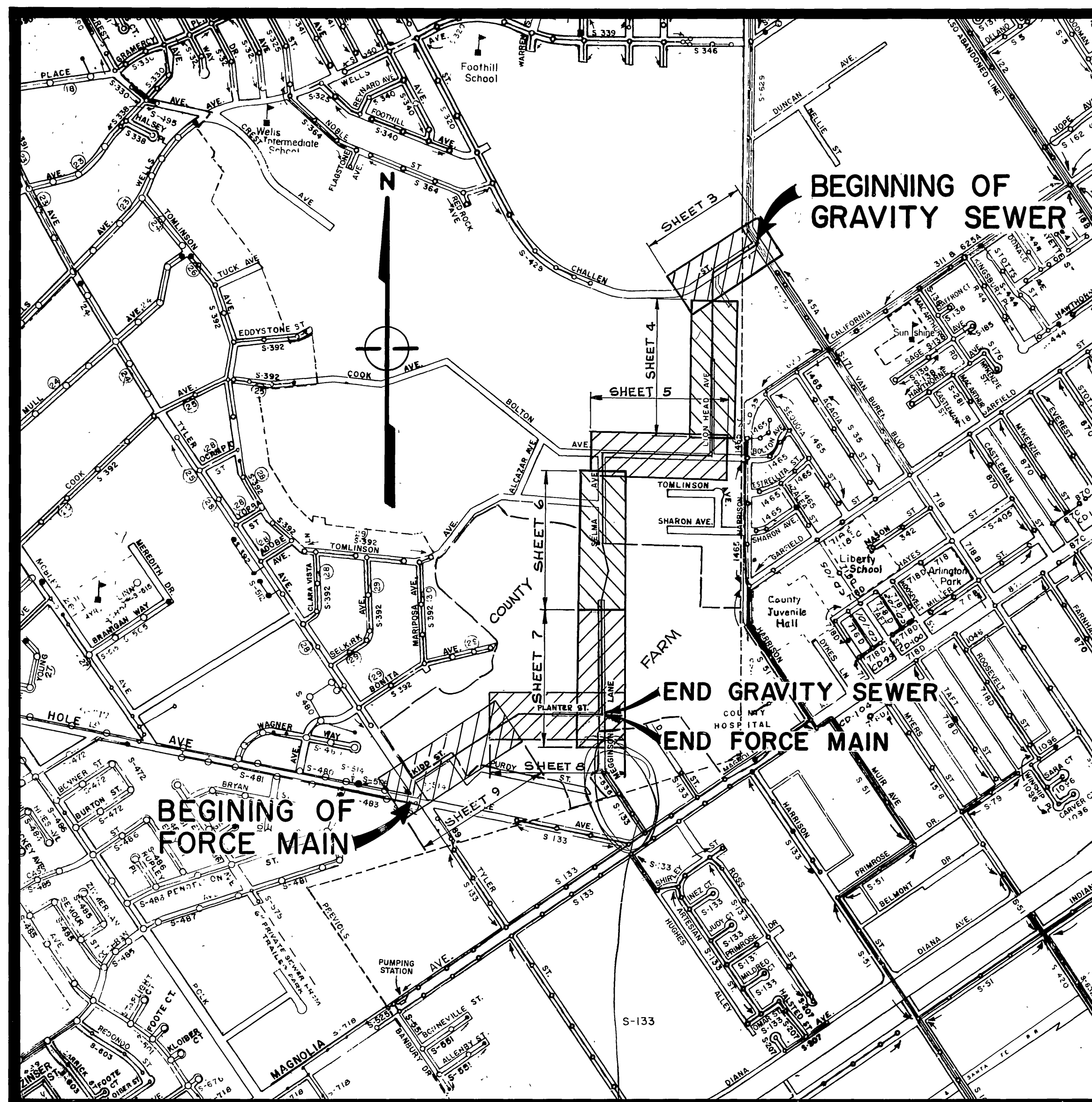
GENERAL CONSTRUCTION NOTES

GRAVITY SEWER

- PIPE SHALL BE 33" VCP INSTALLED PER C/R STD. 452, CASE I BEDDING, EXCEPT AS NOTED BELOW.
- CASE II BEDDING SHALL BE USED IN LIEU OF CASE I BEDDING AT THE DIRECTION OF THE ENGINEER WHERE ROCK OR UNSTABLE MATERIAL IS ENCOUNTERED IN THE EXCAVATION.
- ALL MANHOLE SHAFTS SHALL BE PRECAST CONCRETE (NOT BRICK) AS MANUFACTURED BY INLAND CONCRETE ENTERPRISES (714-682-2833) OR APPROVED EQUAL.
- LOCATION OF SOIL TEST BORINGS ARE SHOWN THUS ⊗ BORINGS WERE TAKEN JUNE 2, 1970. SEISMIC REPORT IS ALSO AVAILABLE FOR INSPECTION.

FORCE MAIN

- PIPE MATERIAL SHALL BE ANY ONE OF THE FOLLOWING:
 - DUCTILE CAST IRON. (20")
 - STEEL MORTAR-LINED AND COATED. (20")
 - CONCRETE PRESSURE PIPE. (21" IN LIEU OF 20")
 - ASBESTOS-CEMENT PIPE. (21" IN LIEU OF 20")
- THE INSTALLED PIPE SHALL BE ABLE TO WITHSTAND 100 PSI MIN. INTERNAL PRESSURE.
- FORCE MAIN BEDDING SHALL BE INSTALLED PER C/R STD. 452, CASE I BEDDING, UNLESS OTHERWISE SPECIFIED BY THE MANUFACTURER.
- TEST BORINGS AND SEISMIC SURVEY HAVE NOT BEEN TAKEN ALONG FORCE MAIN ROUTE.



EXISTING CULTURE & UNDERGROUND LEGEND

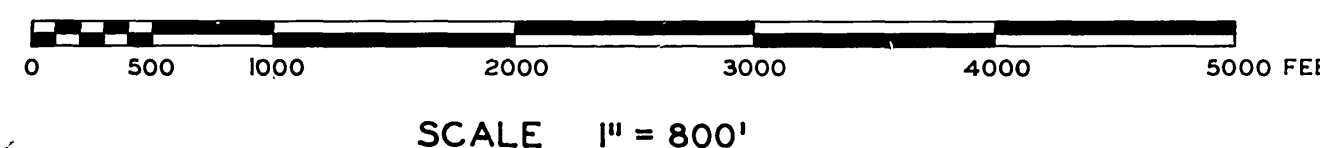
EXISTING UNDERGROUND UTILITIES			
SANITARY SEWER	8" VCP - S	TELEPHONE CONDUIT	T - T
WATER LINE	6" CI - W	ELECTRICAL CONDUIT	E - E
STORM DRAIN	24" RCP - SD	STREET LIGHTING	SL - SL
CULVERT	18" CONC - C	TRAFFIC SIGNAL	SIG - SIG
IRRIGATION LINE	20" IRR - IRR	FIRE ALARM	F - F
GAS LINE	3" M - G	ABANDONED UTILITY	- - - - -

EXISTING TOPOGRAPHY

CENTER LINE	— C —	PROPOSED TOP OF SLOPE	—▲—
RIGHT-OF-WAY LINE	— R/W —	PROPOSED TOE OF SLOPE	—▼—
SUBDIVISION LOT LINE	— P —	PROPOSED DIRECTION OF FLOW	—▶—
A.C. PAVING LIMITS	— PAV —		

⊙ SANITARY SEWER MH	○ POWER POLE
⊙ SANITARY SEWER CLEANOUT	○ GUY POLE
⊙ STORM DRAIN MH	○ POLE & GUY ANCHOR
⊙ IRRIGATION WEIR	⊙ PULL BOX
⊙ WATER MH	⊙ TRAFFIC SIGN
⊙ GAS MH	⊙ PARKING METER
⊙ ELECTRIC MH	⊙ FIRE ALARM BOX
⊙ TELEPHONE MH OR VAULT	

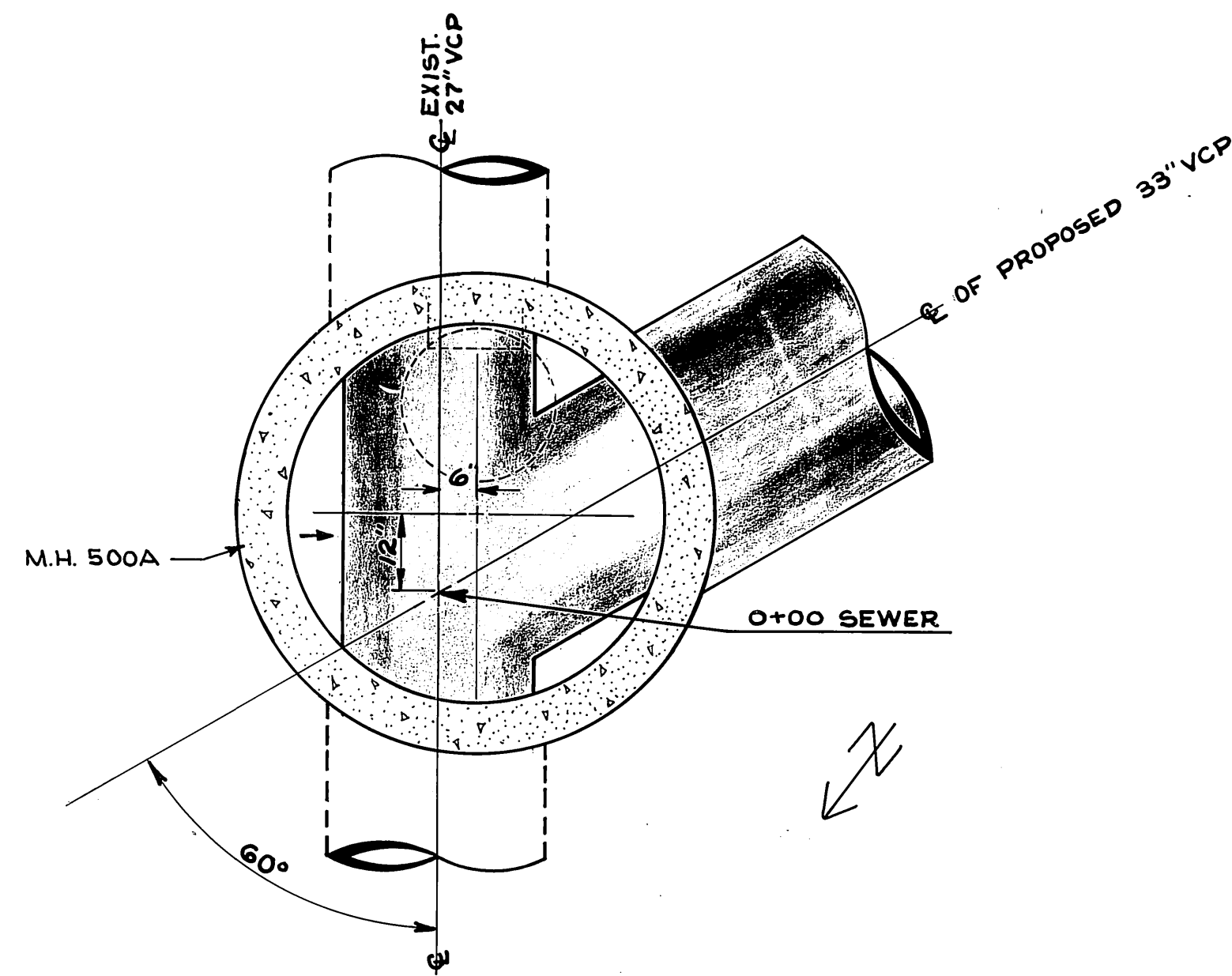
PROJECT LOCATION PLAN



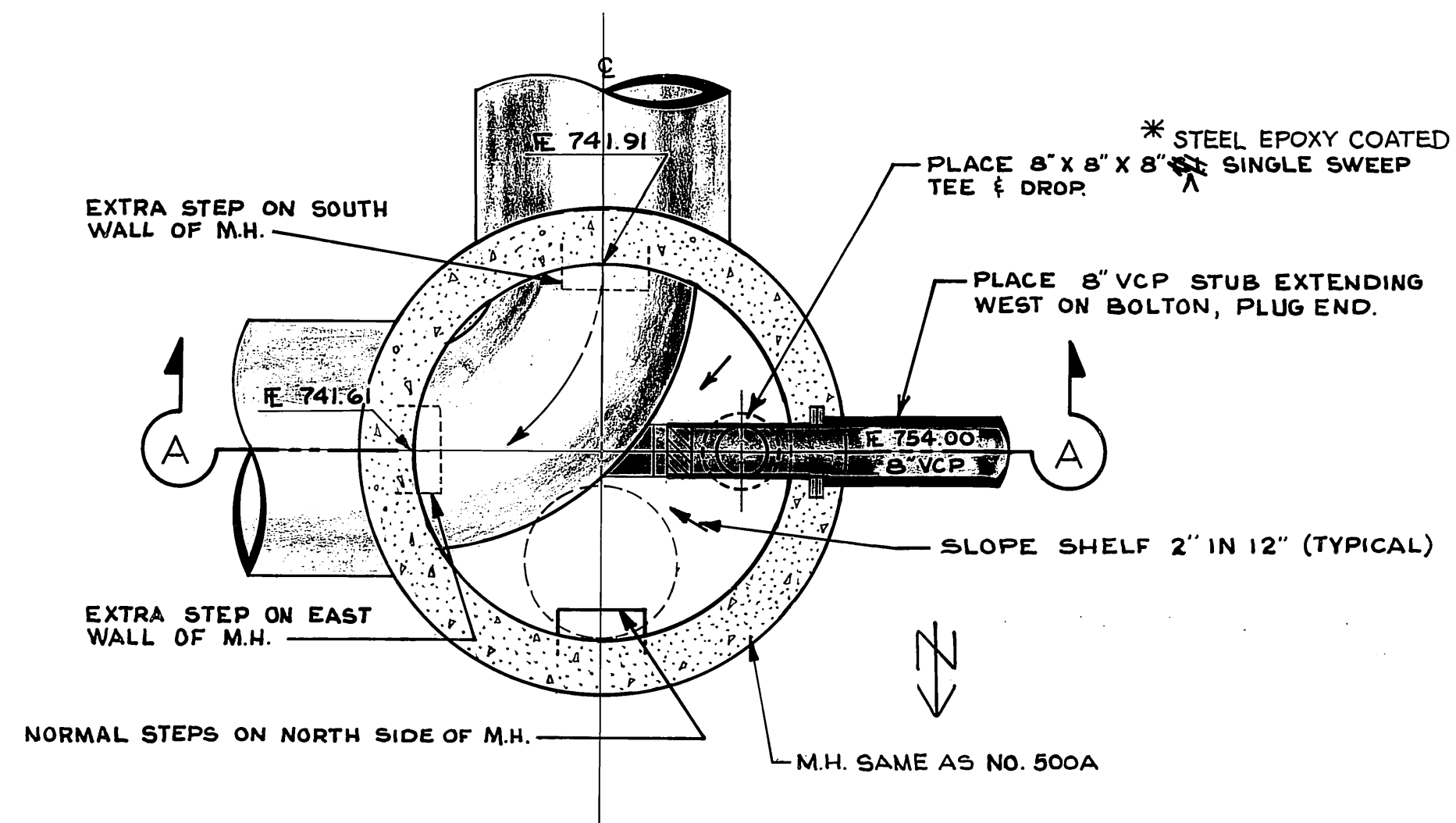
Drawing not used (included here) DCH

*AS BUILT 4/1/71 J.P.G.

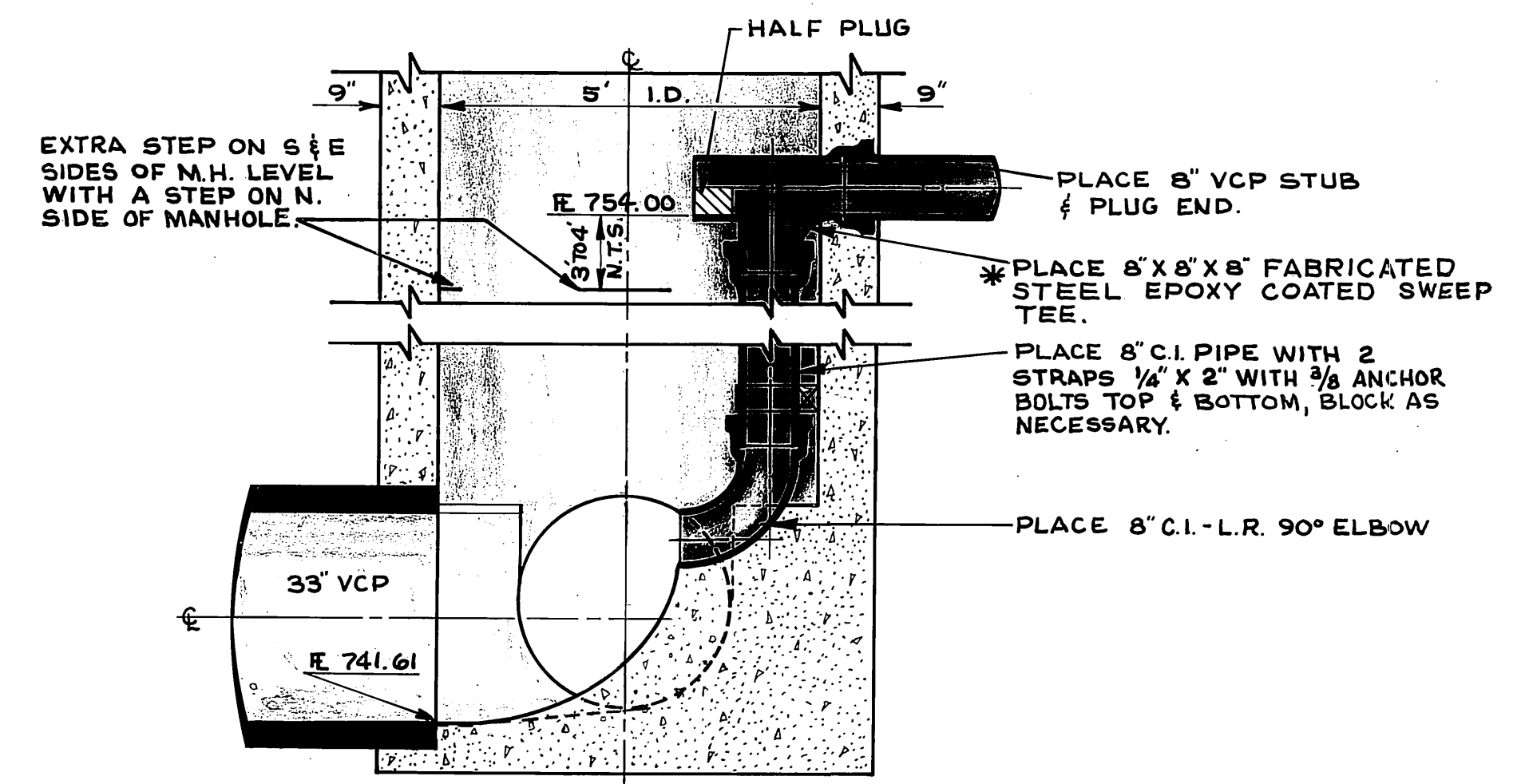
MEGGINSON TRUNK SEWER			
APPROVED BY	BY DATE	APPROVED BY	ACCOUNT No 533
PRINCIPAL ENGINEER	<i>[Signature]</i> 1/20		DRAWING NUMBER
PARK DEPARTMENT			S-787
TRAFFIC DIVISION		DIRECTOR OF PUBLIC WORKS	SHEET 1 OF 9
CHIEF PUB. WKS. ENGR.	<i>[Signature]</i> 1/4	DATE	
DESIGNED BY: <i>[Signature]</i> DRAWN BY: <i>[Signature]</i> CHECKED BY: <i>[Signature]</i>			



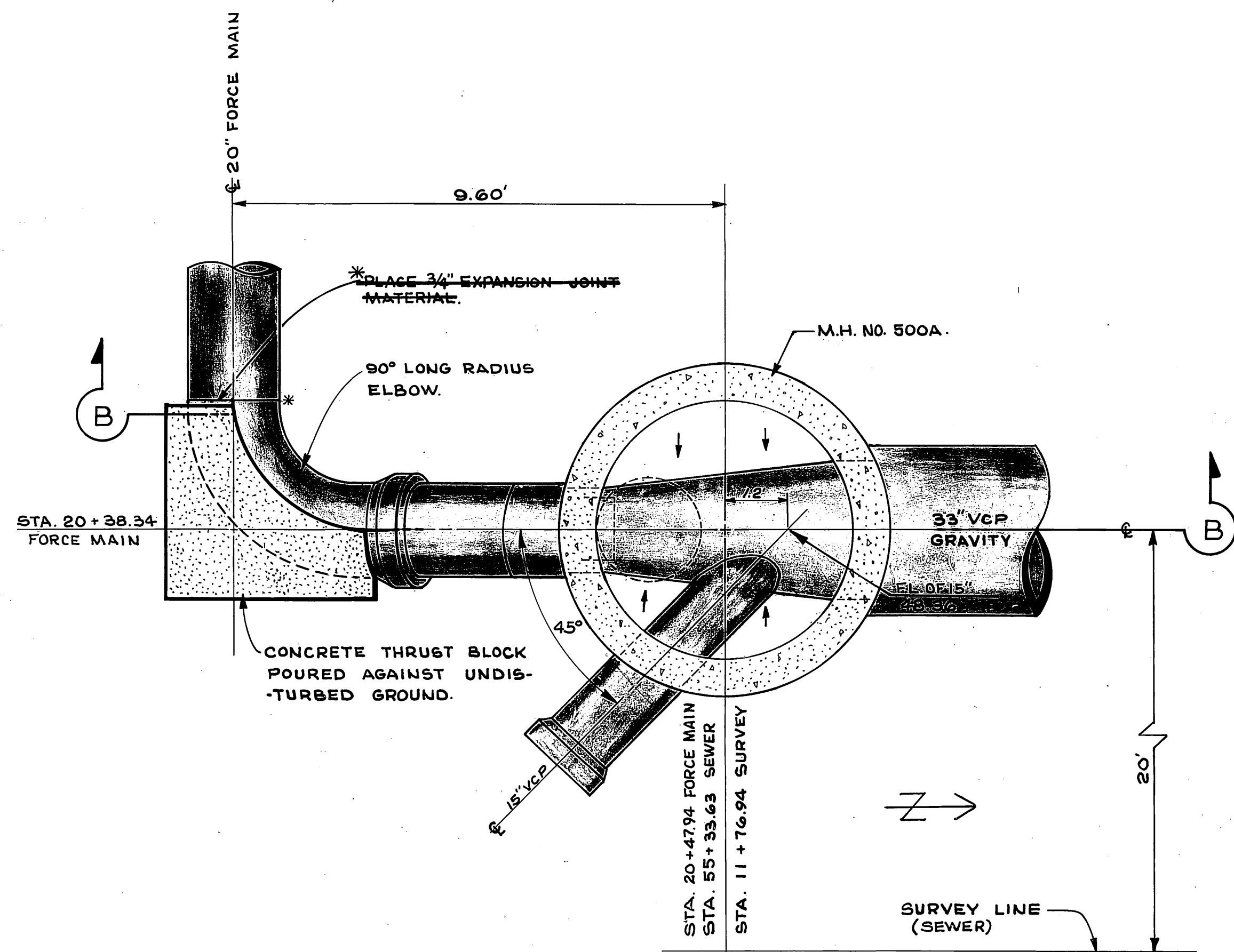
DETAIL NO. 1
(PLAN)
VAN BUREN AT CHALLENGER
(SHEET 3)



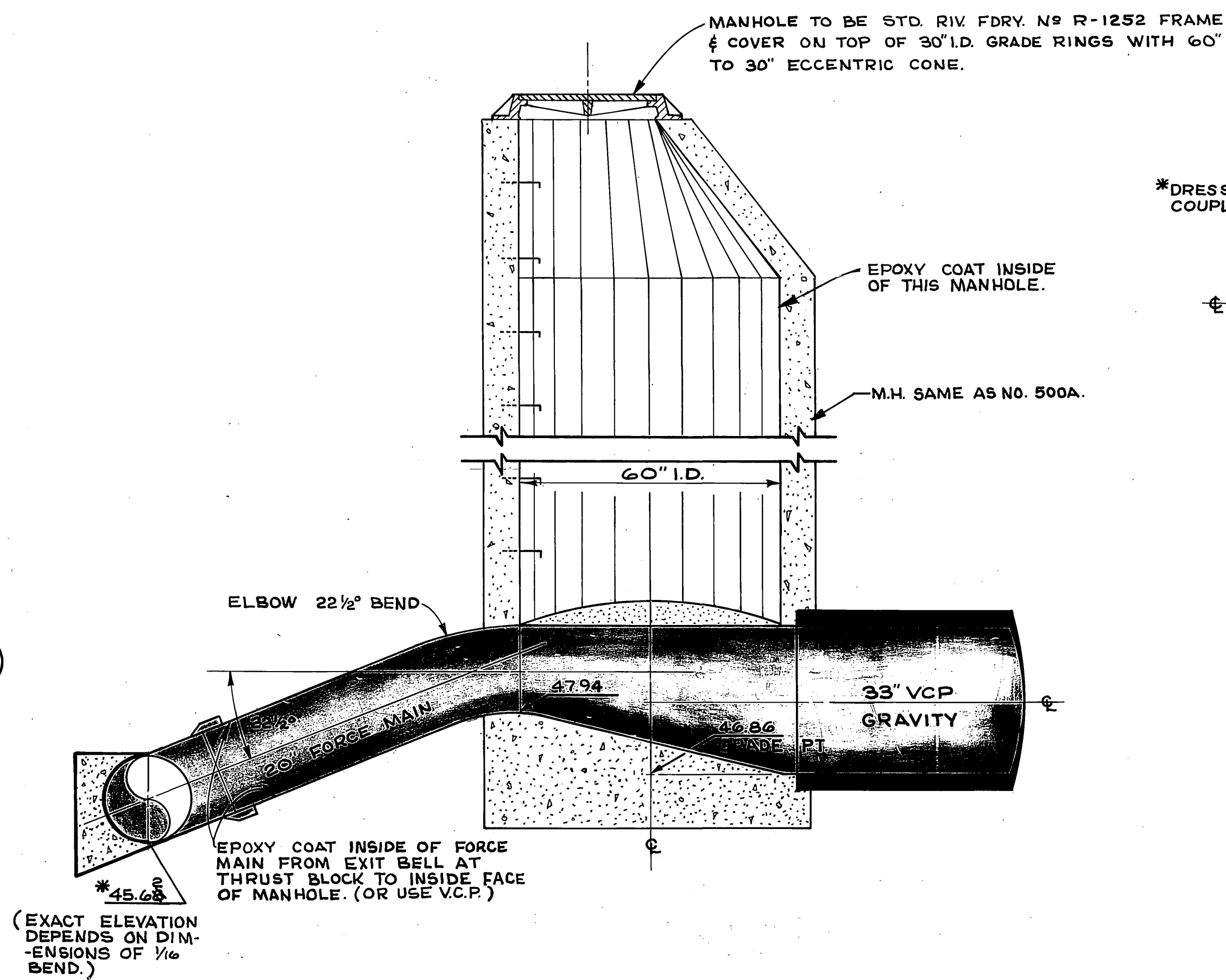
DETAIL NO. 2
(PLAN)
SELMA AT BOLTON
(SHEET 5)



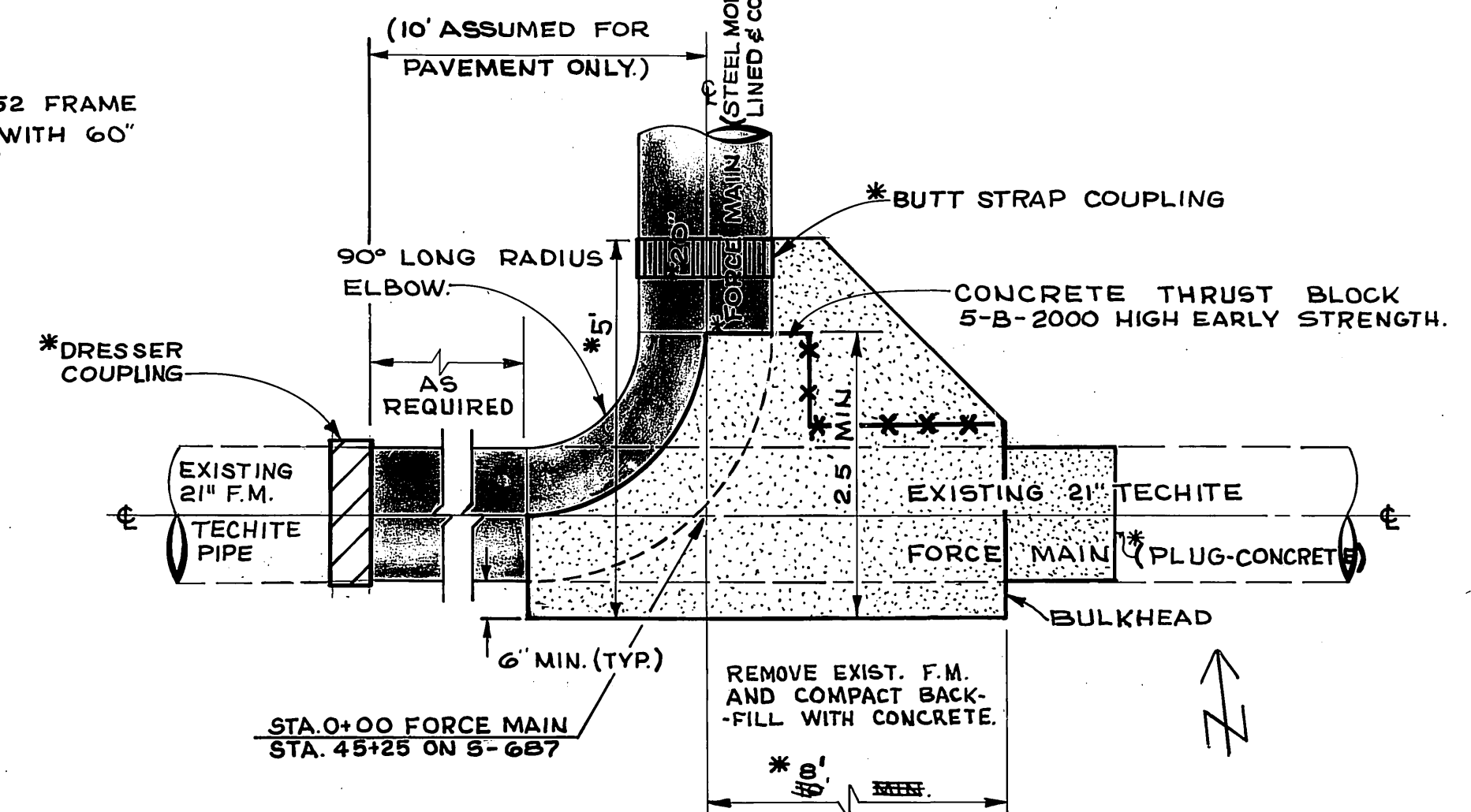
DETAIL NO. 2
(SECTION A-A)



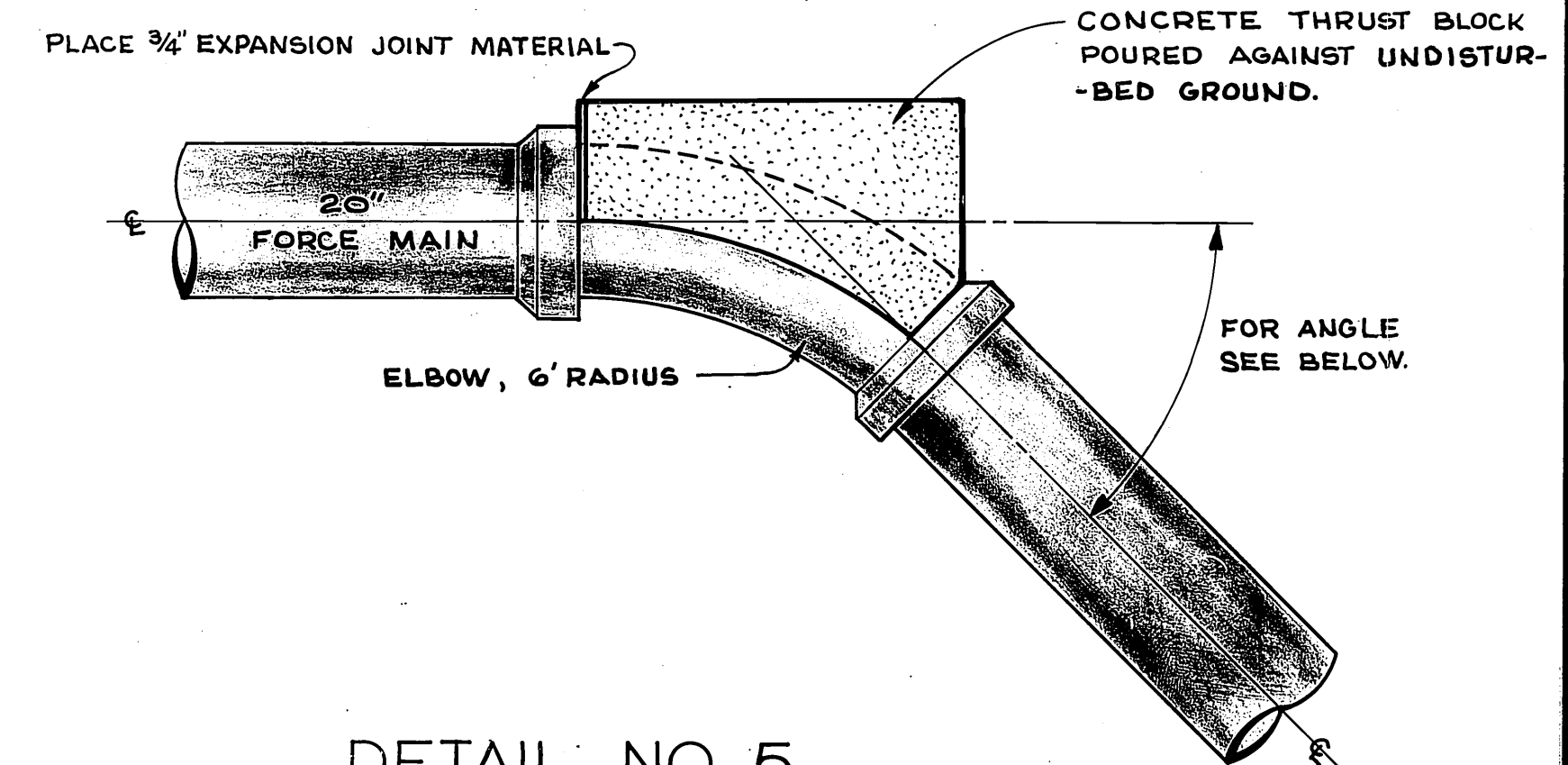
DETAIL NO. 3
(PLAN)
PLANTER AT MEGGINSON
(SHEET 7)



DETAIL NO. 3
(SECTION B-B)



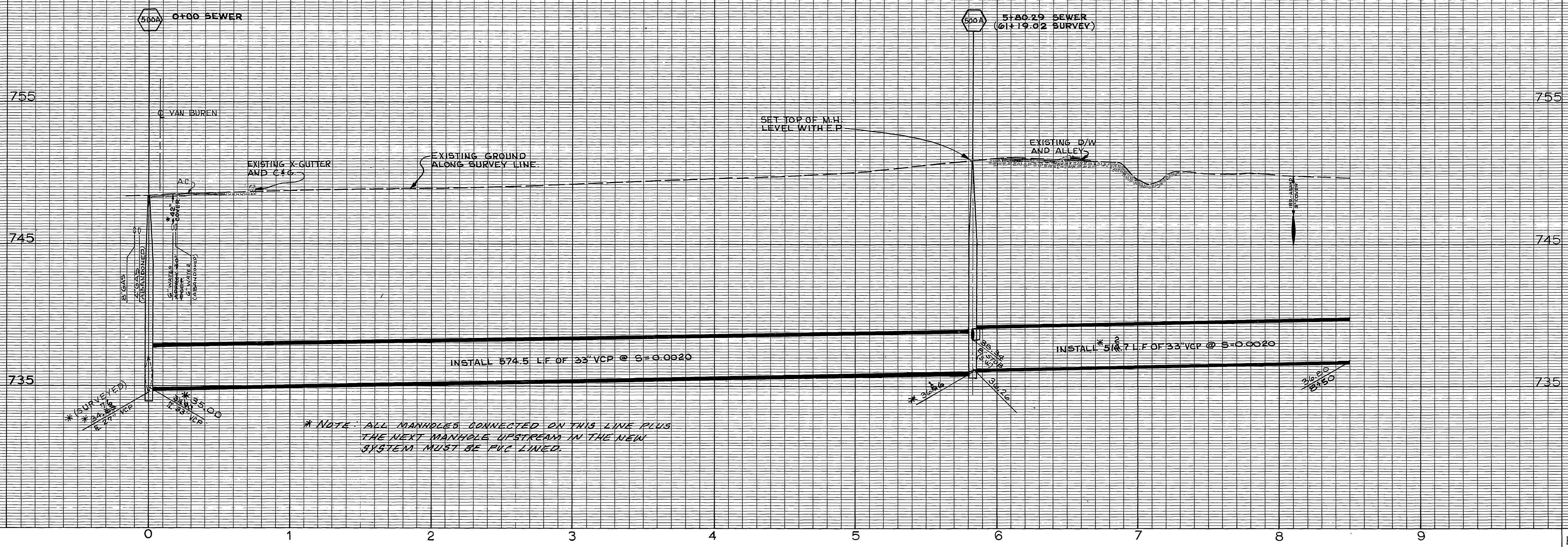
DETAIL NO. 4
(PLAN)
HOLE AVE. AT TYLER
CONNECTION TO EXIST. F.M.
(SHEET 9)



DETAIL NO. 5
(PLAN)
STA. 1+54 SHT. 9 OF 9—(45° ANGLE)
STA. 12+09.14 SHT. 8 OF 9—(35° ANGLE)

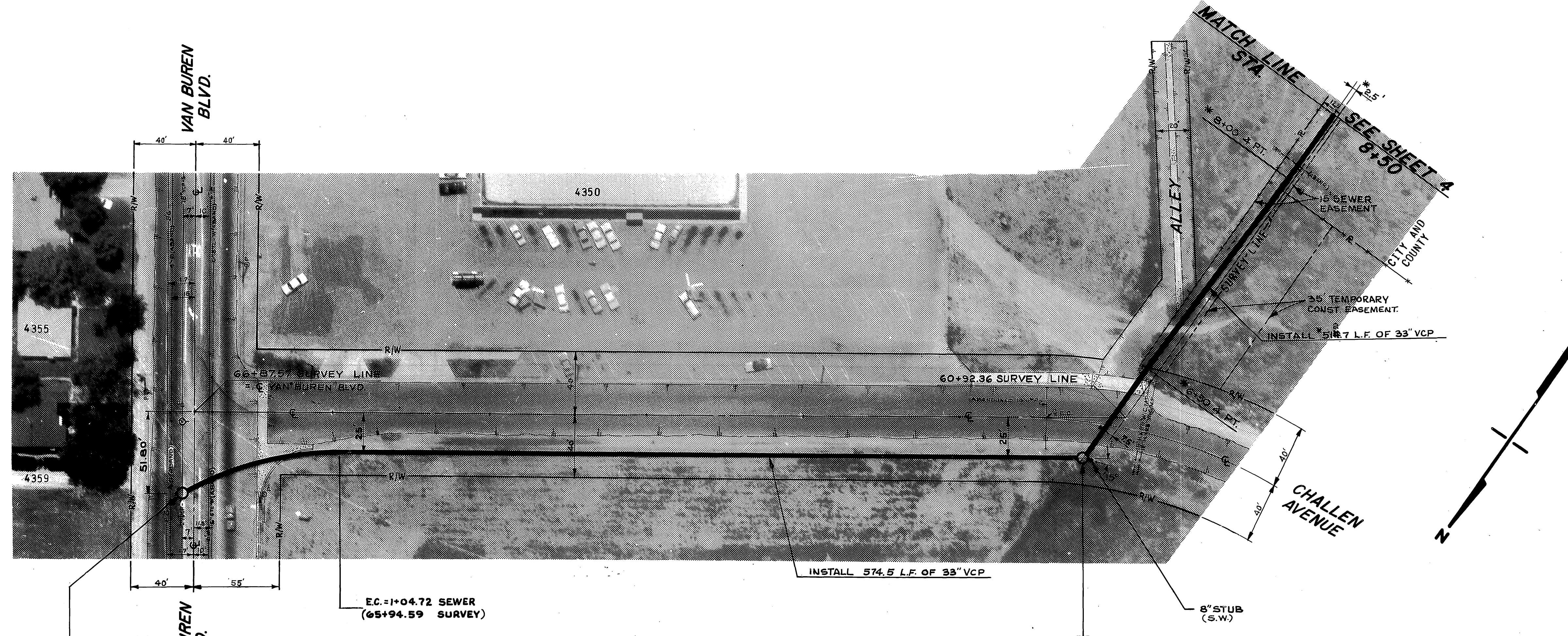
*AS BUILT 4/1/71 J.P.G.

CITY OF RIVERSIDE, CALIFORNIA PUBLIC WORKS DEPARTMENT				MEGGINSON TRUNK SEWER DETAIL SHEET		ACCOUNT No. 533 DRAWING NUMBER S-787 SHEET 2 OF 9
APPROVED BY	BY	DATE	APPROVED BY	BY	DATE	SCALE: 1" = 2'
PRINCIPAL ENGINEER	J.P.G.	7/32	DIRECTOR OF PUBLIC WORKS	[Signature]	1-4-11	
TRAFFIC DIVISION			CHIEF PUB. WKS. ENGR.			
DESIGNED BY: J. Cantu	DRAWN BY: R. Kim	CHECKED BY: J.P.G.				



B.M. ELEV. 747.995' P.K. NAIL IN N.W. C.B.
RET. OF VAN BUREN & CHALLENGE
F.B. 708/31 AND B.M. BOOK.

* NOTE:
CUT V-DITCH STA. 7+00 TO STA. 8+00
UNSTABLE SOIL - HIGH MOISTURE CONTENT.



500A
0+00 SEWER
SEE DETAIL #1
SHT. 2 OF 9
(19+56.62 S-629
SHEET 3)

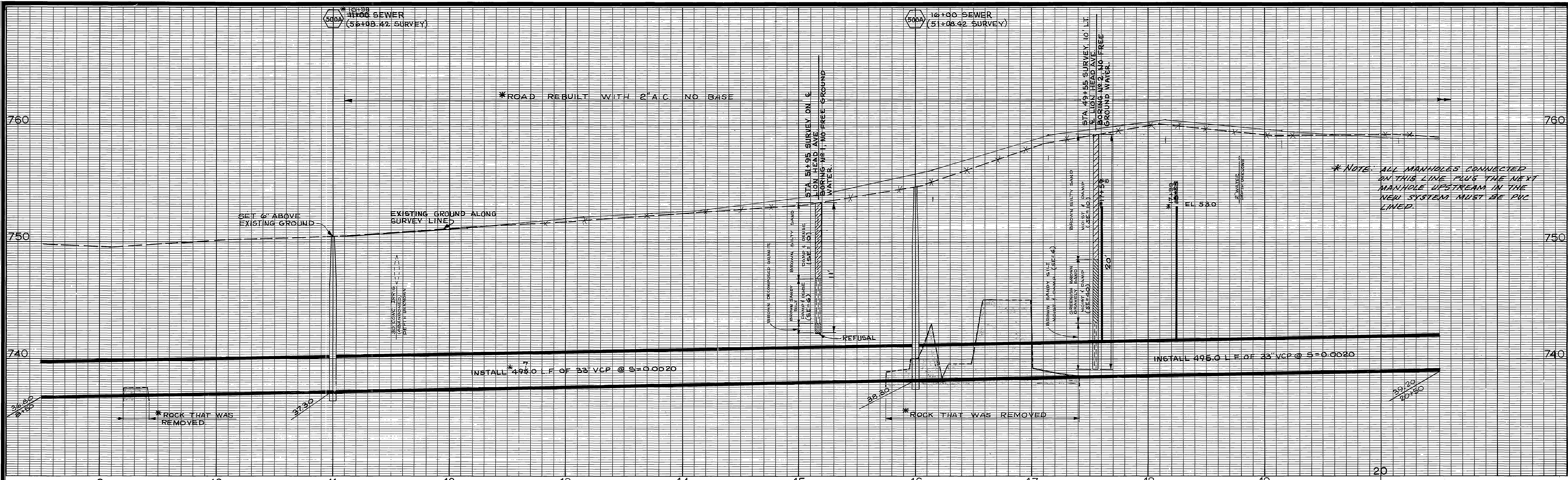
EC. = 1+04.72 SEWER
(65+94.59 SURVEY)

CURVE DATA
SEWER @
R = 200'
Δ = 30°
T = 53.58'
L = 104.72'

500B
5+80.29 SEWER
(61+19.02 SURVEY)

* AS BUILT 4/2/71 J.F.G.
* As built 2.4.85 J.E.

CITY OF RIVERSIDE, CALIFORNIA PUBLIC WORKS DEPARTMENT		MEGGINSON TRUNK SEWER Challen Ave.		ACCOUNT NO 533
APPROVED BY PRINCIPAL ENGINEER PARK DEPARTMENT TRAFFIC DIVISION CHIEF PUB. WKS. ENGR.	BY DATE 1/18/80	APPROVED BY DIRECTOR OF PUBLIC WORKS	DRAWING NUMBER S-787	
REVISIONS			PLAN & PROFILE	
DESIGNED BY <i>Van Buren</i> DRAWN BY <i>R. Van Buren</i> CHECKED BY <i>J.F.G.</i>			SHEET 3 OF 4	
DATE 1/11/80			HORIZ. SCALE: 1" = 40' VERT. SCALE: 1" = 4'	

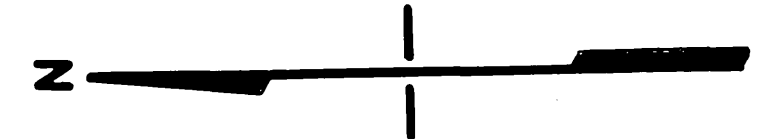
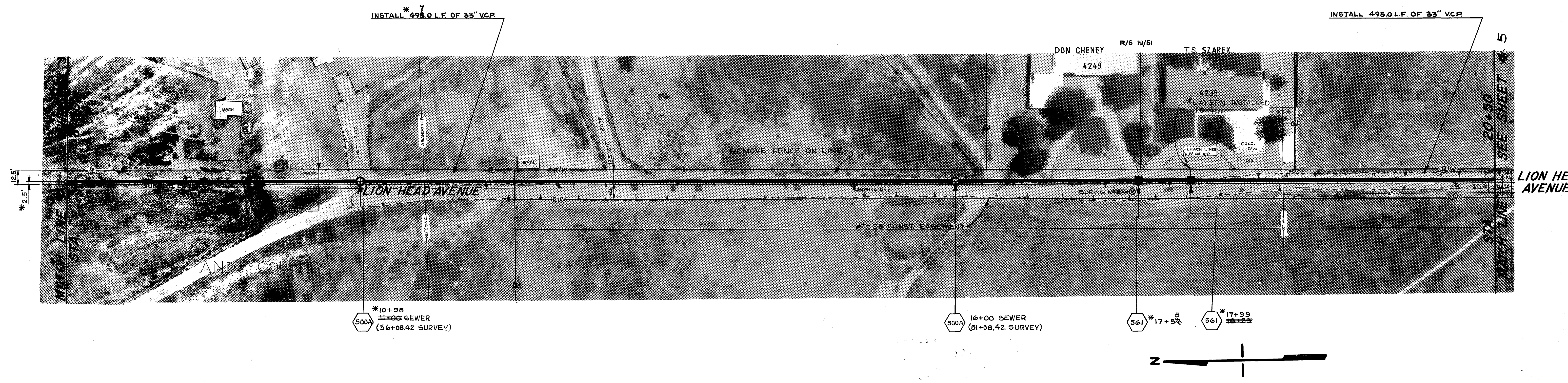


*** NOTE:**
 CUT V-DITCH UNSTABLE SILTY SAND; FROM STA. 13+25 TO STA. 15+50, AND FROM STA. 17+50 TO STA. 21+00.

*** NOTE:** ALL MANHOLES CONNECTED ON THIS LINE PLUS THE NEXT MANHOLE UPSTREAM IN THE NEW SYSTEM MUST BE PVC LINED.

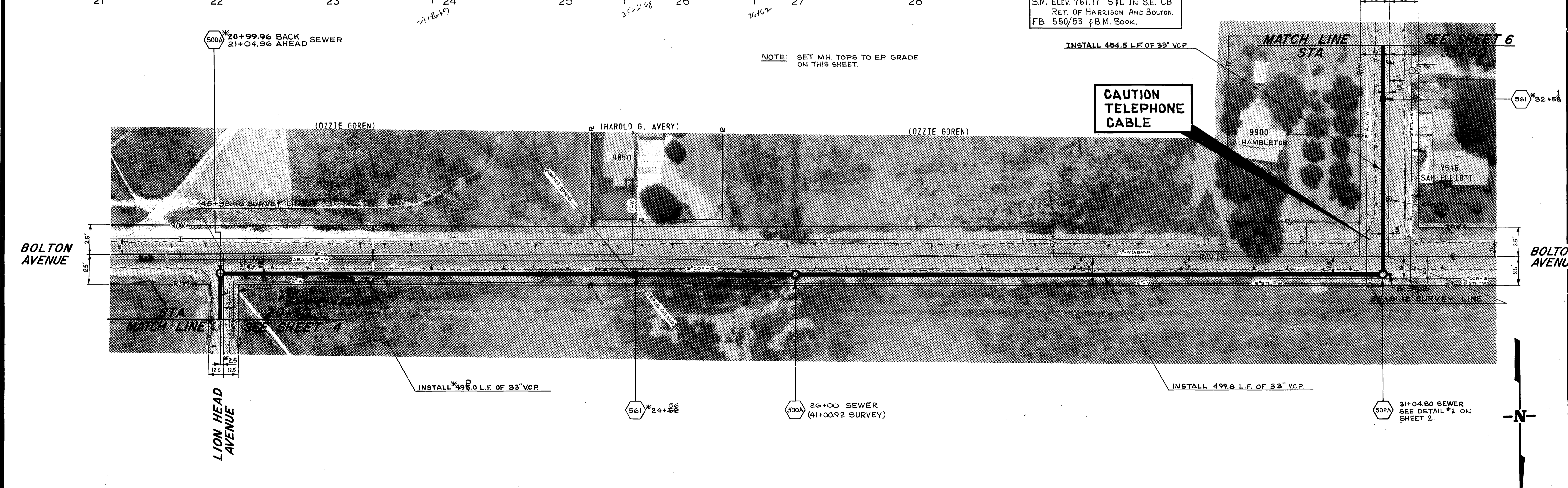
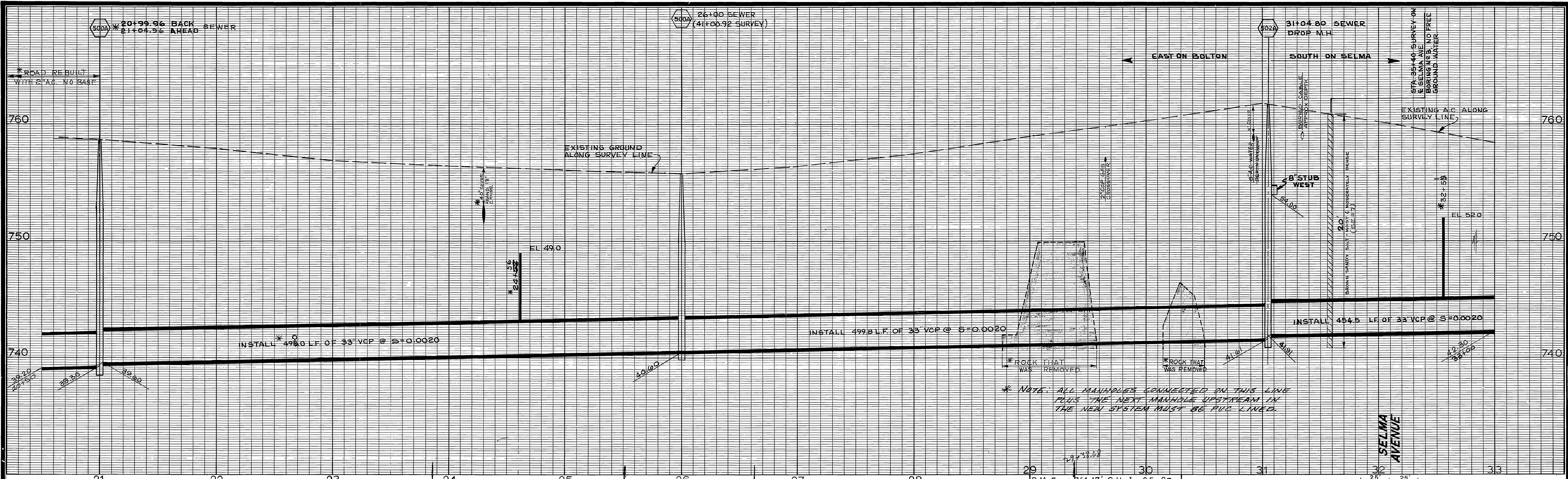
B.M. ELEV. 747.995' P.K. NAIL IN NW C6 RET. OF VAN BUREN & CHALLEN. F.B. 708/31 AND B.M. BOOK.

(SEISMIC PROFILE AVAILABLE)



* AS BUILT 4/21/71 JPG.
 * AS BUILT 2-4-88 JPG.

CITY OF RIVERSIDE, CALIFORNIA PUBLIC WORKS DEPARTMENT		MEGGINSON TRUNK SEWER Lion Head PLAN & PROFILE		ACCOUNT NO 533 DRAWING NUMBER S-787 SHEET 4 OF 9
APPROVED BY PRINCIPAL ENGINEER PARK DEPARTMENT TRAFFIC DIVISION DESIGNED BY <i>J. Carls</i> DRAWN BY <i>P. Kuhn</i> CHECKED BY <i>P. Kuhn</i>	BY <i>[Signature]</i> DATE <i>7/20</i> APPR. DATE <i>7/4</i>	APPROVED BY DIRECTOR OF PUBLIC WORKS DATE <i>7-1-74</i>	HORIZ. SCALE: 1" = 40' VERT. SCALE: 1" = 4'	

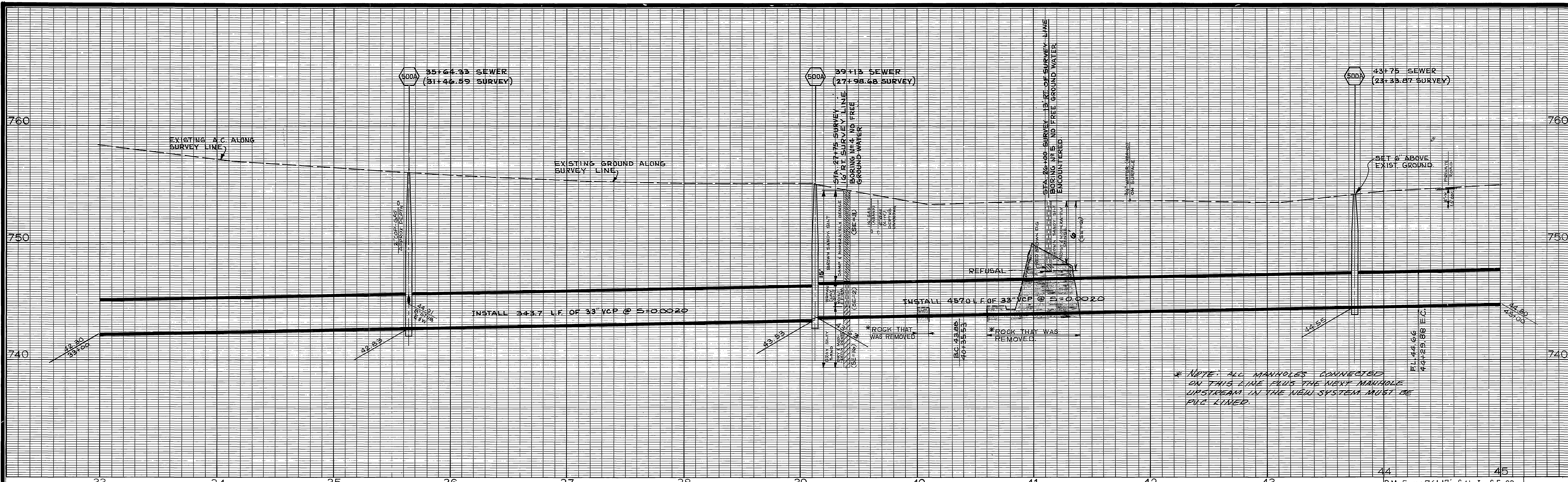


NOTE: SET M.H. TOPS TO EP GRADE ON THIS SHEET.

* NOTE: ALL MANHOLES CONNECTED ON THIS LINE PLUS THE NEXT MANHOLE UPSTREAM IN THE NEW SYSTEM MUST BE PUG LINED.

* AS BUILT 4/2/71 J.P.G.
* As built 2.8.88 T.C.

<p align="center">- CAUTION - PACIFIC TELEPHONE CABLES UNDERGROUND BEFORE EXCAVATING</p> <p align="center">CALL COLLECT: 7:30 A.M. to 5 P.M. & Holidays Orange County 714-633-0811 714-547-6606 Riverside County 714-684-0071 714-547-6606</p>	<p align="center">CITY OF RIVERSIDE, CALIFORNIA PUBLIC WORKS DEPARTMENT</p>		<p align="center">MEGGINSON TRUNK SEWER Bolton Ave PLAN & PROFILE</p>		<p>ACCOUNT NO 533 DRAWING NUMBER S-787 SHEET 5 OF 5</p>
	<p>APPROVED BY: [Signature] DATE: 1/2/80 PRINCIPAL ENGINEER TRAFFIC DIVISION DESIGNED BY: J. Cantle DRAWN BY: R. G. [Signature] CHECKED BY: [Signature]</p>	<p>BY DATE: [Signature] 1/2/80 PARK DEPARTMENT CHIEF PUB. WKS. ENGR.</p>	<p>APPROVED BY: [Signature] DIRECTOR OF PUBLIC WORKS DATE: 1-2-80</p>	<p>HORIZ. SCALE: 1" = 40' VERT. SCALE: 1" = 4'</p>	

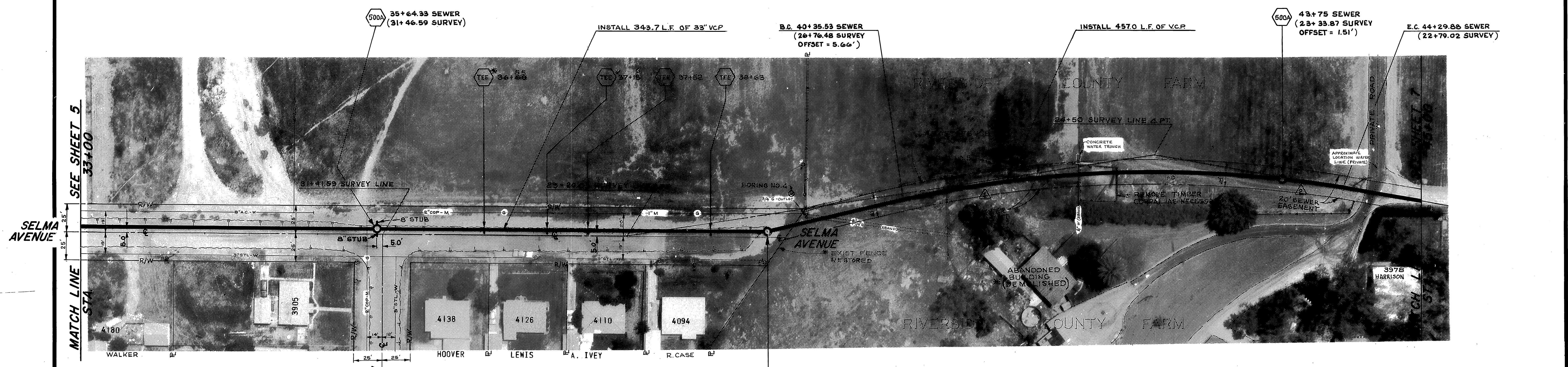


(SEISMIC PROFILE AVAILABLE)

* NOTE VERTICAL TRENCH IN STABLE SOIL

B.M. ELEV. 761.17' S&L IN S.E. CB RET. OF HARRISON AND BOLTON. F.B. 550/53 & B.M. Book.

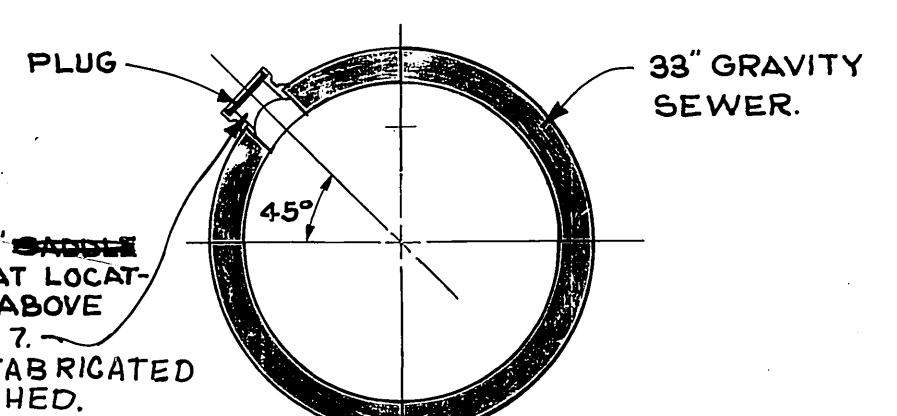
* NOTE: ALL MANHOLES CONNECTED ON THIS LINE PLUS THE NEXT MANHOLE UPSTREAM IN THE VIBU SYSTEM MUST BE P.V.C. LINED.



SEE SHEET 5 33+00

SELMA AVENUE

TOMLINSON AVENUE



INSTALL 4\"/>

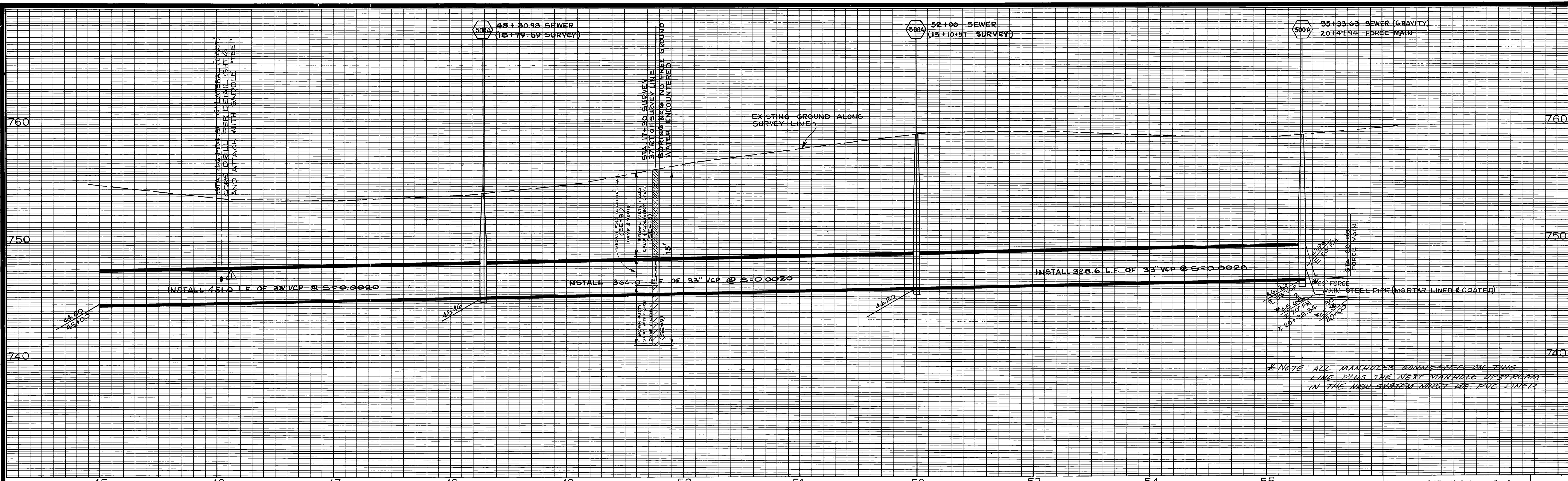
SELMA AVE. TYP. SADDLE DETAIL

CURVE DATA SEWER @

R=1000'	R=1000'
Δ=19° 27' 01"	Δ=3° 08' 40"
T=171.38'	T=27.45'
L=339.47'	L=54.88'

* AS BUILT 4/2/71 J.P.G. * AS BUILT 2.4.88 T.E.

CITY OF RIVERSIDE, CALIFORNIA PUBLIC WORKS DEPARTMENT		MEGGINSON TRUNK SEWER Selma Ave.		ACCOUNT NO 533 DRAWING NUMBER S-787
APPROVED BY PRINCIPAL ENGINEER PARK DEPARTMENT TRAFFIC DIVISION CHIEF PUB. WKS. ENGR. COUNTY OF RIVERSIDE		APPROVED BY DATE DIRECTOR OF PUBLIC WORKS		SHEET 6 OF 9
DESIGNED BY: <i>Carly</i> DRAWN BY: <i>R. Kim</i> CHECKED BY: <i>PCA</i>		HORIZ. SCALE: 1" = 40' VERT. SCALE: 1" = 4'		

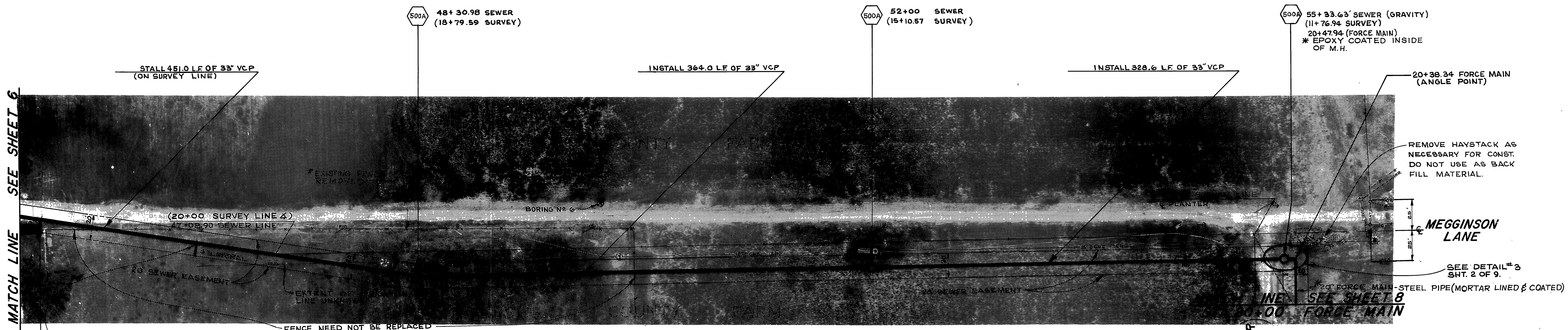


NOTE: SET ALL MANHOLES ON THIS SHEET TO 6" ABOVE EXISTING GROUND.

*NOTE: CUT V-DITCH IN UNSTABLE SILTY SAND FROM STA. 51+00 TO STA. 55+34

B.M. Elev. 753.82' P.K. NAIL IN CNTR OF S.E. CORNER HUGHES ALLEY AND MAGNOLIA AVE. F.B. 732/36

*NOTE: ALL MANHOLES CONNECTED ON THIS LINE PLUS THE NEXT MANHOLE UPSTREAM IN THE NEW SYSTEM MUST BE PVC LINED

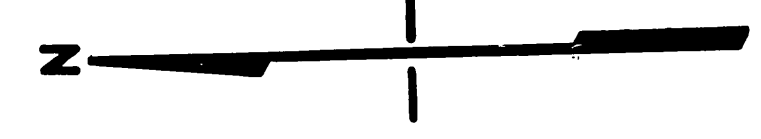


MATCH LINE SEE SHEET 6

REMOVE HAYSTACK AS NECESSARY FOR CONST. DO NOT USE AS BACK FILL MATERIAL.

MEGGINSON LANE

PLANTER STREET

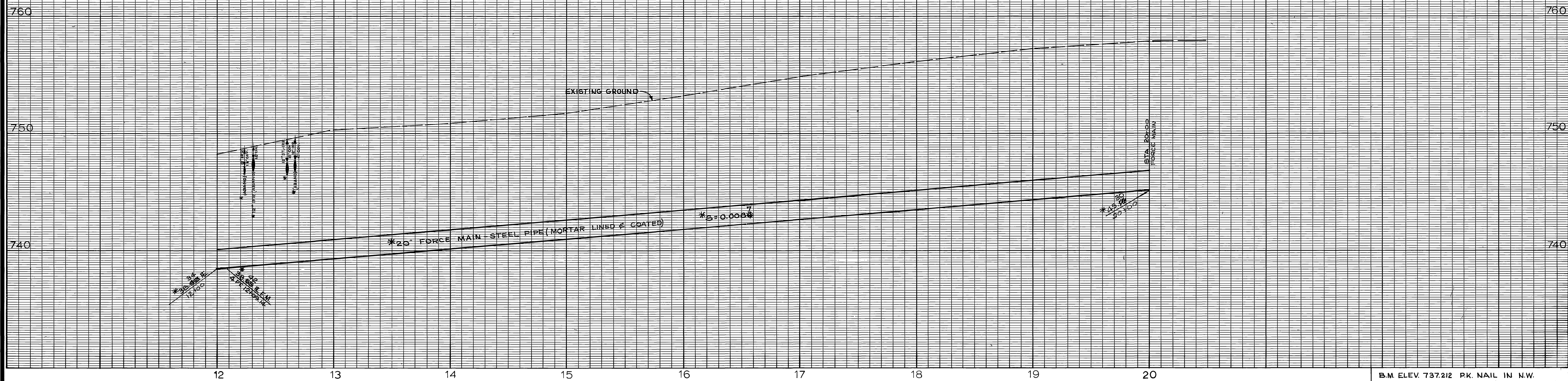


INSTALL LATERAL PER SADDLE DETAIL ON SHEET 6 EXTEND LATERAL TO EASEMENT LINE & CONST. PRIVATE MH. OUTSIDE ESMT.

*45+15 SEE DETAIL ON SHEET 6.

*AS BUILT 4/2/71 J.P.G.
*As built 2-4-88 J.E.

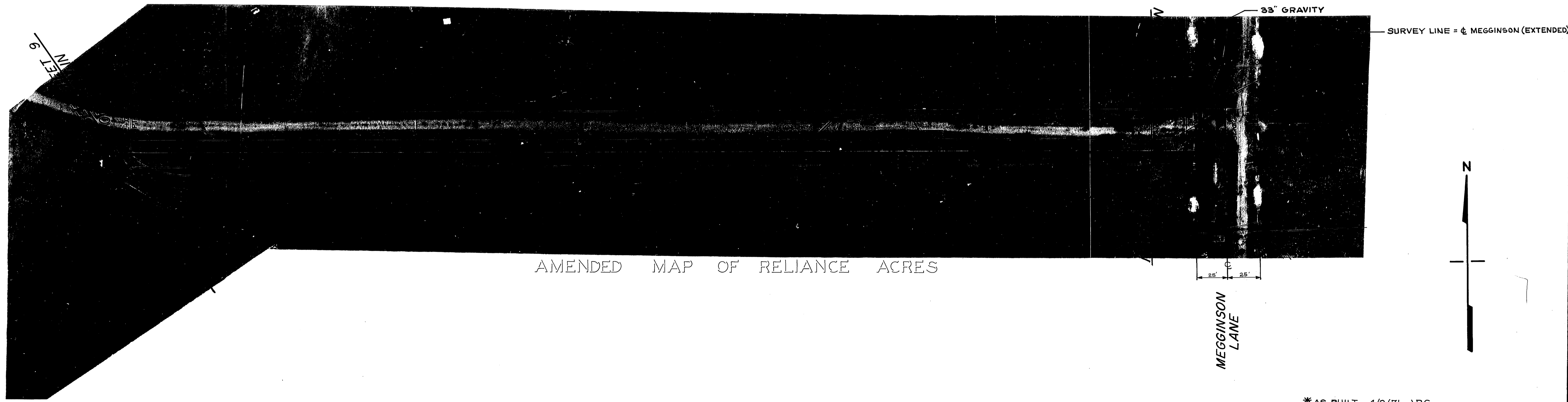
<p>GABEL, COOK & BECKLUND, INC. 1041 N. MAIN ST., STE 1-B, RIVERSIDE, CA 92501 714 788-8092</p> <p>APPROVED BY: <i>[Signature]</i> DATE: 3 AUG 1990 RCE 23121 EXPIRES 31 DEC 93</p>	<p>CITY OF RIVERSIDE, CALIFORNIA PUBLIC WORKS DEPARTMENT</p>		<p>MEGGINSON TRUNK SEWER County Farm.</p>		<p>ACCOUNT # 533 DRAWING NUMBER S-787</p>
	<p>APPROVED BY: <i>[Signature]</i> DATE: 1-4-71</p>	<p>BY: <i>[Signature]</i> DATE: 10/30</p>	<p>APPROVED BY: <i>[Signature]</i> DATE: 1-4-71</p>	<p>PLAN & PROFILE</p>	
<p>DESIGNED BY: <i>[Signature]</i> DRAWN BY: <i>[Signature]</i> CHECKED BY: <i>[Signature]</i></p>		<p>REVISIONS: <i>[Signature]</i></p>		<p>HORIZ. SCALE: 1" = 40' VERT. SCALE: 1" = 4'</p>	



*NOTE:
CUT V-DITCH IN UNSTABLE SILTY SAND.

B.M. ELEV. 737.212 PK. NAIL IN N.W.
CB. RETURN OF TYLER & HOLE (FB 706/9)
F.B. 917/64-70

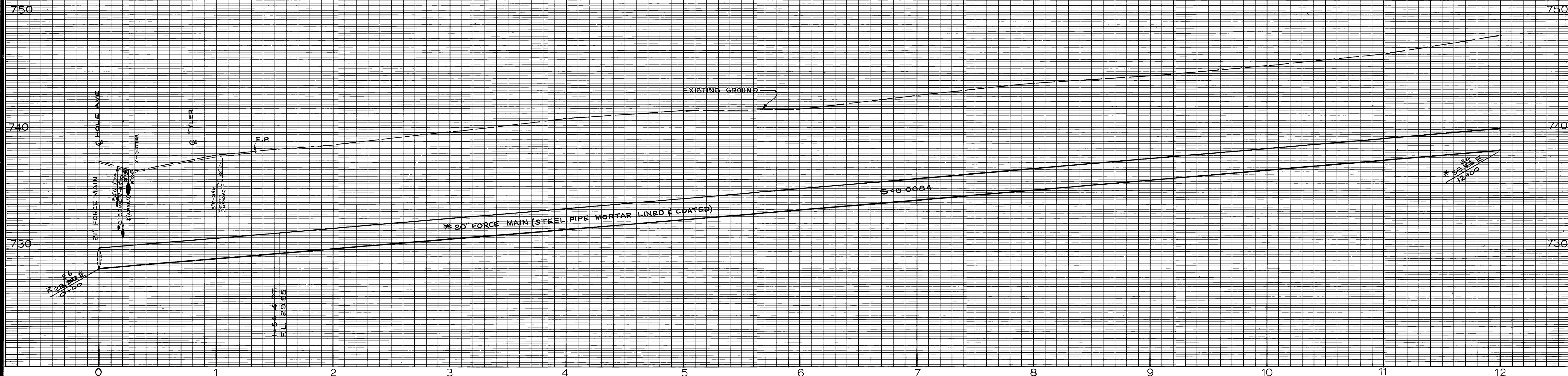
B.M. ELEV. 753.82 PK. NAIL IN CNTR OF
S.E. CB. RETURN HUGHES ALLEY
AND MAGNOLIA AVE.
F.B. 732/36



AMENDED MAP OF RELIANCE ACRES

* AS BUILT 4/2/71 J.P.G.

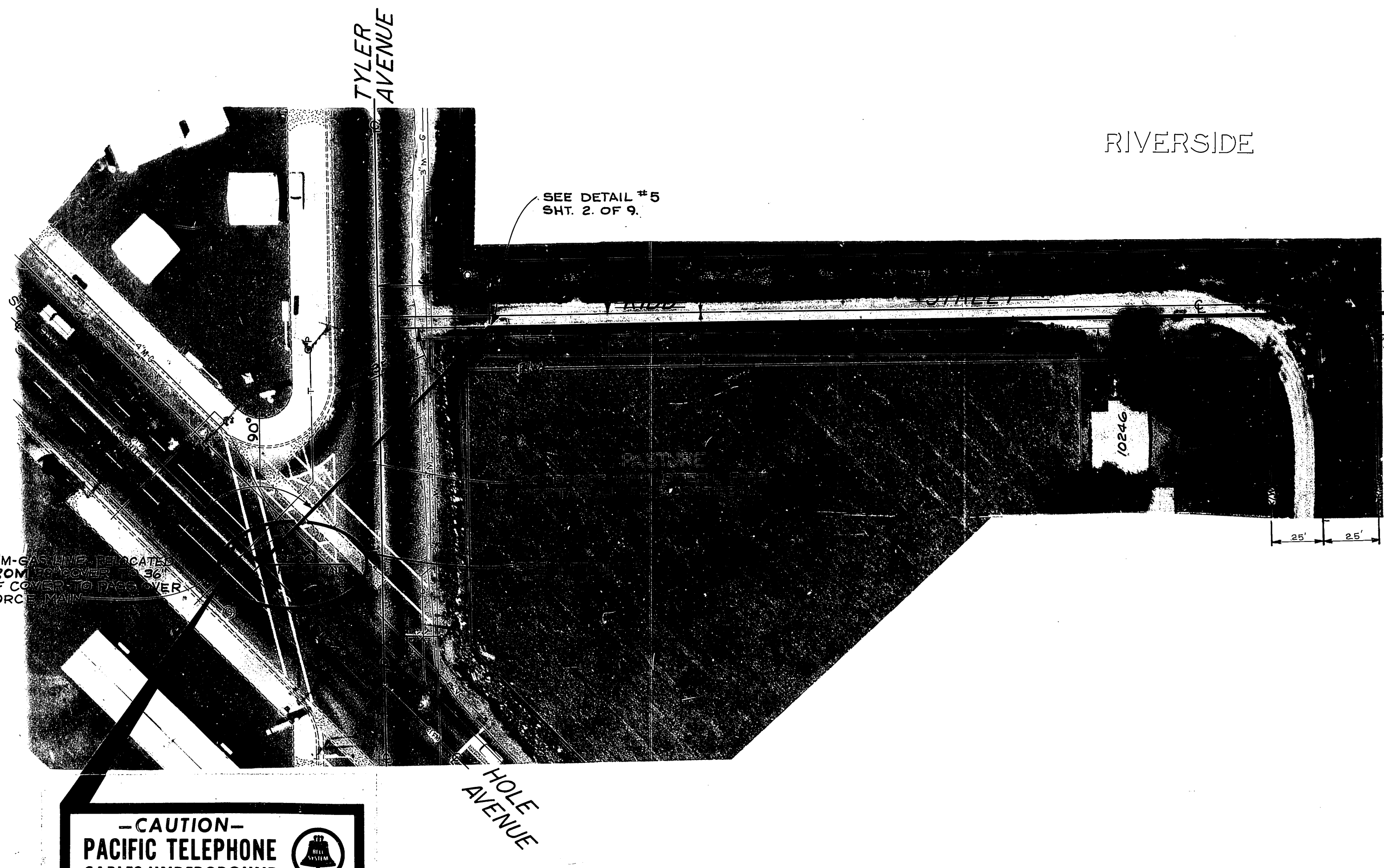
CITY OF RIVERSIDE, CALIFORNIA PUBLIC WORKS DEPARTMENT		MEGGINSON TRUNK SEWER County Farm.		ACCOUNT NO. 533 DRAWING NUMBER S-787
APPROVED BY	BY	DATE	APPROVED BY	
PRINCIPAL ENGINEER	[Signature]	4/30	[Signature]	
PARK DEPARTMENT			DIRECTOR OF PUBLIC WORKS	
TRAFFIC DIVISION				
DESIGNED BY <i>L. Coyle</i>	DRAWN BY <i>E. Kilm</i>	CHECKED BY <i>[Signature]</i>	DATE 1-4-71	SHEET 3 OF 9
HORIZ. SCALE: 1" = 40'			VERT. SCALE: 1" = 4'	



* NOTE:
CUT V-DITCH IN UNSTABLE SILTY SAND.

B.M. ELEV. 737.212 P.K. NAIL IN N.W.
C.B. RETURN OF TYLER & HOLE (F.B. 706/9)
F.B. 917/64-70

RIVERSIDE COUNTY FARM



*(STEEL PIPE MORTAR LINED & COATED)
20' FORCE MAIN
(ON SURVEY LINE)

20' SEWER EASEMENT

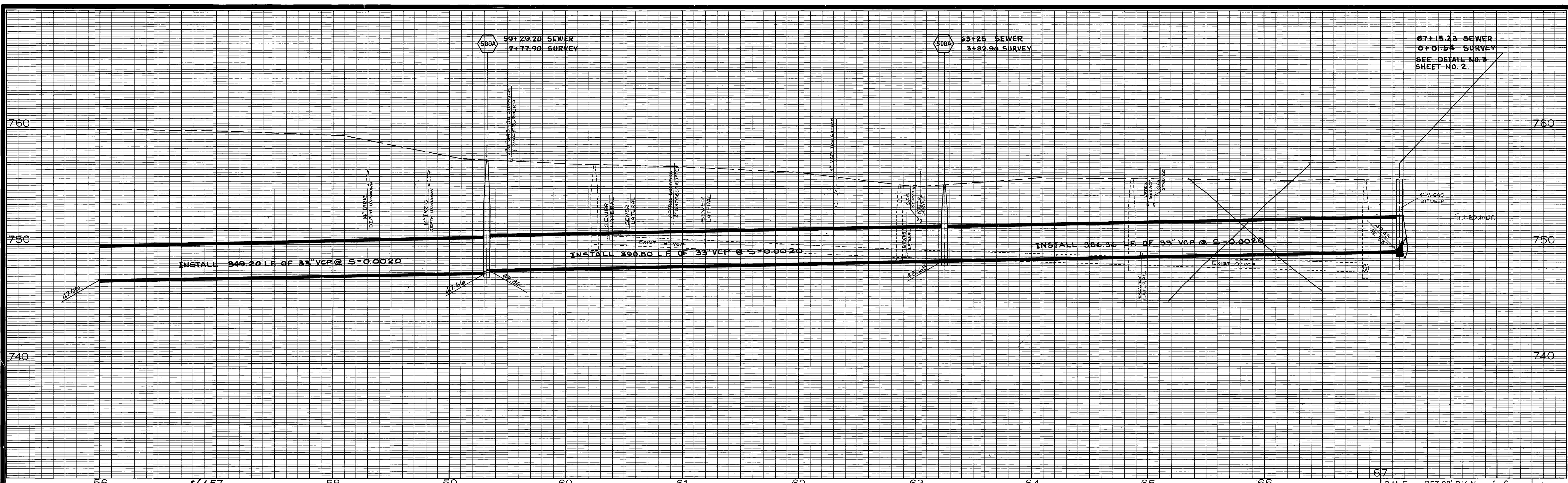
AMENDED MAP OF RELIANCE ACRES

SEE SHEET 8
FORCE MAIN
MATCH LINE
STA. 12+00

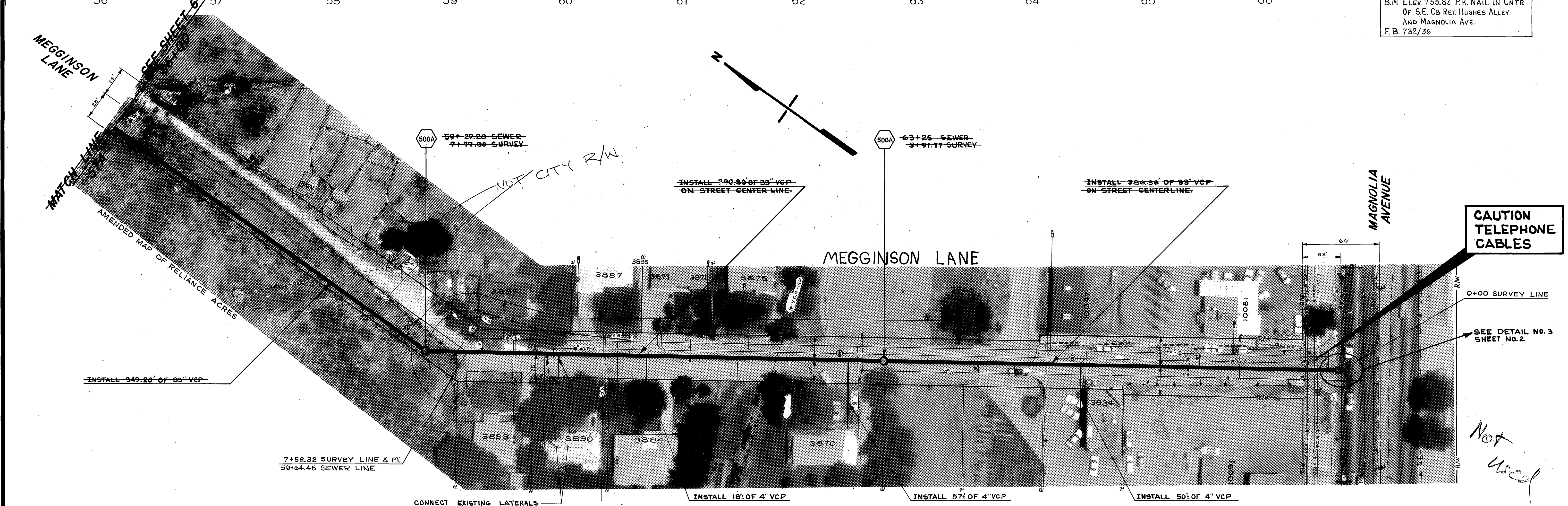
*AS BUILT 4/5/71 J.P.G.

-CAUTION-
PACIFIC TELEPHONE
CABLES UNDERGROUND
BEFORE EXCAVATING
CALL COLLECT:
7:30 A.M. to 5 P.M. & Holidays
Orange County 714-633-0811 714-547-6606
Riverside County 714-684-0071 714-547-6606

FOR KIDD ST. REALIGNMENT, REFER TO PLAN # R-2879 Sh. 2 of 4 DATE 3/16/85		CITY OF RIVERSIDE, CALIFORNIA PUBLIC WORKS DEPARTMENT		MEGGINSON TRUNK SEWER Hole Ave, Kidd Street connection.		ACCOUNT NO. 533 DRAWING NUMBER S-787
APPROVED BY	BY	DATE	APPROVED BY	BY	DATE	SHEET 9 OF 9 HORIZ. SCALE: 1" = 40' VERT. SCALE: 1" = 4'
PRINCIPAL ENGINEER		10/30	DIRECTOR OF PUBLIC WORKS		1-4-71	
TRAFFIC DIVISION			CHIEF PUB. WKS. ENGR.			
DESIGNED BY	DRAWN BY	CHECKED BY				



B.M. ELEV. 753.82' P.K. NAIL IN CNTR
OF S.E. CB RET. HUGHES ALLEY
AND MAGNOLIA AVE.
F.B. 732/36



NOTE:
-CONNECT EXISTING SEWER LATERALS
-WHERE SHOWN TO 33" SEWER-SEE
-DETAIL NO. 3 - RELAY LATERALS-WHERE
-SHOWN, OR AS DIRECTED.

CITY OF RIVERSIDE, CALIFORNIA PUBLIC WORKS DEPARTMENT		-MEGGINSON TRUNK SEWER- -Megginson Lane- -PLAN & PROFILE-		ACCOUNT NO 533 DRAWING NUMBER S-787 SHEET 3 OF 3
APPROVED BY PRINCIPAL ENGINEER PARK DEPARTMENT TRAFFIC DIVISION CHIEF PUB. WKS. ENGR.	BY DATE	APPROVED BY DIRECTOR OF PUBLIC WORKS	DATE	HORIZ. SCALE: 1" = 40' VERT. SCALE: 1" = 4'
DESIGNED BY <i>A. Cantu</i> DRAWN BY <i>R. Kim</i> CHECKED BY				

RK