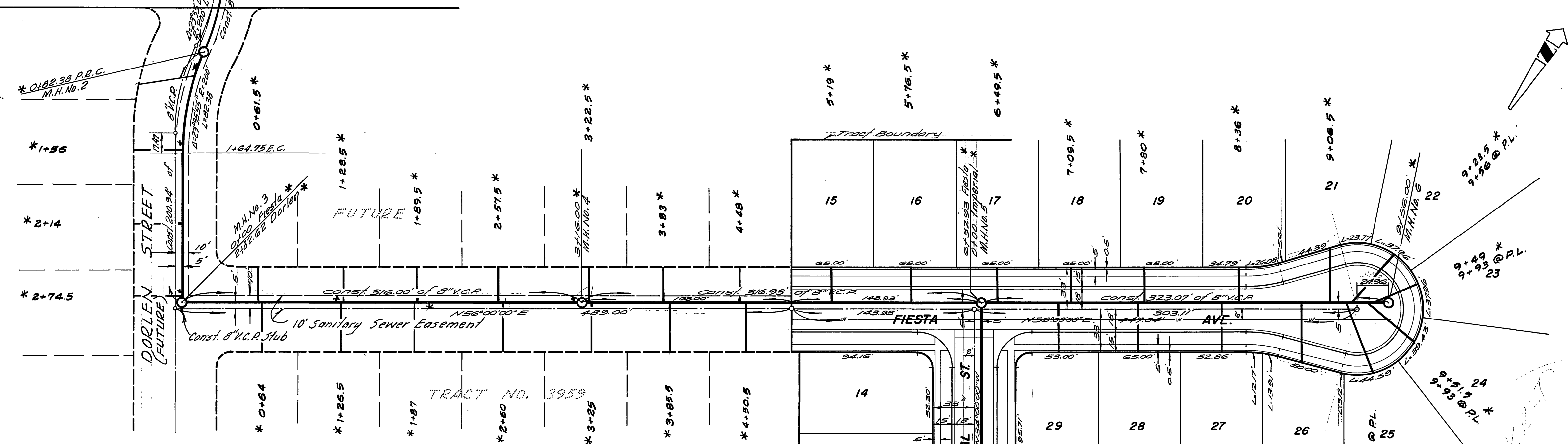


BENCH MARK
 PK nail in center of curb return at the N.W. corner of Washington St. and Lincoln Ave. Elev. 912.605
 c/a F.B. 610/52

- GENERAL NOTES
- Construction shall be in accordance with the City of Riverside, Department of Public Works, Standard Specifications No. 499 and Standard Drawings.
 - It shall be the responsibility of the contractor to clear the right of way in accordance with the provisions of the law as it affects each utility, including irrigation lines, and appurtenances and at no cost to the City.
 - Joints shall be in conformance to A.S.T.M. Specifications C425-64 Type J or III or C-594-667 (Band Seal) with certain exceptions or modifications on file with the City Engineer.
 - Pipe shall be bonded per Code of Standard Drawings No. 499, unless otherwise specified on plan.
 - Location of vags and laterals to be determined at the direction of the Owner.
 - All studs and laterals to be installed in accordance with Standard Drawing No. 362. Studs shall be plugged and capped.
 - Manhole frames and covers to be set to existing pavement grade.
 - Manholes to be 48" and extended to eave height.
 - In the construction of these plans, no field notes were used. The Chief Engineer, for himself and his assistants, is not responsible for any errors or omissions.



QUANTITY ESTIMATE

| | |
|-------------------|------------|
| 8" V.C.P. | 2,012 L.F. |
| 4" V.C.P. | 1,787 L.F. |
| 8" x 4" Wyes | 55 Ea. |
| Manholes Std. 500 | 8 Ea. |
| Cleanout Std. 560 | 1 Ea. |
| 8" x 4" Saddles | 8 Ea. |

ALBERT A. WEBB ASSOCIATES
 CIVIL ENGINEERS
 RIVERSIDE, CALIFORNIA

APPROVED BY: *Albert A. Webb* DATE: 3/3/70
 R.E. No. 9876

W.O. 89-349 FOR: RINCON DEV. F.B. 1014

DESIGNED BY: *ELC* DRAWN BY: *ELM* CHECKED BY: *ELC*

| NO. | REVISIONS | DATE |
|-----|--------------------------------------|---------|
| 1 | Sheet Grade lowered for dirt balance | 7-21-70 |

Approved: *Howard D. Orsen*
 General Superintendent / Chief Engineer - Water Div.
 Date: 3-26-70

CITY OF RIVERSIDE, CALIFORNIA
 PUBLIC WORKS DEPARTMENT

APPROVED BY: *Howard D. Orsen* DATE: 3/24/70
 PRINCIPAL ENGINEER
 PARK DEPARTMENT
 TRAFFIC DIVISION
 CHIEF PUB. WKS. ENGR.

APPROVED BY: *Howard D. Orsen*
 DIRECTOR OF PUBLIC WORKS

DATE: 6-4-70

* AS BUILT 9/23/70 BY KARL
 9/23/70 - norm

SEWER PLAN AND PROFILE

FIESTA STREET AND EASEMENT

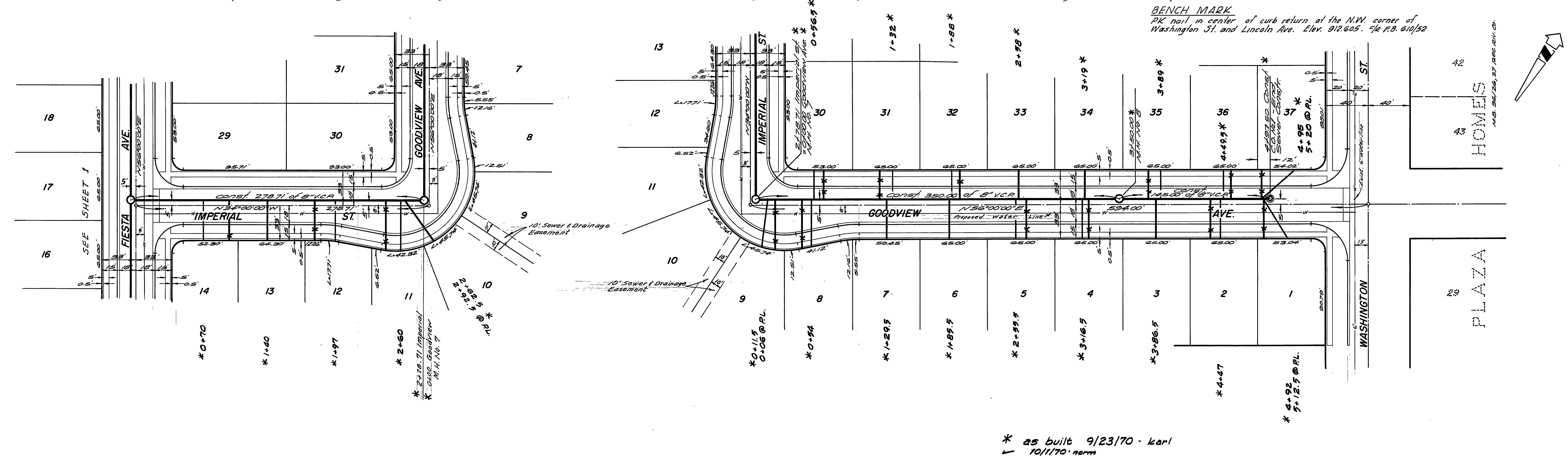
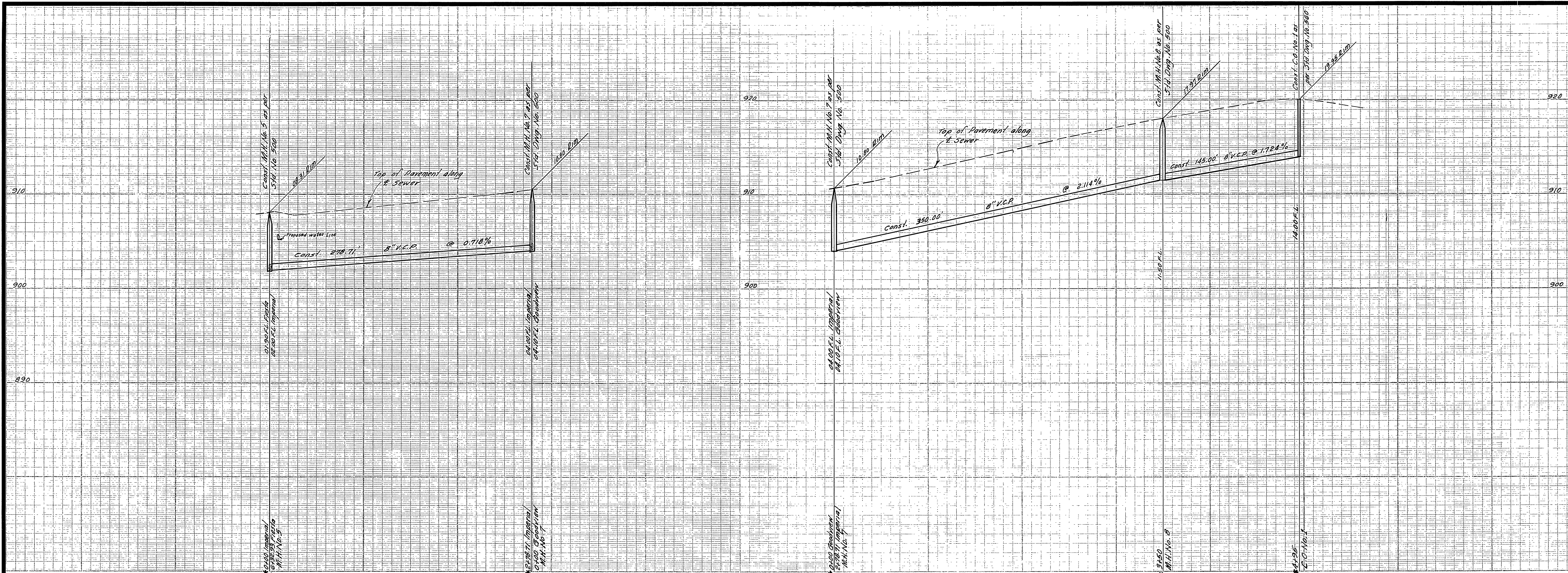
TRACT NO. 4041

ACCOUNT No. DRAWING NUMBER
5-789

SHEET 1 OF 3

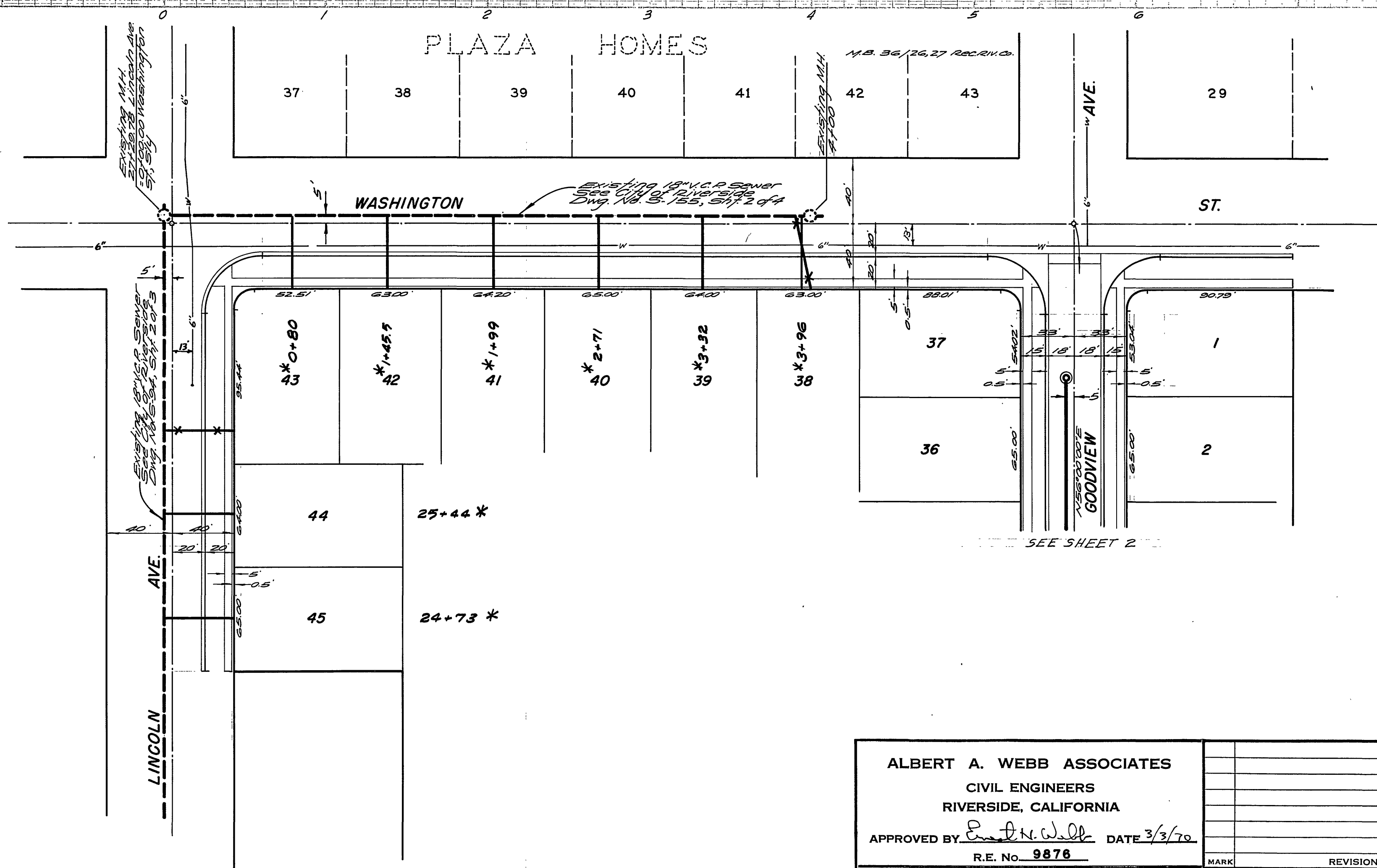
SCALE: HORIZ. 1" = 50' VERT. 1" = 5'

69-349-B



* as built 9/23/70 - karl
 10/1/70 - norm

| | | | | |
|---|---|--|--|---|
| ALBERT A. WEBB ASSOCIATES CIVIL ENGINEERS RIVERSIDE, CALIFORNIA APPROVED BY: <i>[Signature]</i> DATE 3/3/70 R.E. No. 9876 | CITY OF RIVERSIDE, CALIFORNIA PUBLIC WORKS DEPARTMENT APPROVED BY: <i>[Signature]</i> DATE 3/24 PRINCIPAL ENGINEER PARK DEPARTMENT TRAFFIC DIVISION CHIEF PUB. WKS. ENGR. | SEWER PLAN AND PROFILE IMPERIAL STREET AND GOODVIEW AVENUE TRACT NO. 40A1 | | ACCOUNT No. DRAWING NUMBER S-789 |
| | | SCALE: HORIZ. 1" = 50' VERT. 1" = 5' | | SHEET 2 OF 3 69-349-B |



BENCH MARK
 PK nail in center of curb return at the N.W. corner of
 Washington St. and Lincoln Ave. Elev. 912.605, 4/2 F.B. 6/10/52

* as built 9/23/70 - Karl
 10/11/70 - norm

| | | | | |
|---|--|--|--|---|
| ALBERT A. WEBB ASSOCIATES CIVIL ENGINEERS RIVERSIDE, CALIFORNIA APPROVED BY <i>E. N. Webb</i> DATE 3/3/70 R.E. No. 9878 | | CITY OF RIVERSIDE, CALIFORNIA PUBLIC WORKS DEPARTMENT APPROVED BY <i>[Signature]</i> DATE 6-4-70 DIRECTOR OF PUBLIC WORKS | | ACCOUNT No. DRAWING NUMBER 5-789 SHEET 3 OF 3 |
| W.O. 69-349 FOR RINCON DEV. | | DESIGNED BY <i>[Signature]</i> DRAWN BY <i>[Signature]</i> CHECKED BY <i>[Signature]</i> | | SCALE: HORIZ. 1" = 50' VERT 1" = 5' 69-349-B |