

NOTE: Sewer lateral elevations are shown at the water line crossings

BENCH MARK:
 151.2311 in center of NE curb
 151.2311 in center of 272 Street Ave
 C/L F.B. 0006 155, 704/41
 ELEV. = 759.29

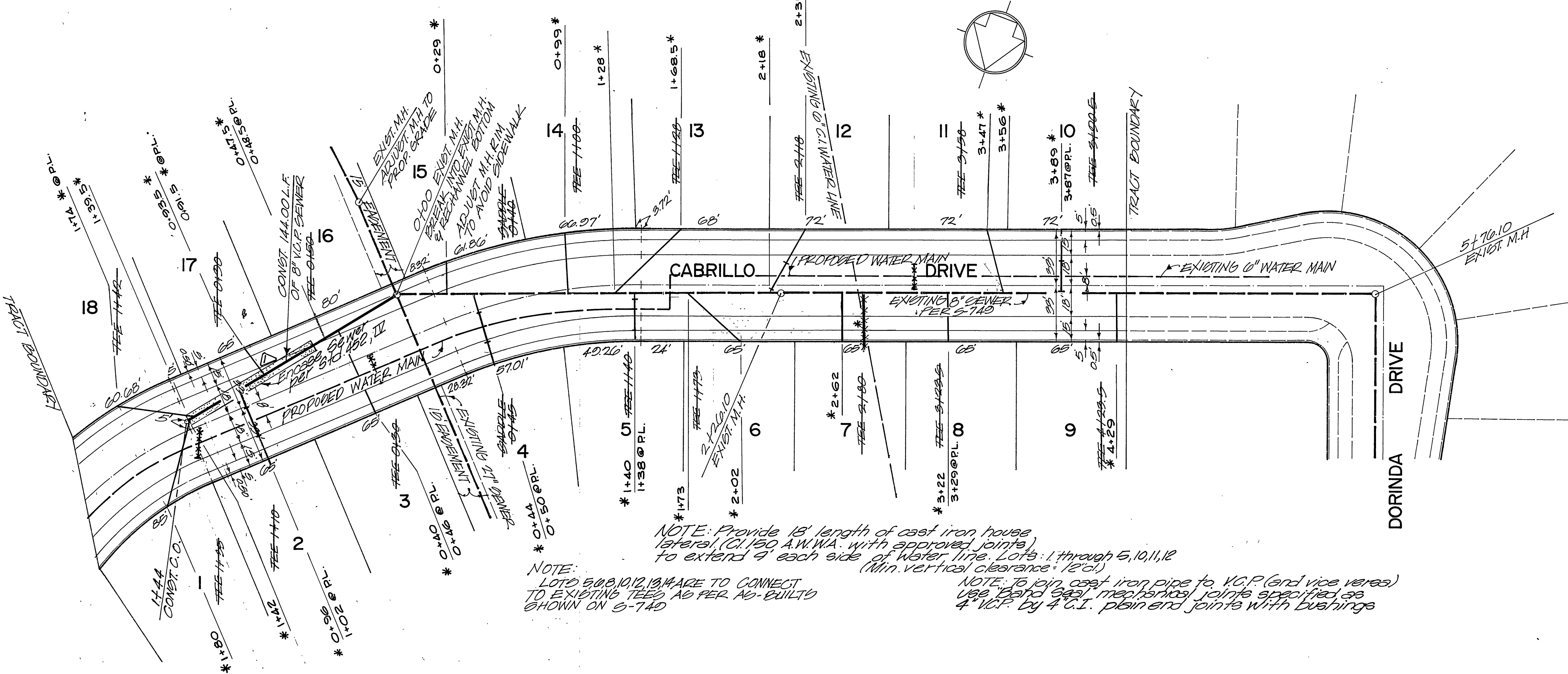
GENERAL NOTES:

- CONSTRUCTION SHALL BE IN ACCORDANCE WITH THE CITY OF RIVERSIDE, DEPT OF PUBLIC WORKS, STANDARD SPECIFICATIONS NO. 401 AND STANDARD DRAWINGS.
- IT SHALL BE THE RESPONSIBILITY OF THE CONTRACTOR TO CLEAR THE RIGHT OF WAY IN ACCORDANCE WITH THE PROVISIONS OF LAW AS IT AFFECTS EACH UTILITY, INCLUDING IRRIGATION LINES AND APPURTENANCES, AND AT NO COST TO THE CITY.
- JOINTS SHALL BE IN CONFORMANCE TO A.S.T.M. SPECIFICATION C-425-64, TYPE I OR II, OR TO A.S.T.M. SPECIFICATION C-504-60T, (BAND-SEAL), WITH CERTAIN EXCEPTIONS OR MODIFICATIONS ON FILE WITH THE CITY ENGINEER.
- LOCATION OF TEES AND LATERALS TO BE DETERMINED BY OWNER.
- ALL STUDS AND LATERALS TO BE CONSTRUCTED IN ACCORDANCE WITH STANDARD DRAWING NO. 502. STUDS SHALL BE PLUGGED AND CAPPED AND SHALL BE 2 FEET LONG.
- MAN HOLE FRAMES AND COVERS TO BE SET AT FINISHED STREET GRADE.
- LATERALS TO BE 1" AND EXTENDED TO PROPERTY LINE.
- PRIOR TO CONSTRUCTION OF SEWER, CONTRACTOR IS TO EXPOSE EXISTING SEWER AND CONTACT THE ENGINEER FOR VERIFICATION OF EXISTING ELEVATIONS.
- PIPE SHALL BE BEDDED PER CASE I, STANDARD DRAWING NO. 152, UNLESS OTHERWISE SPECIFIED ON PLANS.

NOTICE TO CONTRACTORS:

THE EXISTENCE AND LOCATION OF ANY UNDERGROUND UTILITY PIPES OR STRUCTURES SHOWN ON THESE PLANS ARE OBTAINED BY A SEARCH OF THE AVAILABLE RECORDS. TO THE BEST OF OUR KNOWLEDGE THERE ARE NO EXISTING UTILITIES EXCEPT AS SHOWN ON THE PLANS. THE CONTRACTOR IS REQUIRED TO TAKE DUE PRECAUTIONARY MEASURES TO PROTECT THE UTILITIES LINED SHOWN AND ANY OTHER LINES NOT OF RECORD OR NOT SHOWN ON THESE PLANS.

* AS BUILT KARL 6/1/70



NOTE: Provide 18' length of cast iron house lateral (C.I. 150 A.W.W.A. with approved joints) to extend 9' each side of water line. (Min. vertical clearance = 12'0")

NOTE: LOTS 5, 6, 8, 10, 12, 13 MAKE TO CONNECT TO EXISTING TEES AS PER AD-BUILT'S SHOWN ON 6-740

NOTE: To join cast iron pipe to V.C.P. (and vice versa) use 12" dia cast iron pipe with joints specified as 4" V.C.P. by 4" C.I. plain end joints with bushings

MAXWELL, BROWN & ASSOCIATES
 PLANNING · ENGINEERING · SURVEYING
 1771 NORTH D STREET · SAN BERNARDINO, CALIFORNIA

APPROVED BY: *Philip E. Brown* 4-1-70
 CHIEF PUBLIC UTILITIES ENG. - WATER

Approved By: *Philip E. Brown* Date: 1/22/70
 Philip E. Brown, RCE 18,679

JOB NO. 69-11-3 F.B. 227 DRAWN BY: *J.M.* CHECKED BY: *J.M.*

MARK	REVISIONS	APPR.	DATE
1	Add 8" Sewer Encasement	<i>J.M.</i>	5/15/70

CITY OF RIVERSIDE, CALIFORNIA
 DEPARTMENT OF PUBLIC WORKS

APPROVED BY: *Philip E. Brown* 4/1/70
 OFFICE ENGINEER

APPROVED BY: *Maxwell Brown*
 DIRECTOR OF PUBLIC WORKS

DATE: 4-22-70

SEWER PLAN & PROFILE

CABRILLO DRIVE
 TRACT NO. 4023

PROJECT NO. **S-791**

SHEET 1 OF 2

HORIZ. SCALE: 1" = 40' VERT. SCALE: 1" = 4'

FILE NO.

