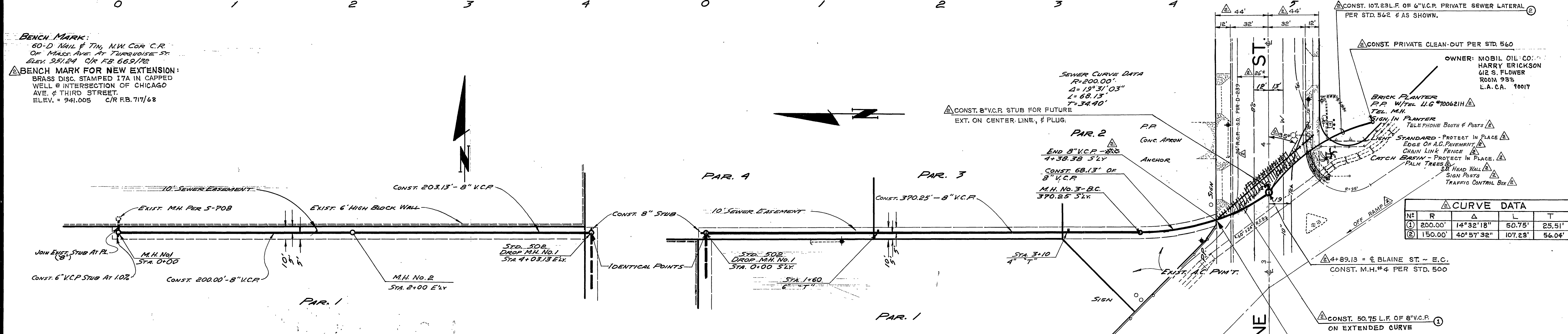


BENCH MARK:
 60-D NAIL & TIN, NW COR. C.R. OF MASS. AVE. AT TURQUOISE ST. ELEV. 951.24 C/R FB 665/72
BENCH MARK FOR NEW EXTENSION:
 BRASS DISC, STAMPED I7A IN CAPPED WELL @ INTERSECTION OF CHICAGO AVE. & THIRD STREET. ELEV. = 941.005 C/R FB. 711/68

NOTE: ALL IMPROVEMENTS REMOVED WILL BE REPLACED WITH NEW IMPROVEMENTS AS DIRECTED BY INSPECTOR.



GENERAL NOTES:

- All manholes to be Riverside City Standard No. 500 unless otherwise noted on plan.
- All construction shall be in accordance with the Standards and Specifications No. 461 AND STANDARD DRAWINGS of the City of Riverside Department of Public Works. Pipe shall be embedded per Case 1 Standard Drawing No. 452, unless otherwise specified on plans.
- It shall be the responsibility of the Contractor to clear the right-of-way in accordance with the provisions of law as it affects each utility including irrigation lines and appurtenances at no cost to the City of Riverside.
- Joints shall be in conformance to A.S.T.M. Specifications C-425-64 Type I or III or to A.S.T.M. Specifications C-594-66T (B and Seal) with certain exceptions or modifications on file with the City Engineer.
- Location of all tees to be located in field. Note approximate stationing on plans. Avoid conflict with proposed and/or existing facilities.
- All stubs to be constructed in accordance with Standard Drawing No. 502.
- All stubs at manholes shall be 2' long and plugged.

- The private engineer signing these plans is responsible for the accuracy and acceptability of the work hereon. In the event of discrepancies arising during construction the private engineer signing the plans shall be responsible for determining an acceptable solution and revising the plans for approval by the City.
- Construction shall be in accordance with the City of Riverside Department of Public Works, standard drawings, and the standard specifications for public works construction, 1982 Edition.
- Contractor is to verify existing sewer elevation prior to construction.
- The sewer contractor shall adjust manholes to final grade after paving is completed.
- No finished floor elevation shall be less than 4' above the sewer flow line at point of connection without having a proper backwater valve installed in the lateral.
- A plug shall be installed and will remain in place where the new sewer connects with the existing sewer until the new sewer is accepted by the City.
- Any traffic control striping obliterated and/or badly worn during construction shall be restored by the contractor within five days after notification from the City Inspectors.
- No construction permit issued by the Public Works Department involving excavation for underground facilities will be valid unless the applicant has been provided an inquiry identification number by USA.

Underground Service Alert Call: TOLL FREE 1-800 422-4133 TWO WORKING DAYS BEFORE YOU DIG	SOUTH CALIF. GAS CO. APPROVED BY: <i>Daniel C. Pallas</i> 5-23-83 DATE	PACIFIC TELEPHONE APPROVED BY: <i>C.A. Van Dine</i> 9-20-83 DATE	CITY OF RIVERSIDE PUBLIC UTILITIES DEPT. DOMESTIC SYSTEM APPROVED BY: <i>E.L. Johnson</i> 8-25-83 DATE CHIEF UTILITIES ENGINEER, WATER	J. F. DAVIDSON ASSOCIATES CIVIL ENGINEERS - SURVEYORS - PLANNERS RIVERSIDE, CALIFORNIA APPROVED BY: <i>Robert S. Kopp</i> DATE 3-16-70 R.E. No. 136391 W.O. 2482 FOR <i>SMITH-JONES</i> F.B. 1029	CITY OF RIVERSIDE, CALIFORNIA DEPARTMENT OF PUBLIC WORKS APPROVED BY: <i>James A. ...</i> DATE 4-13-70 ASSISTANT CITY ENG.	SEWER PLAN & PROFILE EASEMENT NORTHERLY OF BLAINE WESTERLY OF IOWA R/S 1080 MAIN EXTENSION FOR 1360 BLAINE ST. HORIZ. SCALE: 1" = 40' VERT. SCALE: 1" = 4' INDEXED R.R.	PROJECT NO. S-792 SHEET 1 OF 1 FILE NO. 3384
---	--	--	--	---	---	--	--