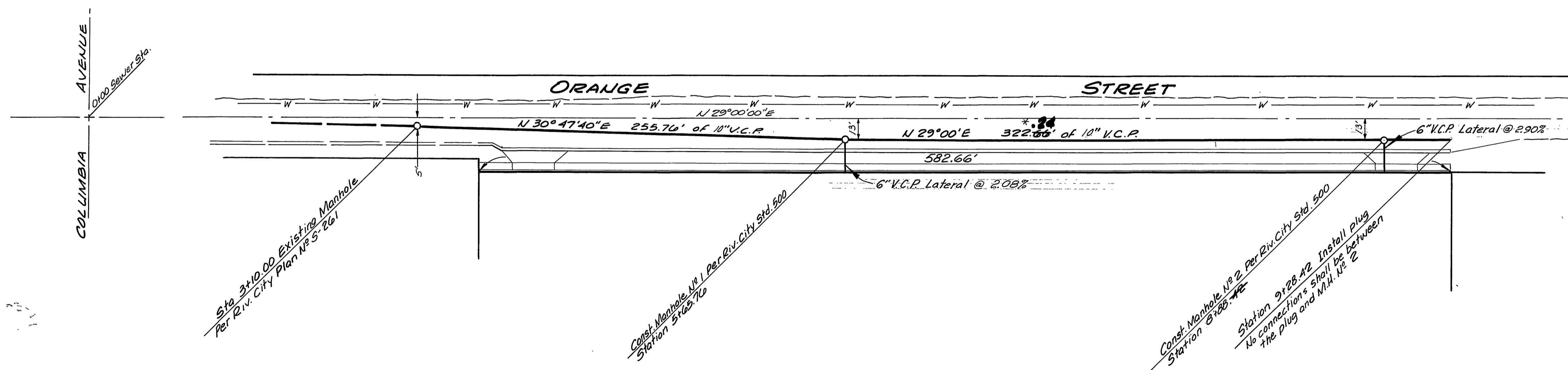
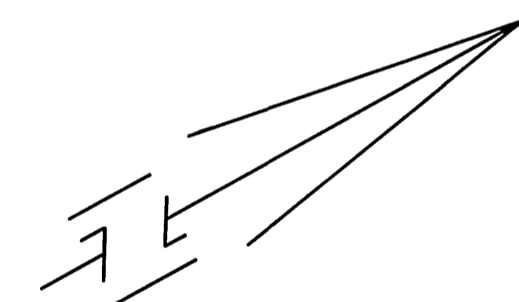


NOTE: No Lateral Connections allowed between Sta. 8+38.42 and Sta. 9+28.42 until a C.O. is constructed at end of Line or Line is extended to a C.O. or M.H.



- GENERAL NOTES**
- All manholes to be Riverside City Standard No. 500, unless otherwise noted on Plan. Maximum Vertical Spacing of Steps in all manholes shall be 12".
  - All construction shall be in accordance with the Standards and Specifications No. 461 of the City of Riverside, Department of Public Works. Pipe shall be bedded per Case 1, Standard Drawing No. 452, unless otherwise specified on plans.
  - It shall be the responsibility of the Contractor to clear the right of way in accordance with the provisions of law as it affects each Utility including irrigation lines and appurtenances and at no cost to the City of Riverside.
  - Joints shall be in conformance to A.S.T.M. Specifications C-425-64, Type I or III or to A.S.T.M. C-594-66T (Band Seal) with certain exceptions or modifications on file with the City Engineer.
  - All stubs to be constructed in accordance with Standard Drawing No. 562.

**BENCH MARK:**  
PK Nail in curb return S.W. Corner of Columbia Avenue and Orange Street. (City of Riverside, F.B. 779/40) Elev. 827.37

\* as built 2.3.71 RSPM

<b>J. F. DAVIDSON ASSOCIATES</b> CIVIL ENGINEERS - SURVEYORS - PLANNERS RIVERSIDE, CALIFORNIA APPROVED BY <i>Robert S. Kupper</i> DATE 5-14-70 R.E. No. 13694 W.O. 2583 FOR Henschel & Spruiell F.B. 1005	MARK REVISIONS APPR. DATE DESIGNED BY <i>W.A.</i> DRAWN BY <i>MMC</i> CHECKED BY	<b>CITY OF RIVERSIDE, CALIFORNIA</b> <b>DEPARTMENT OF PUBLIC WORKS</b>		<b>SEWER PLAN &amp; PROFILE</b> <b>ORANGE STREET</b> 30+00 TO 928.42' NELY OF COLUMBIA AVENUE C-29-690	INDEXED BLD PROJECT NO.
		APPROVED BY <i>[Signature]</i> DATE 6-18-70 ASSISTANT CITY ENG.	APPROVED BY <i>[Signature]</i> DIRECTOR OF PUBLIC WORKS		SHEET 1 OF 1 FILE NO. 3389