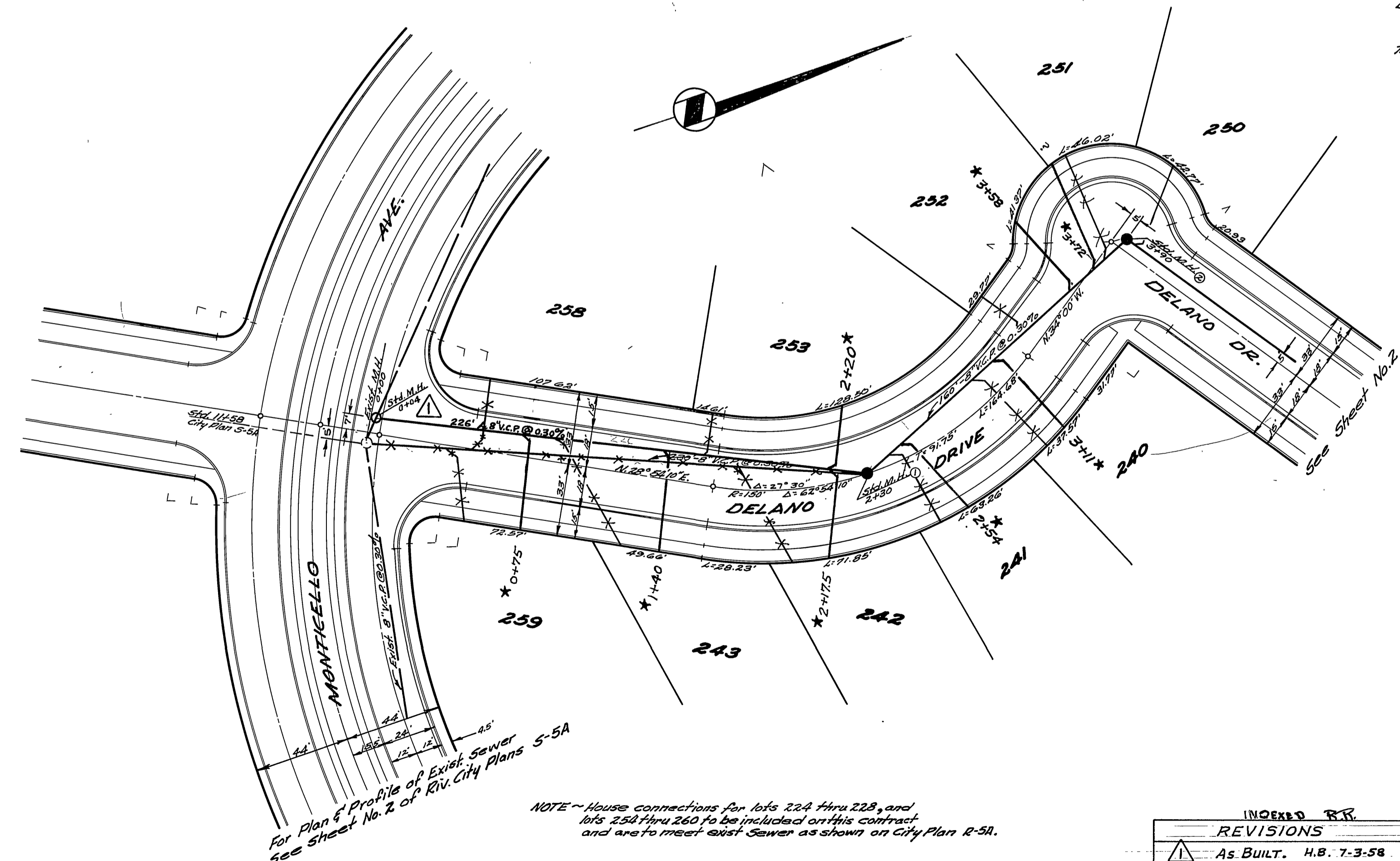
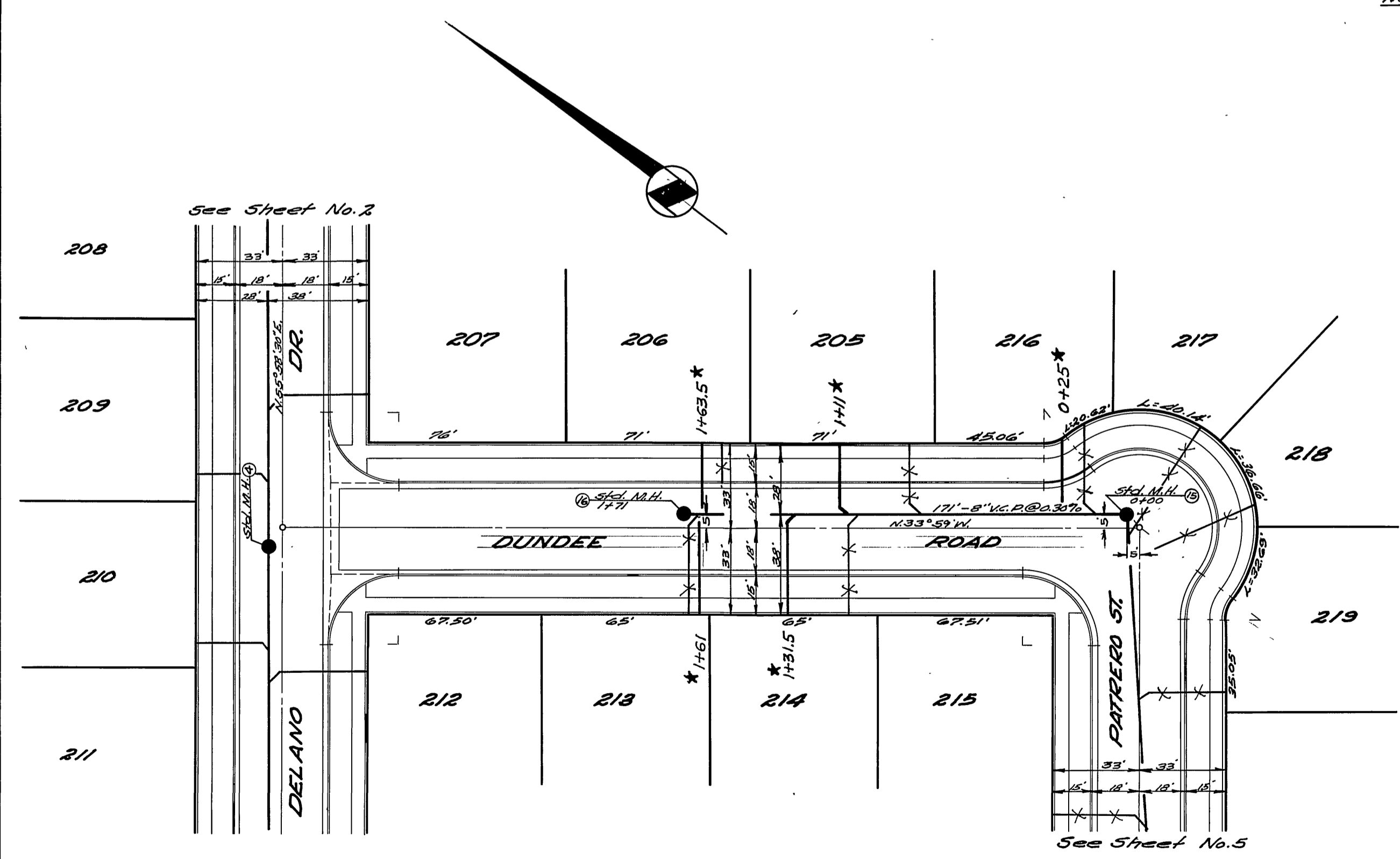


NOTE - Sewer laterals to be located in the field.



BENCH MARK
 B.M. - 3/4" Iron Pipe, s.p.a. 7+02.20 MONTICELLO AVE.,
 44' Ely. of E. Elev. 747.99
 T.B.M. - Tack in lead, W.P. concrete header of Storm
 Drain at MONROE St. crossing, 8' Sly. of W.P.
 Fract. boundary Unit No. 3 Elev. 753.77

NOTE - House connections for lots 224 thru 228, and
 lots 250 thru 260 to be included on this contract
 and are to meet exist Sewer as shown on City Plan R-5A.
 See Sheet No. 2 of Riv. City Plans 5-5A

J.F. DAVIDSON - CIVIL ENGINEER
 R.E. No. 862
 RIVERSIDE, CALIFORNIA
 APPROVED BY *Robert Kupper* DATE 4-9-57

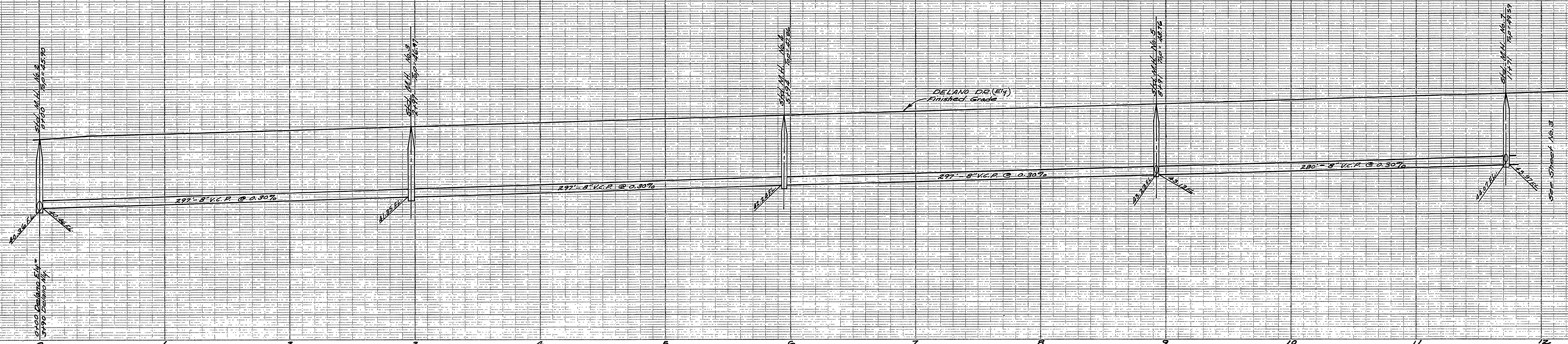
CITY OF RIVERSIDE, CALIFORNIA
 DEPARTMENT OF PUBLIC WORKS
 SEWER PLAN & PROFILE
 DUNDEE RD. & DELANO DR.

VILLA d'ESTE UNIT No. 3
 HORIZ. SCALE 1" = 40' VERT. SCALE 1" = 4'

INDEXED REVISIONS	
△	As BUILT. H.B. 7-3-58
*	As Built sewer laterals, 2-18-59, J.F.D.

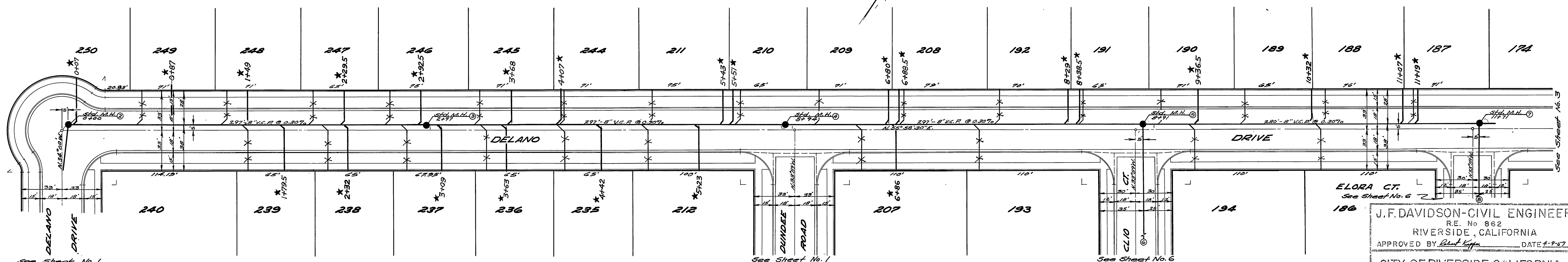
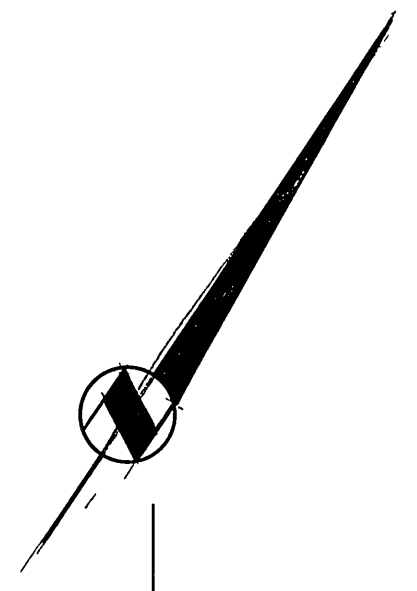
APPROVED BY *J.F. Davidson*
 Director of Public Works
 NO. S-80
 DATE April 9, 1958 SHEET 1 OF 7

Elev. 750'



NOTE - Sewer laterals to be located in the field.

BENCH MARK
 B.M. - 3/4" Iron Pipe sta. 7402.20 MONTICELLO AVE. 44' Ely. of center line. Elev. 747.99'
 T.B.M. - Tack in lead, Wly concrete header of storm drain at MARGOS ST. crossing 8' Wly. of Wly. Tract. Boundary Unit No. 3. Elev. 753.77'



See Sheet No. 1

See Sheet No. 1

See Sheet No. 6

See Sheet No. 5

J.F. DAVIDSON - CIVIL ENGINEER
 R.E. No. 862
 RIVERSIDE, CALIFORNIA
 APPROVED BY *Paul Kipp* DATE 4-9-57

CITY OF RIVERSIDE, CALIFORNIA
 DEPARTMENT OF PUBLIC WORKS

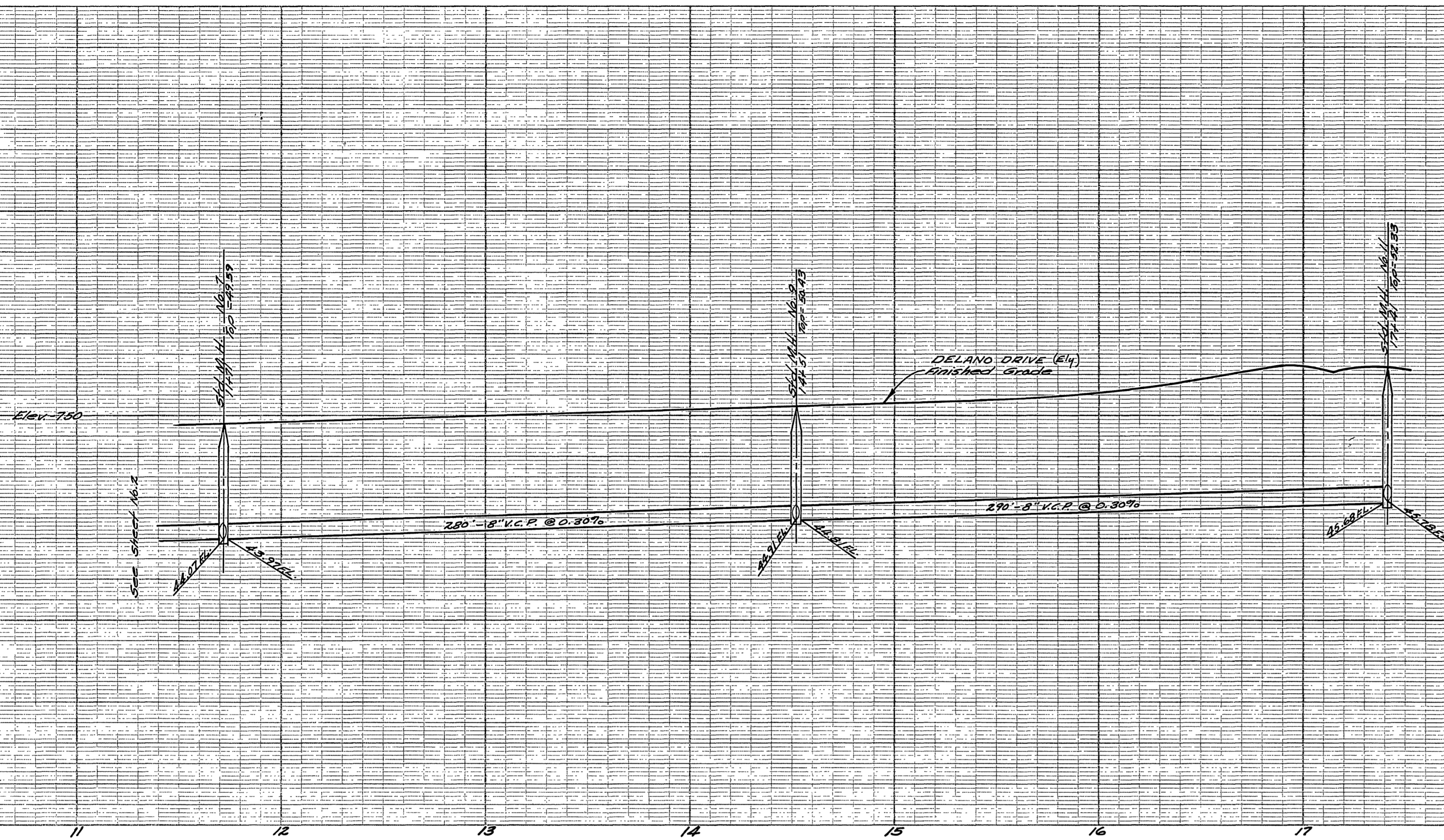
SEWER PLAN & PROFILE
 DELANO DRIVE

VILLA D'ESTE UNIT No. 3
 HORIZ. SCALE 1"=40' VERT. SCALE 1"=4'

APPROVED BY *J. Davidson*
 Director of Public Works
 DATE April 9, 1958

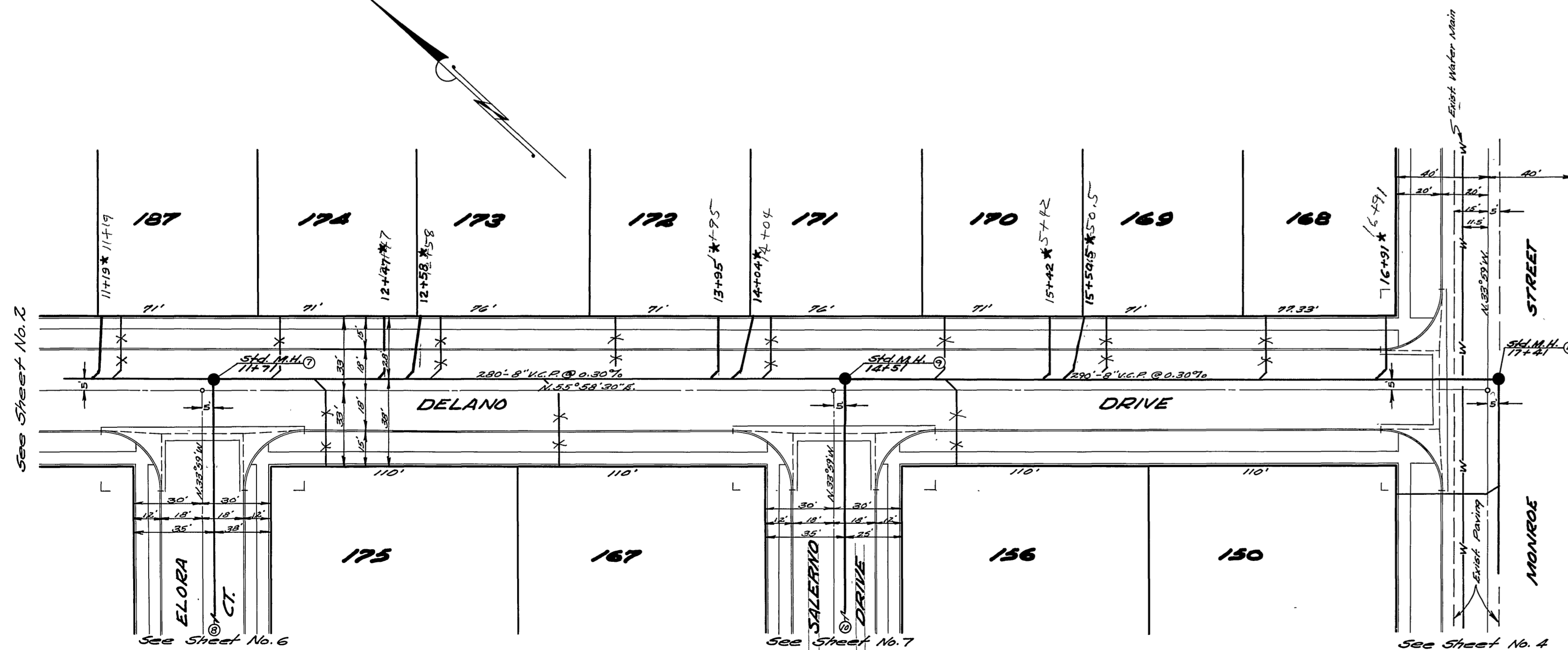
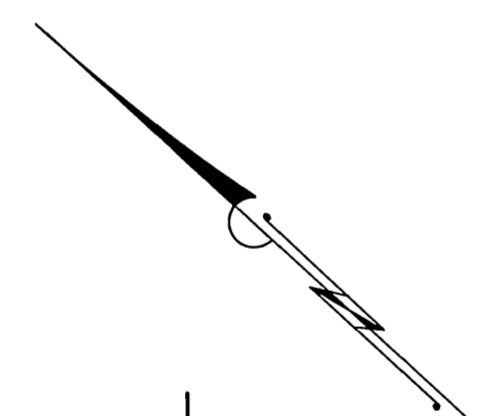
NO. S-80
 SHEET 2 OF 7

*As Built sewer laterals, 2-18-59, H. Ball



NOTE: Sewer laterals to be located in the field

BENCH MARK
 B.M. - 3/4" Iron Pipe, sta. 7+02.20 MONTECELLO AVE., 44 Ely.
 of center line Elev. 747.99'
 T.I.B.M. - Tack in lead, Wly. concrete header of Storm Drain
 at MONROE St. crossing, 5' Sly. of My Tract Boundary
 Unit No. 3. Elev. 753.77'

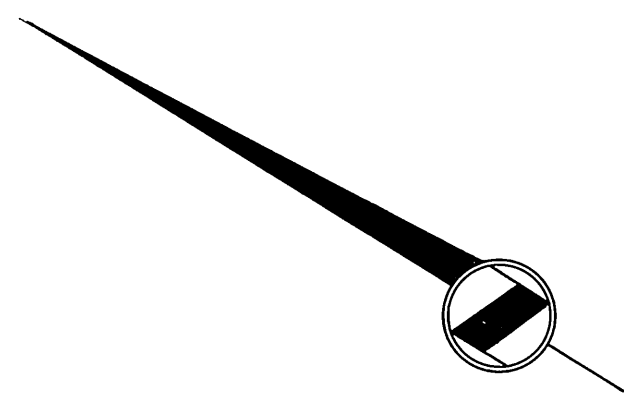
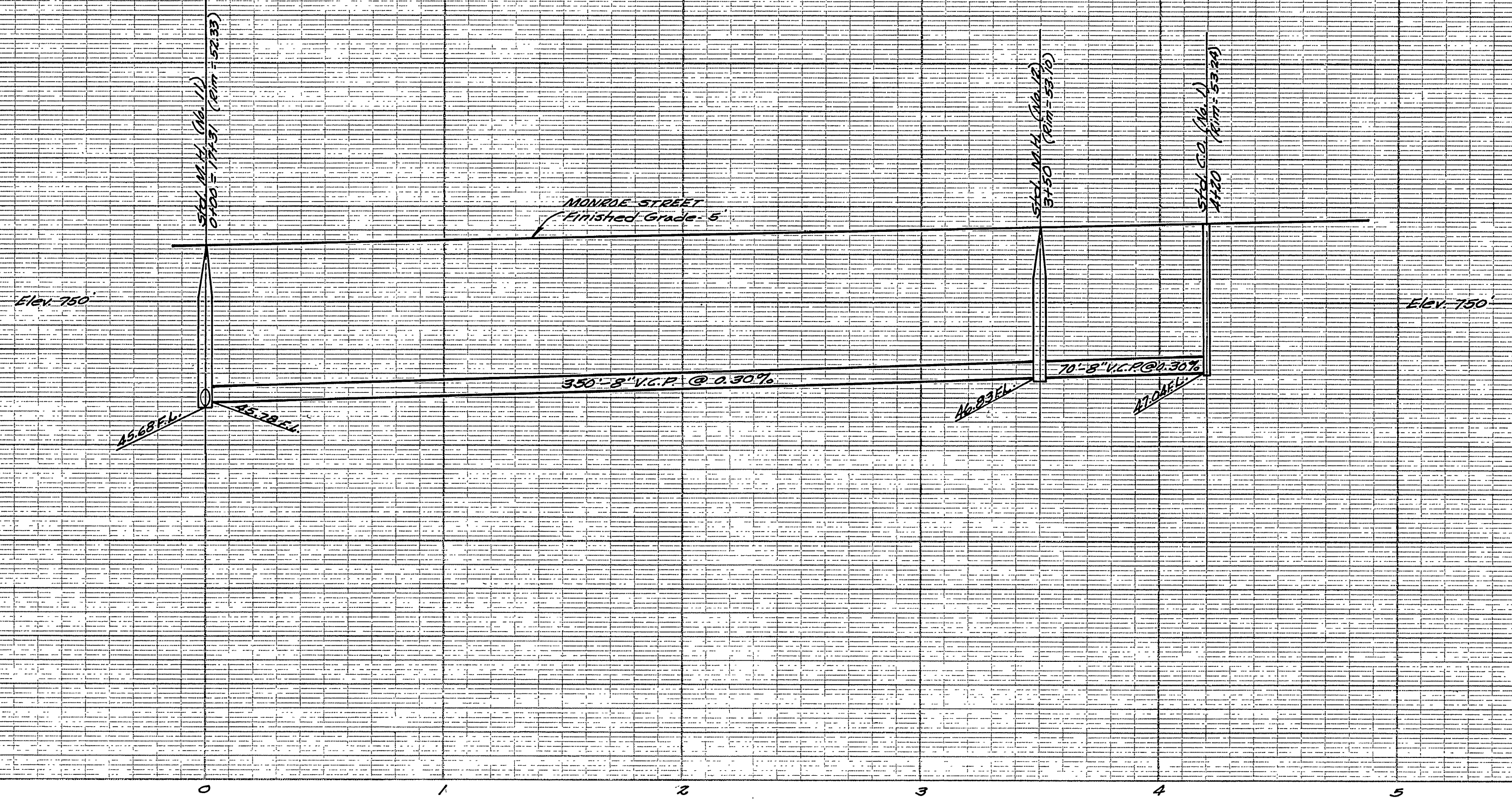


J.F. DAVIDSON - CIVIL ENGINEER
 R.F. No. 892
 RIVERSIDE, CALIFORNIA
 APPROVED BY *Robert Kipp* DATE 4-1-57
 CITY OF RIVERSIDE, CALIFORNIA
 DEPARTMENT OF PUBLIC WORKS
 SEWER PLAN & PROFILE
 DELANO DRIVE

VILLA D'ESTE UNIT No. 3
 HORIZ. SCALE 1"=40' VERT. SCALE 1"=4'

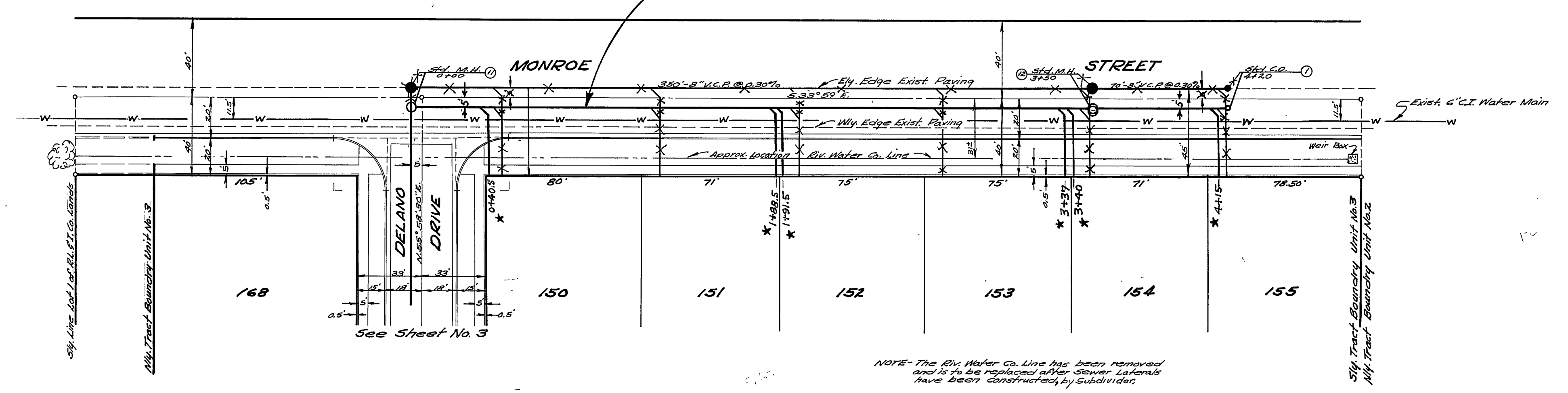
APPROVED BY *Domatich*
 Director of Public Works
 NO. S-80
 DATE *Apr 29 1957* SHEET 3 OF 7

* = "As Built" sewer laterals, 2-19-59, H. Ball



NOTE - Sewer laterals to be located in the field.

NOTE: Sewer constructed 5 ft. West of C.



BENCH MARK
T.B.M. - Tack in lead in conc. header 5' sly of nly tract boundary, wly side Monroe St. Elevation 753.77

NOTE - The Riv. Water Co. Line has been removed and is to be replaced after sewer laterals have been constructed by subdividers

J.F. DAVIDSON - CIVIL ENGINEER
R.E. No 862
RIVERSIDE, CALIFORNIA
APPROVED *[Signature]* DATE 3-27-77

CITY OF RIVERSIDE, CALIFORNIA
DEPARTMENT OF PUBLIC WORKS

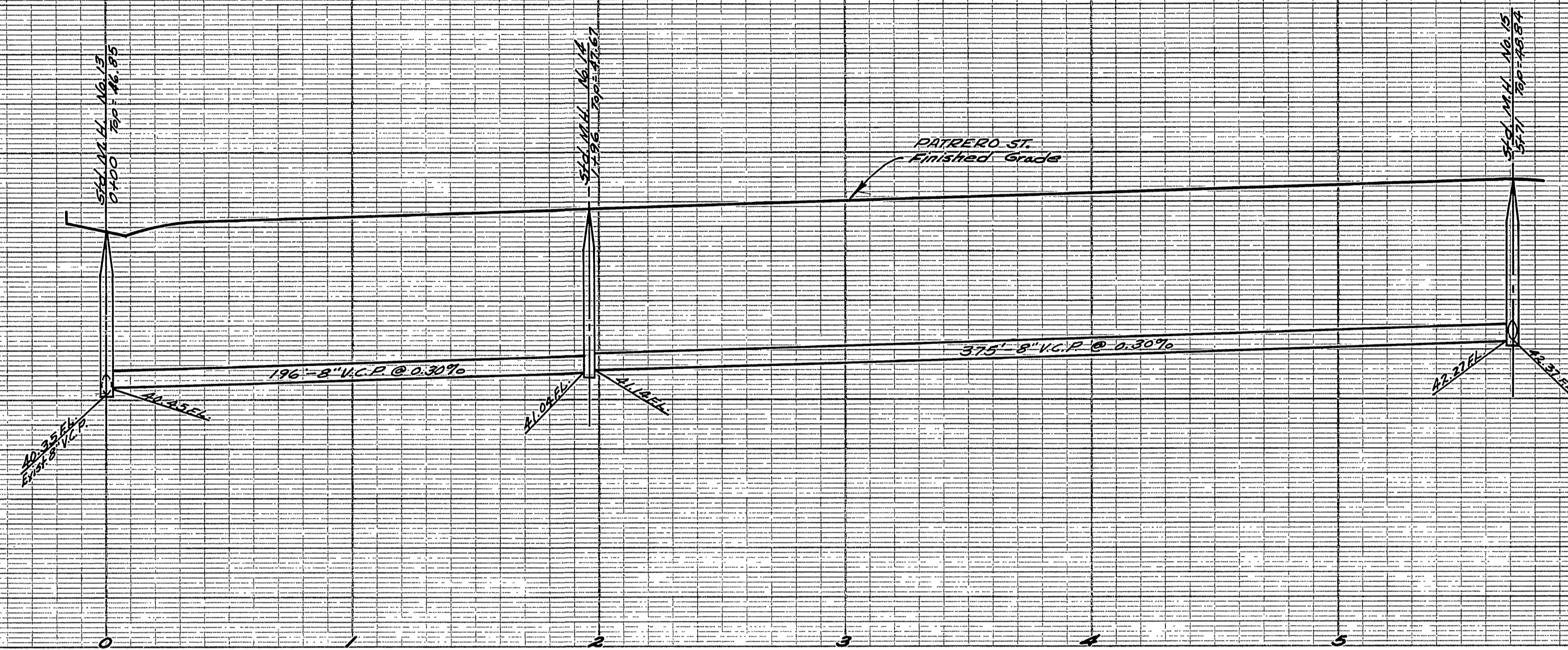
SEWER PLAN & PROFILE
MONROE STREET

VILLA d'ESTE No. 3
HORIZ. SCALE 1"=40' VERT. SCALE 1"=4'

APPROVED BY *[Signature]*
Director of Public Works
NO. S-80
DATE April 5, 1977 SHEET 4 OF 7

REVISIONS		
MARK	DATE BY	DESCRIPTION
△	4-14-58 H.B.A.	As Built Wly of C.
*	2-18-59	LATERALS

ELEV. 750

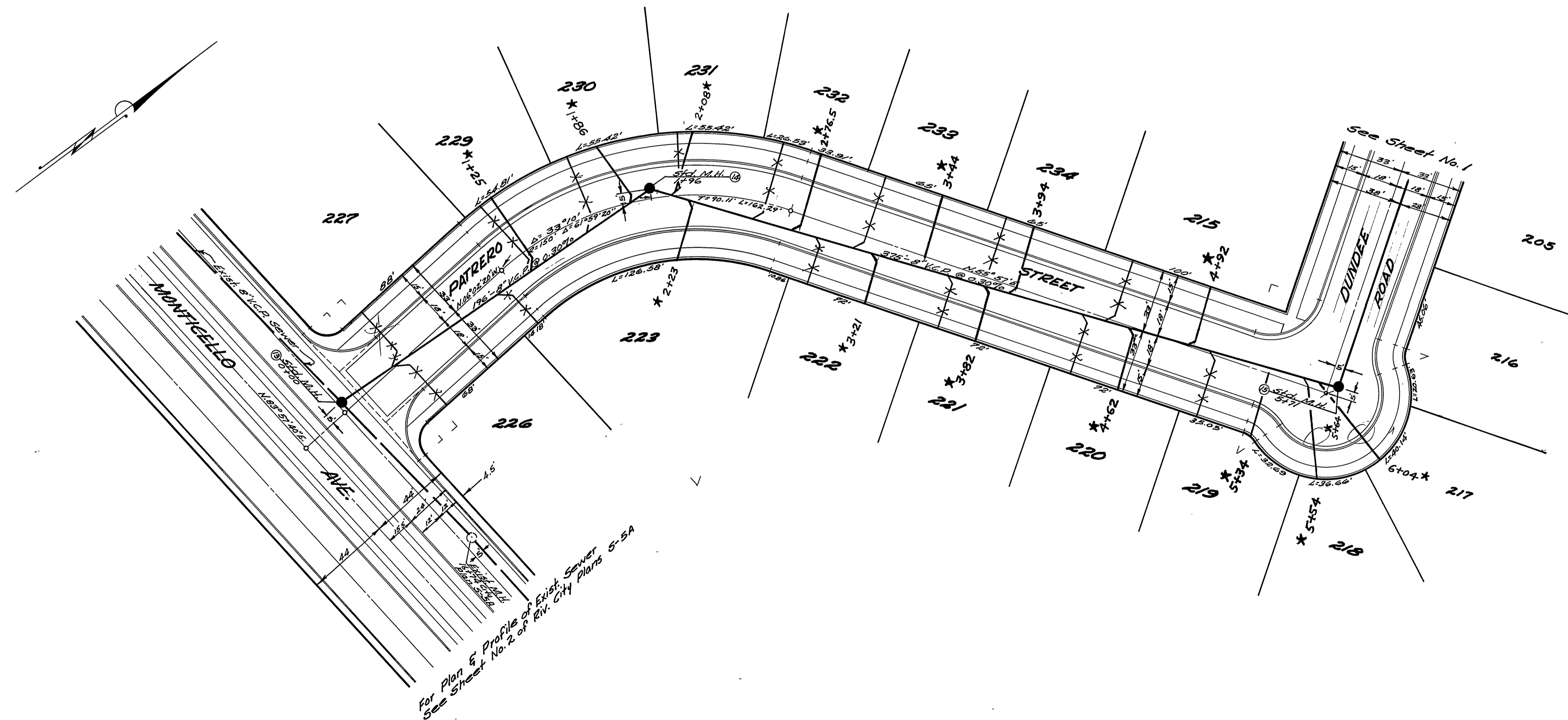


NOTE- Sewer laterals to be located in the field.

BENCH MARK

B.M. - 3/4" Iron Pipe, 5/4, 7+02.20 MONTECELLO AVE., 44'
Ety. of center line
Elev. 747.99'

T.B.M. - Tack in lead, Wly concrete header of Storm Drain
at MONROE at crossing, 8' 5/4 of Nly Tract Boundary
Unit No. 3.
Elev. 753.77'



For Plan & Profile of Exist. Sewer
See Sheet No. 2 of Div. City Plans 5-5A

J.F. DAVIDSON-CIVIL ENGINEER
R.E. No. 862
RIVERSIDE, CALIFORNIA
APPROVED BY *R. J. ...* DATE 4-1-57

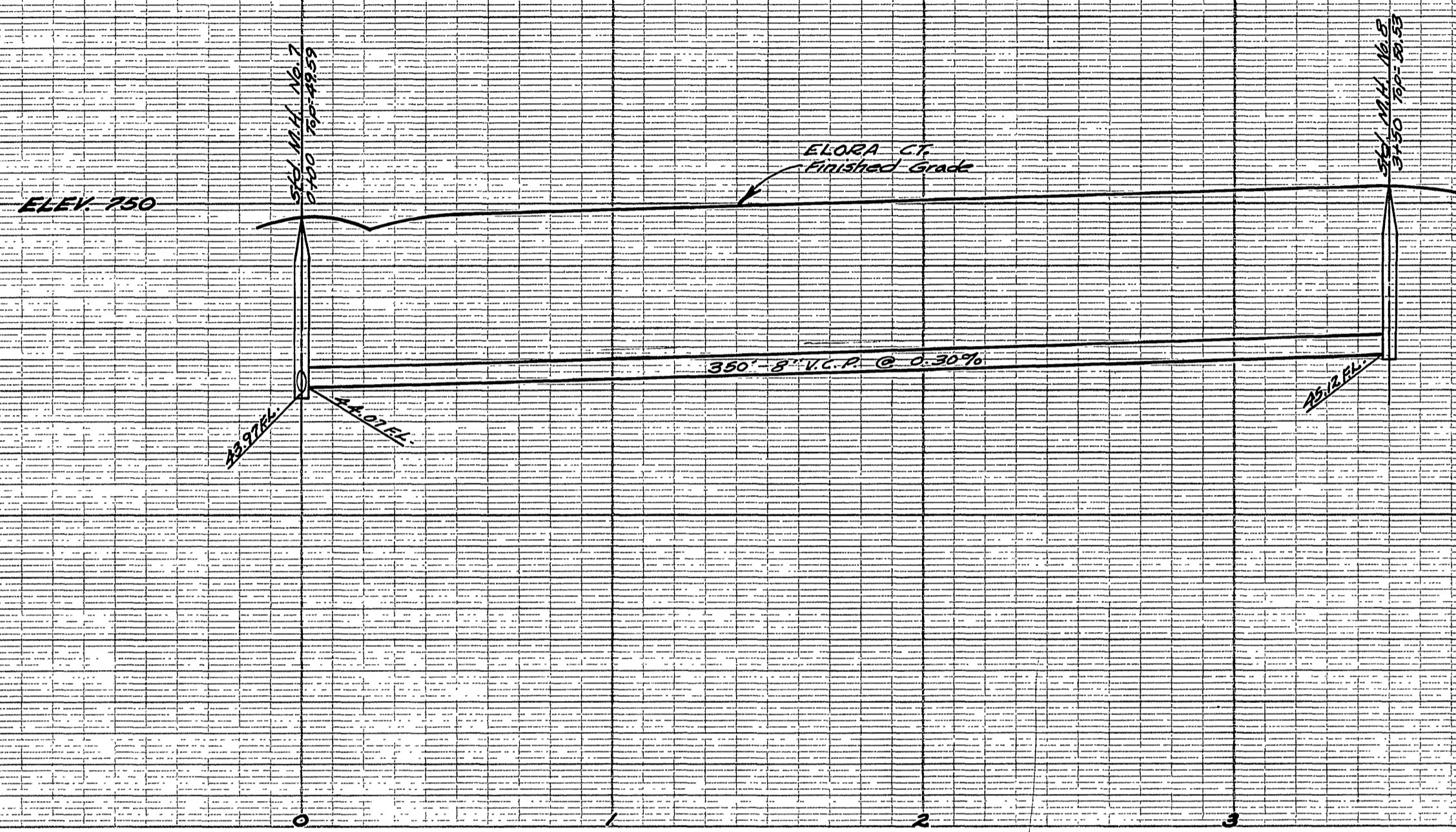
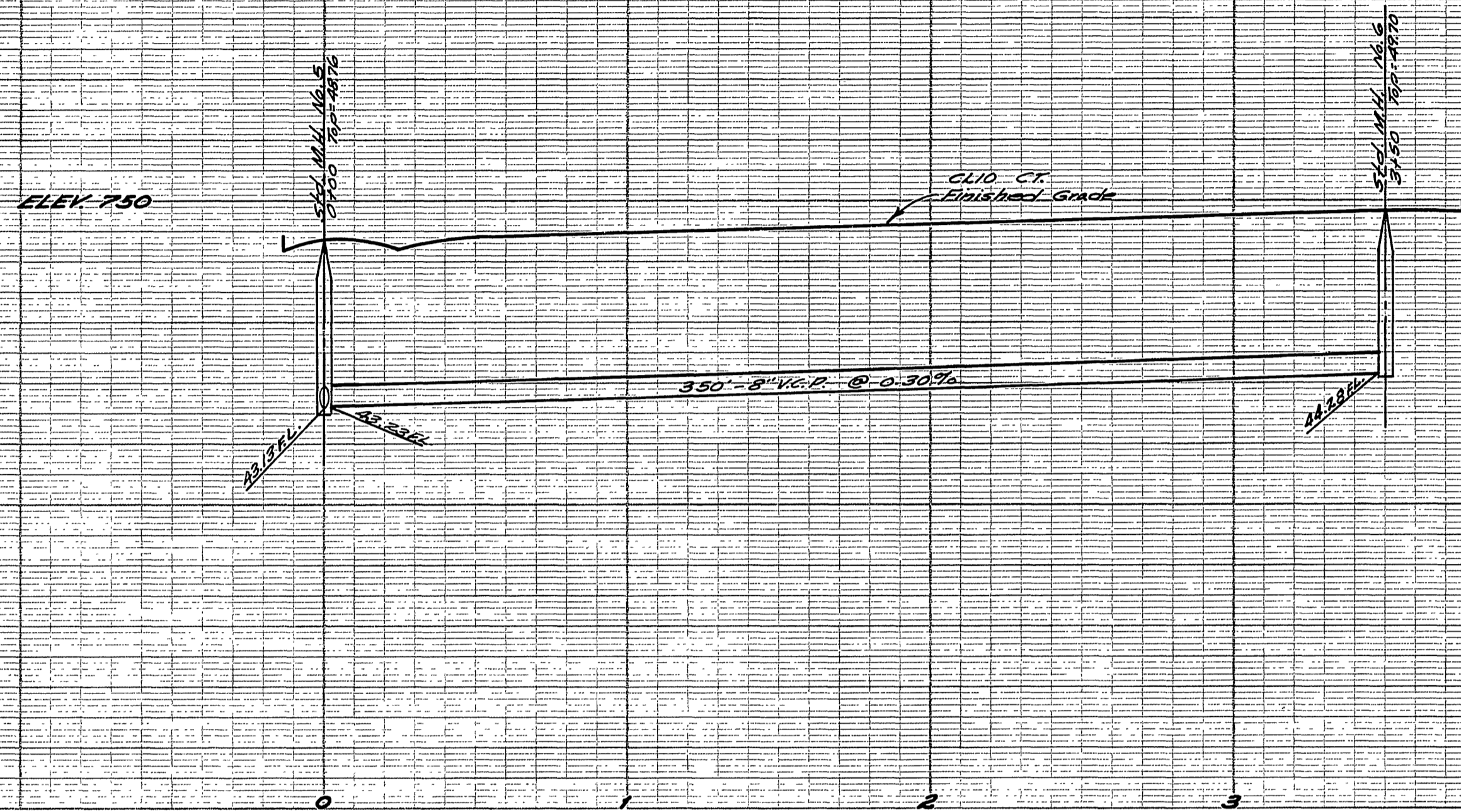
CITY OF RIVERSIDE, CALIFORNIA
DEPARTMENT OF PUBLIC WORKS

SEWER PLAN & PROFILE
PATRERO STREET

VILLA d'ESTE UNIT No. 3
HORIZ. SCALE 1"=40' VERT. SCALE 1"=4'

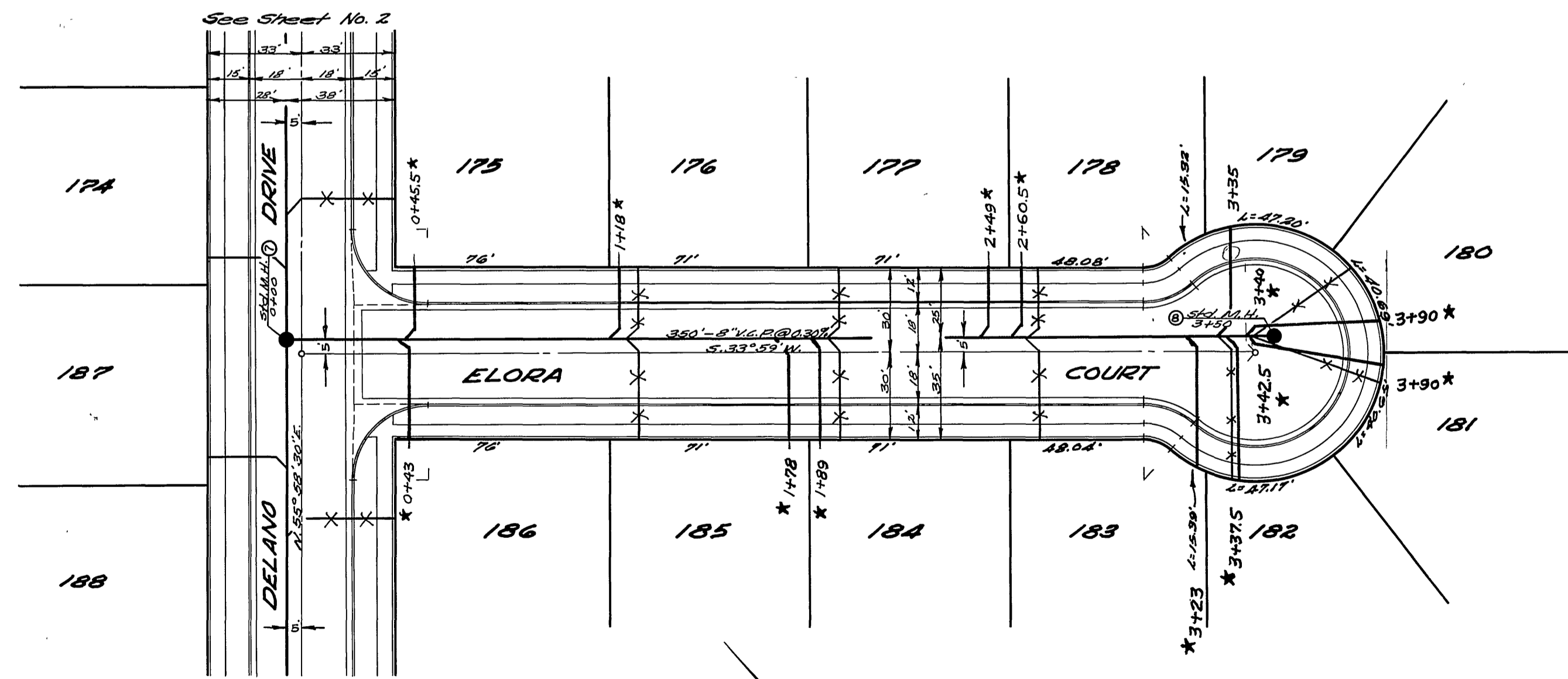
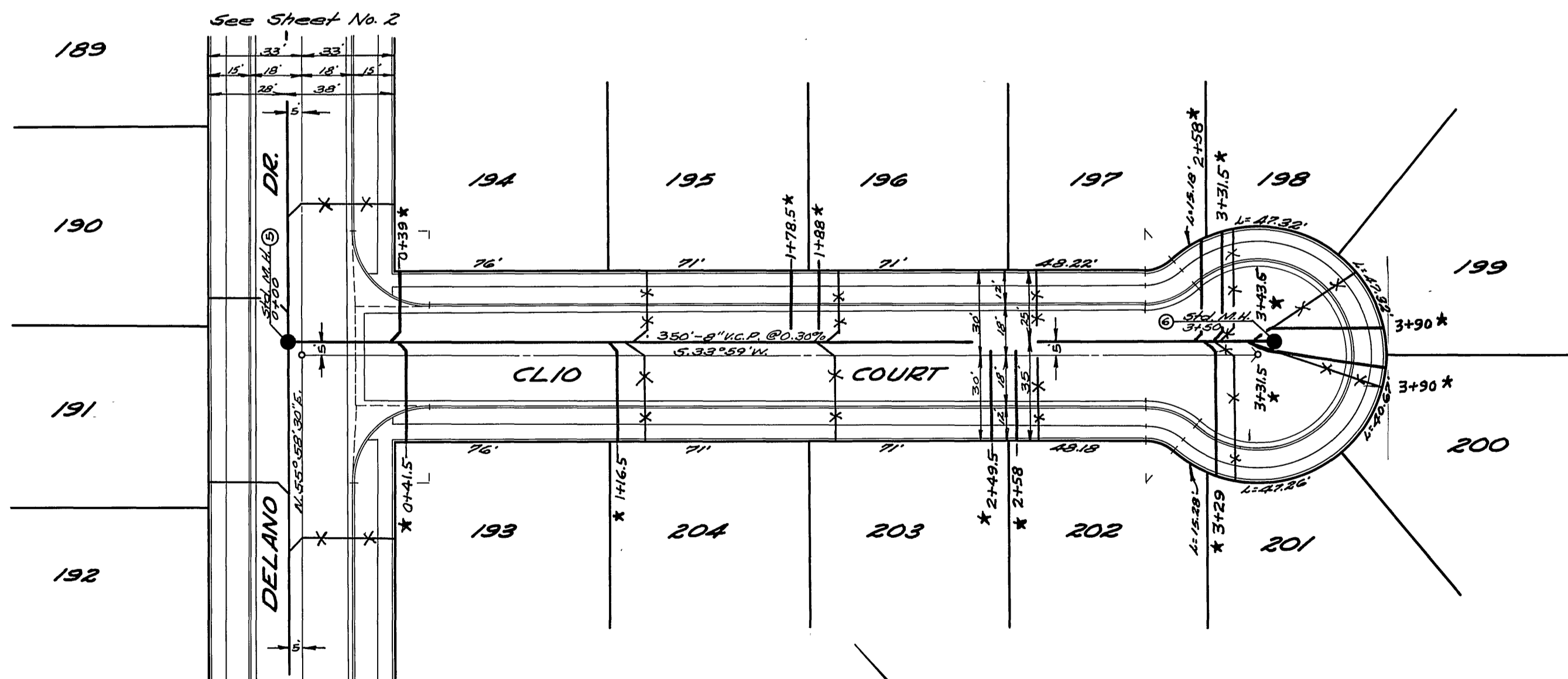
APPROVED BY *...*
Director of Public Works
DATE *April 29, 1958*
NO. S-80
SHEET 5 OF 7

* = "As Built" sewer laterals, 2-18-59, 4, Ball



NOTE - Sewer laterals to be located in the field.

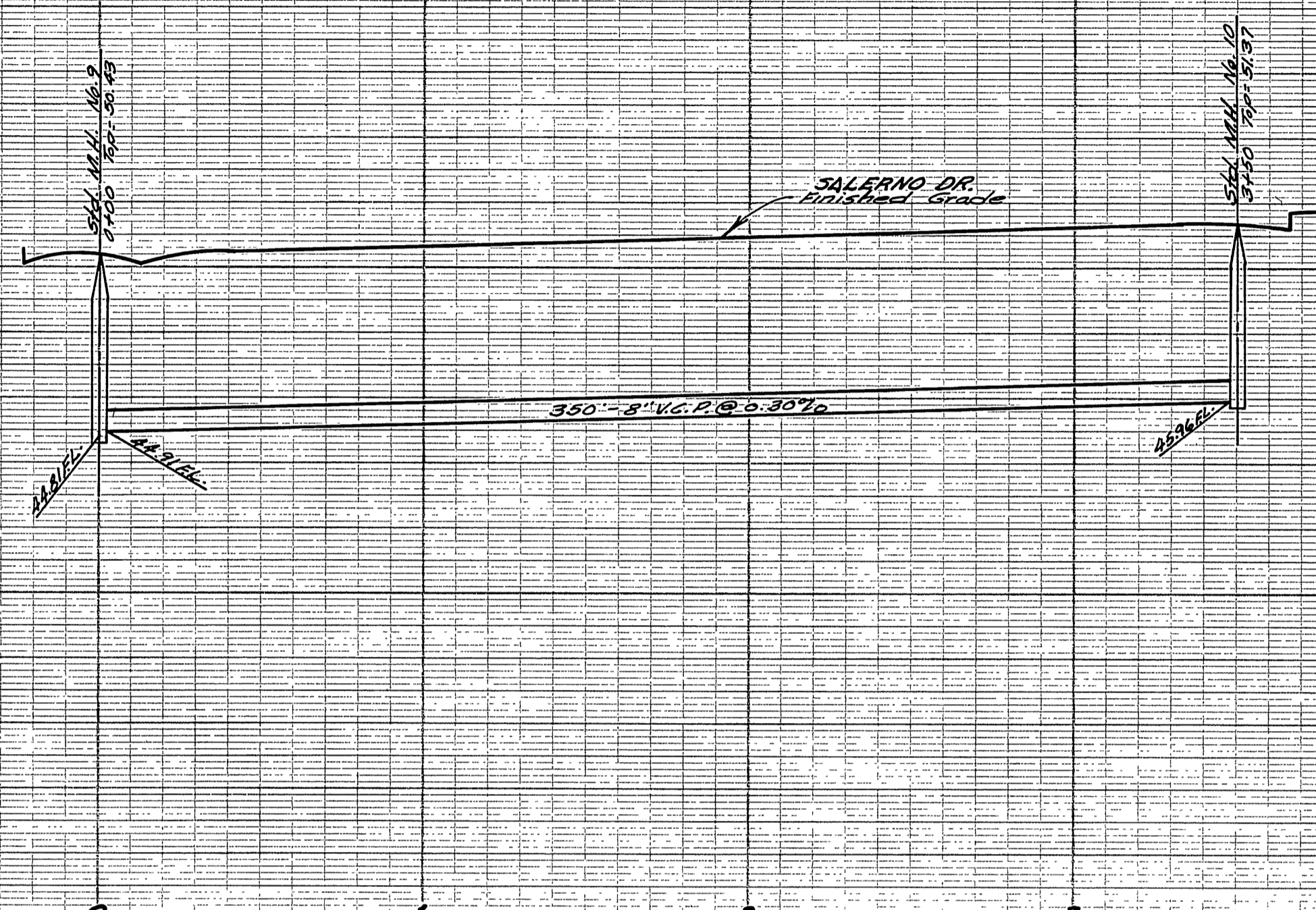
BENCH MARK
 B.M. - 3/4" Iron Pipe, sta. 7+02.22 MONTICELLO AVE., 44' Ely. of center line. Elev. 747.99'
 T.B.M. - Rock in lead, W/4 concrete header of Storm Drain at MONTICELLO St. crossing, 5' S/4 of N/4 Tract Boundary Unit No. 3. Elev. 753.77'



J.F. DAVIDSON - CIVIL ENGINEER
 R.E. No. 962
 RIVERSIDE, CALIFORNIA
 APPROVED BY *Paul Kym* DATE 4-1-57
 CITY OF RIVERSIDE, CALIFORNIA
 DEPARTMENT OF PUBLIC WORKS
 SEWER PLAN & PROFILE
 CLIO CT. & ELORA CT.
 VILLA d' ESTE UNIT No. 3
 HORIZ. SCALE 1"=40' VERT. SCALE 1"=4'
 APPROVED BY *David M. ...*
 Director of Public Works
 DATE April 19, 1958 NO. S-80
 SHEET 6 OF 7

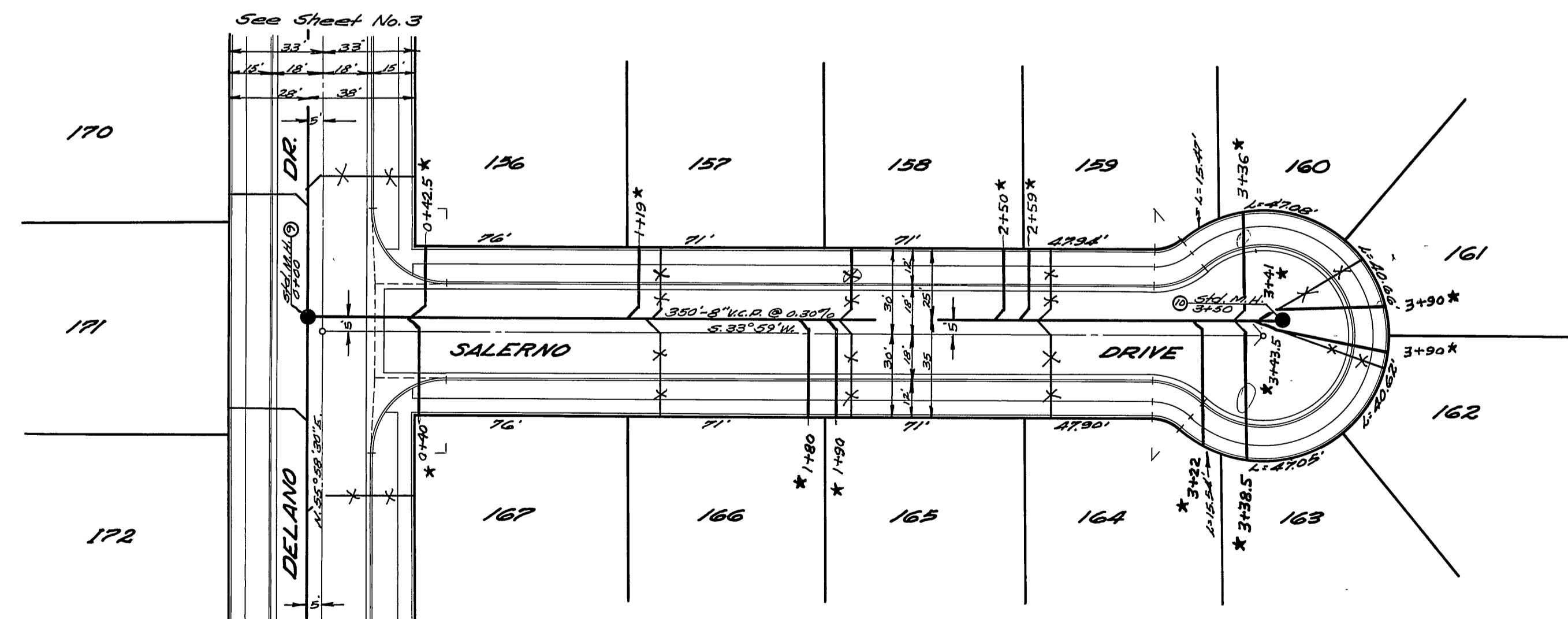
* = As Built sewer laterals, 2-18-59, 11/8/61

ELEV. 750



NOTE - Sewer laterals to be located in the field.

BENCH MARK
 B.M. - 3/4" Iron Pipe, sta. 7102.32, MONTICELLO AVE., 44'
 Ely of center line.
 Elev. 747.99
 T.B.M. - Tack in lead, 1/4" concrete header of Storm Drain
 at MONROE St crossing, 8' Sly. of My Tract Boundary
 Unit No. 3.
 Elev. 753.77



J.F. DAVIDSON - CIVIL ENGINEER
 R.E. No. 862
 RIVERSIDE, CALIFORNIA
 APPROVED BY *Robert Kiffin* DATE 4-9-57
 CITY OF RIVERSIDE, CALIFORNIA
 DEPARTMENT OF PUBLIC WORKS
 SEWER PLAN & PROFILE
 SALERNO DRIVE
 VILLA D'ESTE UNIT No. 3
 HORIZ. SCALE 1" = 40' VERT. SCALE 1" = 4'
 APPROVED BY *J.F. Davidson*
 Director of Public Works
 DATE *April 27, 1958*
 NO. S-80
 SHEET 7 OF 7

* = "As Built" sewer laterals, 2-18-59, H. Ball