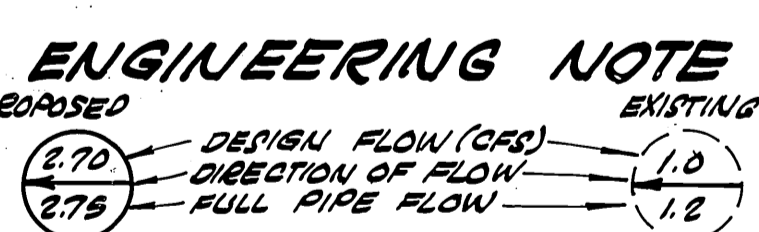
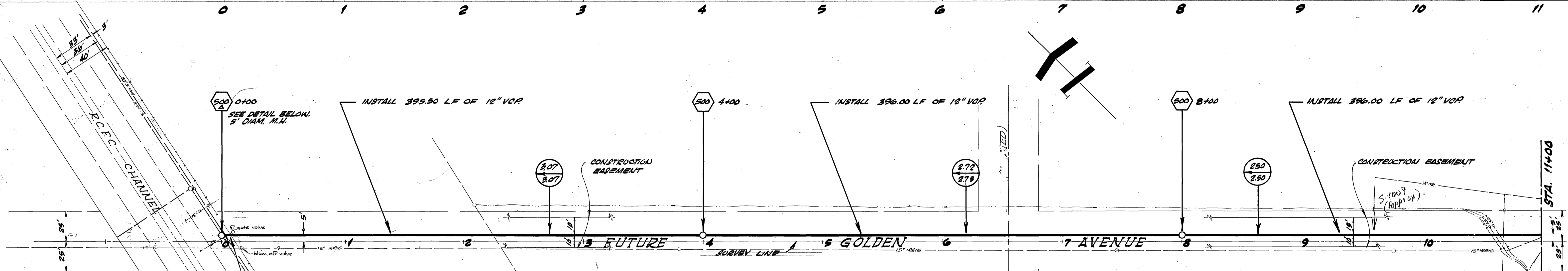
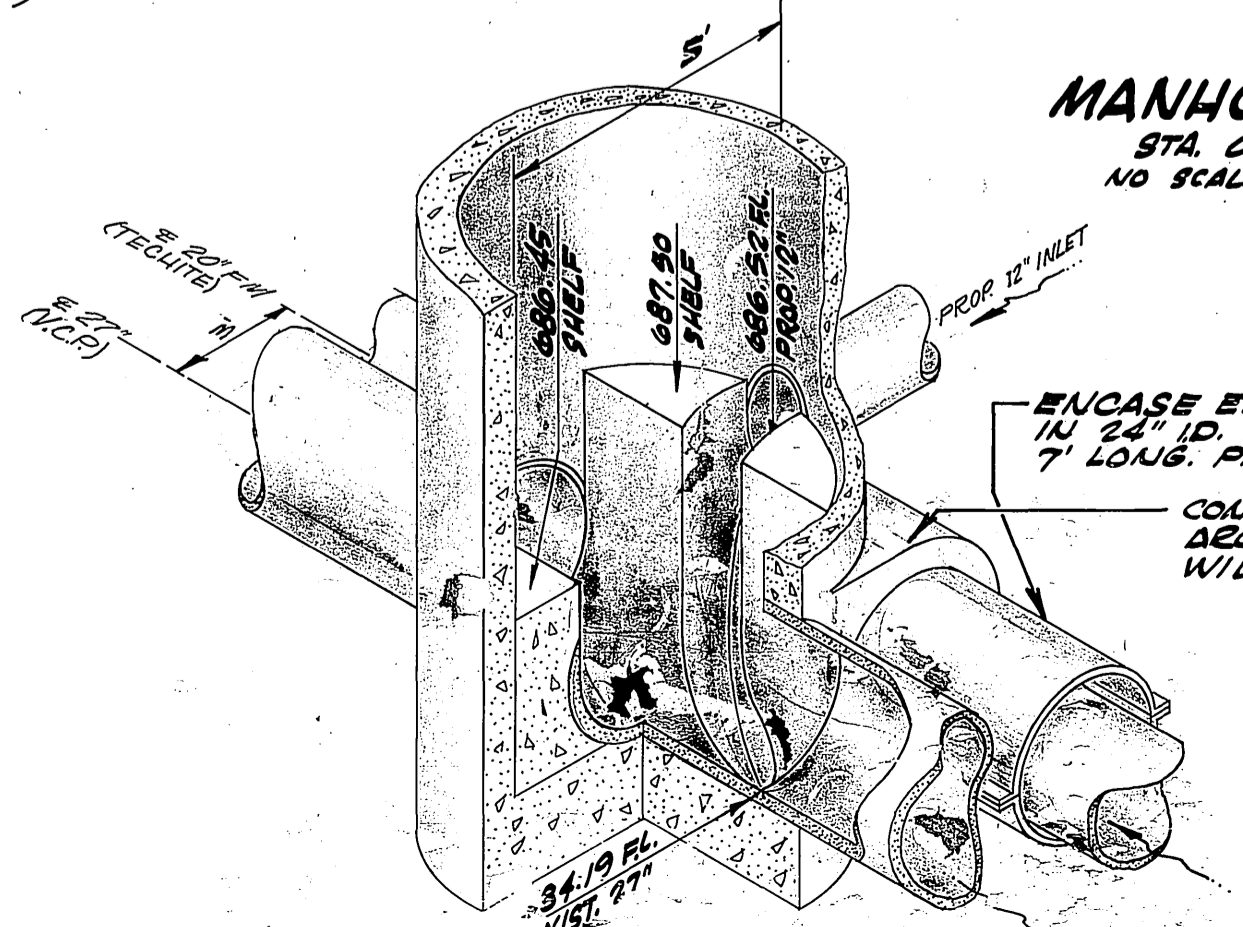


FB. 927/41-48
 B.M. BY N.M. IN U.F. CO. 28
 R. RETURN LA SIERRA
 AT COLLETT
 ELEV. 701.620

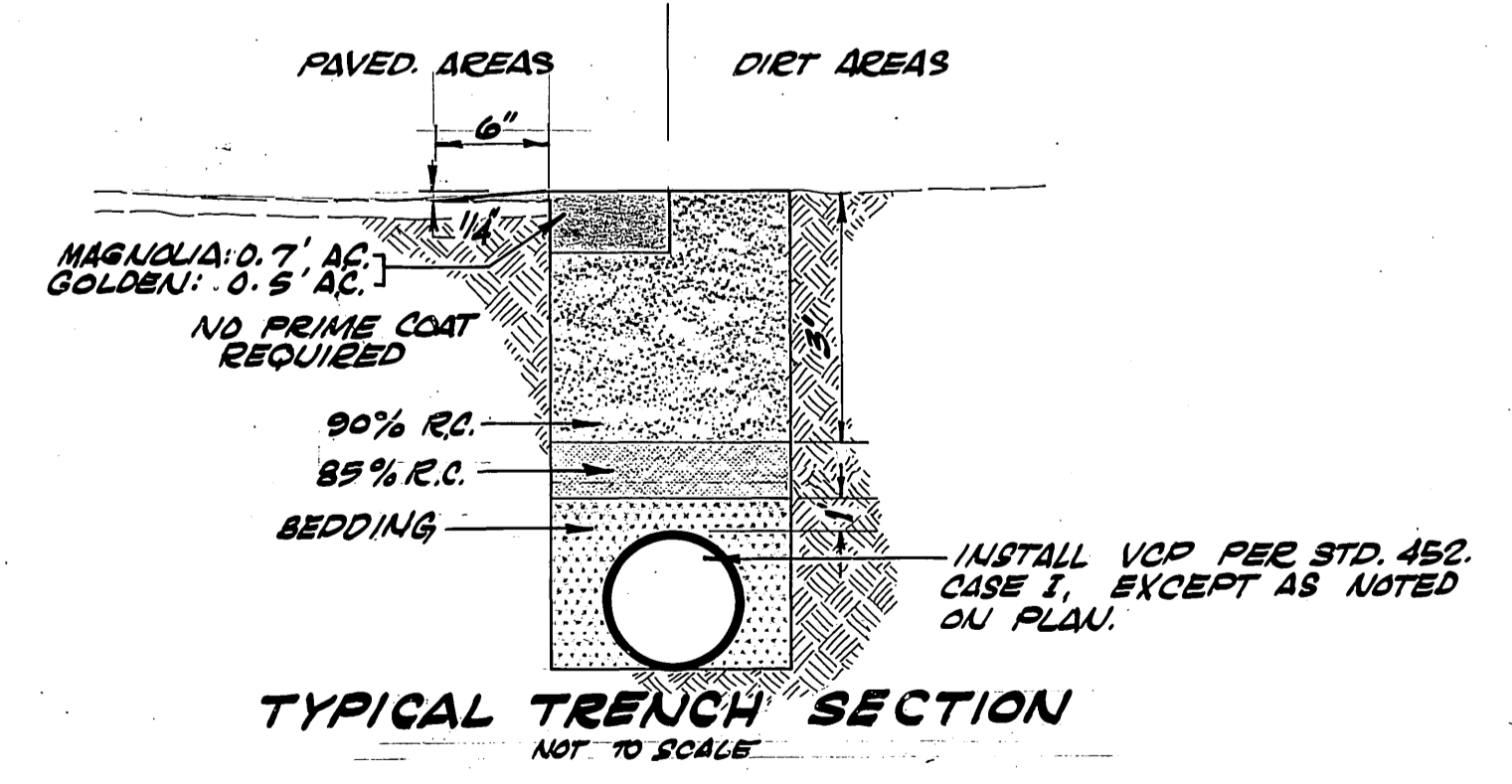


GENERAL NOTES:

1. CONSTRUCT MANHOLES PER STD. 500 AS INDICATED BY 500 STATIONS SHOWN ON PLAN.
2. EXACT LOCATIONS AND DEPTHS OF UNDERGROUND UTILITIES ARE UNKNOWN; THE LOCATIONS AND DEPTHS SHOWN ON PLAN ARE FROM UTILITY RECORDS. THE CONTRACTOR IS REQUESTED TO TAKE DUE PRECAUTIONARY MEASURES TO LOCATE AND PROTECT ALL UNDERGROUND FACILITIES.
3. WHERE THE PROPOSED SEWER CROSSES A WATER MAIN THE CONTRACTOR SHALL ENCASE THE SEWER OR WATER MAIN PER SECTION 306-2.1.1 OF THE SPECIAL PROVISIONS.
4. PIPE SHALL BE VCP INSTALLED PER STD. 452, CASE 1, EXCEPT AS ON PLAN AND TYPICAL TRENCH SECTION ON THIS SHEET.
5. ANY FENCE REMOVED SHALL BE REPLACED TO ORIGINAL CONDITION BY CONTRACTOR.
6. CONTRACTOR SHALL RESTORE TO ORIGINAL CONDITION ANY DRAINAGE DITCHES, CURBS OR OTHER IMPROVEMENTS DAMAGED BY CONSTRUCTION. IN THE EVENT OF DAMAGE TO ANY OF THE EXISTING PIPE LINES AND/OR DRAIN LINES, THE CONTRACTOR SHALL REPAIR THEM IMMEDIATELY.
7. PLACE "T" PER STD. 562 AS INDICATED BY STATIONS 5+10 AND 6+10 ON PLAN.

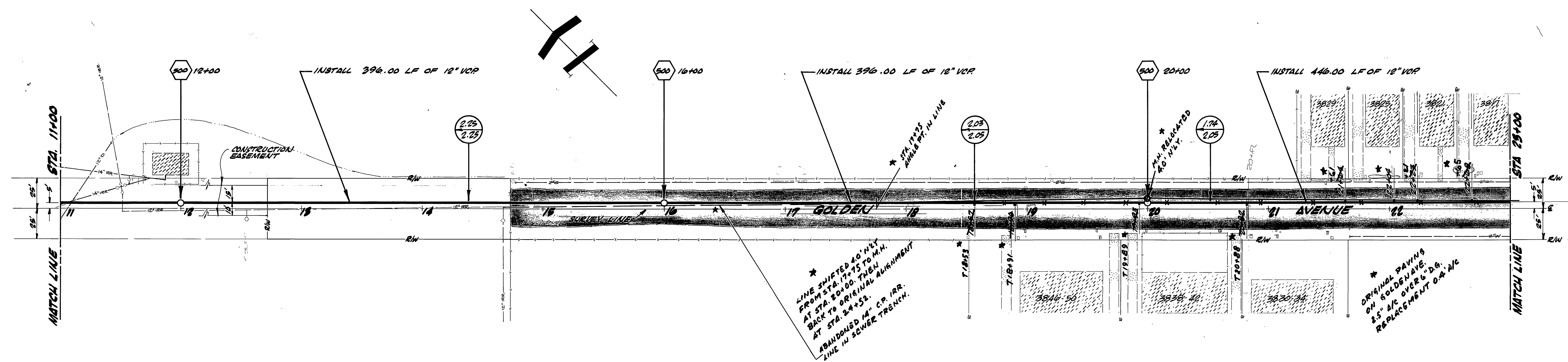
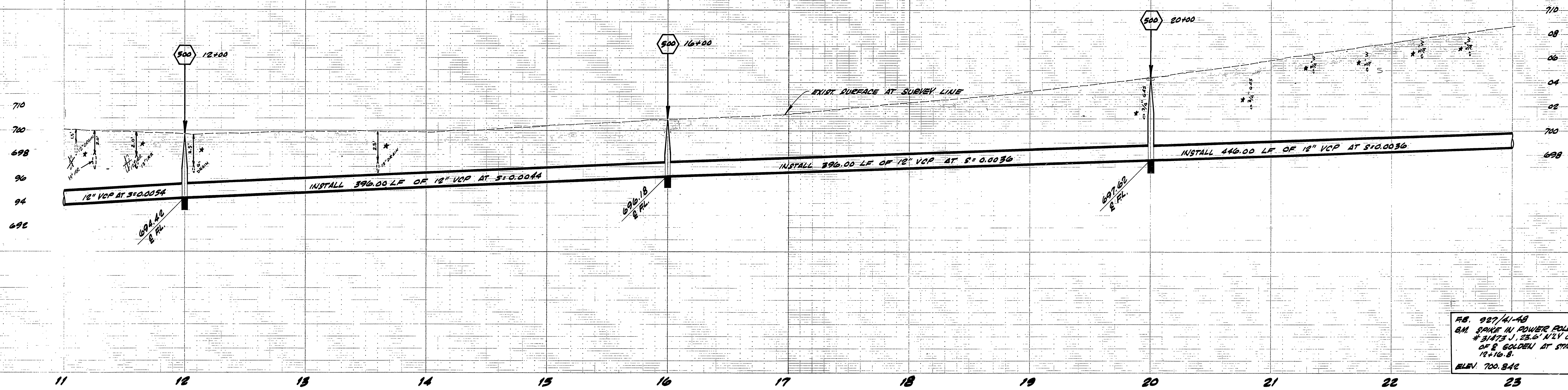


MANHOLE DETAIL
 STA. 0+00
 NO SCALE



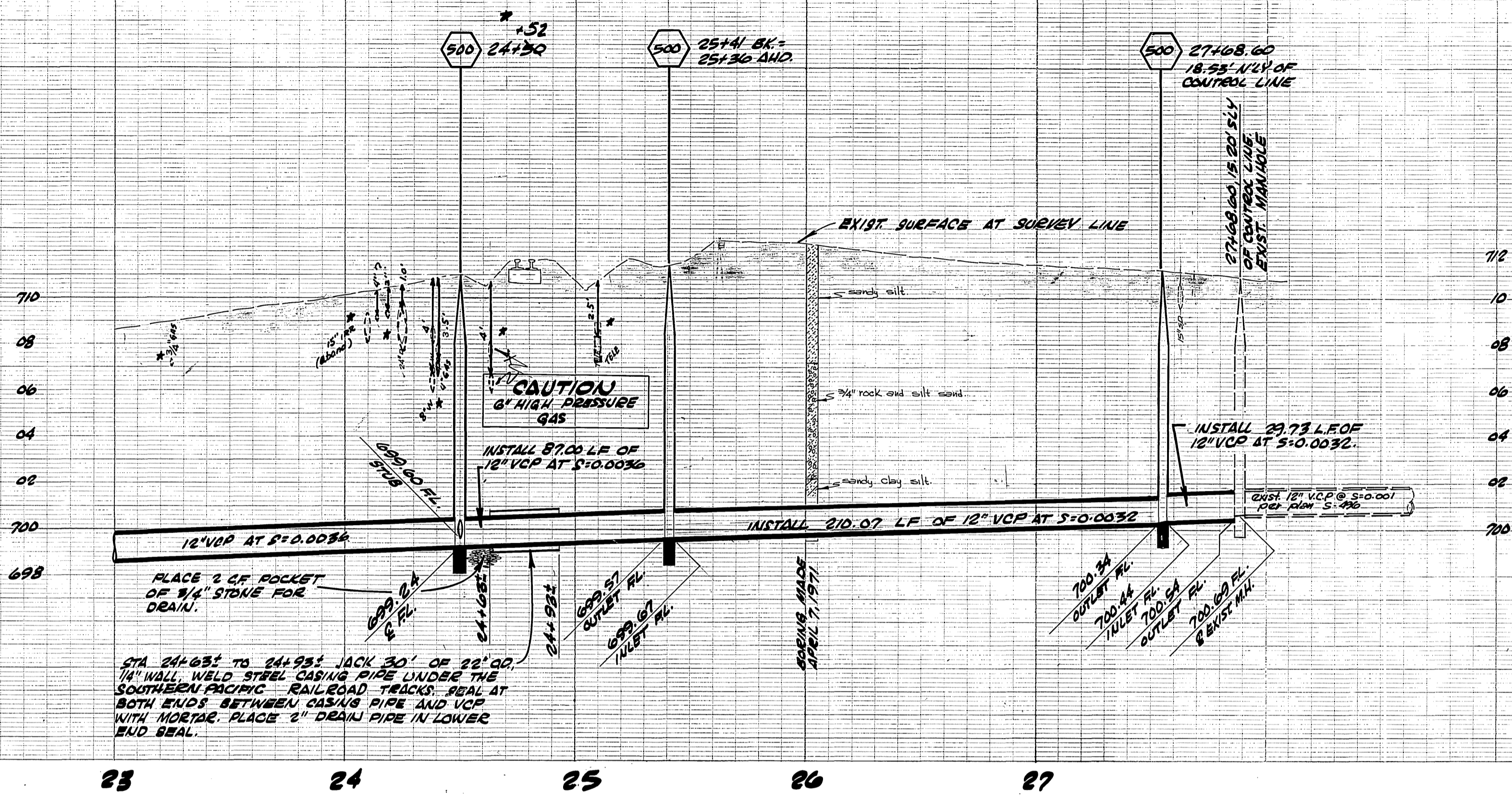
TYPICAL TRENCH SECTION
 NOT TO SCALE

CITY OF RIVER SIDE, CALIFORNIA DEPARTMENT OF PUBLIC WORKS		Magnolia Avenue Trunk Sewer Lift Station 7 Abandonment		PROJECT NO. 503 S-801 SHEET 1 OF 3 FILE NO.
APPROVED BY: PRINCIPAL ENGINEER DATE:	APPROVED BY: SUPERVISOR DATE:	REVISIONS:	HORIZ. SCALE: 1" = 40' VERT. SCALE: 1" = 4' R 45 BUILT, 11-24-71 JW	

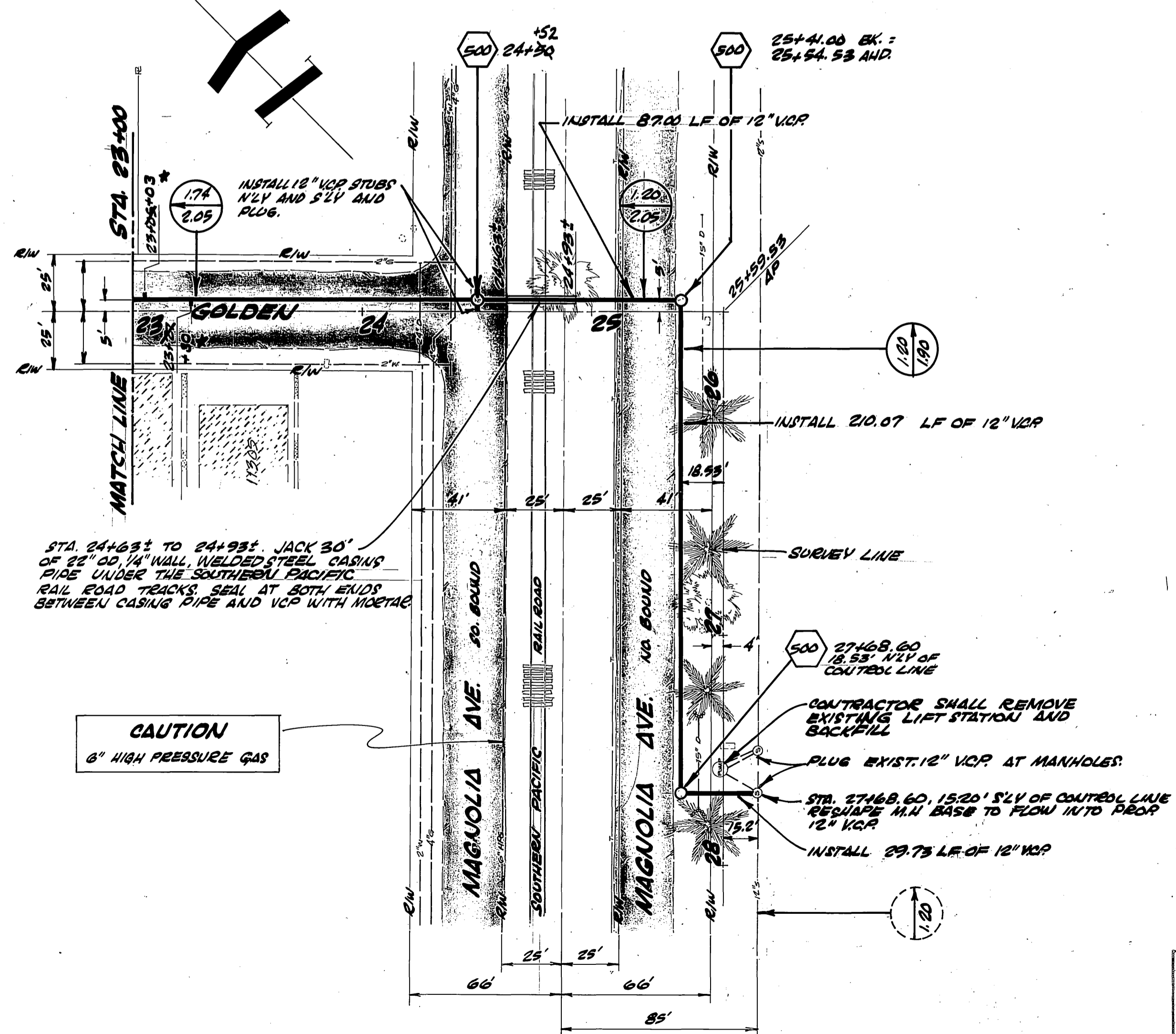


* AS BUILT, 11-24-71 JW

CITY OF RIVERSIDE, CALIFORNIA DEPARTMENT OF PUBLIC WORKS		Magnolia Avenue Trunk Sewer-Lift Station 7 Abandonment		PROJECT NO. 363 S - 801 SHEET 2 OF 3
APPROVED BY: _____ PRINCIPAL ENGINEER	BY: _____ DATE: 11/27/71	APPROVED BY: _____ TRAFFIC DIVISION	DATE: 11/27/71	FILE NO.
DESIGNED BY: S.J.B.	DRAWN BY: _____	CHECKED BY: _____	HORIZ. SCALE: 1" = 40' VERT. SCALE: 1" = 4'	



F.B. 927/41-48
 6.M. SPIKE IN POWER POLE
 5'31"73 J, 23.6' N24 OF
 2 GOLDEN AT STA.
 24+93.8
 ELEV. 700.842



85 BUILT, 11-24-71 JW

CITY OF RIVERSIDE, CALIFORNIA DEPARTMENT OF PUBLIC WORKS				PROJECT NO. 563	
Magnolia Avenue Trunk Sewer-Lift Station 7 Abandonment				S-801	
APPROVED BY: [Signature]				DATE: 7-77	
PRINCIPAL ENGINEER: [Signature]				DATE: 7-77	
TRAFFIC DIVISION: [Signature]				DATE: 7-77	
DESIGNED BY: S. J. B. DRAWN BY: [Signature]				CHECKED BY: [Signature]	
HOP SCALE: 1" = 40'				PLAN SCALE: 1" = 40'	