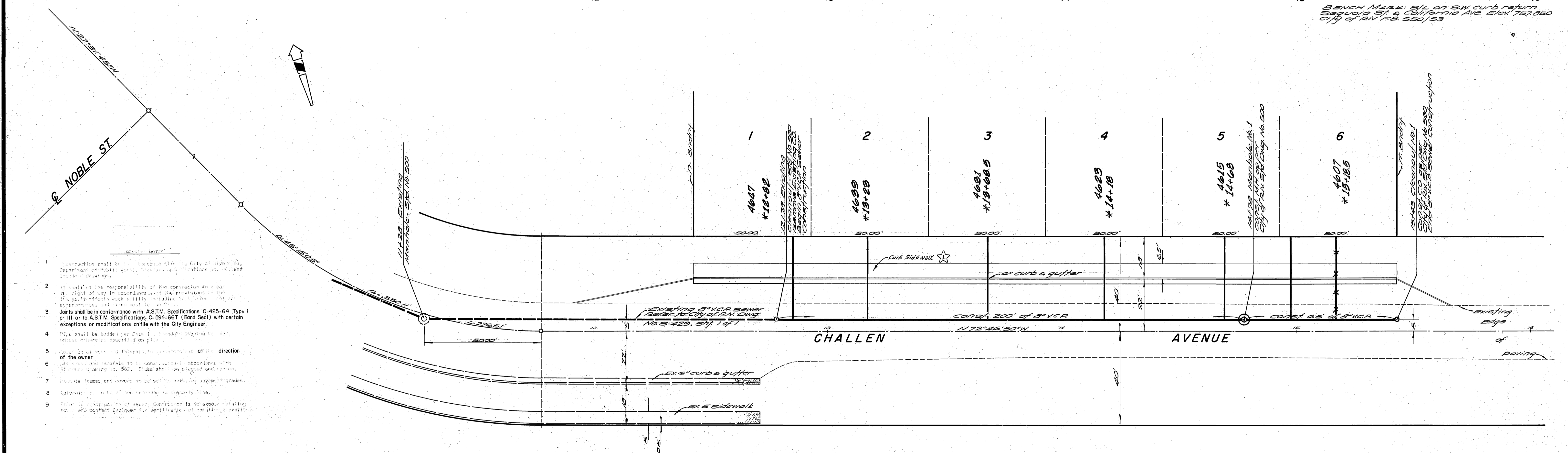


BENCH MARK: 5/11 ON SW CURB RETURN
 Sequoia St. & California Ave. Elev. 757.850
 City of Riv. F.B. 550/53



- Construction shall be in accordance with the City of Riverside, Department of Public Works, Standard Specifications No. 451 and Standard Drawings.
- It shall be the responsibility of the contractor to clear the right of way in accordance with the provisions of the Standard Specifications No. 500, including but not limited to trees, structures and all other obstructions and at his own cost to the City.
- Joints shall be in conformance with A.S.T.M. Specifications C-425-64 Type I or III or to A.S.T.M. Specifications C-594-67 (Sand Seal) with certain exceptions or modifications on file with the City Engineer.
- Pipes shall be laid on their side unless otherwise specified on plan.
- Manholes shall be constructed in accordance with the direction of the owner.
- Manhole and cleanout covers shall be constructed in accordance with Standard Drawing No. 500. Covers shall be covered and sealed.
- Manhole frames and covers to be set to existing pavement grades.
- Manholes shall be 48" and extended to proper depth.
- Prior to construction of sewer, contractor to file with existing manhole and cleanout Engineer for verification of existing elevations.

QUANTITY ESTIMATE

Manholes, Std. No. 500	1 EA
Cleanouts, Std. No. 500	1 EA
8" Vitrified Clay Pipe (VCP)	265 L.F.
4" Vitrified Clay Pipe (VCP)	2.10 L.F.
8" x 4" Vipes	6 EA
Paving Replacement	708 S.F.

* as built 7-19-71

ALBERT A. WEBB ASSOCIATES CIVIL ENGINEERS RIVERSIDE, CALIFORNIA APPROVED BY: <i>L.A. Wainwright</i> DATE: 7-22-70 R.E. No. 18056		CITY OF RIVERSIDE, CALIFORNIA PUBLIC WORKS DEPARTMENT APPROVED BY: <i>[Signature]</i> DATE: 7-23-70 PRINCIPAL ENGINEER PARK DEPARTMENT TRAFFIC DIVISION CHIEF PUB. WKS. ENGR.		SEWER PLAN AND PROFILE CHALLENGE AVENUE BET NOBLE ST. & VAN BUREN BLVD. TRACT No 4096 SCALE: HORIZ. 1" = 20' VERT. 1" = 2'	ACCOUNT No. DRAWING NUMBER S-804 SHEET 1 OF 1 70-116-B
-----------------------------------------------------------------------------------------------------------------------------------------------------	--	--------------------------------------------------------------------------------------------------------------------------------------------------------------------------------------------------------	--	-------------------------------------------------------------------------------------------------------------------------------------------------------------	----------------------------------------------------------------------------------