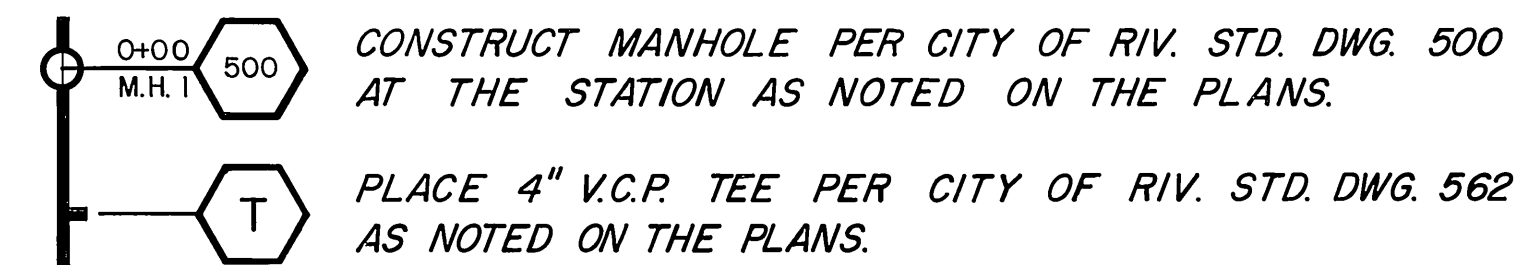


CONSTRUCTION LEGEND



SECTION PLAN



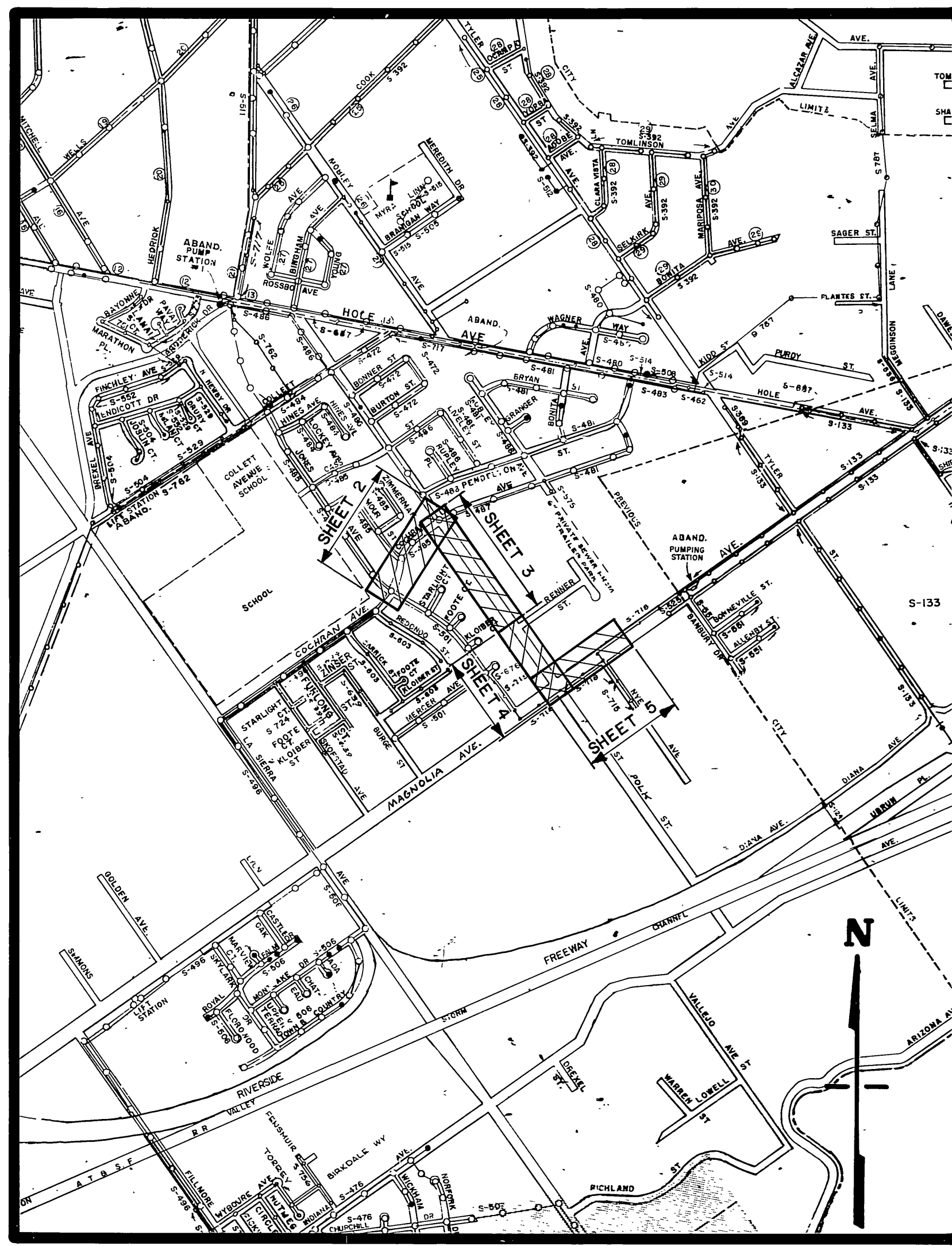
RIVERSIDE CALIFORNIA



PUBLIC WORKS DEPARTMENT POLK STREET TRUNK SEWER

SHEET INDEX

| | |
|---------|---|
| SHEET 1 | TITLE SHEET |
| " 2 | PLAN & PROFILE OF SEWER IN COCHRAN BETWEEN JONES & POLK |
| " 3 | PLAN & PROFILE OF SEWER IN POLK BETWEEN COCHRAN & RENNER |
| " 4 | PLAN & PROFILE OF SEWER IN POLK BETWEEN RENNER & MAGNOLIA |
| " 5 | PLAN & PROFILE OF SEWER IN MAGNOLIA BETWEEN POLK & NYE |



EXISTING CULTURE AND UNDERGROUND LEGEND

EXISTING UNDERGROUND UTILITIES

| | | | |
|-----------------|------------|--------------------|-----|
| SANITARY SEWER | 8" VCP-S | TELEPHONE CONDUIT | T |
| WATER LINE | 6" CI-W | ELECTRICAL CONDUIT | E |
| STORM DRAIN | 24" RCP-SD | STREET LIGHTING | SL |
| CULVERT | 15" CONC-C | TRAFFIC SIGNAL | SIG |
| IRRIGATION LINE | 20" IRR | FIRE ALARM | F |
| GAS LINE | 3" M-G | | |

EXISTING TOPOGRAPHY



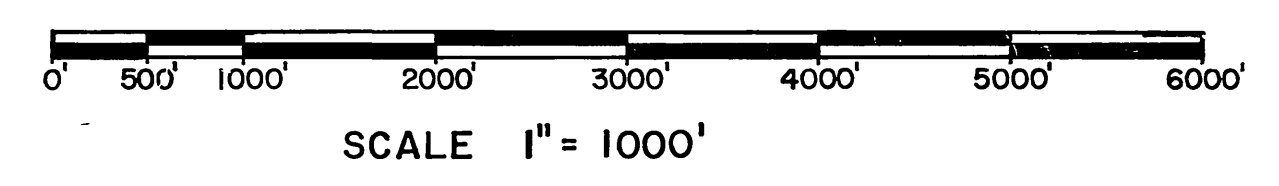
GENERAL CONSTRUCTION NOTES

- ALL MANHOLE SHAFTS SHALL BE PRECAST CONCRETE AS MANUFACTURED BY INLAND CONCRETE ENTERPRISES (TEL. 714-682-2833) OR APPROVED EQUAL.
- PIPE SHALL BE 15" V.C.P., INSTALLED PER CITY OF RIV. STD. DWG. 452, CASE I BEDDING.
- TRENCH BACKFILL AND PAVEMENT REPLACEMENT SHALL BE 3" A.C. OVER 6" A.B. PER CITY OF RIV. STD. DWG. 453; SEE SPECIAL PROVISIONS.
- LOCATION OF TEES AND LATERALS AS NOTED;
 - NO SPECIFIC LOCATION OBTAINED - CONTACT THE PROPERTY OWNER,
 - FOR ALL OTHERS, LOCATIONS FURNISHED BY PROPERTY OWNERS ARE ON FILE AT DEPT. OF PUBLIC WORKS.
- MAILBOXES ALONG POLK STREET AND MAGNOLIA AVE. SHALL BE REMOVED AND RESET AS NECESSARY.

| | | |
|---------------------------|---------------------|---|
| ⊙ SANITARY SEWER MH | ⊙ POWER POLE | ⊞ RAILROAD TRACKS |
| ⊙ SANITARY SEWER CLEANOUT | ⊙ GUY POLE | ⊞ RAILROAD SIGN |
| ⊙ STORM DRAIN MH | ⊙ POLE & GUY ANCHOR | ⊞ RAILROAD SIGNAL |
| ⊙ IRRIGATION WEIR | ⊙ PULL BOX | |
| ⊙ WATER MH | ⊙ TRAFFIC SIGN | ⊙ STREET LIGHT (UPRIGHT) |
| ⊙ GAS MH | ⊙ PARKING METER | ⊙ STREET LIGHT |
| ⊙ ELECTRIC MH | ⊙ FIRE ALARM BOX | ⊙ TRAFFIC SIGNAL |
| ⊙ TELEPHONE MH OR VAULT | ⊙ STREET NAME SIGN | ⊙ TRAFFIC SIGNAL ON MAST ARM |
| ⊙ WATER METER | ⊙ GAS METER | ⊙ TRAFFIC CONTROL BOX |
| ⊙ FIRE HYDRANT | ⊙ MAIL BOX | ⊙ TRAFFIC SIGNAL DETECTOR |
| ⊙ SPRINKLER HEAD | ⊙ HYDRANT OR FAUCET | ⊙ PEDESTRIAN CONTROL FOR TRAFFIC SIGNAL |
| ⊙ VALVE | | |

| | |
|--------------------------------------|---------------------------------|
| CONCRETE | TREE SHOWING DIAMETER IN INCHES |
| ASPHALT | PALM SHOWING DIAMETER IN INCHES |
| EDGE OF PAVEMENT | SHRUBBERY |
| BUILDING | TREE STUMP DIAMETER IN INCHES |
| UNDERGROUND OR OVERHANGING STRUCTURE | |

PROJECT LOCATION PLAN



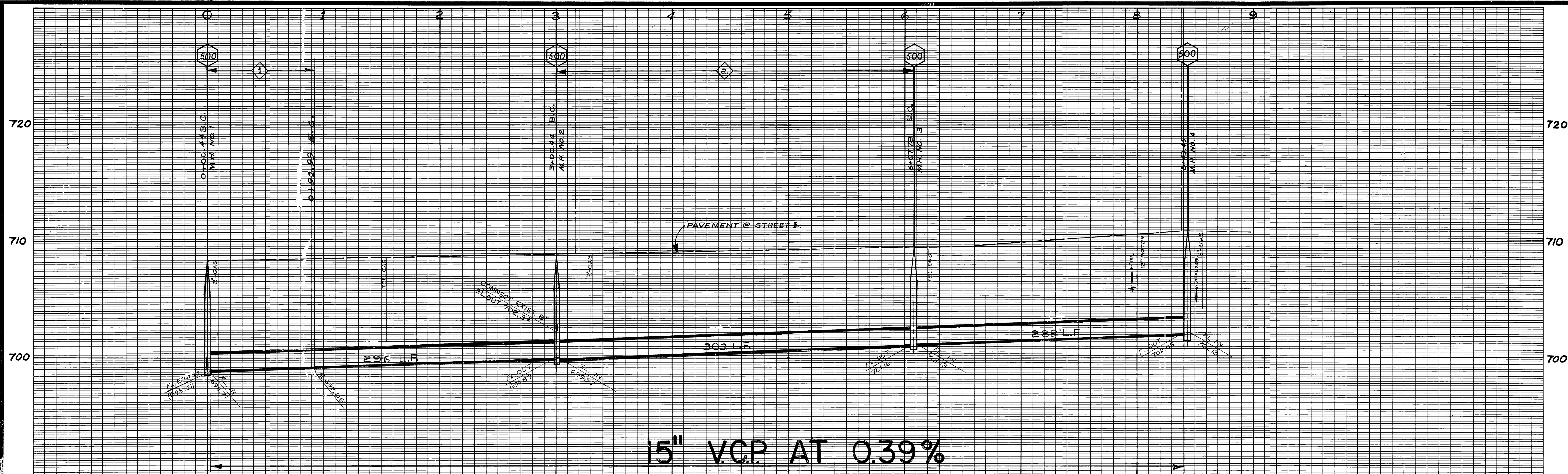
-CAUTION-
PACIFIC TELEPHONE CABLES UNDERGROUND
BEFORE EXCAVATING CALL COLLECT:

After Hours
7:30 A.M. to 5 P.M. & Holidays

| | | |
|-----------------------|--------------|-----------------|
| Orange County | 714-633-0811 | 714-547-6606 |
| Riverside County | 714-684-0071 | 714-547-6606 |
| Inyo County | 714-684-0071 | 714-547-6606 |
| San Bernardino County | 714-684-0071 | 714-547-6606 |
| Los Angeles County | 213-621-3111 | 24 HOUR SERVICE |
| Ventura County | 213-621-3111 | |
| San Diego County | 714-298-0595 | 714-232-0027 |

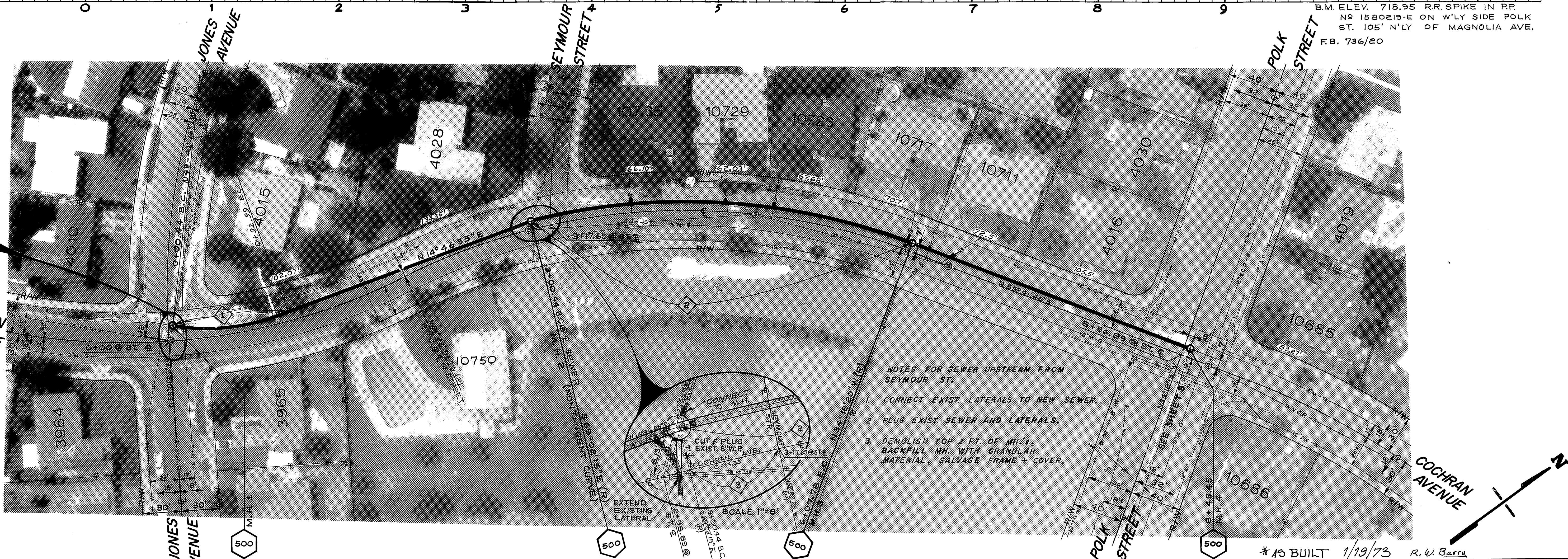
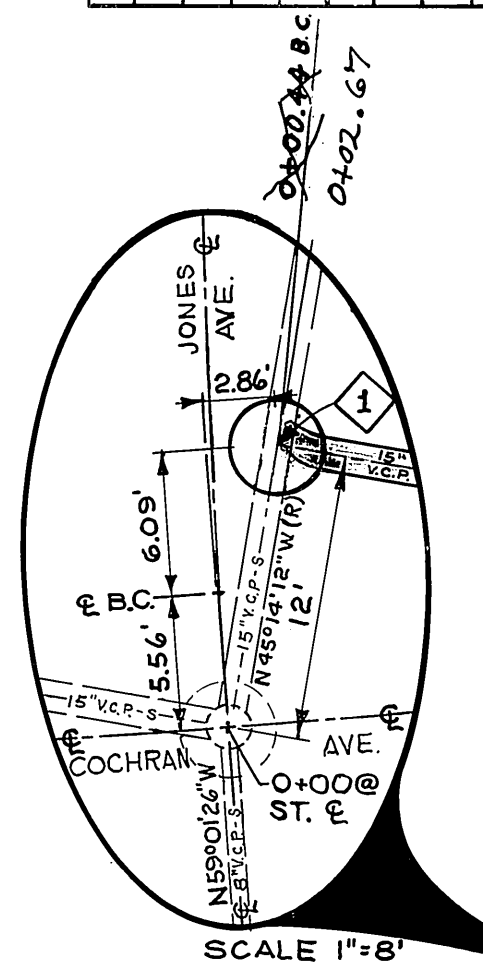
FOR FREE CABLE LOCATING SERVICE

| | | | | |
|--|--|--|--|-----------------------------------|
| CITY OF RIVERSIDE, CALIFORNIA PUBLIC WORKS DEPARTMENT | | POLK STREET TRUNK SEWER | | ACCOUNT No. 564 DRAWING NUMBER |
| APPROVED BY: [Signature] PRINCIPAL ENGINEER | | APPROVED BY: [Signature] DIRECTOR OF PUBLIC WORKS | | S-806 |
| TRAFFIC DIVISION | | TITLE SHEET | | |
| CHIEF PUB. WKS. ENGR. | | DESIGNED BY: [Signature] DRAWN BY: [Signature] CHECKED BY: [Signature] | | SHEET 1 OF 5 |



15" V.C.P. AT 0.39%

B.M. ELEV. 718.95 RR SPIKE IN RP.
 NO 1580219-E ON W'LY SIDE POLK
 ST. 105' N'LY OF MAGNOLIA AVE.
 F.B. 736/20



- NOTES FOR SEWER UPSTREAM FROM SEYMOUR ST.
1. CONNECT EXIST. LATERALS TO NEW SEWER.
 2. PLUG EXIST. SEWER AND LATERALS.
 3. DEMOLISH TOP 2 FT. OF M.H.'s, BACKFILL M.H. WITH GRANULAR MATERIAL, SALVAGE FRAME + COVER.

| CURVE DATA | | | | |
|------------|---------|-----------|---------|---------|
| INDEX | R | Δ | T | L |
| ① | 200.00' | 26°30'49" | 47.12' | 92.55' |
| ② | 507.00' | 34°43'55" | 158.55' | 307.34' |
| ③ | 500.00' | 1°39'52" | 7.26' | 14.53' |

-CAUTION-
PACIFIC TELEPHONE
CABLES UNDERGROUND
BEFORE EXCAVATING
CALL COLLECT.

After Hours
 7:30 A.M. to 5 P.M. & Holidays
 Orange County 714-633-0811 714-547-6606
 Riverside County 714-684-0071 714-547-6606

| MARK | REVISIONS | APPR. | DATE |
|------|-----------|-------|------|
| | | | |

DESIGNED BY: *LAG* DRAWN BY: *RG-RE* CHECKED BY: *CRZ*

CITY OF RIVERSIDE, CALIFORNIA
 PUBLIC WORKS DEPARTMENT

APPROVED BY: *[Signature]* DATE: *8/16/72*
 PRINCIPAL ENGINEER
 PARK DEPARTMENT
 TRAFFIC DIVISION
 CHIEF PUB. WKS. ENGR.

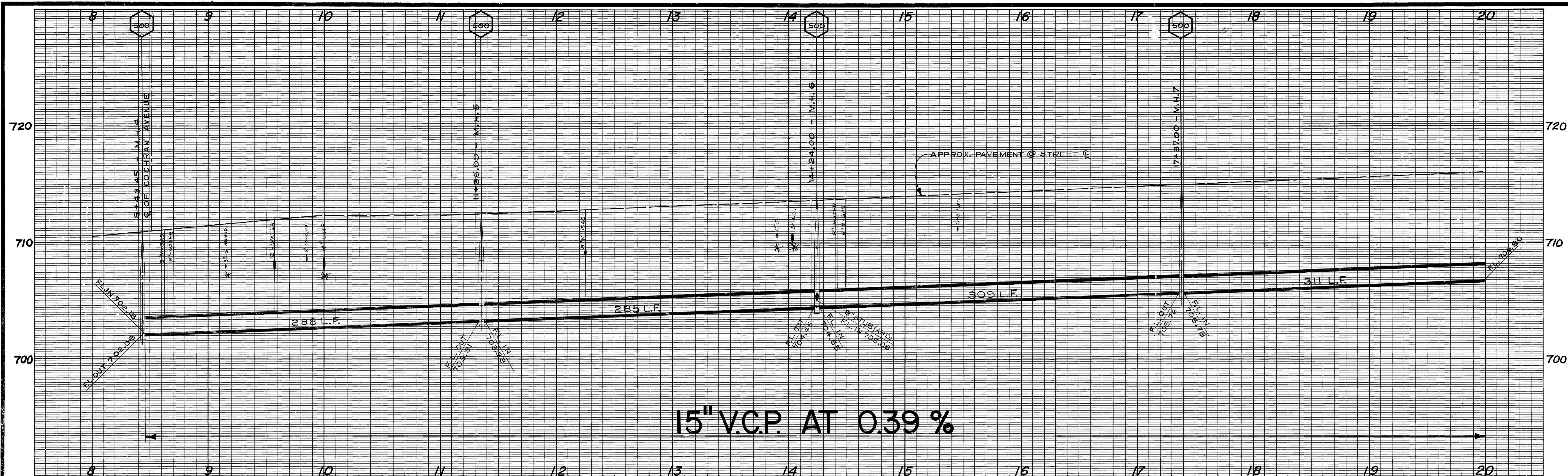
POLK STREET
TRUNK SEWER

PLAN & PROFILE OF SEWER IN COCHRAN
 BETWEEN JONES & POLK

HORIZ. SCALE: 1"=40'
 VERT. SCALE: 1"=4'

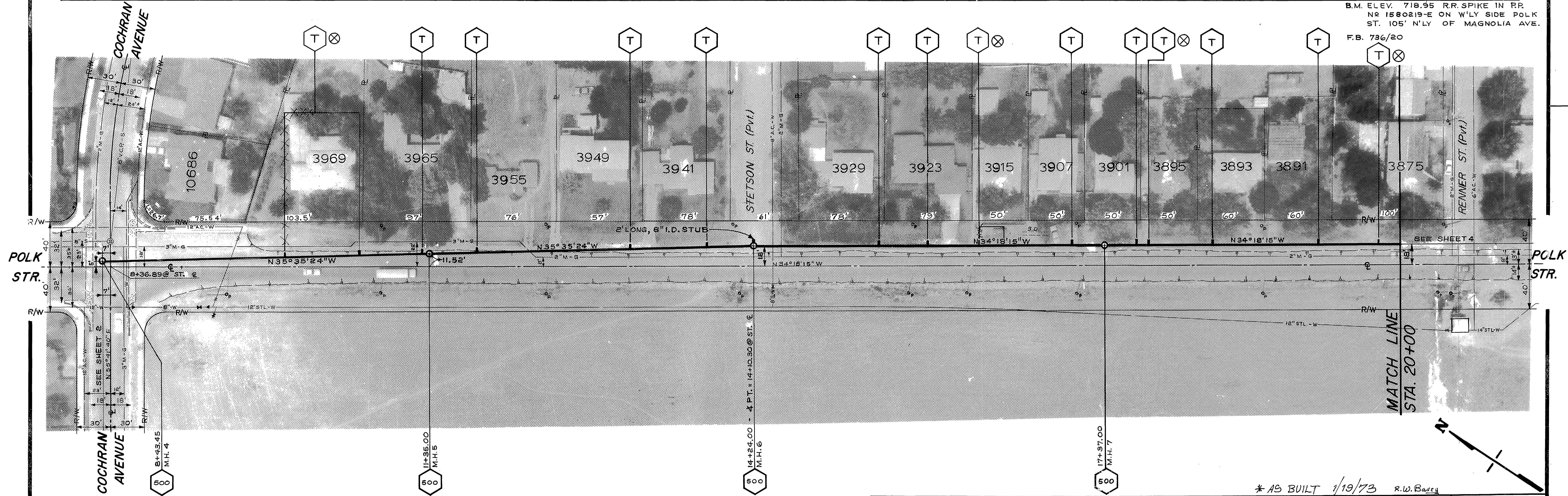
ACCOUNT No. 564
 DRAWING NUMBER
S-806
 SHEET 4 OF 5

* AS BUILT 1/19/73 R.W. Barry

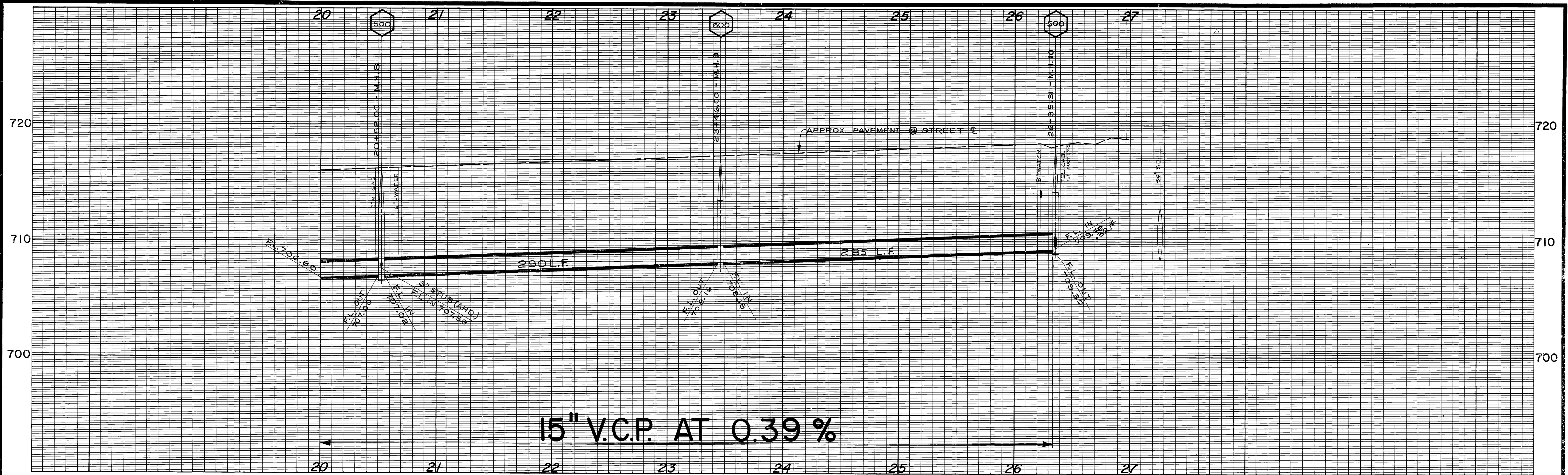


15" V.C.P. AT 0.39 %

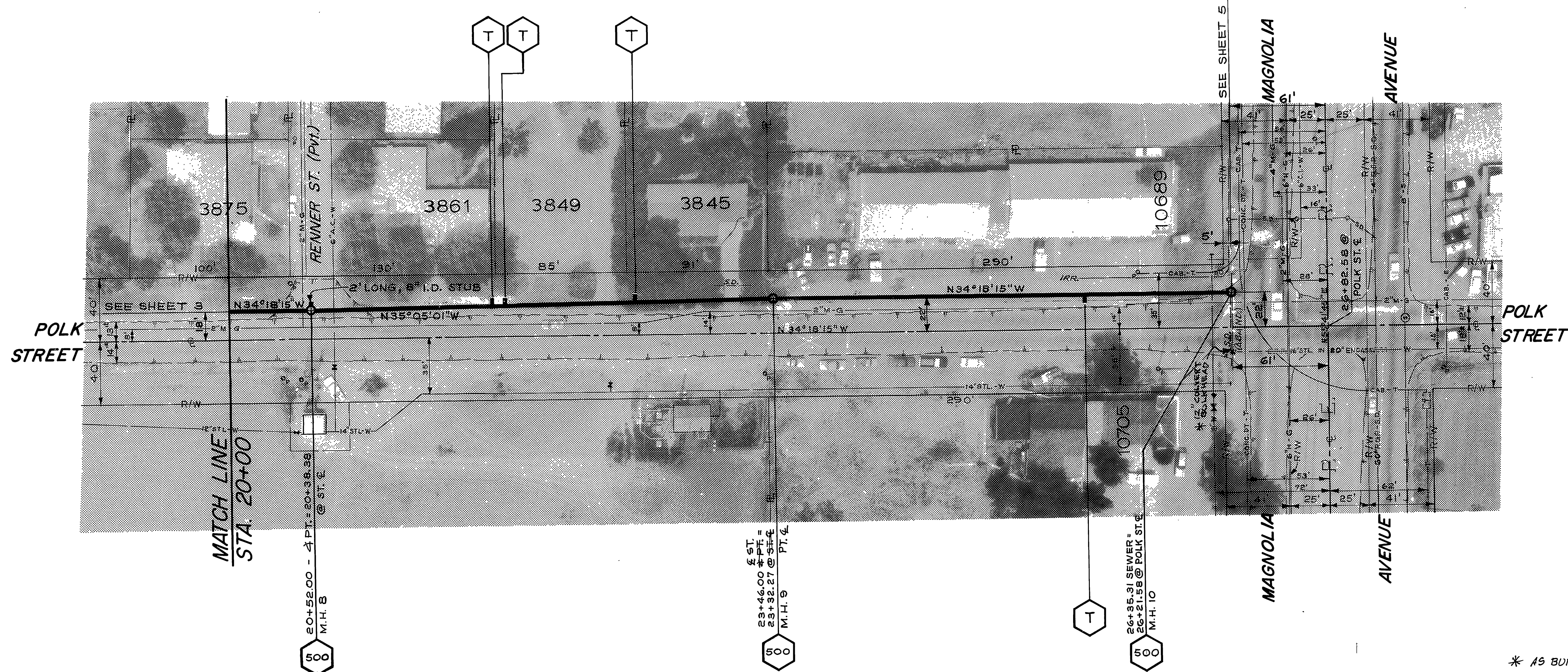
B.M. ELEV. 718.95 RR SPIKE IN RR.
 NO 1580219-E ON W'LY SIDE POLK
 ST. 105' N'LY OF MAGNOLIA AVE.
 F.B. 736/20



| | | | | | | |
|--|--|-----------------------|---|----------------------------|---|---|
| CITY OF RIVERSIDE, CALIFORNIA PUBLIC WORKS DEPARTMENT | | | | POLK STREET TRUNK SEWER | | ACCOUNT No. 564 DRAWING NUMBER S-806 |
| APPROVED BY PRINCIPAL ENGINEER <i>[Signature]</i> | | BY DATE 7/17/73 | APPROVED BY DIRECTOR OF PUBLIC WORKS <i>[Signature]</i> | | PLAN & PROFILE OF SEWER IN POLK BETWEEN COCHRAN & RENNER | SHEET 3 OF 5 |
| DESIGNED BY R.L.O. | | DRAWN BY W.P.G. | CHECKED BY S.P.L. | DATE 8/16/72 | HORIZ. SCALE: 1" = 40' VERT. SCALE: 1" = 4' | * AS BUILT 1/19/73 R.W. Barry |



B.M. ELEV. 718.95 R.R. SPIKE IN P.R.
 N^o 1580219-E ON W'LY SIDE POLK
 ST. 105' N'LY OF MAGNOLIA AVE.
 F.B. 736/20



* AS BUILT: 1/19/73 R.W. Barry

-CAUTION-
PACIFIC TELEPHONE
CABLES UNDERGROUND
 BEFORE EXCAVATING
 CALL COLLECT:
 7:30 A.M. to 5 P.M. & Holidays
 Orange County 714-633-0811 714-547-6606
 Riverside County 714-684-0071 714-547-6606

| MARK | REVISIONS | APPR. | DATE |
|------|-----------|-------|------|
| | | | |

CITY OF RIVERSIDE, CALIFORNIA
 PUBLIC WORKS DEPARTMENT

| | | | |
|-----------------------|---------|---------|--------------------------|
| APPROVED BY | BY | DATE | APPROVED BY |
| PRINCIPAL ENGINEER | WJ | 8/17/73 | W.J. Williams, Jr. |
| PARK DEPARTMENT | | | DIRECTOR OF PUBLIC WORKS |
| TRAFFIC DIVISION | 8/17/73 | | |
| CHIEF PUB. WKS. ENGR. | | | |

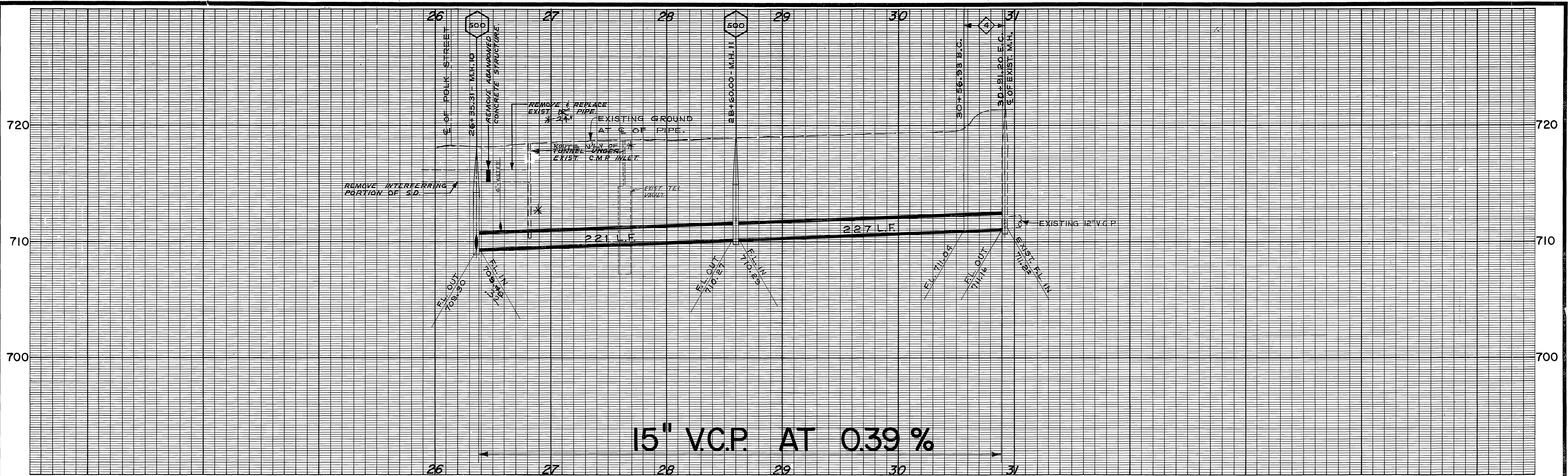
DESIGNED BY: *WJB* DRAWN BY: *WJB* CHECKED BY: *WJB*

POLK STREET
TRUNK SEWER

PLAN & PROFILE OF SEWER IN POLK
 BETWEEN RENNEN & MAGNOLIA

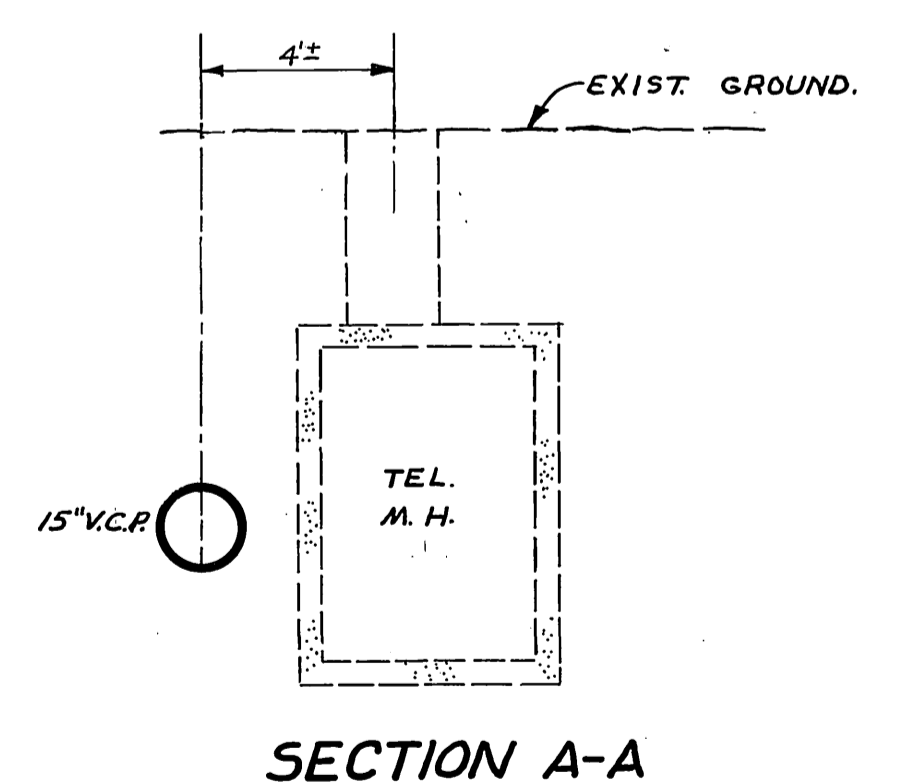
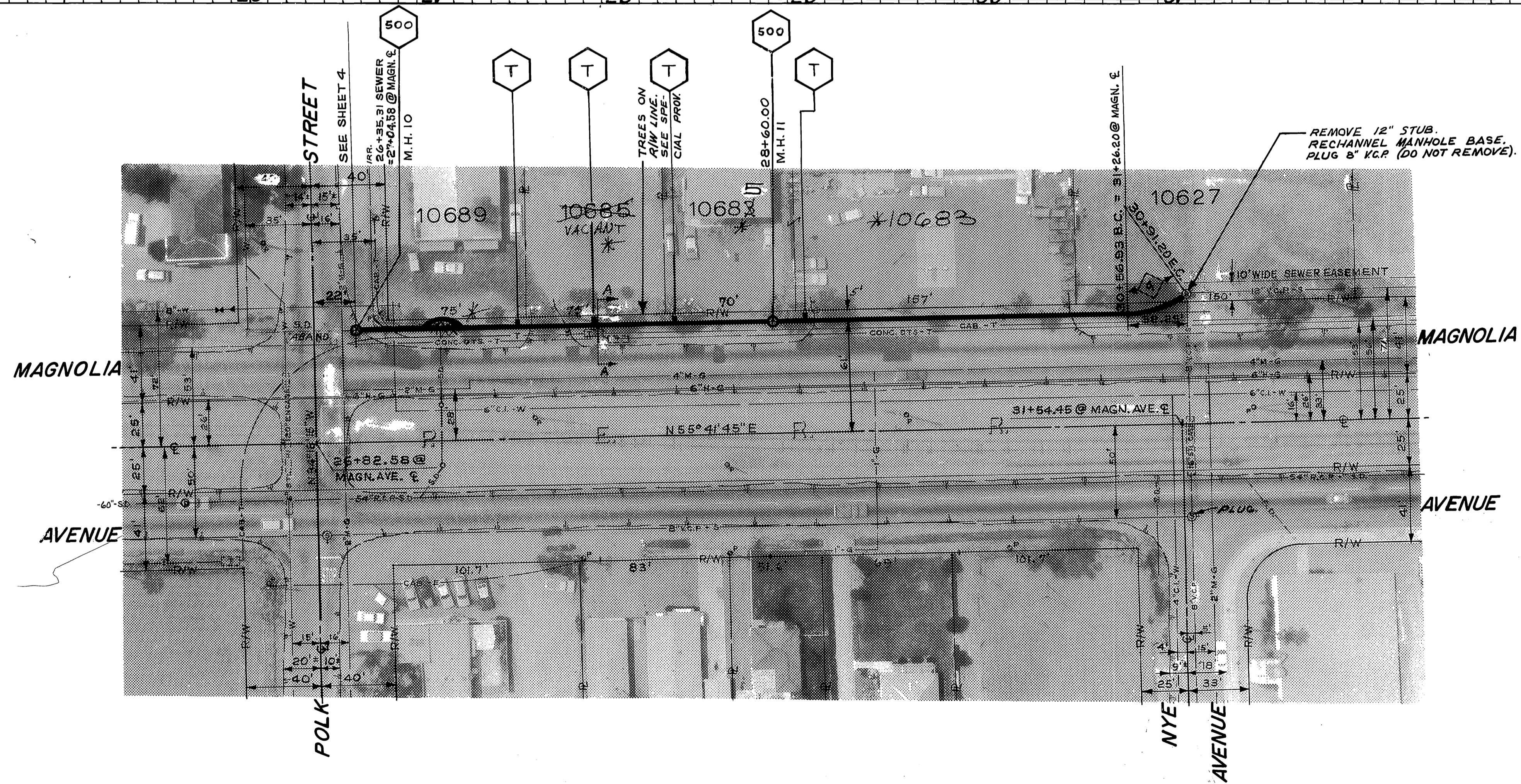
HORIZ. SCALE: 1" = 40'
 VERT. SCALE: 1" = 4'

ACCOUNT No. 564
 DRAWING NUMBER
S-806
 SHEET 4 OF 5



15" V.C.P. AT 0.39%

B.M. ELEV. 718.95 R.R. SPIKE IN RR. NO 1580219-E ON W'LY SIDE POLK ST. 105' N'LY OF MAGNOLIA AVE. F.B. 736/20



*AS BUILT 1/19/73 R.W. Barr

| CURVE DATA | | | | |
|------------|-----|-----------|--------|--------|
| INDEX | R | Δ | T | L |
| ① | 57' | 34°27'21" | 17.68' | 34.28' |
| | | | | |
| | | | | |

-CAUTION-
PACIFIC TELEPHONE
CABLES UNDERGROUND
BEFORE EXCAVATING
CALL COLLECT:
 7:30 A.M. to 5 P.M. After Hours & Holidays
 Orange County 714-633-0811 714-547-6686
 Riverside County 714-684-0071 714-547-6686

MARK REVISIONS APPR. DATE
 DESIGNED BY: RAG DRAWN BY: RAG-RE CHECKED BY: RAG

CITY OF RIVERSIDE, CALIFORNIA
 PUBLIC WORKS DEPARTMENT
 APPROVED BY: [Signature] DATE: 2/16/72
 PRINCIPAL ENGINEER: [Signature]
 PARK DEPARTMENT: [Signature]
 TRAFFIC DIVISION: [Signature]
 CHIEF PUB. WKS. ENGR.:

POLK STREET TRUNK SEWER
 PLAN & PROFILE OF SEWER IN MAGNOLIA BETWEEN POLK & NYE
 HORIZ. SCALE: 1"=40' VERT. SCALE: 1"= 4'

ACCOUNT No. 564
 DRAWING NUMBER
S-806
 SHEET 5 OF 5