

Manhole to be constructed at junction of 8" & 12" V.C.P.

NOTE:  
House connections on South side of Colorado to be constructed at option of Subdivider - Not a part of this subdivision

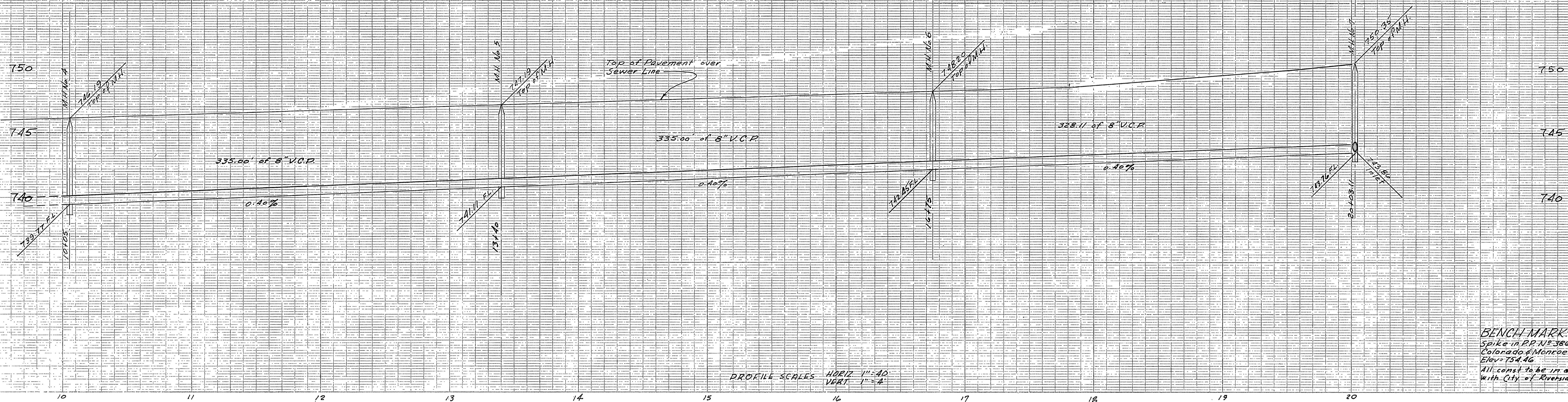
L. FREDERICK PACK - CIVIL ENGR.  
R.E. NO. 7448  
Covina, California  
APPROVED BY *[Signature]* DATE 3-21-57

CITY OF RIVERSIDE, CALIFORNIA  
DEPARTMENT OF PUBLIC WORKS

SEWER PLAN & PROFILE  
BROCKTON HEIGHTS NO. 6  
COLORADO AVENUE  
MONTICELLO AVE. N<sup>1</sup>/<sub>4</sub> to Sta. 10+05  
HORIZ. SCALE 1" = 40' VERT. SCALE 1" = 4'

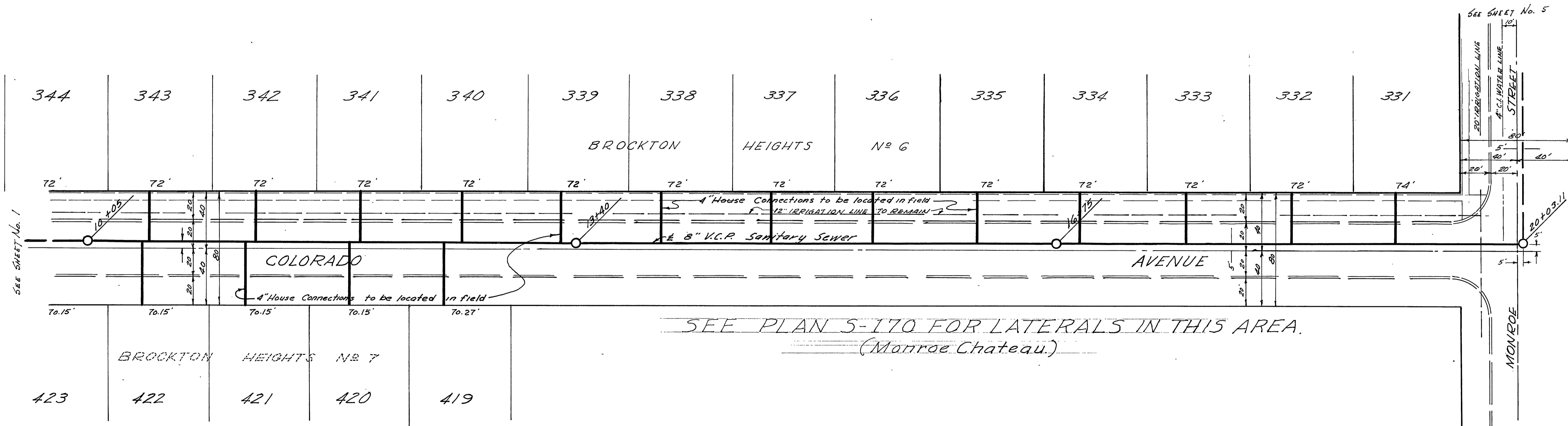
APPROVED BY *[Signature]*  
Director of Public Works  
DATE April 11, 1957  
NO. S-81  
SHEET 1 OF 5

Reimb. Contr. # 23

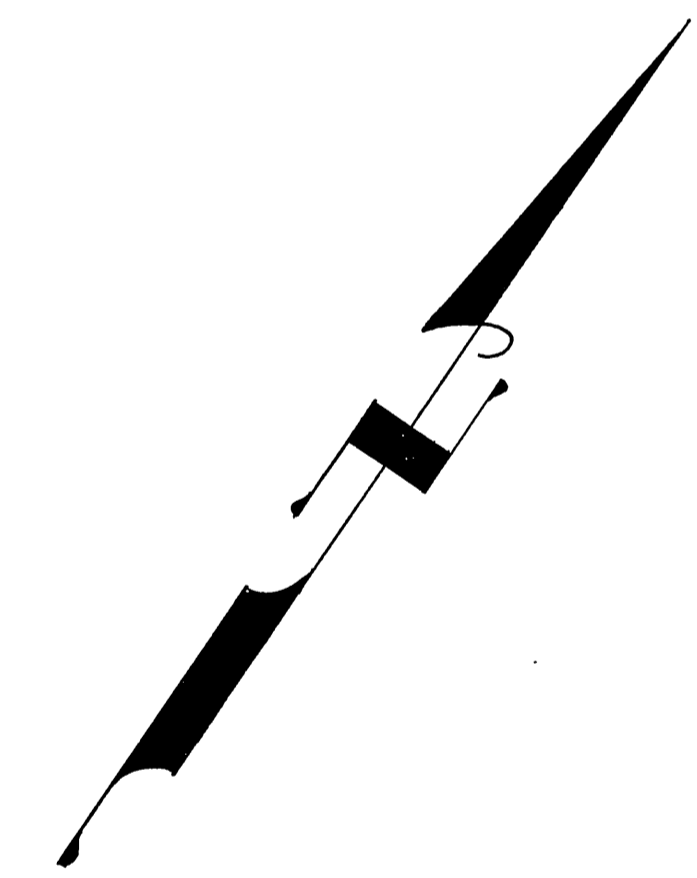


**BENCHMARK:**  
Spike in P.P. No. 3861-J,  
Colorado & Monroe  
Elev: 754.46  
All const. to be in accordance  
with City of Riverside Stds.

DRAWING SCALES: HORIZ 1" = 40'  
VERT 1" = 4'



SEE PLAN S-170 FOR LATERALS IN THIS AREA.  
(Monroe Chateau)



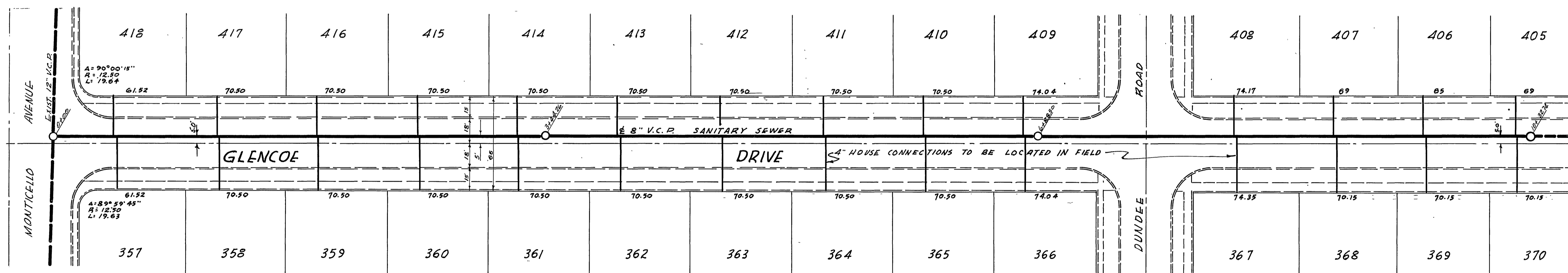
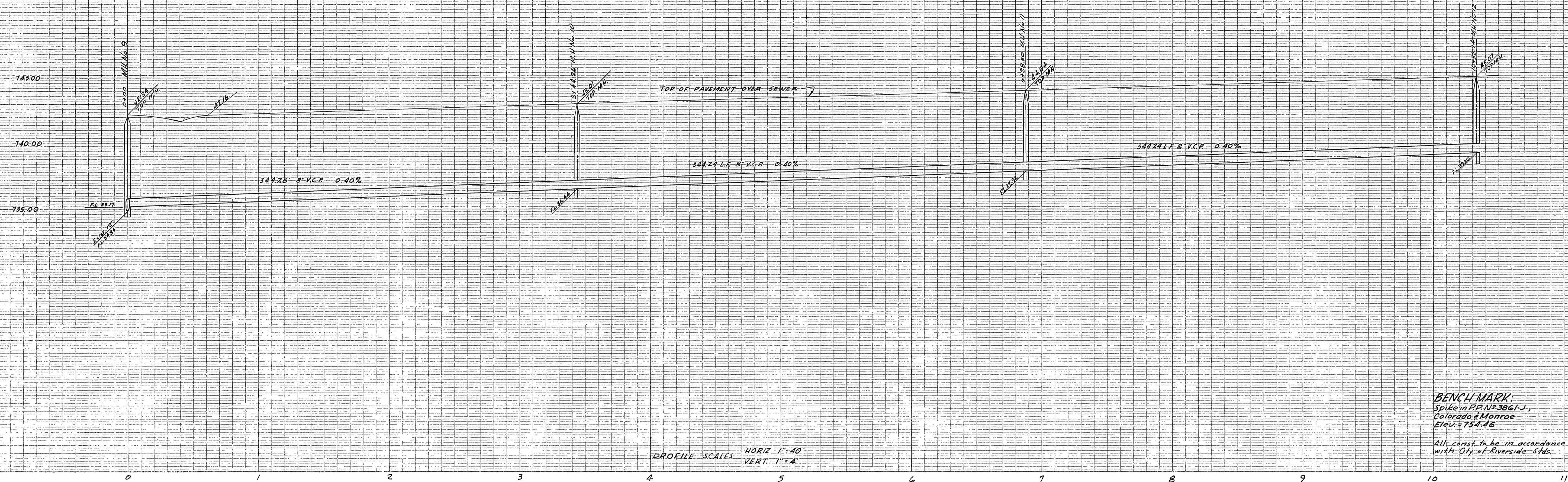
L. FREDERICK PACK - CIVIL ENGR.  
R.E. NO. 7448  
COVINA, CALIFORNIA  
APPROVED BY *[Signature]* DATE 3-21-57

CITY OF RIVERSIDE, CALIFORNIA  
DEPARTMENT OF PUBLIC WORKS

SEWER PLAN & PROFILE  
BROCKTON HEIGHTS NO. 6

COLORADO AVENUE  
FROM STATION 10+05 TO MONROE STREET  
HORIZ. SCALE 1" = 40' VERT. SCALE 1" = 4'

APPROVED BY *[Signature]* NO. **S-81**  
Director of Public Works  
DATE *[Signature]* SHEET 2 OF 5



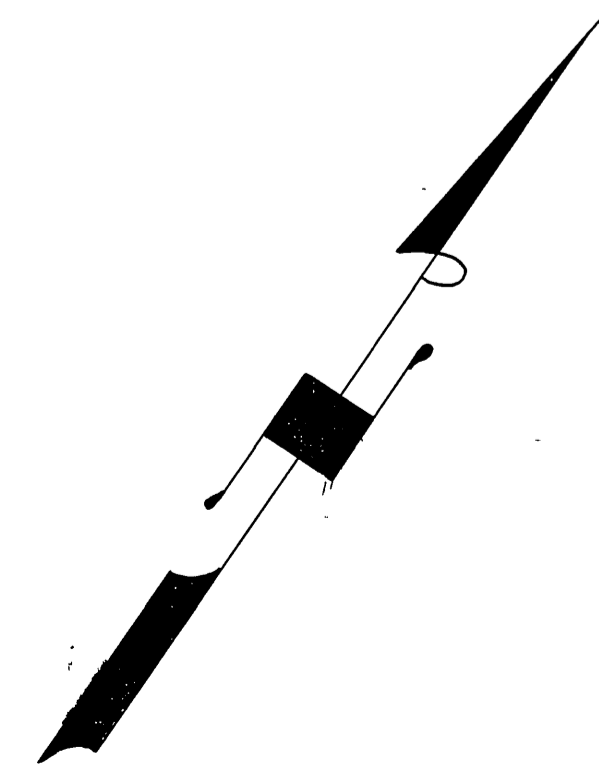
L. FREDERICK PACK CIVIL ENGR.  
P.E. NO. 7448  
Covina, CALIFORNIA  
APPROVED BY *[Signature]* DATE 3-21-57

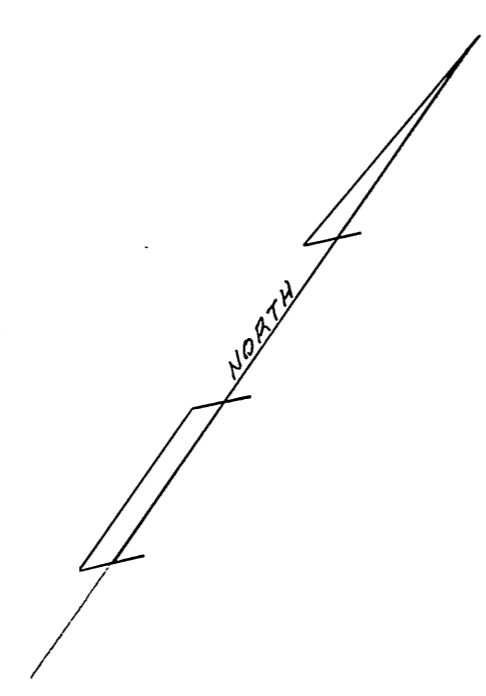
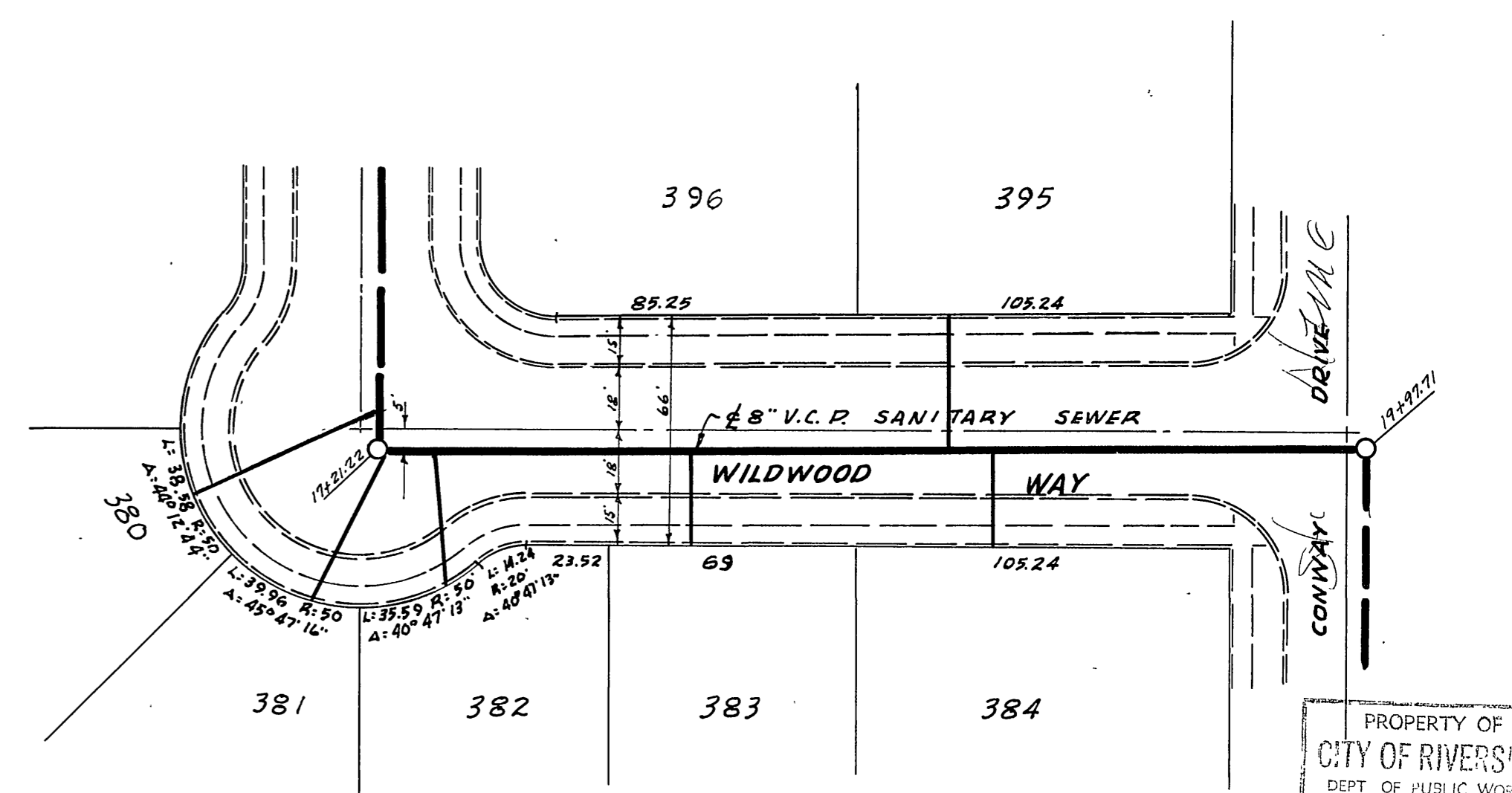
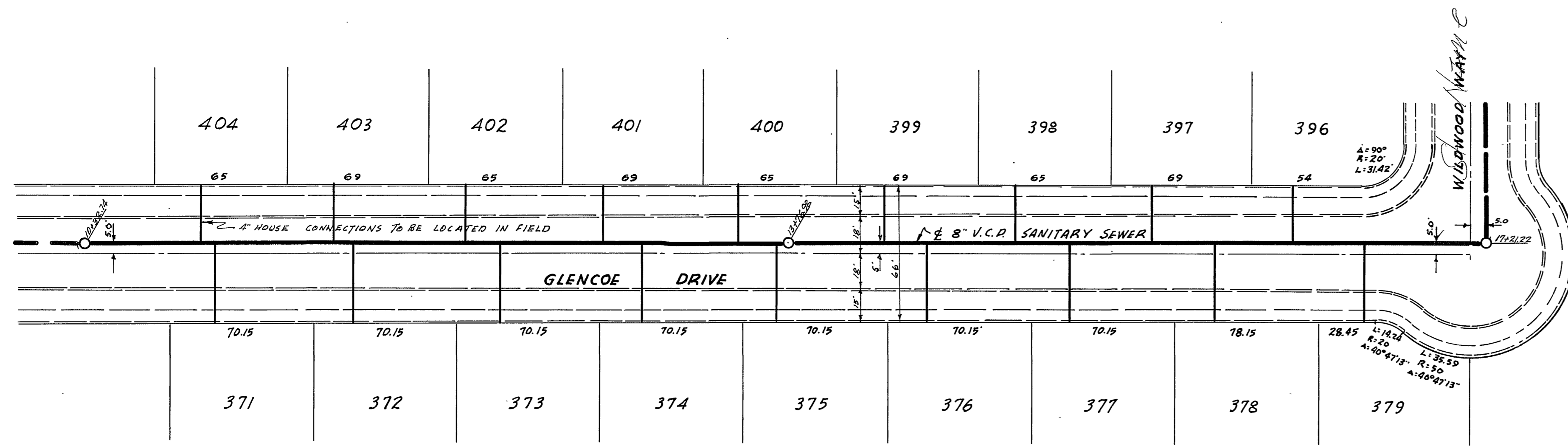
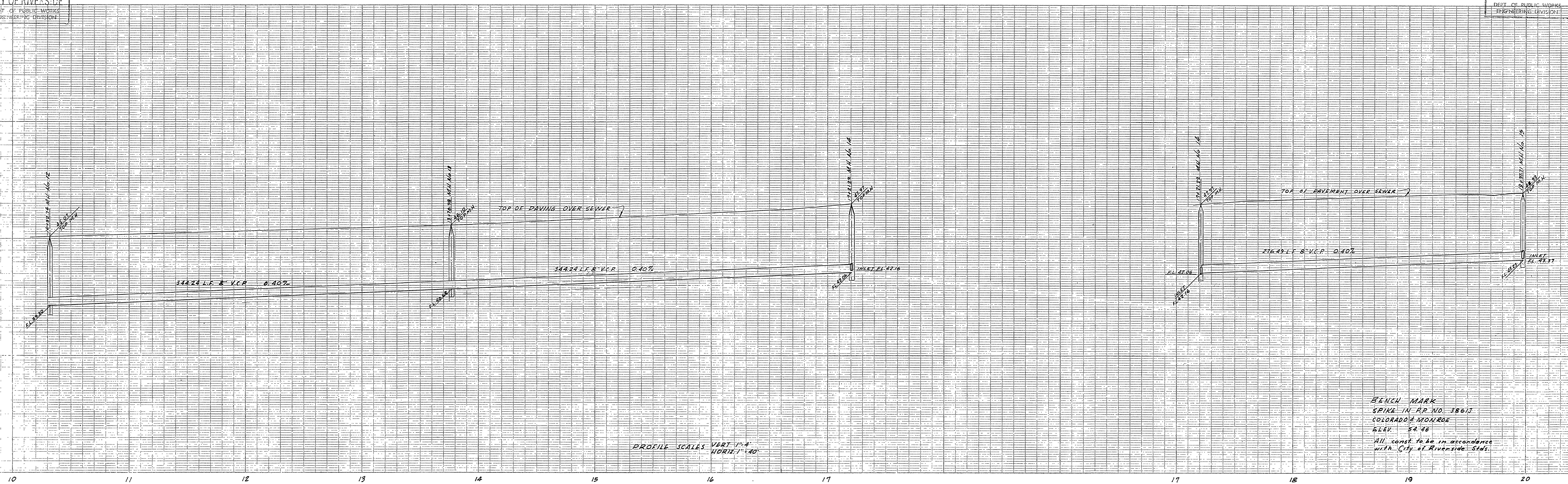
CITY OF RIVERSIDE, CALIFORNIA  
DEPARTMENT OF PUBLIC WORKS

SEWER PLAN & PROFILE  
BROCKTON HEIGHTS NO. 6  
GLENCOE DRIVE  
MONTICELLO NLY TO STA. 10+32.74  
HORIZ. SCALE 1" = 40' VERT. SCALE 1" = 4'

APPROVED BY  
*[Signature]*  
Director of Public Works  
DATE *[Signature]* 11-19-57

NO. **S-81**  
SHEET 3 OF 5





L. FREDERICK PACK - CIVIL ENGR.  
R.E. NO. 7448  
COVINA, CALIFORNIA  
APPROVED BY *[Signature]* DATE 3-21-57

CITY OF RIVERSIDE, CALIFORNIA  
DEPARTMENT OF PUBLIC WORKS

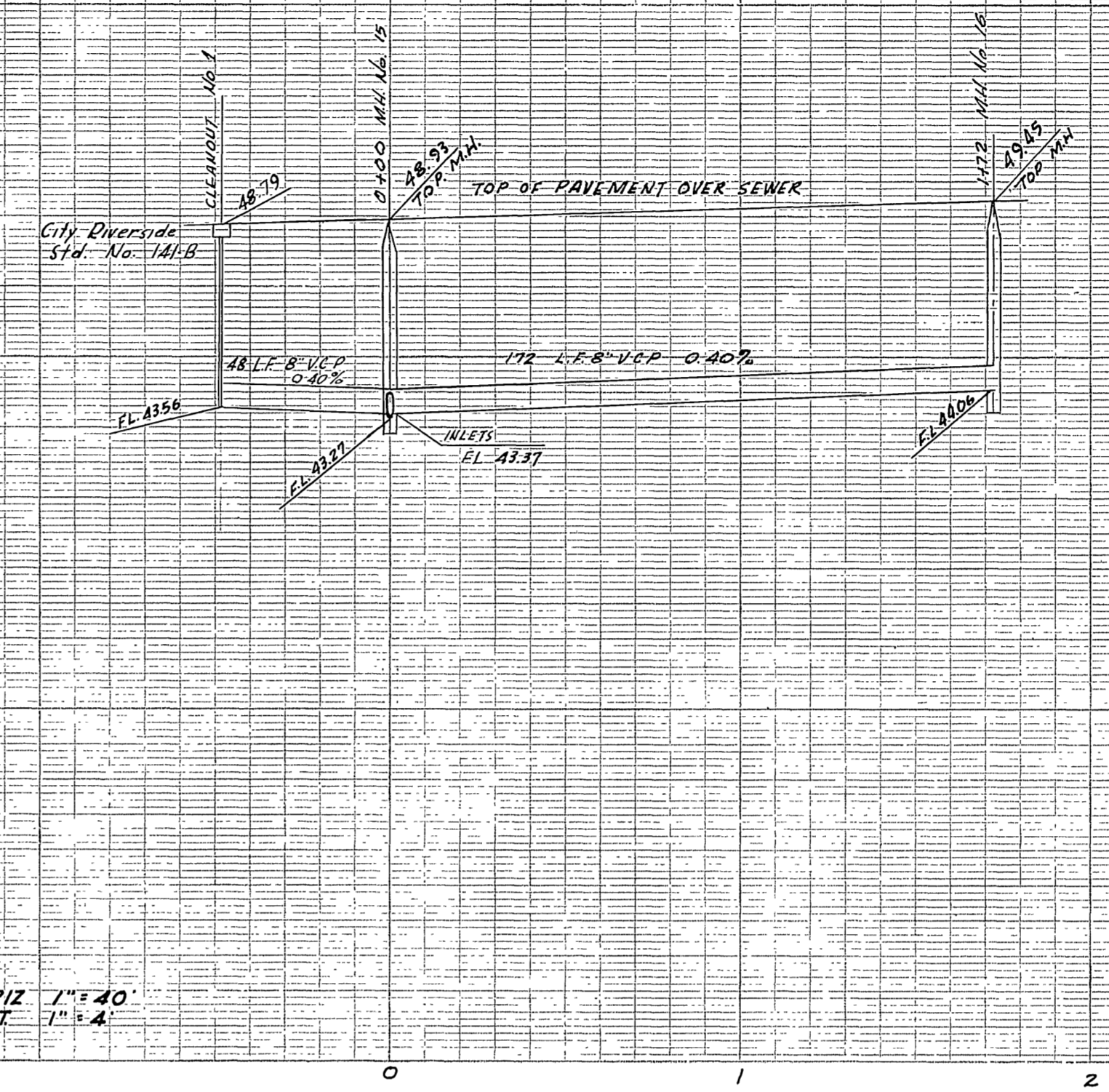
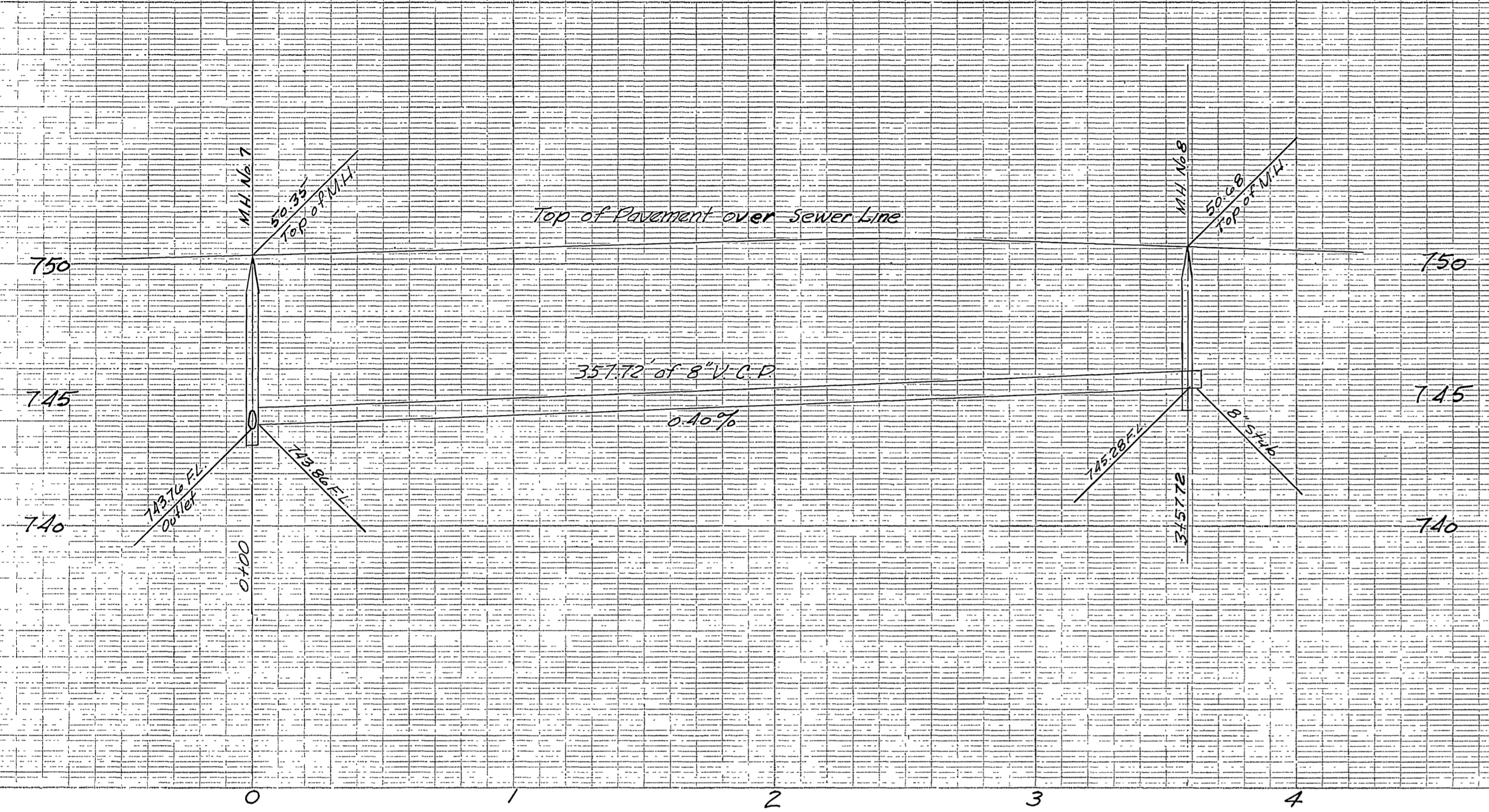
SEWER PLAN & PROFILE  
BROCKTON HEIGHTS NO. 6  
GLENCOE DRIVE AND WILLOW WAY  
STA. 10+32.74 TO 19+97.71

HORIZ. SCALE 1"=40' VERT. SCALE 1"=4'

APPROVED BY *[Signature]*  
Director of Public Works  
DATE April 11, 1957

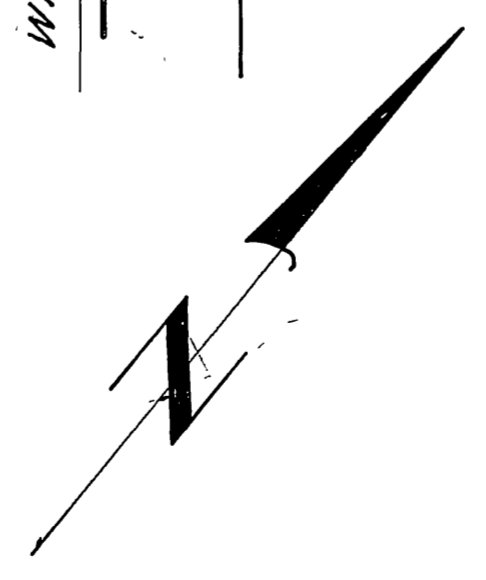
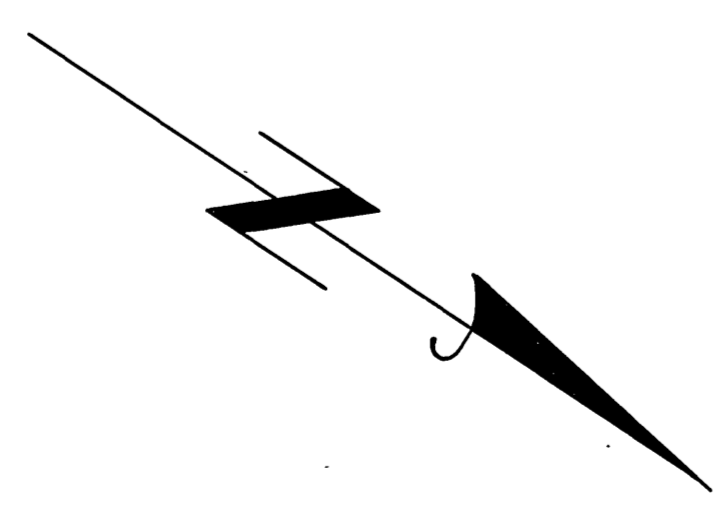
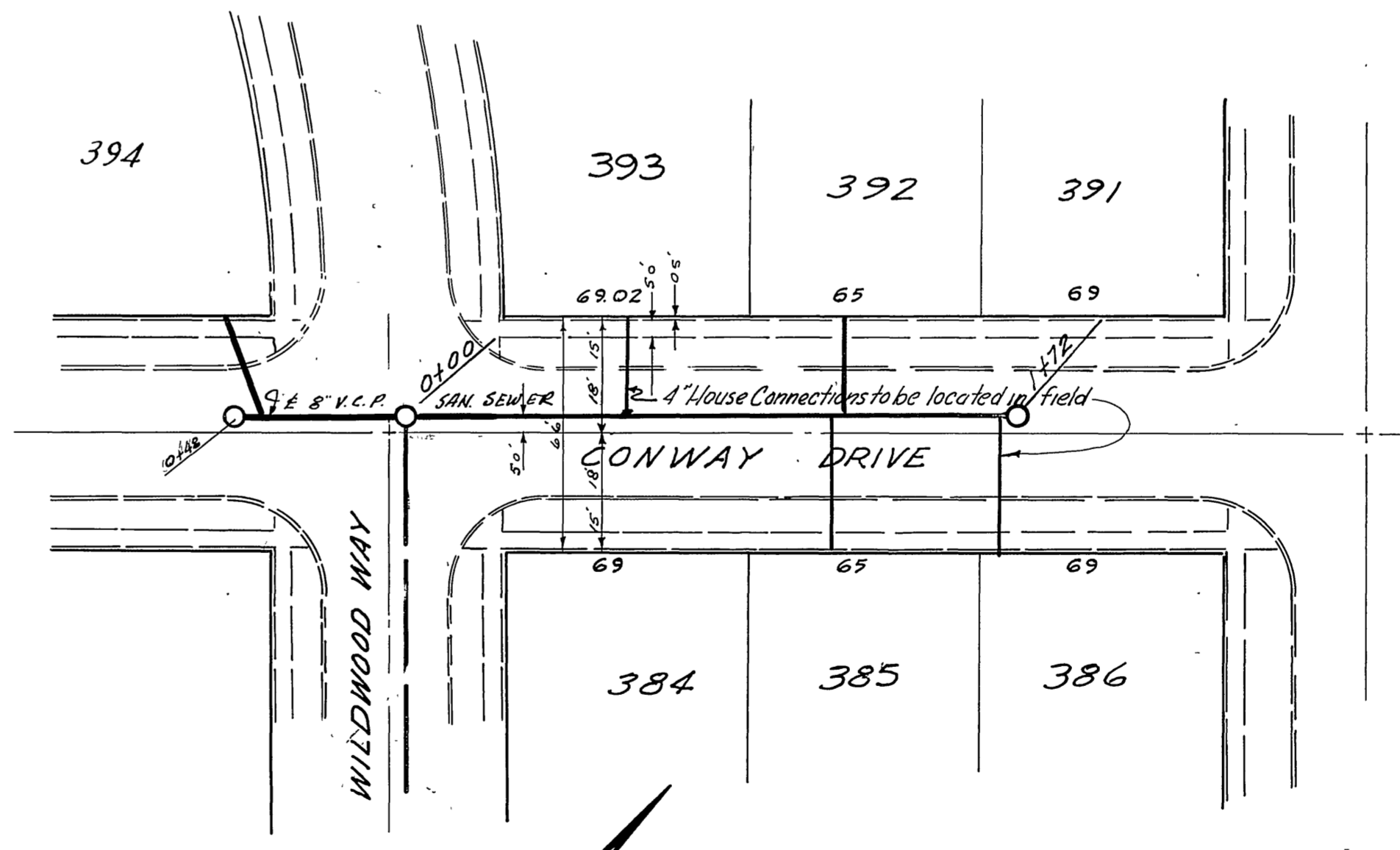
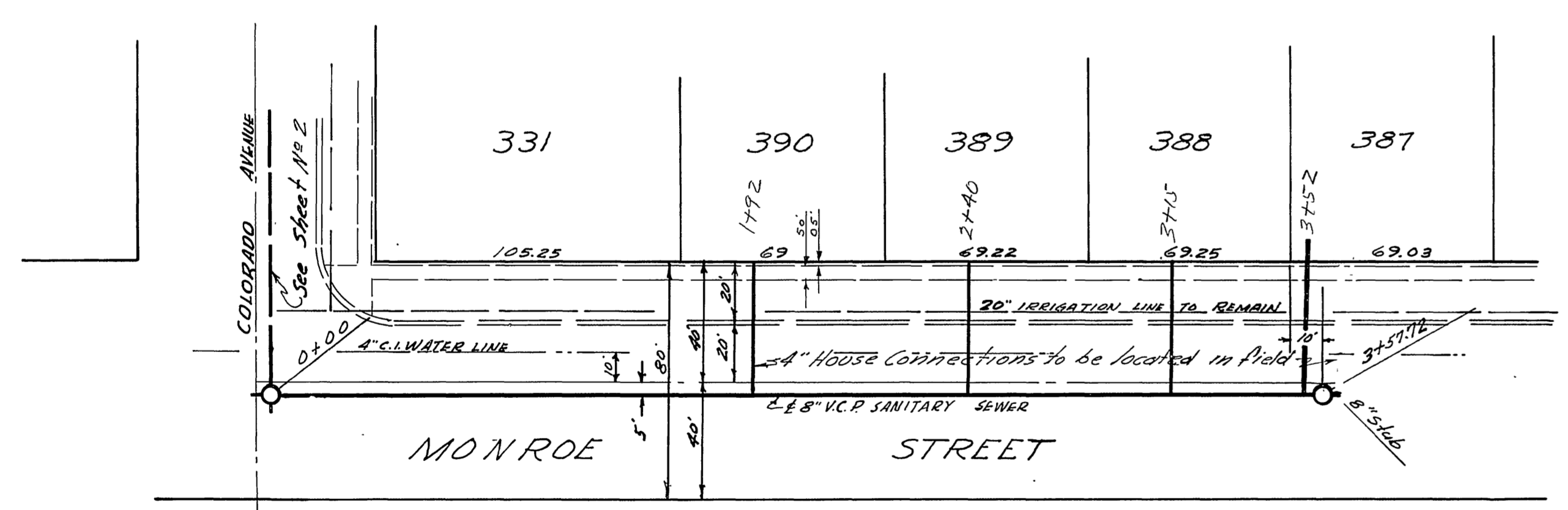
NO. S-81

SHEET 4 OF 5



**BENCHMARK:**  
Spike in P.P. #3861-J,  
Colorado & Monroe  
Elev. = 734.56

All const. to be in accordance  
with City of Riverside Std.



L. FREDERICK PACK - CIVIL ENGR.  
R.E. NO. 7448  
COVINA, CALIFORNIA  
APPROVED BY *[Signature]* DATE 3-21-57

CITY OF RIVERSIDE, CALIFORNIA  
DEPARTMENT OF PUBLIC WORKS

SEWER PLAN & PROFILE  
BROCKTON HEIGHTS NO. 6

MONROE ST. - COLORADO W'LY TO STA. 3+57.12  
CONWAY DRIVE - WILDWOOD WAY to 1472' E'LY.

HORIZ. SCALE 1" = 40' VERT. SCALE 1" = 4'

APPROVED BY *[Signature]* NO. **S-81**  
Dir. of Public Works  
DATE *April 11, 1957* SHEET 5 OF 5

Reimb. Contract #23