

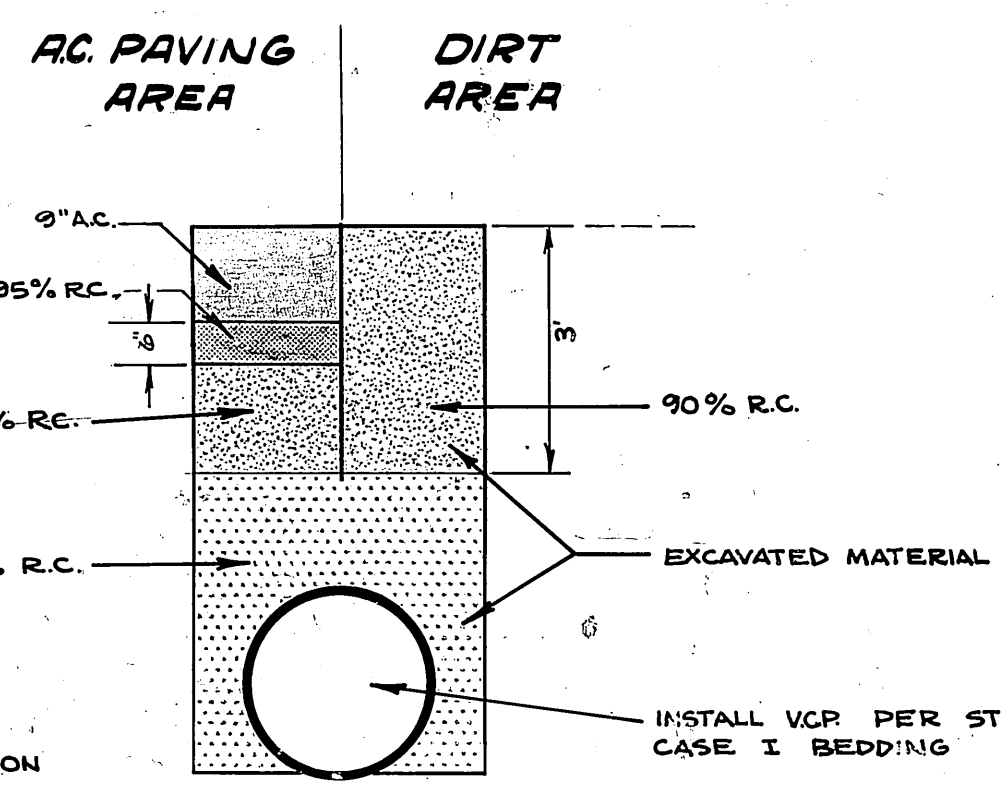
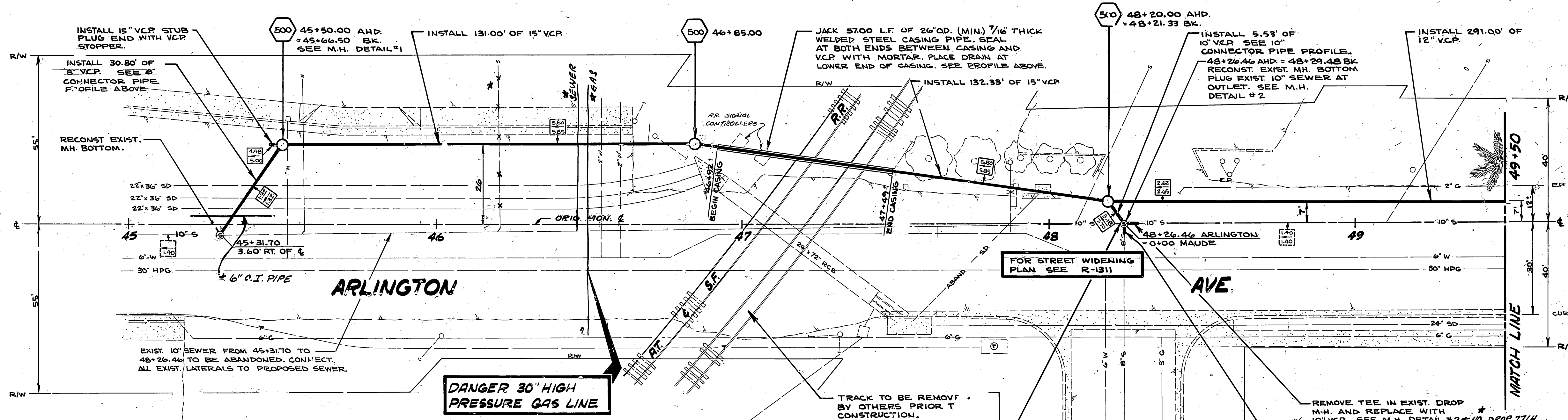
8" CONNECTOR PIPE PROFILE
STA. 45+31.70 TO 45+46.50

10" CONNECTOR PIPE PROFILE
STA. 48+20.00 TO 48+29.48

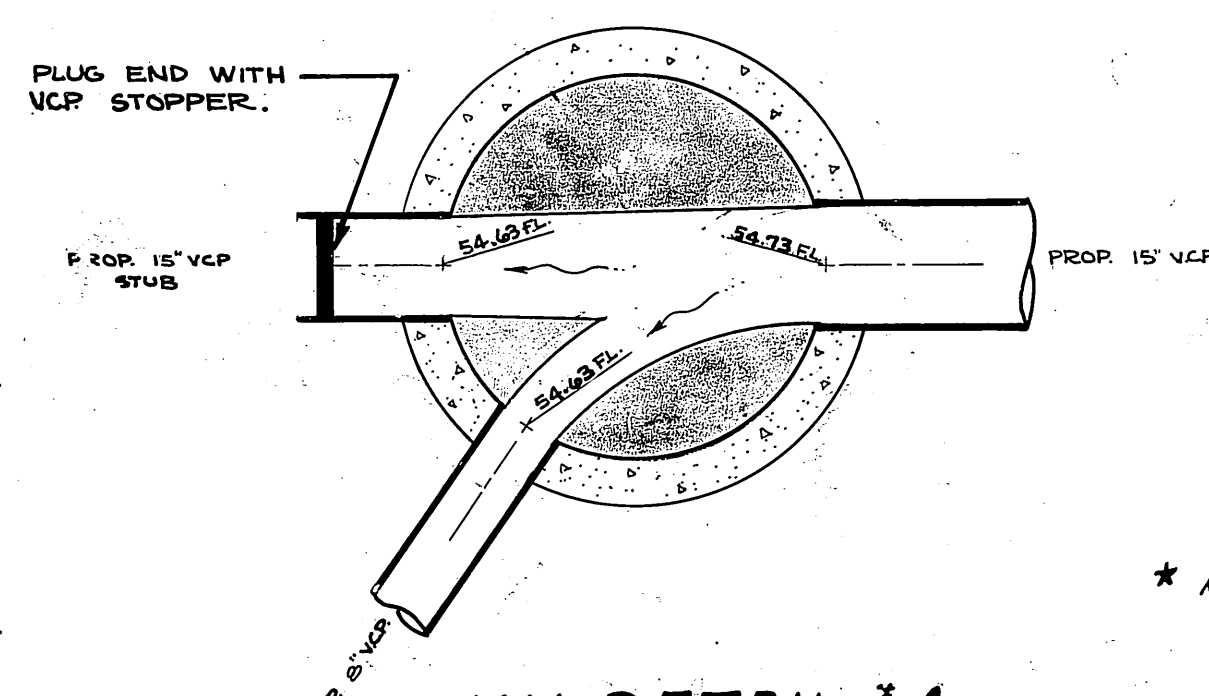
FB 945/1
FB 813/37-78
B.M. PK. NAIL IN E. C.S.
MAUDE ST. 125+5
OF S. ARLINGTON AVE.
ELEV. 847.70

CONSTRUCTION NOTES

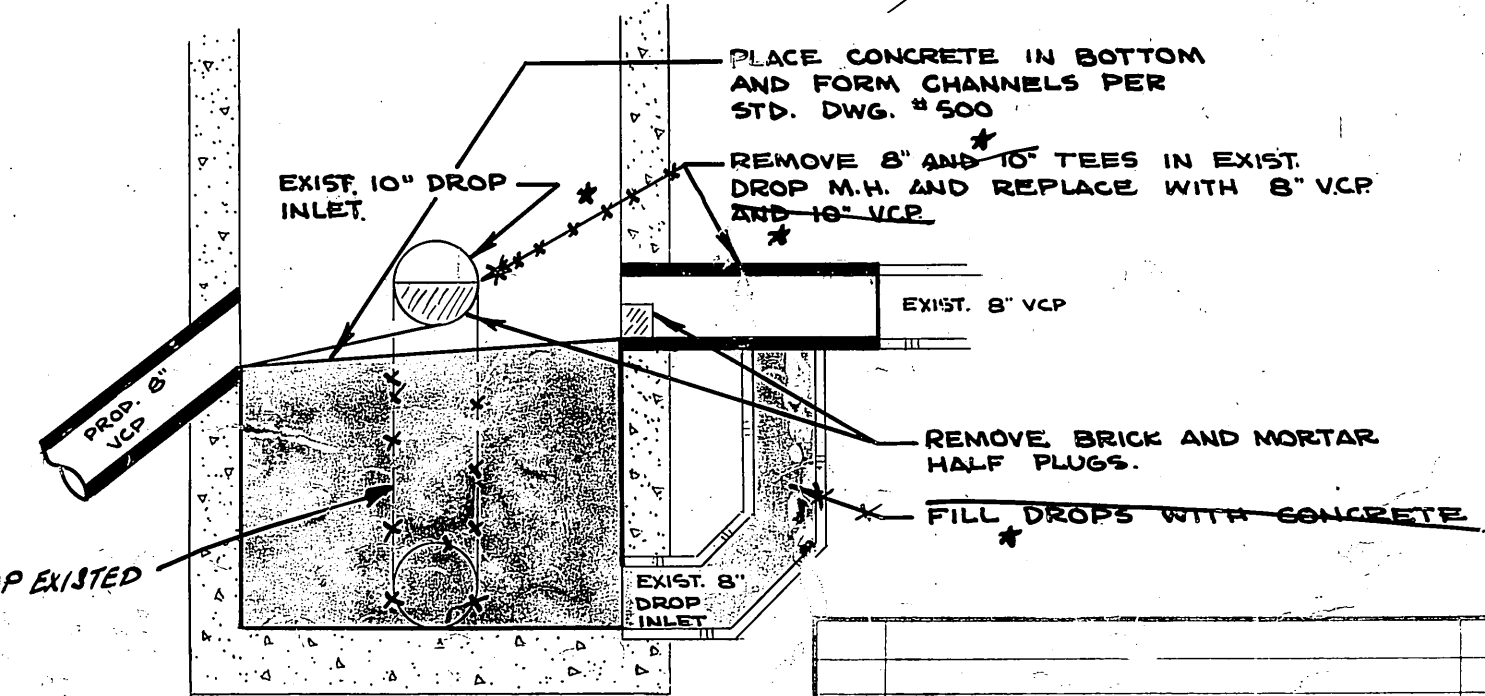
- INDICATES AN UNDERGROUND UTILITY AT AN UNKNOWN DEPTH. UTILITY NOT IN CONFLICT WITH SEWER.
- DESIGN FLOW IN C.S. INDICATES AMOUNT OF FLOW AND DIRECTION OF FLOW FOR EXIST. AND PROPOSED SEWERS.
FULL PIPE FLOW C.S.
- CONSTRUCT MAN O.I.E. PER STD. DWG. 500 AS INDICATED BY: 500 0+00.00
- PIPE SHALL BE VCP INSTALLED PER STD. DWG. 452, CASE I, AND TYPICAL SECTION ON THIS SHEET.
- ONLY SEWER LATERALS IN CONFLICT WITH NEW RELIEF SEWER SHALL BE CONNECTED TO IT PER STD. DWG. 562, EXCEPT ALL SEWER LATERALS SET STA. 45+31.70 AND 48+26.46 WHICH SHALL BE CONNECTED TO NEW SEWER.
- WHERE THE PROPOSED SEWER CROSSES A WATER MAIN THE CONTRACTOR SHALL ENCASE THE SEWER OR THE WATER MAIN PER SECTION 306-2.11, "CONCRETE BEDDING AT WATER MAIN CROSSINGS" OF THE SPECIAL PROVISIONS.
- AC REPLACEMENT PAVING SHALL BE PER TYPICAL TRENCH SECTION BELOW AND PROFILE ABOVE.



TYPICAL SECTION
NO SCALE



M.H. DETAIL #1
45+50.00
SCALE 1" = 2'



M.H. DETAIL #2
48+26.46
SCALE 1" = 2'

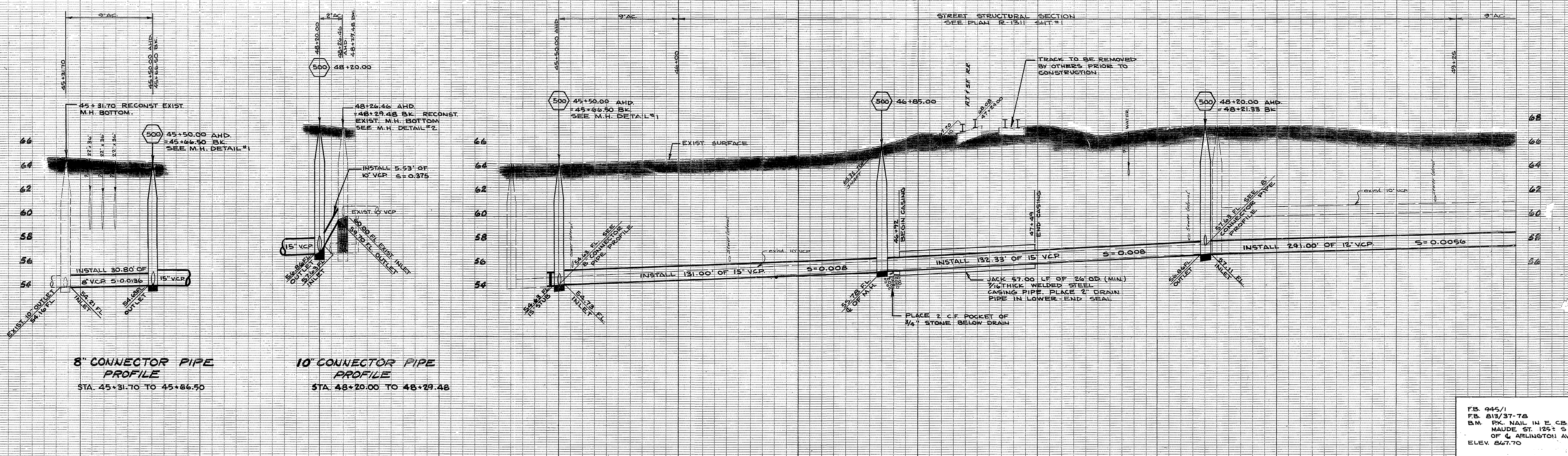
CITY OF RIVERSIDE, CALIFORNIA
DEPARTMENT OF PUBLIC WORKS

APPROVED BY	DATE	APPROVED BY	DATE
PRINCIPAL ENGINEER			
PARK DEPARTMENT		STATION OF WORKS	
TRAFFIC DIVISION			
DESIGNED BY	DRAWN BY	CHECKED BY	

ARLINGTON AVE. RELIEF SEWER

S-812

HORIZ. SCALE: 1" = 20' VERT. SCALE: 1" = 4'



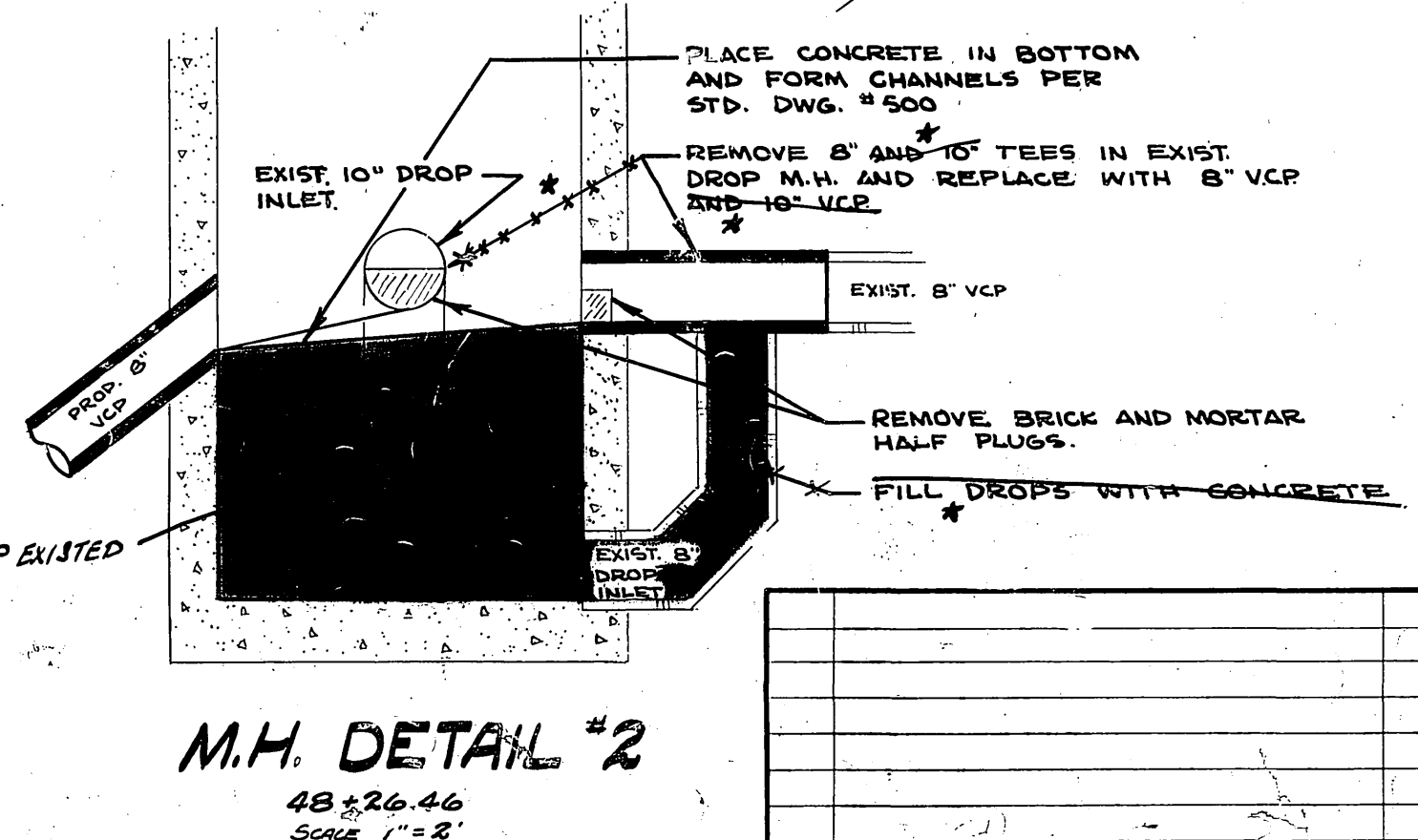
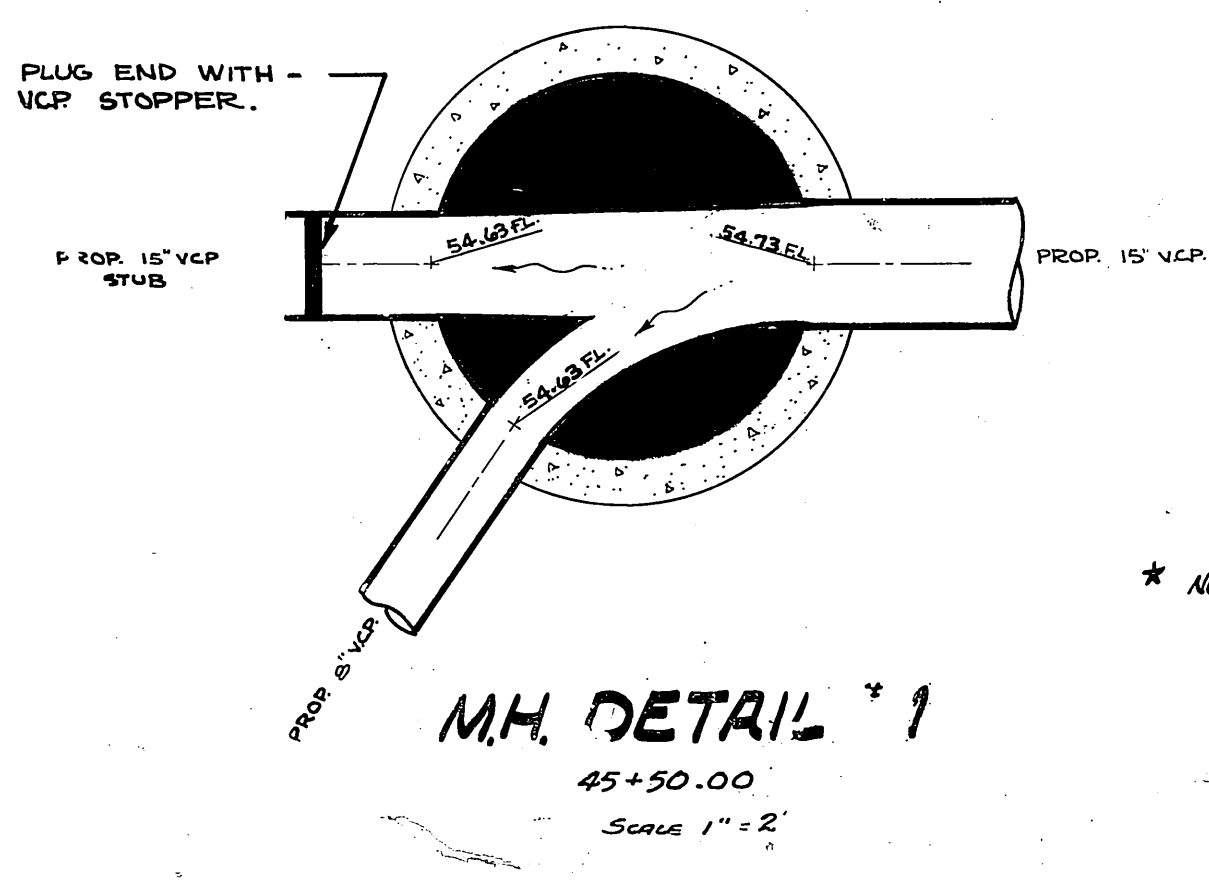
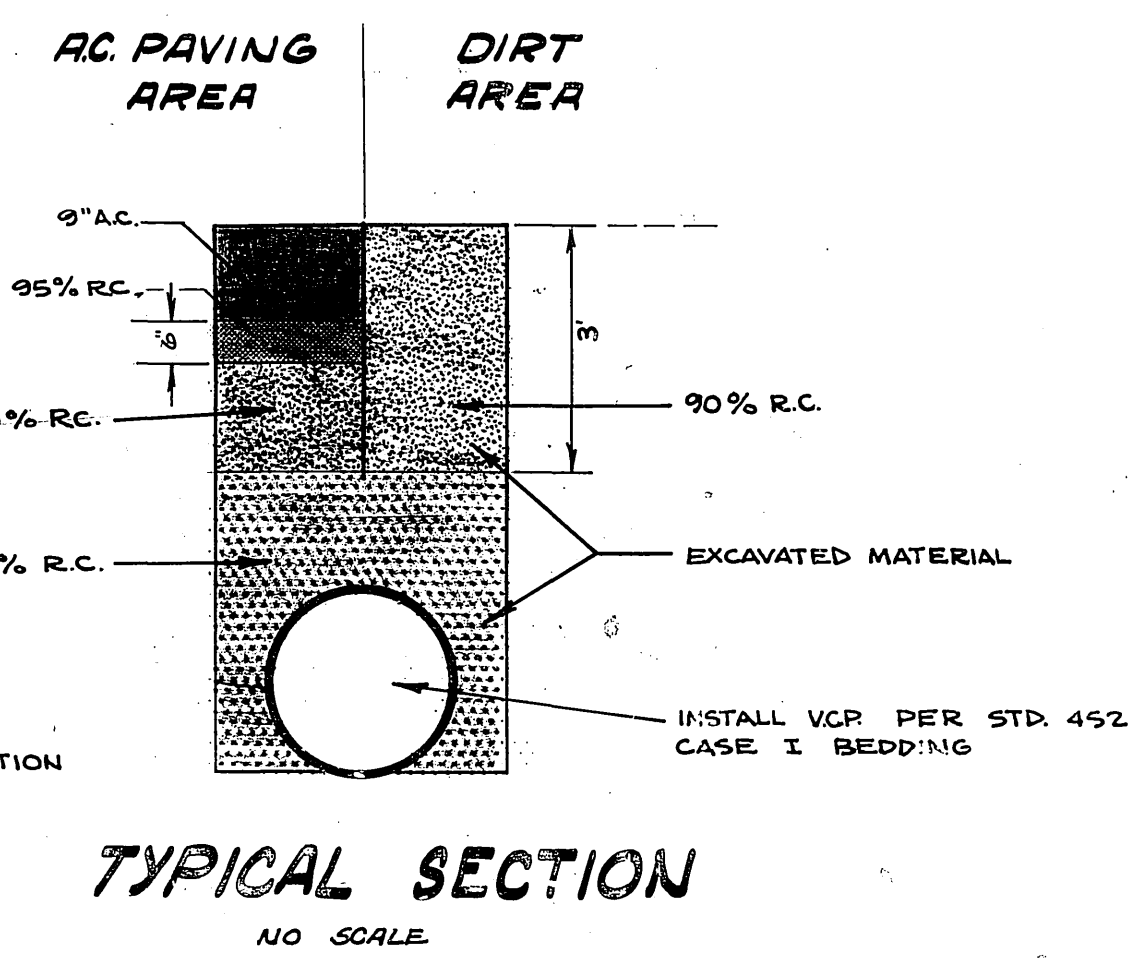
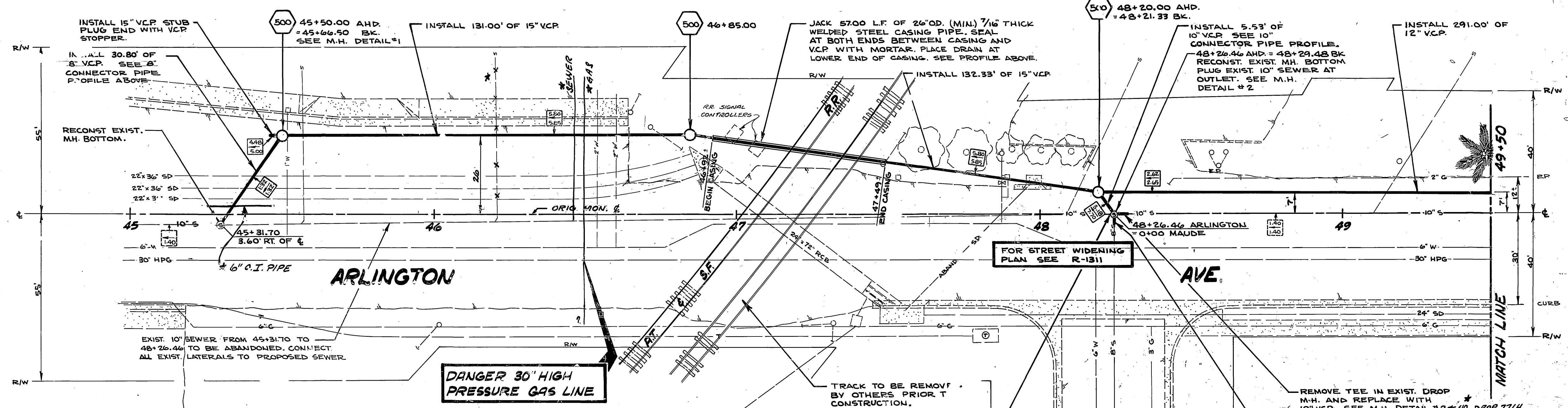
8" CONNECTOR PIPE PROFILE
STA. 45+31.70 TO 45+66.50

10" CONNECTOR PIPE PROFILE
STA. 48+20.00 TO 48+29.48

FB. 845/1
FB. 813/37-78
B.M. PK. NAIL IN E. CB.
OF 4 ARLINGTON AVE.
ELEV. 847.70

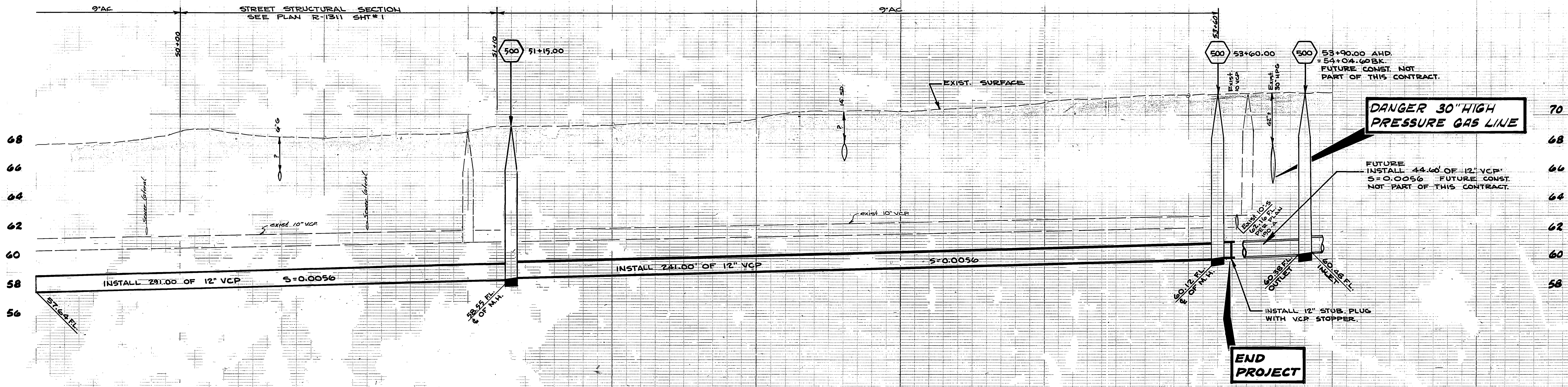
CONSTRUCTION NOTES

- INDICATES AN UNDERGROUND UTILITY AT AN UNKNOWN DEPTH. UTILITY NOT IN CONFLICT WITH SEWER.
- DESIGN FLOW IN CFS. DIRECTION OF FLOW AND DIRECTION OF FLOW FOR FULL PIPE FLOW CFS. INDICATES AMOUNT OF FLOW AND DIRECTION OF FLOW FOR EXIST. AND PROPOSED SEWERS.
- CONSTRUCT MAN O/E PER STD. DWG. 500 AS INDICATED BY: 500 0+00.00
- PIPE SHALL BE L.C.P. INSTALLED PER STD. DWG. 452, CASE I, AND TYPICAL SECTION ON THIS SHEET.
- ONLY SEWER LATERALS IN CONFLICT WITH NEW RELIEF SEWER SHALL BE CONNECTED TO IT PER STD. DWG. 562, EXCEPT ALL SEWER LATERALS SET STA. 45+31.70 AND 48+26.46 WHICH SHALL BE CONNECTED TO NEW SEWER.
- WHERE THE PROPOSED SEWER CROSSES A WATER MAIN THE CONTRACTOR SHALL ENCASE THE SEWER OR THE WATER MAIN PER SECTION 306-2.11, CONCRETE BEDDING AT WATER MAIN CROSSINGS, OF THE SPECIAL PROVISIONS.
- AC REPLACEMENT PAVING SHALL BE PER TYPICAL TRENCH SECTION BELOW AND PROFILE ABOVE.

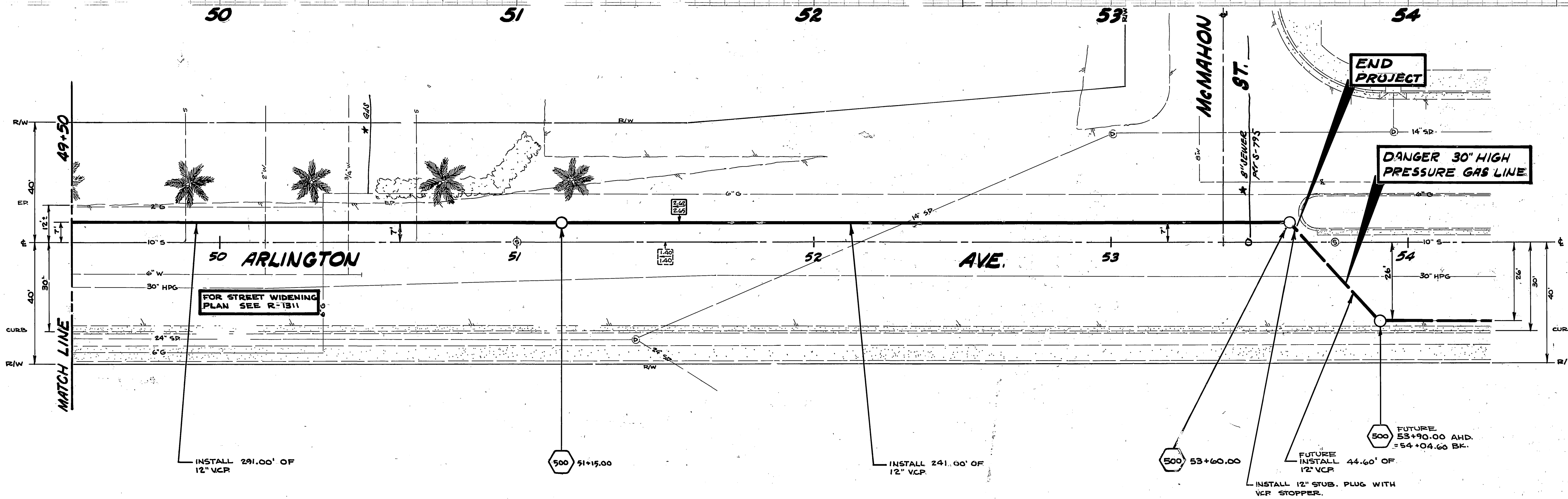


CITY OF RIVERSIDE, CALIFORNIA DEPARTMENT OF PUBLIC WORKS		PROJECT NO. 562
APPROVED BY: [Signature] PRINCIPAL ENGINEER PARK DEPARTMENT TRAFFIC DIVISION	APPROVED BY: [Signature] DIRECTOR OF PUBLIC WORKS	ARLINGTON AVE. RELIEF SEWER
DESIGNED BY: [Signature]	DRAWN BY: [Signature]	
REVISIONS		SHEET 1
APPR. DATE		NO.
CHECKED BY: [Signature]		HORIZ. SCALE: 1" = 20'
DRAWN BY: [Signature]		VERT. SCALE: 1" = 2'

* AS BUILT, APR. 24, 1972 JJJ

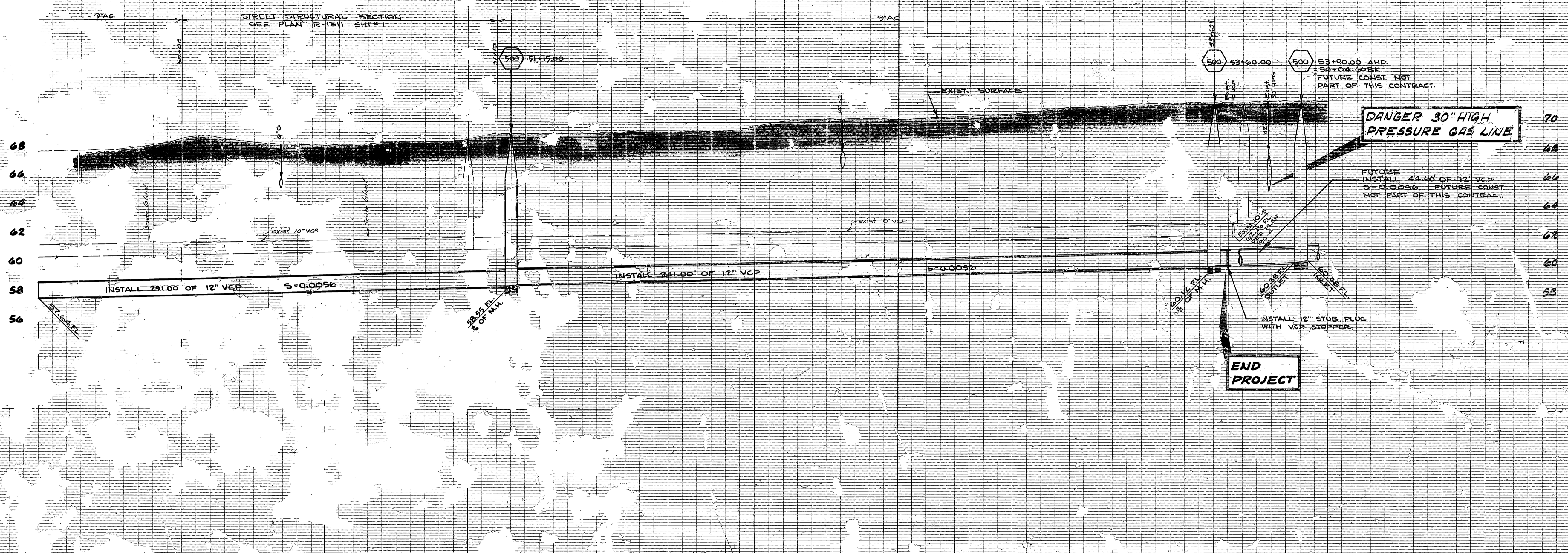


FB 945/1
F.B. 813/37-78
B.M. PK. NAIL IN E. CB.
MAUDE ST. 125' S
OF G. ARLINGTON AVE.
ELEV. 867.70

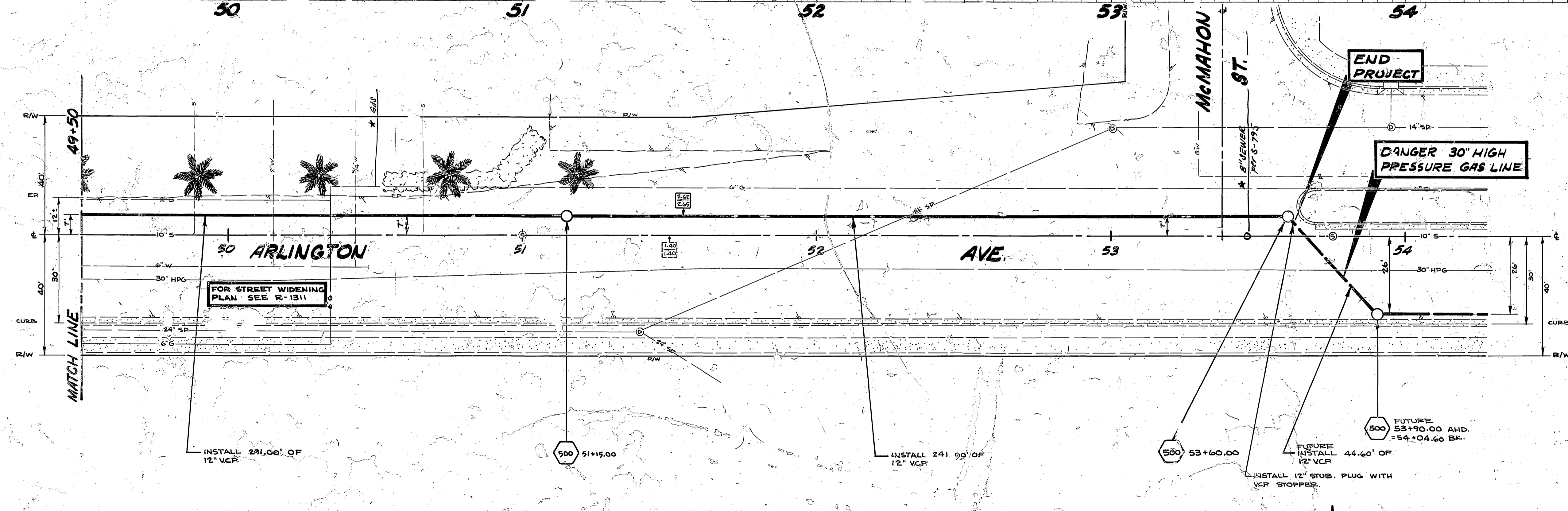


* AS BUILT, APR. 24, 1972 JW

CITY OF RIVERSIDE, CALIFORNIA DEPARTMENT OF PUBLIC WORKS		PROJECT NO. 562
APPROVED BY: [Signature] PRINCIPAL ENGINEER DATE: 7/10/71		ARLINGTON AVE. RELIEF SEWER
DESIGNED BY: [Signature] CHECKED BY: [Signature]		S-812 SHEET 2 OF 2
SCALE: 20' HORIZONTAL, 1" = 4' VERTICAL		FILE NO.



FB 945/1
 FB 813/37-78
 B.M. PK. NAIL IN E. CB.
 MAUDE ST. 125' S
 OF G. ARLINGTON AVE.
 ELEV. 847.70



* AS BUILT, APR. 24, 1972 JW

CITY OF RIVERSIDE, CALIFORNIA DEPARTMENT OF PUBLIC WORKS		ARLINGTON AVE. RELIEF SEWER	PROJECT NO. 562
APPROVED BY: [Signature] PRINCIPAL ENGINEER DATE: 7/20/71 DESIGNED BY: [Signature] DRAWN BY: [Signature] CHECKED BY: [Signature]			SHEET 2 OF 2 SCALE: 1" = 20' FILE NO.