

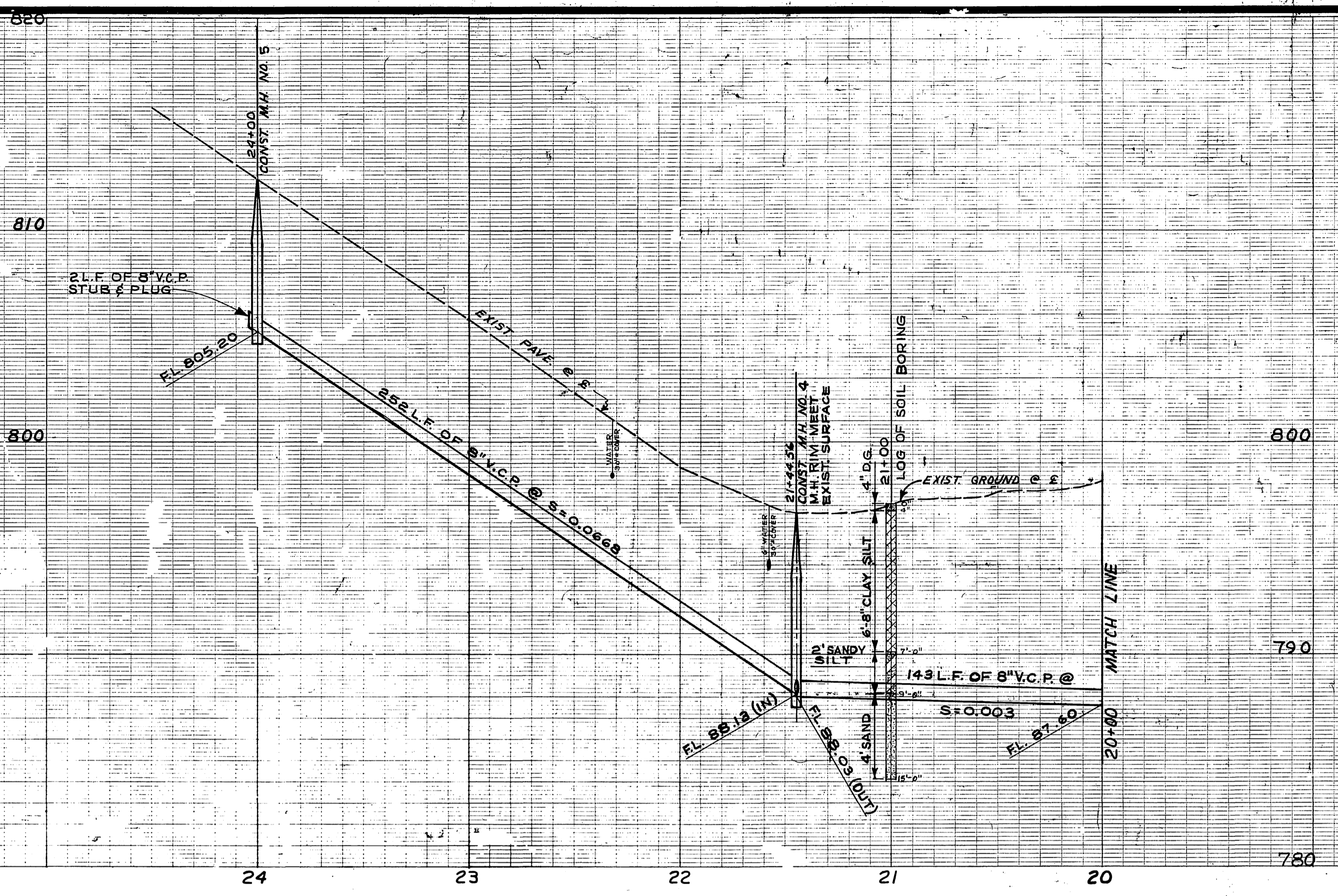
NOTES:
 Grades are adapted from the City of Riverside, Dept. of Public Works drawings R-223 Sheets #1 and #2 for street profile and drawing S-379 sheet #1 for existing sewer.

B.M. - City of Riverside Datum
 R.R. Spike in pole No. 15107-J @
 N.E. Corner of Industrial Ave.
 & Fremont St. F.B. 385/71
 Elevation 777.10
 (Note: This B.M. is not on current
 city datum. City Elev. = 776.97)
 Per C.R.F.B. 930/24

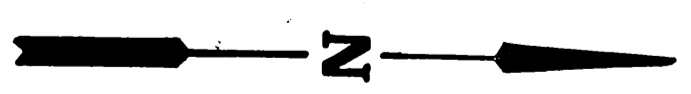
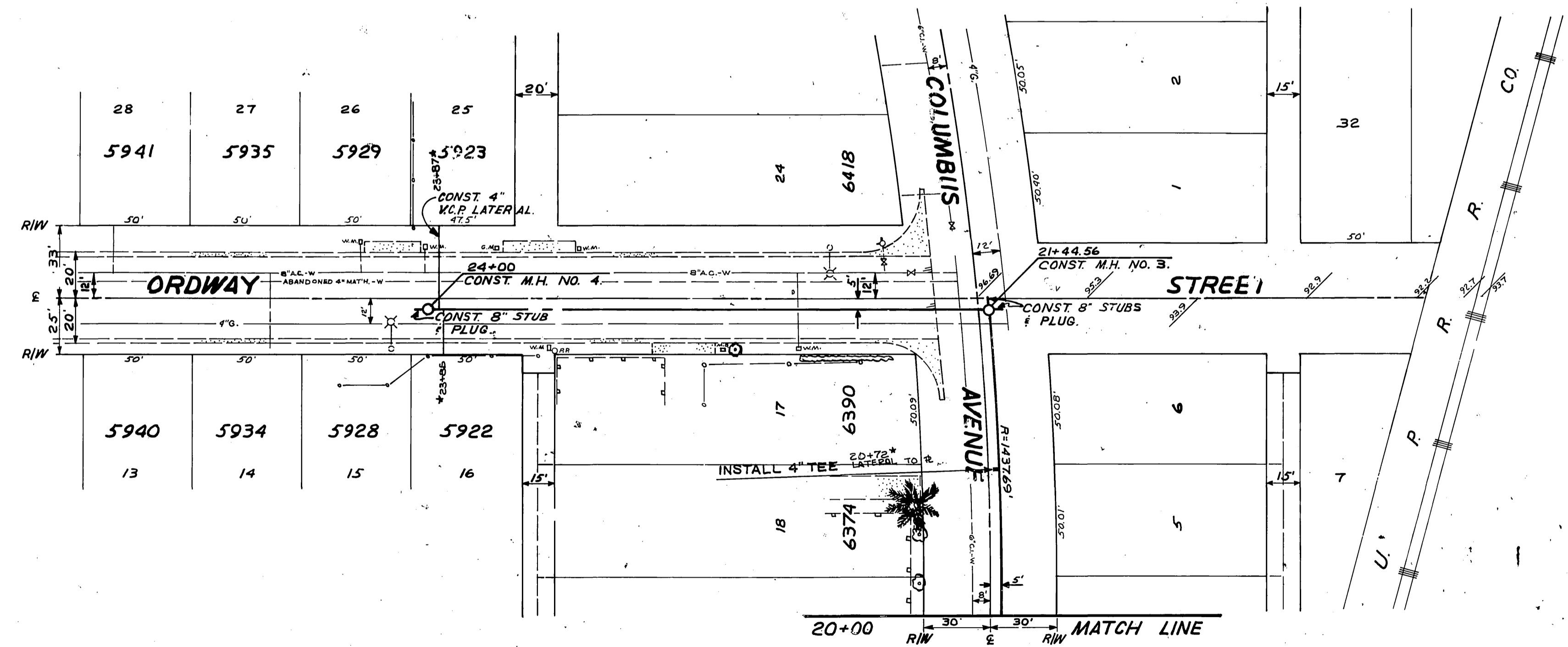
F.B. 961/33
 B.M.: H-4-B. PK. NAIL & TAG IN
 NW CORNER RETURN AT
 JURUPA & FREMONT.
 ELEV.: 790.24

- GENERAL NOTES:**
- All manholes to be Riverside City Standard No. 500 modified. Maximum vertical spacing of steps in all manholes shall be 12 inches.
 - All construction shall be in accordance with the Standard Specifications for Public Works Construction 1970 Edition and Standard Drawings of the City of Riverside, Department of Public Works. Pipe shall be embedded per Case 1 Standard Drawing No. 452 unless otherwise specified on Plans.
 - Joints shall be Type "F" or "G" as per Standard Specifications.
 - Location of all tees and laterals to be located in field or the direction of the Owner. Avoid conflict with proposed and/or existing facilities.
 - All laterals to be constructed in accordance with Standard Drawing No. 562.
 - Laterals shall be 4" V.C.P. and extended to property line.
 - All stubs at manholes shall be 2' long and plugged.

APPROVED: 3-7-73 WATER DIVISION		J. F. DAVIDSON ASSOCIATES CIVIL ENGINEERS - SURVEYORS - PLANNERS RIVERSIDE, CALIFORNIA APPROVED BY: DATE: 2-16-70 R.E. No. 13644 No. 2704 FOR: Riverside Fish Co. F.B. 100/24		COMPLETE REVISION: 3/10/73		CITY OF RIVERSIDE, CALIFORNIA DEPARTMENT OF PUBLIC WORKS APPROVED BY: OFFICE ENGINEER PARK DEPARTMENT TRAFFIC DIVISION ASSISTANT CITY ENG.		COLUMBUS AVENUE SEWER EXT. NO. 1 COLUMBUS AVE., FROM 150' ELY OF GRIFFITH ST TO 207' WLY OF REPUBLIC ST. HORIZ. SCALE: 1" = 40' VERT. SCALE: 1" = 4' DATE: 11/18/70		PROJECT NO. 32-577-560 S-816 SHEET 1 OF 2 FILE NO. 3392	
-------------------------------------------	--	--------------------------------------------------------------------------------------------------------------------------------------------------------------------------------------------------------	--	-------------------------------	--	---------------------------------------------------------------------------------------------------------------------------------------------------------------------	--	-----------------------------------------------------------------------------------------------------------------------------------------------------------------------------------------------------	--	-------------------------------------------------------------------------	--



RIVERVIEW ADDITION TRACT NO 3



* "AS BUILT" ROB. 8-73

APPROVED:		CITY OF RIVERSIDE, CALIFORNIA DEPARTMENT OF PUBLIC WORKS		COLUMBUS AVENUE SEWER EXT. NO. 1		S-816	
WATER DIVISION		APPROVED BY:	DATE:	APPROVED BY:	DATE:	SHEET 2 OF 2	
DESIGN BY:	DRAWN BY:	TRAFFIC DIVISION CHIEF:	DATE:	DATE:	SCALE: 1" = 40'		