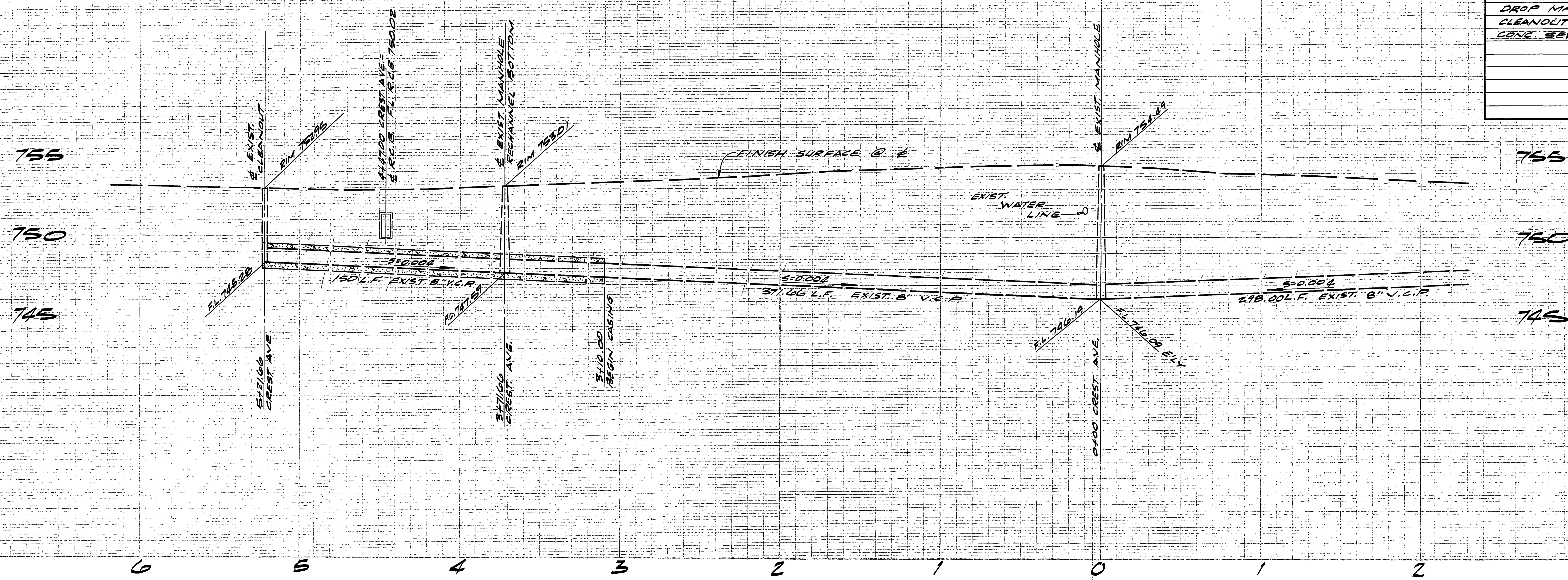


ESTIMATE OF QUANTITIES

ITEM	QUANTITY
SEWER	
8" V.C.P. SEWER MAIN	1,570 L.F.
4" V.C.P. SEWER LATERAL	1,770 L.F.
MANHOLE PER STD. 500	6 EA.
DROP MANHOLE PER STD. 500	1 EA.
CLEANOUT PER STD. 500	2 EA.
CONC. SEWER ENCASMENT	18 L.F.



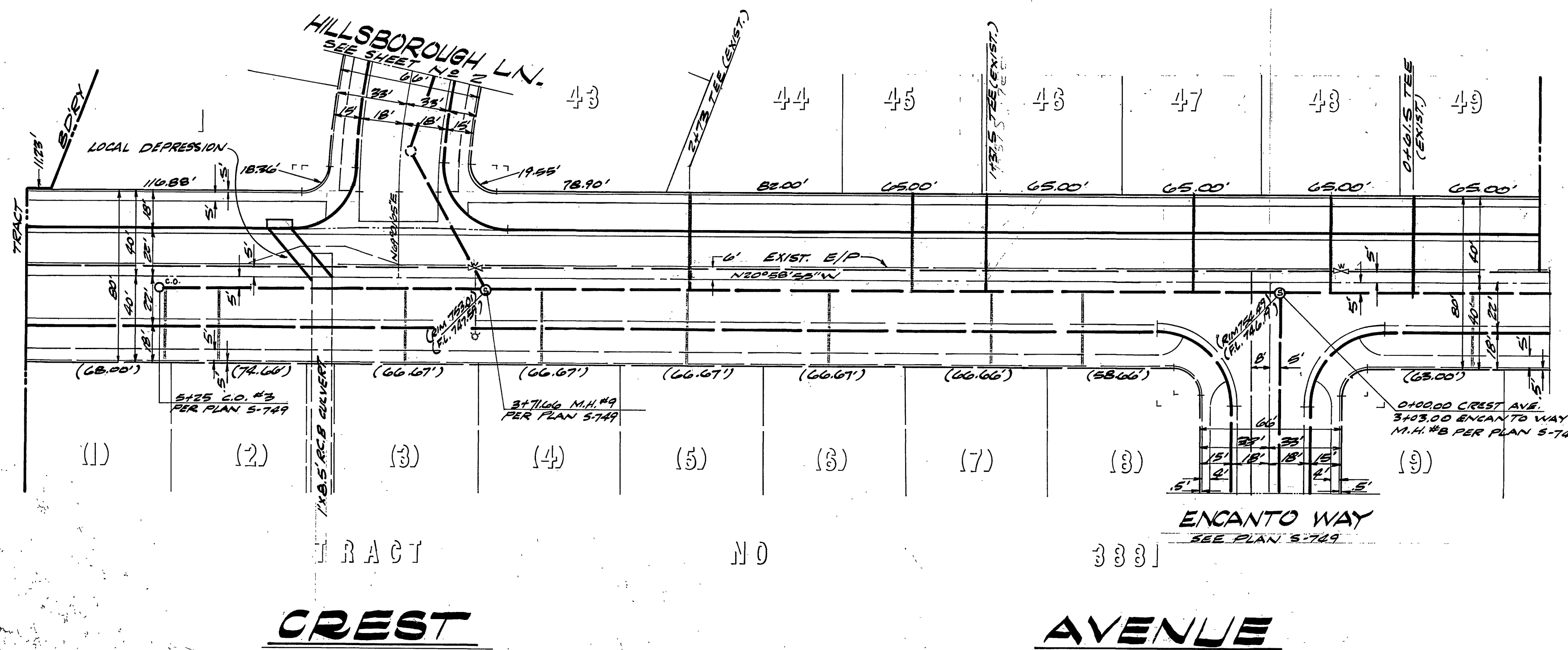
GENERAL NOTES

- CONSTRUCTION SHALL BE IN ACCORDANCE WITH THE CITY OF RIVERSIDE, DEPARTMENT OF PUBLIC WORKS, STANDARD SPECIFICATIONS NO. 601 AND STD. DRAWINGS.
- IT SHALL BE THE RESPONSIBILITY OF THE CONTRACTOR TO CLEAR THE RIGHT-OF-WAY IN ACCORDANCE WITH THE PROVISIONS OF LAW AS IT AFFECTS EACH UTILITY, INCLUDING IRRIGATION LINES AND APPURTENANCES, AND AT NO COST TO THE CITY.
- JOINTS SHALL BE IN CONFORMANCE TO ASTM SPECIFICATION C-425-64, TYPE I OR III, OR TO ASTM SPECIFICATION C-594-66T, (BAND SEAL), WITH CERTAIN EXCEPTIONS OR MODIFICATIONS ON FILE WITH THE CITY ENGINEER.
- LOCATION OF TEES AND LATERALS TO BE DETERMINED BY OWNER.
- ALL STUBS AND LATERALS TO BE CONSTRUCTED IN ACCORDANCE WITH STANDARD DRAWING NO. 562. STUBS SHALL BE FLUGGED AND CAPPED AND SHALL BE 2' LONG.
- MANHOLE FRAMES AND COVERS TO BE SET AT FINISHED STREET GRADE.
- LATERALS TO BE 4" AND EXTENDED TO PROPERTY LINE.
- PRIOR TO CONSTRUCTION OF SEWER, CONTRACTOR IS TO EXPOSE EXISTING SEWER AND CONTACT THE ENGINEER FOR VERIFICATION OF EXISTING ELEVATIONS.
- PIPE SHALL BE BEDDED PER CASE I, STANDARD DRAWING NO. 452, UNLESS OTHERWISE SPECIFIED ON PLANS.

PRIVATE ENGINEER'S NOTICE TO CONTRACTOR

THE EXISTENCE AND LOCATION OF ANY UNDERGROUND UTILITY PIPES OR STRUCTURES SHOWN ON THESE PLANS WERE OBTAINED BY A SEARCH OF THE AVAILABLE RECORDS. APPROVAL OF THESE PLANS BY THE CITY OF RIVERSIDE DOES NOT CONSTITUTE A REPRESENTATION AS TO THE ACCURACY OR COMPLETENESS OF THE LOCATION, OR THE EXISTENCE OR NON-EXISTENCE OF ANY UTILITY PIPE OR STRUCTURE WITHIN THE LIMITS OF THIS PROJECT. THE CONTRACTOR IS REQUIRED TO TAKE ALL DUE PRECAUTIONARY MEANS TO PROTECT THE UTILITY LINES NOT OF RECORD OR NOT SHOWN ON THESE PLANS.

BENCH MARK:
PK NAIL IN EAST CURB
ON TYLER ON E BAYLORD
PRODUCED PER CITY OF
RIVERSIDE F.B. 700/1.
ELEV. 778.21



CREST AVENUE

AVENUE

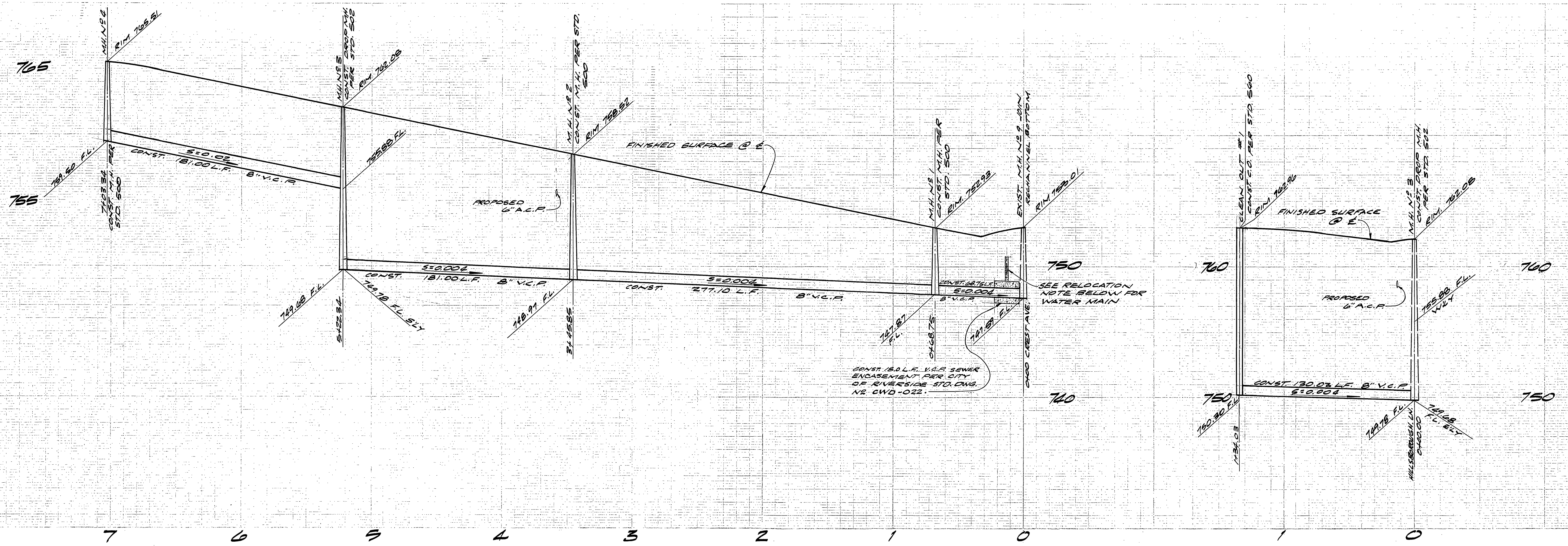
APPROVED BY
Howard L. Brown 11-17-70
CHIEF UTILITIES ENGINEER-WATER DATE

R. M. Galloway & Associates Inc.
CIVIL ENGINEERS & PLANNERS
LAND AND MINERAL SURVEYORS
NEWPORT BEACH/COSTA MESA • SAN FRANCISCO • LOS ANGELES • SAN DIEGO • ALTURA, CALIF. • Prescott, Arizona
Office Building: 1291 Avenida, Costa Mesa, Calif. P.O. Box 1925, Newport Beach, Calif. 92643
APPROVED BY
John K. Mandrell 9-14-70
JOHN K. MANDRELL R.C.E. 13,703 DATE

DESIGNED BY T.R.T. DRAWN BY T.R.T. CHECKED BY E.L.W.

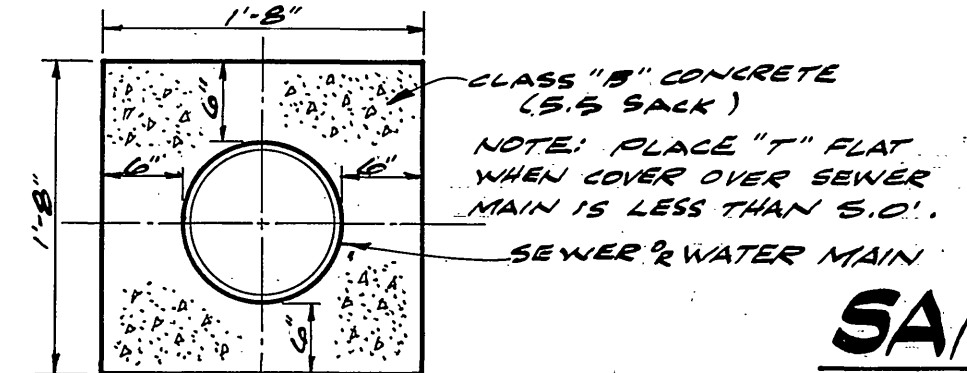
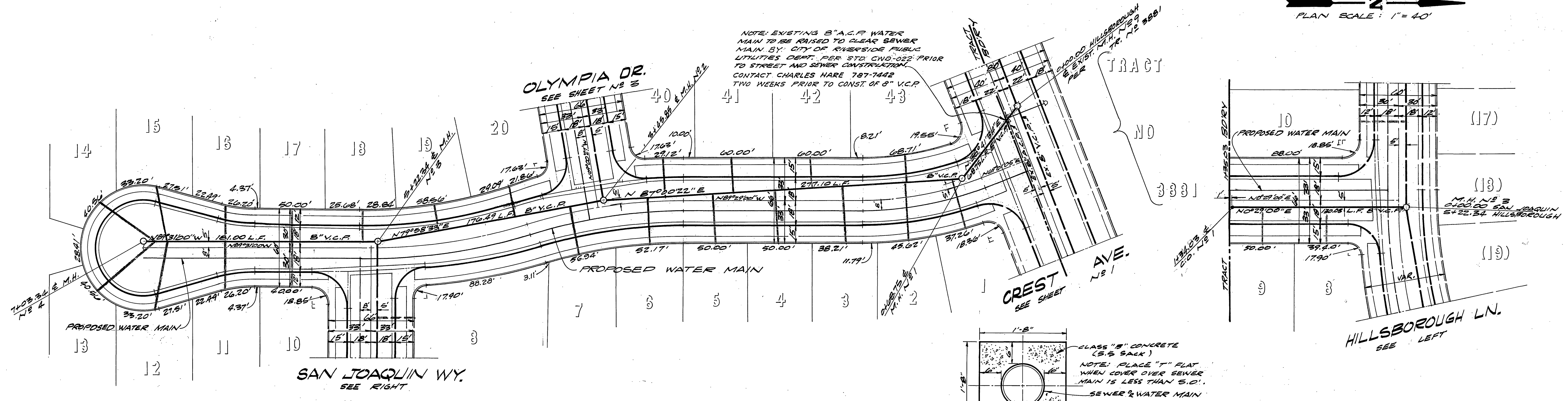
CITY OF RIVERSIDE, CALIFORNIA
DEPARTMENT OF PUBLIC WORKS
APPROVED BY
OFFICE ENGINEER
PARK DEPARTMENT
TRAFFIC DIVISION
ASSISTANT CITY ENG.
BY *[Signature]* DATE 11/20/70

SEWER PLAN & PROFILE
CREST AVENUE
TRACT NO. 4137
PROJECT NO. **S-817**
SHEET **1** OF **3**
HORIZ. SCALE: 1" = 40' VERT. SCALE: 1" = 4' FILE NO.



PLAN SCALE: 1" = 40'

PLAN SCALE: 1" = 40'



ENCASEMENT DETAIL
NOT TO SCALE

Approved by: Water Div.
Howard R. Creamer 11-17-70
Chief Utilities Engineer date

R. M. Galloway & Associates Inc.
CIVIL ENGINEERS & PLANNERS
LAND AND MINERAL SURVEYORS
NEWPORT BEACH/COSTA MESA • SAN FRANCISCO • LOS ANGELES • SAN DIEGO • ALTURA, CALIF. • PRESCOTT, ARIZONA
Galloway Building 179 Calleito, Costa Mesa, Calif. P.O. Box 1995 (714) 546-3662 Newport Beach, Calif. 92663

APPROVED BY *John K. Mandrell* 9-11-70
JOHN K. MANDRELL R.C.E. 13,703 DATE

BENCH MARK:
PK NAIL IN EAST CURB
ON TYLER ON E BAYLARD
PRODUCED PER CITY OF
RIVERSIDE F.B. 700/11.
ELEV. 778.21

CITY OF RIVERSIDE, CALIFORNIA
DEPARTMENT OF PUBLIC WORKS

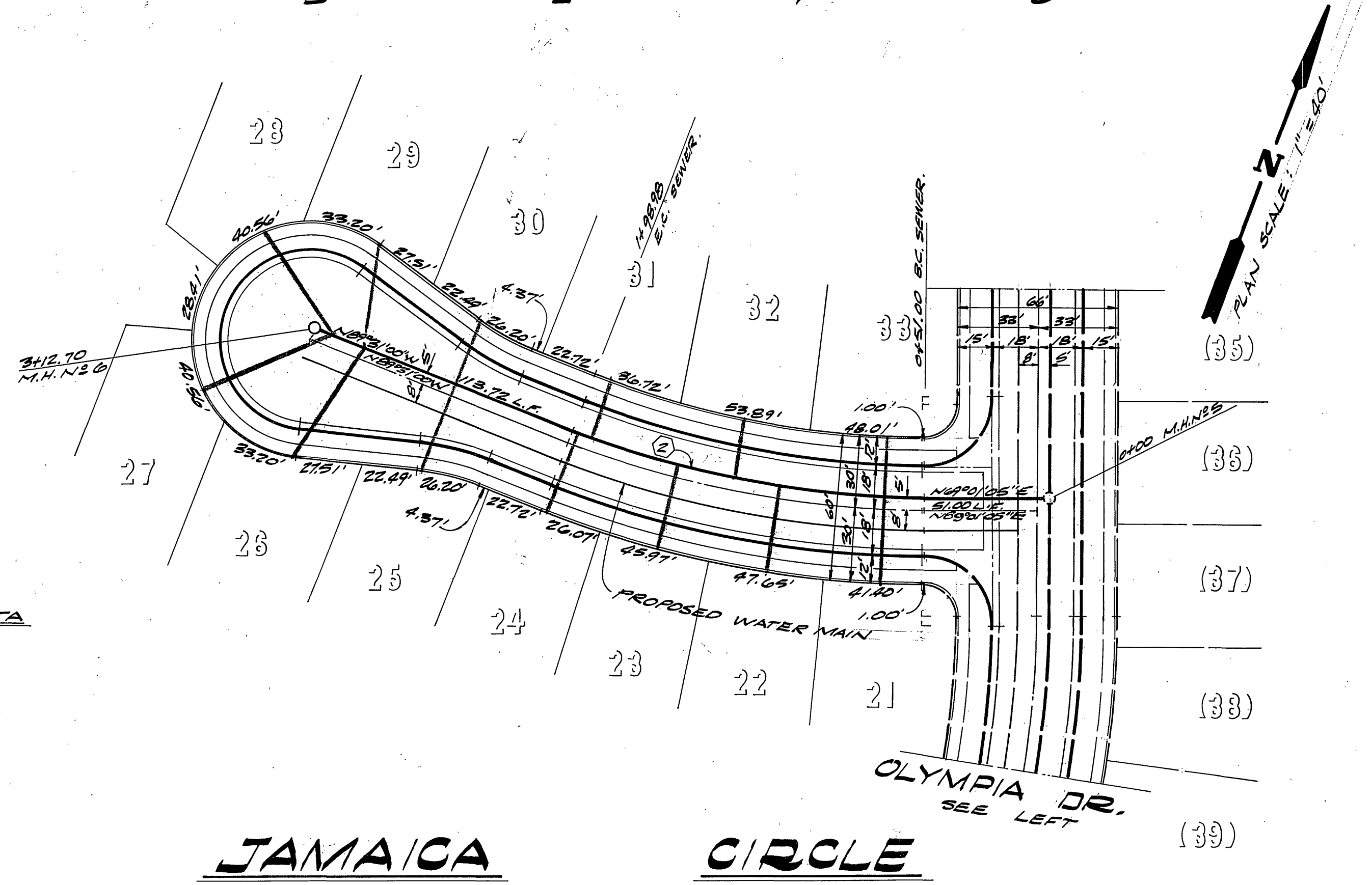
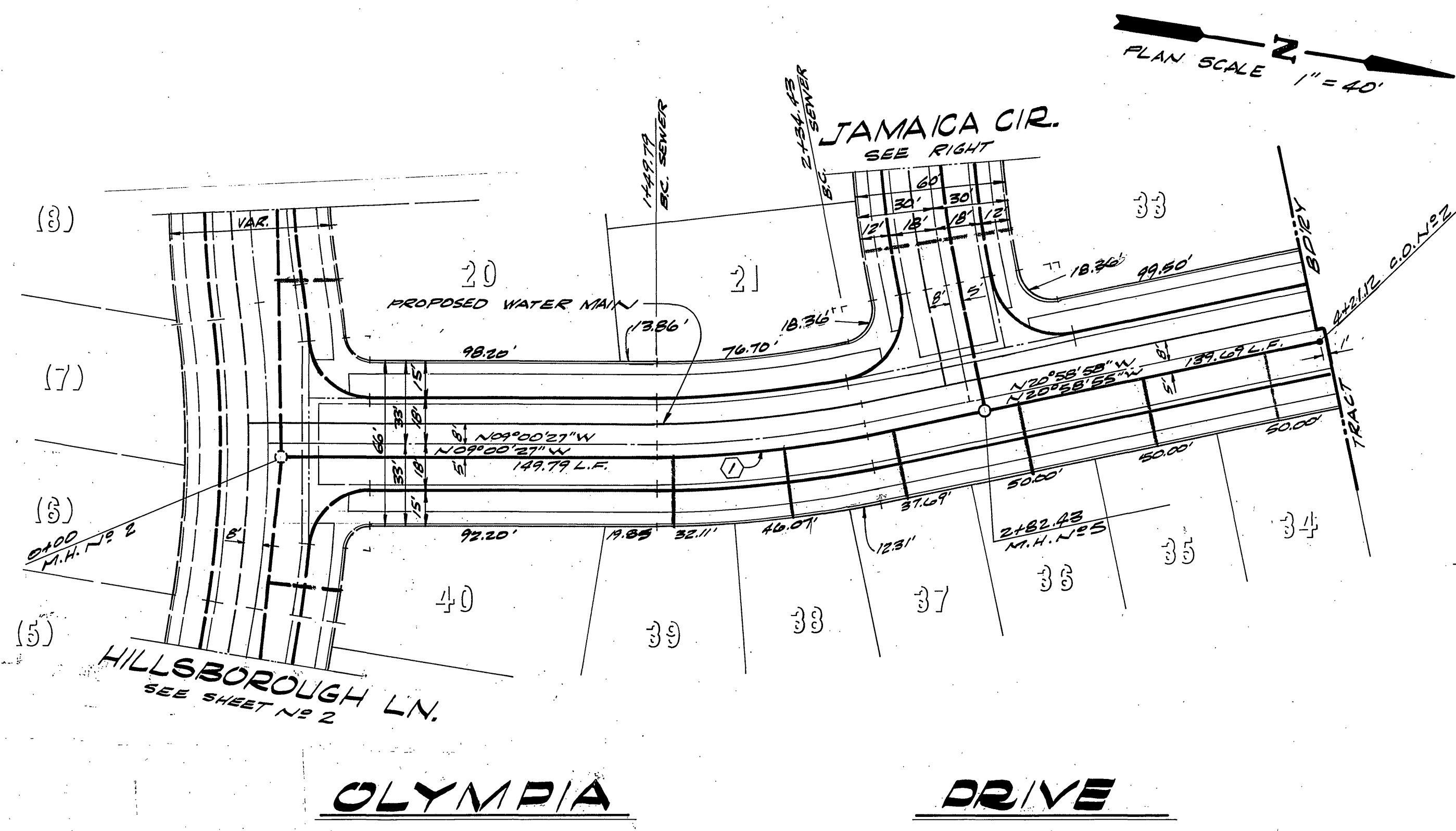
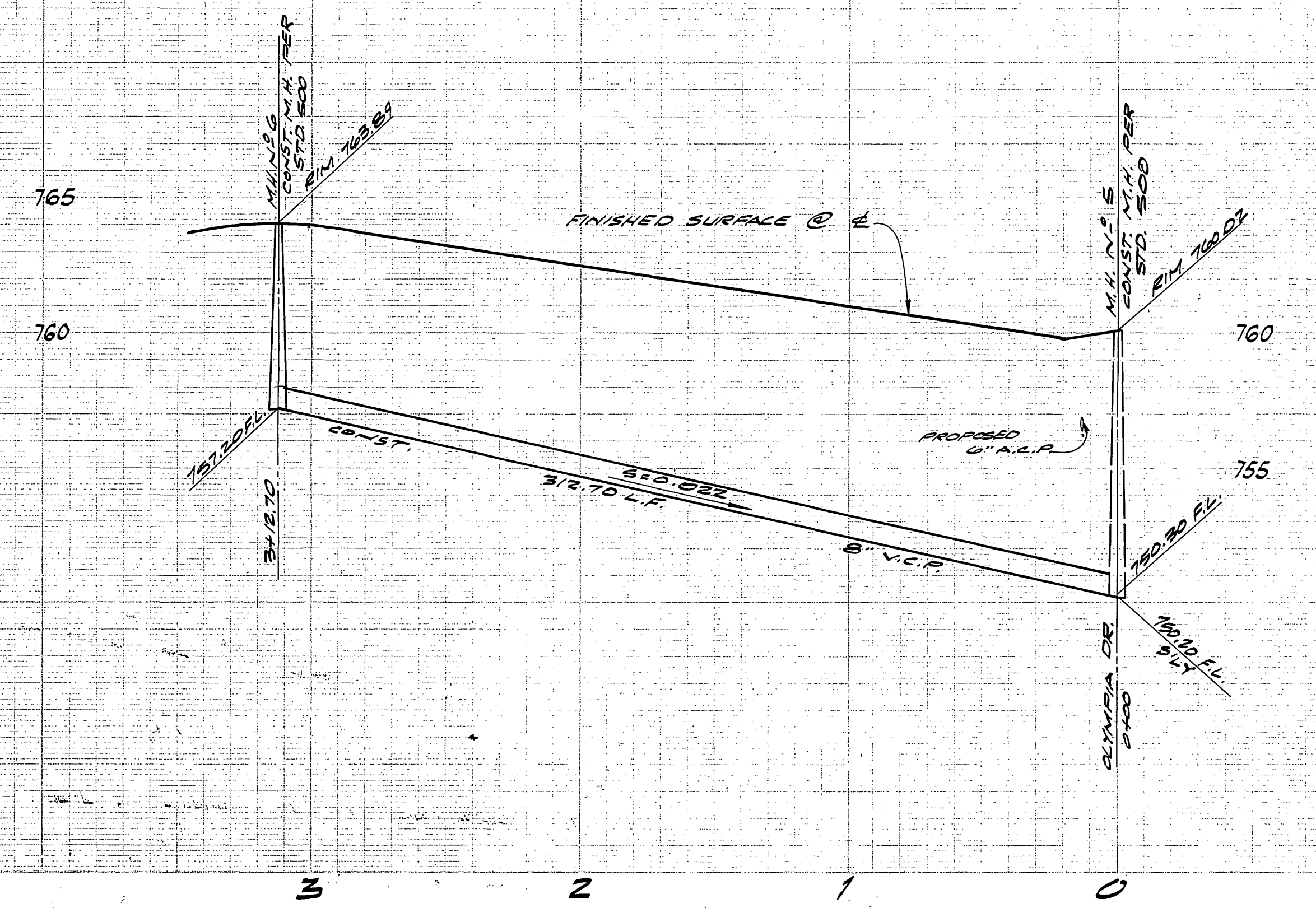
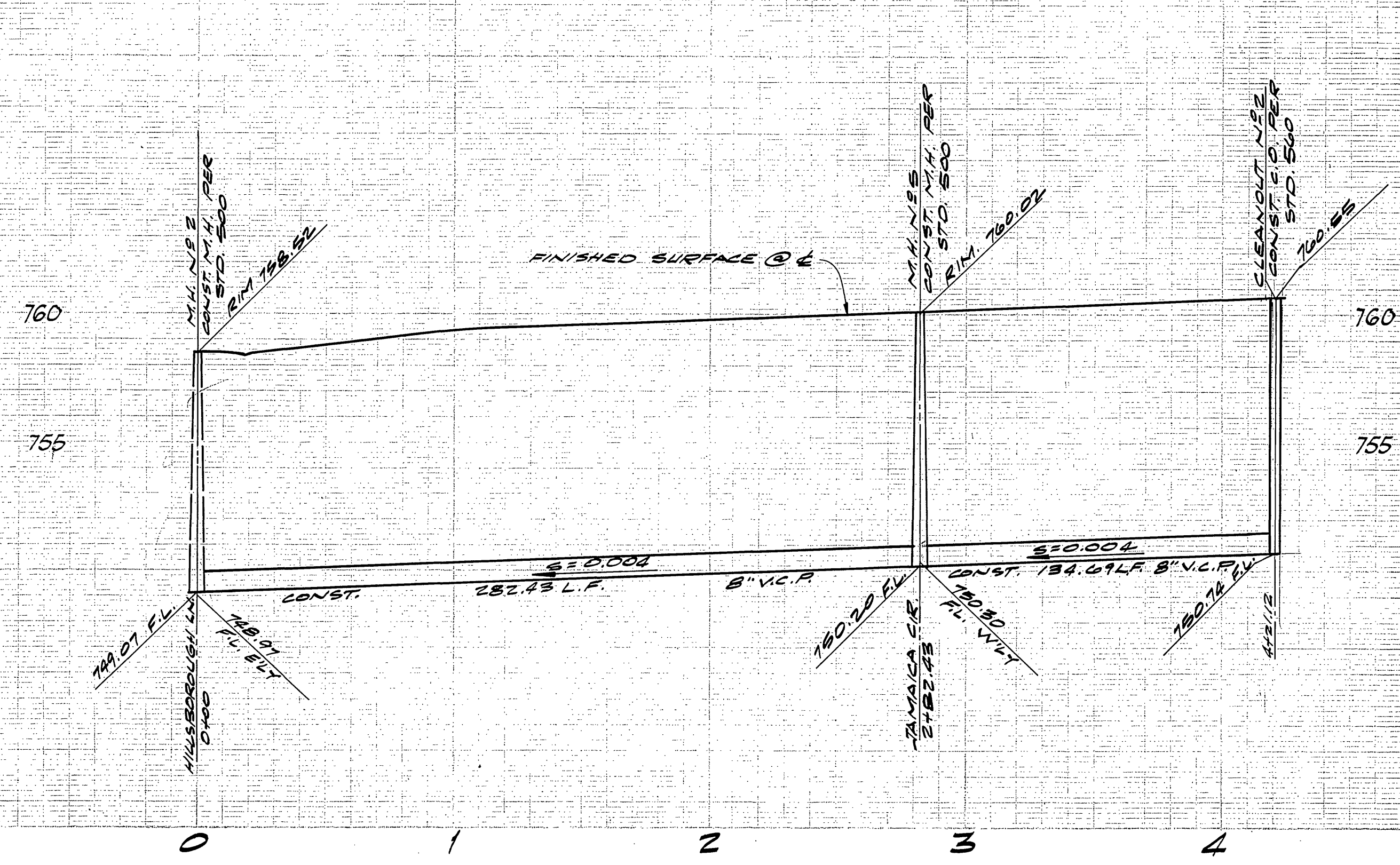
APPROVED BY *William B. Anderson*
OFFICE ENGINEER C.W.M. 11/20/70
PARK DEPARTMENT
TRAFFIC DIVISION
ASSISTANT CITY ENG.

DATE 11/20/70

SEWER PLAN & PROFILE
**HILLSBOROUGH LANE
SAN JOAQUIN WAY**
TRACT NO. 4137

PROJECT NO. **5-817**
SHEET **2** OF **3**

HORIZ. SCALE: 1" = 40' VERT. SCALE: 1" = 4'



SEWER CURVE DATA

①	Δ = 11°58'28"
	R = 408.00'
	L = 82.06'
	T = 42.48'
②	Δ = 21°27'55"
	R = 395.00'
	L = 147.98'
	T = 74.87'

BENCH MARK:
PK NAIL IN EAST CURB
ON TYLER ON & GAYLORD
PRODUCED PER CITY OF
RIVERSIDE F.B. 706/1.
ELEV. 778.21

R. M. Galloway & Associates Inc.
CIVIL ENGINEERS & PLANNERS
LAND AND MINERAL SURVEYORS

NEWPORT BEACH/COSTA MESA • SAN FRANCISCO • LOS ANGELES • SAN DIEGO • ALTURAS, CALIF. • PRESCOTT, ARIZONA

APPROVED BY: *John K. Mandrell* 9.14.70
JOHN K. MANDRELL R.C.E. 13,703 DATE

MARK	REVISIONS	APPR. DATE

DESIGNED BY: *DE* DRAWN BY: *JRT* CHECKED BY: *FLW*

CITY OF RIVERSIDE, CALIFORNIA
DEPARTMENT OF PUBLIC WORKS

APPROVED BY: *William B. Haden*
OFFICE ENGINEER C. W. H. 11/20
PARK DEPARTMENT
TRAFFIC DIVISION
ASSISTANT CITY ENG.

DATE 11/20/70

SEWER PLAN & PROFILE
**OLYMPIA DRIVE
JAMAICA CIRCLE**
TRACT NO. 4137

HORIZ. SCALE: 1" = 40'
VERT. SCALE: 1" = 4'

PROJECT NO.
5-817

SHEET **3** OF **3**

FILE NO.