



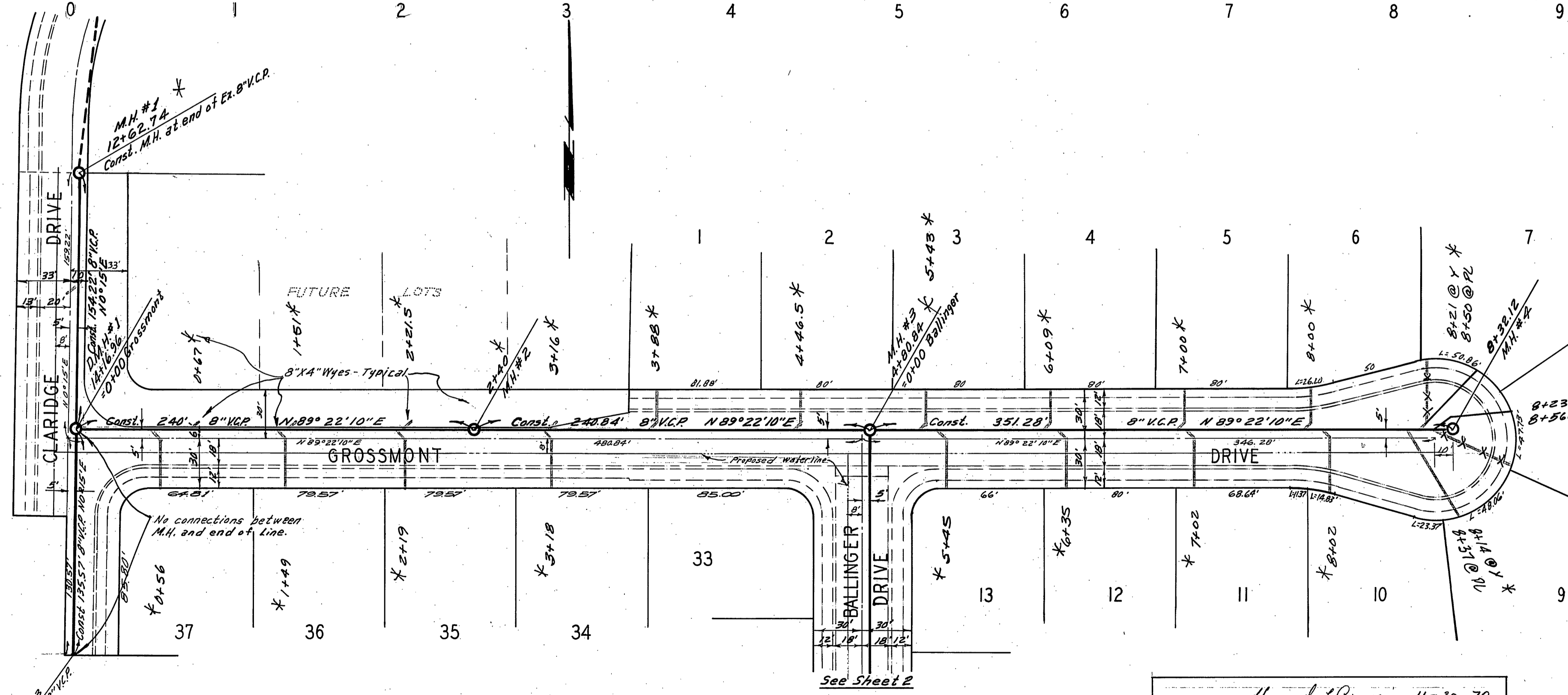
Profile Scale
 Horiz. 1" = 20'
 Vert. 1" = 5'

BENCH MARK
 1. Elev. 1068.250, P.K. nail City Toy in base of light Standard on the Wly Median Island of County Club & Canyon Crest, City F.B. 864-17.
 2. Elev. 1399.31, Chisel 1" North from South end of curb on the West side of Claridge Dr. N.R. Webb F.B. 1014/98

- GENERAL NOTES**
- Construction shall be in accordance with the City of Riverside, Department of Public Works, Standard Specifications No. 461 and Standard Drawings.
 - It shall be the responsibility of the contractor to clear the right of way in accordance with the provisions of the law as it affects each utility including irrigation lines and appurtenances and at no cost to the City.
 - Joints shall be in conformance to ASTM Specifications C-425-64 Type I or III or to ASTM Specifications C-594-66 (Both Spec) with certain exceptions or modifications on file with the City Engineer.
 - Pipe shall be bedded per Case I, Standard Drawing No. 422, unless otherwise specified on plan.
 - Location of wyes and laterals to be determined at the direction of the owner.
 - All stubs and laterals to be constructed in accordance with Standard Drawing No. 502. Stubs shall be plugged and capped.
 - Manhole frames and covers to be set to proposed pavement grades.
 - Laterals are to be 4" and extended to property line.
 - Prior to construction of sewer, Contractor is to expose existing sewer and contact Engineer for verification of existing elevations.

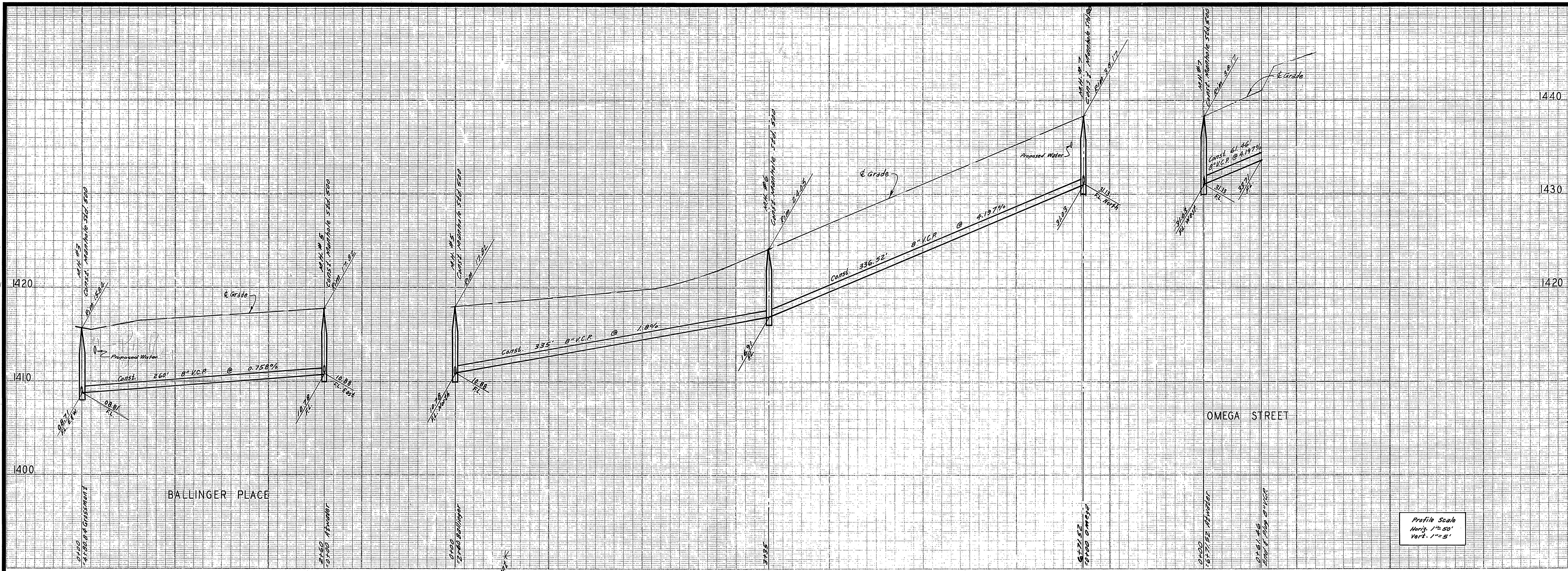
QUANTITY ESTIMATE

8" Vitrified Clay Pipe	2,115 LF
4" Vitrified Clay Pipe	1,284 LF
Manhole Standard No. 500	7 Ea.
4" x 8" Wyes	42 Ea.
Drop Manhole Standard No. 502	1 Ea.



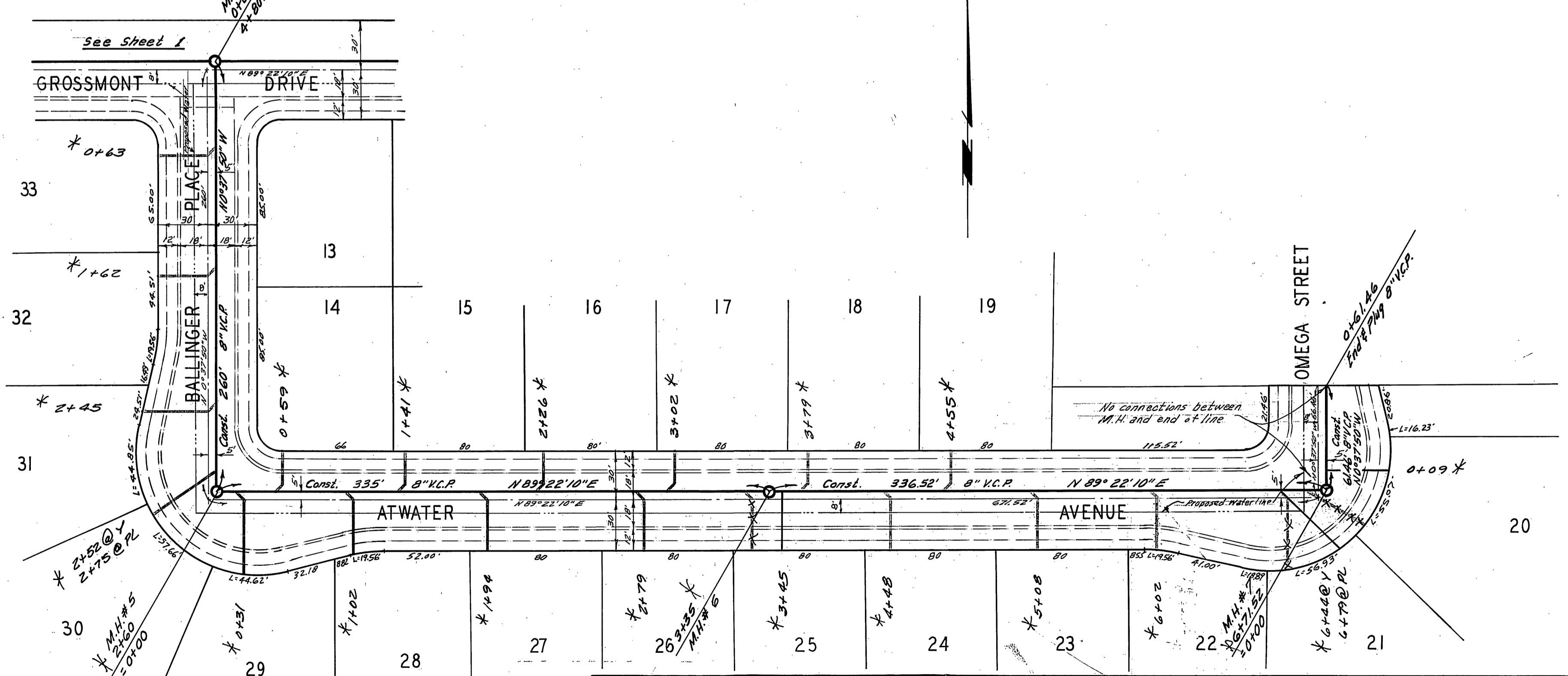
Approved by Howard L. Cross - 11-30-70
 General Superintendent & Chief Engineer - Water Dept.
 Date

ALBERT A. WEBB ASSOCIATES CIVIL ENGINEERS RIVERSIDE, CALIFORNIA APPROVED BY <i>Albert A. Webb</i> DATE 10/19/70 R.E. No. 3876	APPROVED BY <i>William D. Hardison</i> DIRECTOR OF PUBLIC WORKS DATE 8/7/72	CITY OF RIVERSIDE, CALIFORNIA PUBLIC WORKS DEPARTMENT	SEWER PLAN AND PROFILE	ACCOUNT NO. DRAWING NUMBER
			CLARIDGE DRIVE GROSSMONT DRIVE	5-819
W.O. 70-34 FOR LEVEL CORR. F.B. 1014			TRACT NO. 4042	SHEET 1 OF 2 70-34-B



Profile Scale
 Horiz. 1"=50'
 Vert. 1"=5'

- BENCH MARK**
- Elev. 1068.250, Pk. nail 9 City tag in the base of light Standard on the W/4 Median Island of County Club & Canyon Crest. City F.B. 887-17.
 - Elev. 1398.31, Chisel, 1' North from South end of curb on the West side of Claridge Dr. A.A. Webb F.B. 1014/98



* AS BUILT KARL 12/15/72

Approved by *Howard K. Craven* 11-30-70
 General Superintendent & Chief Engineer - Water Dept.
 Date _____

ALBERT A. WEBB ASSOCIATES CIVIL ENGINEERS RIVERSIDE, CALIFORNIA APPROVED BY <i>Emmett N. Webb</i> DATE 12/15/72 R.E. No. 9876 W.O. 70-34 FOR: LEVEL CORP. F.B. 1014		CITY OF RIVERSIDE, CALIFORNIA PUBLIC WORKS DEPARTMENT APPROVED BY <i>William D. Gardner</i> DIRECTOR OF PUBLIC WORKS DATE 8/7/72		ACCOUNT No. DRAWING NUMBER 5-819 SHEET 2 OF 2 70-34-B
SEWER PLAN AND PROFILE BALLINGER PLACE ATWATER AVENUE OMEGA STREET TRACT NO. 4042		SCALE: 1"=50' Horiz., 1"=5' Vert.		