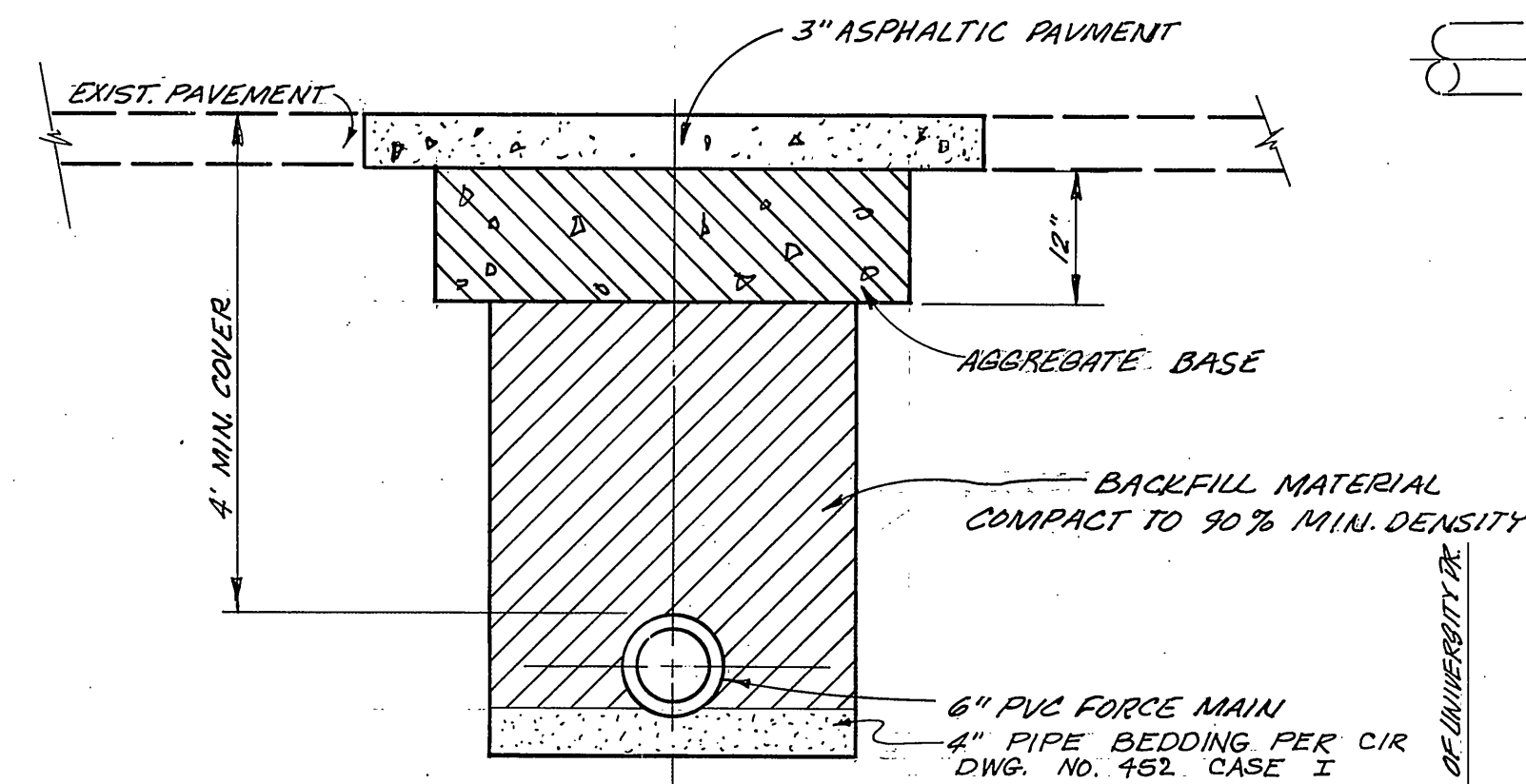


PROJECT LOCATION MAP

SCALE: 1" = 100'



TRENCH DETAIL
NOT TO SCALE

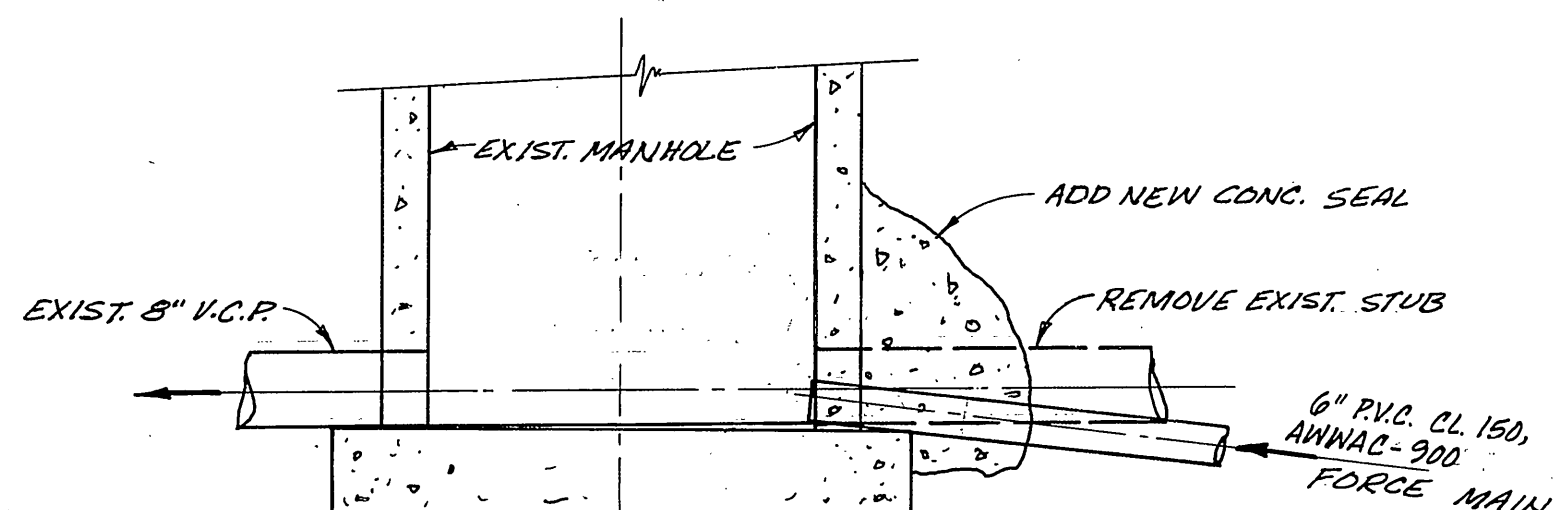
NOTE:

THE PRIVATE ENGINEER SIGNING THESE PLANS IS RESPONSIBLE FOR THE ACCURACY AND ACCEPTABILITY OF THE WORK HEREON. IN THE EVENT OF DISCREPANCIES ARISING DURING CONSTRUCTION, THE PRIVATE ENGINEER SIGNING THE PLANS SHALL BE RESPONSIBLE FOR DETERMINING AN ACCEPTABLE SOLUTION AND REVISING THE PLANS FOR APPROVAL BY THE CITY.

GENERAL NOTES

- CONSTRUCTION SHALL BE IN ACCORDANCE WITH THE STANDARD SPECIFICATIONS FOR PUBLIC WORKS CONSTRUCTION, 1988 EDITION, & 1984, 1990 SUPPLEMENTS, AND SPECIAL CONDITIONS OF THIS CONTRACT.
- ALL PIPING TO BE IN ACCORDANCE WITH APPLICABLE SECTIONS OF THE AMERICAN SOCIETY OF MECHANICAL ENGINEER SPECIFICATIONS WITH ALL FITTINGS MEETING THE SPECIFICATIONS FOR 150 LB. FITTINGS, ASA 16.1 FLANGED.
- PIPE BEDDING SHALL BE DONE IN ACCORDANCE WITH STD. DWG. 452 CASE I

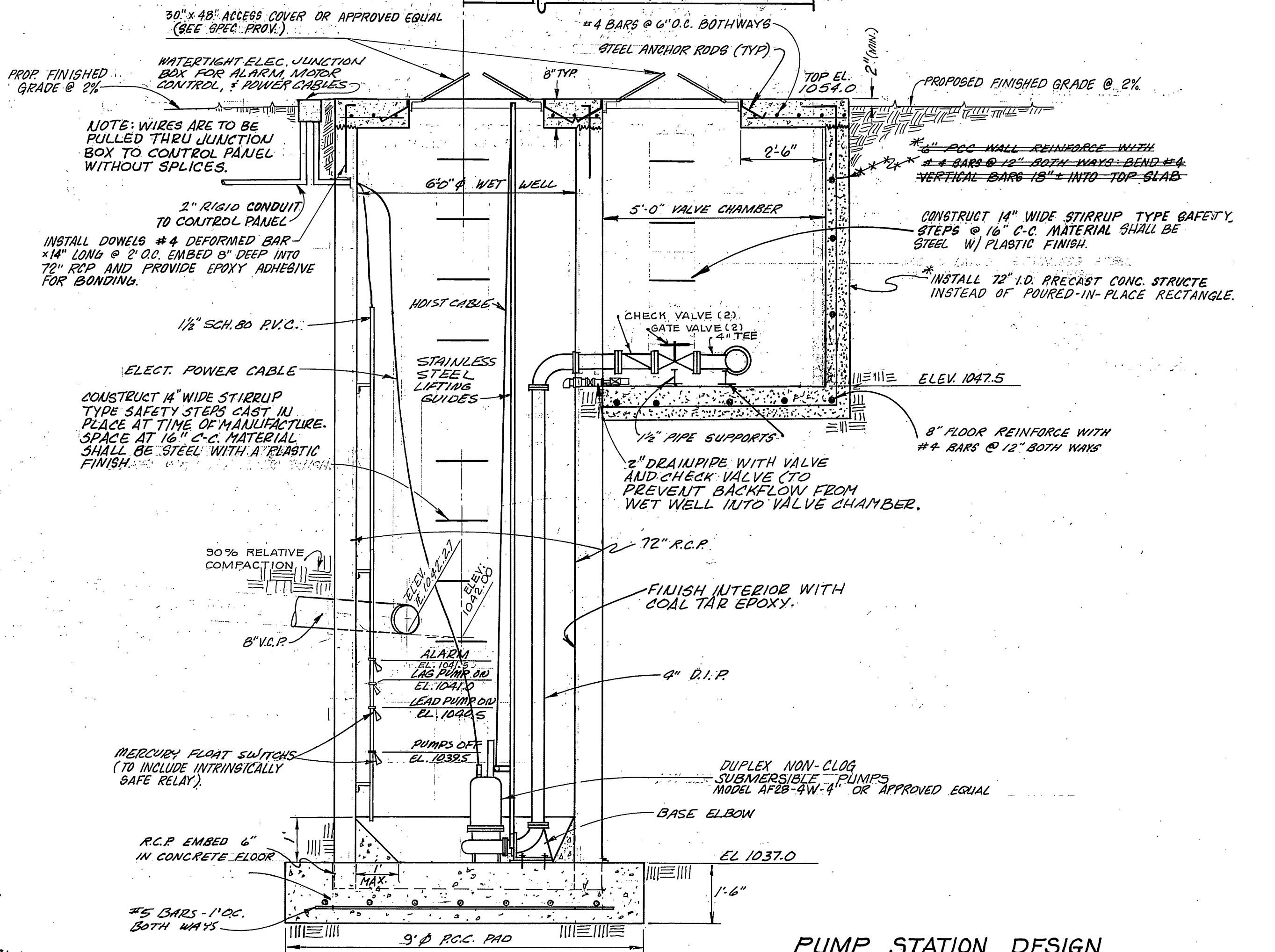
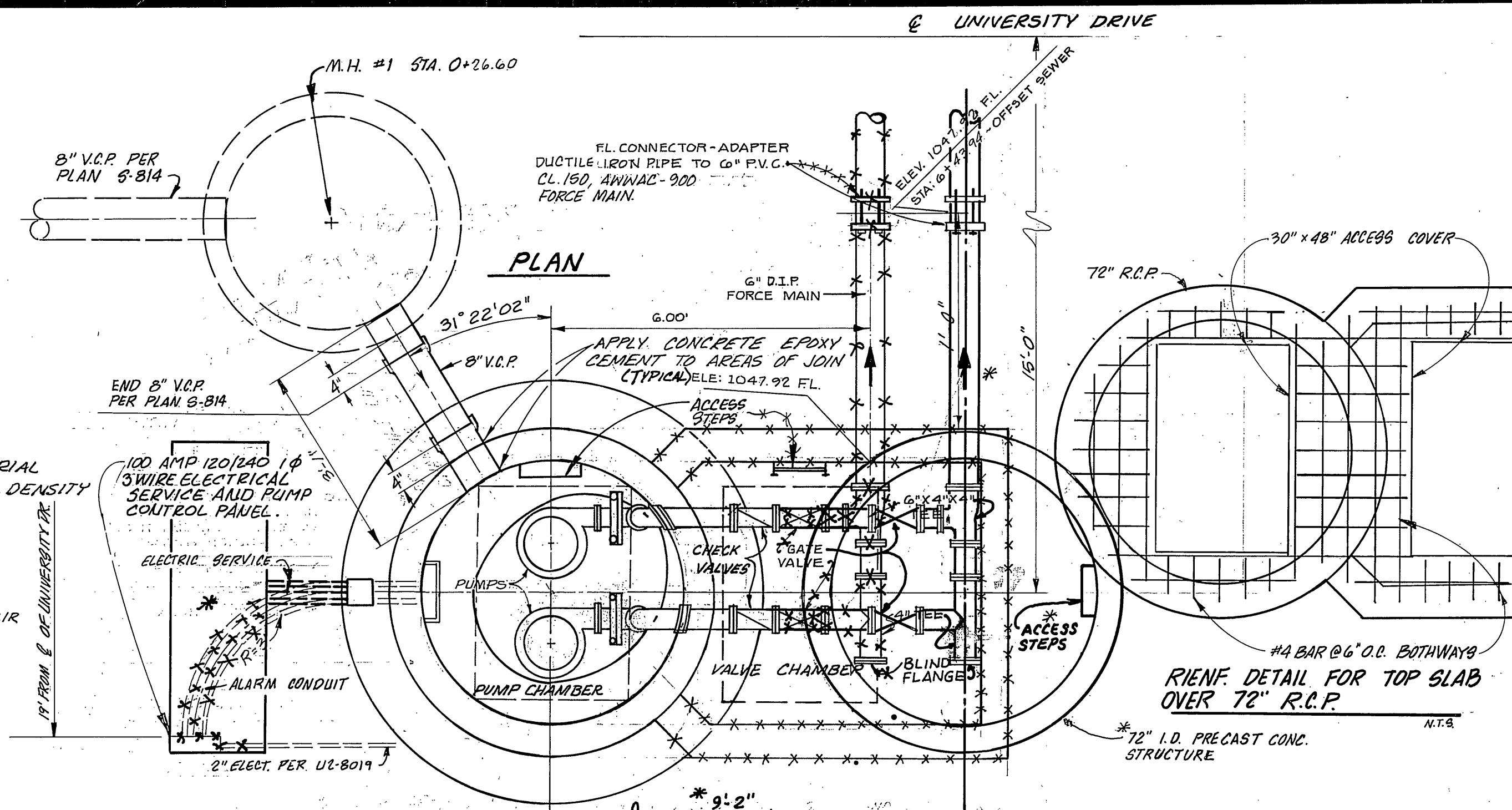
Contractor agrees that he shall assume sole and complete responsibility for job site conditions during the course of construction of this Project, including safety of all persons and property; that this requirement shall apply continuously and not be limited to normal working hours; and that the Contractor shall defend, indemnify and hold the Owner and the Engineer harmless from any and all liability, real or alleged, in connection with the performance of work on this Project, excepting for liability arising from the sole negligence of the Owner or the Engineer.



FORCE MAIN TERMINATION AT MANHOLE - STA. 0+00

SCALE: 1/2" = 1'-0"

ENGINEER IN RESPONSIBLE CHARGE
Hans J. Kausa Jr.
HANS J. KAUSA JR.
R.C.E. 14712 EXPIRES 3/31/92
DATE 9/12/1990



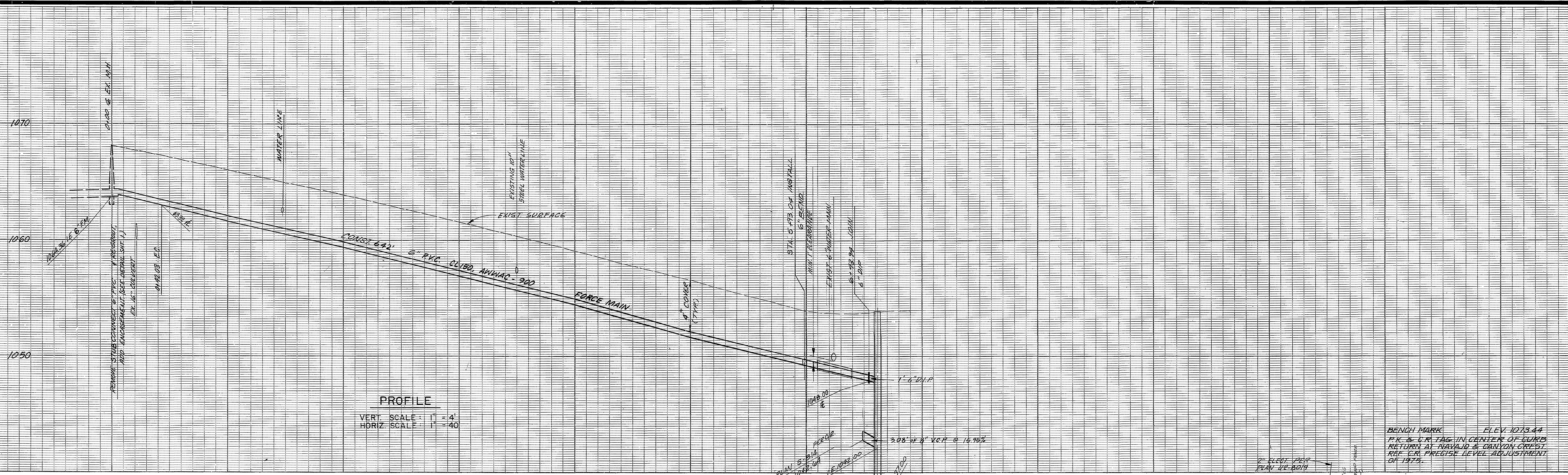
PUMP STATION DESIGN
PUMP STATION DETAILS
N.T.S.

FLOW	30 G.P.M. (EACH PUMP)
T.D.H.	35 FT.
HORSEPOWER	2.75 H.P.
PHASE	1 φ
VOLTS	230
MOTOR SPEED	1760 R.P.M.

* AS BUILT 9-5-91 LHM

NOTICE TO CONTRACTOR: The existence and location of any underground utility lines or structures shown on these plans were obtained by a search of the available records. To the best of our knowledge there are no existing utilities except as shown on these plans. The Contractor is required to take due precautionary measures to protect the utilities shown and any others not shown or of record.

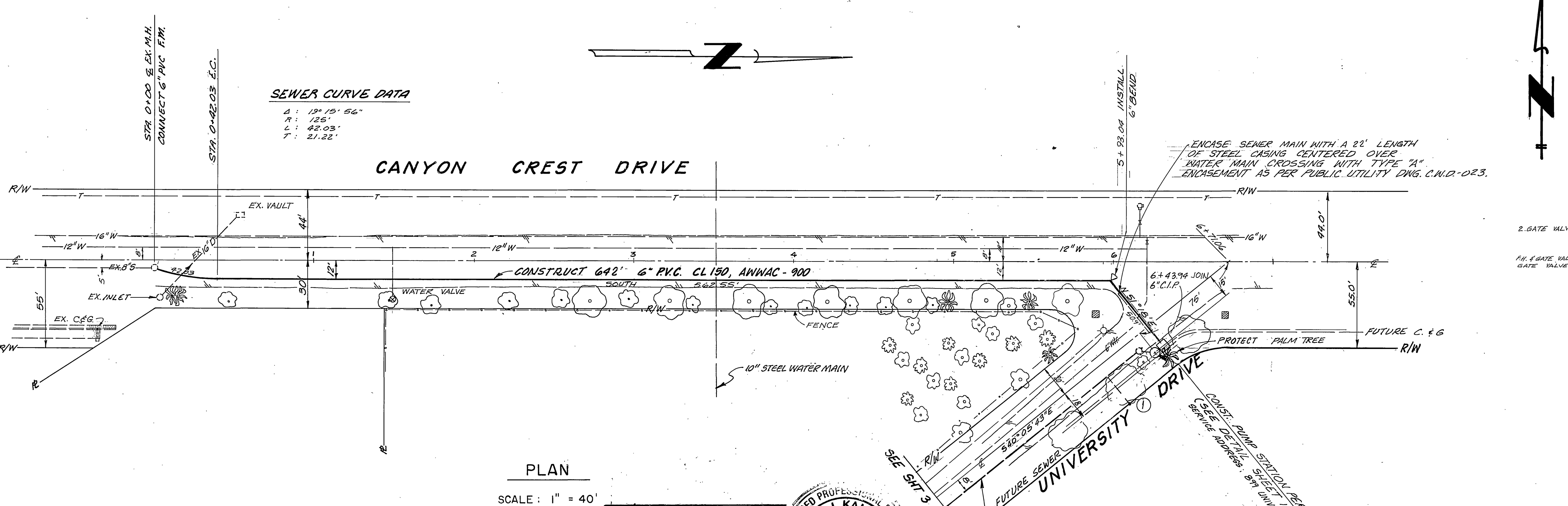
CITY OF RIVERSIDE DOMESTIC SYSTEMS BY: <i>Richard J. Ditch</i> CHIEF UTILITIES ENGINEER, WATER DATE: 9-13-90	J. F. DAVIDSON ASSOCIATES CIVIL ENGINEERS - SURVEYORS - PLANNERS RIVERSIDE, CALIFORNIA APPROVED BY: <i>[Signature]</i> DATE: 3/18/91 R.E. No. 17750	CITY OF RIVERSIDE, CALIFORNIA DEPARTMENT OF PUBLIC WORKS APPROVED BY: <i>[Signature]</i> DATE: 9/12/90 DIRECTOR OF PUBLIC WORKS	UNIVERSITY KNOLLS OFFSITE SEWER PROJECT NO. 32-577-557 S-821 SHEET 1 OF 2 SCALE: AS NOTED FILE NO. 5534



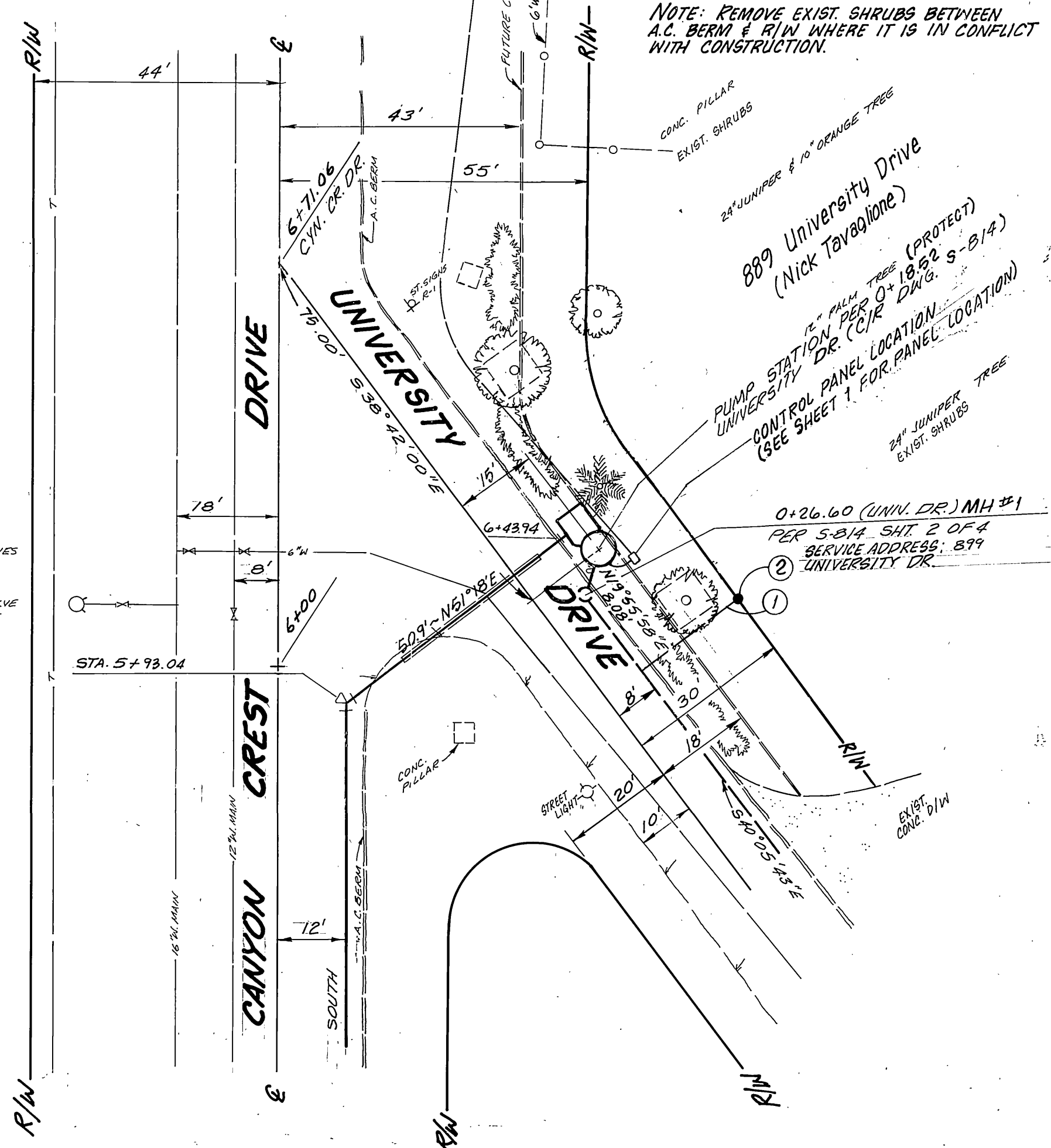
PROFILE
 VERT. SCALE: 1" = 4'
 HORIZ. SCALE: 1" = 40'

BENCH MARK ELEV. 1073.44
 P.K. 6 C.R. TAG IN CENTER OF CURB
 RETURN AT NAVAJO & CANYON CREST
 REF. C.R. PRECISE LEVEL ADJUSTMENT
 OF 1973.

SEWER CURVE DATA
 Δ: 10°15'56"
 R: 125'
 L: 42.03'
 T: 21.22'

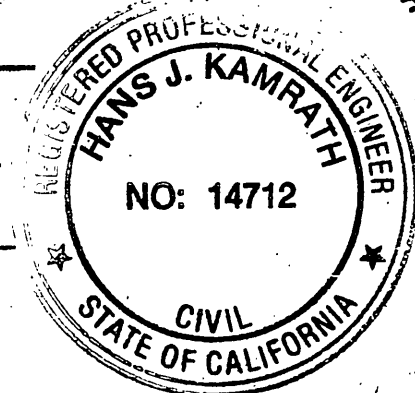


PLAN
 SCALE: 1" = 40'



PUMP STATION SITE PLAN
 SCALE: 1" = 20' * AS BUILT 9-5-91 4H

ENGINEER IN RESPONSIBLE CHARGE
 HANS J. KAMRATH
 R.C.E. 14712 EXPIRES 3/31/93
 DATE 9/12/1990



- ① 4" LATERAL TO BE INSTALLED BY OTHERS.
- ② CONTRACTOR TO INSTALL 9" BACK-FLOW DEVICE. J.R. SMITH NO. 1084 QS APPROVED EQUAL.

NOTICE TO CONTRACTOR: The existence and location of any underground utility lines or structures shown on these plans were obtained by a search of the available records. To the best of our knowledge there are no existing utilities except as shown on these plans. The Contractor is required to take due precautionary measures to protect the utilities shown and any others not shown or not of record.

CITY OF RIVERSIDE
 DOMESTIC SYSTEM
 BY: *D. David* 9-13-90
 CHIEF UTILITIES ENGINEER, WATER DATE

J. F. DAVIDSON ASSOCIATES
 CIVIL ENGINEERS SURVEYORS PLANNERS
 3426 TENTH STREET RIVERSIDE, CALIFORNIA
 APPROVED BY: *[Signature]* DATE 9-13-90
 R.E. NO. 17550

MARK	REVISIONS	APPR.	DATE

CITY OF RIVERSIDE PUBLIC WORKS DEPARTMENT
 APPROVED BY: *[Signature]*
 DEPUTY P.W. ENGINEER
 APPROVED BY: *[Signature]*
 CHIEF P.W. INSPECTOR
 DATE 9/12/90

UNIVERSITY KNOLLS OFFSITE SEWER
 HORIZ. SCALE: 1" = 40' VERT. SCALE: 1" = 4'

ACCOUNT NO. 32-571-557
S-821
 SHEET 2 OF 2
 FILE NO. 5534