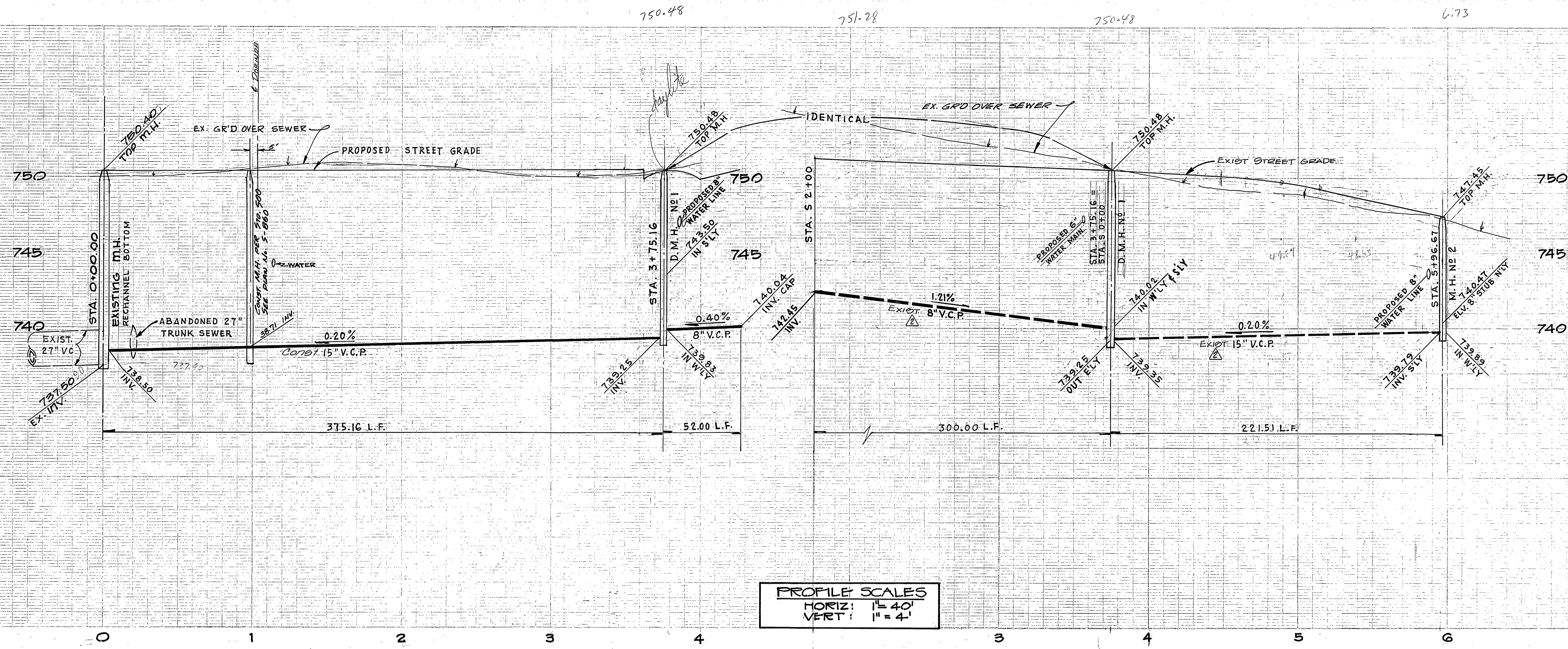
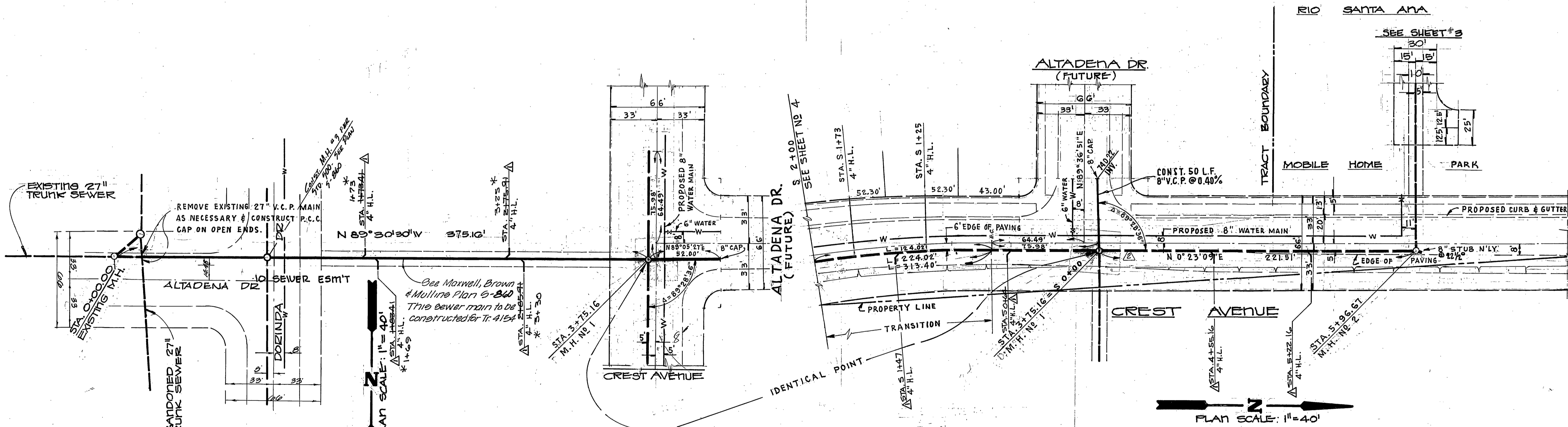


**MISSING SHEET**



**PROFILE SCALES**  
 HORIZ: 1" = 40'  
 VERT: 1" = 4'



PARTIAL SEWER CURVE DATA	TOTAL SEWER CURVE DATA
Δ = 15°16'25"	Δ = 21°25'04"
R = 840.36'	R = 840.36'
L = 224.02'	L = 313.40'
T = 112.68'	T = 158.54'

**BENCH MARK**  
 PK NAIL IN EAST CURB  
 ON TYLER ON E GAYLORD  
 PRODUCED PER CITY OF  
 RIVERSIDE F.B. 706.11  
 ELEV. 778.21

\*AS BUILT 8/2/72 LRDZ

Approved for construction From  
 Sta 0+00 Altadena to Sta 3+75.16 Crest  
*[Signature]*  
 Director of Public Works

APPROVED BY: *[Signature]* DATE: 3-16-71  
 CHIEF UTILITIES ENGR. WATER  
 APPROVED BY: *[Signature]* DATE: 1-7-71  
 JOHN K. MARDELL R.C.E. 13103 DATE

REVISIONS	DATE	BY
CHANGED PROP SEWER TO EXIST SEWER	11-18-71	JCC
ADD SERV. CONNECTIONS PER CITY REV.	11-18-71	JCC

OFFICE ENGINEER	DATE	APPROVED BY
<i>[Signature]</i>	3/16/71	<i>[Signature]</i>
PARK DEPARTMENT		DIRECTOR OF PUBLIC WORKS
TRAFFIC DIVISION		
ASSISTANT CITY ENGR.		

**SEWER PLANS AND PROFILES**  
**WESTERN JURUPA**  
**TRUNK SEWER NO. 1**  
 FROM 375' EAST OF INTERSECTION OF  
 CREST AVE. AND ALTADENA DR. TO  
 JURUPA AVE. 483' E/O TYLER ST.  
 C-28-690

PROJECT NO. **S-829**  
 SHEET **2** OF **5**  
 FILE NO.