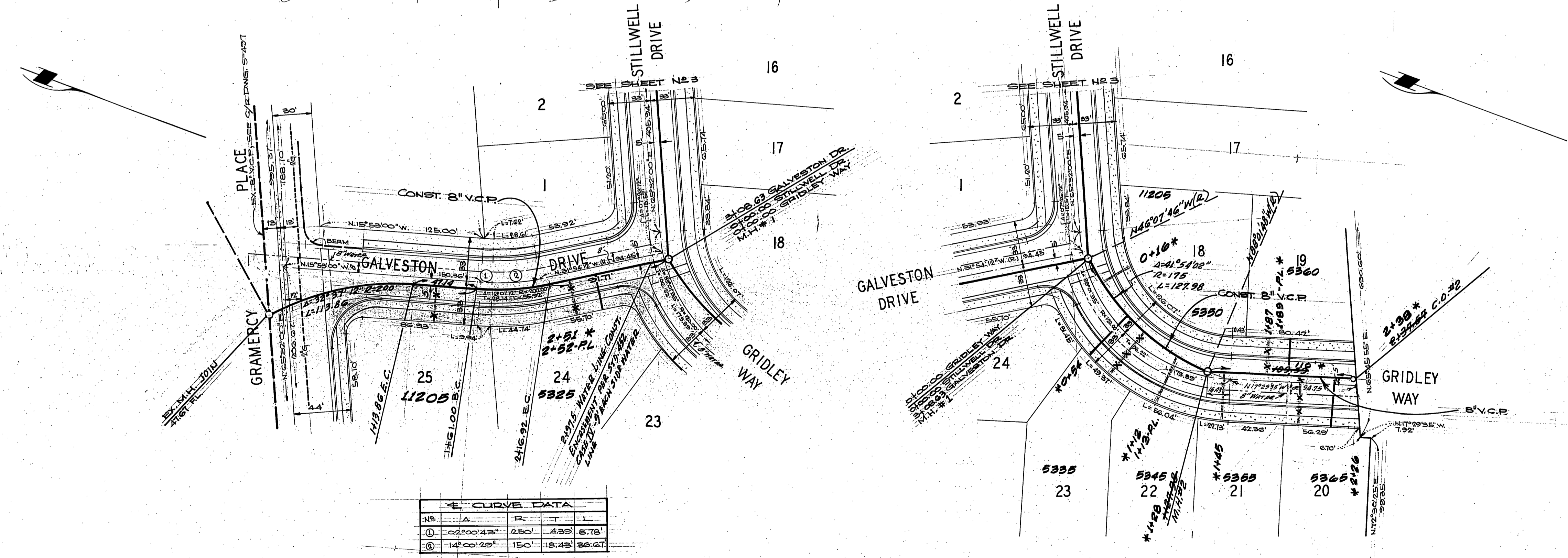
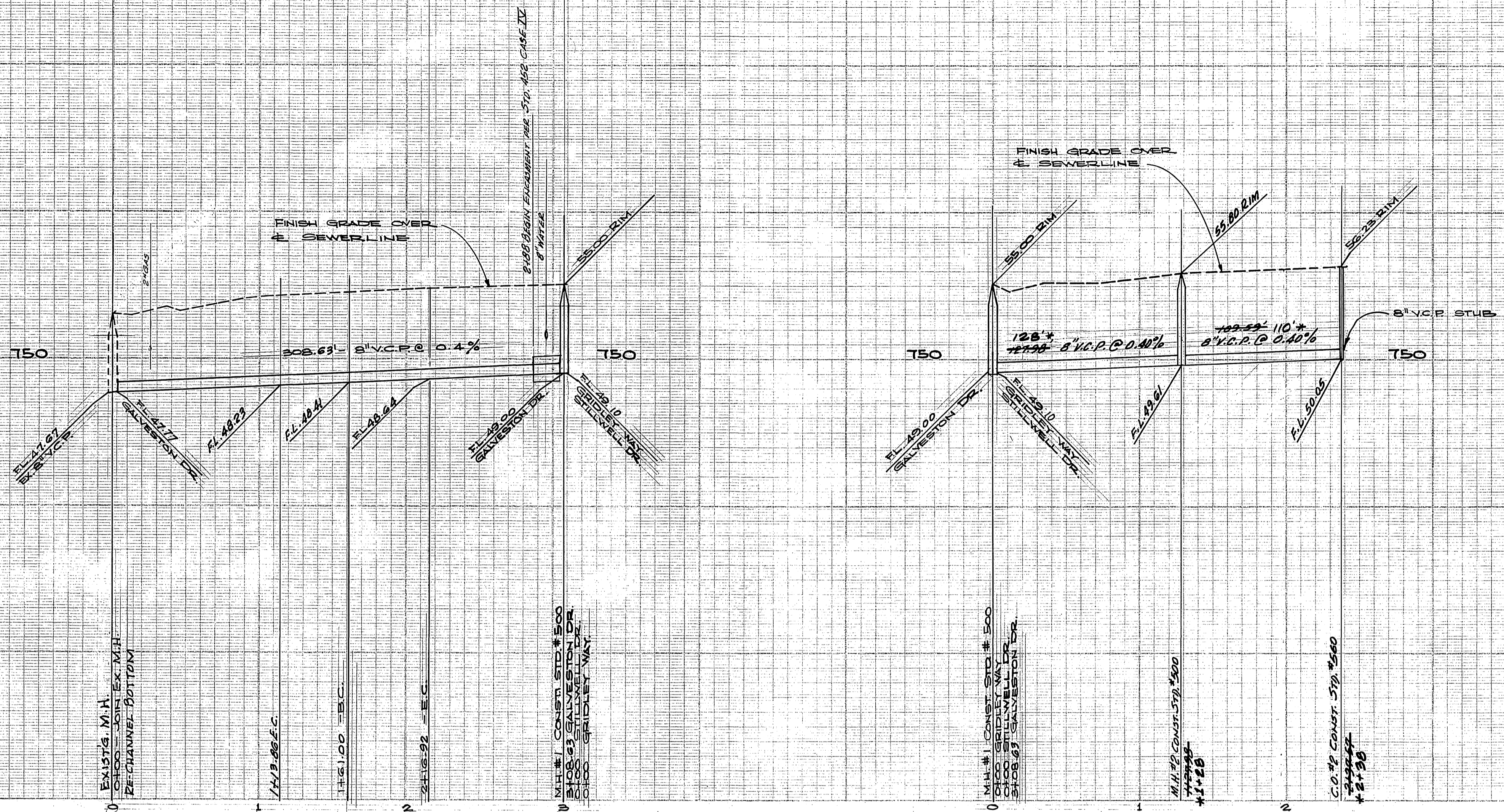


- GENERAL NOTES
1. Construction shall be in accordance with the City of Riverside, Department of Public Works, Standard Specifications 1970 Edition and Standard Drawings.
 2. It shall be the responsibility of the contractor to clear the right of way in accordance with the provisions of the law as it affects each utility including irrigation lines and appurtenances and at no cost to the City.
 3. Joints shall be in accordance to ASTM Specifications C-495-64 Type I or II or to ASTM Specifications C-594-64T (Band Seal) with certain exceptions or modifications on file with the City Engineer. (Band Seal) not to be used in curved section of sewer.
 4. Pipe shall be bedded per Case 1, Standard Drawing No. 452, unless otherwise specified on plan.
 5. Location of wyes and laterals to be determined at the direction of the owner.
 6. All stubs and laterals to be constructed in accordance with Standard Drawing No. 562. Stubs shall be plugged and capped.
 7. Manhole frames and covers to be set to proposed pavement grades.
 8. Laterals are to be 4" and extended to property line.
 9. Prior to construction of sewer, Contractor is to expose existing sewer and contact Engineer for verification of existing elevations.

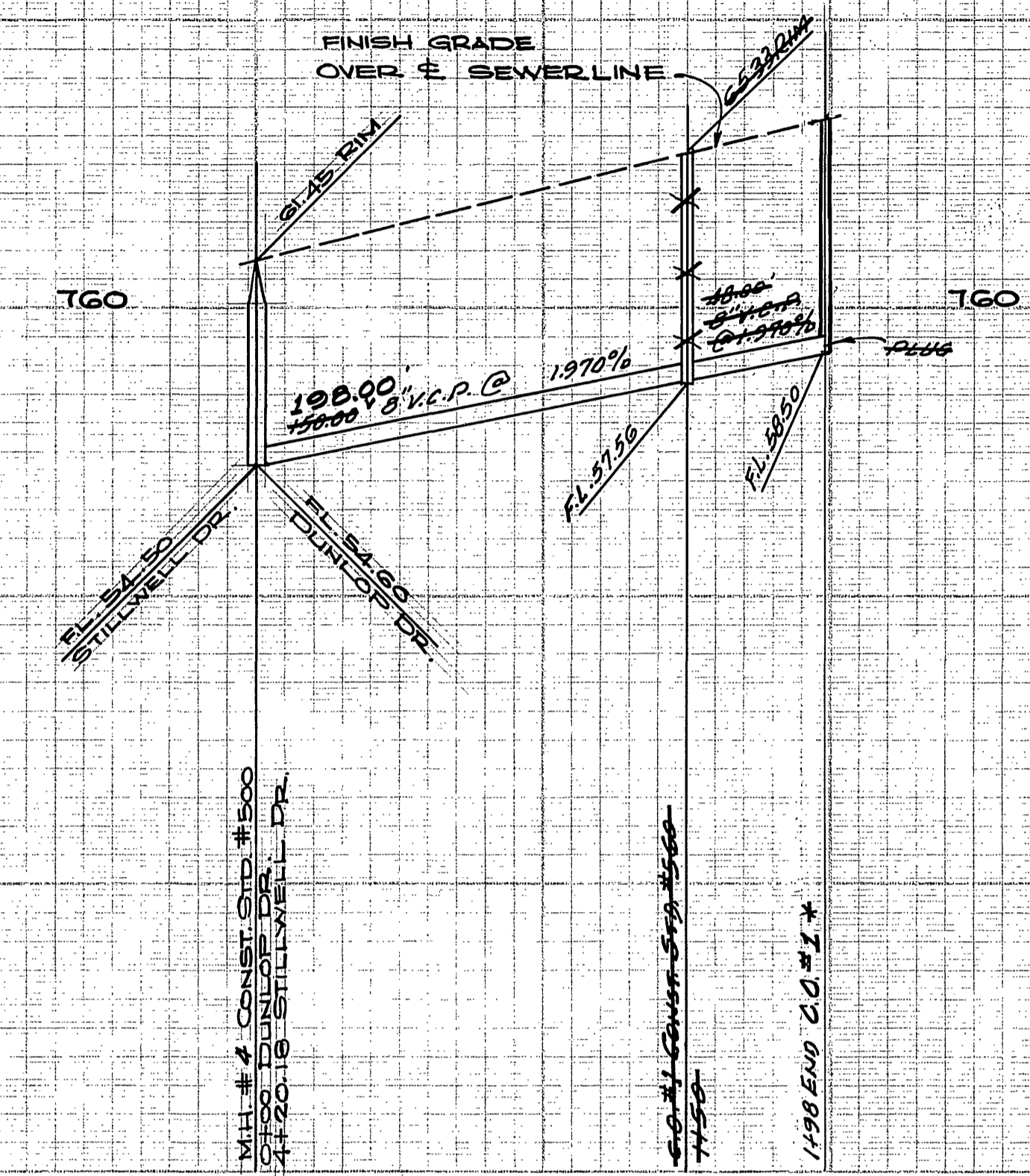
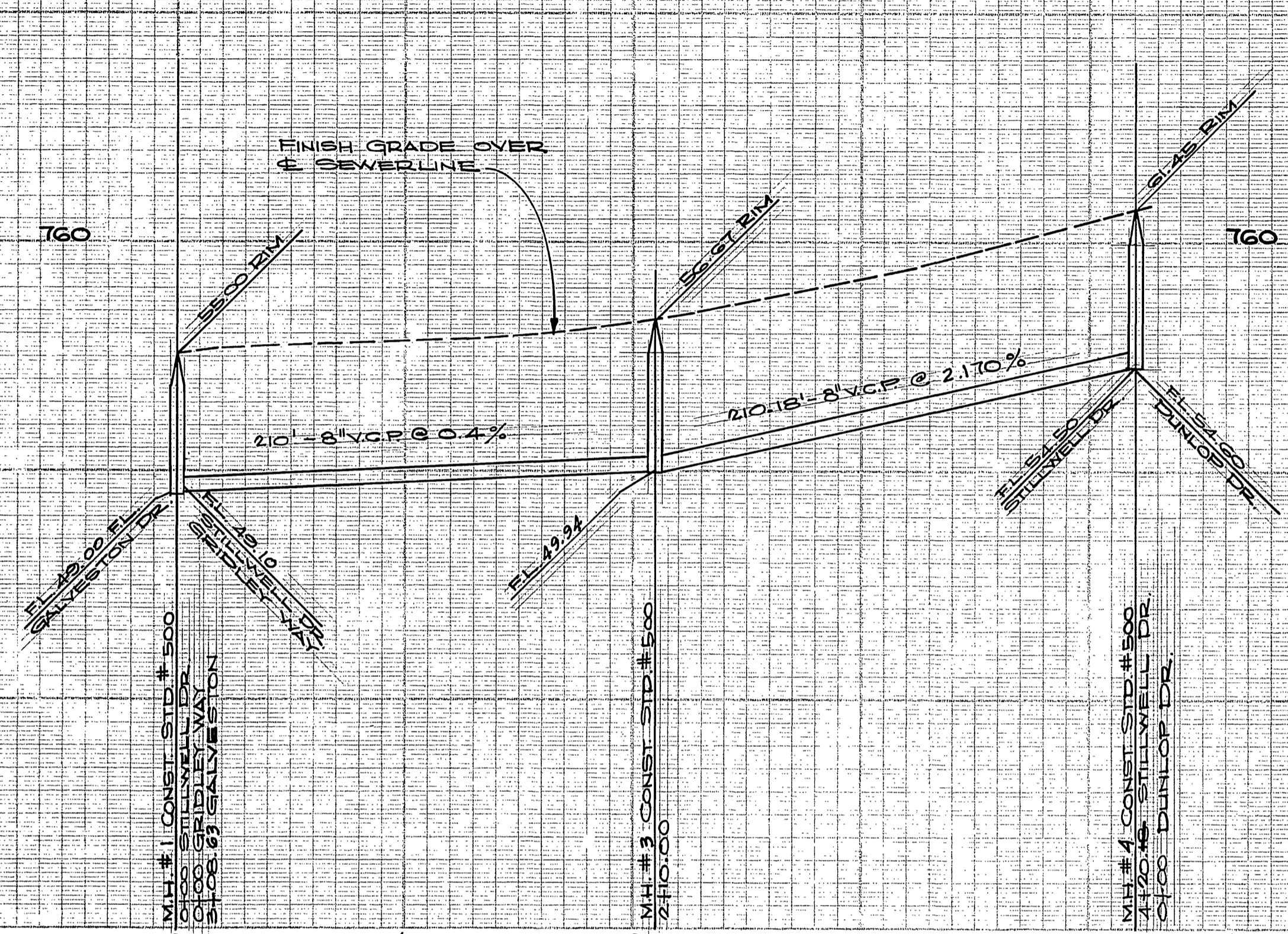
ALBERT A. WEBB ASSOCIATES CIVIL ENGINEERS RIVERSIDE, CALIFORNIA APPROVED BY: <i>R. A. Webb</i> DATE 3/8/71 R.E. No. 2276	CITY OF RIVERSIDE, CALIFORNIA DEPARTMENT OF PUBLIC WORKS		SEWER PLAN & PROFILE TRACT NO. 4107 INDEX MAP	PROJECT NO. S-831 SHEET 1 OF 3 FILE NO. TO-305B
	APPROVED BY: <i>[Signature]</i> OFFICE ENGINEER PARK DEPARTMENT TRAFFIC DIVISION ASSISTANT CITY ENG.	BY: <i>[Signature]</i> DATE: 5-4-71	APPROVED BY: <i>[Signature]</i> DIRECTOR OF PUBLIC WORKS	HORIZ. SCALE: 1" = 80' VERT. SCALE: 1" = 10'
W.O. TO-305 FOR JOHNSON-MYERS-COUGH F.B. 1020 DESIGNED BY: REC. DRAWN BY: V.E. CHECKED BY: REC. #				



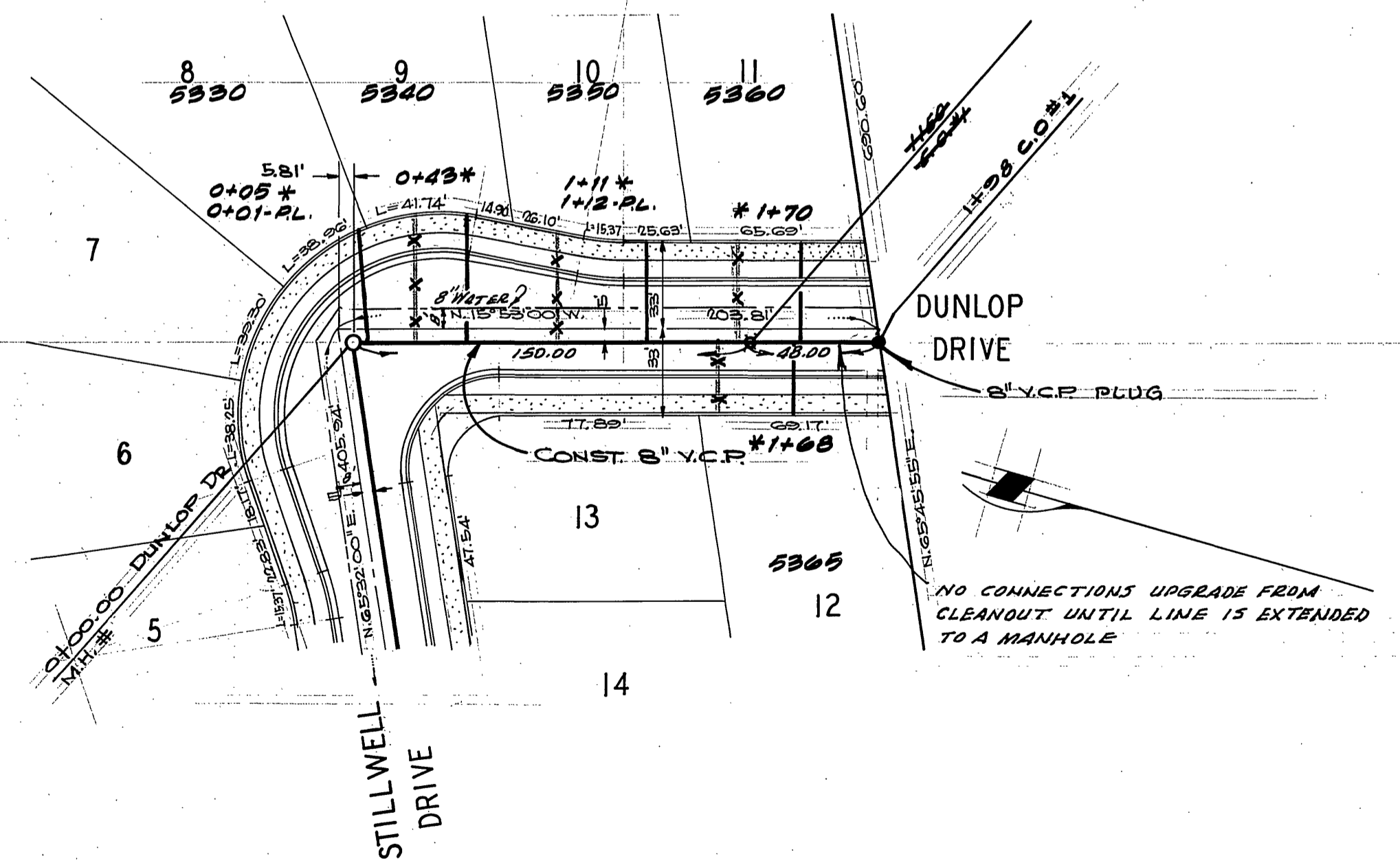
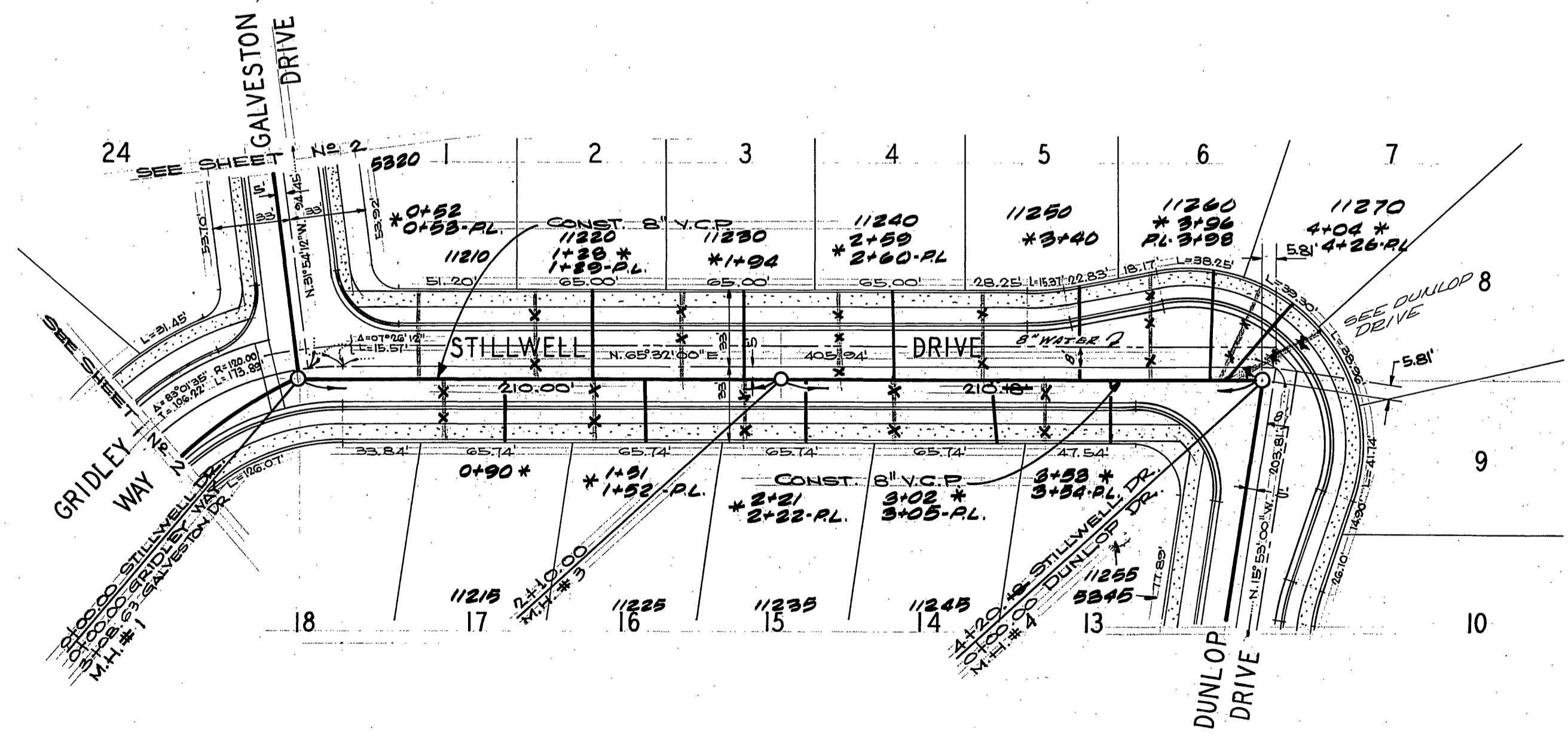
BENCH MARK
 PK. NAIL IN NLY. CURB 300' ELY. OF GOLDEN
 ON GRAMERCY IN FRONT OF HOUSE # 11250
 ELEVATION 709.36, CITY FB. 705/22.

CURVE DATA				
NO.	A	R	T	L
①	02°00'43"	250'	43.25'	8.78'
②	14°00'29"	150'	18.42'	36.47'

ALBERT A. WEBB ASSOCIATES CIVIL ENGINEERS RIVERSIDE, CALIFORNIA APPROVED BY: <i>[Signature]</i> DATE 3/9/71 R.E. No. 3275	MARK: _____ REVISIONS: _____ APPR. DATE: _____ DESIGNED BY REC. DRAWN BY VS. CHECKED BY EC	CITY OF RIVERSIDE, CALIFORNIA PUBLIC WORKS DEPARTMENT APPROVED BY: _____ BY: <i>[Signature]</i> DATE: _____ PRINCIPAL ENGINEER PARK DEPARTMENT TRAFFIC DIVISION CHIEF PUB. WKS. ENGR.	SEWER PLAN & PROFILE TRACT NO. 4107 GALVESTON DRIVE & GRIDLEY WAY SCALE: HORIZ. 1" = 50' VERT. 1" = 5' * as built - 7/2/71 - norm	ACCOUNT No. _____ DRAWING NUMBER S-831 SHEET 2 OF 3 70-305B
		DATE: 5-4-71		



BENCH MARK
 PK. NAIL IN N'LY CURB 300' E'LY. OF GOLDEN
 ON GRAMERCY IN FRONT OF HOUSE N° 11259
 ELEVATION 723.36, CITY FB. 705/22.



* as built 7.7.71 norm

ALBERT A. WEBB ASSOCIATES CIVIL ENGINEERS RIVERSIDE, CALIFORNIA APPROVED BY: <i>[Signature]</i> DATE: 2/0/71 R.E. No. 2872	CITY OF RIVERSIDE, CALIFORNIA PUBLIC WORKS DEPARTMENT APPROVED BY: <i>[Signature]</i> DATE: 5-4-71 CHIEF PUB. WKS. ENGR.	SEWER PLAN & PROFILE TRACT NO. 4107 STILLWELL DRIVE & DUNLOP DRIVE	ACCOUNT NO. DRAWING NUMBER S-831
			SHEET 3 OF 3 TO-305B

W.O. 70-205 FOR JOHNSON-MYERS-COUGH F.B. 1020

DESIGNED BY R.E.C. DRAWN BY V.S. CHECKED BY REC BB

SCALE: HORIZ. 1"=50'; VERT. 1"=5'