

SEWER CURVE DATA

①	R = 200'
	Δ = 32°37'11"
	T = 59.52'
	L = 113.86'
②	R = 100'
	Δ = 63°48'38"
	T = 62.20'
	L = 111.28'

B.M. - Pk. Nail in lead at the N.W. Curb
Return of Cypress and Van Buren,
per C/R F.B. 700/31-50, 55-57.
Elev = 736.797

T.B.M. - Chris "C" South end D/W Station
40+28, per J.F.D. F.B. 1025/5.
Elev = 742.26

- GENERAL NOTES:**
- Construction shall be in accordance with the Standard Specifications for Public Works construction, 1970 Edition and City of Riverside Standard Drawings.
 - All Manholes to be constructed per Std. #500 except as noted.
 - All Cleanouts to be constructed per Std. #540.

LEGEND:

— Encasement per City of Riverside Std. #452 Case II.

J. F. DAVIDSON ASSOCIATES
CIVIL ENGINEERS - SURVEYORS - PLANNERS
RIVERSIDE, CALIFORNIA

APPROVED BY: *Robert J. Kopp* DATE: 3-87
R.E. No. 13699

W.O. 2766 FOR: Miller Const. Co. F.B. 1029/5

Approved By:
Howard D. Oreson 4-28-71
Chief Public Utility Engineer Date

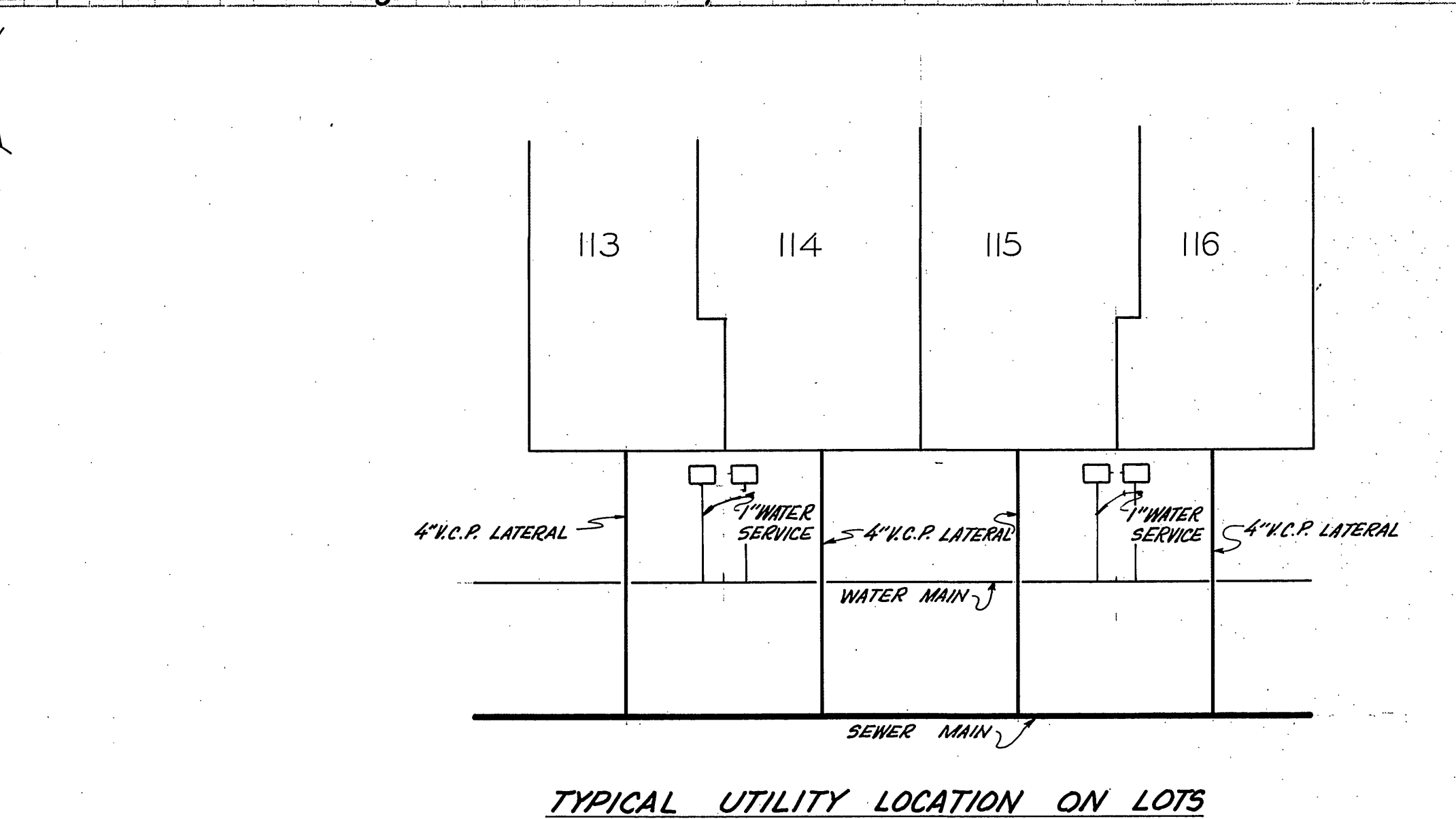
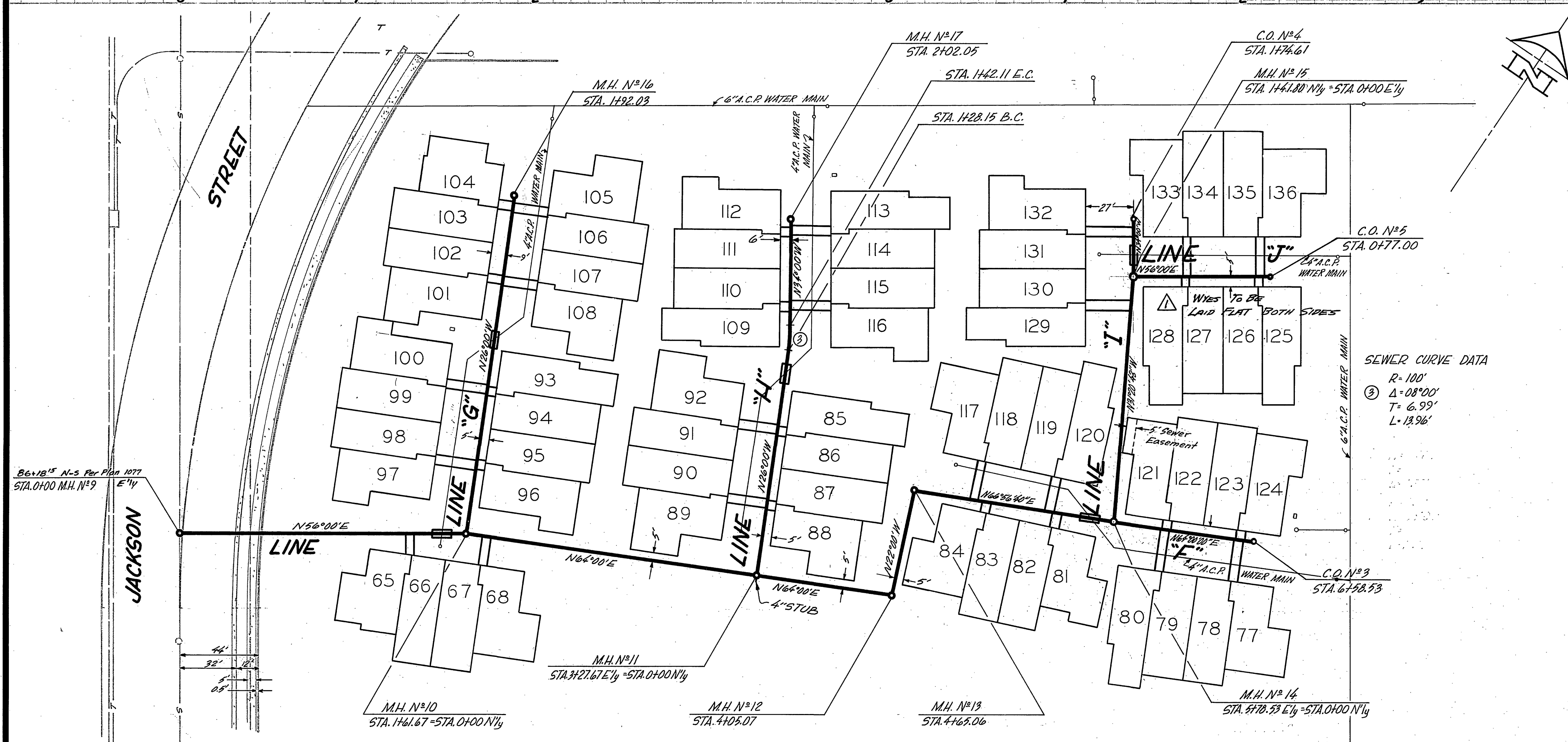
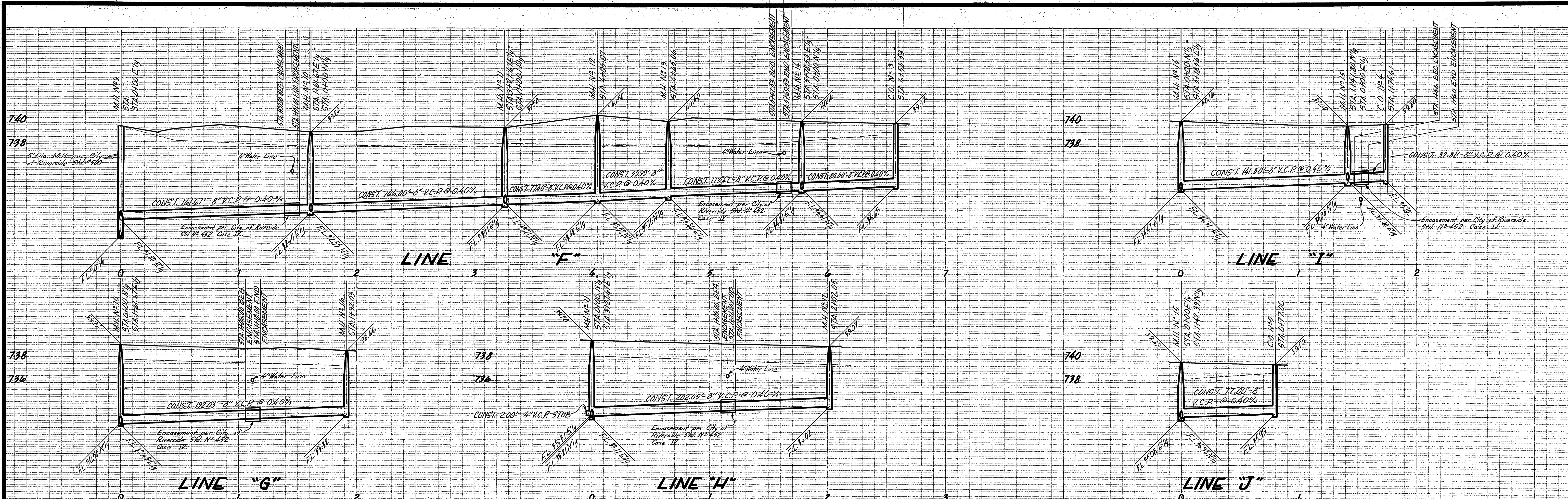
CITY OF RIVERSIDE, CALIFORNIA
DEPARTMENT OF PUBLIC WORKS

APPROVED BY	BY	DATE	APPROVED BY
OFFICE ENGINEER	<i>E. Wilson</i>	5/14	<i>William S. Gardner</i>
PARK DEPARTMENT			DIRECTOR OF PUBLIC WORKS
TRAFFIC DIVISION			
ASSISTANT CITY ENG.			DATE: 5/13/71

SEWER PLAN & PROFILE
TRACT 4244
SANITARY SEWER

PROJECT NO. **S-832**
SHEET **1** OF **2**
FILE NO. **3386**

HORIZ. SCALE: 1" = 40'
VERT. SCALE: 1" = 4'



6x18" N-S Per Plan 1077
STA. 0400 M.H. #9
E'ly

SEWER CURVE DATA
R=100'
Δ=08°00'
T=6.99'
L=13.96'

Approved By: <i>Howard A. Orson</i> 4-28-71 Chief Public Utility Engineer Date		J. F. DAVIDSON ASSOCIATES CIVIL ENGINEERS - SURVEYORS - PLANNERS RIVERSIDE, CALIFORNIA APPROVED BY: <i>Robert J. Davidson</i> DATE: 5-18-71 R.E. No. 13699 w.o. 2766 FOR Miller Const. Co. F.B. 1029/5		CITY OF RIVERSIDE, CALIFORNIA DEPARTMENT OF PUBLIC WORKS APPROVED BY: <i>William S. Davidson</i> DIRECTOR OF PUBLIC WORKS DATE: 5/13/71		SEWER PLAN & PROFILE TRACT 4244 SANITARY SEWER PROJECT NO. S-832 SHEET 22 OF 22 FILE NO. 3386	
DESIGNED BY: A.W. DRAWN BY: M.C.C. CHECKED BY: B.C.		REVISIONS: 1. W.S. 5/11/71 2. W.S. 5/11/71		OFFICE ENGINEER: E.M.W. 5/14/71 PARK DEPARTMENT: [] TRAFFIC DIVISION: [] ASSISTANT CITY ENG.: []		HORIZ. SCALE: 1" = 40' VERT. SCALE: 1" = 4'	