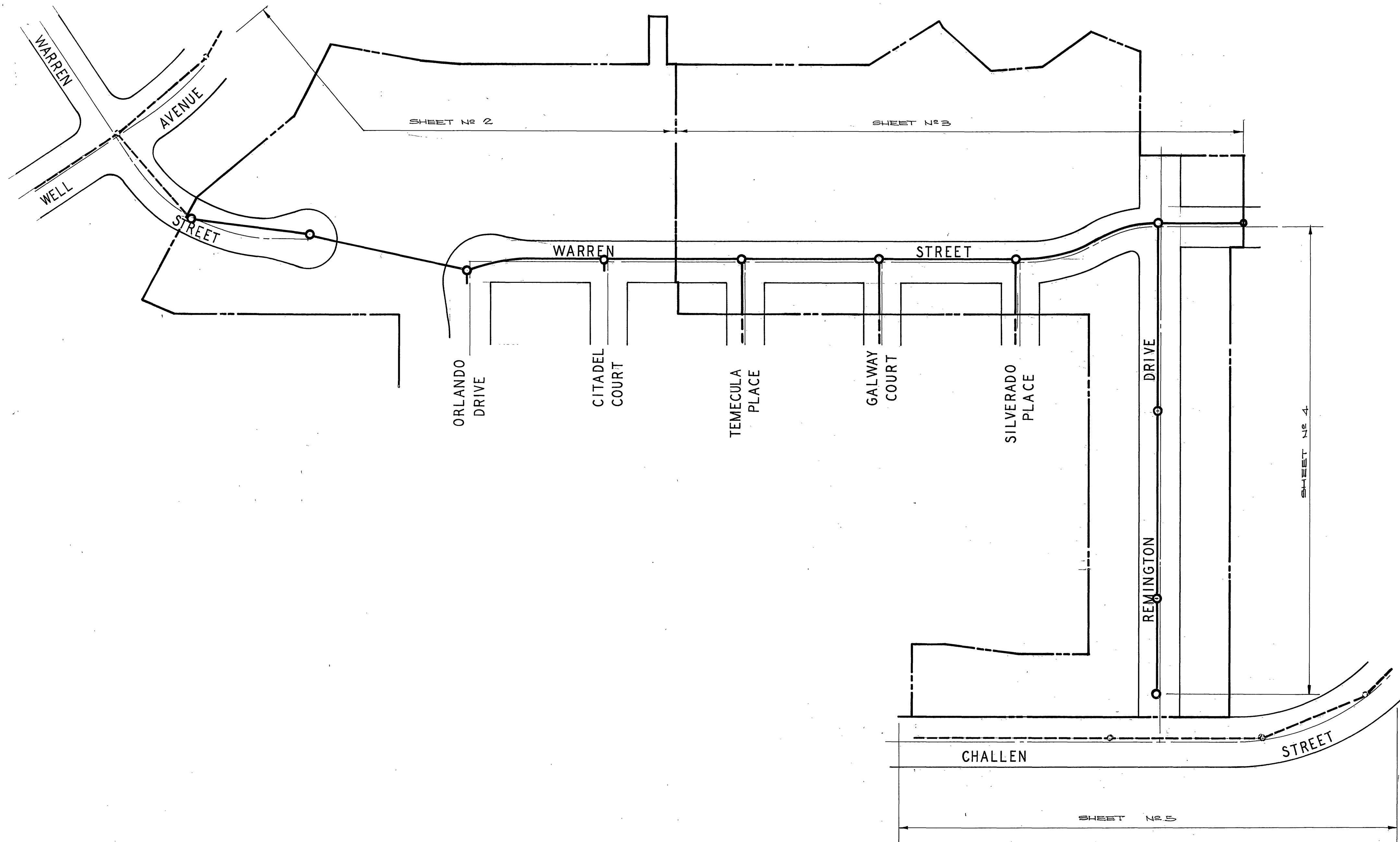


INDEX MAP



SPECIAL NOTE

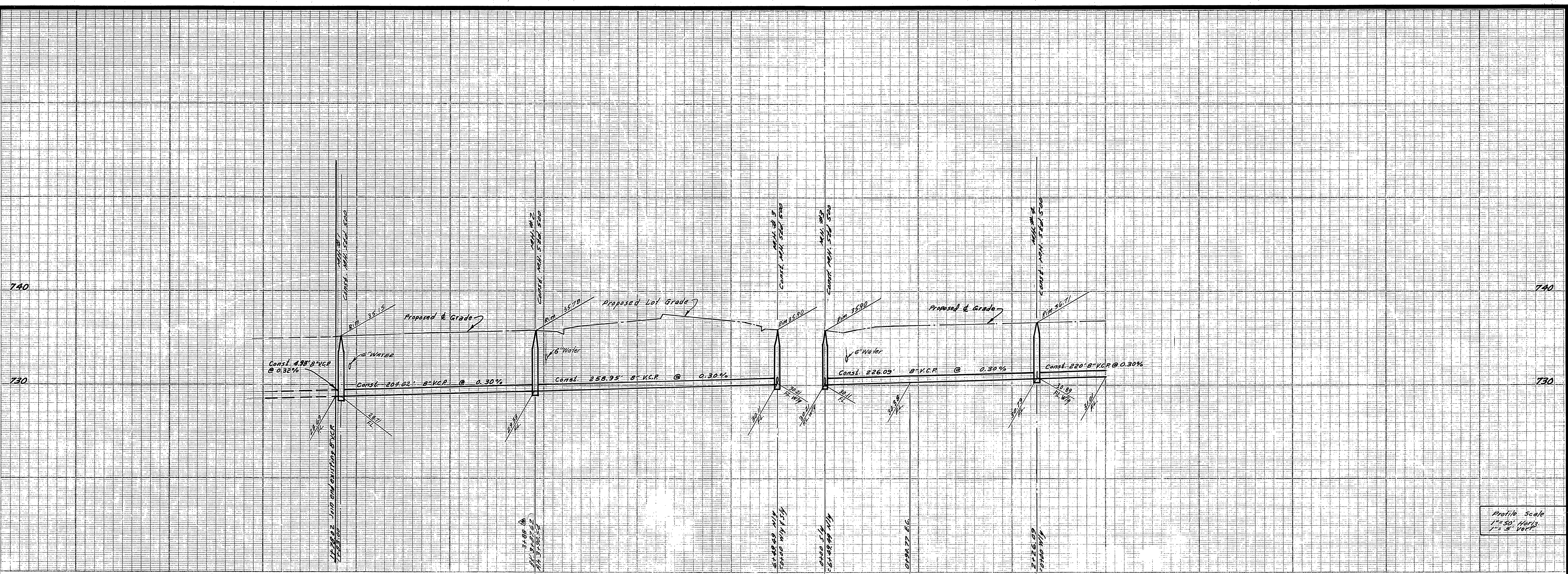
AT ALL SEWER MAIN OR LATERAL CROSSINGS OF WATER MAINS WITH THIS SYMBOL (⊙) SHALL BE CONSTRUCTED WITH TYPE "B" ENCASEMENT PER PUBLIC UTILITIES DEPT. STD. DWG. No. CWD-023 FOR 4 1/2 FEET ON EACH SIDE OF THE WATER MAIN OR WITH CAST IRON SEWER PIPE 4 1/2 FEET ON EACH SIDE OF WATER MAIN.
 AT ALL SEWER MAIN OR LATERAL CROSSINGS OF WATER MAINS WITH THIS SYMBOL (⊙) SHALL BE CONSTRUCTED PER TYPE "C" ENCASEMENT PER PUBLIC UTILITIES DEPT. STD. DWG. No. CWD-023 FOR 4 1/2 FEET ON EACH SIDE OF THE WATER MAIN OR WITH CAST IRON SEWER PIPE 4 1/2 FEET ON EACH SIDE OF WATER MAIN.

Note:
 SEE SHEET No 2 FOR GENERAL NOTES & QUANTITY ESTIMATE

AS BUILT 11-17-71 glw

Approved By *Howard K. Orson*
 General Superintendent of Civil Engineering - Water Dept.
 Date 5-12-71

ALBERT A. WEBB ASSOCIATES CIVIL ENGINEERS RIVERSIDE, CALIFORNIA APPROVED BY <i>R. D. Webb</i> DATE 12/11/70 R.E. No. 2876 W.O. 70-237 FOR Woodhaven Developers F.B. 10/6	CITY OF RIVERSIDE, CALIFORNIA DEPARTMENT OF PUBLIC WORKS APPROVED BY <i>William S. Gardner</i> DIRECTOR OF PUBLIC WORKS DATE 5/21/71	SEWER PLAN AND PROFILE	PROJECT NO.
		INDEX MAP	S-836
DESIGNED BY _____ DRAWN BY <i>V.S.</i> CHECKED BY <i>REC. 10</i>	MARK _____ REVISIONS _____ APPR. DATE _____	TRACT 4146	SHEET 1 OF 5
		HORIZ. SCALE: 1" = 100'	FILE NO. 10-237-B



Profile Scale
1" = 50' Horiz.
1" = 5' Vert.

BENCH MARK

- Elev. 737.850, 5/4 on SW curb return Sequoia St. & Calif. Ave. City R.B. 550/53
- Elev. 752.297, Chisel X on the conc. H.W. man. El. end south side Challen Ave. Sta. 39+60.1

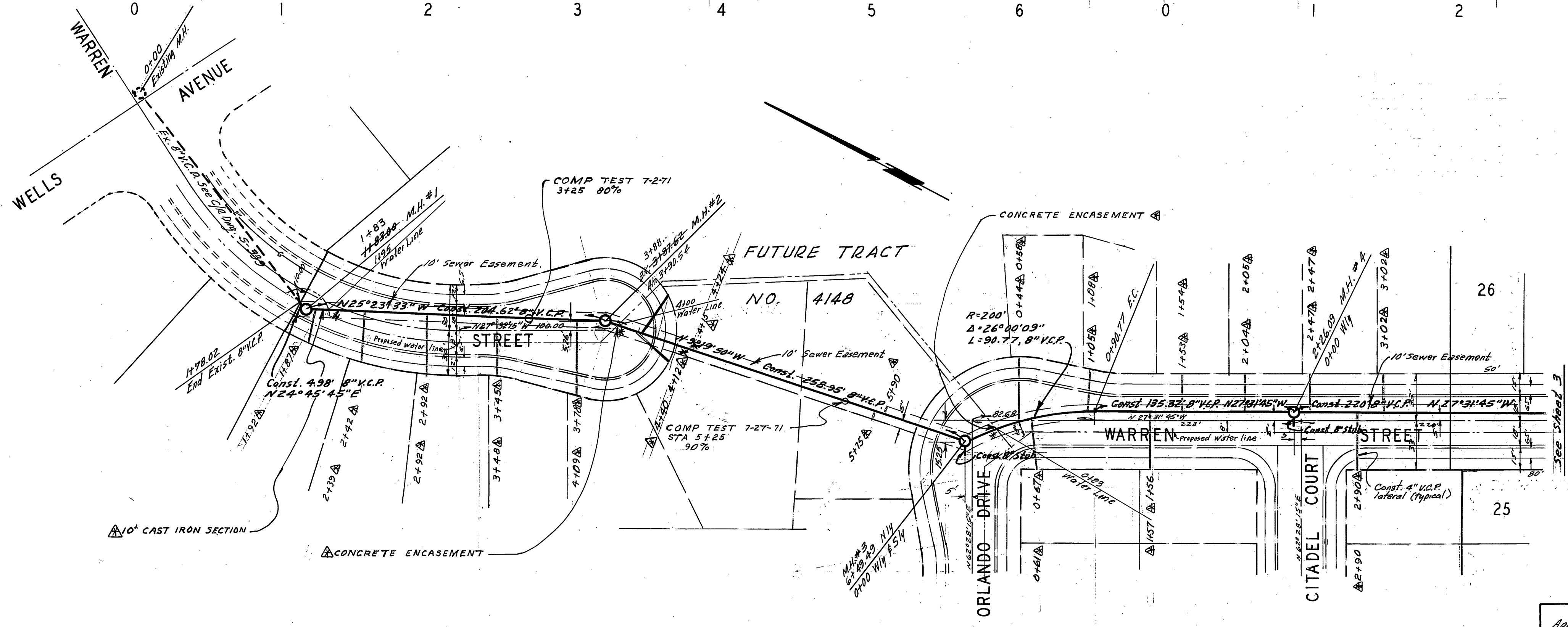
Joints shall be in conformance to ASTM Specifications C-425-64 Type III or to ASTM Specifications C-574-66-7 (Band Seal) with certain exceptions or modifications on file with the City Engineer. (Band seal not to be used in curved sewer)

of the owner _____ at direction _____ proposed _____, all pipes to be laid flat.

10. The quantity estimate shown hereon is for information only and the City assumes no responsibility for its accuracy.

QUANTITY ESTIMATE

8" Vitrified Clay Pipe	2,729	L.F.
4" Vitrified Clay Pipe	2,472	L.F.
4" x 8" Wye	69	Ez.
Manhole Standard No. 500	10	Ez.
Cleanout Standard No. 560	2	Ez.
4" x 8" Saddle	10	Ez.
Pavement Replacement	140	S.F.



AS BUILT 11-17-71 gsw

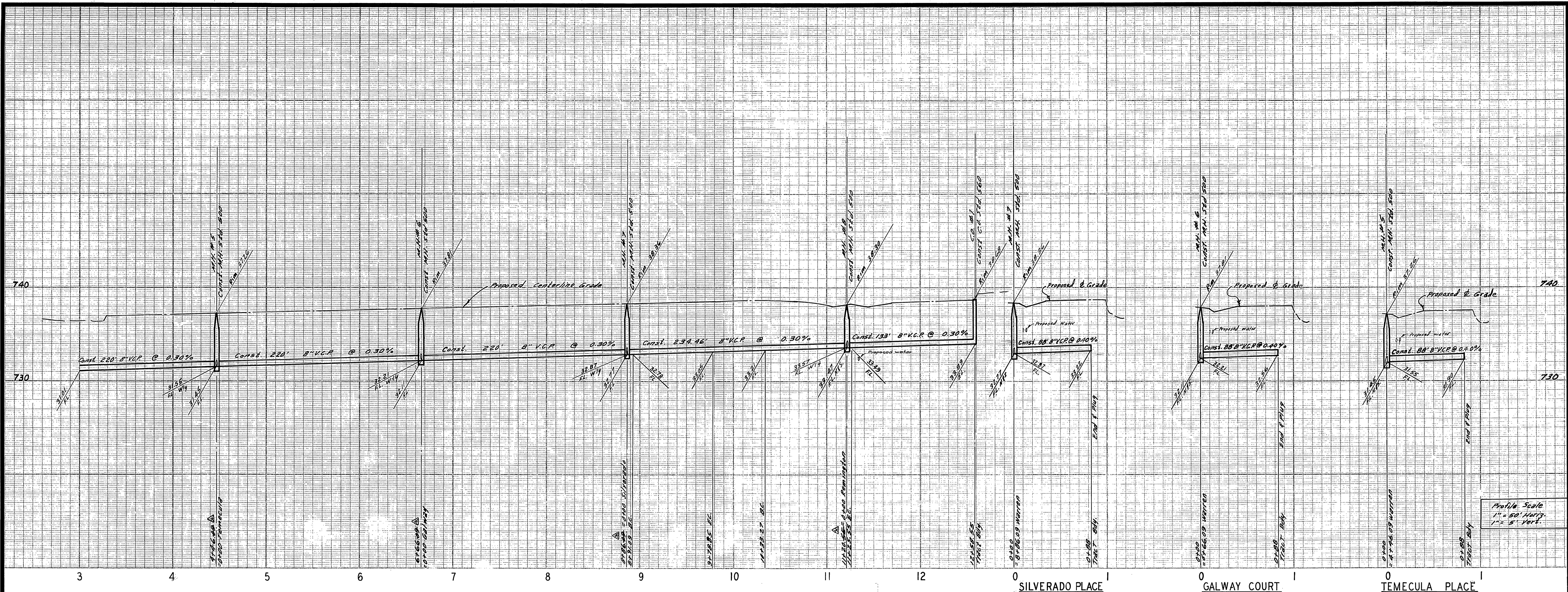
ALBERT A. WEBB ASSOCIATES
CIVIL ENGINEERS
RIVERSIDE, CALIFORNIA
APPROVED BY: *Ernest N. Webb* DATE 12/14/73
R.E. No. 9876
W.O. 28-237 FOR: Woodhaven Developers F.B. 78/9

Approved by: *Harold H. Cream*
General Superintendent of Civil Engineer - Water Dept.
Date 5-12-71

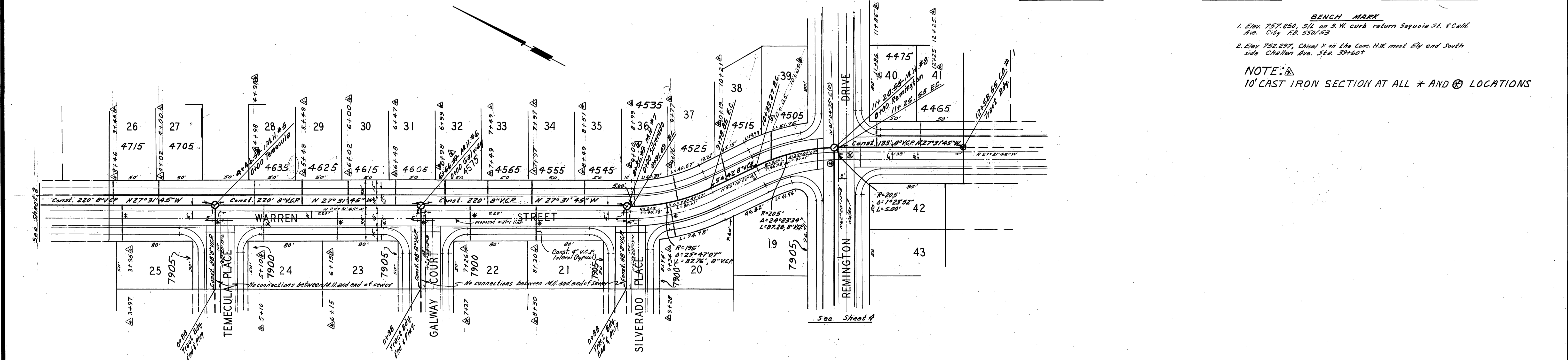
APPROVED BY	DATE	APPROVED BY
PRINCIPAL ENGINEER	5/17/71	<i>Harold H. Cream</i>
PARK DEPARTMENT		DIRECTOR OF PUBLIC WORKS
TRAFFIC DIVISION		
CHIEF PUB. WKS. ENGR.		5/21/71

CITY OF RIVERSIDE, CALIFORNIA
PUBLIC WORKS DEPARTMENT
SEWER PLAN AND PROFILE
WARREN STREET
TRACT NO. 4146
SCALE: 1" = 50'

ACCOUNT No.
DRAWING NUMBER
S-836
SHEET 2 OF 5
70-237-B



Profile Scale
1" = 50' Horiz.
1" = 5' Vert.



BENCH MARK
 1. Elev. 757.850, 5/4 on S.W. curb return Sequoia St. & Calif. Ave. City R.B. 550153
 2. Elev. 752.297, Chisel X on the Conc. H.W. man. Ely and South side Chalfon Ave. Sta. 394605

NOTE:
 10" CAST IRON SECTION AT ALL * AND ⊗ LOCATIONS

AS BUILT 11-17-71 g/w

ALBERT A. WEBB ASSOCIATES
 CIVIL ENGINEERS
 RIVERSIDE, CALIFORNIA
 APPROVED BY: *Ernest N. Webb* DATE 11/11/70
 R.E. No. 2876
 W.O. 70-237 FOR: Wood Haven Developers F.B. 1719

Approved By: *Howard A. Orman*
 General Superintendent & Chief Engineer - Water Dept.
 Date 5-12-71

CITY OF RIVERSIDE, CALIFORNIA
 PUBLIC WORKS DEPARTMENT

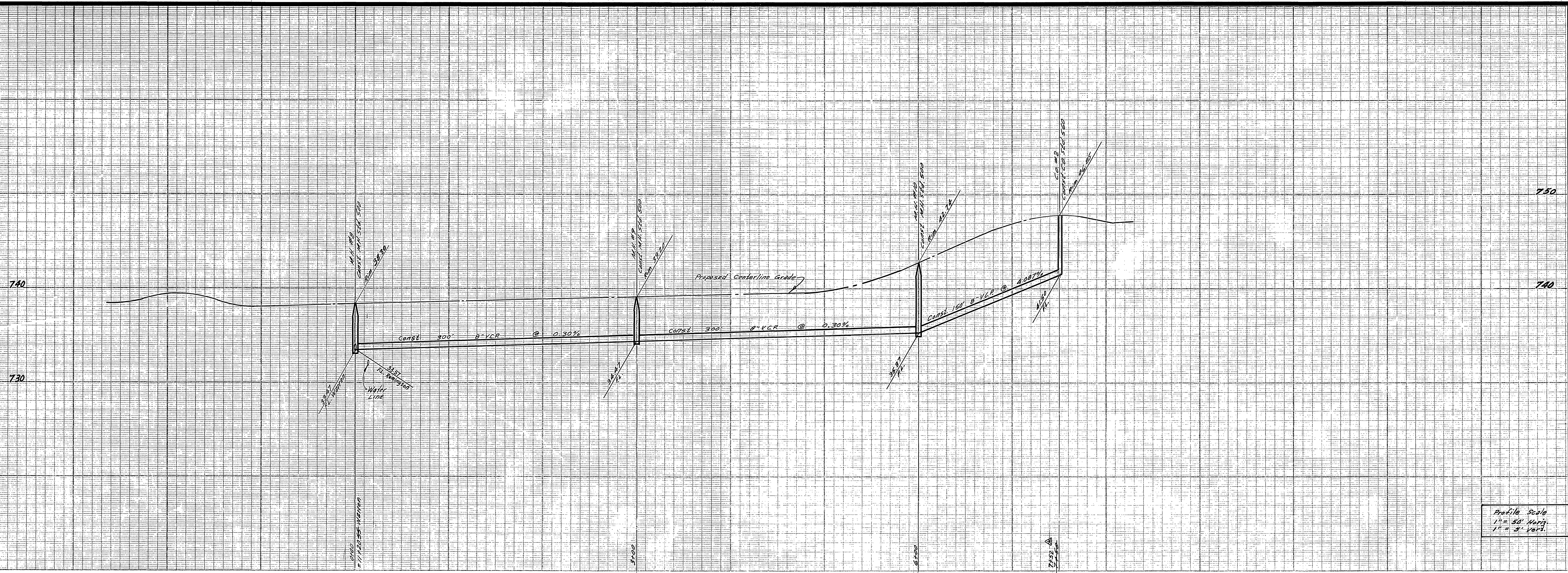
APPROVED BY	BY	DATE	APPROVED BY
PRINCIPAL ENGINEER	<i>W. S. Gardner</i>	5/11/71	<i>W. S. Gardner</i>
PARK DEPARTMENT			DIRECTOR OF PUBLIC WORKS
TRAFFIC DIVISION			
CHIEF PUB. WKS. ENGR.			

DESIGNED BY REC. DRAWN BY BEL. CHECKED BY REC. BEL.

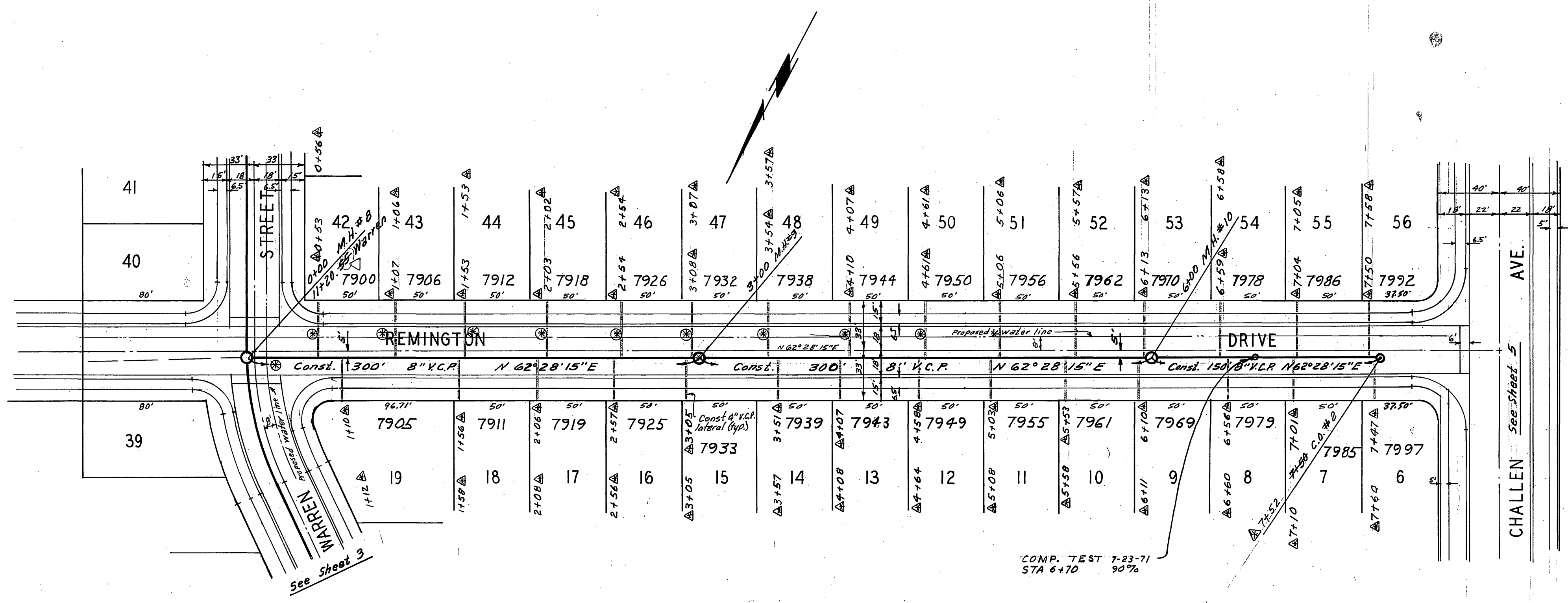
SEWER PLAN AND PROFILE
 WARREN STREET
 TEMECULA PLACE GALWAY COURT
 SILVERADO PLACE
 TRACT NO. 4146

ACCOUNT No.
 DRAWING NUMBER
S-836
 SHEET 3 OF 5
 70-237-B

SCALE: 1" = 50'



Profile Scale
 1" = 50' Horiz.
 1" = 5' Vert.



BENCH MARK
 1. Elev. 757.850, SLL on S.W. curb return Sequoia St. & Calif. Ave. City R.B. 550/53
 2. Elev. 752.297, Chisel X on the conc. HW most Ely end south side Challen Ave. Sta. 39+60.2

NOTE :
 10' CAST IRON SECTION AT ALL ✕ AND ⊕ LOCATIONS

AS BUILT 11-17-71

ALBERT A. WEBB ASSOCIATES
 CIVIL ENGINEERS
 RIVERSIDE, CALIFORNIA
 APPROVED BY: *[Signature]* DATE 12/1/70
 R.E. No. 9876

SEWER ENCLOSURE REQUIREMENTS REVISED per H.R.C. 5-24
 REVISIONS: *[Signature]* H.R.C. 5-24
 DESIGNED BY: REC DRAWN BY: BEL CHECKED BY: REC

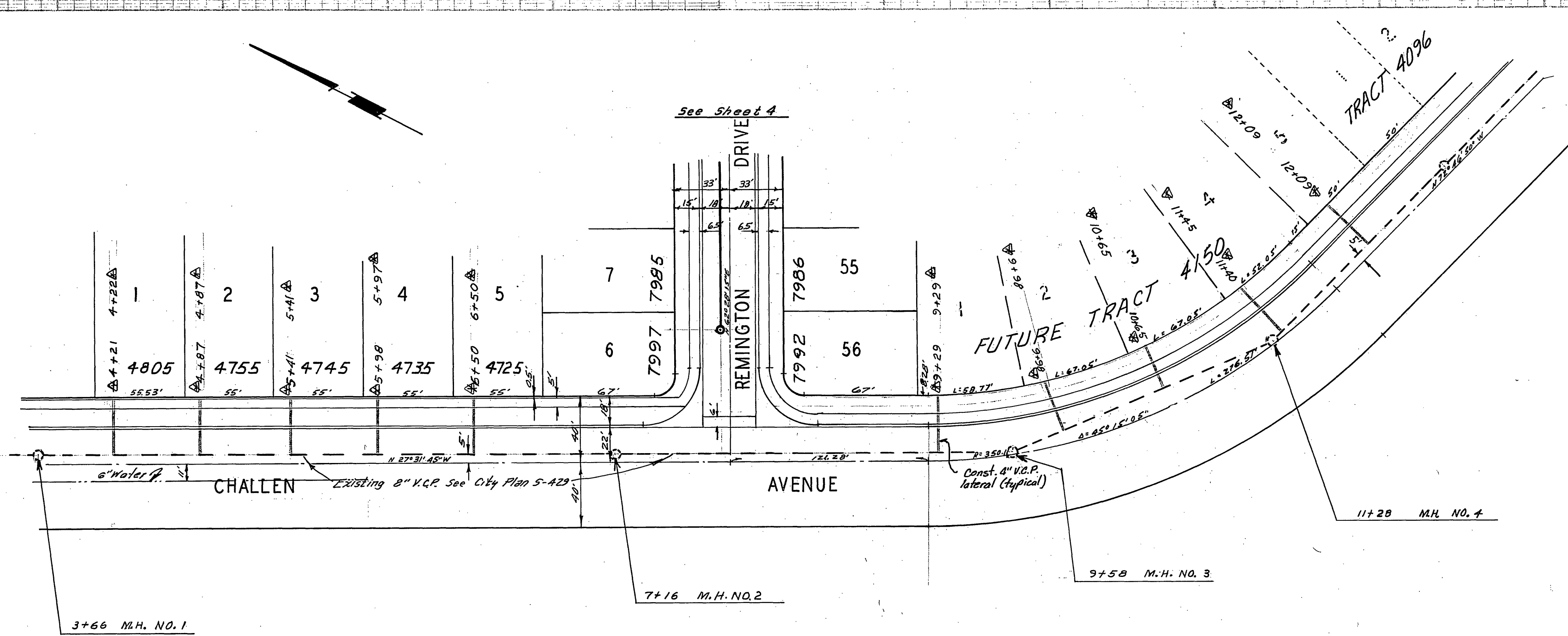
Approved By: *[Signature]*
 General Superintendent of Civil Engineer - water Dept.
 Date 5-12-71

CITY OF RIVERSIDE, CALIFORNIA
 PUBLIC WORKS DEPARTMENT

APPROVED BY: *[Signature]* DATE 5/17
 PRINCIPAL ENGINEER
 PARK DEPARTMENT
 TRAFFIC DIVISION
 CHIEF PUB. WKS. ENGR.

SEWER PLAN AND PROFILE
 REMINGTON DRIVE
 TRACT NO. 4146
 SCALE: 1" = 50'

ACCOUNT No.
 DRAWING NUMBER
S-836
 SHEET 4 OF 5
 70-237-B



BENCH MARK
 1. Elev. 757.850, 5/11 on SW curb return Sequoia St. & Challen Ave. City F.B. 558/53.
 2. Elev. 752.297, Challen X in the conc. R.W. most Ely and south side Challen Ave. Sta. 39+60.

NOTES:
 1. 4x8 VYES AT ALL LATERALS ON TRACT 4150 & TRACT 4146 ON CHALLEN AVE.

AS BUILT 11-17-71 *glw*

ALBERT A. WEBB ASSOCIATES
 CIVIL ENGINEERS
 RIVERSIDE, CALIFORNIA
 APPROVED BY *[Signature]* DATE 12/11/70
 R.E. No. 2876

Approved By *[Signature]*
 General Superintendent Chief Engineer - Water Dept.
 Date 5-12-71

CITY OF RIVERSIDE, CALIFORNIA
 PUBLIC WORKS DEPARTMENT
 APPROVED BY *[Signature]*
 DIRECTOR OF PUBLIC WORKS
 DATE 5/21/71

SEWER PLAN AND PROFILE
 CHALLEN AVENUE
 TRACT NO 4146

ACCOUNT No.
 DRAWING NUMBER
S-836
 SHEET 5 OF 5
 70-237-B

W.O. 237 FOR WOODLAWN Dev. F.B. 1218 DESIGNED BY DRAWN BY BEL CHECKED BY DEC 81