

WYBOURN AVENUE

QUANTITY ESTIMATE	
2" V.C.P.	1,140 LF
8" V.C.P.	1,462 LF
4" x 1/2" OR T2ES	35 EA
MANHOLES	4 EA
CLEANOUT	3 EA
REMOVE EXIST CLEANOUT	1 EA

NOTE:
THE CITY HAS NOT CHECKED THIS QUANTITY ESTIMATE AND APPROVAL OF THESE PLANS DOES NOT CONFIRM THE ACCURACY OF THE ESTIMATE.

BENCH MARK: F.B. 706/46
R.R. SPIKE IN POLE 6654894-N ON S.E. COR
HILLMORE & INDIANA
ELEV. 740.179

- GENERAL NOTES
- CONSTRUCTION SHALL BE IN ACCORDANCE WITH STANDARD SPECIFICATION FOR PUBLIC WORKS CONSTRUCTION, 1970 EDITION, AND CITY OF RIVERSIDE STANDARD DRAWINGS.
 - IT SHALL BE THE RESPONSIBILITY OF THE CONTRACTOR TO CLEAR THE RIGHT OF WAY, IN ACCORDANCE WITH THE PROVISIONS OF THE LAWS, IT AFFECTS EACH UTILITY INCLUDING IRRIGATION LINES AND APPURTENANCES AND AT NO COST TO THE CITY.
 - LOCATION OF TEES AND LATERALS TO BE DETERMINED AT THE DIRECTION OF THE OWNER.
 - MANHOLE FRAMES AND COVERS TO BE SET TO PROPOSED PAVEMENT GRADES.
 - LATERALS ARE TO BE 4" AND EXTENDED TO PROPERTY LINE.
 - PRIOR TO CONSTRUCTION OF SEWER, CONTRACTOR IS TO EXPOSE EXISTING SEWER AND CONTACT ENGINEER FOR VERIFICATION OF EXISTING ELEVATIONS.

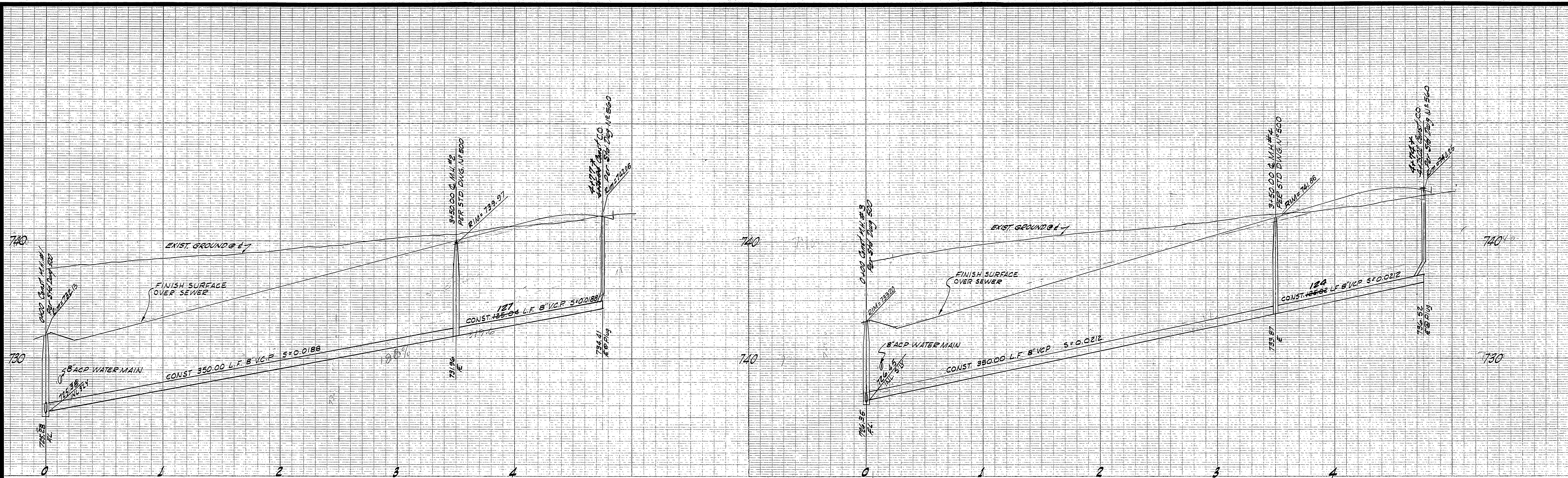
NOTICE TO CONTRACTOR

THE EXISTENCE AND LOCATION OF ANY UNDERGROUND UTILITY, EXCEPT STRUCTURES SHOWN ON THESE PLANS ARE OBTAINED BY A SEARCH OF THE AVAILABLE RECORDS. TO THE BEST OF OUR KNOWLEDGE THERE ARE NO EXISTING UTILITIES EXCEPT AS SHOWN ON THESE PLANS.

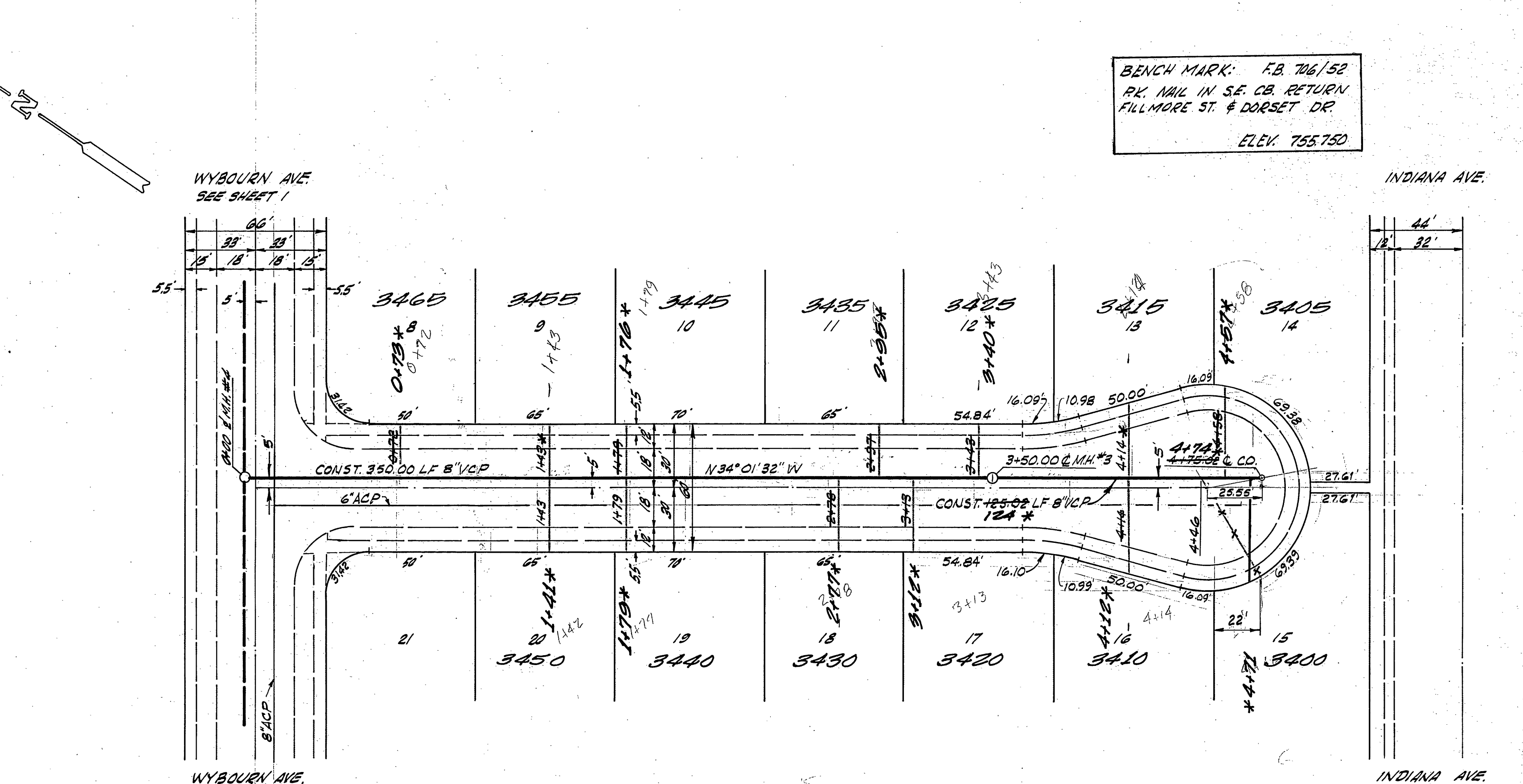
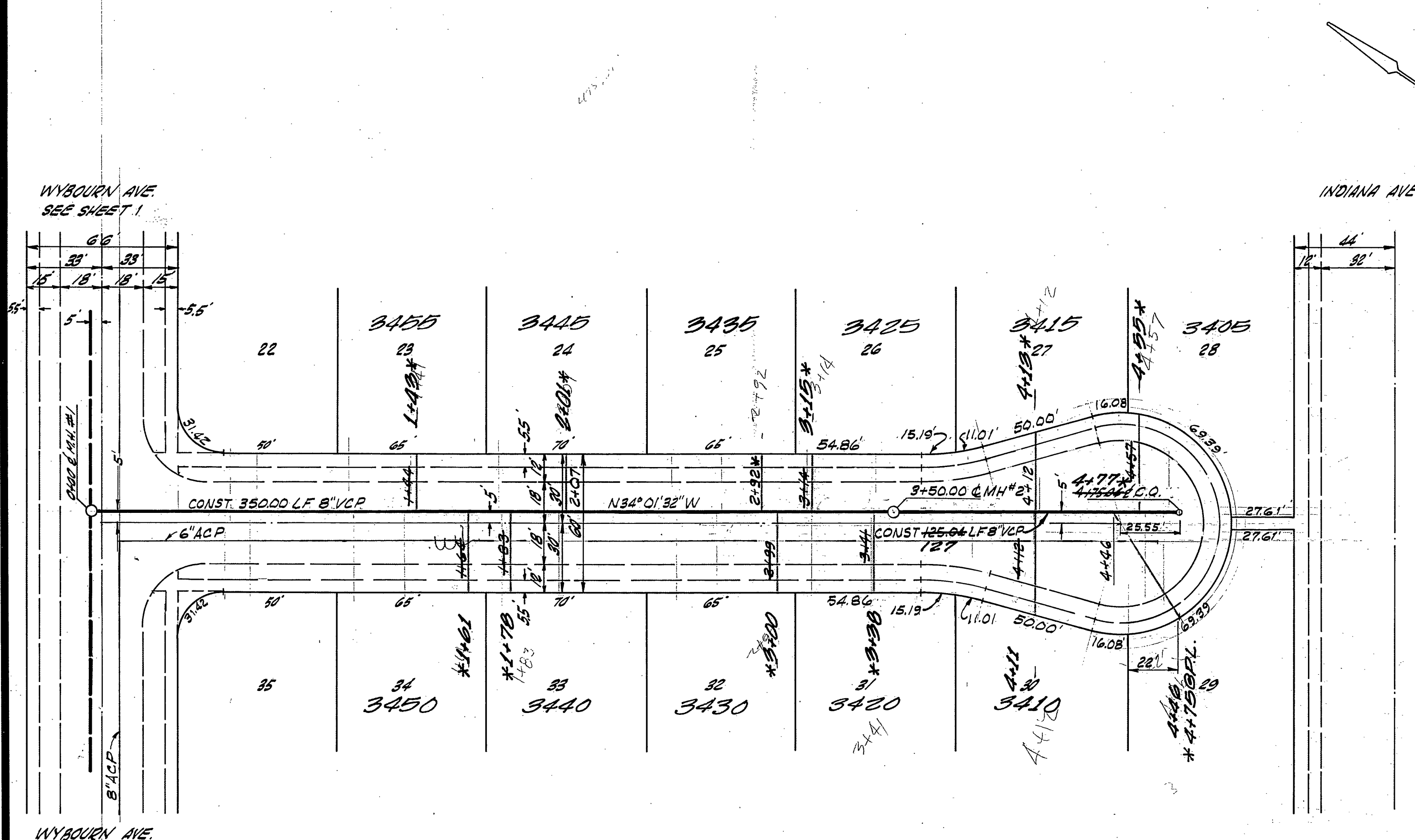
THE CONTRACTOR IS REQUIRED TO TAKE DUE PRECAUTIONARY MEASURES TO PROTECT THE UTILITY LINES SHOWN AND ANY OTHER LINES NOT OF RECORD OR NOT SHOWN ON THESE PLANS.

PREPARED IN THE OFFICES OF VOORHEIS-TRINDLE-NELSON 2801 CAMPUS DRIVE IRVINE, CALIFORNIA APPROVED BY: Jack Mahoney JACK MAHONEY R.E. 14825 DATE 2-7-71	MARK REVISIONS APPR. DATE DESIGNED BY DRAWN BY CHECKED BY	CITY OF RIVERSIDE, CALIFORNIA DEPARTMENT OF PUBLIC WORKS	TRACT NO 3651 SEWER PLAN & PROFILE WYBOURN AVENUE FROM 166' TO 673' EAST OF FENSMUIR ST.	PROJECT NO. S-837 SHEET 1 OF 2
		APPROVED BY OFFICE ENGINEER PARK DEPARTMENT TRAFFIC DIVISION ASSISTANT CITY ENG.	BY DATE 6/10/71 6/11/71 6/8/71	APPROVED BY DIRECTOR OF PUBLIC WORKS DATE 6-9-71

*05 built 7.22.71 norm



BENCH MARK: F.B. 766/52
 P.K. MAIL IN S.E. CORNER
 FULLMORE ST. & DORSET DR.
 ELEV. 755.750



GLASGOW

CIRCLE

SPARROW

CIRCLE

*26 built 7-22-71 norm

PREPARED IN THE OFFICES OF VOORHEES-TRINDLE-NELSON 2201 CAMPUS DRIVE IRVINE, CALIFORNIA		CITY OF RIVERSIDE, CALIFORNIA DEPARTMENT OF PUBLIC WORKS		TRACT N ^o 3651 SEWER PLAN & PROFILE GLASGOW CIRCLE SPARROW CIRCLE		PROJECT NO. S-837	
APPROVED BY: <i>Jack Mahoney</i> JACK MAHONEY R.O.E. 14325		APPROVED BY: <i>[Signature]</i> DIRECTOR OF PUBLIC WORKS		DATE: 6-9-71		SHEET 2 OF 2	
2-7-71 DATE		MARK REVISIONS APPR. DATE		DESIGNED BY: DRAWN BY: CHECKED BY:		HORIZ. SCALE: 1" = 40' VERT. SCALE: 1" = 4'	