

SCALE 1" = 200'

GENERAL NOTES

- Construction shall be in accordance with the City of Riverside, Department of Public Works, Standard Specifications 1970 edition and Standard Drawings.
- It shall be the responsibility of the contractor to clear the right of way in accordance with the provisions of the law as it affects each utility including irrigation lines and appurtenances and at no cost to the City.
- Joints shall be in conformance to ASTM Specifications C-425-64 Type I or III or to ASTM Specifications C-594-64 Type I (Band Seal) with certain exceptions or modifications on file with the City Engineer. Band Seal not to be used in curved portion of sewer.
- Pipe shall be bedded per Case I, Standard Drawing No. 452, unless otherwise specified on plan.
- Location of wyes and laterals to be determined at the direction of the sewer.
- All stubs and laterals to be constructed in accordance with Standard Drawing No. 562. Stubs shall be plugged and capped.
- Manhole frames and covers to be set to proposed pavement grades.
- Laterals are to be 4" and extended to property line. All wyes to be laid flat.
- Prior to construction of sewer, Contractor is to expose existing sewer and contact Engineer for verification of existing elevations.
- The quantity estimate shown hereon is for informational only and the City assumes no responsibility for its accuracy.

QUANTITY ESTIMATE

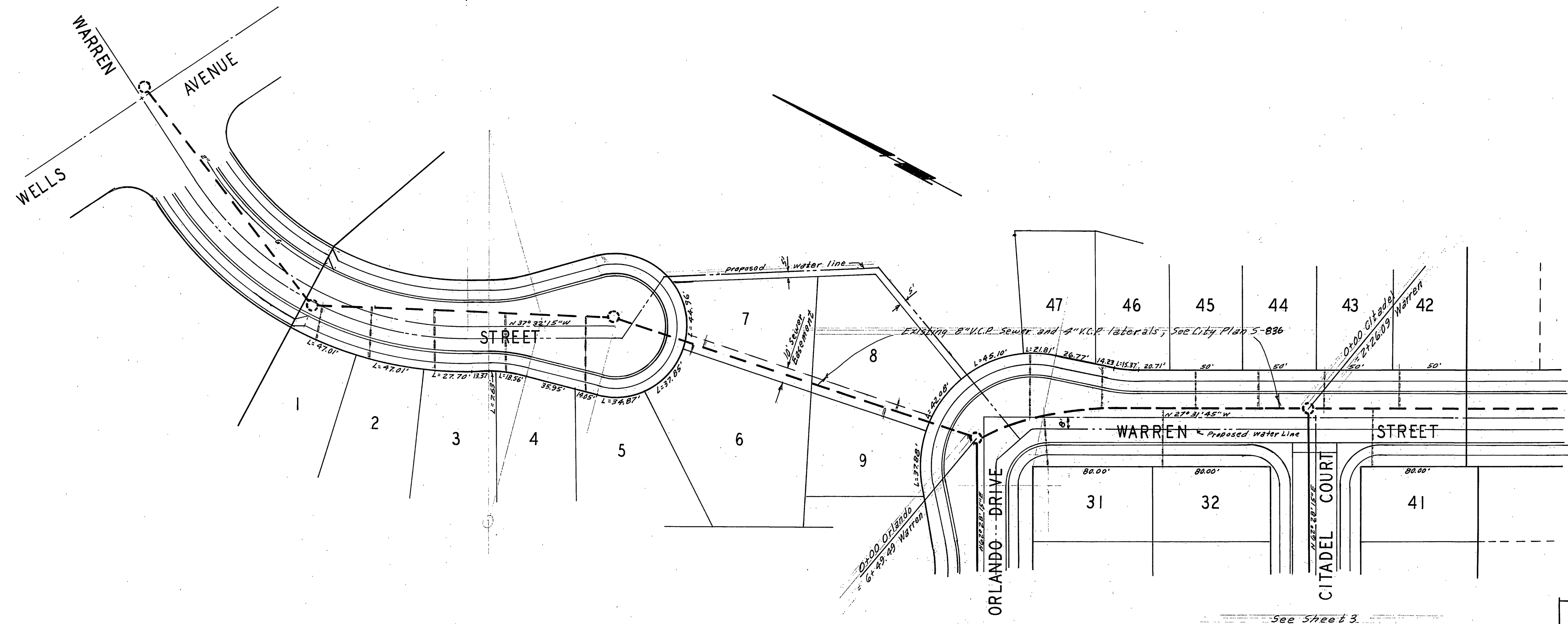
Manhole Standard No. 500	3	Ea.
Drop Manhole Standard No. 502		Ea.
Cleanout Standard No. 560		Ea.
8" Vitrified Clay Pipe	779	L.F.
4" Vitrified Clay Pipe	1,075	L.F.
4" x 8" Wyes	33	Ea.

SPECIAL NOTE

AT ALL SEWER MAIN OR LATERAL CROSSINGS OF WATER MAINS SHOWN, SEWER MAIN SHALL BE CONSTRUCTED PER TYPE "C" ENCASUREMENT PER PUBLIC UTILITIES DEPT. STD. DWG. No. CWD-023 FOR 4 1/2 FEET ON EACH SIDE OF THE WATER MAIN OR WITH CAST IRON SEWER PIPE 4 1/2 FEET ON EACH SIDE OF WATER MAIN.

AS BUILT 11-17-71 gfw

ALBERT A. WEBB ASSOCIATES CIVIL ENGINEERS RIVERSIDE, CALIFORNIA APPROVED BY: <i>[Signature]</i> DATE: 12/24/70 R.E. No. 9276		CITY OF RIVERSIDE, CALIFORNIA DEPARTMENT OF PUBLIC WORKS APPROVED BY: <i>[Signature]</i> DATE: 11/71 DIRECTOR OF PUBLIC WORKS		PROJECT NO. <b>S-838</b>
W.O. 70-239 FOR WOODHAVEN DEK DESIGNED BY: _____ DRAWN BY: <i>Bgl</i> CHECKED BY: <i>[Signature]</i>		SEWER PLAN AND PROFILE INDEX SHEET TRACT NO. 4148 SCALE: AS SHOWN		SHEET <b>1</b> OF <b>3</b> FILE NO. 70-239-B



**BENCH MARK**  
 1. Elev. 757.850 SLL on SW curb return Segovia St. & Calif. Ave. City F.B. 650/53.  
 2. Elev. 752.297, Chisel X on the conc. H.W. manhole Ely and South side Challen Ave. Sta. 39+60E.

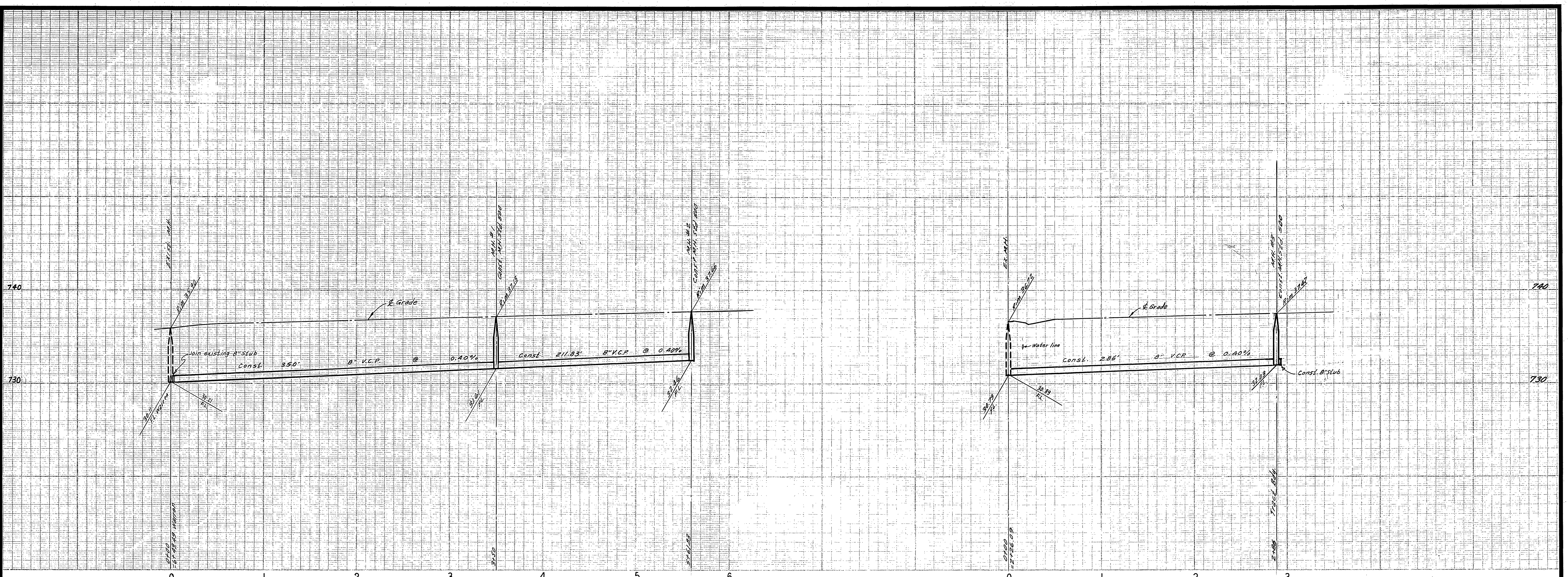
Approved By *Howard R. O'Brien*  
 General Superintendent Chief Engineer - Water Dept.  
 Date 6-2-71

ALBERT A. WEBB ASSOCIATES  
 CIVIL ENGINEERS  
 RIVERSIDE, CALIFORNIA  
 APPROVED BY *Albert A. Webb* DATE 12/2/70  
 R.E. No. 9876

CITY OF RIVERSIDE, CALIFORNIA  
 PUBLIC WORKS DEPARTMENT  
 APPROVED BY *[Signature]*  
 DIRECTOR OF PUBLIC WORKS  
 DATE 6-11-71

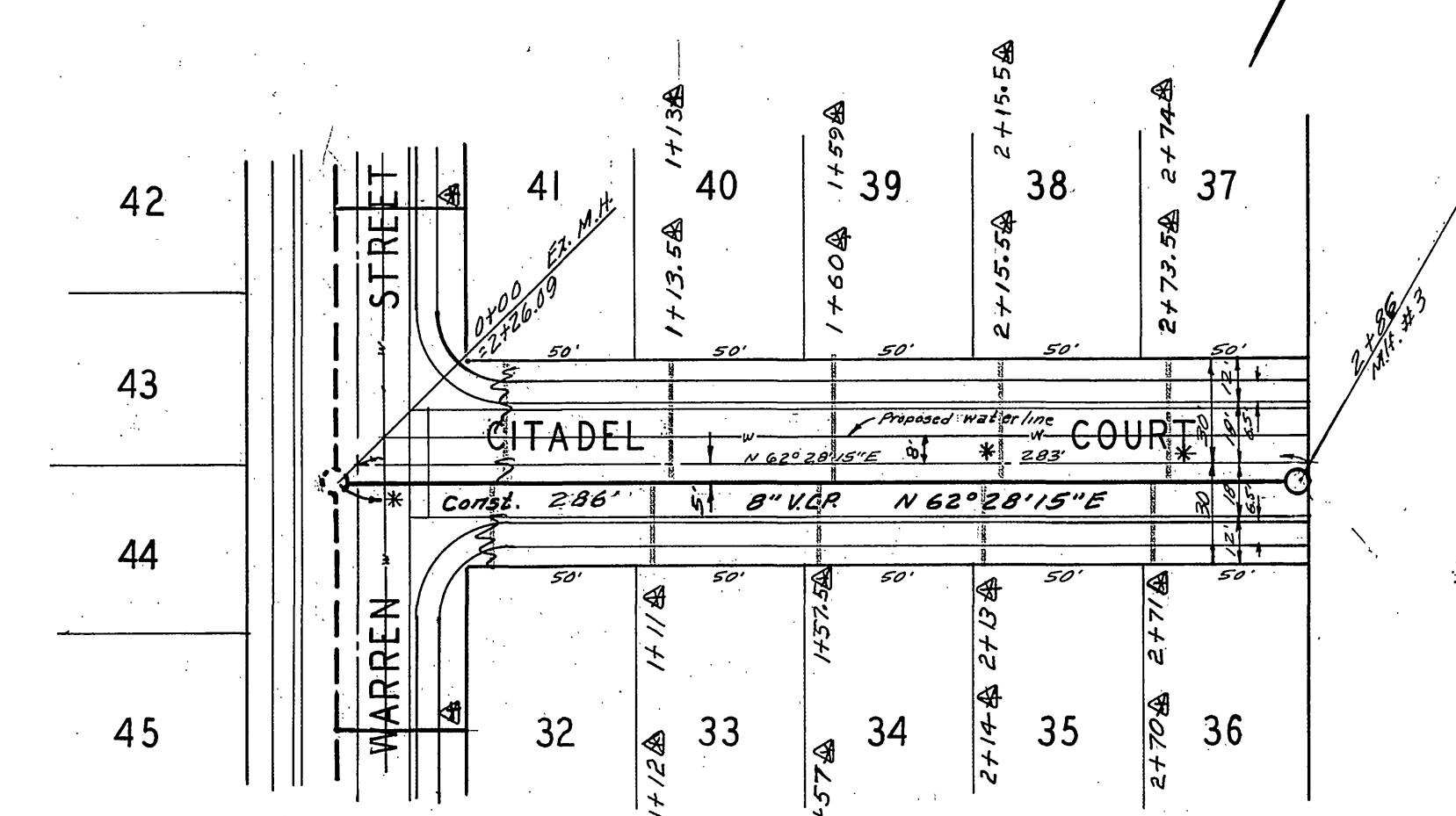
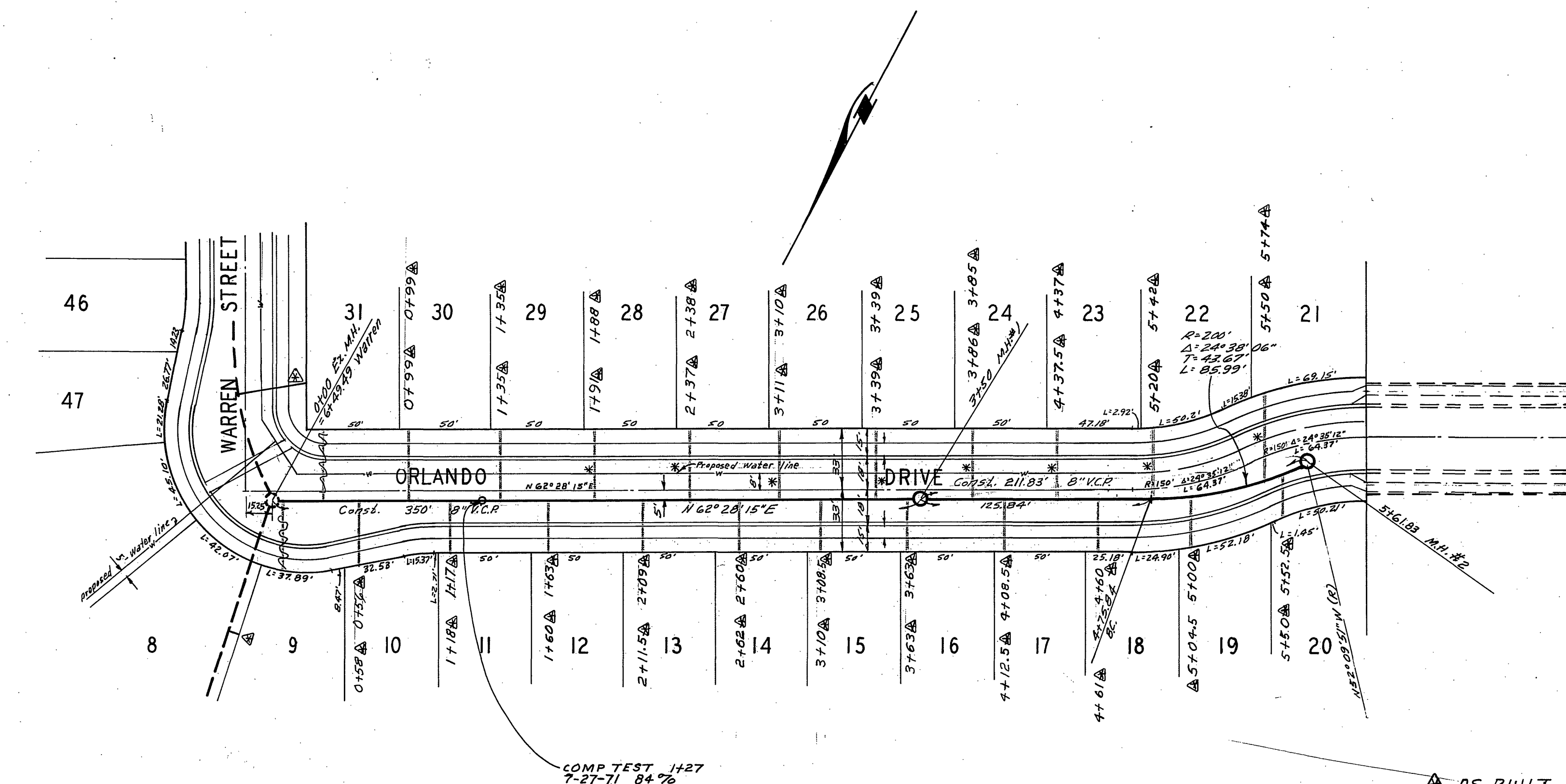
SEWER PLAN AND PROFILE  
 WARREN STREET  
 TRACT NO. 4148  
 SCALE: 1" = 50' Horiz., 1" = 5' Vert.  
 ACCOUNT No. DRAWING NUMBER  
 S-838  
 SHEET 2 OF 3  
 70-239-B

W.D. 70-239 FOR: Woodhaven Developers F.B. 1018 DESIGNED BY DEC DRAWN BY BEL CHECKED BY DEC



**BENCH MARK**  
 1. Elev. 757.850, S/L on SW curb return Sequoia St. @ Calif. Ave. City FA 550/53  
 2. Elev. 752.297, Chisel x on the conc. NW mast Ely and South side Challen Ave. Sta. 39+60

**NOTE:**  
 1. CAST IRON SECTION AT ALL \* LOCATIONS



COMP TEST 1427  
 7-27-71 84%

AS BUILT 11-17-71 gfw

Approved By *Edward J. Orman*  
 General Superintendent of Civil Engineer - Water Dept.  
 Date 6-2-71

ALBERT A. WEBB ASSOCIATES  
 CIVIL ENGINEERS  
 RIVERSIDE, CALIFORNIA  
 APPROVED BY *P. N. Will* DATE 12/21/70  
 R.E. No. 9876

MARK REVISIONS APPR. DATE  
 DESIGNED BY DEC DRAWN BY BEL CHECKED BY REC

CITY OF RIVERSIDE, CALIFORNIA  
 PUBLIC WORKS DEPARTMENT  
 APPROVED BY *[Signature]* DATE 6-1-71  
 PRINCIPAL ENGINEER C.W.W. 6/1/71  
 PARK DEPARTMENT  
 TRAFFIC DIVISION  
 CHIEF PUB. WKS. ENGR. Bill 6/1/71

SEWER PLAN AND PROFILE  
 ORLANDO DRIVE  
 CITADEL COURT  
 TRACT NO. 4148  
 SCALE: 1" = 50' Horiz., 1" = 5' Vert.

ACCOUNT No.  
 DRAWING NUMBER  
**5-838**  
 SHEET 3 OF 3  
 70-239-B