

- GENERAL NOTES**
- Construction shall be in accordance with the City of Riverside, Department of Public Works, Standard Specifications No. 461 and Standard Drawings.
 - It shall be the responsibility of the contractor to clear the right of way in accordance with the provisions of the law as it affects each utility including irrigation lines and appurtenances and at no cost to the City.
 - Joints shall be in conformance to ASTM Specifications C-425-64 Type I or II or to ASTM Specifications C-398-66 (Open End) with certain exceptions or modifications on file with the City Engineer.
 - Pipe shall be bedded per Case 1, Standard Drawing No. 452, unless otherwise specified on plan.
 - Location of wyes and laterals to be determined at the direction of the owner.
 - All stubs and laterals to be constructed in accordance with Standard Drawing No. 362. Stubs shall be plugged and capped, all wyes to be laid flat.
 - Manhole frames and covers to be set to proposed pavement grades.
 - Laterals are to be 4" and extended to property line and to be located in the field.
 - Prior to construction of sewer, Contractor is to expose existing sewer and contact Engineer for verification of existing elevations.
 - The quantity estimate shown hereon is for information only and the City assumes no responsibility for its accuracy.

QUANTITY ESTIMATE

Manhole Standard No. 500	4	Ez.
Drop Manhole Standard No. 502		Ez.
Cleanout Standard No. 560	3	Ez.
8" Vitrified Clay Pipe	1,470	L.F.
4" Vitrified Clay Pipe	2,424	L.F.
4" x 8" Wyes	72	Ez.

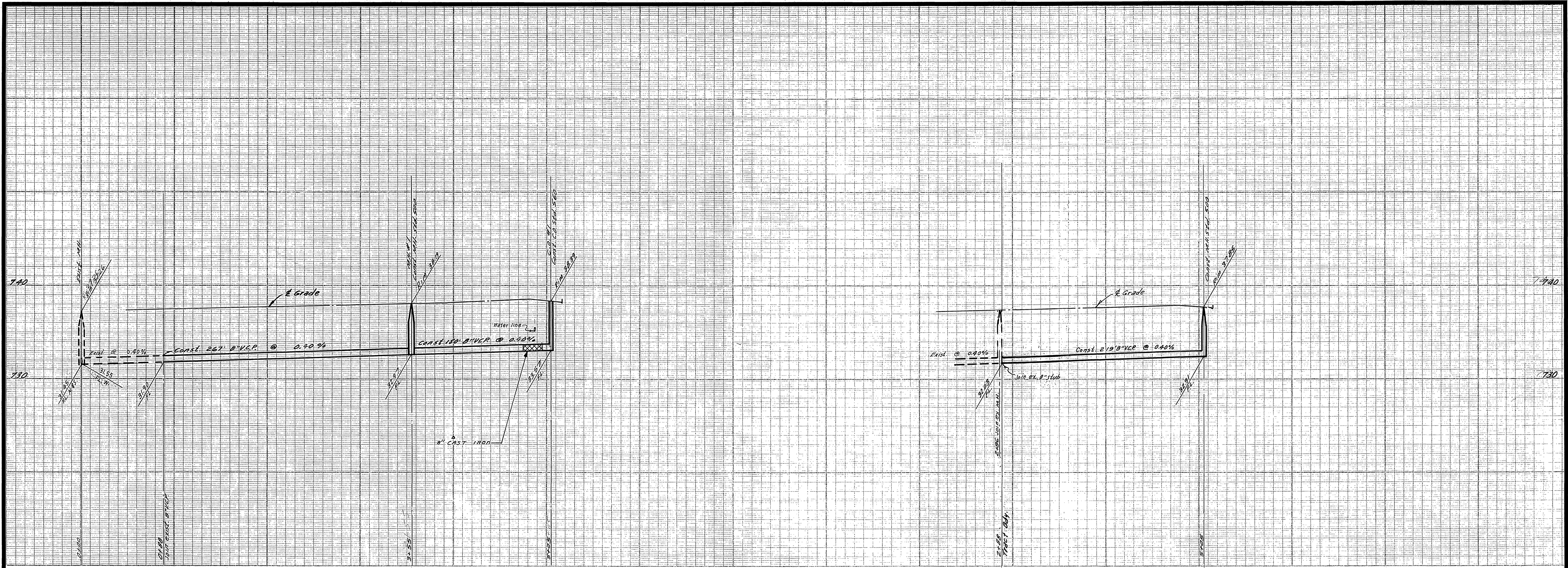
SPECIAL NOTE

AT ALL SEWER MAIN OR LATERAL CROSSINGS OF WATER MAINS SHOWN \odot , SEWER SHALL BE CONSTRUCTED WITH TYPE "B" ENCASEMENT PER PUBLIC UTILITIES DEPT. STD. DWG. NO. CWD-023 FOR 4 1/2 FEET ON EACH SIDE OF THE WATER MAIN OR WITH CAST IRON SEWER PIPE 4 1/2 FEET ON EACH SIDE OF WATER MAIN.

AT ALL SEWER MAIN OR LATERAL CROSSING OF WATER MAINS SHOWN \star , SEWER SHALL BE CONSTRUCTED PER TYPE "C" ENCASEMENT PER PUBLIC UTILITIES DEPT. STD. DWG. NO. CWD-023 FOR 4 1/2 FEET ON EACH SIDE OF THE WATER MAIN OR WITH CAST IRON SEWER PIPE 4 1/2 FEET ON EACH SIDE OF WATER MAIN.

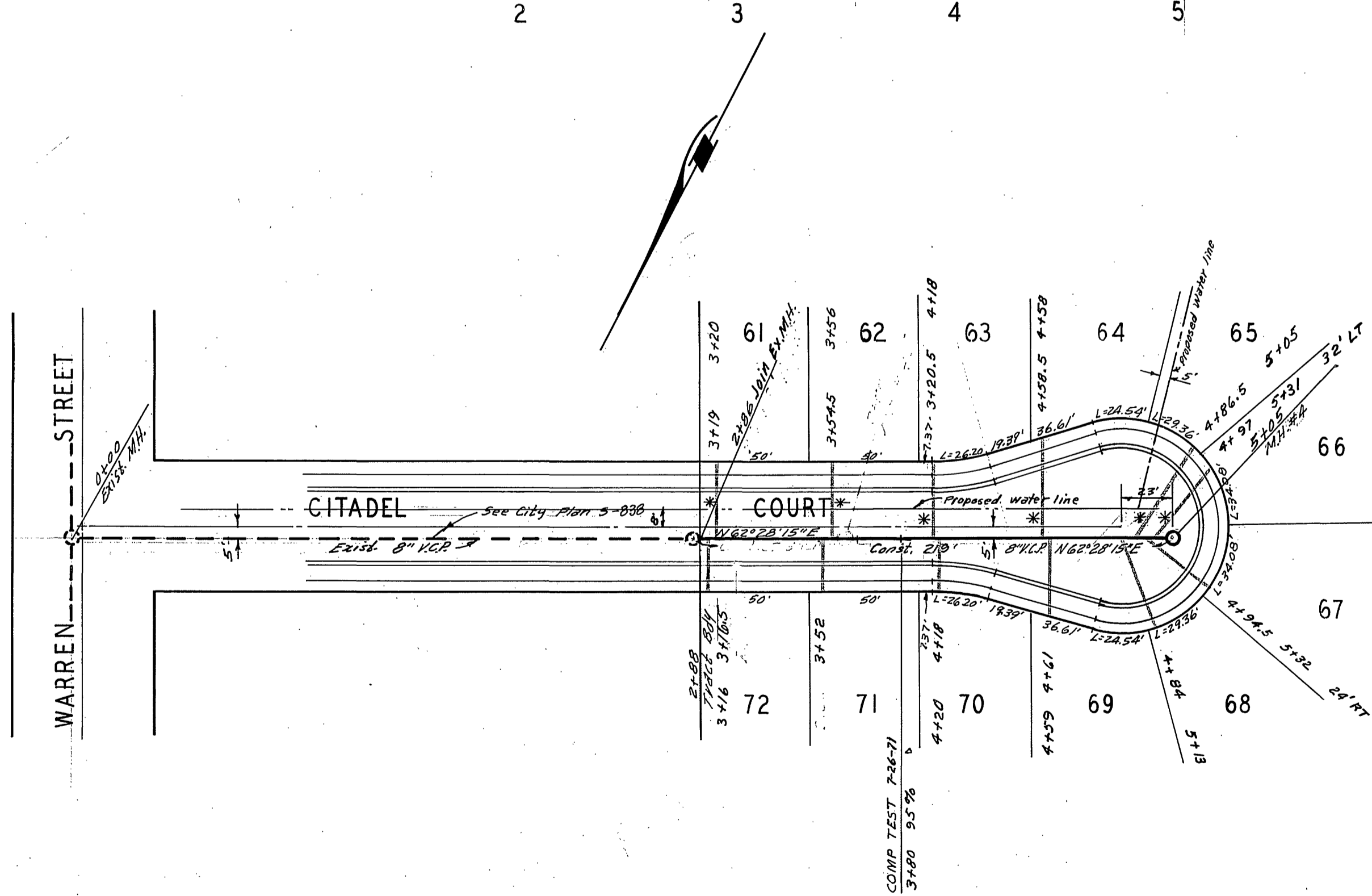
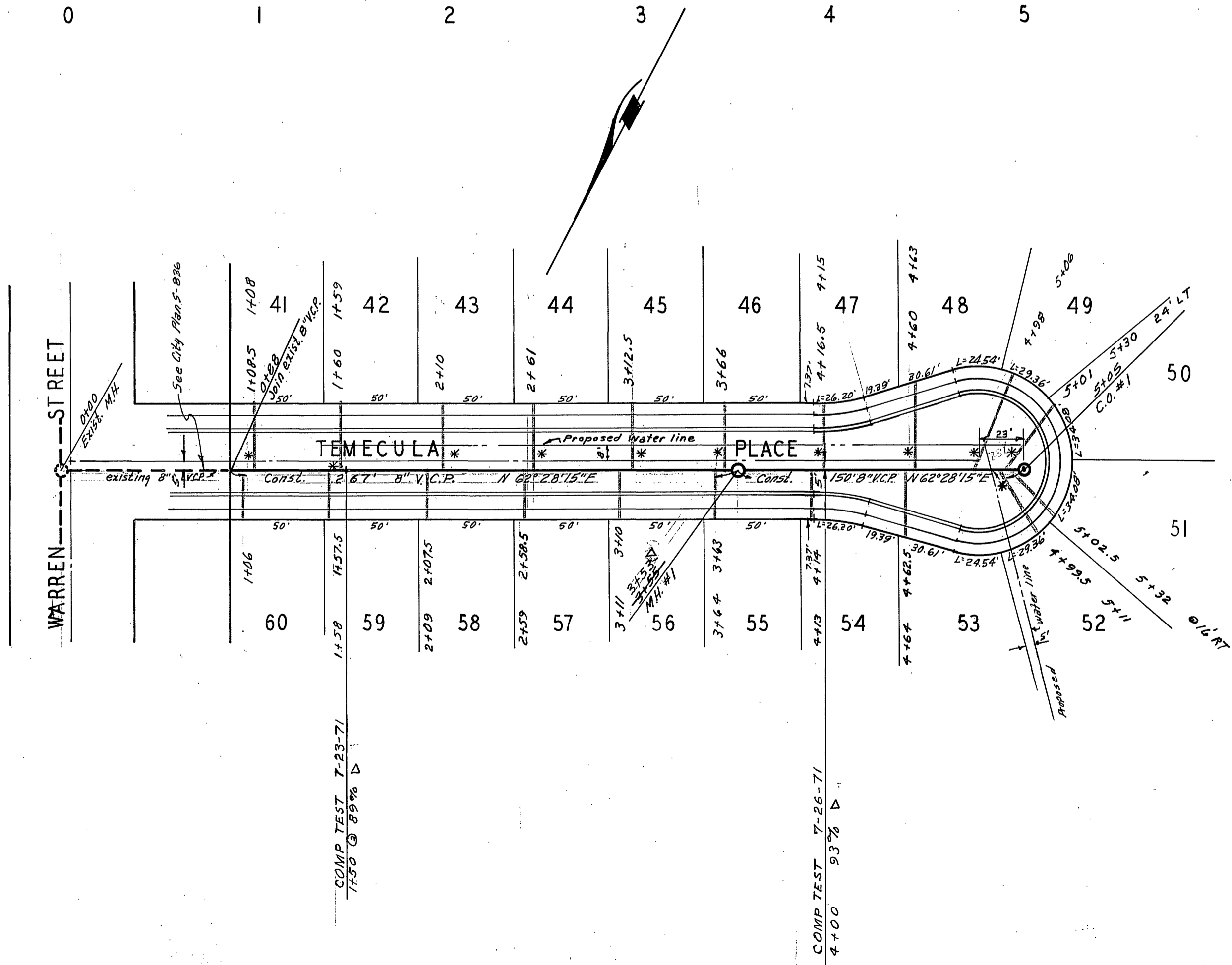
AS BUILT 8-3-71 *gln*

<p>ALBERT A. WEBB ASSOCIATES CIVIL ENGINEERS RIVERSIDE, CALIFORNIA</p> <p>APPROVED BY <i>S. H. Webb</i> DATE 12/24/70 R.E. No. 9876</p>	<p>Approved By <i>Howard L. Orneson</i> General Superintendent Chief Engineer - Water Dept. Date 6-2-71</p> <p>CITY OF RIVERSIDE, CALIFORNIA DEPARTMENT OF PUBLIC WORKS</p> <p>APPROVED BY _____ BY DATE _____ OFFICE ENGINEER <i>W. J. Allen</i> PARK DEPARTMENT _____ DIRECTOR OF PUBLIC WORKS TRAFFIC DIVISION _____ ASSISTANT CITY ENG. <i>W. J. Allen</i> DATE 6-1-71</p>	<p>SEWER PLAN AND PROFILE</p> <p>INDEX SHEET</p> <p>TRACT NO. 4151</p> <p>SCALE: AS SHOWN</p>	<p>PROJECT NO.</p> <p style="font-size: 2em; font-weight: bold;">S-839</p> <p>SHEET 1 OF 3</p> <p>FILE NO. 70-242-B</p>
<p>W.O. 70-242 FOR WOODHAVEN DEK</p>	<p>MARK REVISIONS APPR. DATE</p> <p>DESIGNED BY _____ DRAWN BY <i>Bel</i> CHECKED BY <i>ML</i></p>		



BENCH MARK
 1. Elev. 757.050, 5/4 on SW curb return Sequoia St. & 2nd St. App. City P.D. 550/153
 2. Elev. 752.297, Chisel x on the conc. M.W. man. Ely and south side Chalon Ave. 52339/60

NOTES
 1. 10' CAST IRON JOINT AT ALL * LOCATIONS.



AS BUILT 8-3-71 gdw

ALBERT A. WEBB ASSOCIATES
 CIVIL ENGINEERS
 RIVERSIDE, CALIFORNIA
 APPROVED BY *P. H. Wall* DATE 12/21/70
 R.E. No. 9876

MARK	REVISIONS	APPR.	DATE

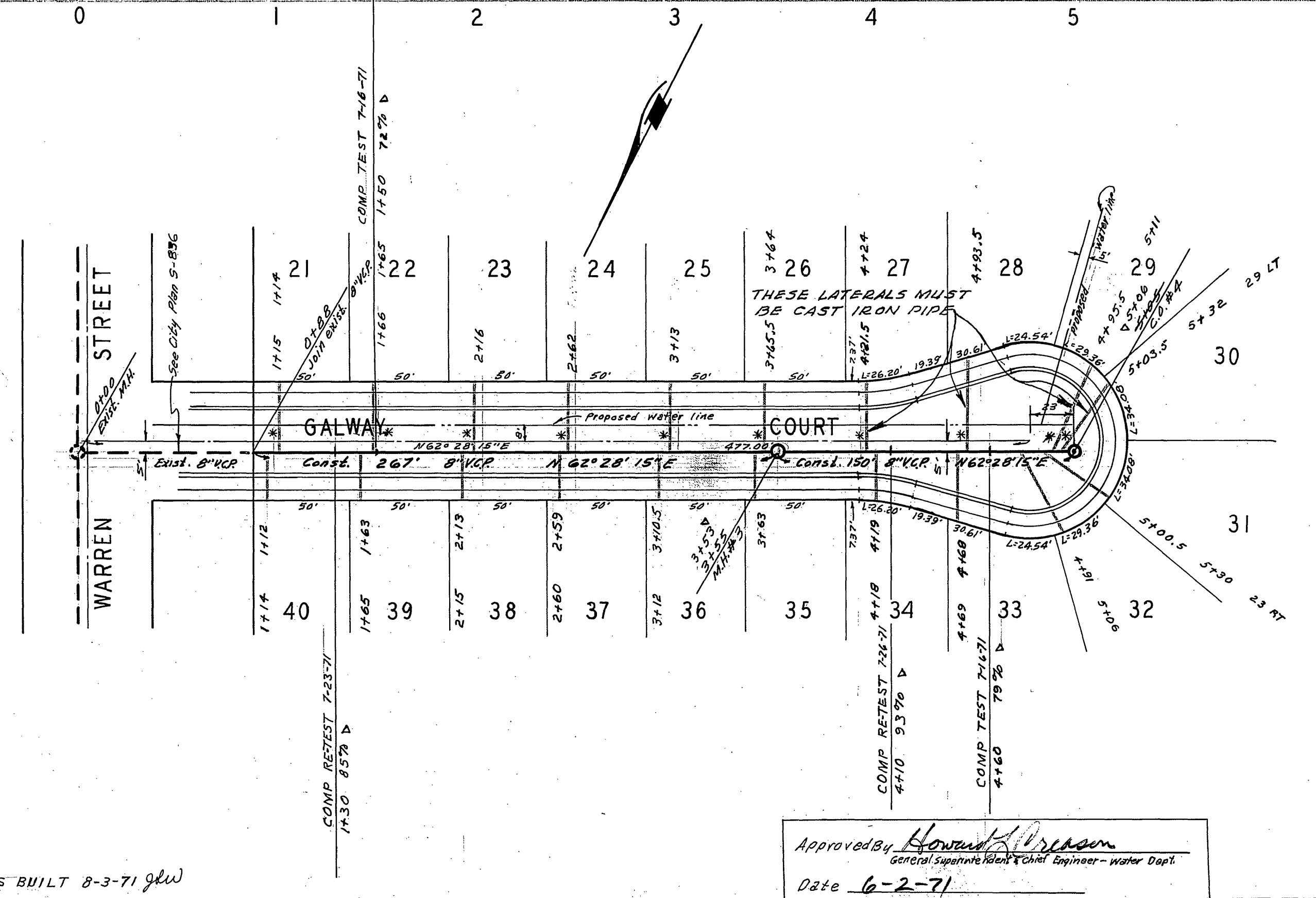
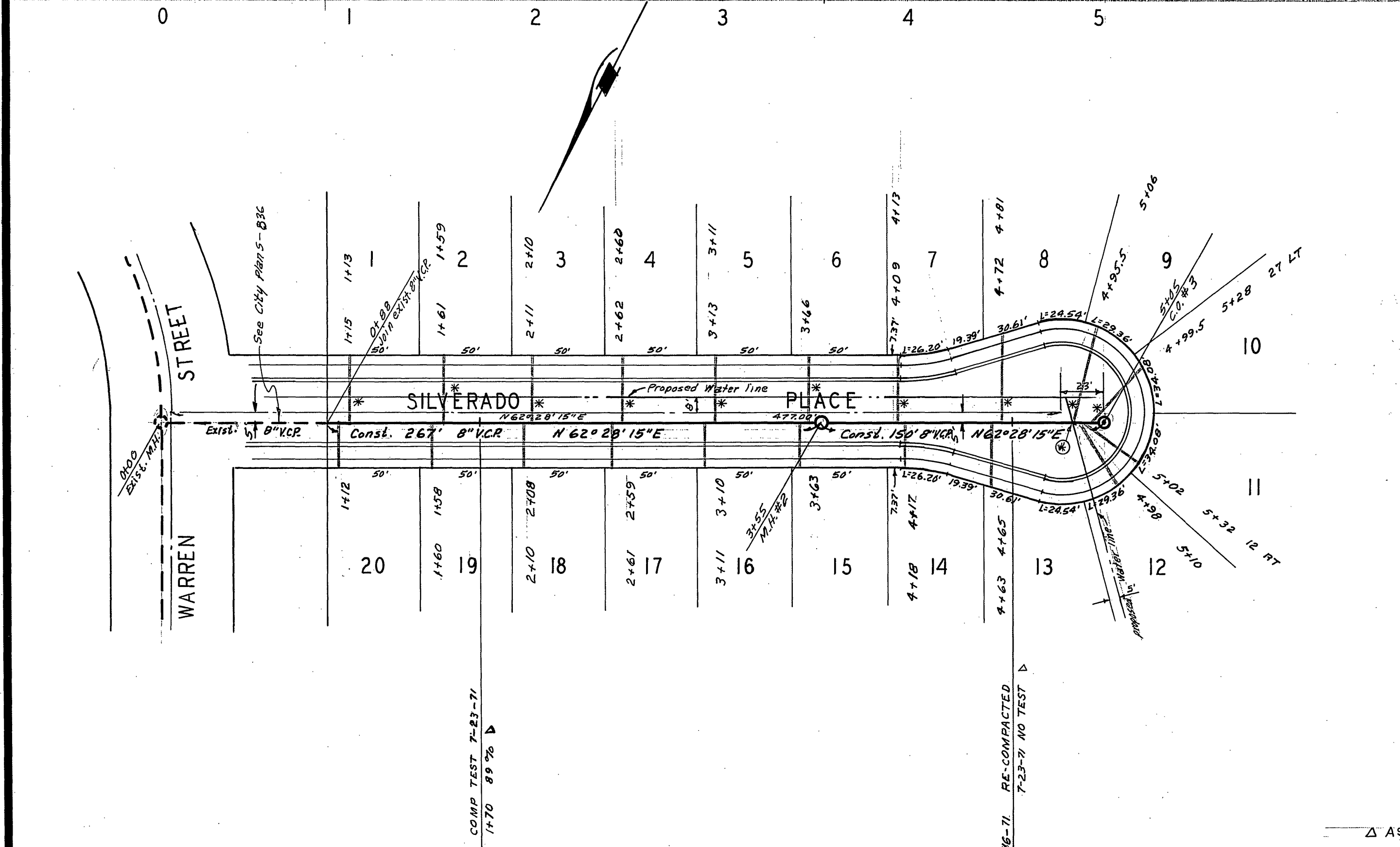
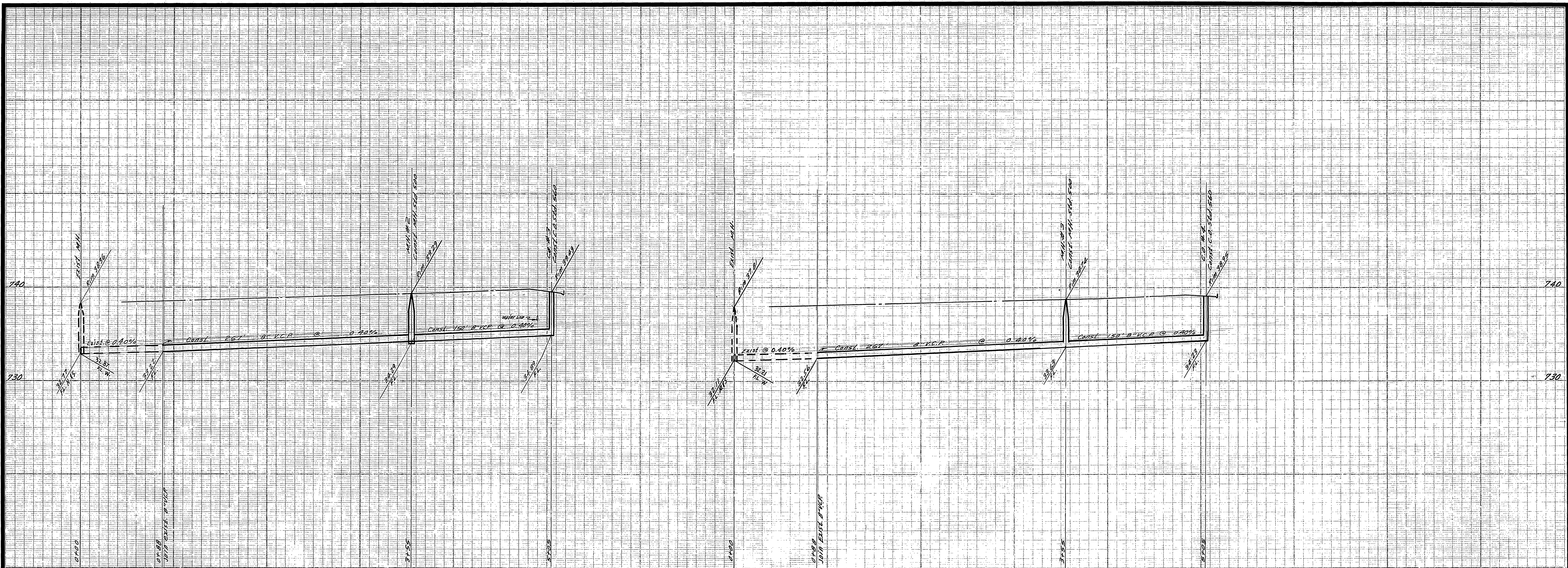
Approved by *Howard K. Cruse*
 General Superintendent & Chief Engineer - Water Dept.
 Date 6-2-71

CITY OF RIVERSIDE, CALIFORNIA
PUBLIC WORKS DEPARTMENT
 APPROVED BY *Charles G. Hill* DATE 6/11/71
 PARK DEPARTMENT
 TRAFFIC DIVISION
 CHIEF P.W.S. ENGR. *W. G. Gledhill* DATE 6-11-71

SEWER PLAN AND PROFILE
CITADEL COURT
TEMECULA PLACE
 TRACT NO. 4151

ACCOUNT No.
 DRAWING NUMBER
S-839
 SHEET 2 OF 3
 70-242-B

SCALE: 1"=50' Horiz. 1"=5' Vert.



BENCH MARK
 1. Elev 757.880, S.L. on SW curb return Sequoia St & Calif.
 2. Elev 752.297, Chisel X on the conc. H.W. just Ely and South side Challen Ave. Sta. 39+60.2

NOTES
 1. 8" MAIN LINE CAST IRON AT STA 2+05 TO 2+95 (SILVERADO PLACE)
 2. THE COMPLETE LATERAL AT GALWAY CT LOTS 27, 28, 29 IS CAST IRON.
 3. 10" CAST IRON JOINTS AT ALL "X" LOCATIONS.

AS BUILT 8-3-71 glw

ALBERT A. WEBB ASSOCIATES
 CIVIL ENGINEERS
 RIVERSIDE, CALIFORNIA
 APPROVED BY: *[Signature]* DATE: 12/21/59
 R.E. No. 9876

W.O. 70-242 FOR: Wood Haven Oak
 DESIGNED BY: DEC
 DRAWN BY: BEL
 CHECKED BY: DEC

Approved By: *[Signature]*
 General Supervisor, Public Works Department
 Date: 6-2-71

APPROVED BY	BY	DATE
PRINCIPAL ENGINEER	CPW	6/11
PARK DEPARTMENT		
TRAFFIC DIVISION		
CHIEF PUB. WKS. ENGR.	6/11	6/11

CITY OF RIVERSIDE, CALIFORNIA
PUBLIC WORKS DEPARTMENT
SEWER PLAN AND PROFILE
GALWAY COURT
SILVERADO PLACE
 TRACT NO. 4151
 SCALE: 1" = 50' Horiz. 1" = 5' Vert.

ACCOUNT No.
 DRAWING NUMBER
S-839
 SHEET 3 OF 3
 70-242-B