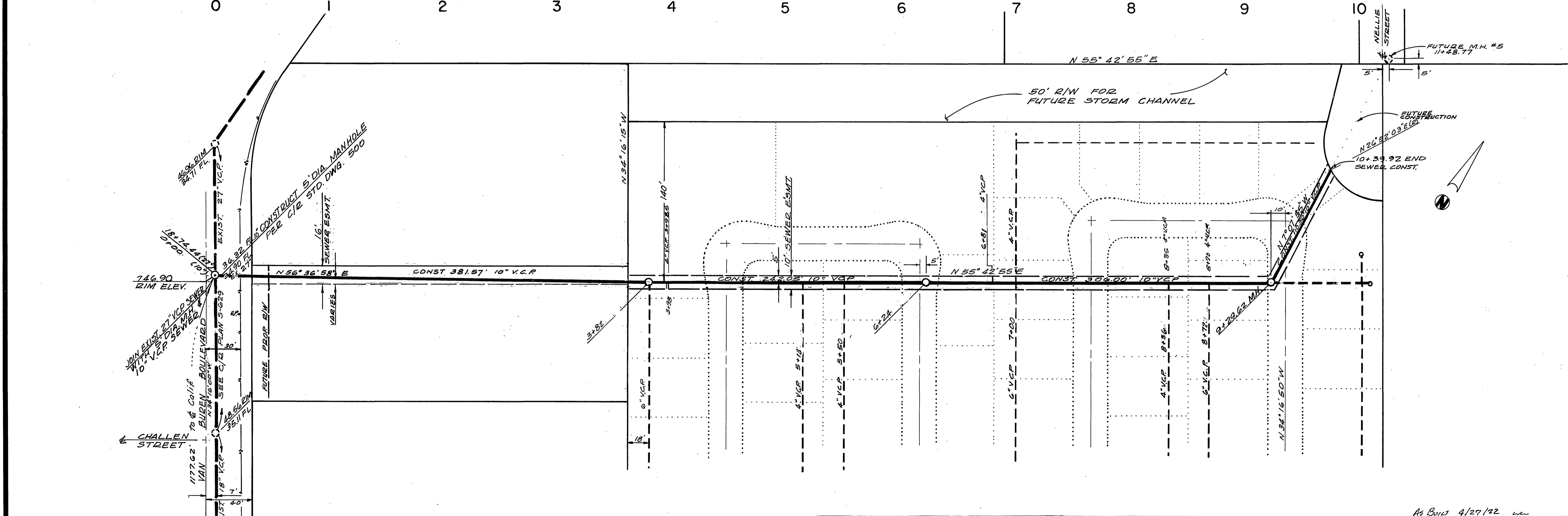


PROFILE SCALE
 HORIZONTAL 1"=50'
 VERTICAL 1"=25'



BENCH MARK
 PK NAIL & LEAD IN S.E. CURB
 RETURN OF INTERSECTION OF
 JACKSON STREET AND CALIFORNIA
 AVENUE.
 ELEV. 749.70

- GENERAL NOTES**
- Construction shall be in accordance with the City of Riverside Department of Public Works Drawings and the Standard Specifications for Public Works Construction, 1970 Edition.
 - It shall be the responsibility of the contractor to clear the right of way in accordance with the provisions of the law as it affects such utility including irrigation ditches and appurtenances and at no cost to the City.
 - Pipe shall be laid per Case 1, Standard Drawing No. 432, unless otherwise specified on plan.
 - Locations of wyes and laterals to be as shown on this plan.
 - All shifs and repairs to be constructed in accordance with Standard Drawing No. 507. Shifs shall be tagged and capped.
 - Manhole frames and covers to be as proposed pavement grade.
 - When the construction of storm channels is in accordance with the Standard Drawing No. 432, the contractor shall provide the necessary easement.
 - The quantity estimate shown hereon is for information only and the City assumes no responsibility for its accuracy.

QUANTITY ESTIMATE

10" Vitrifed Clay Pipe	1,040 LF
10" x 6" Wye	3 Ea.
10" x 4" Wye	6 Ea.
Manhole Standard No. 500	4 Ea.
Pavement Replacement	70 SF

ALBERT A. WEBB ASSOCIATES CIVIL ENGINEERS RIVERSIDE, CALIFORNIA APPROVED BY <i>L.O. Wainwright</i> DATE 5-26-71 R.E. No. 16056 <small>RIVERSIDE COUNTY CLUB 224 W.O. 70-204 FOR MOBILE HOME ESTATES B. 122</small>	MARK REVISIONS APPR. DATE DESIGNED BY <i>AW</i> DRAWN BY <i>W28</i> CHECKED BY <i>AW</i>	CITY OF RIVERSIDE, CALIFORNIA PUBLIC WORKS DEPARTMENT APPROVED BY _____ BY DATE _____ PRINCIPAL ENGINEER <i>EJP</i> 6/29 PARK DEPARTMENT TRAFFIC DIVISION CHIEF PUB. WKS. ENGR.	APPROVED BY _____ DIRECTOR OF PUBLIC WORKS DATE 3/27/71	SEWER PLAN & PROFILE EASEMENT VAN BUREN BLVD. - NELLIE ST. C - 10 - 701 SCALE: HORIZONTAL 1"=50' VERTICAL 1"=25'	ACCOUNT No. 70-204 DRAWING NUMBER S-841 SHEET 1 OF 1 W.O. 70-204-3
		APPROVED BY _____ DATE _____ PRINCIPAL ENGINEER TRAFFIC DIVISION CHIEF PUB. WKS. ENGR.		DATE 3/27/71	SHEET 1 OF 1 W.O. 70-204-3