

GENERAL NOTES

- Construction shall be in accordance with the City of Riverside, Department of Public Works, Standard Specifications No. 461 and Standard Drawings.
- It shall be the responsibility of the contractor to clear the right of way in accordance with the provisions of the law as it affects each utility including irrigation lines and appurtenances and at no cost to the City.
- Joints shall be in accordance to ASTM Specifications C-425-64, Type I or III or to ASTM Specifications C-594-66 T (Band Seal) with certain exceptions or modifications as filed with the City Engineer. (Band Seal not to be used in covered sewers).
- Pipe shall be bedded per Case 1, Standard Drawing No. 452, unless otherwise specified on plan.
- Location of wyes and laterals to be determined at the direction of the owner.
- All stubs and laterals to be constructed in accordance with Standard Drawing No. 562. Stubs shall be plugged and capped.
- Manhole frames and covers to be set to proposed pavement grades, All wyes to be laid flat.
- Laterals are to be 4" and extended to property line and to be located in the field.
- Prior to construction of sewer, Contractor is to expose existing sewer and contact Engineer for verification of existing elevations.
- The quantity estimate shown hereon is for information only and the City assumes no responsibility for its accuracy.

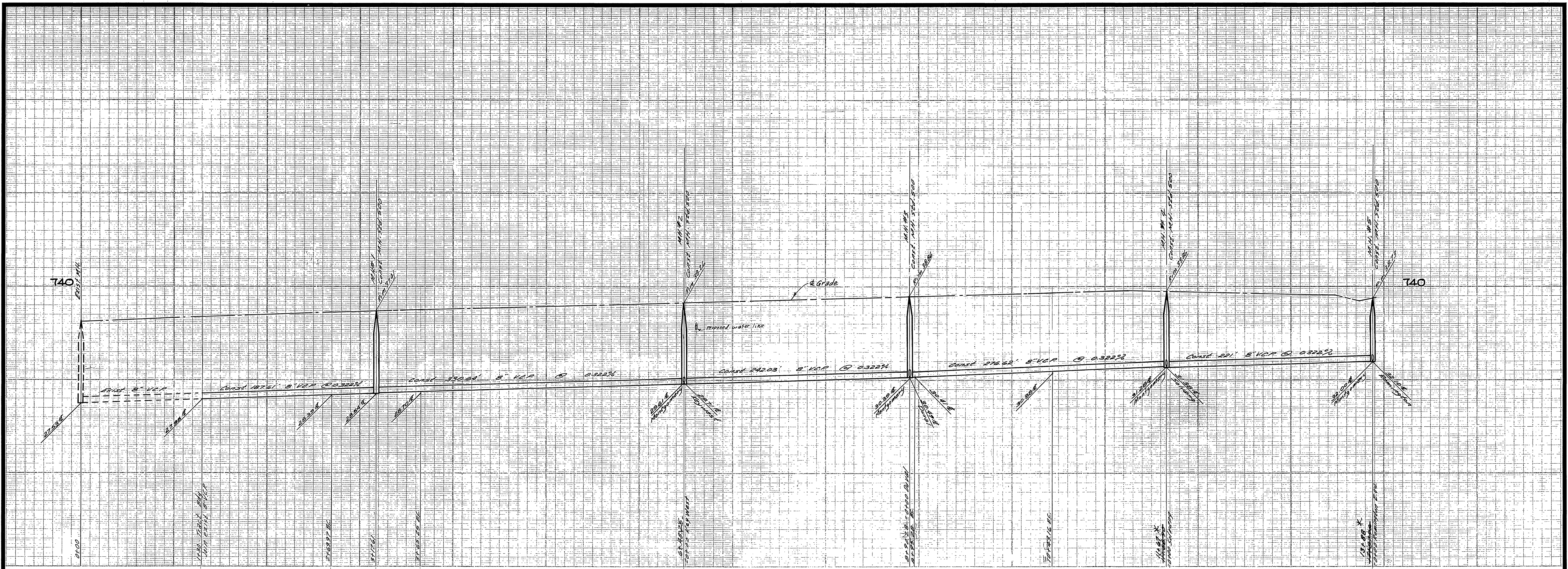
QUANTITY ESTIMATE

Manhole Standard No. 500	5	Ea
Drop Manhole Standard No. 502		Ea
Cleanout Standard No. 560	4	Ea
8" Vitrified Clay Pipe	1,759	L.F.
4" Vitrified Clay Pipe	1,714	L.F.
4" X 8" Wyes	51	Ea

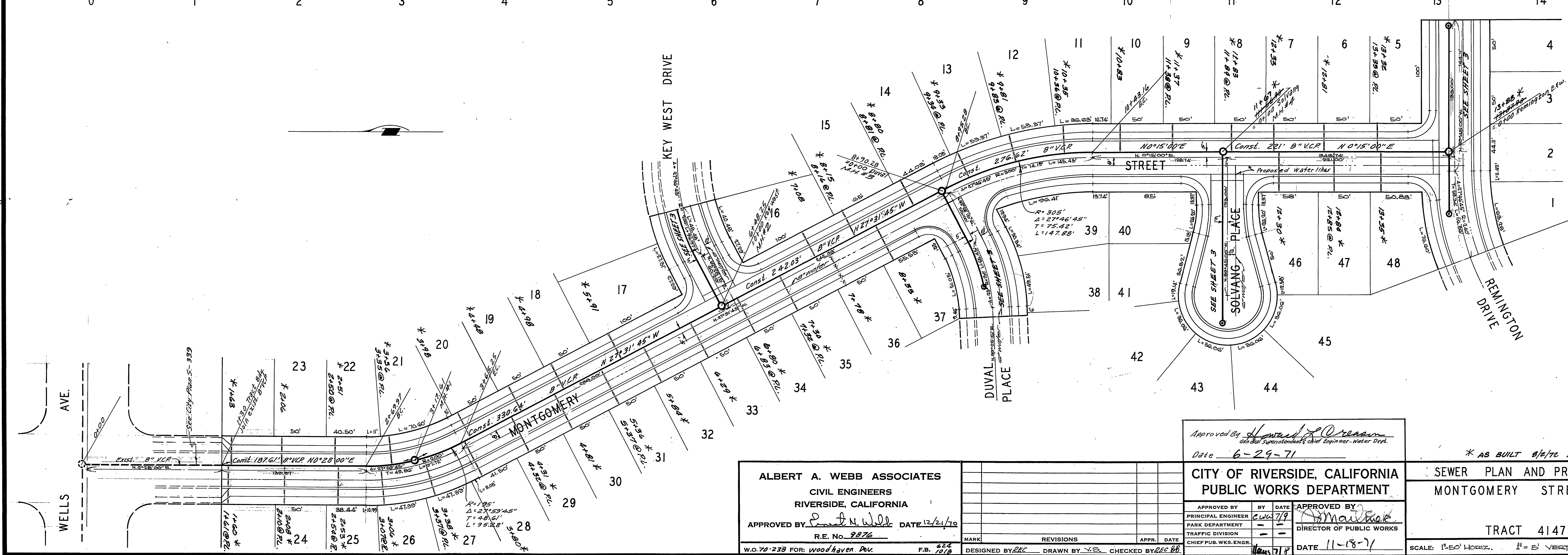
Approved By *Harold P. Johnson*
 General Superintendent of Civil Engineer - Water Dept.
 Date 6-29-71

* AS BUILT 8/1/72 PARL

ALBERT A. WEBB ASSOCIATES CIVIL ENGINEERS RIVERSIDE, CALIFORNIA APPROVED BY <i>Albert A. Webb</i> DATE 12/29/70 R.E. No. 9876	MARK REVISIONS APPR. DATE	Approved By <i>Harold P. Johnson</i> General Superintendent of Civil Engineer - Water Dept. Date 6-29-71	CITY OF RIVERSIDE, CALIFORNIA DEPARTMENT OF PUBLIC WORKS	SEWER PLAN AND PROFILE INDEX SHEET	PROJECT NO. S-843
		PARK DEPARTMENT TRAFFIC DIVISION ASSISTANT CITY ENG.	APPROVED BY DIRECTOR OF PUBLIC WORKS	TRACT NO. 4147	SHEET 1 OF 3
W.O. 70-238 FOR WOODHAVEN DEK F.B. 7018	DESIGNED BY DRAWN BY <i>Bel</i> CHECKED BY <i>BA</i>	DATE <i>11/1/71</i>	SCALE: AS SHOWN	FILE NO. 70-238-B	



- BENCH MARKS**
- ELEV. 757.850, 3/4" ON 3/4" CURB RETURN SEQUOIA ST. & CALIF. AVE., CITY F.B. 550/53.
 - ELEV. 752.297, CHISEL "X" ON THE CONC. L.W. MOST ELY. END SOUTH SIDE CHALLENGE AVE. STA. 59+601.



ALBERT A. WEBB ASSOCIATES
 CIVIL ENGINEERS
 RIVERSIDE, CALIFORNIA
 APPROVED BY: *[Signature]* DATE: 12/21/10
 R.E. No. 2876

Approved By: *[Signature]*
 City Engineer - Water Dept.
 Date: 6-29-11

CITY OF RIVERSIDE, CALIFORNIA
 PUBLIC WORKS DEPARTMENT

APPROVED BY: *[Signature]* DATE: 11-18-11
 PRINCIPAL ENGINEER
 PARK DEPARTMENT
 TRAFFIC DIVISION
 CHIEF PUB. WKS. ENGR.

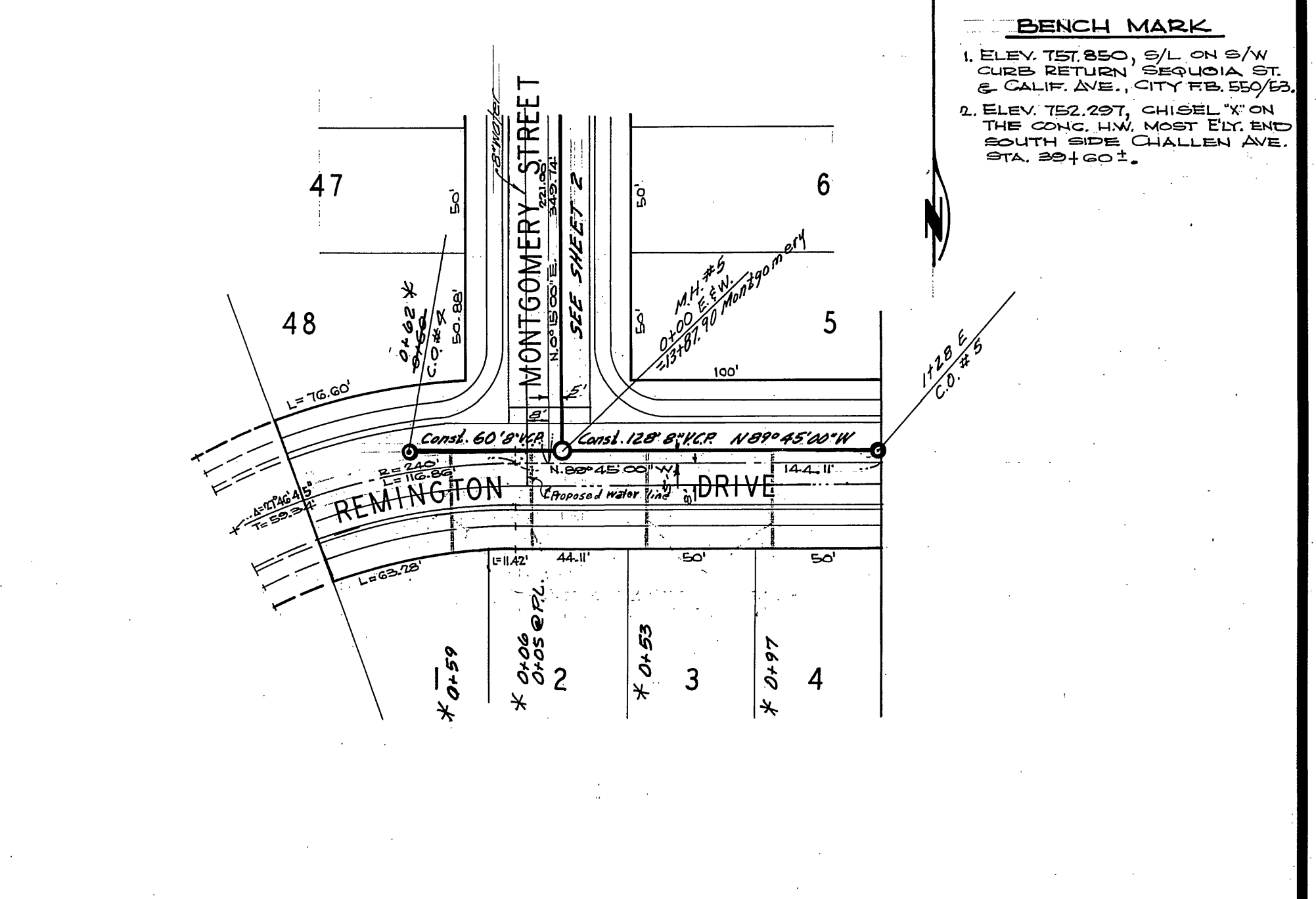
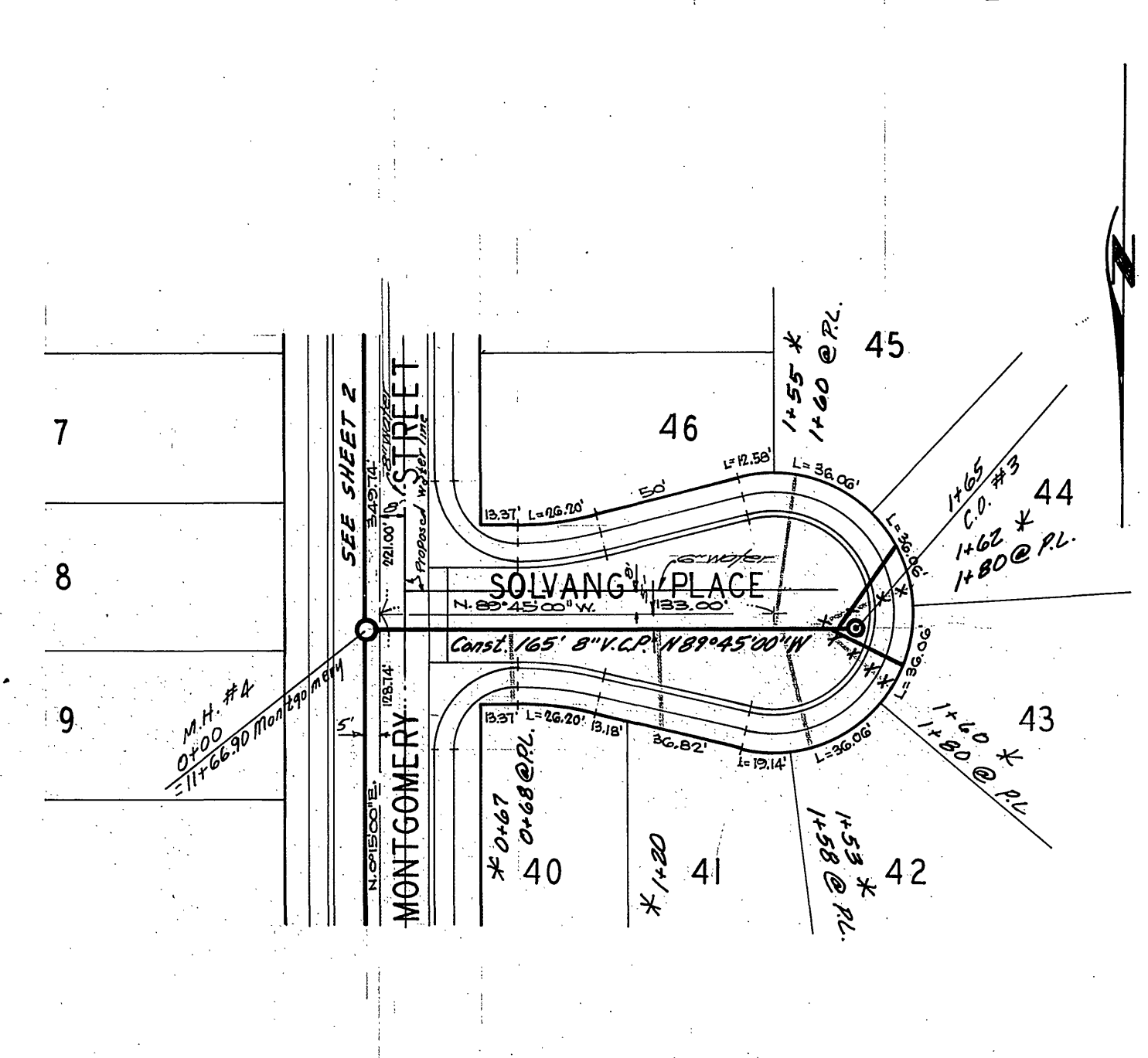
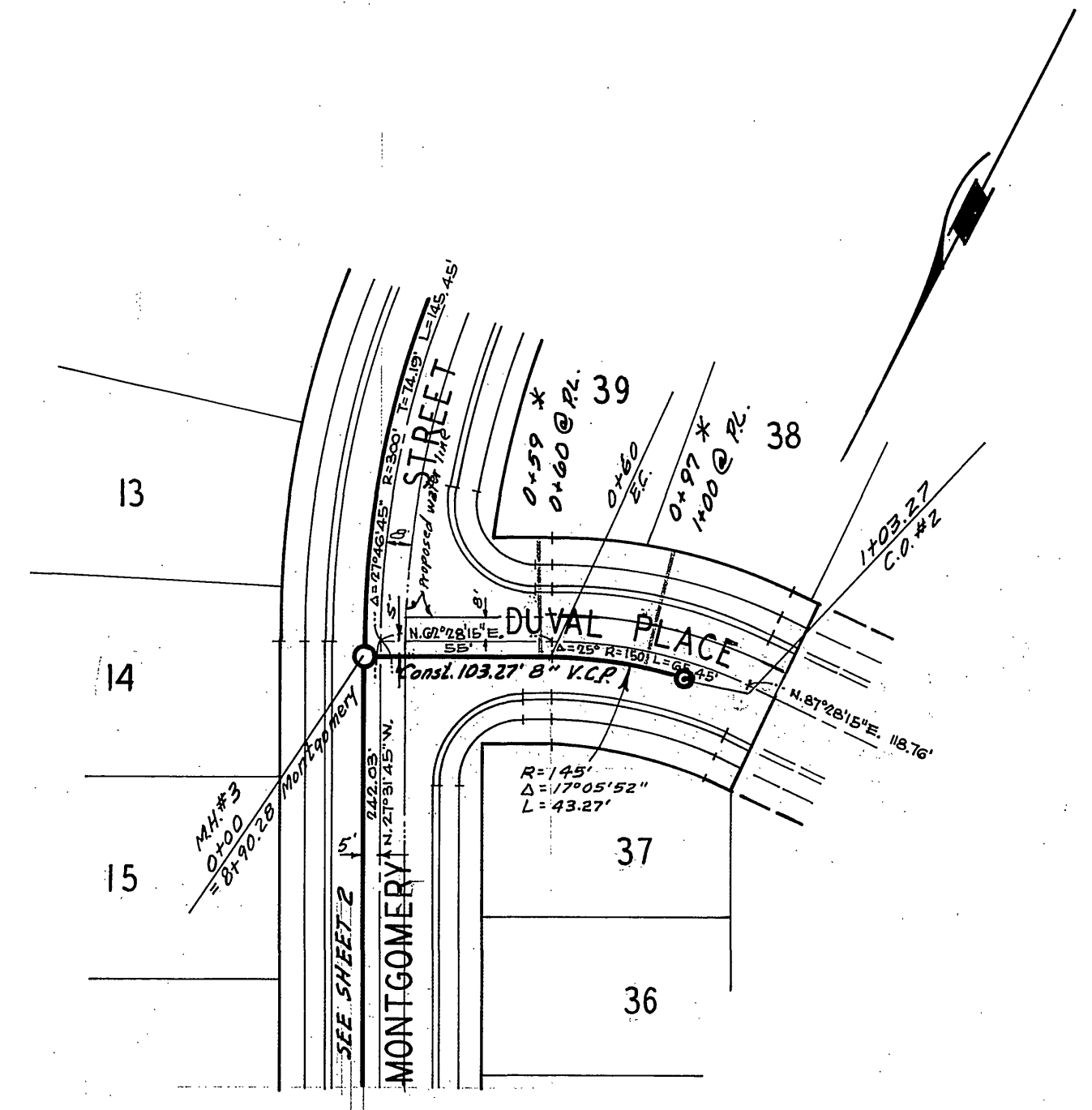
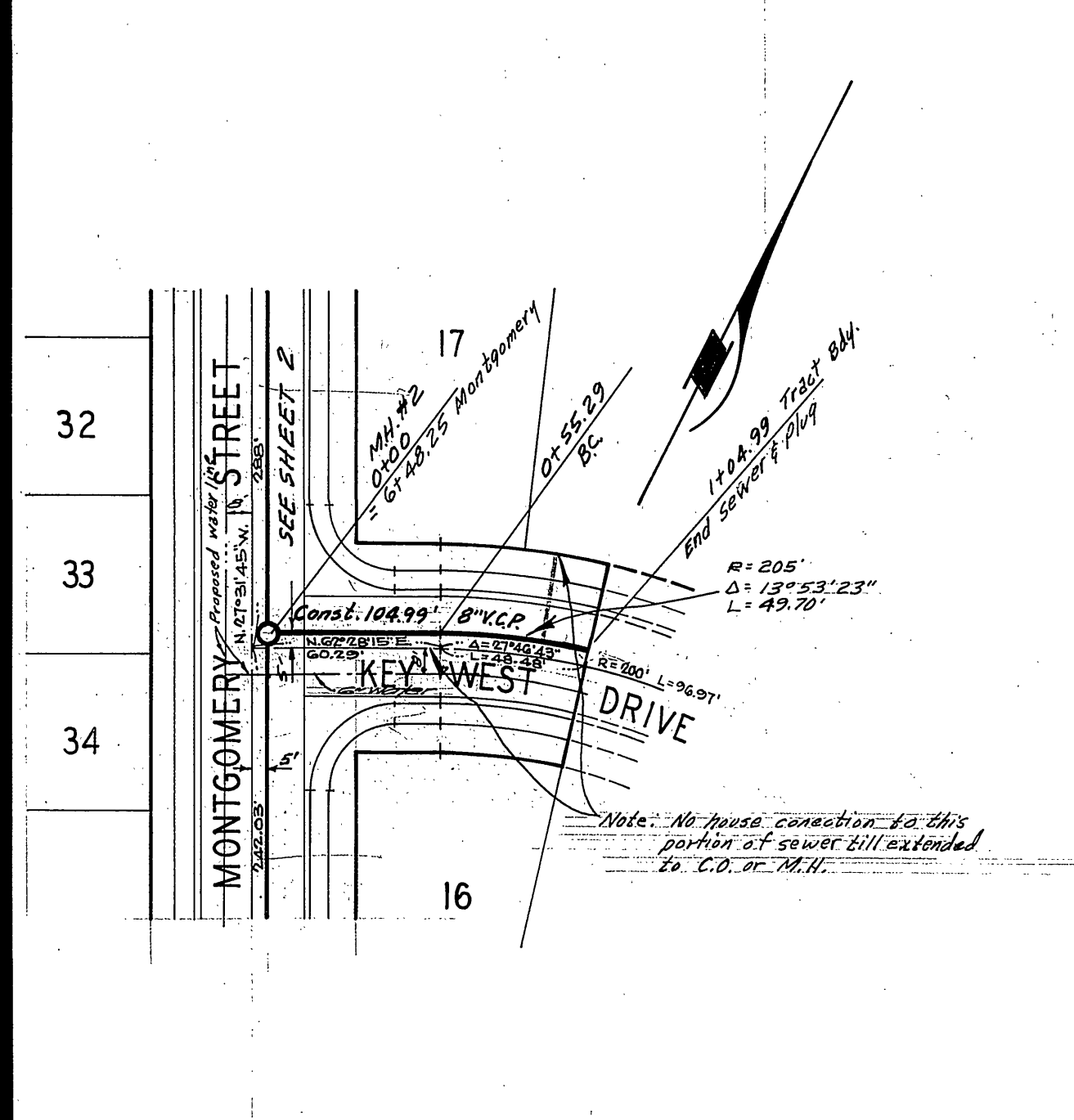
* AS BUILT 8/2/12 KRL

SEWER PLAN AND PROFILE
 MONTGOMERY STREET

TRACT 4147

ACCOUNT No. _____
 DRAWING NUMBER **S-843**
 SHEET 2 OF 3
 SCALE: 1"=50' HORIZ. 1"=5' VERT.
 70-238-B

W.O. 72-238 FOR: woodhaven Dev. F.B. 622/1018 DESIGNED BY: *[Signature]* DRAWN BY: *[Signature]* CHECKED BY: *[Signature]*



BENCH MARK
 1. ELEV. 737.850, S/L ON S/W CURB RETURN SEQUOIA ST. & CALIF. AVE., CITY FB. 65/63.
 2. ELEV. 732.297, CHISEL "X" ON THE CONC. HW. MOST E.D. END SOUTH SIDE CHALLENGE AVE. STA. 29+60.2.

ALBERT A. WEBB ASSOCIATES
 CIVIL ENGINEERS
 RIVERSIDE, CALIFORNIA
 APPROVED BY: *Ronald H. Wade* DATE: 12/21/70
 R.E. No. 9876

MARK REVISIONS APPR. DATE
 DESIGNED BY: REC DRAWN BY: B.L. CHECKED BY: REC BB

Approved By: *Lawrence A. O'Connell*
 General Superintendent Civil Engineer - water Dept.
 Date: 6-29-71
 CITY OF RIVERSIDE, CALIFORNIA
 PUBLIC WORKS DEPARTMENT
 APPROVED BY: *[Signature]* DATE: 11-18-71
 PRINCIPAL ENGINEER: E. J. [Signature]
 PARK DEPARTMENT: [Signature]
 TRAFFIC DIVISION: [Signature]
 CHIEF PUB. WKS. ENGR. [Signature]

* AS BUILT 8/12/72 KHL
 ACCOUNT No. DRAWING NUMBER
 SEWER PLAN AND PROFILE
 KEY WEST DRIVE DUVAL PLACE
 SOLVANG PLACE REMINGTON DRIVE
 TRACT 4147
 SHEET 3 OF 3
 SCALE: 1" = 50' Horiz., 1" = 5' Vert.
 70-238-B