

SCALE 1" = 200'

GENERAL NOTES

- Construction shall be in accordance with the City of Riverside, Department of Public Works, Standard Specifications For Public Works Const., 1970 edition and Standard Drawings.
- It shall be the responsibility of the contractor to clear the right of way in accordance with the provisions of the law as it affects each utility including irrigation lines and appurtenances and at no cost to the City.
- Joints shall be in conformance to ASTM Specifications C-425-64 Type I or III or to ASTM Specifications C-594-64 T (Band Seal) with certain exceptions or modifications on file with the City Engineer. (Band Seal) not to be used in curved portion.
- Pipe shall be bedded per Case 1, Standard Drawing No. 452, unless otherwise specified on plan.
- Location of wyes and laterals to be determined at the direction of the sewer.
- All stubs and laterals to be constructed in accordance with Standard Drawing No. 562. Stubs shall be plugged and capped, all wyes to be laid flat.
- Manhole frames and covers to be set to proposed pavement grades.
- Laterals are to be 4" and extended to property line.
- Prior to construction of sewer, Contractor is to expose existing sewer and contact Engineer for verification of existing elevations.
- The quantity estimate shown hereon is for information only and the City assumes no responsibility for its accuracy.

QUANTITY ESTIMATE

Manhole Standard No. 500	7	EA.
Drop Manhole Standard No. 502		EA.
Cleanout Standard No. 560		EA.
8" Vitrified Clay Pipe	1,554	LF.
4" Vitrified Clay Pipe	1,522	LF.
4" X 8" Wyes	44	EA.

SPECIAL NOTE

AT ALL SEWER MAIN OR LATERAL CROSSING OF WATER MAINS SHOWN * , SEWER SHALL BE CONSTRUCTED PER TYPE "C" ENCASEMENT PER PUBLIC UTILITIES DEPT. STD. DWG. NO. CWD-023 FOR 4 1/2 FEET ON EACH SIDE OF THE WATER MAIN OR WITH CAST IRON SEWER PIPE CLASS 150 4 1/2 FEET ON EACH SIDE OF WATER MAIN.
 AT ALL SEWER MAIN OR LATERAL CROSSING OF WATER MAINS SHOWN @ SEWER SHALL BE CONSTRUCTED WITH TYPE "B" ENCASEMENT PER PUBLIC UTILITIES DEPT. STD. DWG. NO. CWD-023 FOR 4 1/2 FEET ON EACH SIDE OF THE WATER MAIN OR WITH CAST IRON SEWER PIPE 4 1/2 FEET ON EACH SIDE OF WATER MAIN.

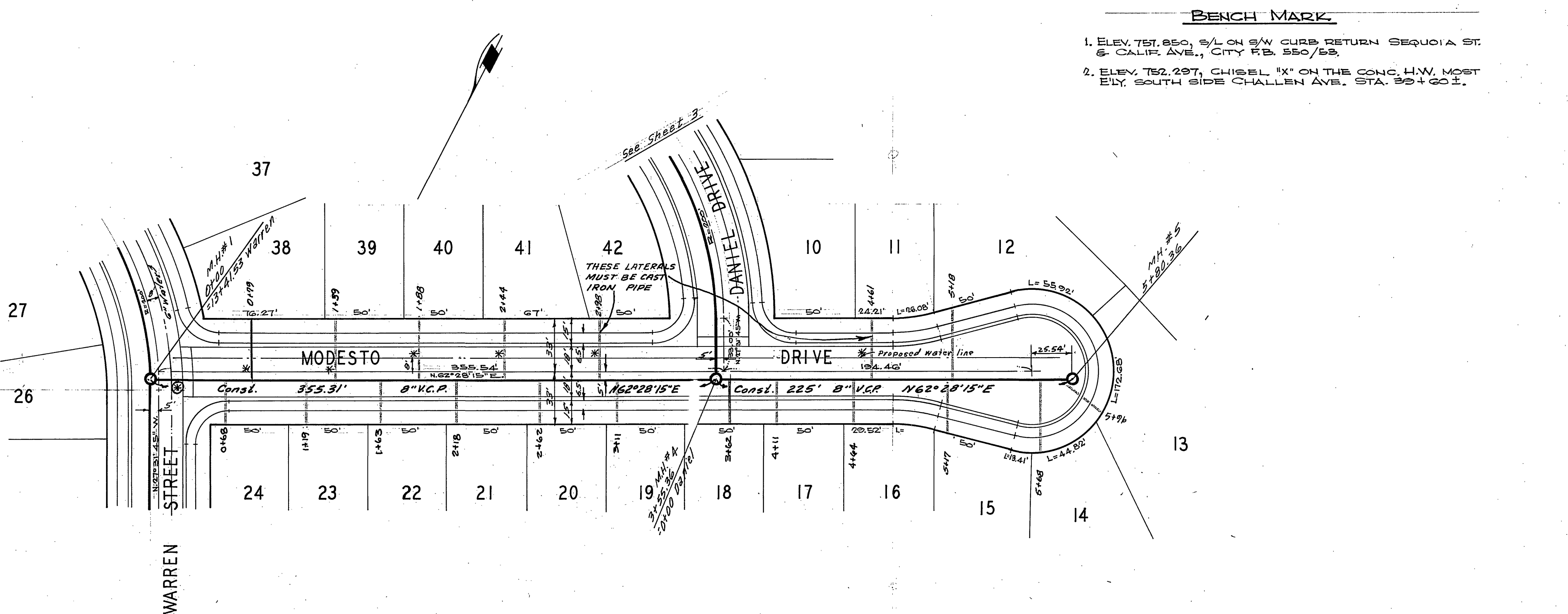
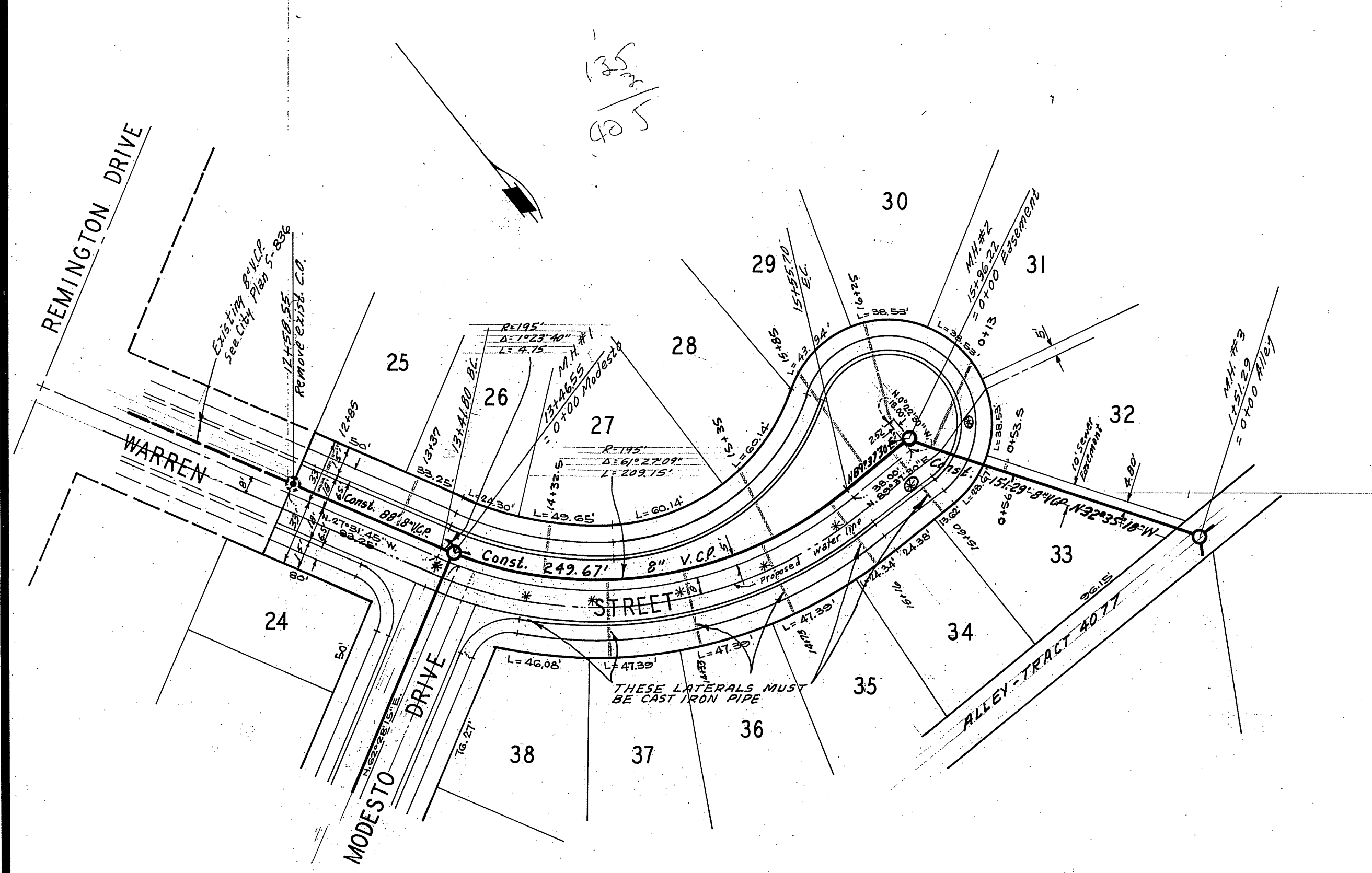
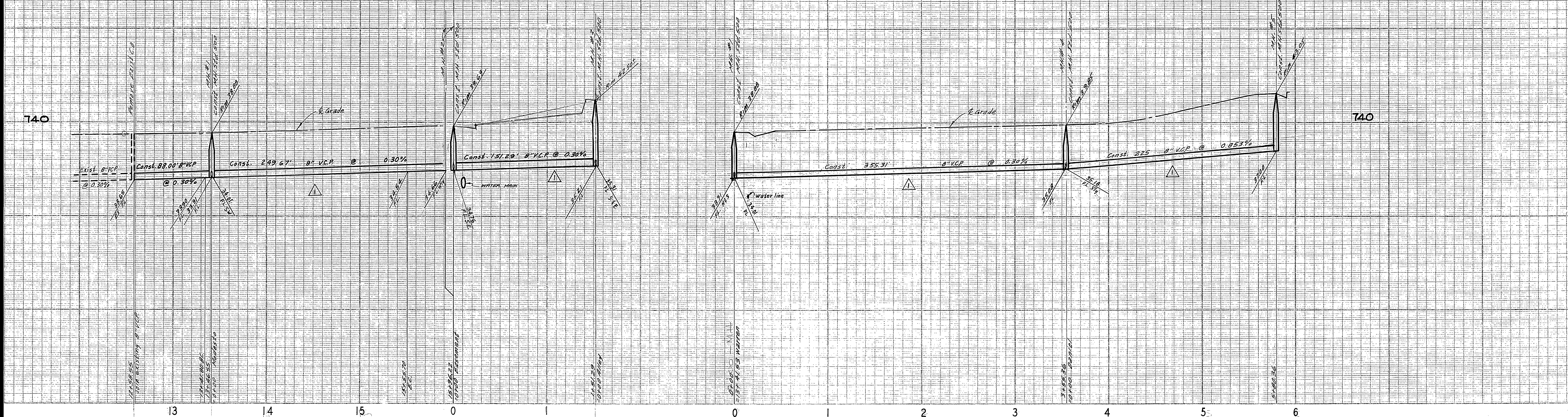
As BUILT NOTES

- ALL LATERALS 4" CAST IRON CLASS 150 AT * AND @ LOCATIONS.
- 8" VCP TYPE "C" ENCASEMENT AT * LOCATIONS.

Approved By Howard K. Croson
 General Superintendent Chief Engineer - Water Dept.
 Date 6-29-71

As BUILT 9/22/72 cc.

ALBERT A. WEBB ASSOCIATES CIVIL ENGINEERS RIVERSIDE, CALIFORNIA APPROVED BY <u>P. A. N. Webb</u> DATE <u>12/29/70</u> R.E. No. <u>9276</u>	MARK REVISIONS APPR. DATE	CITY OF RIVERSIDE, CALIFORNIA DEPARTMENT OF PUBLIC WORKS		SEWER PLAN AND PROFILE	PROJECT NO.
		APPROVED BY OFFICE ENGINEER PARK DEPARTMENT TRAFFIC DIVISION ASSISTANT CITY ENG.	BY DATE	APPROVED BY DIRECTOR OF PUBLIC WORKS	INDEX SHEET
W.O. 70-24 FOR WOODHAVEN DEK 924 F.B. 7073	DESIGNED BY	DRAWN BY <u>Bel</u>	CHECKED BY <u>80</u>	TRACT NO. 4150	SHEET <u>1</u> OF <u>3</u>
				SCALE: AS SHOWN	FILE NO. 70-241-B



- BENCH MARK**
- ELEV. 751.850, 5/4 ON 8" W CURB RETURN SEQUOIA ST. & CALIF. AVE., CITY P.B. 550/53.
 - ELEV. 752.297, CHISEL "X" ON THE CONC. H.W. MOST ELY. SOUTH SIDE CHALLENGE AVE. STA. 39+60.1.

ALBERT A. WEBB ASSOCIATES
 CIVIL ENGINEERS
 RIVERSIDE, CALIFORNIA

APPROVED BY: *Paul N. Webb* DATE: 12/23/70
 R.E. No. 9872

DESIGNED BY: *REC* DRAWN BY: *Y.S.* CHECKED BY: *REC*

Approved By: *Howard A. Orason*
 General Superintendent & Chief Engineer - Water Dept.
 Date: 6-29-71

CITY OF RIVERSIDE, CALIFORNIA
 PUBLIC WORKS DEPARTMENT

APPROVED BY: *W.D. 7/12* BY: *W.D. 7/12* DATE: *7/12*
 PRINCIPAL ENGINEER
 PARK DEPARTMENT
 TRAFFIC DIVISION
 CHIEF PUB. WKS. ENGR.

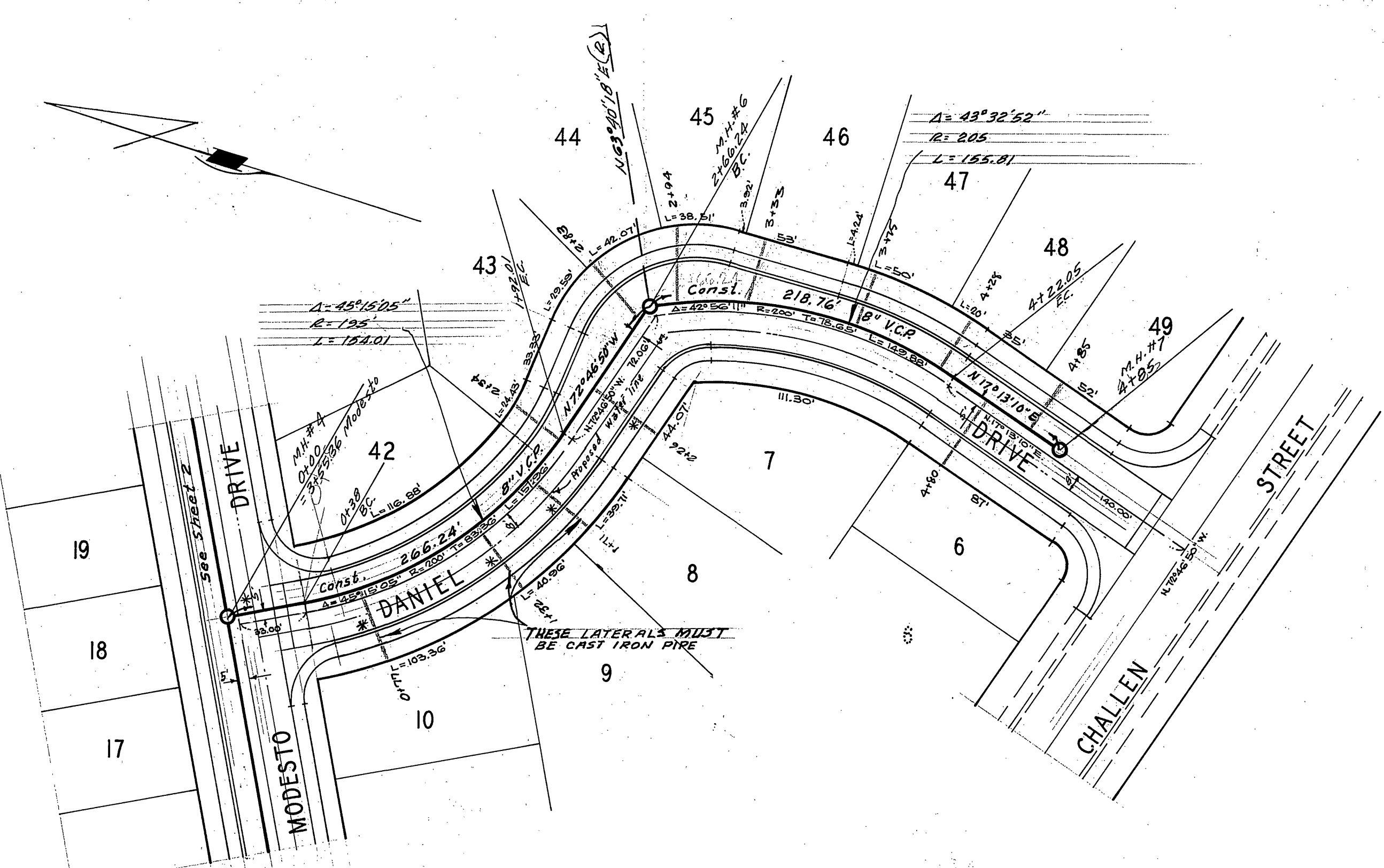
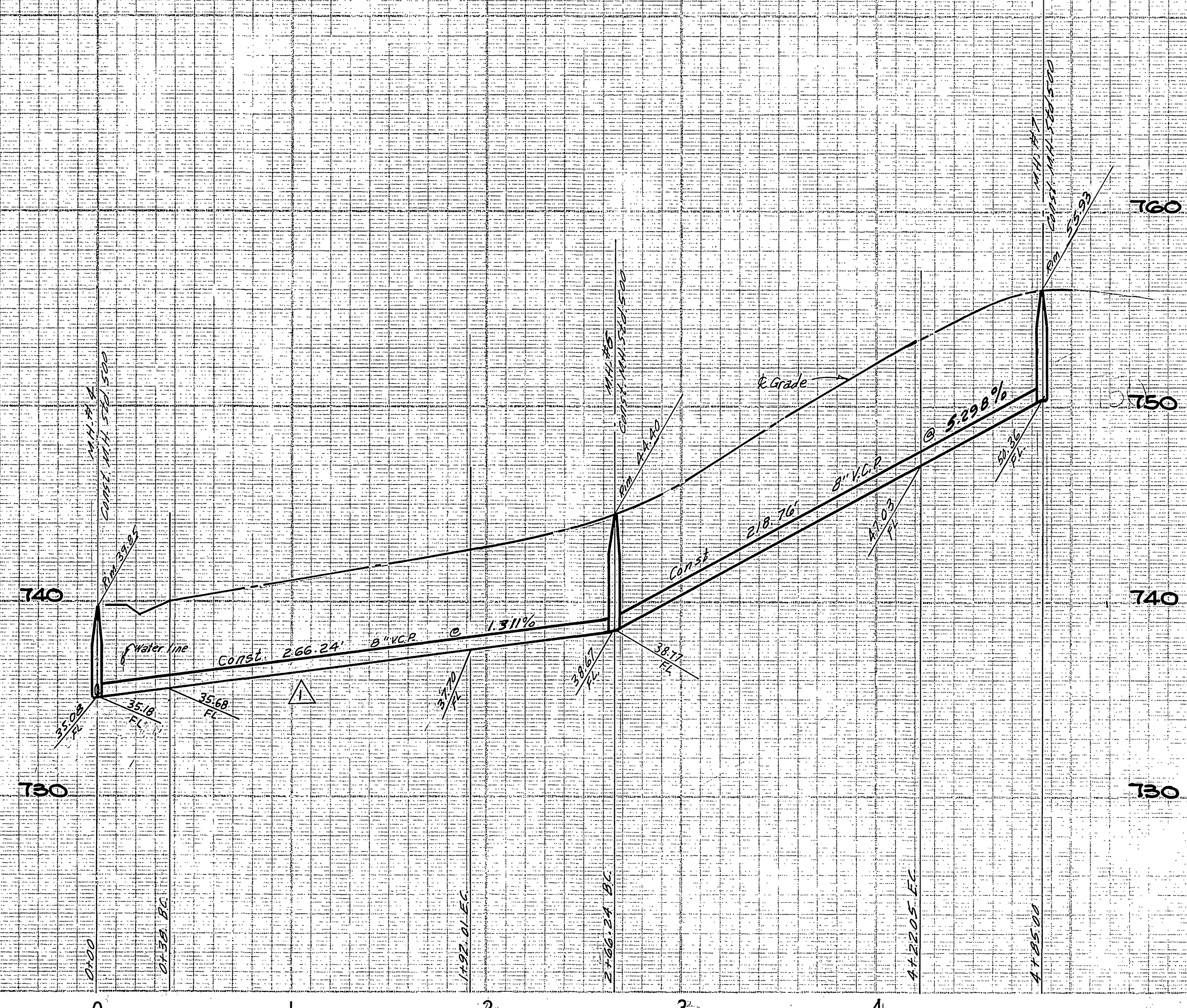
SEWER PLAN AND PROFILE
 WARREN STREET & MODESTO DRIVE

TRACT NO. 4150

As Per 4/29/70 etc.

ACCOUNT No. **S-844**
 DRAWING NUMBER
 SHEET 2 OF 3
 TO-241-B

SCALE: HORIZ. 1"=50'; VERT. 1"=5'



BENCH MARK

1. ELEV. 757.850, 5/4 ON S/W CURB RETURN SEQUOIA ST. & CALIF. AVE., CITY FB. 550/53.
2. ELEV. 752.297, CHISEL "X" ON THE CONC. H.W. MOST ELY. END SOUTH SIDE CHALLEN AVE. STA. 39+60.1.

ALBERT A. WEBB ASSOCIATES CIVIL ENGINEERS RIVERSIDE, CALIFORNIA APPROVED BY <i>E. N. Webb</i> DATE 12/23/70 R.E. No. 2876		Approved By <i>Howard L. Creamer</i> General Superintendent, Chief Engineer - Water Dept. Date 6-29-71		CITY OF RIVERSIDE, CALIFORNIA PUBLIC WORKS DEPARTMENT APPROVED BY <i>[Signature]</i> DATE 2-16-72 PRINCIPAL ENGINEER PARK DEPARTMENT TRAFFIC DIVISION CHIEF PUB. WKS. ENGR.		As Built 1/23/72 SEWER PLAN AND PROFILE DANIEL DRIVE TRACT 4150 SCALE: HORIZ. 1"=50', VERT. 1"=5'		ACCOUNT No. DRAWING NUMBER S-844 SHEET 3 OF 3 TO-241-B	
W.O. 70-238 FOR: WOODHAVEN DEV. F.B. 7018		DESIGNED BY REC DRAWN BY V.S. CHECKED BY REC BB		REVISIONS: <i>[Handwritten]</i>		DATE 11-18-71			