

GENERAL NOTES:
 1- ALL CONSTRUCTION SHALL BE IN ACCORDANCE WITH THE STANDARD SPECIFICATIONS FOR PUBLIC WORKS CONSTRUCTION 1970 EDITION AND STANDARD DRAWINGS OF THE CITY OF RIVERSIDE, DEPARTMENT OF PUBLIC WORKS. PIPE SHALL BE EMBEDDED PER CASE 1 STANDARD DRAWING NO. 452 UNLESS OTHERWISE SPECIFIED ON PLANS.

BENCH MARKS:
 R.R. Spike in Pole No. 685220-H, S.E. Cor. Jackson & Lincoln. F.B. 680/42 Elev. 878.347
 R.R. Spike in Pole No. 717321 on Nly. side of Lincoln between Jackson & Irving. F.B. R3/41 Elev. 867.007
 R.R. Spike in Pole No. 13282-J of S.W. Cor. Lincoln & Irving. F.B. R3/41 Elev. 858.137

RIVERSIDE WATER COMPANY

APPROVED BY: *Howard A. Brown* DATE: 7-6-71
 *AS BUILT 1-26-72 KRL

J. F. DAVIDSON ASSOCIATES
 CIVIL ENGINEERS - SURVEYORS - PLANNERS
 RIVERSIDE, CALIFORNIA

APPROVED BY: *John W. Canty* DATE: 12-9-70
 R.E. No. 17550

W.O. 2594 FOR Riverside Unified School Dist. F.B. 02/61
 DESIGNED BY R.L.S. DRAWN BY R.L.S. CHECKED BY J.W.C.

CITY OF RIVERSIDE, CALIFORNIA
 DEPARTMENT OF PUBLIC WORKS

APPROVED BY: *C. Lusk* DATE: 7/27
 OFFICE ENGINEER
 PARK DEPARTMENT
 TRAFFIC DIVISION
 ASSISTANT CITY ENGINEER

APPROVED BY: *James J. ...* DATE: 8-21-71
 DIRECTOR OF PUBLIC WORKS

-CAUTION-
PACIFIC TELEPHONE
CABLES UNDERGROUND
BEFORE EXCAVATING
CALL COLLECT.

After Hours & Holidays
 7:30 A.M. to 5 P.M.
 Orange County 714-633-0811 714-547-6606
 Riverside County 714-684-0071 714-547-6606
 Inyo County 714-684-0071 714-547-6606
 San Bernardino County 714-684-0071 714-547-6606
 Los Angeles County 213-621-3111 24 HOUR SERVICE
 Ventura County 213-621-3111
 San Diego County 714-298-0595 714-232-0027

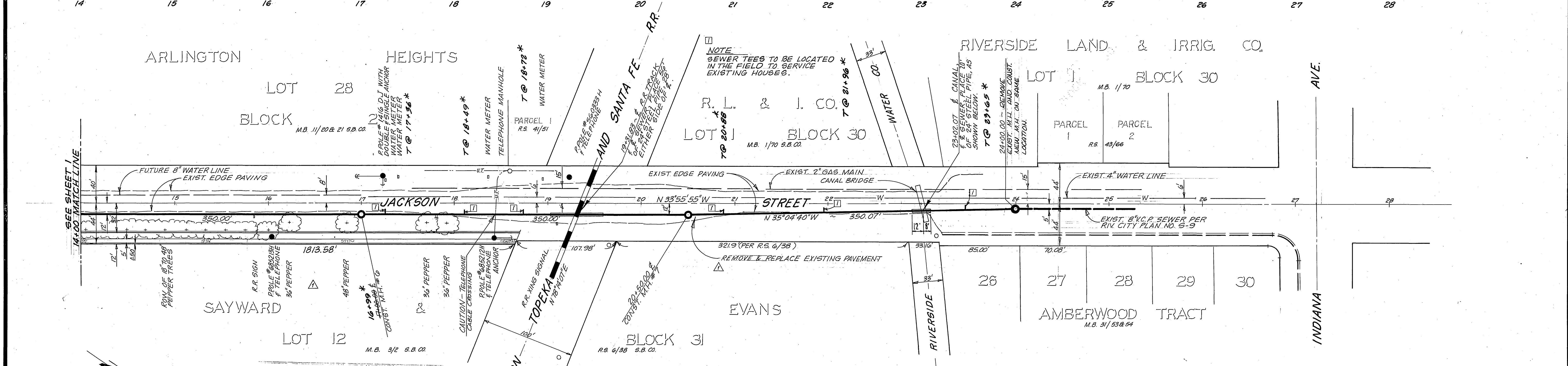
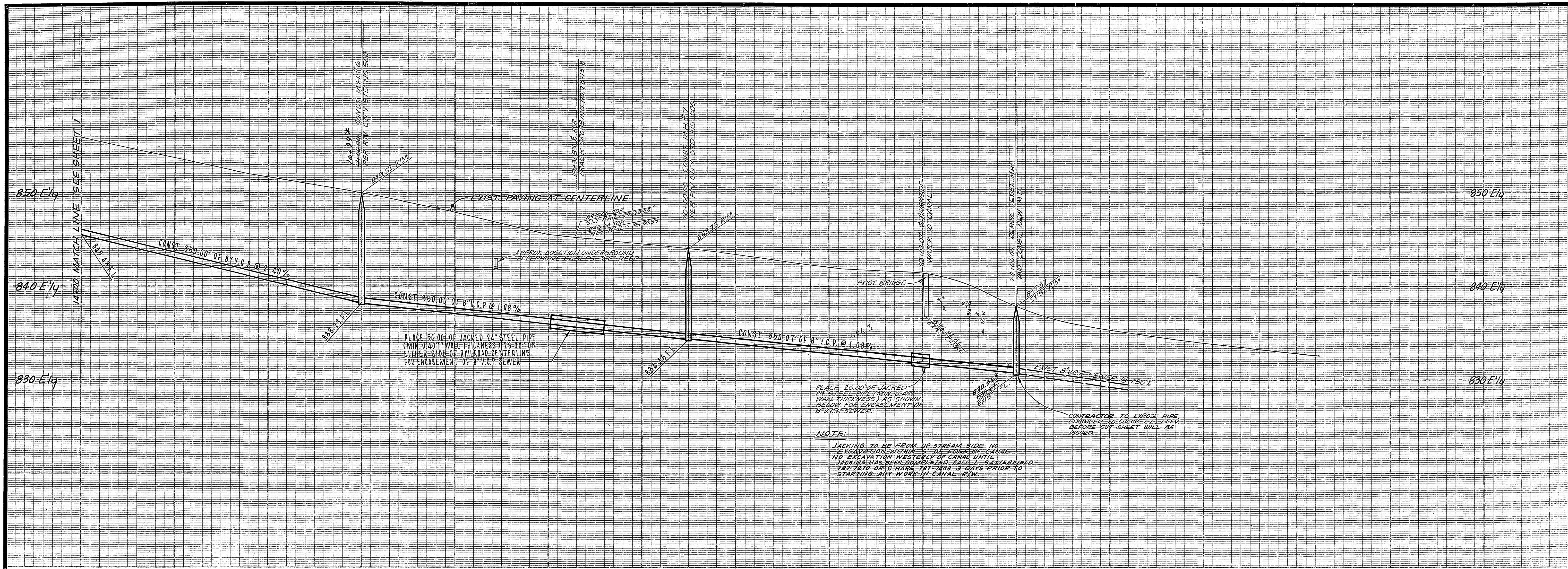
FOR FREE CABLE LOCATING SERVICE

INDEXED R.R. PROJECT NO. S-847

SEWER PLAN & PROFILE
 RIVERSIDE UNIFIED SCHOOL DIST.
 JACKSON ST.
 STA. 0+00.00 TO STA. 14+00.00
 C-43-701

SHEET 1 OF 2
 FILE NO. 3393

HORIZ. SCALE: 1" = 50'
 VERT. SCALE: 1" = 5'



-CAUTION-
PACIFIC TELEPHONE
CABLES UNDERGROUND
BEFORE EXCAVATING

CALL COLLECT:

Area	7:30 A.M. to 5 P.M. & Holidays	After Hours
Orange County	714-638-0811	714-547-6606
Riverside County	714-684-0071	714-547-6606
Inyo County	714-684-0071	714-547-6606
San Bernardino County	714-684-0071	714-547-6606
Los Angeles County	213-621-3111	213-621-3111
Ventura County	213-621-3111	213-621-3111
San Diego County	714-298-0595	714-232-0027

FOR FREE CABLE LOCATING SERVICE

J. F. DAVIDSON ASSOCIATES
CIVIL ENGINEERS - SURVEYORS - PLANNERS
RIVERSIDE, CALIFORNIA

APPROVED BY: *John W. Curtis* DATE 12-9-70
R.E. No. 17550

CITY OF RIVERSIDE, CALIFORNIA
DEPARTMENT OF PUBLIC WORKS

APPROVED BY: *[Signature]* DATE 9-2-71
OFFICE ENGINEER
PARK DEPARTMENT
TRAFFIC DIVISION
ASSISTANT CITY ENGINEER

SEWER PLAN & PROFILE
RIVERSIDE UNIFIED SCHOOL DIST.
JACKSON ST.
STA. 14+00.00 TO STA. 24+00.00
C-43-701

PROJECT NO. **S-847**
SHEET 2 OF 2
FILE NO. 3393

HORIZ. SCALE: 1" = 50'
VERT. SCALE: 1" = 5'

DESIGNED BY R.L.S. DRAWN BY R.L.S. CHECKED BY J.M.C.

* AS BUILT 1-26-72 K.M.L.

FOR BENCH MARKS, GENERAL AND CONSTRUCTION NOTES SEE SHEET 1