

QUANTITY ESTIMATE

4" VCP	1175 LF
8" VCP	1790 LF
8" x 4" WYES OR TEES	34 EA
MANHOLES	8 EA
CLEAN OUTS	2 EA
REMOVE EXIST CLEAN OUT	1 EA

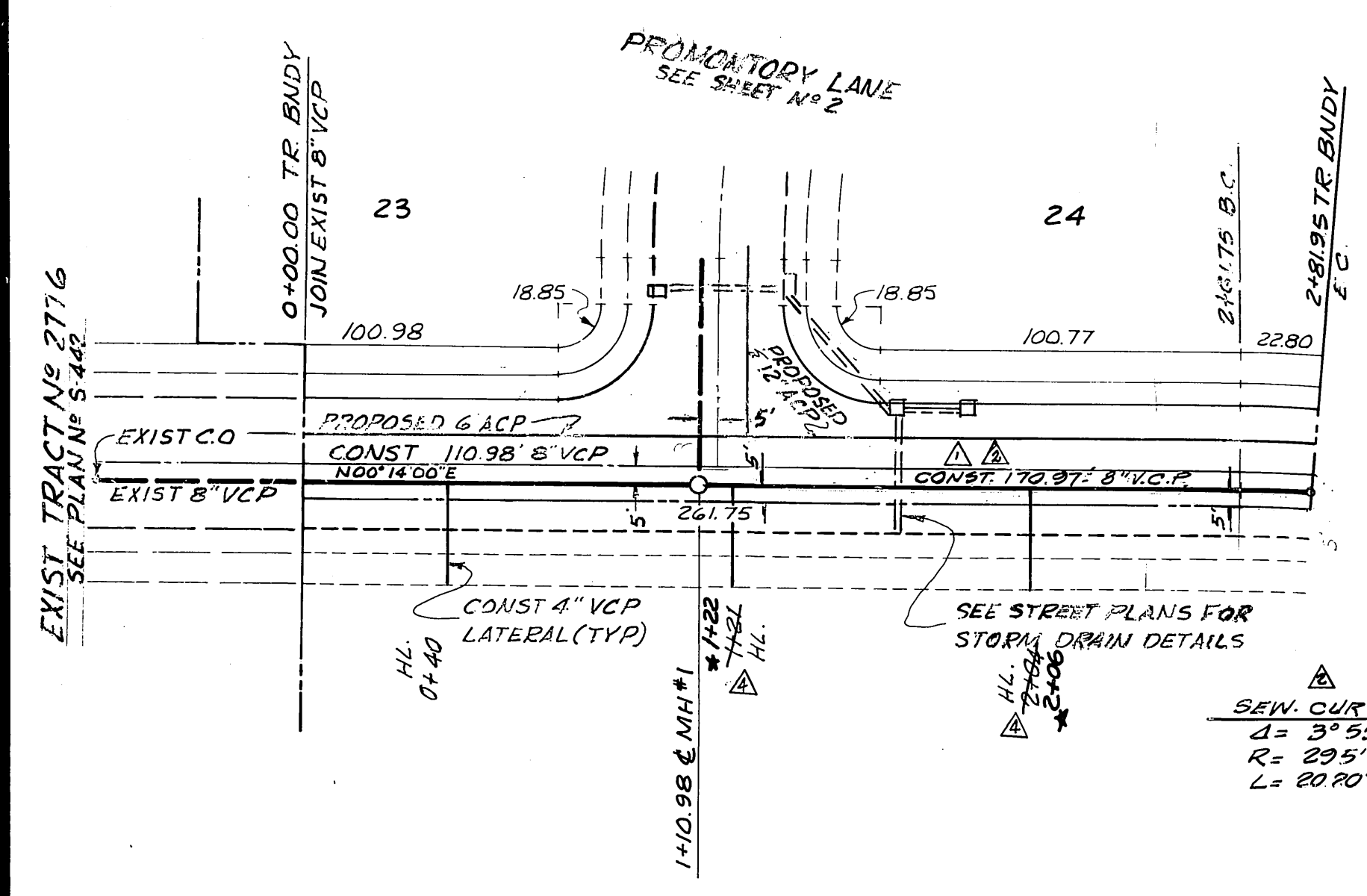
NOTE:
THE CITY HAS NOT CHECKED THIS QUANTITY ESTIMATE AND APPROVAL OF THESE PLANS DOES NOT CONFIRM THE ACCURACY OF THE ESTIMATE.

BENCH MARK
CHISELED 8 IN HW CURB RETURN
COURTLAND DR & WINDEMERE
WAY (PER TRACT 2776)
ELEV = 1225.02

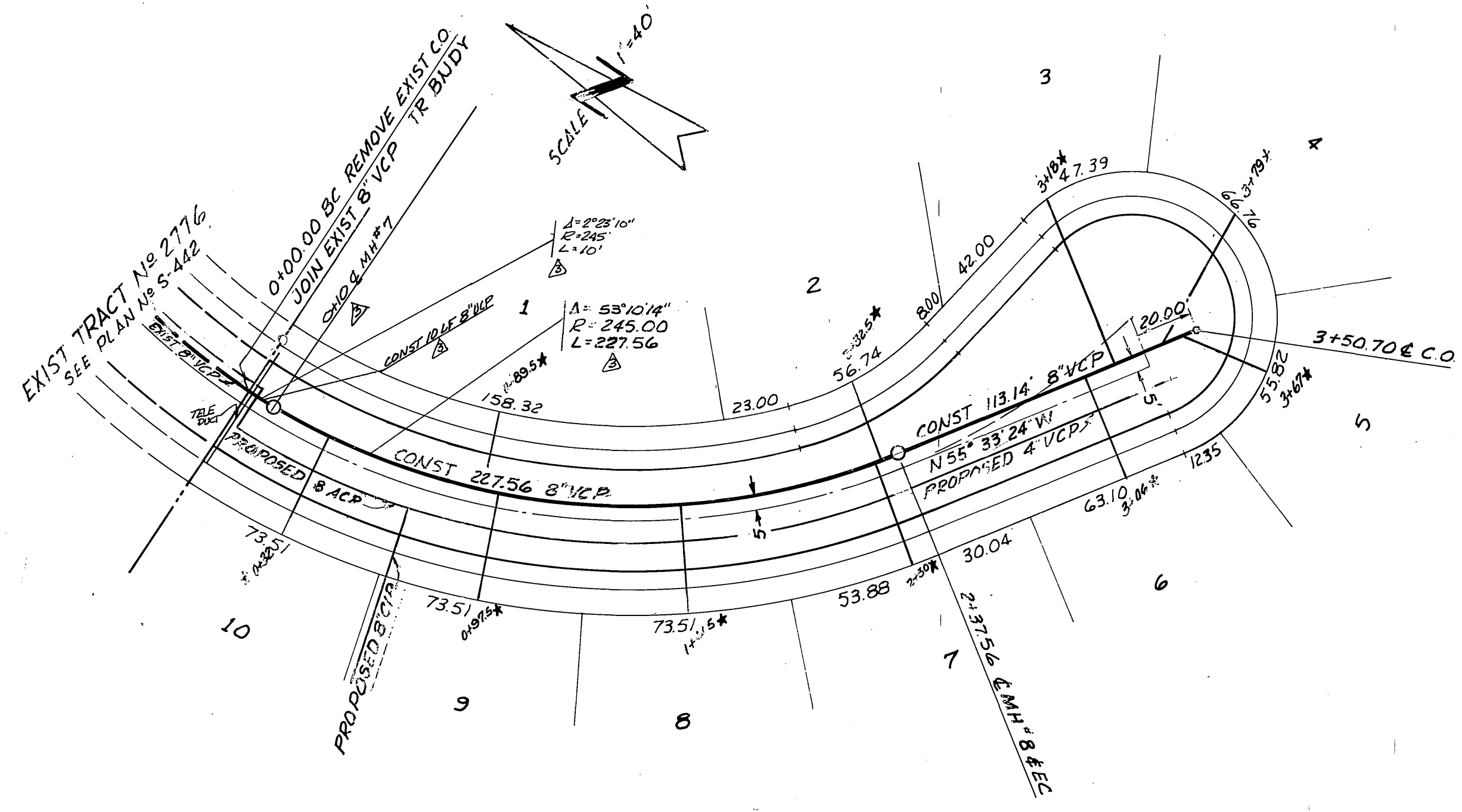
- GENERAL NOTES**
- CONSTRUCTION SHALL BE IN ACCORDANCE WITH STANDARD SPECIFICATION FOR PUBLIC WORKS CONSTRUCTION, 1970 EDITION, AND CITY OF RIVERSIDE STANDARD DRAWINGS.
 - IT SHALL BE THE RESPONSIBILITY OF THE CONTRACTOR TO CLEAR THE RIGHT OF WAY IN ACCORDANCE WITH THE PROVISIONS OF THE LAW AS IT AFFECTS EACH UTILITY INCLUDING IRRIGATION LINES AND APPURTENANCES AND AT NO COST TO THE CITY.
 - LOCATION OF TREES AND LATERALS TO BE DETERMINED AT THE DIRECTION OF THE OWNER.
 - MANHOLE FRAMES AND COVERS TO BE SET TO PROPOSED PAVEMENT GRADES.
 - LATERALS ARE TO 4" AND EXTENDED TO PROPERTY LINE.
 - PRIOR TO CONSTRUCTION OF SEWER, CONTRACTOR IS TO EXPOSE EXISTING SEWER AND CONTACT ENGINEER FOR VERIFICATION OF EXISTING ELEVATIONS.

NOTICE TO CONTRACTOR

THE EXISTENCE AND LOCATION OF ANY UNDERGROUND UTILITY PIPES OR STRUCTURES SHOWN ON THESE PLANS ARE OBTAINED BY A SEARCH OF THE AVAILABLE RECORDS. TO THE BEST OF OUR KNOWLEDGE, THERE ARE NO EXISTING UTILITIES EXCEPT AS SHOWN ON THESE PLANS. THE CONTRACTOR IS REQUIRED TO TAKE DUE PRECAUTIONARY MEASURES TO PROTECT THE UTILITY LINES SHOWN AND ANY OTHER LINES NOT OF RECORD OR NOT SHOWN ON THESE PLANS.



WINDEMERE WAY



OSWEGO DRIVE

vtm
ENGINEERS ARCHITECTS PLANNERS 2301 CAMPUS DRIVE, IRVINE, CALIFORNIA 92614 (714) 833-9300

APPROVED BY
Jack Mahoney
JACK MAHONEY 14925

DATE
5-16-71

APPROVED BY
William J. Mahoney
CHIEF PUBLIC UTILITIES ENGINEER-WATER DATE 8-2-71

APPROVED BY
OFFICE ENGINEER
PARK DEPARTMENT
TRAFFIC DIVISION
ASSISTANT CITY ENG.

DATE
8-2-71

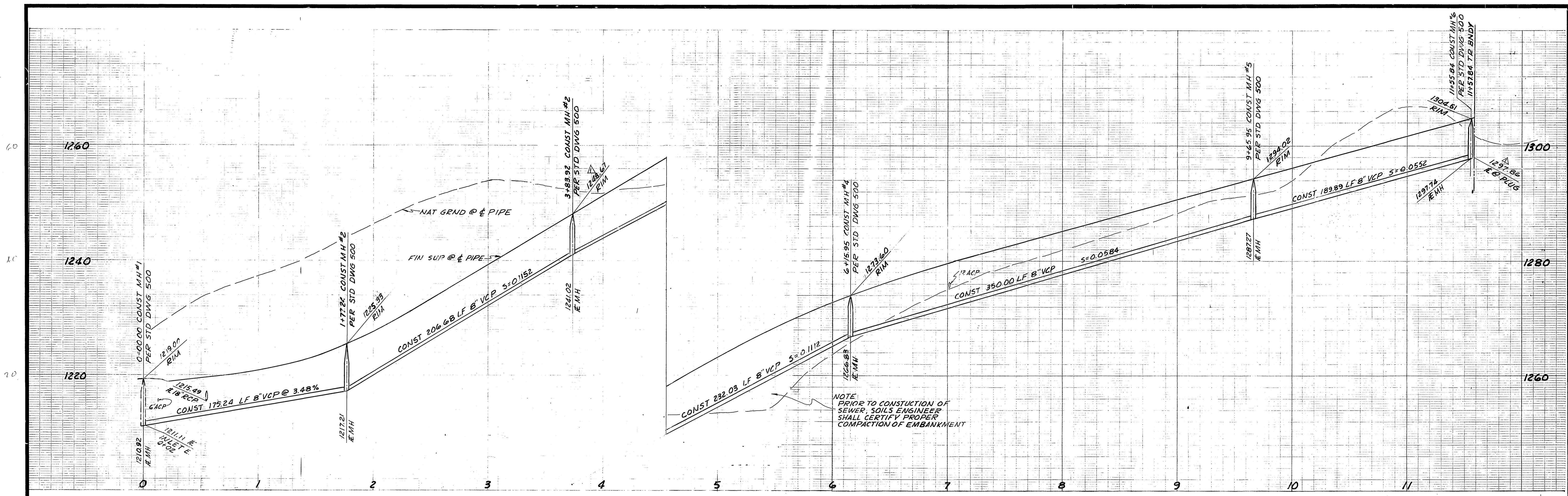
SEWER PLAN & PROFILE
WINDEMERE WAY
FROM 342' SLY COURTLAND DR TO 1224' SLY
OSWEGO DRIVE
FROM 443' SLY SHAKER DR TO 794' SLY
TRACT NO 4290

PROJECT NO.
S-849

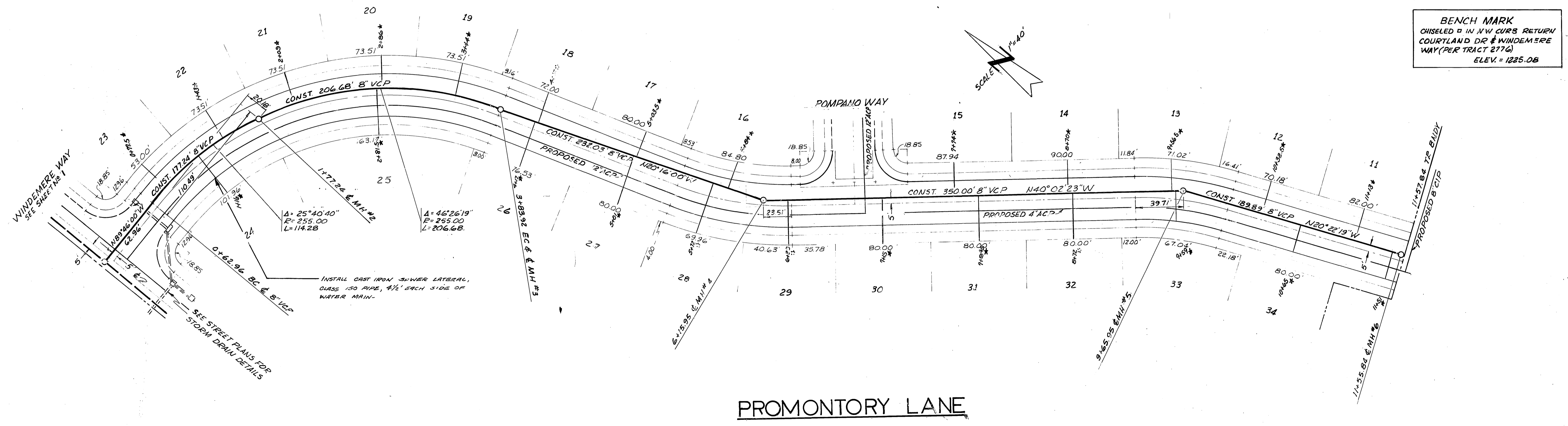
SHEET 1 OF 2

FILE NO.

HORIZ. SCALE: 1" = 40'
VERT. SCALE: 1" = 8'



NOTE: PRIOR TO CONSTRUCTION OF SEWER, SOILS ENGINEER SHALL CERTIFY PROPER COMPACTION OF EMBANKMENT



BENCH MARK
CHISELED IN N.W. CURB RETURN
COURTLAND DR & WINDEMERE
WAY (PER TRACT 2776)
ELEV. = 1285.08

PROMONTORY LANE

APPROVED BY:
Howard J. Prather 8-2-71
CHIEF PUBLIC UTILITIES & ENGINEER WATER

vtn
ENGINEERS ARCHITECTS PLANNERS 2301 CAMPUS DRIVE, RIVERSIDE, CALIFORNIA 92504 (714) 833-2400

APPROVED BY:
Jack Maloney 5-16-71
JACK MALONEY P.E. 3525

AS BUILT	7-73
DESIGNED BY	DRAWN BY
CHECKED BY	DATE

CITY OF RIVERSIDE, CALIFORNIA
DEPARTMENT OF PUBLIC WORKS

APPROVED BY:
William E. Hardin 8/4/71
DIRECTOR OF PUBLIC WORKS

SEWER PLAN & PROFILE
PROMONTORY LANE
FROM WINDEMERE WAY TO 1158' SLY
TRACT No 4290

PROJECT NO. **S-849**

SHEET 2 OF 2

FILE NO.

HORIZ. SCALE: 1" = 40' VERT. SCALE: 1" = 6'