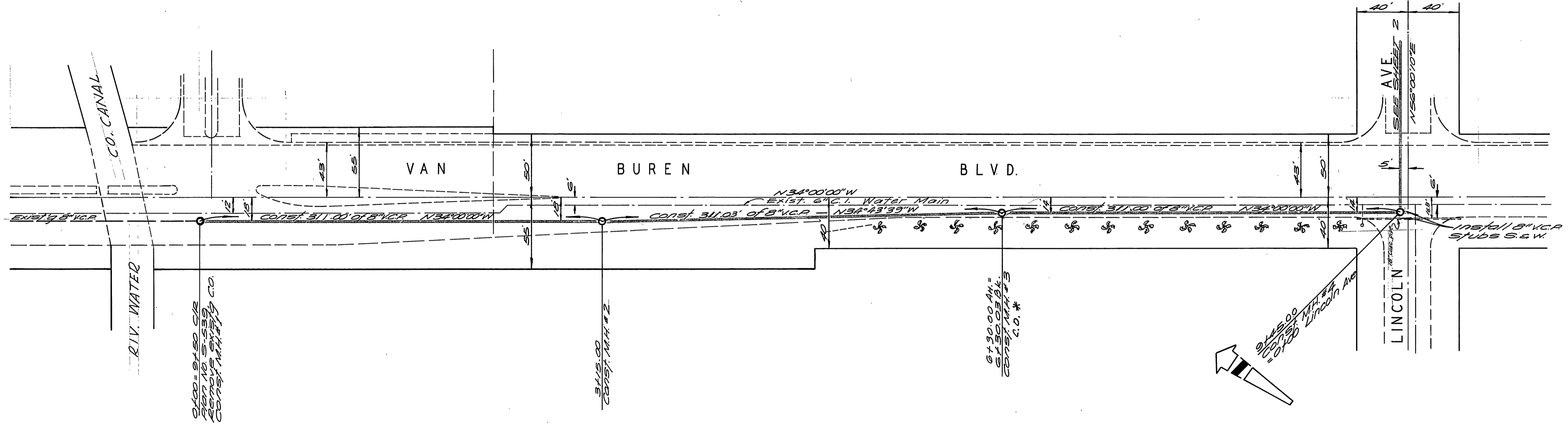


BENCH MARK
Elev 851.950 Brass disc 4" dia
(capped) at intersection of
Van Buren & Victoria - C/R F.B. 735/43

GENERAL NOTES

- 1) Construction shall be in accordance with the City of Riverside, Department of Public Works, Specifications 1970 Edition & Standard Drawings.
- 2) It shall be the responsibility of the contractor to clear the right of way in accordance with the provisions of the law as it affects such utility including irrigation lines and appurtenances and at no cost to the City.
- 3) Joints shall be in conformance to ASTM specifications C-425, or type I or II or to ASTM specifications C-504, 607 (sand cast) with certain exceptions or modifications as filed with the City Engineer.
- 4) Pipe shall be bedded per Case I, Standard Drawing No. 452, unless otherwise specified on plan.
- 5) All sumps to be constructed in accordance with Standard Drawing No. 562. Sumps shall be plugged and capped.



APPROVED BY *Edward J. Orlander*
General Superintendent, Chief Engineer
Water Dept.
Date: 8-9-71

* As built 9-24-85 7/2

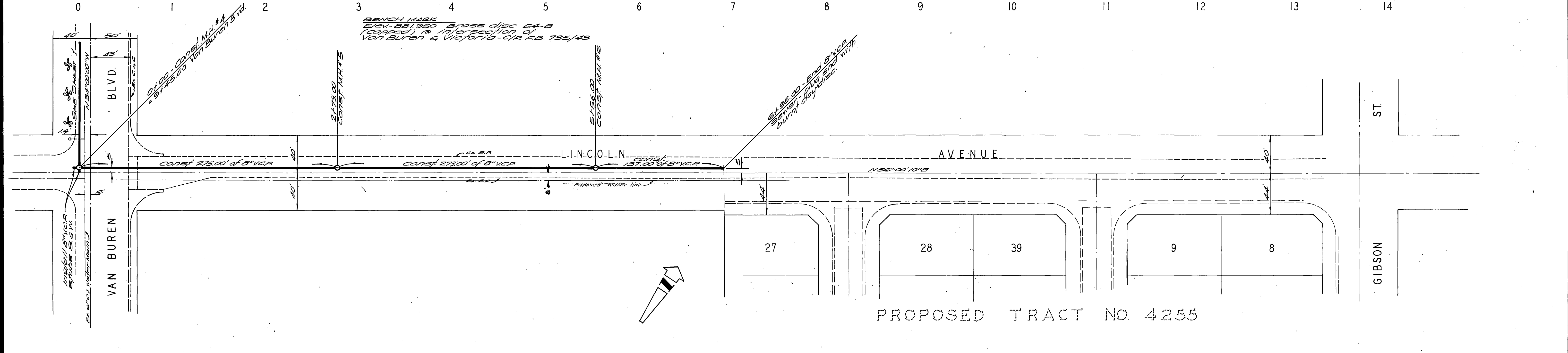
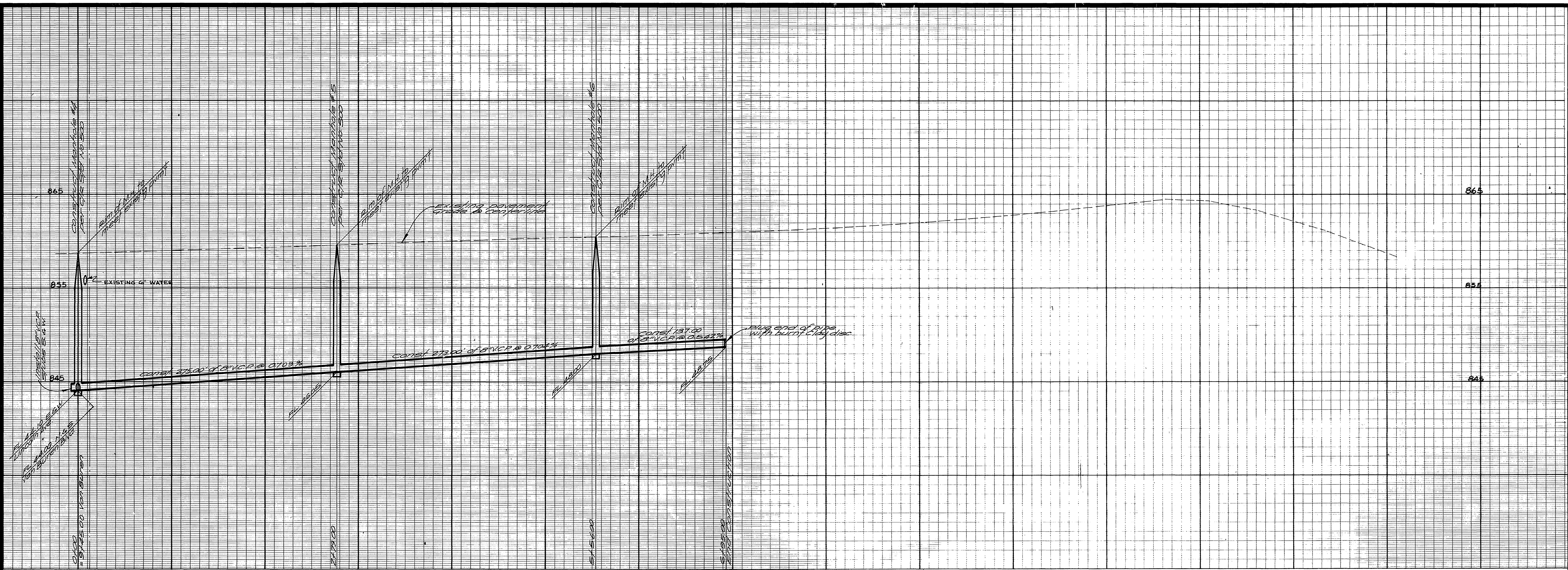
ALBERT A. WEBB ASSOCIATES
CIVIL ENGINEERS
RIVERSIDE, CALIFORNIA
APPROVED BY *Carl N. Webb* DATE 6/28/71
R.E. No. 2876

MARK	REVISIONS	APPR. DATE

CITY OF RIVERSIDE, CALIFORNIA
PUBLIC WORKS DEPARTMENT
APPROVED BY *Carl N. Webb* BY DATE *6/28/71*
PRINCIPAL ENGINEER
PARK DEPARTMENT
TRAFFIC DIVISION
CHIEF PUB. WKS. ENGR. *W. J. ...* DATE *8/19/71*

SEWER PLAN AND PROFILE
VAN BUREN - LINCOLN
SEWER EXTENSION
FOR TRACT 4255
SCALE: HORIZ. 1"=50' VERT. 1"=5'

ACCOUNT No.
DRAWING NUMBER
S-851
SHEET 1 OF 2
71-14



NOTICE TO CONTRACTOR
 The existence and location of any underground utility pipes or structures shown on these plans are obtained by a search of the available records. To the best of our knowledge, there are no existing utilities except as shown on these plans.
 The Contractor is required to take due precautionary measures to protect the utility lines shown and any other lines not of record or not shown on these plans.

ALBERT A. WEBB ASSOCIATES
 CIVIL ENGINEERS
 RIVERSIDE, CALIFORNIA
 APPROVED BY: *Ernest N. Webb* DATE: 6/28/71
 R.E. No. 2876

APPROVED BY: *Howard R. Coe*
 General Superintendent, Chief Engineer
 Water Dept.
 DATE: 8-9-71
 CITY OF RIVERSIDE, CALIFORNIA
 PUBLIC WORKS DEPARTMENT
 APPROVED BY: *W. W. ...*
 DIRECTOR OF PUBLIC WORKS
 CHIEF PUB. WKS. ENGR. *W. W. ...* DATE: 8/13/71

ACCOUNT No. _____
 DRAWING NUMBER
VAN BUREN - LINCOLN
SEWER EXTENSION
 FOR TRACT 4255
 SHEET 2 OF 2
 SCALE: HORIZ. 1"=50' VERT. 1"=5'
 71-14

MARK REVISIONS APPR. DATE
 DESIGNED BY: *REC* DRAWN BY: *EB* CHECKED BY: *LL*

W.O. 71-14 FOR: City of Riverside F.B. 1020