

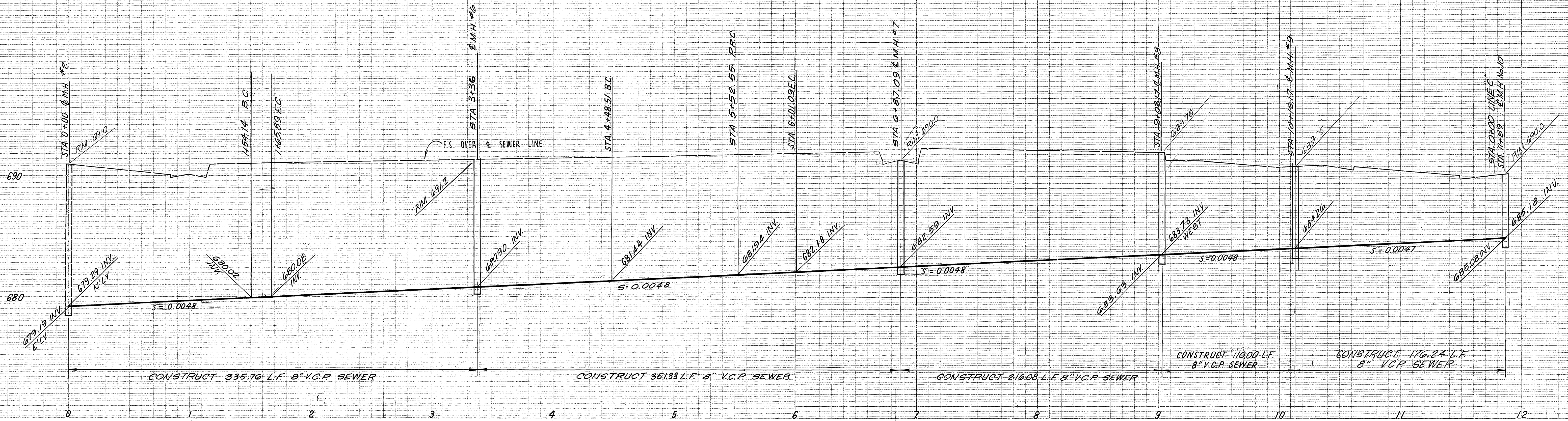
- CONSTRUCTION NOTES**
- ① INSTALL 8" V.C.P. SEWER LINE
  - ② CONSTRUCT SEWER M.H. PER CITY STD. DWG. #200
  - ③ RECHANNEL EXIST. M.H. BOTTOM
  - ④ CONSTRUCT 8" CLEAN-OUT PER CITY'S STD. DWG. # 560

- GENERAL NOTES**
1. ALL WORK SHALL BE IN CONFORMANCE WITH STANDARD SPECIFICATIONS FOR PUBLIC WORKS 1970 EDITION AND STANDARD DRAWINGS.
  2. ALL STATIONING REFERRED TO IS OF SEWER.
  3. ALL SEWER LENGTHS ARE HORIZONTAL LENGTHS.
  4. ALL LATERALS ARE TO BE STAKED BY A SURVEYOR BEFORE TRENCHING.
  5. SEWER CONTRACTOR TO HAVE A COPY OF THE CITY OF RIVERSIDE STANDARD SPECIFICATIONS ON THE JOB.

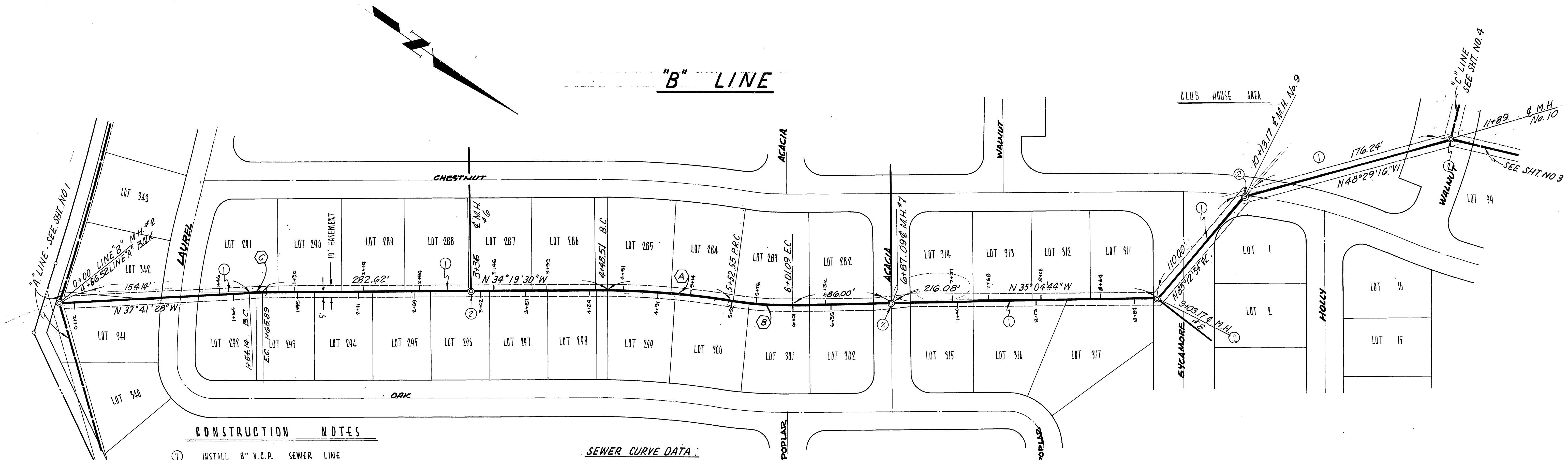
PREPARED IN THE OFFICE OF  
**WILLIAM G. CHURCH**  
 CONSULTING CIVIL ENGINEERS  
 3928 CAMPUS DRIVE  
 NEWPORT BEACH  
 CALIFORNIA 92660  
 PHONE (714) 540-7377

*John J. Mullen* 6-22-71  
 JOHN A. MULLEN R.C.E. #522

BENCH MARK ~ F.B. 704-17 P.K. NAIL IN LEAD IN N.O. CORNER OF EAST HEADWALL OF FLOOD CONTROL CHANNEL 300' N'LY OF FWY. CROSSING AT PIERCE ST. ELEV. = 690.521	CITY OF RIVERSIDE, CALIFORNIA DEPARTMENT OF PUBLIC WORKS APPROVED BY: [Signature] OFFICE ENGINEER: [Signature] PARK DEPARTMENT: [Signature] TRAFFIC DIVISION: [Signature] ASSISTANT CITY ENG.: [Signature]	SEWER IMPROVEMENT PLAN N/W CORNER <b>PIERCE ST &amp; RIVERSIDE FWY.</b> P.M.#37 C-29-701	PROJECT NO. <b>S-853</b>
			SHEET 1 OF 4 FILE NO.
DESIGNED BY: [Signature] DRAWN BY: [Signature] CHECKED BY: [Signature]	DATE: 8/30/71	HORIZ. SCALE: 1" = 40' VERT. SCALE: 1" = 4'	INDEXED R.B.



**"B" LINE**



**CONSTRUCTION NOTES**

- ① INSTALL "B" V.C.P. SEWER LINE
- ② CONSTRUCT SEWER M.H. PER STD. DWG. No. 500

**SEWER CURVE DATA:**

A	$\Delta = 8^{\circ}30'58''$ R = 700.00' L = 104.04' T = 52.12'
B	$\Delta = 9^{\circ}16'12''$ R = 300' L = 48.54' T = 24.32'
C	$\Delta = 3^{\circ}21'58''$ R = 200' L = 11.75' T = 5.88'

**BENCH MARK ~ F.B. 104-17**  
P.K. NAIL IN LEAD IN NO. CORNER OF EAST HEADWALL OF FLOOD CONTROL CHANNEL 300' N'LY OF HWY. CROSSING AT PIERCE ST.  
ELEV. = 690.521

PREPARED IN THE OFFICE OF  
**WILLIAM G. CHURCH**  
CONSULTING CIVIL ENGINEERS  
3928 CAMPUS DRIVE  
NEWPORT BEACH  
CALIFORNIA 92660  
PHONE (714) 540-7377

*John J. Mullen* 5-10-71  
JOHN J. MULLEN R.C.E. 15822

CITY OF RIVERSIDE, CALIFORNIA  
DEPARTMENT OF PUBLIC WORKS

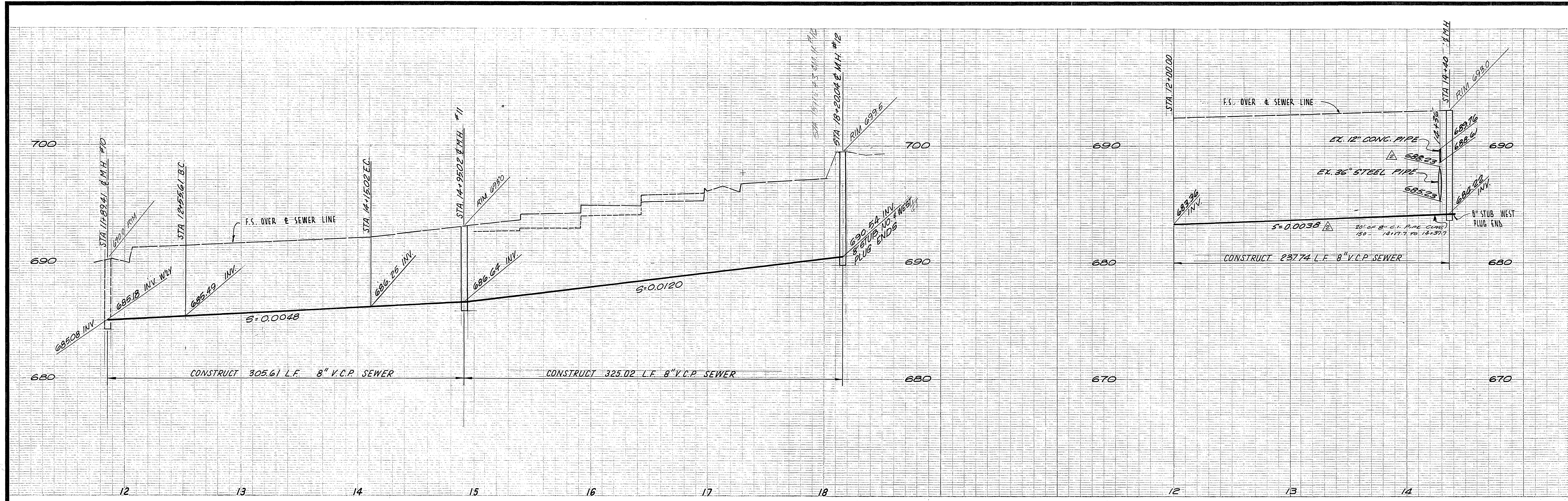
APPROVED BY: [Signature]  
DATE: 8/30/71  
OFFICE ENGINEER: [Signature]  
PARK DEPARTMENT: [Signature]  
TRAFFIC DIVISION: [Signature]  
ASSISTANT CITY ENG.: [Signature]

**SEWER IMPROVEMENT PLAN**  
N/W CORNER  
**PIERCE ST. & RIVERSIDE FWY.**

R.M. # 37 & C-29-701  
HORIZ. SCALE: 1" = 40'  
VERT. SCALE: 1" = 4'

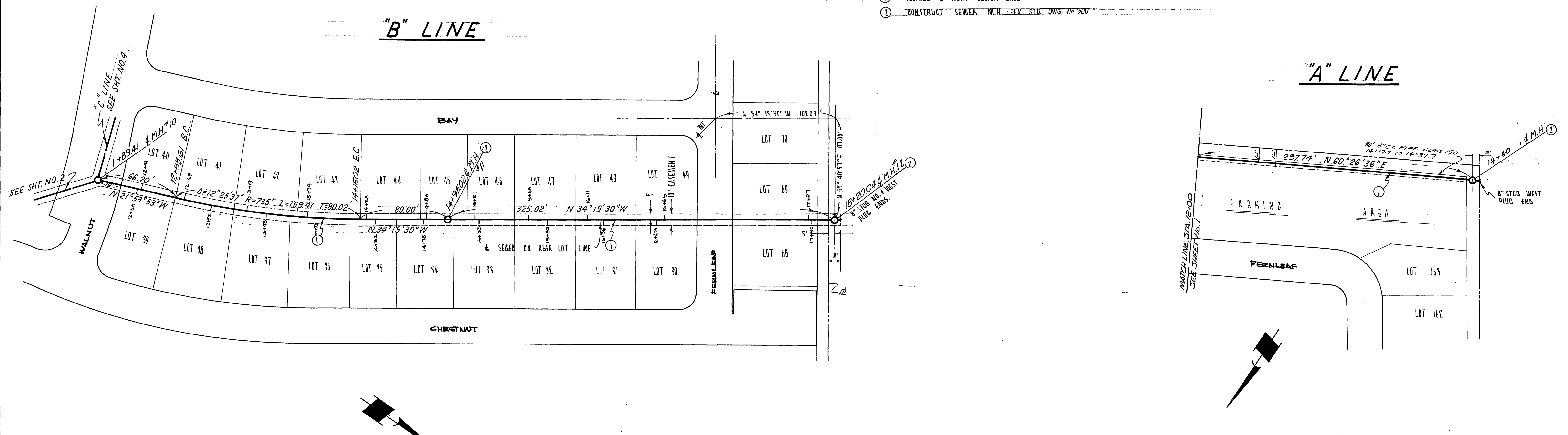
PROJECT NO.  
**S-853**  
SHEET 2 OF 4  
FILE NO.

As Built 4/27/72 L.L.



**CONSTRUCTION NOTES**

- ① INSTALL 8" V.C.P. SEWER LINE
- ② CONSTRUCT SEWER M.H. PER STD DWG. No. 300



PREPARED IN THE OFFICE OF  
**WILLIAM G. CHURCH**  
 CONSULTING CIVIL ENGINEERS  
 3928 CAMPUS DRIVE  
 NEWPORT BEACH  
 CALIFORNIA 92660  
 PHONE (714) 540-7377

*John J. Mullen* 6-22-71  
 JOHN J. MULLEN R.C.E. 15822

**BENCH MARK ~ F.B. 104-17**  
 P.V. NAIL IN LEAS IN NO. CORNER  
 OF EAST HEADWALL OF FLOOD CONTROL  
 CHANNEL 300' N'LY OF FWY CROSS-  
 ING AT PIERCE ST.  
 ELEV. = 690.521

MARK	DESIGNED BY	DRAWN BY	CHECKED BY
REVISIONS	APPR.	DATE	

CITY OF RIVERSIDE, CALIFORNIA  
 DEPARTMENT OF PUBLIC WORKS

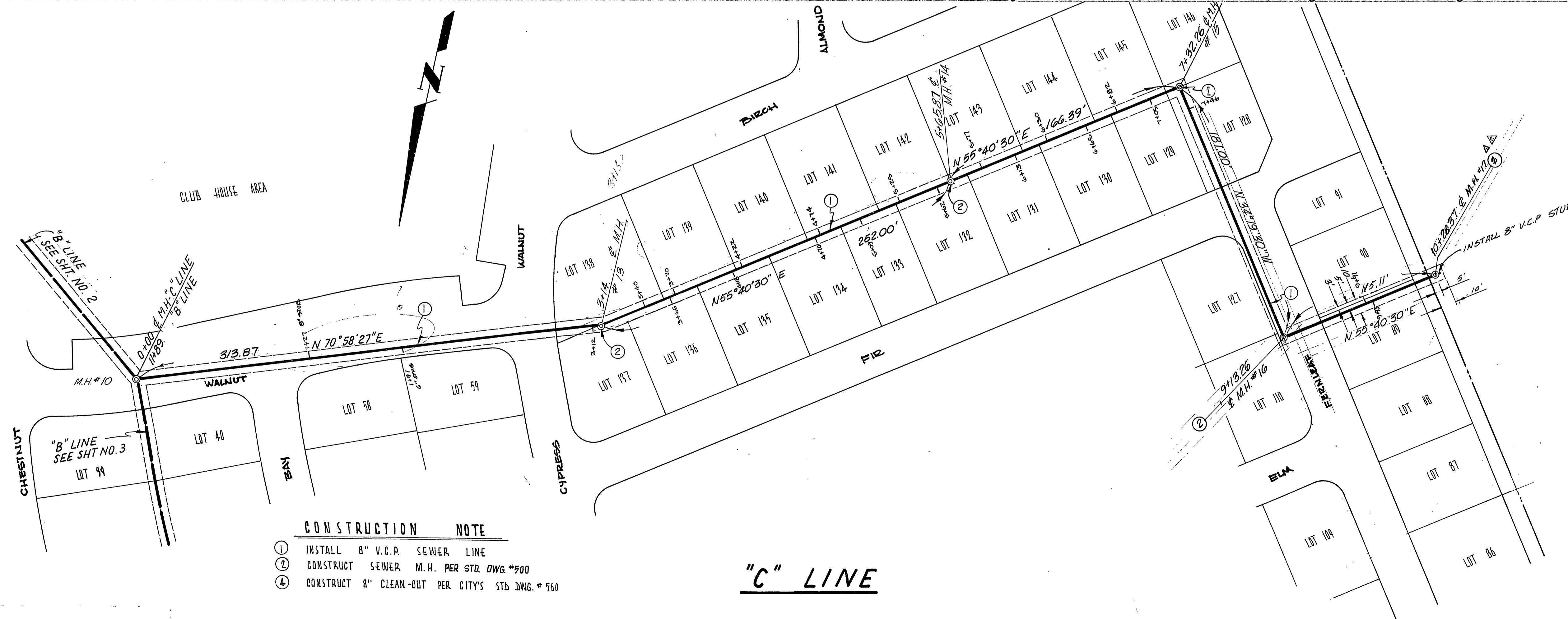
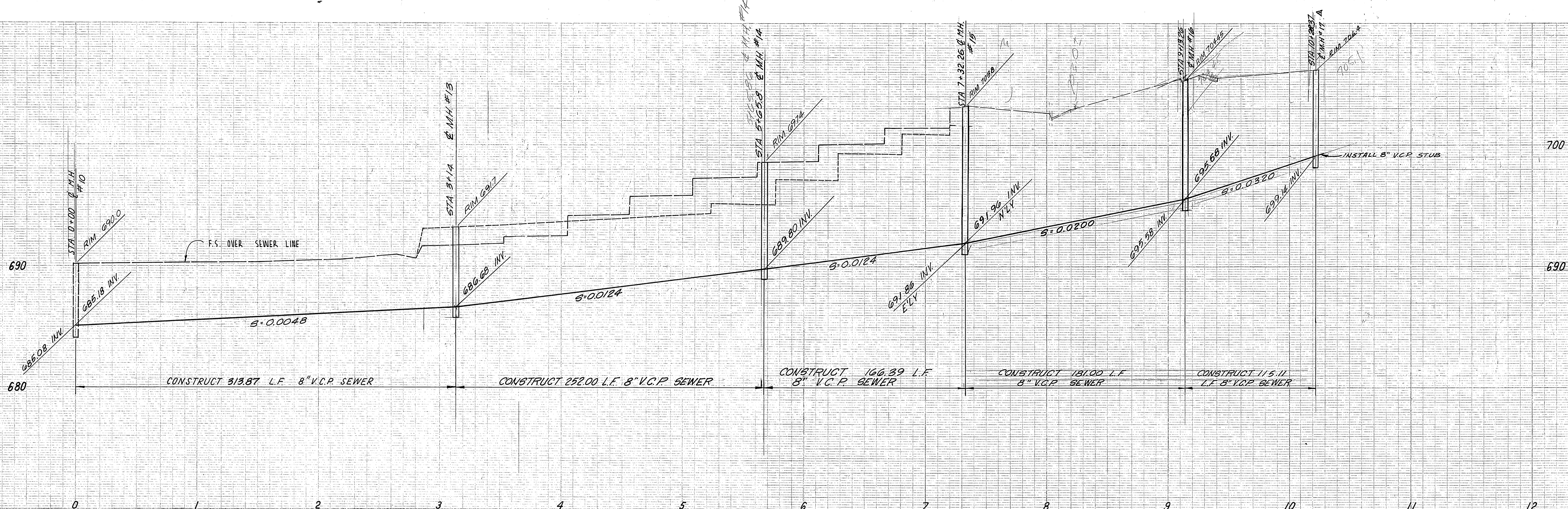
APPROVED BY: *[Signature]*  
 OFFICE ENGINEER  
 PARK DEPARTMENT  
 TRAFFIC DIVISION  
 ASSISTANT CITY ENG.

BY: *[Signature]*  
 DATE: 8/30/71

**SEWER IMPROVEMENT PLAN**  
 N/W CORNER  
**PIERCE ST. & RIVERSIDE FWY.**

PROJECT NO. **S-853**  
 SHEET **3** OF **4**  
 FILE NO. **J.N. 290**

HORIZ. SCALE: 1" = 40' VERT. SCALE: 1" = 4'



- CONSTRUCTION NOTE**
- ① INSTALL 8" V.C.P. SEWER LINE
  - ② CONSTRUCT SEWER, M.H. PER STD. DWG. #900
  - ③ CONSTRUCT 8" CLEAN-OUT PER CITY'S STD. DWG. # 560

**"C" LINE**

PREPARED IN THE OFFICE OF  
**WILLIAM G. CHURCH**  
 CONSULTING CIVIL ENGINEERS  
 3925 CAMPUS DRIVE  
 NEWPORT BEACH  
 CALIFORNIA 92660  
 PHONE (714) 540-7377

*John J. Mullen*  
 JOHN J. MULLEN  
 6-27-71  
 R.C.E. 19822

**BENCH MARK ~ F.B. 104-17**  
 P.K. NAIL IN LEAD IN NO. CORNER  
 OF EAST HEADWALL OF FLOOD CONTROL  
 CHANNEL 300' N'LY OF FWY. CROSS-  
 ING AT PIERCE ST.  
 ELEV. = 690.521

MARK	REVISIONS	APPR.	DATE
△	MOVED M.H. TO PROPER LOCATION		8/30/71
△	CHANGED CLEAN OUT TO MANHOLE		8/30/71

**CITY OF RIVERSIDE, CALIFORNIA**  
 DEPARTMENT OF PUBLIC WORKS

APPROVED BY: *[Signature]*  
 OFFICE ENGINEER  
 PARK DEPARTMENT  
 TRAFFIC DIVISION  
 ASSISTANT CITY ENG.

DATE: 8/30/71

SEWER IMPROVEMENT PLAN  
 N/W CORNER  
**PIERCE ST. & RIVERSIDE FWY.**

P.M.#37 & C-29-701

HORIZ. SCALE: 1" = 40'  
 VERT. SCALE: 1" = 4'

PROJECT NO. **S-853**  
 SHEET 4 OF 4  
 FILE NO.