

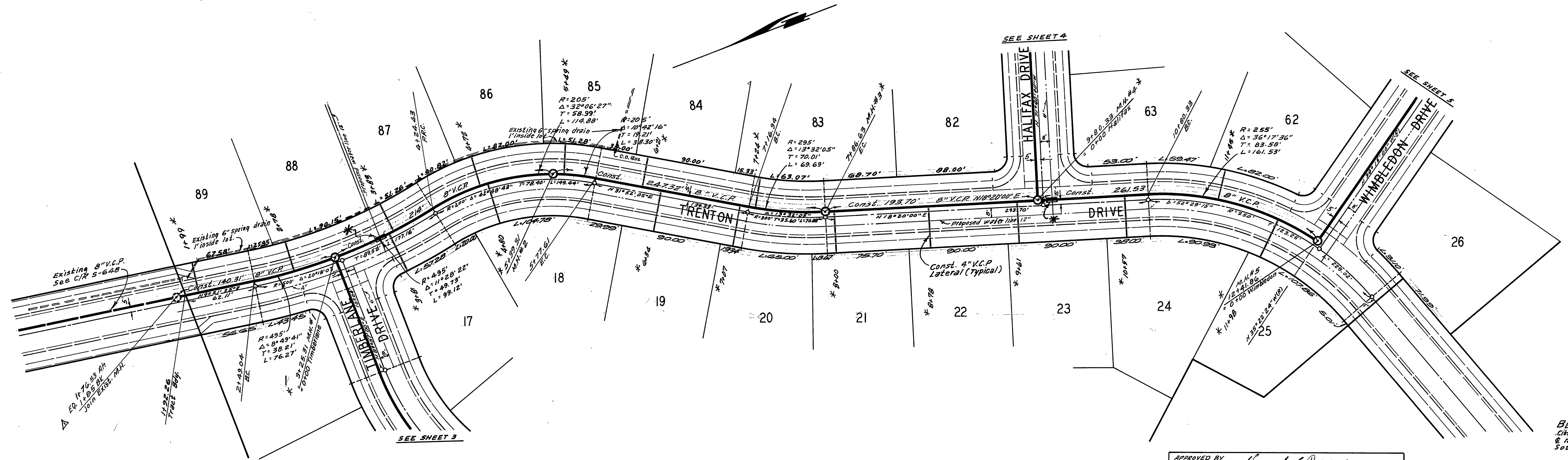
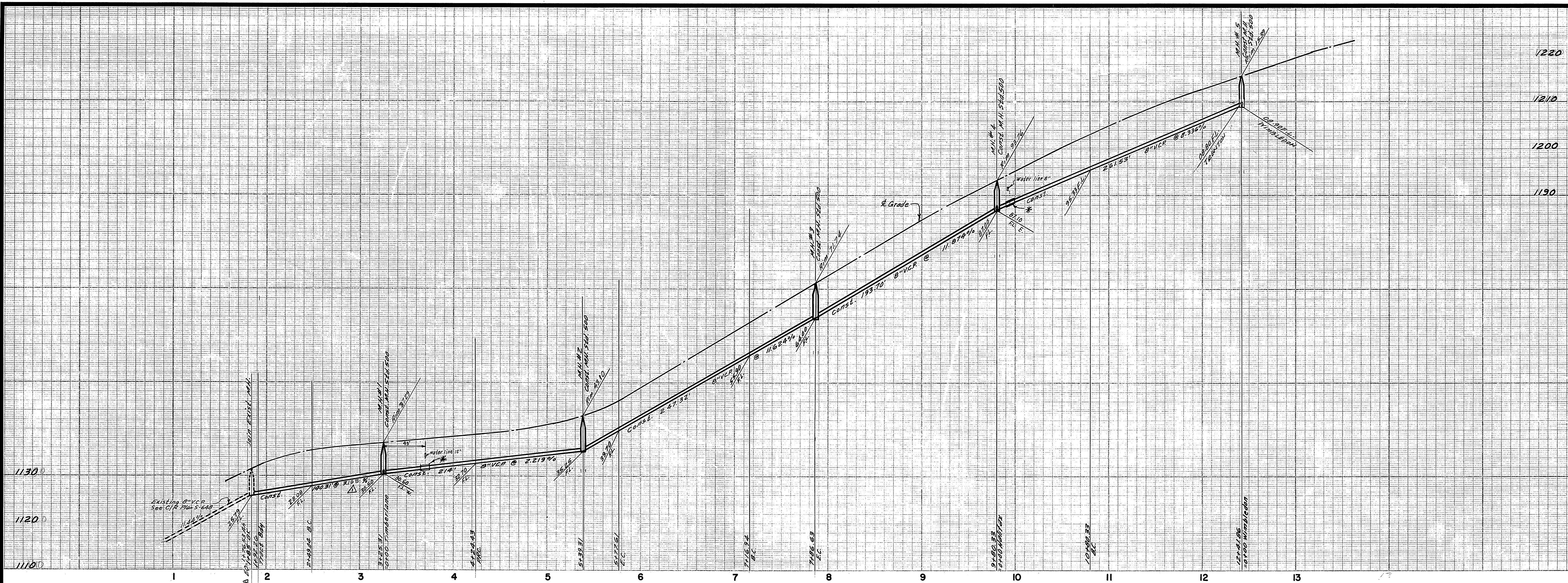
GENERAL NOTES
 1. Construction shall be in accordance with the City of Riverside, Department of Public Works, Specifications 1970 Edition and Standard Drawings.

SPECIAL NOTE
 At all sewer main or lateral crossing of water mains shown *, sewer shall be constructed per type "C" encasement per Public Utilities Dept. Std. Dwg. No. CWP-023 for 4 1/2 feet on each side of the water main or with Cast Iron Pipe AWWA C102, C106, C108 Class 150 or equal.

BENCH MARK: Elev. 1107.66 P.K. nail and City Tag on conc. base of light standard 1/2 E. median westside of intersection of Via Satele & Country Club Dr. City F.B. 064/35

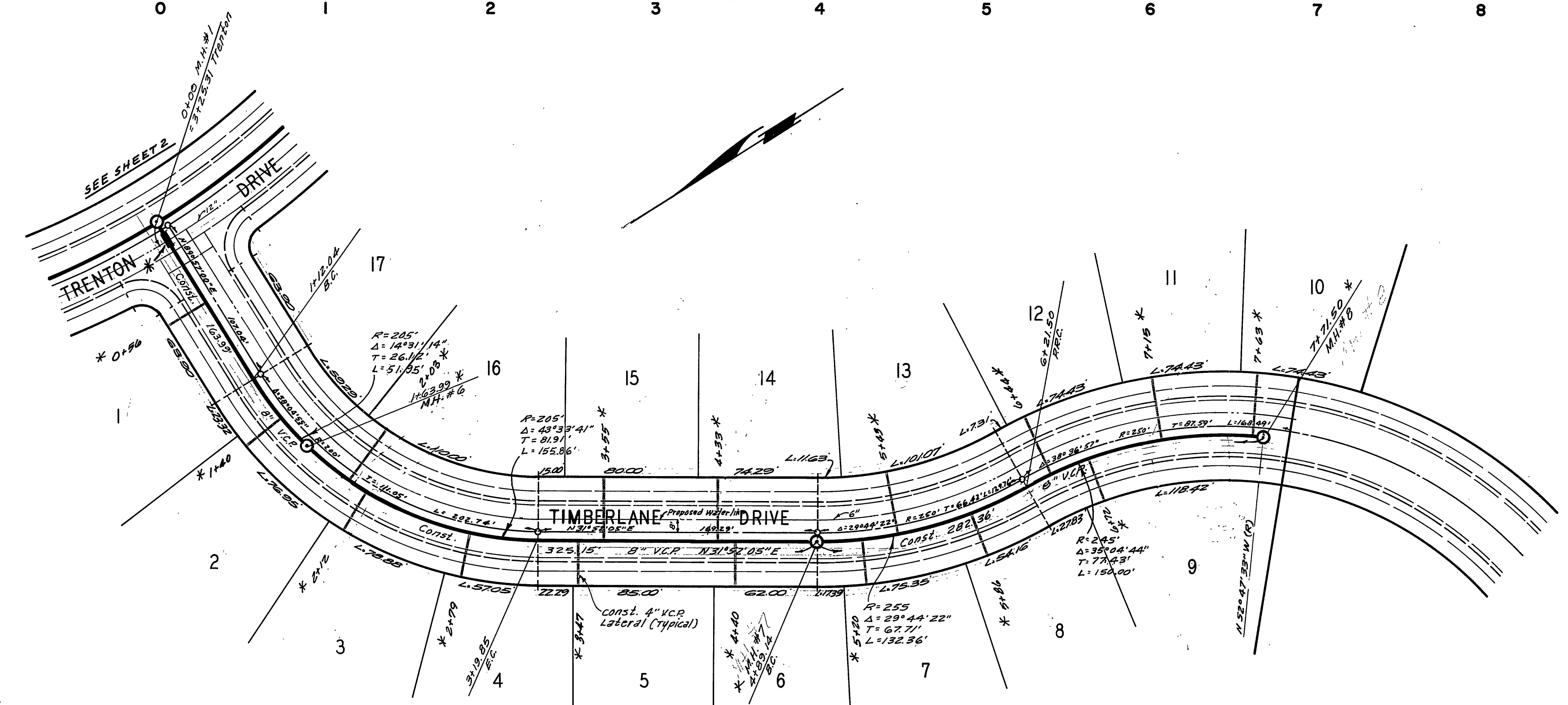
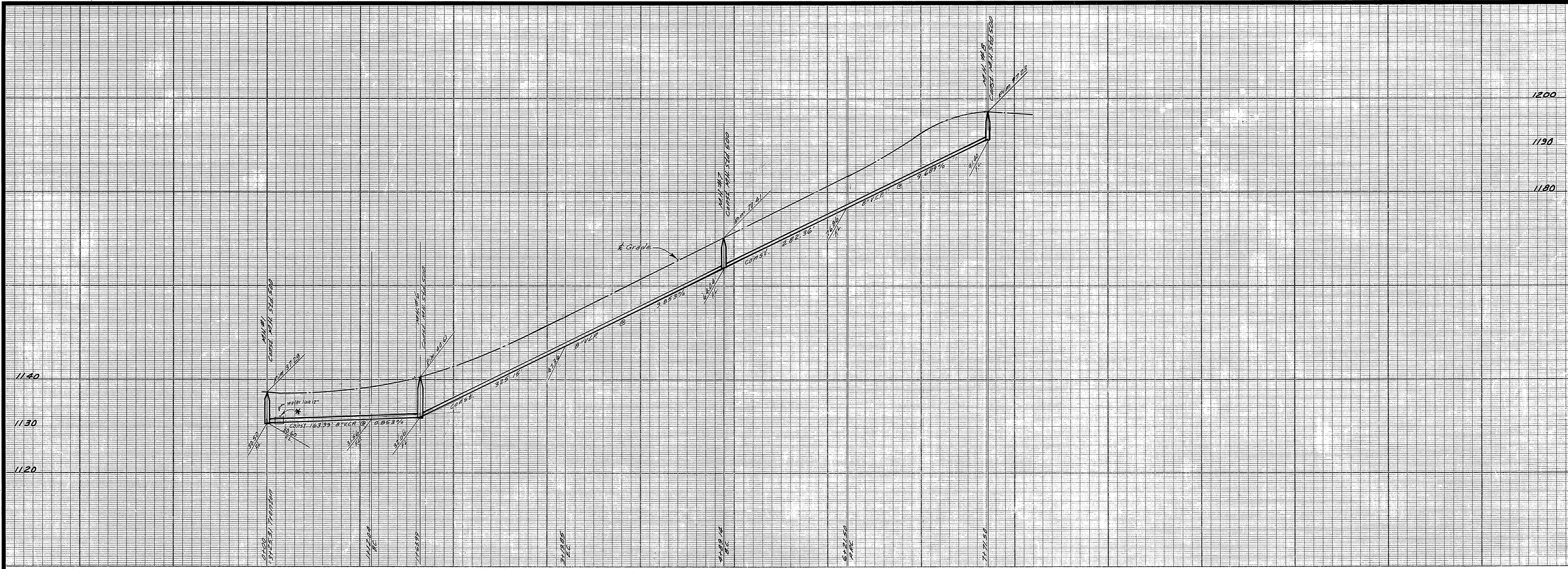
*AS BUILT 2-7-76 LMBL

ALBERT A. WEBB ASSOCIATES CIVIL ENGINEERS RIVERSIDE, CALIFORNIA APPROVED BY: <i>Paul N. Webb</i> DATE 8/18/71 R.E. No. 9876 W.O. 68-258 FOR: Hicks & Badraun 675 F.B. 101A		APPROVED BY: <i>Howard R. Denson</i> DATE 9-17-71 CITY OF RIVERSIDE, CALIFORNIA DEPARTMENT OF PUBLIC WORKS OFFICE ENGINEER PARK DEPARTMENT TRAFFIC DIVISION ASSISTANT CITY ENG.		SEWER PLAN AND PROFILE INDEX MAP TRACT NO. 3825 PROJECT NO. S-855 SHEET 1 OF 9 FILE NO. 68-258-B	
DESIGNED BY: BEL DRAWN BY: BEL CHECKED BY:		REVISIONS APPR. DATE		APPROVED BY: <i>William P. Jordan</i> DIRECTOR OF PUBLIC WORKS DATE 9/17/71 HORIZ. SCALE: 1" = 200' VERT. SCALE: 1" =	



BENCH MARK: Elev. 1107.66 P.K. 111 of City 101 on conc. base of light standard in E median west of intersection of Via Solera Country Club Dr. City R.S. 86/75

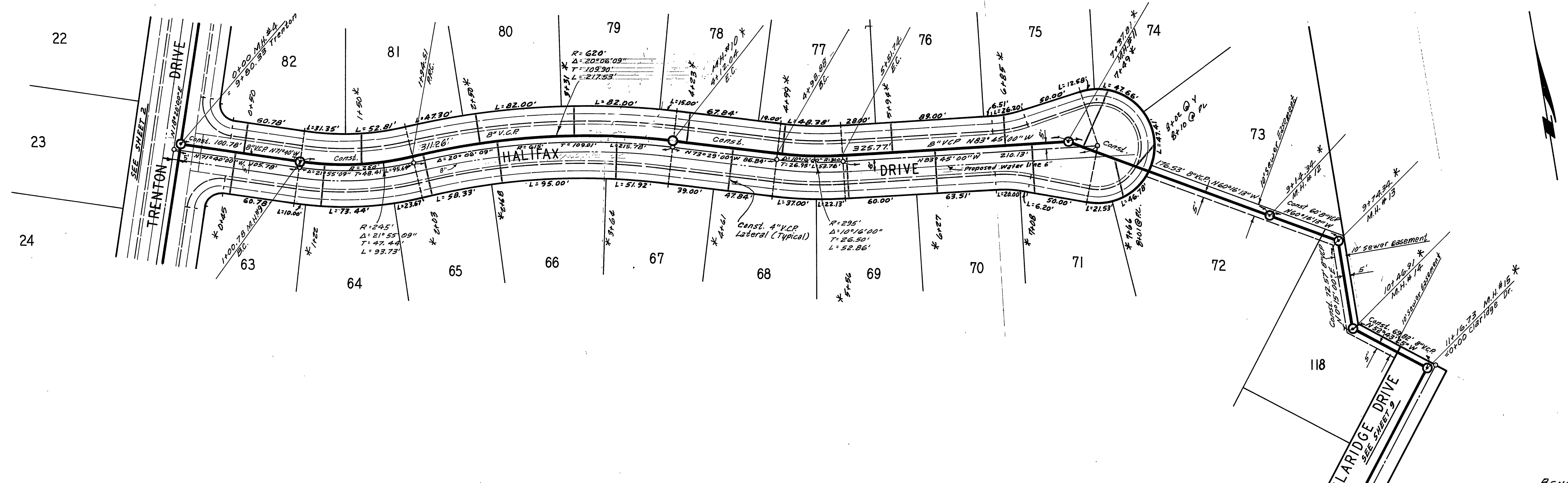
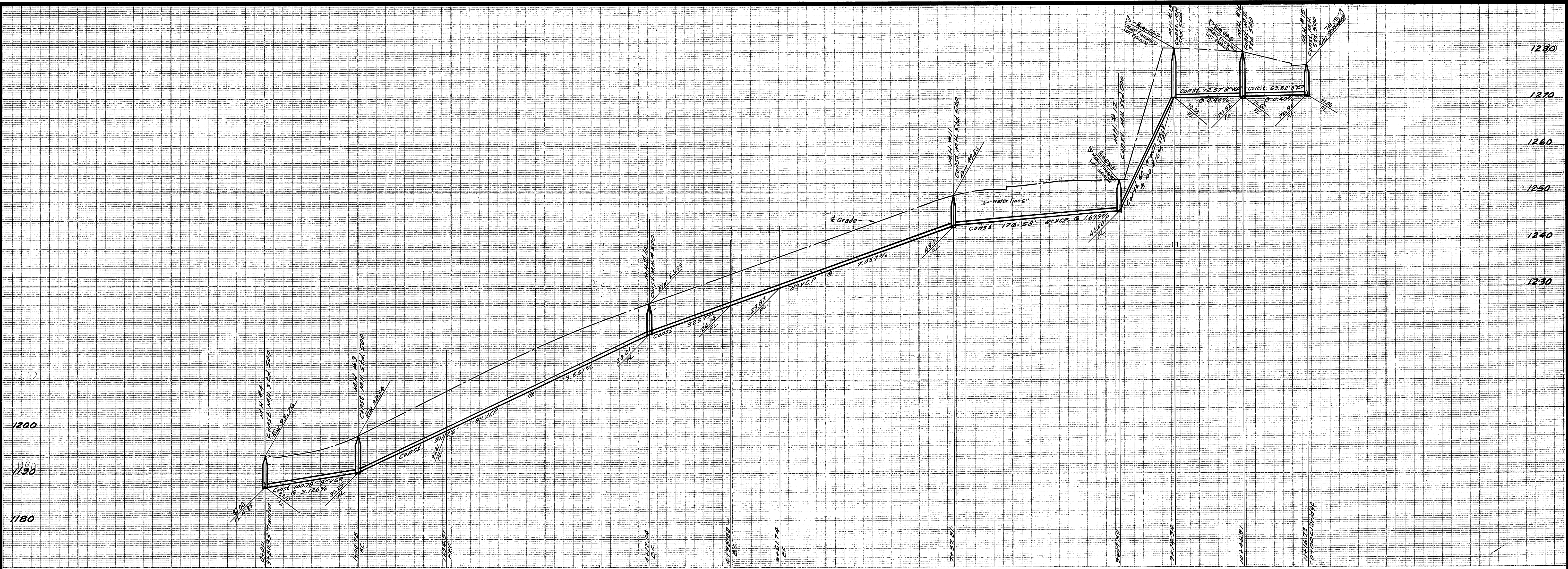
ALBERT A. WEBB ASSOCIATES CIVIL ENGINEERS RIVERSIDE, CALIFORNIA APPROVED BY <i>E. N. Webb</i> DATE 8/18/71 R.E. No. 9876		APPROVED BY <i>Howard D. Gorman</i> General Superintendent of Civil Eng'g, Water Dept. DATE 9-17-71		CITY OF RIVERSIDE, CALIFORNIA PUBLIC WORKS DEPARTMENT APPROVED BY <i>William D. Gorman</i> DIRECTOR OF PUBLIC WORKS DATE 9/17/71		ACCOUNT NO. DRAWING NUMBER S-855 SHEET 2 OF 9	
W.O. 68-258 FOR: <i>HICKS & BOYD</i> F.B.		DESIGNED BY <i>BEL</i> DRAWN BY <i>BEL</i> CHECKED BY		REVISIONS MARK DATE *AS BUILT 2-7-72 EARL		SCALE: Horiz. 1"=50' Vert. 1"=10'	
TRENTON DRIVE TRACT NO. 3825				SEWER PLAN AND PROFILE			



BENCH MARK: Elev. 1107.66 P.K. 111 and City for on conc. base of light standard in E median west side of intersection of Via Sotelo & Country Club Dr. City P.B. 864/35

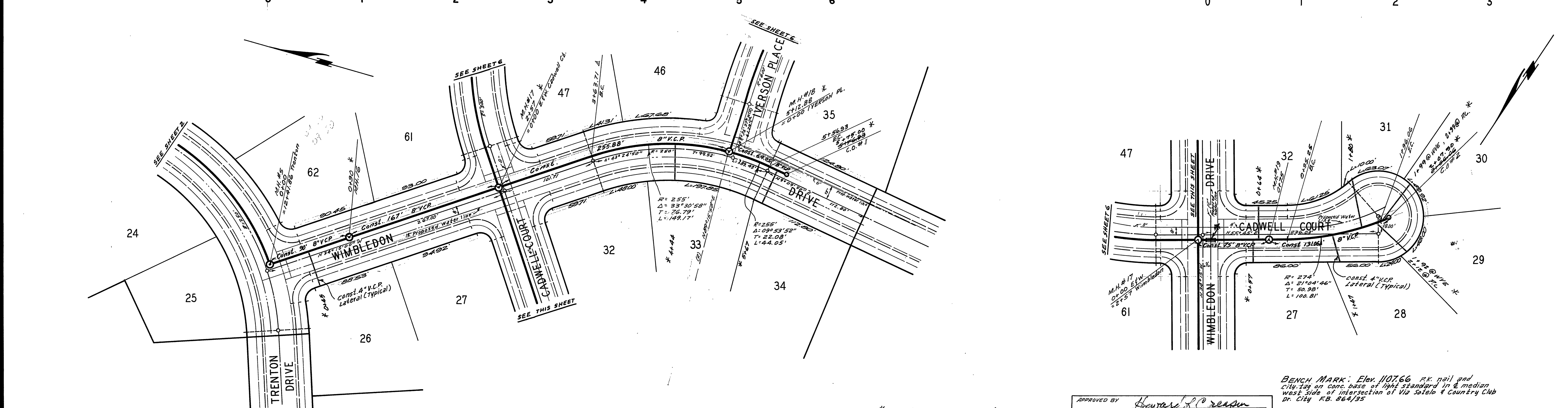
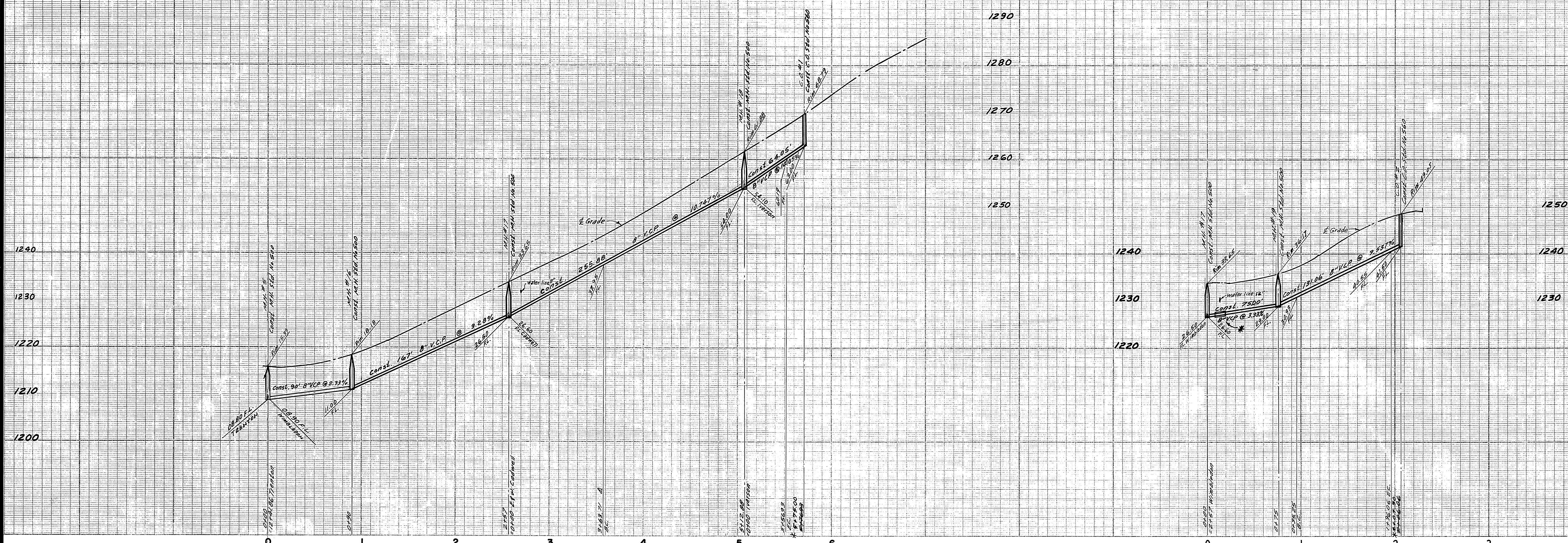
* AS BUILT 2-7-70 KREL

ALBERT A. WEBB ASSOCIATES CIVIL ENGINEERS RIVERSIDE, CALIFORNIA APPROVED BY: <i>Albert A. Webb</i> DATE 8/18/71 R.E. No. 9576	APPROVED BY: <i>Howard D. Oregon</i> DATE 9-17-71 <small>General Superintendent of Civil Engineers, Water Dept.</small>	CITY OF RIVERSIDE, CALIFORNIA PUBLIC WORKS DEPARTMENT		SEWER PLAN AND PROFILE		ACCOUNT No. DRAWING NUMBER
		APPROVED BY: <i>William D. Henderson</i> DATE 9/17/71 <small>Director of Public Works</small>		TIMBERLANE DRIVE TRACT NO. 3825		S-855 SHEET 3 OF 9
W.O. 2239 FOR: <i>Hicks & Bodman</i> F.B. 7072		DESIGNED BY: <i>BEL</i> DRAWN BY: <i>BEL</i> CHECKED BY:		SCALE: <i>Horiz. 1"=50'</i> <i>Vert. 1"=10'</i>		68-258-B



BENCH MARK: Elev. 1107.66, P.K. nail and city tag on conc. base of light standard in median west side of intersection of Via Solera Country Club Dr. City F.B. 86.4/35

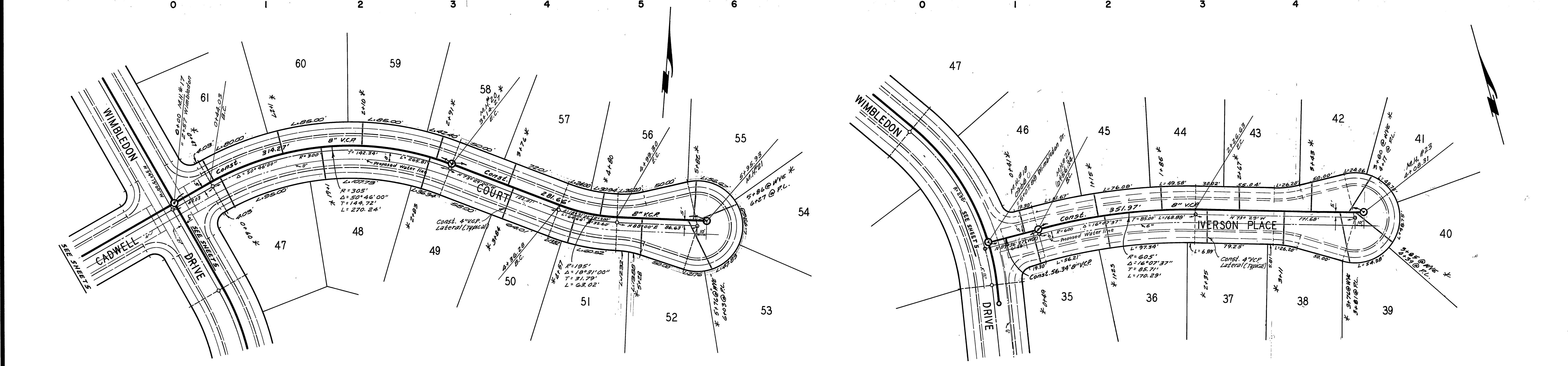
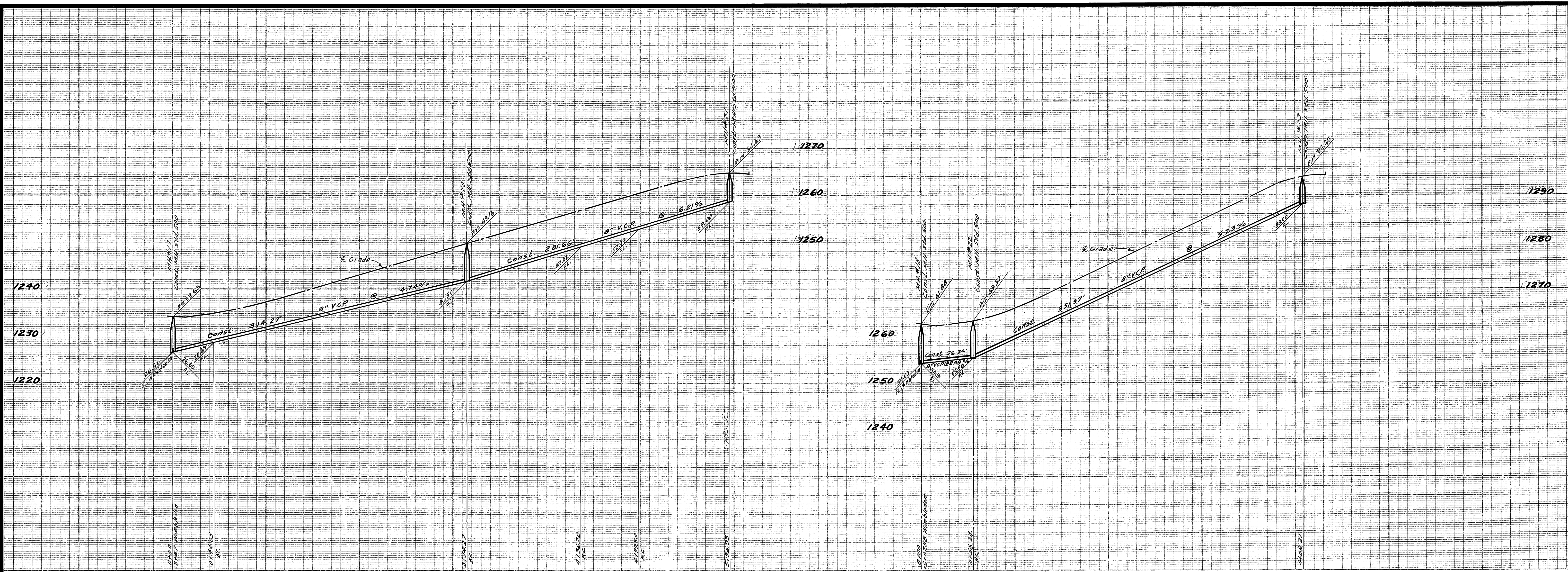
ALBERT A. WEBB ASSOCIATES CIVIL ENGINEERS RIVERSIDE, CALIFORNIA APPROVED BY: <i>[Signature]</i> DATE 9/18/71 R.E. No. 2976 W.O. 22250 FOR: <i>[illegible]</i> F.B. 76A	CITY OF RIVERSIDE, CALIFORNIA PUBLIC WORKS DEPARTMENT APPROVED BY: <i>[Signature]</i> DATE 9-17-71 PRINCIPAL ENGINEER PARK DEPARTMENT TRAFFIC DIVISION CHIEF PUB. WKS. ENGR.	SEWER PLAN AND PROFILE HALIFAX DRIVE TRACT NO. 3825 SCALE: HORIZ. 1" = 50' VERT. 1" = 10'	ACCOUNT No. DRAWING NUMBER S-855
			SHEET 4 OF 9 68-258-B



BENCH MARK: Elev. 1107.66 P.K. nail and city tag on conc. base of light standard in E median west side of intersection of Via Satala & Country Club Dr. City R.S. 864/35

*AS BUILT 2-7-72 - KARL

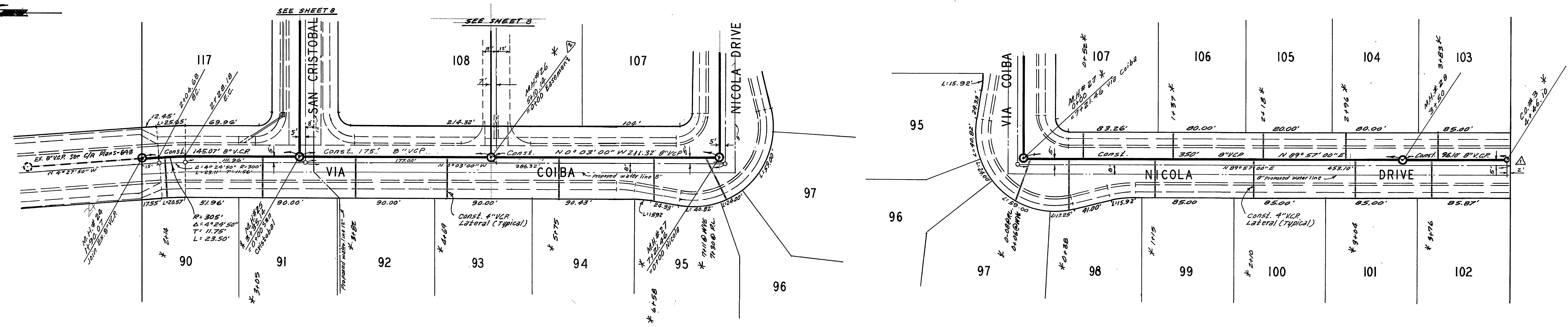
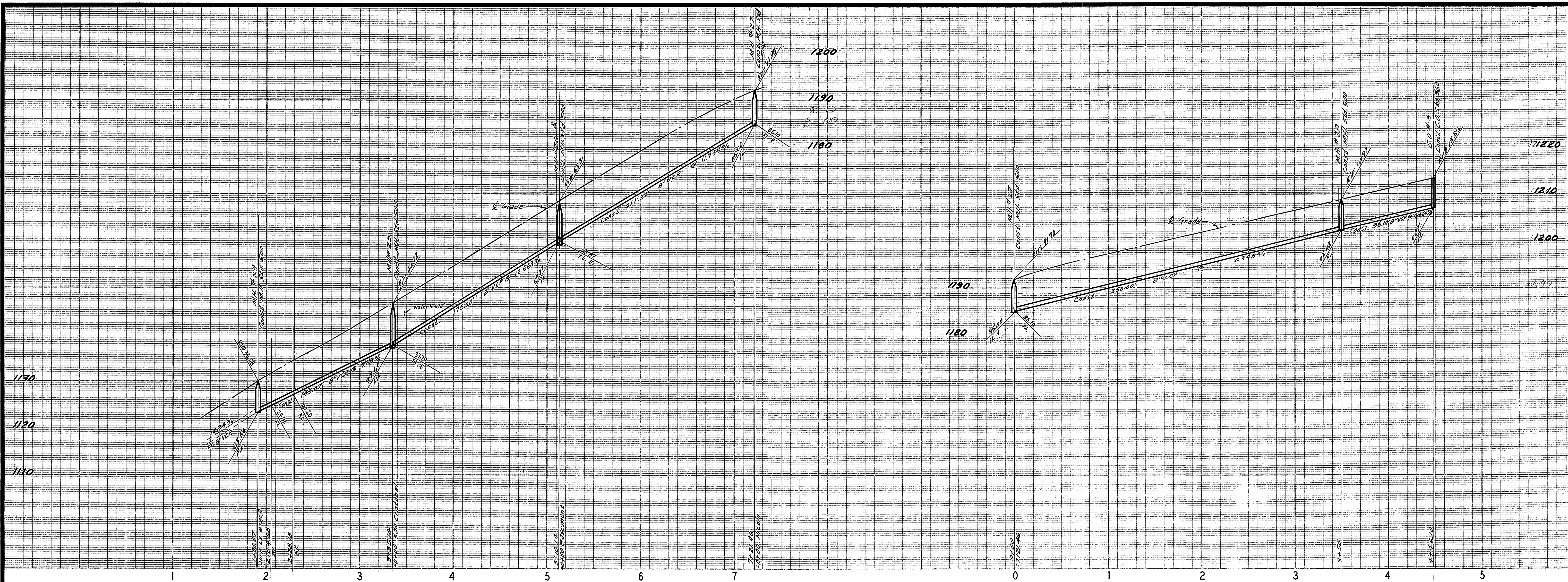
ALBERT A. WEBB ASSOCIATES CIVIL ENGINEERS RIVERSIDE, CALIFORNIA APPROVED BY: <i>Paul N. Webb</i> DATE: 8/18/71 R.E. No. 2376	CITY OF RIVERSIDE, CALIFORNIA PUBLIC WORKS DEPARTMENT APPROVED BY: <i>William D. Hadden</i> DATE: 9/17/71 PRINCIPAL ENGINEER PARK DEPARTMENT TRAFFIC DIVISION CHIEF PUB. WKS. ENGR.	APPROVED BY: <i>William D. Hadden</i> DATE: 9-17-71 GENERAL SUPERINTENDENT (PERMIT ENGINEER, WATER DEPT.)	ACCOUNT NO. DRAWING NUMBER S-855 SHEET 5 OF 9 68-258-B
		WIMBLEDON DRIVE CADWELL COURT TRACT NO. 3825	SCALE: Horiz. 1"=50' Vert. 1"=10'



BENCH MARK: Elev. 1107.66, P.K. nail end city 189 on conc. base of light standard in median west side of intersection of Via Satalo & Country Club Dr. City R.S. 264/35

*AS BUILT 2-7-76 KARL

ALBERT A. WEBB ASSOCIATES CIVIL ENGINEERS RIVERSIDE, CALIFORNIA APPROVED BY <u>P. N. Wall</u> DATE <u>1/18/71</u> R.E. No. <u>2876</u>	CITY OF RIVERSIDE, CALIFORNIA PUBLIC WORKS DEPARTMENT APPROVED BY <u>Howard D. Orsman</u> DATE <u>7-17-71</u> GENERAL SUPERINTENDENT OF CITY ENGINEER, WATER DEPT. PRINCIPAL ENGINEER PARK DEPARTMENT TRAFFIC DIVISION CHIEF PUB. WKS. ENGR.	SEWER PLAN AND PROFILE CADWELL COURT IVERSON PLACE TRACT NO. 3825	ACCOUNT No. DRAWING NUMBER S-855
			SHEET <u>6</u> OF <u>9</u> SCALE: HORIZ. 1"=50' VERT. 1"=10' 68-258-B



BENCH MARK: Elev. 110766 P.K. rail and city tag on conc. base of light standard in a median west side of intersection of Via Sotelo & country club dr. City P.B. 06/95

* AS BUILT 2-7-72 KREL

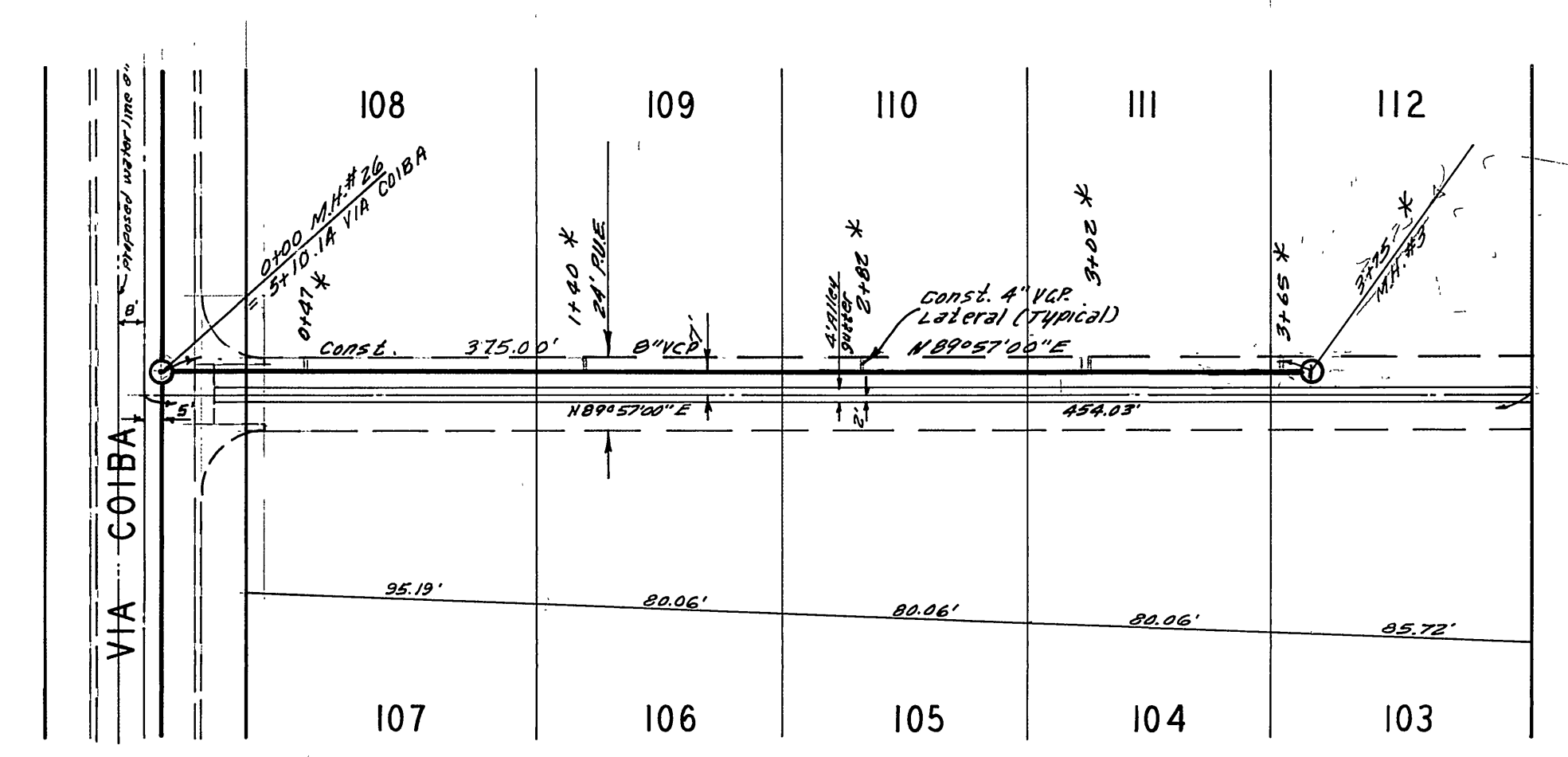
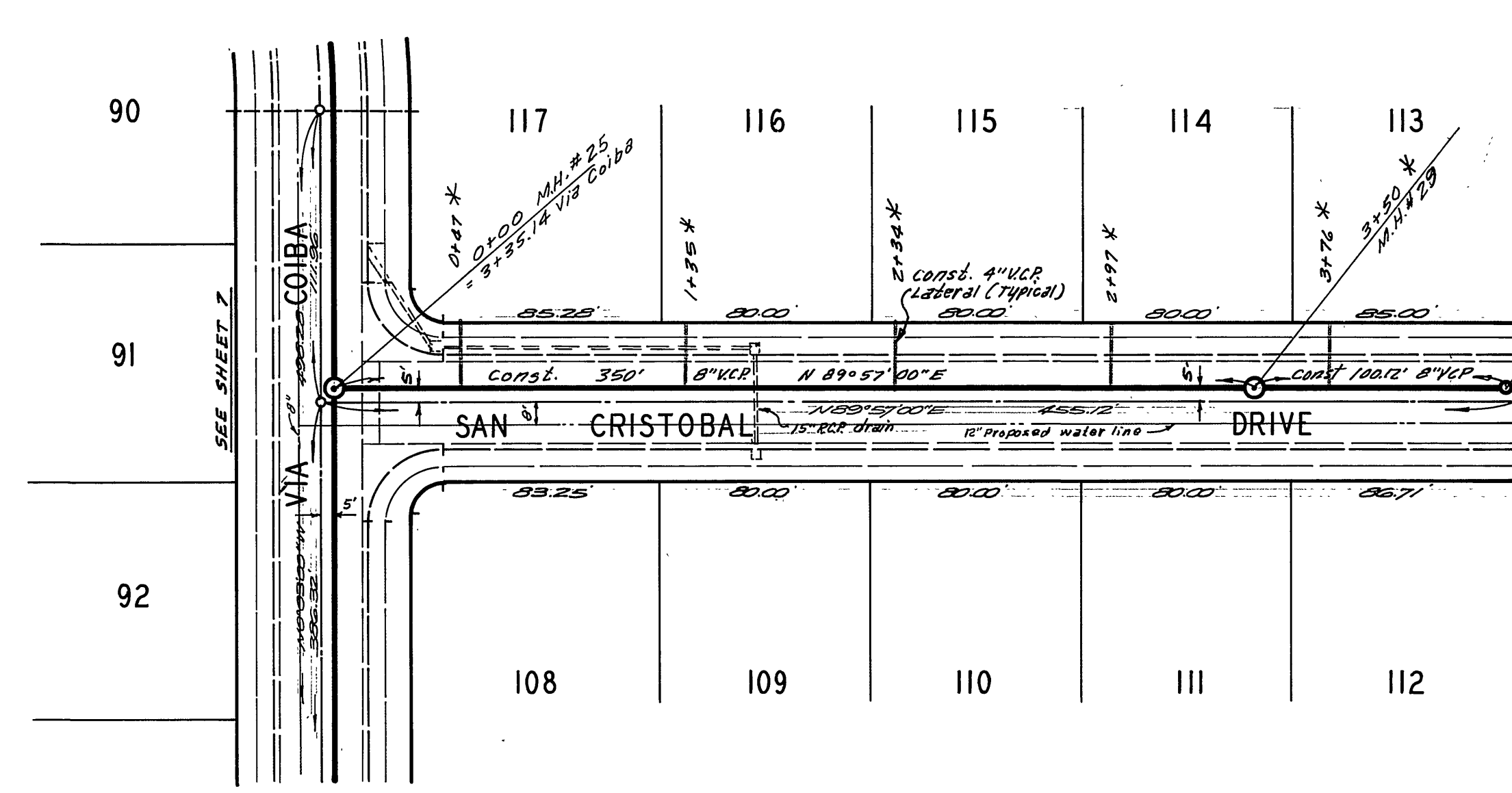
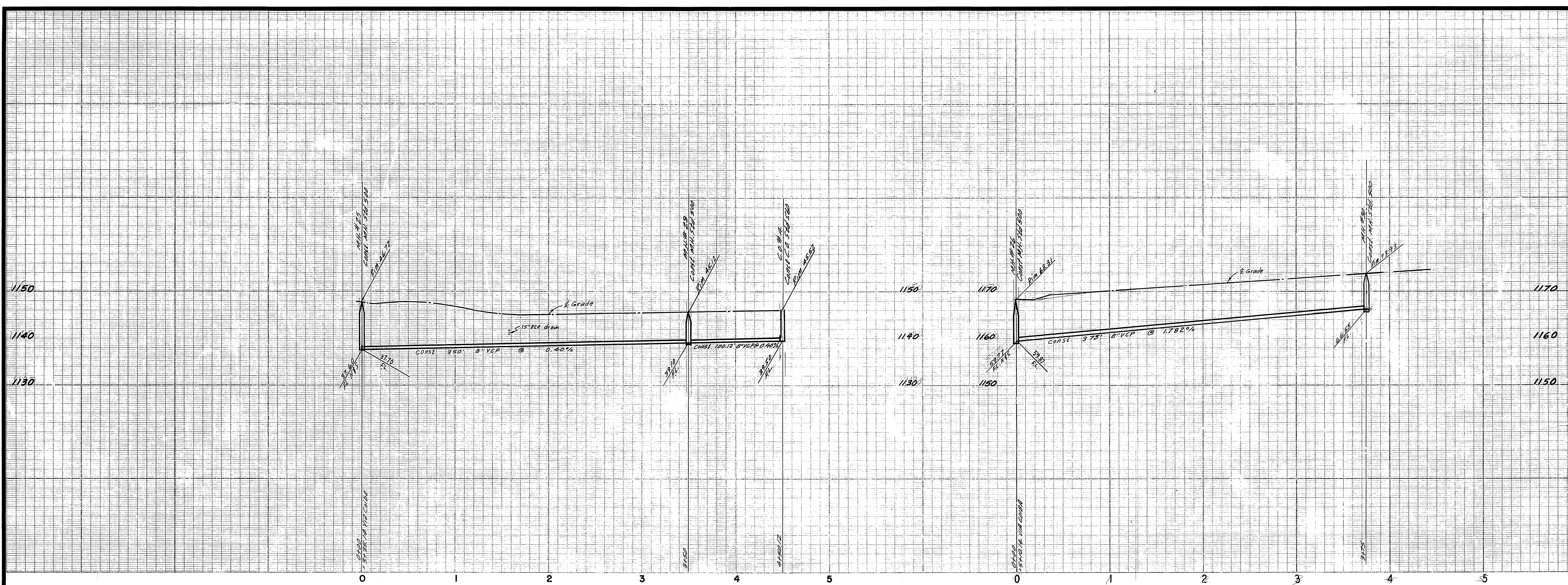
ALBERT A. WEBB ASSOCIATES
 CIVIL ENGINEERS
 RIVERSIDE, CALIFORNIA
 APPROVED BY: *[Signature]* DATE: 8/18/71
 R.E. No. 9876

DESIGNED BY: BEL
 DRAWN BY: BEL
 CHECKED BY: []

APPROVED BY: *[Signature]*
 DATE: 9-17-71
 CITY OF RIVERSIDE, CALIFORNIA
 PUBLIC WORKS DEPARTMENT
 APPROVED BY: *[Signature]*
 DATE: 9/17/71

SEWER PLAN AND PROFILE
 VIA COIBA
 NICOLA DRIVE
 TRACT NO. 3825
 SCALE: Horiz. 1" = 50' Vert. 1" = 10'

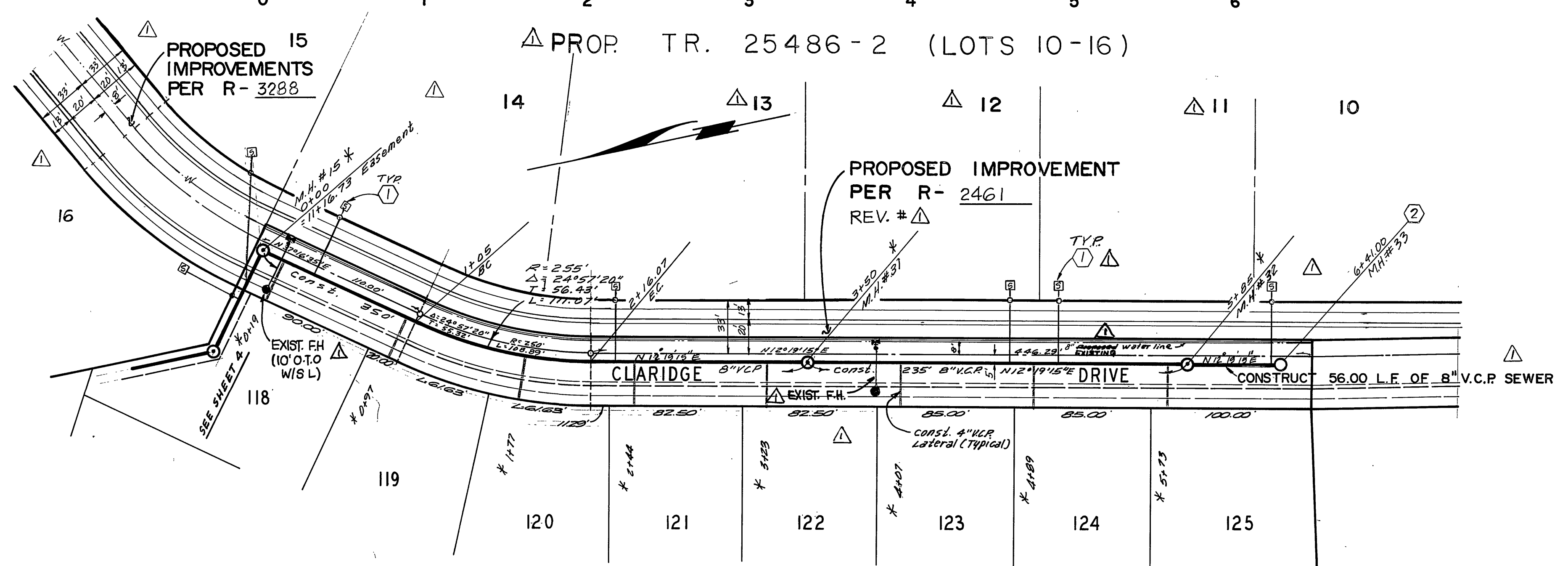
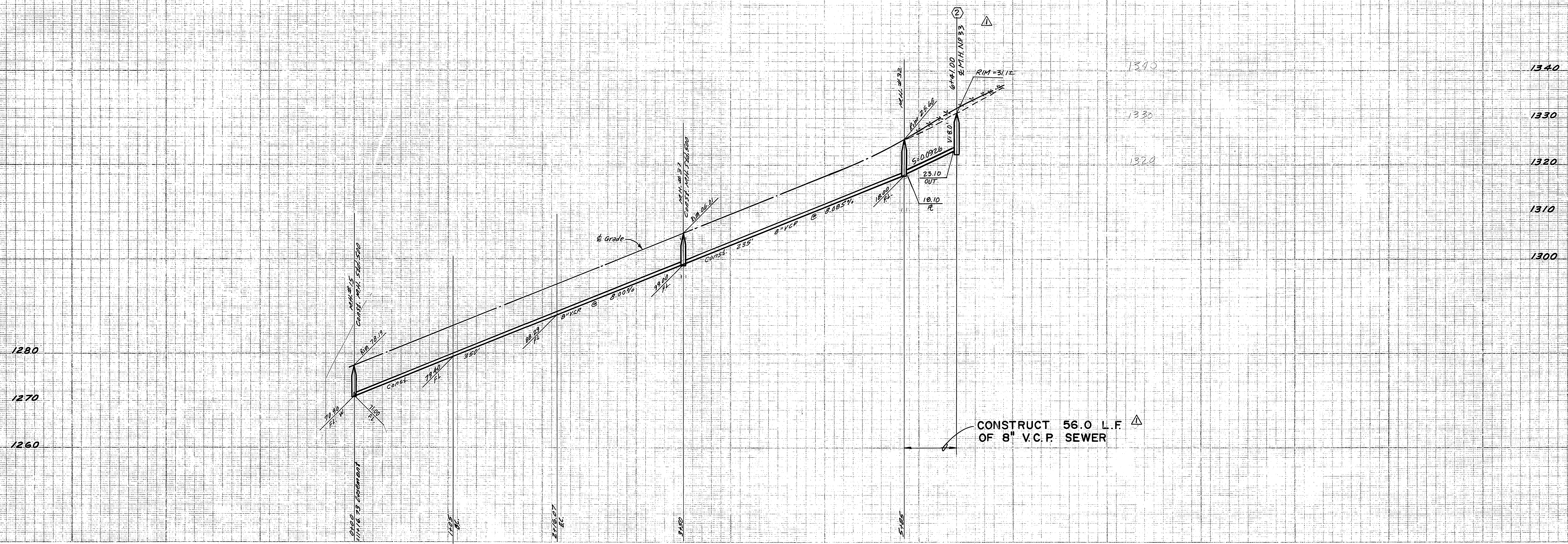
ACCOUNT NO.
 DRAWING NUMBER
S-855
 SHEET 7 OF 9
 68-258-B



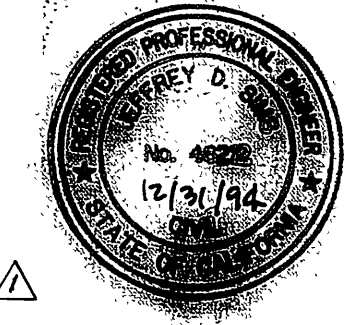
BENCH MARK: Elev. 1107.66 P.M. nail and city lay on conc. base of light standard in median west side of intersection of Via Sotelo & Country Club Dr. City F.B. 264/35

* AS BUILT 2-7-71 KAL

ALBERT A. WEBB ASSOCIATES CIVIL ENGINEERS RIVERSIDE, CALIFORNIA APPROVED BY: <i>Paul W. Wall</i> DATE: 8/18/71 R.E. No. 9876	APPROVED BY: <i>Howard R. Orsman</i> DATE: 9-17-71 <small>General Superintendent of Civil Engineering, Water Dept.</small>	CITY OF RIVERSIDE, CALIFORNIA PUBLIC WORKS DEPARTMENT		SEWER PLAN AND PROFILE SAN CRISTOBAL TRACT NO. 3825		ACCOUNT No. DRAWING NUMBER S-855
		APPROVED BY: <i>William D. Jordan</i> DATE: 9/17/71 <small>Director of Public Works</small>	SCALE: Horiz. 1"=50' Vert. 1"=10'	SHEET 8 OF 9 68-258-B		



- CONSTRUCTION NOTES:**
- ① CONSTRUCT 4" SEWER LATERALS PER CITY OF RIVERSIDE STD. NO. 562 WITH C.O. @ R PER STD. NO. 560
 - ② CONSTRUCT SEWER M.H. PER CITY STD. 500.



FOR ① ONLY (REVISIONS FOR T. 25486-2)

* AS BUILT 2-7-76 KARL

APPROVED BY: *Howard J. Orman*
 DATE: 9-17-71
General Superintendent, Chief Engineer, Water Dept.

BENCH MARK: ELEV. 1107.66 P.V. nail and City tag on conc. base of light standard in E median west side of intersection of Via Solano & Country Club Dr. City R.B. 064/35

CITY OF RIVERSIDE WATER DEPARTMENT APPROVED BY: <i>Richard J. Durbak</i> 7-31-92 DATE:	J.F.D. J.E. DAVIDSON ASSOCIATES, INC. 3880 LEMON ST. SUITE 300 RIVERSIDE, CA. 92502 (714) 684-0844 PREPARED UNDER THE SUPERVISION OF: <i>[Signature]</i> 9/15/92 DATE:	ALBERT A. WEBB ASSOCIATES CIVIL ENGINEERS RIVERSIDE, CALIFORNIA APPROVED BY: <i>[Signature]</i> DATE: 8/18/71 R.E. No. 2876	ADD SEWER FOR LOT 10-16 TR 25486-2 REVISIONS:	CITY OF RIVERSIDE, CALIFORNIA PUBLIC WORKS DEPARTMENT APPROVED BY: <i>William B. Hardum</i> DATE: 9/17/71 <small>Director of Public Works</small>		SEWER PLAN AND PROFILE CLARIDGE DRIVE TRACT NO. 3825 SCALE: HORIZ. 1"=50' VERT. 1"=10'	ACCOUNT No. DRAWING NUMBER S-855 SHEET 9 OF 9 68-258-B
				DESIGNED BY: <i>BEI</i> DRAWN BY: <i>BEI</i> CHECKED BY:	DATE:		