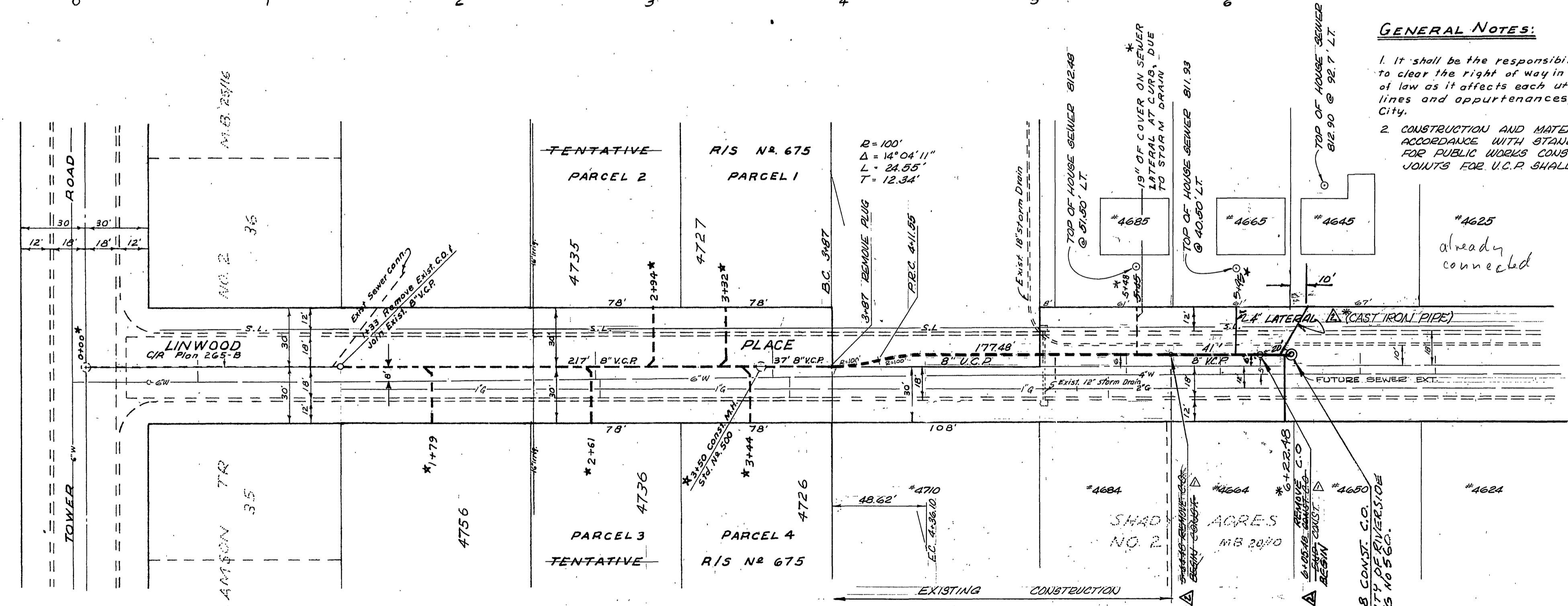
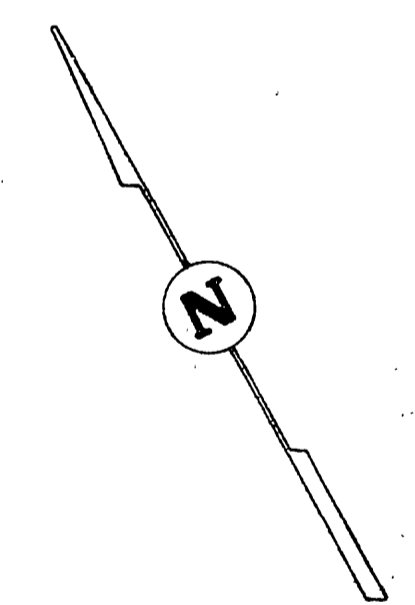


NOTE: Elev. for FL of sewer were taken from Riv. City Plan No. 265-B with 0.4% added due to difference in S.M. datum.

SCALE: HOR. 1"=40'  
 VERT. 1"=4'

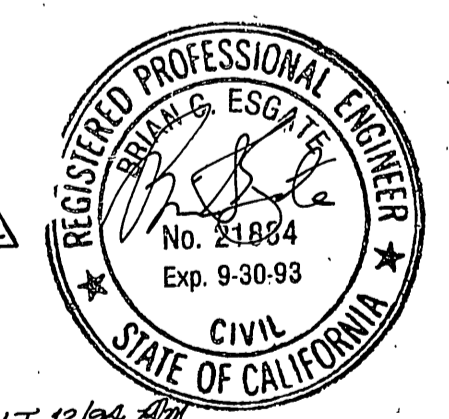


**GENERAL NOTES:**

1. It shall be the responsibility of the contractor to clear the right of way in accordance with provisions of law as it affects each utility including irrigation, lines and appurtenances and at no cost to the City.
2. CONSTRUCTION AND MATERIALS SHALL BE IN ACCORDANCE WITH STANDARD SPECIFICATIONS FOR PUBLIC WORKS CONSTRUCTION, 1973 EDITION. JOINTS FOR U.C.R. SHALL BE TYPE "F" OR "G" ONLY.
3. EXPOSE STORM DRAIN BEFORE LAYING 4" LATERAL. LAY LATERAL FOR HOUSE # 1595 AT ABOUT 2.4% BETWEEN STORM DRAIN AND HOUSE SEWER.

**BENCH MARK:** ELEV. 811.54

Spk. in lead mid point of curb return, S.E. corner Oakwood Pl. and Tower Rd. C.R.F.B. 772/56



ESGATE ENGINEERING  
 608 CUTWOOD LANE, RIVERSIDE  
 CIVIL ENGINEERS  
 APPROVED: [Signature] DATE: 5/16/74

MARK	DATE	DESCRIPTION
Δ	9/2/70	ADDED SEWER TO #4645 APPROVAL W.L.E. 1/2/71
Δ	8/17/74	ADDED 7" SEWER TO #4665 APPROVAL W.L.E. 1/2/74

CITY OF RIVERSIDE, CALIFORNIA DEPARTMENT OF PUBLIC WORKS	
SEWER PLAN & PROFILE LINWOOD PL. SEWER EXT. 450' SE. OF TOWER RD.	
APPROVED BY	NO. S-856
DIRECTOR OF PUBLIC WORKS	SHEET 1 OF 1

These houses are connected to the sewer located in an easement (Sewer Book 3/26 and plan S-273) News, Sept 74