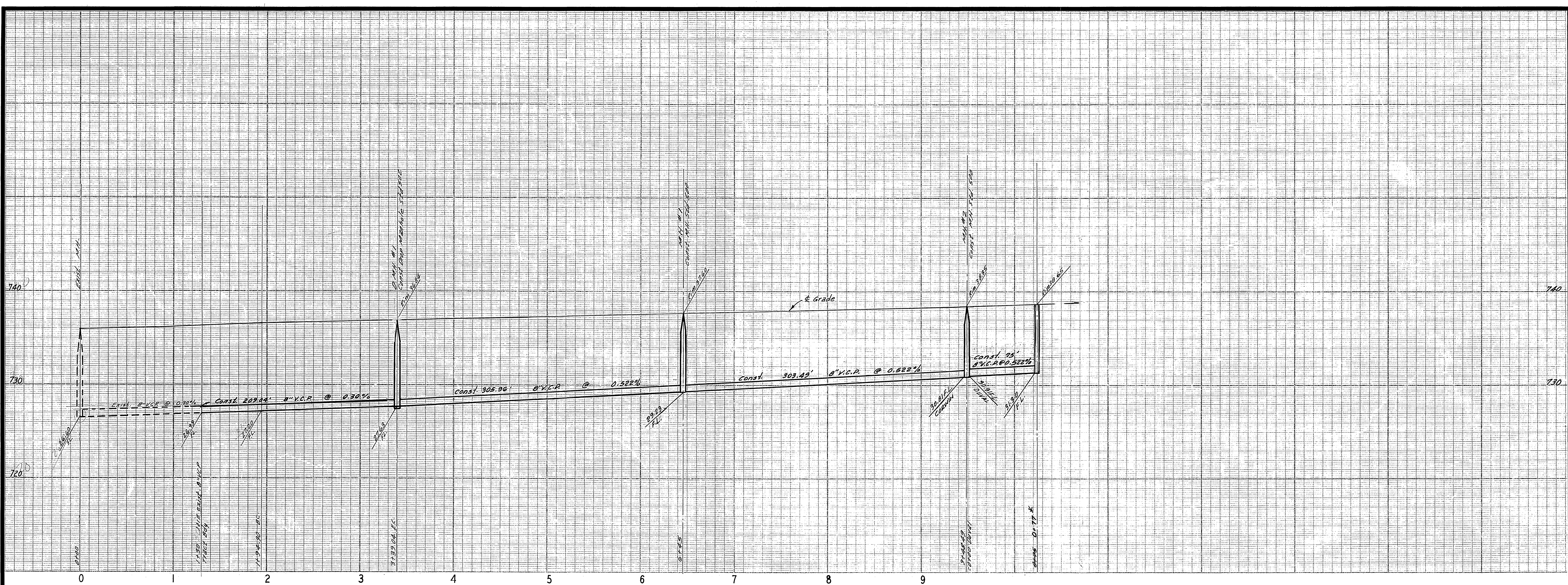


- GENERAL NOTES
- Construction shall be in accordance with the City of Riverside, Department of Public Works, Standard Specifications No. 461 and Standard Drawings.
 - It shall be the responsibility of the contractor to clear the right of way in accordance with the provisions of the law as it affects each utility, including irrigation lines and appurtenances and at no cost to the City.
 - Joints shall be in conformance to ASTM Specifications, C-425-64, Type 1 or 2 or to ASTM Specifications C-594-66 T (Band Seal) with certain exceptions or modifications on file with the City Engineer. (Band seal not to be used in Curved Sewers)
 - Pipe shall be bedded per Case 1, Standard Drawing No. 452, unless otherwise specified on plan.
 - Location of wyes and laterals to be determined at the direction of the owner.
 - All stubs and laterals to be constructed in accordance with Standard Drawing No. 562. Stubs shall be plugged and capped, all wyes to be laid flat.
 - Manhole frames and covers to be set to proposed pavement grades.
 - Laterals are to be 4" and extended to property line.
 - Prior to construction of sewer, Contractor is to expose existing sewer and contact Engineer for verification of existing elevations.
 - The quantity estimate shown hereon is for information only and the City assumes no responsibility for its accuracy.

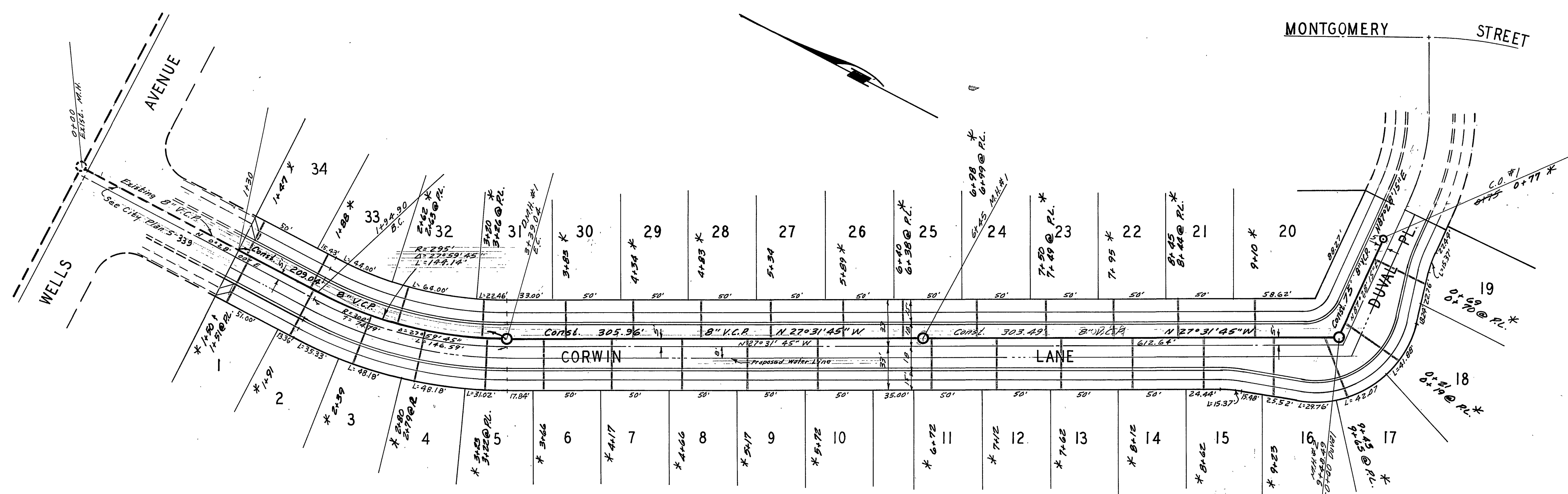
QUANTITY ESTIMATE

Manhole Standard No. 500	5	Ea.
Drop Manhole Standard No. 502		Ea.
Clearout Standard No. 560	1	Ea.
8" Vitrifed Clay Pipe	1,257	L.F.
4" Vitrifed Clay Pipe	1,783	L.F.
4" X 8" Wyes	51	Ea.

ALBERT A. WEBB ASSOCIATES CIVIL ENGINEERS RIVERSIDE, CALIFORNIA APPROVED BY: <i>Albert A. Webb</i> DATE: 12/24/70 R.E. No. 9876	MARK REVISIONS APPR. DATE	Approved By: _____ General Superintendent of Civil Engineer - Water Dept. Date: _____	CITY OF RIVERSIDE, CALIFORNIA DEPARTMENT OF PUBLIC WORKS		PROJECT NO. S-859
		W.O. 70-240 FOR WOODHAVEN DEK DESIGNED BY: _____ DRAWN BY: <i>BB</i> CHECKED BY: <i>BB</i>	PARK DEPARTMENT TRAFFIC DIVISION ASSISTANT CITY ENG.	APPROVED BY: _____ DIRECTOR OF PUBLIC WORKS DATE: _____	SEWER PLAN AND PROFILE INDEX SHEET TRACT NO. 4149 SCALE: AS SHOWN



- BENCH MARK**
- ELEV. 737.820, 3/4" ON S/W CURB RETURN SEQUOIA ST. & CALIF. AVE., CITY F.S. 550/55.
 - ELEV. 752.297, CHISEL "X" ON THE CONC. H.W. MOST ELY. END SOUTH SIDE CHALLENGE AVE. STA. 29+60.1.



Approved by *Howard J. ...*
 Council Superintendent of Public Works
 Date 6-29-71

* AS BUILT 8/1/72 KML

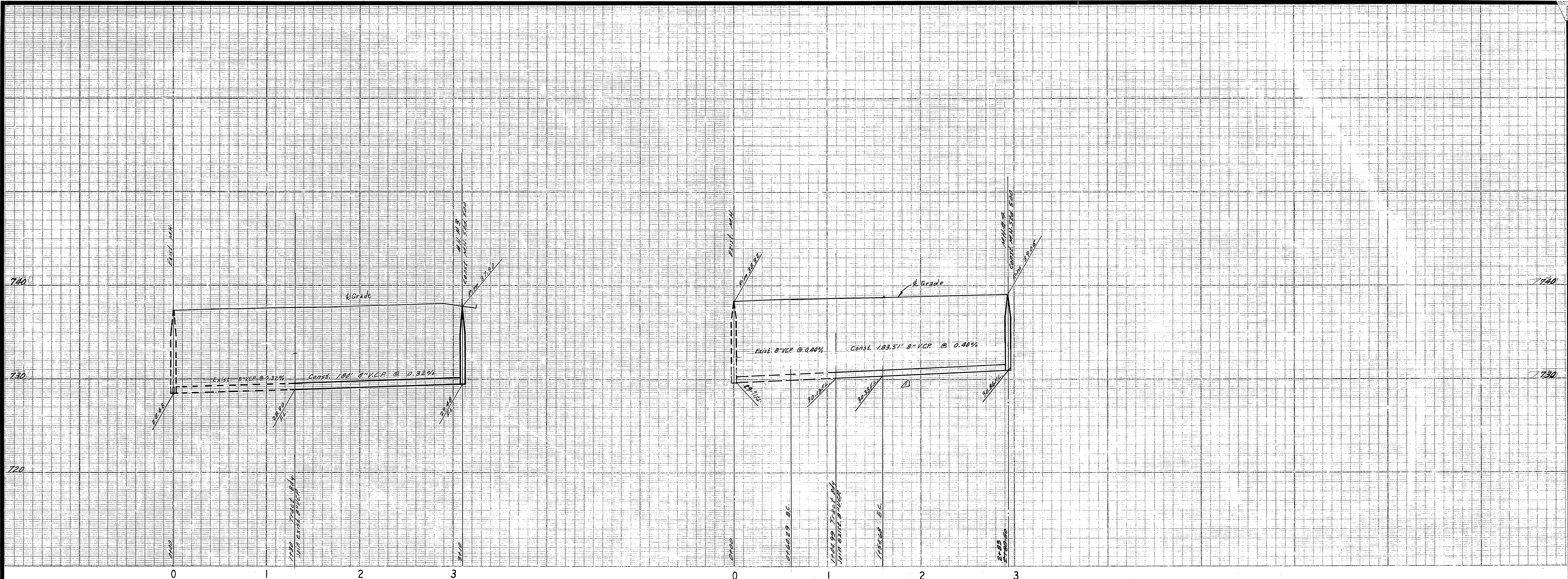
ALBERT A. WEBB ASSOCIATES
 CIVIL ENGINEERS
 RIVERSIDE, CALIFORNIA
 APPROVED BY *Emmet N. Webb* DATE 12/21/70
 R.E. No. 9876

MARK	REVISIONS	APPR.	DATE

CITY OF RIVERSIDE, CALIFORNIA
 PUBLIC WORKS DEPARTMENT
 APPROVED BY *C.W.D.* DATE 7/9
 PRINCIPAL ENGINEER
 PARK DEPARTMENT
 TRAFFIC DIVISION
 CHIEF PUB. WKS. ENGR.
 DATE 11-18-71

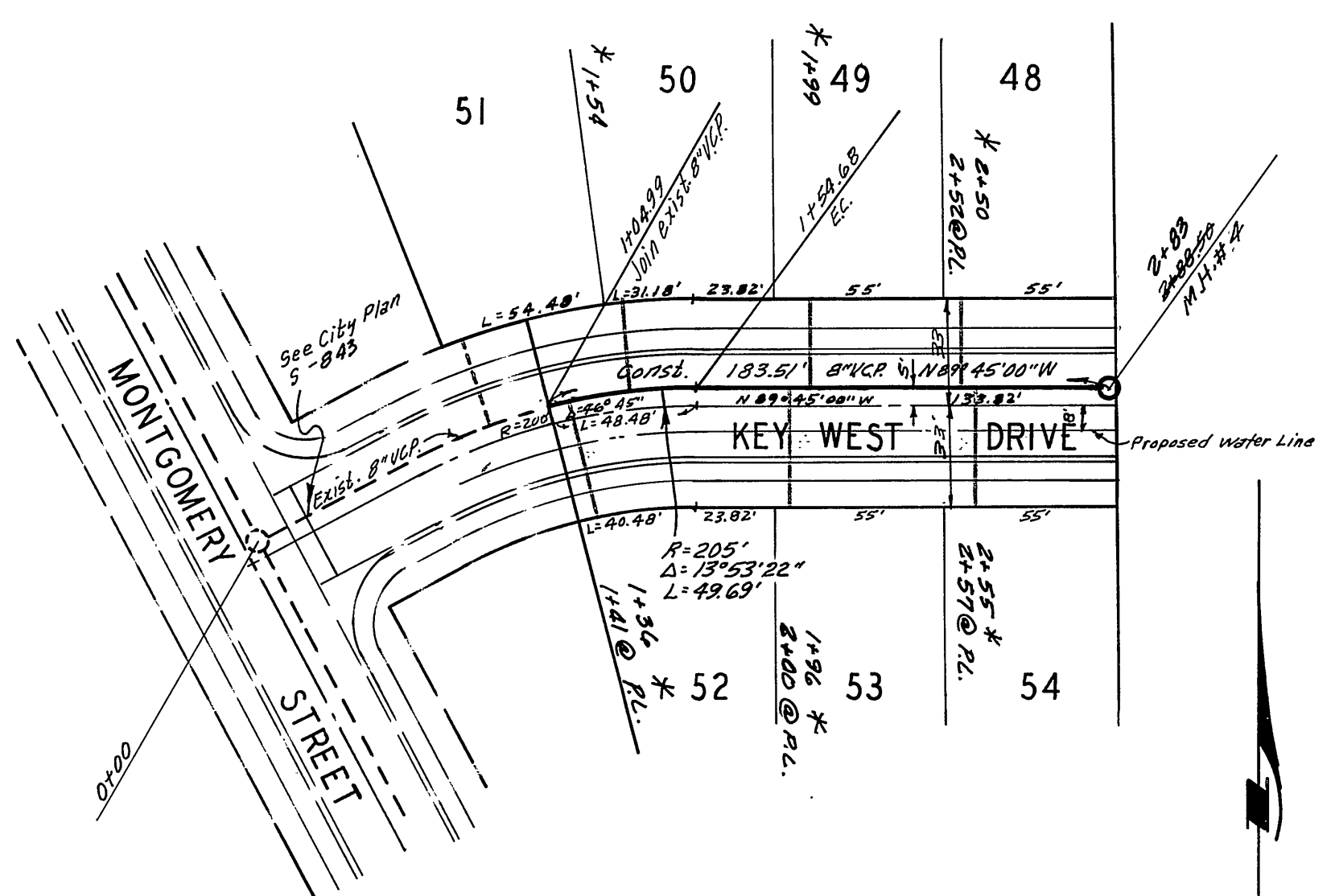
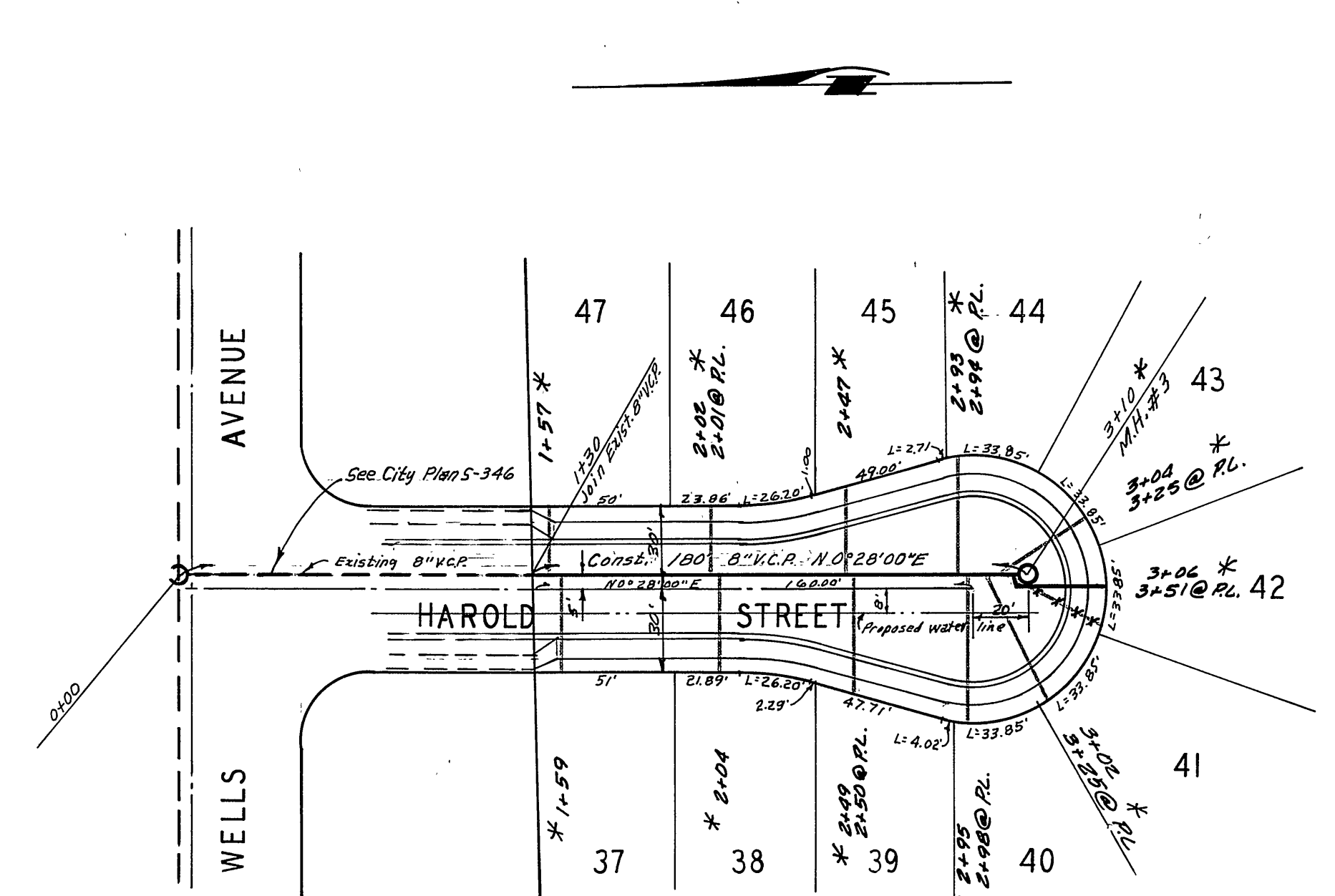
SEWER PLAN AND PROFILE
 CORWIN LANE
 TRACT NO. 4149
 SCALE 1" = 50'

ACCOUNT No.
 DRAWING NUMBER
S-859
 SHEET 2 OF 3
 70-240-B



BENCH MARK

- ELEV. 757.850, S/L ON S/W CURB RETURN SEQUOIA ST. & CALIF. AVE., CITY FB. 550/55.
- ELEV. 752.297, CHISEL "X" ON THE CONC. L.W. MOST ELY END SOUTH SIDE CHALLENGE AVE. STA. 29+60.1.



ALBERT A. WEBB ASSOCIATES CIVIL ENGINEERS RIVERSIDE, CALIFORNIA APPROVED BY: <i>Robert H. Webb</i> DATE: 12/21/78 R.E. No. 9876 W.O. 70-240 FOR: Woodhaven Dev.		CITY OF RIVERSIDE, CALIFORNIA PUBLIC WORKS DEPARTMENT APPROVED BY: <i>Howard D. Oresman</i> General Superintendent of Civil Engineer - Water Dept. Date: 6-29-71		SEWER PLAN AND PROFILE KEY WEST DRIVE HAROLD STREET TRACT NO. 4149 SCALE: 1" = 50'		ACCOUNT No. DRAWING NUMBER S-859 SHEET 3 OF 3 70-240-B	
DESIGNED BY: <i>DEC</i> DRAWN BY: <i>BEL</i> CHECKED BY: <i>DEC</i>		REVISIONS MARK DATE		APPROVED BY: <i>Howard D. Oresman</i> DIRECTOR OF PUBLIC WORKS DATE: 11-18-71		* AS BUILT 8/1/76 <i>KRL</i>	