

REVISIONS		
MARK	DATE	DESCRIPTION

CITY OF RIVERSIDE CALIFORNIA
DEPARTMENT OF PUBLIC WORKS

JEFFERSON ST.
AND
ORCHARD ST.
SANITARY SEWER
DISTRICT

MAPS SHOWING THE LANDS INCLUDED WITHIN THE ASSESSMENT DISTRICT TO BE BENEFITED BY THE CONSTRUCTION OF SANITARY SEWER

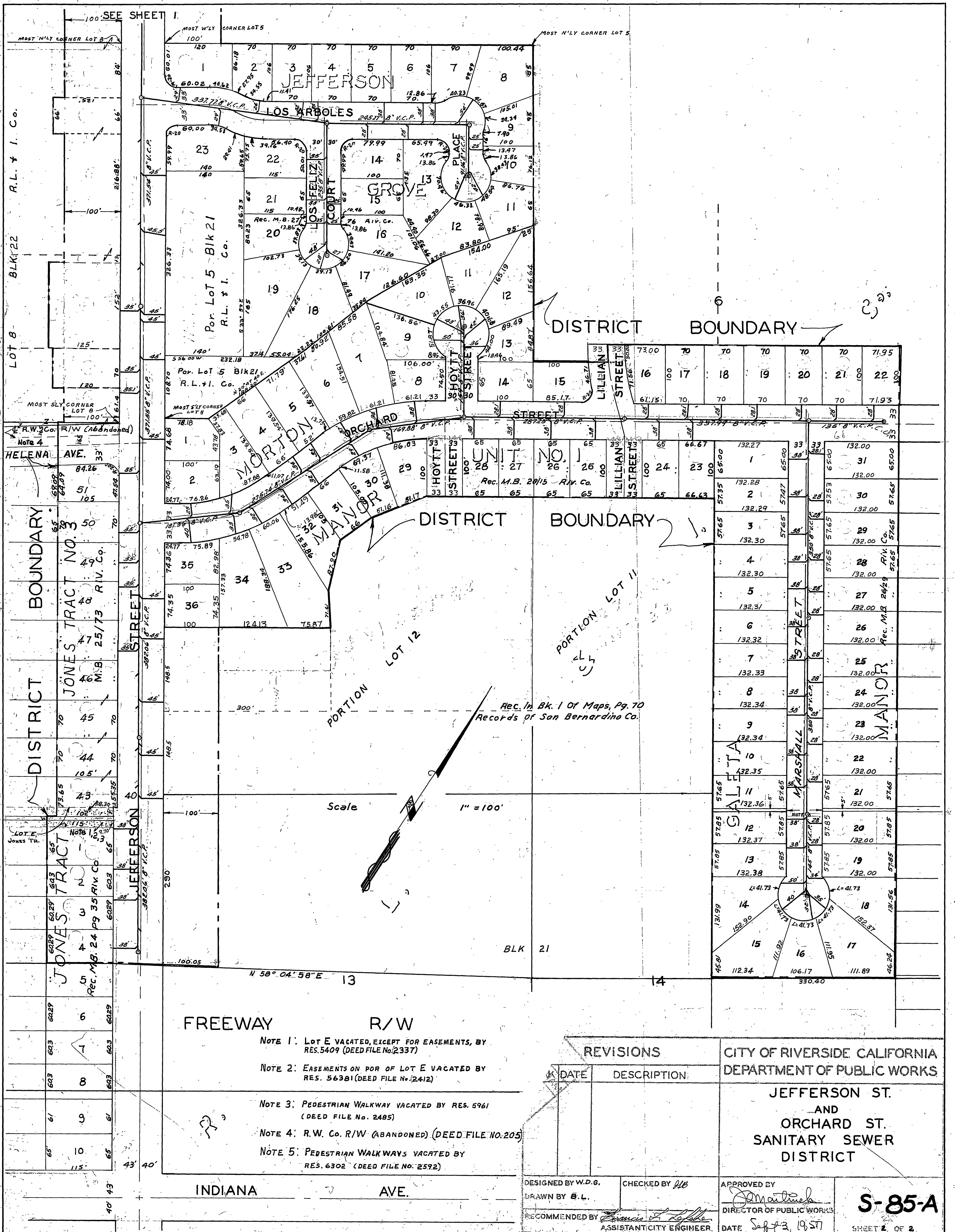
DESIGNED BY W. D. G.
DRAWN BY B. L.

RECOMMENDED BY *James F. ...*
ASSISTANT CITY ENGINEER

APPROVED BY *[Signature]*
DIRECTOR OF PUBLIC WORKS

DATE *SEP 3, 1927*

S-85-A
SHEET 1 OF 2



- NOTE 1: Lot E vacated, except for easements, by RES. 5409 (DEED FILE NO. 2337)
- NOTE 2: EASEMENTS ON POR OF LOT E VACATED BY RES. 56381 (DEED FILE NO. 2412)
- NOTE 3: PEDESTRIAN WALKWAY VACATED BY RES. 5961 (DEED FILE NO. 2485)
- NOTE 4: R.W. Co. R/W (ABANDONED) (DEED FILE NO. 205)
- NOTE 5: PEDESTRIAN WALKWAYS VACATED BY RES. 6302 (DEED FILE NO. 2592)

REVISIONS		CITY OF RIVERSIDE CALIFORNIA DEPARTMENT OF PUBLIC WORKS
DATE	DESCRIPTION	
		JEFFERSON ST. AND ORCHARD ST. SANITARY SEWER DISTRICT

DESIGNED BY W.D.G.
DRAWN BY B.L.
RECOMMENDED BY *Francis L. Laffin*
ASSISTANT CITY ENGINEER

CHECKED BY *R.B.*
APPROVED BY *W. Martinez*
DIRECTOR OF PUBLIC WORKS

DATE *Sept 2, 1957*

S-85-A
SHEET 2 OF 2