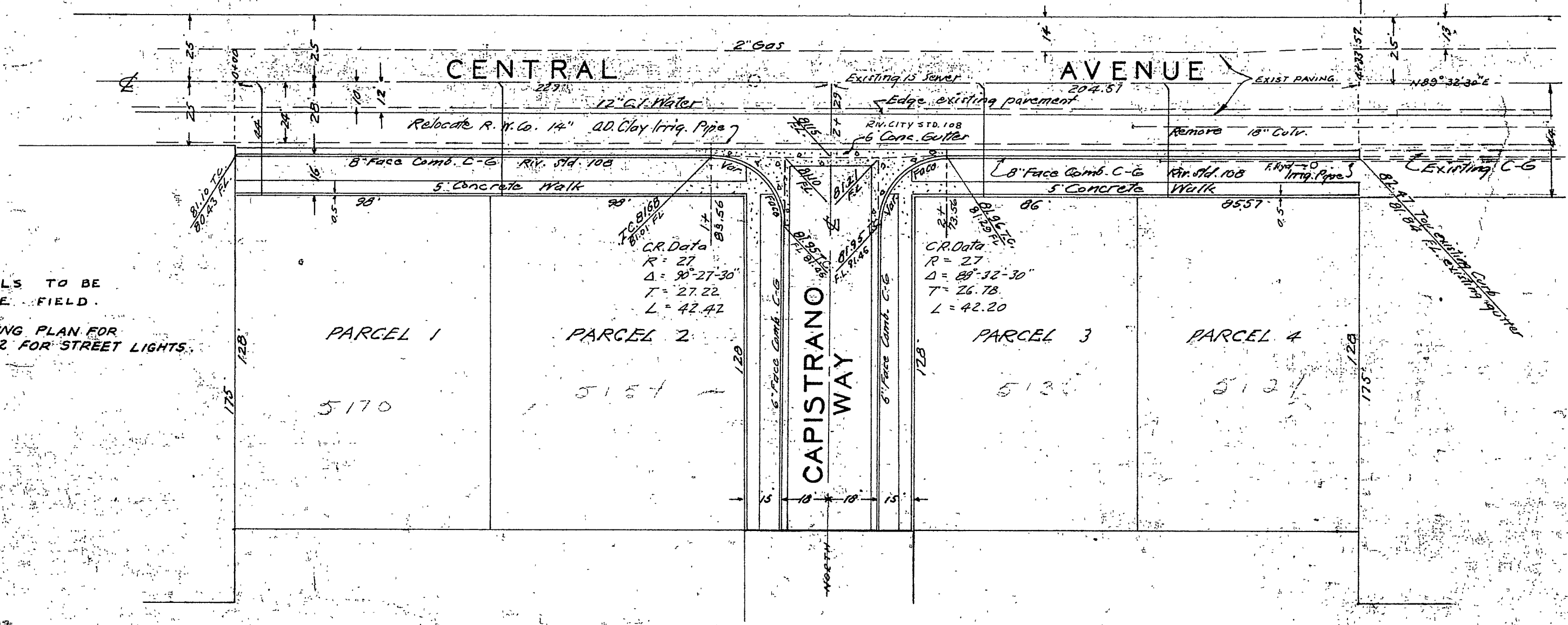
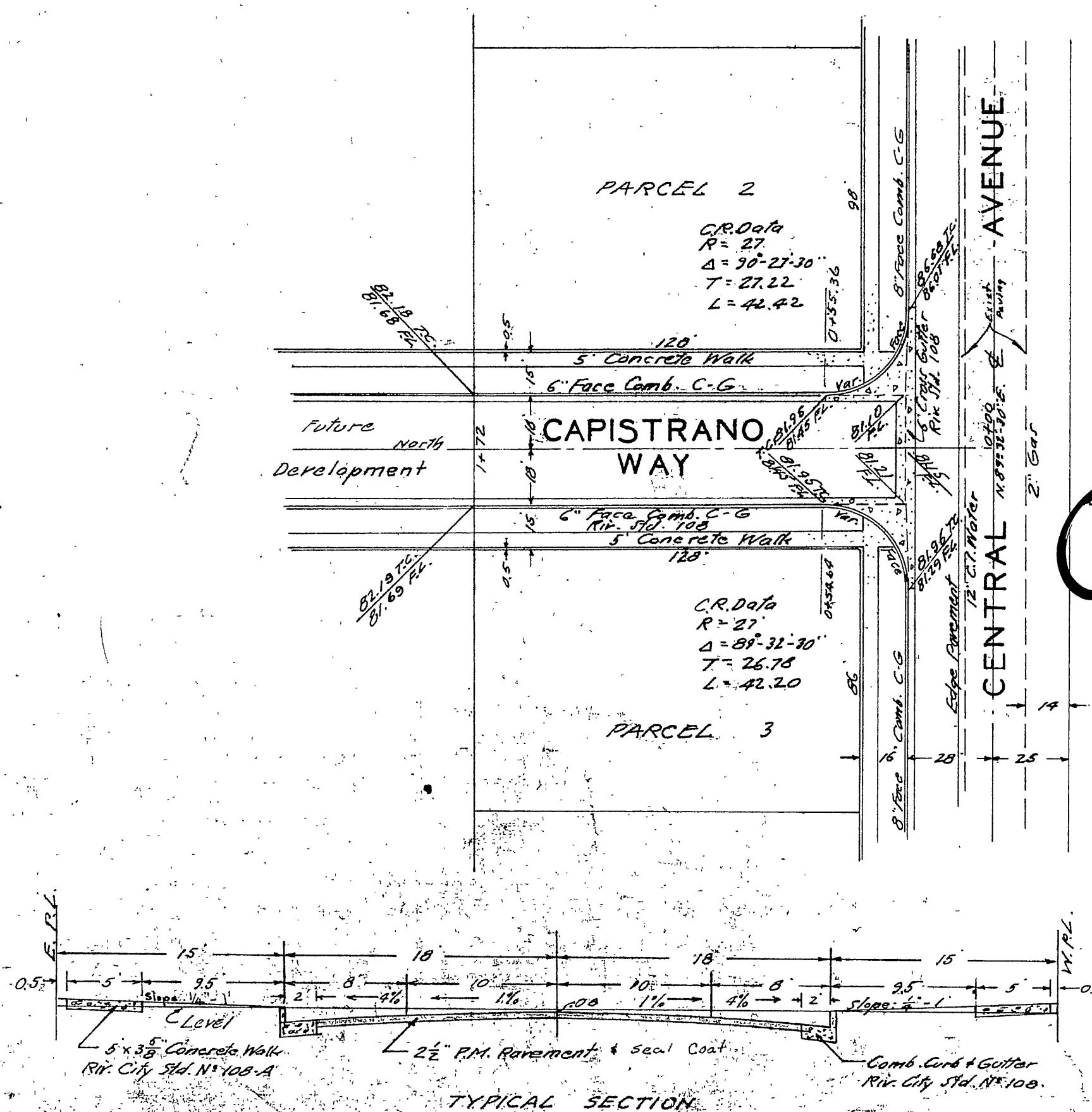


EQUATION: $388887 \text{ CIRCULAR NO. 1903-A}$
 SHEET 4 OF 6



NOTE:
 SEWER LATERALS TO BE LOCATED IN THE FIELD.
 SEE STREET LIGHTING PLAN FOR MONTCLAIR PARK NO. 2 FOR STREET LIGHTS.

PROPERTY OF
 CITY OF RIVERSIDE
 PUBLIC WORKS
 ENGINEERING DIVISION



TYPICAL SECTION
 CAPISTRANO WAY
 Hor. 1" = 40'
 Vert. 1" = 4'

ORIGINAL FILED
 W/R PLANS

R/S - 26/54

M. Christel on curb
 W. Side Capistrano Way
 Front of No. N. 6735
 Elev. = 791.92

J.F. DAVIDSON - CIVIL ENGINEER
 R.E. No. 862
 RIVERSIDE, CALIFORNIA
 APPROVED BY *[Signature]* DATE 5-15-57

CITY OF RIVERSIDE, CALIFORNIA
 DEPARTMENT OF PUBLIC WORKS

STREET PLAN & PROFILE
 CENTRAL AVE-CAPISTRANO WAY
 M.B. 26 PG. 54

RECORD OF SURVEY
 HORIZ. SCALE 1" = 40' VERT. SCALE 1" = 4'

APPROVED BY *[Signature]*
 Director of Public Works
 DATE May 20, 1957

NO R/25 (3-56)

INDEXED 1957