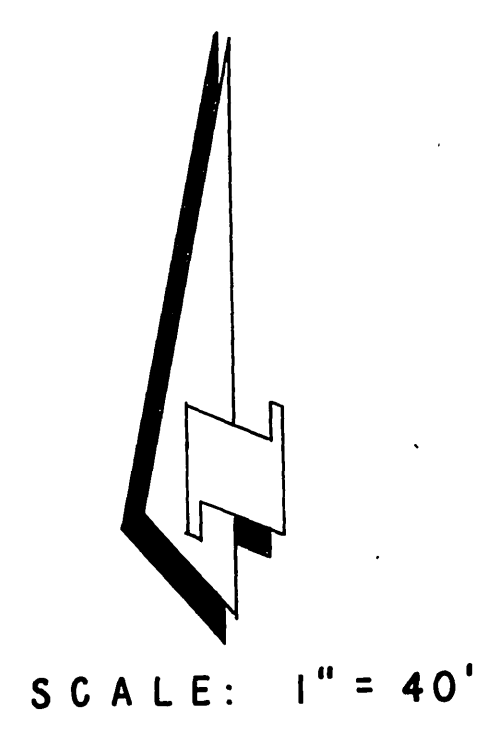


R. S. 52/13



- GENERAL NOTES
1. Construction shall be in accordance with the City of Riverside, Department of Public Works, Standard Drawings and the Standard Specifications for Public Works Construction, 1970 Edition.
  2. It shall be the responsibility of the contractor to clear the right of way in accordance with the provisions of the law as it affects each utility including irrigation lines and appurtenances and at no cost to the City.
  3. Pipe shall be bedded per Case 1, Standard Drawing No. 452, unless otherwise specified on plan.
  4. Location of wyes and laterals to be located at owners direction.
  5. All stubs and laterals to be constructed in accordance with Standard Drawing No. 562. Stubs shall be plugged and capped.
  6. Manhole frames and covers to be set to proposed pavement grades.
  7. Laterals are to be 4" and extended to property line.
  8. Prior to construction of sewer, Contractor is to expose existing sewer and contact Engineer for verification of existing elevations on Arlington Avenue.

★ "AS BUILT" RAB 9-73

Approved By *[Signature]*  
 General Superintendent / Chief Engineer - Water Dept.  
 Date 11-29-71

BENCH MARK: Elevation 1136.542  
 P.K. nail on curb Return S.E.  
 corner Chicago, Arlington and  
 Alhambra streets S.W. 1/4 S.P.C.  
 City of Riverside.

ALBERT A. WEBB ASSOCIATES  
 CIVIL ENGINEERS  
 RIVERSIDE, CALIFORNIA  
 APPROVED BY *[Signature]* DATE 10/20/71  
 R.E. No. 9876

MARK	REVISIONS	APPR.	DATE
Δ	Revised to show exist sewer S.D.P. 5-8075		10/20/71

CITY OF RIVERSIDE, CALIFORNIA  
 PUBLIC WORKS DEPARTMENT

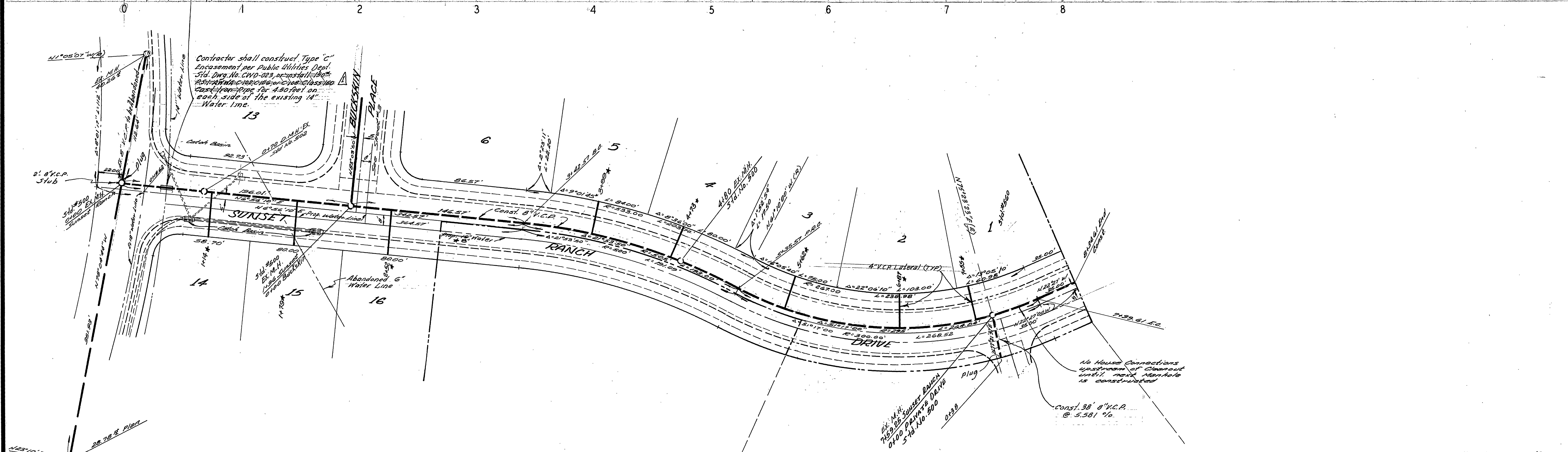
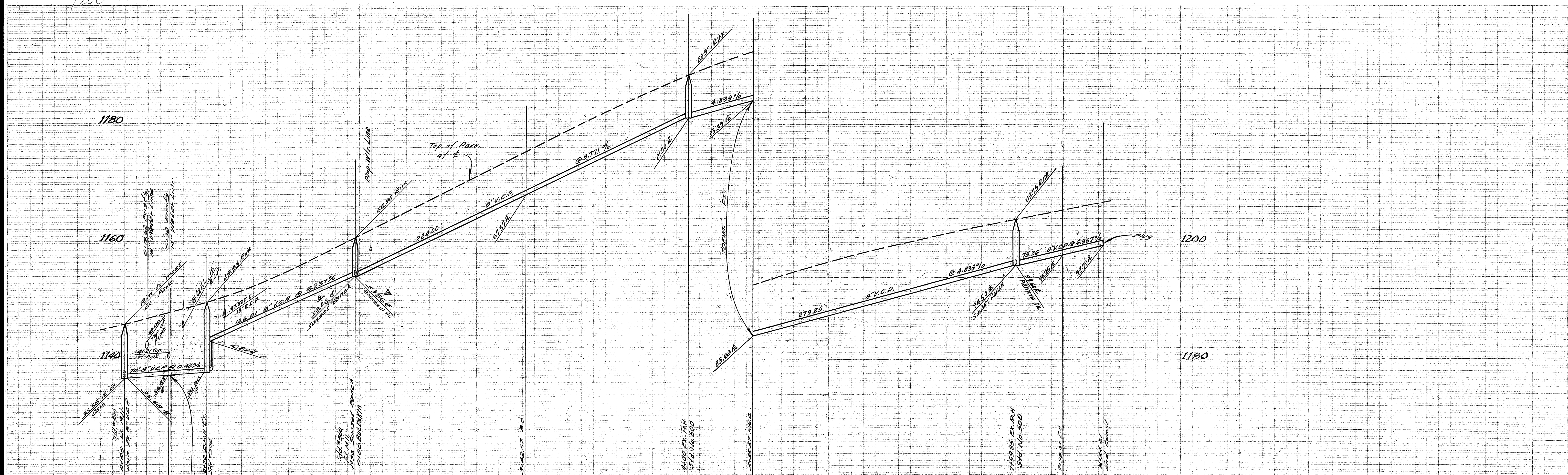
BY	DATE	APPROVED BY
<i>[Signature]</i>		<i>[Signature]</i>
Chief Pub. Wks. Eng.		DIRECTOR OF PUBLIC WORKS

DATE 11-29-71

SEWER PLAN AND PROFILE  
 INDEX  
 TRACT NO. 4413  
 HORIZ. SCALE: 1" = 40' VERT. SCALE: 1" =

PROJECT NO. 71-230  
 S-862  
 SHEET 1 OF 3  
 FILE NO. 71-230-B

1200



Contractor shall construct Type "C" Encasement per Public Utilities Dept. Std. Dwg. No. CWD-023, or its later revision. 30" DIA. CHURCH & DWIGHT CLASS 150 CONCRETE PIPE OR 4.50' DIA. ON EACH SIDE OF THE EXISTING 4\"/>

Approved by *Howard L. Oregon*  
 General Superintendent / Chief Engineer, Water Dept.  
 Date 11-24-71

SEWAGE MARK: Station 1136.542  
 PC Point of Curve Station 1136.542  
 Conv. Chicago, Arlitzton and Messersold B.M. No. 87-C  
 City of Riverside.

ALBERT A. WEBB ASSOCIATES  
 CIVIL ENGINEERS  
 RIVERSIDE, CALIFORNIA  
 APPROVED BY *Robert N. Webb* DATE 10/29/71  
 R.E. No. 9876

DESIGNED BY	REC
CHECKED BY	AB
DATE	11-24-71

CITY OF RIVERSIDE, CALIFORNIA  
 PUBLIC WORKS DEPARTMENT  
 APPROVED BY *Howard L. Oregon*  
 GENERAL SUPERINTENDENT / CHIEF ENGINEER  
 DATE 11-24-71

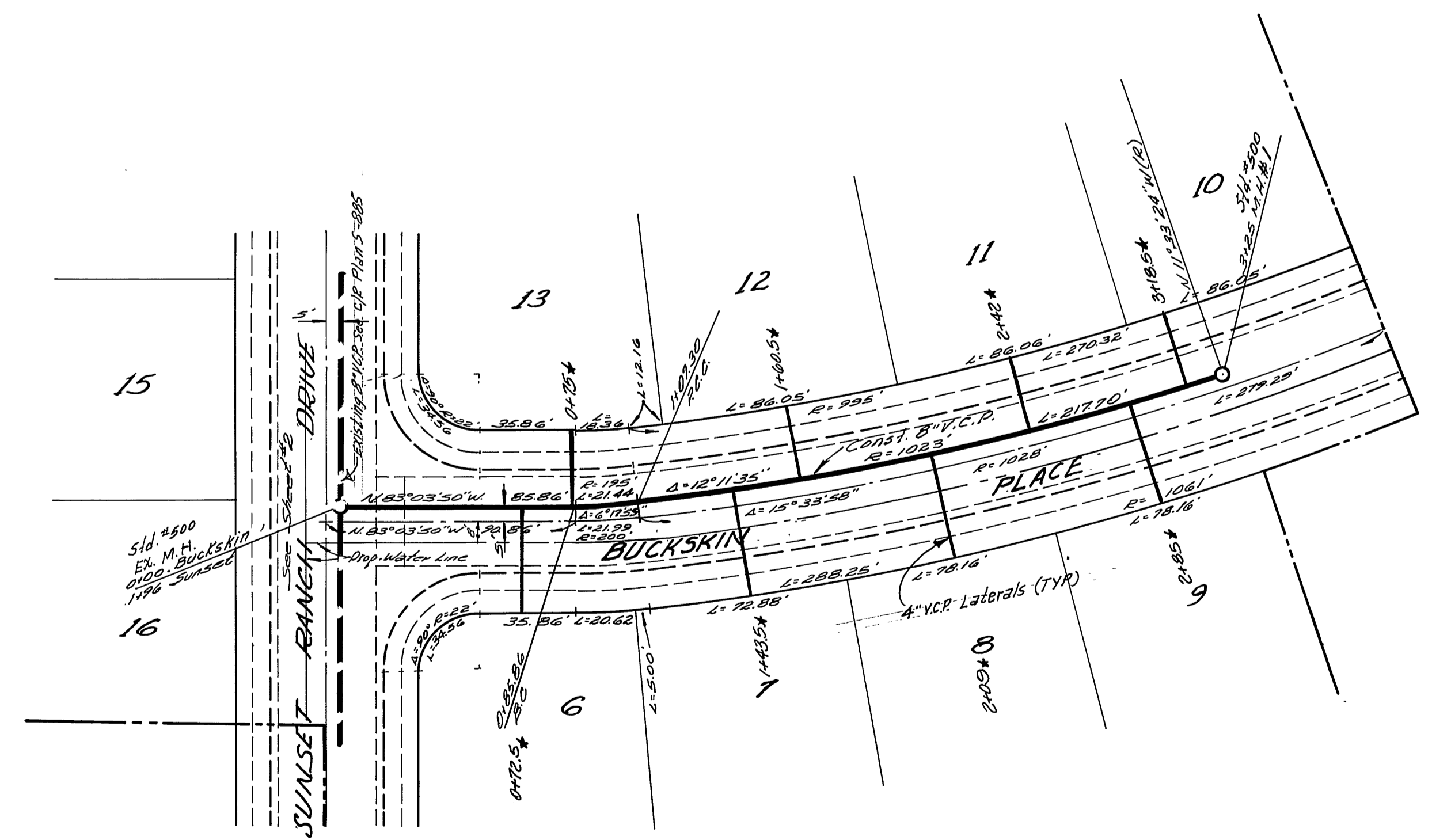
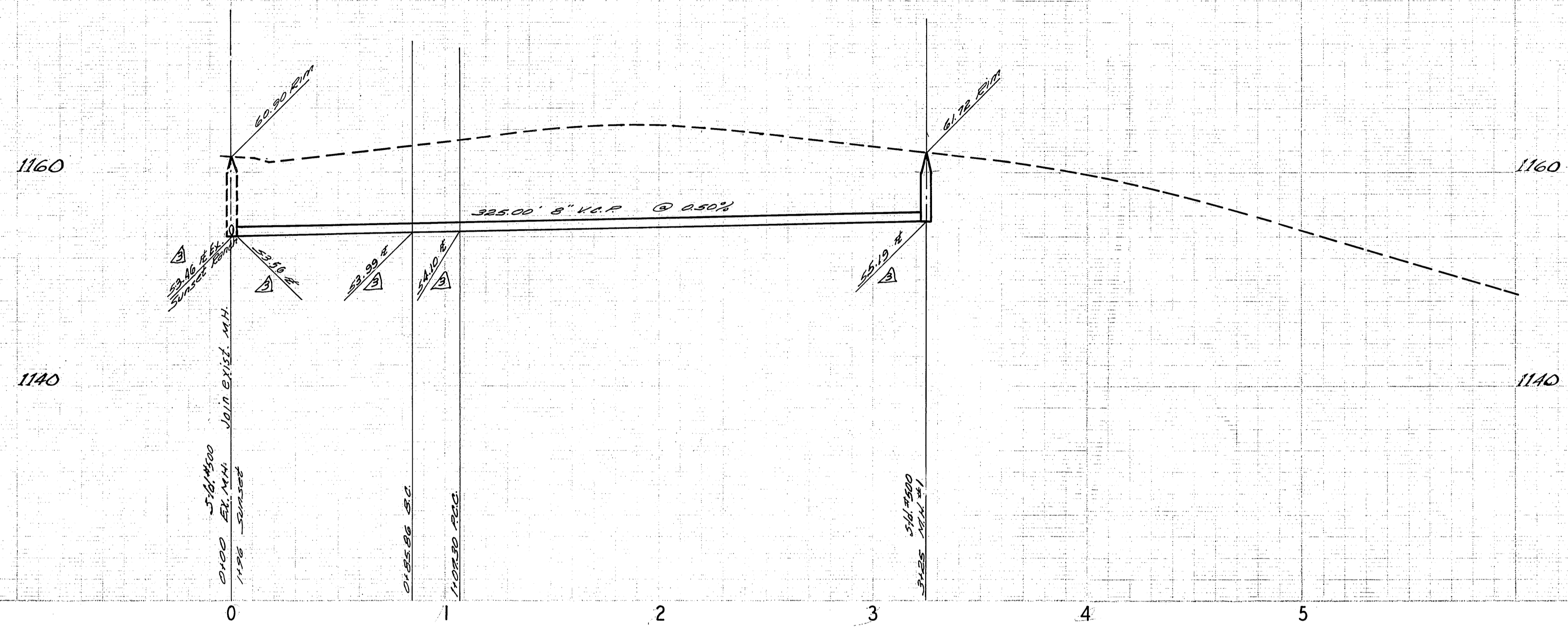
ACCOUNT No. 71-230  
 DRAWING NUMBER  
**S-862**  
 SHEET 2 OF 3  
 SCALE: HORIZ. 1" = 40' VERT. 1" = 8'

W.O. 71-230 FOR: SAM HARMATZ F.B. 1022

DESIGNED BY REC DRAWN BY H.L.M. CHECKED BY AB

DATE 11-24-71

DATE 11-24-71



★ AS BUILT P&B 9-73

Approved By *[Signature]*  
 General Superintendent of Chief Engineer Water Dept.  
 Date 11-24-71

BENCH MARK: Elevation 1136.542  
 P.K. 1111 on Comb. Station 5-E  
 corner Chas. St., Parkport and  
 Alessandro B.M. No. 87-C  
 City of Riverside

ALBERT A. WEBB ASSOCIATES  
 CIVIL ENGINEERS  
 RIVERSIDE, CALIFORNIA  
 APPROVED BY *[Signature]* DATE 12/20/71  
 R.E. No. 9876

DESIGNED BY REC	DRAWN BY H.L.M.	CHECKED BY <i>[Signature]</i>
W.O. 71-230	FOR: SAM HARMATZ	F.B. 1022

CITY OF RIVERSIDE, CALIFORNIA  
 PUBLIC WORKS DEPARTMENT  
 APPROVED BY *[Signature]* DATE 12/20/71  
 PRINCIPAL ENGINEER  
 PARK DEPARTMENT  
 TRAFFIC DIVISION  
 CHIEF PUB. WKS. ENGR. *[Signature]* DATE 2-3-72

SEWER PLAN AND PROFILE  
 BUCKSKIN PLACE  
 TRACT NO. 4413  
 SCALE: HORIZ. 1" = 40' VERT. 1" = 8'

ACCOUNT No. 71-230  
 DRAWING NUMBER  
**S-862**  
 SHEET 3 OF 3  
 71-230-B