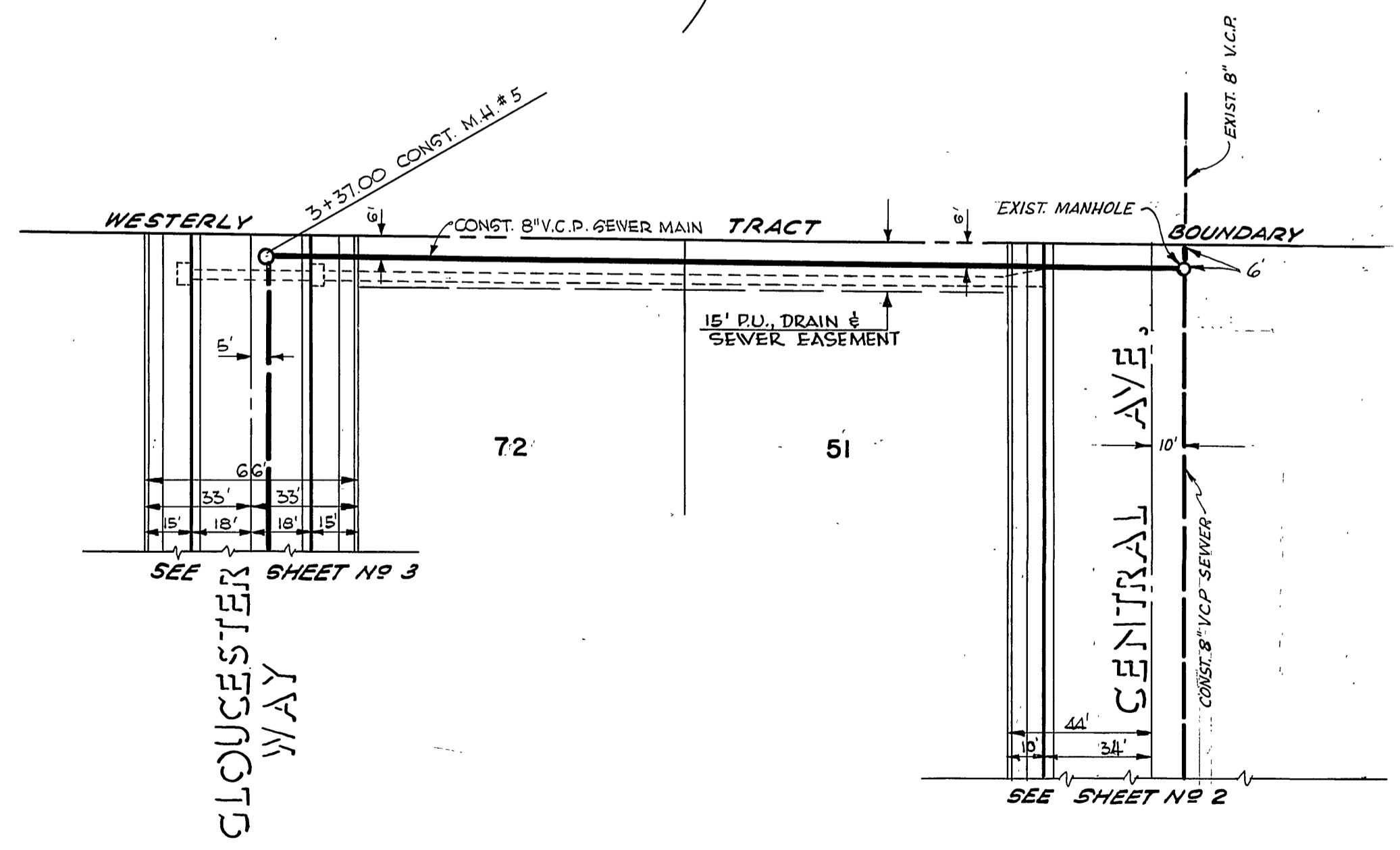
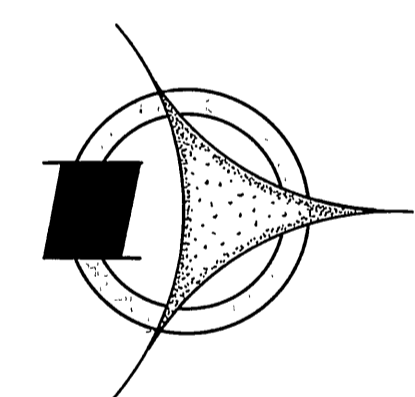
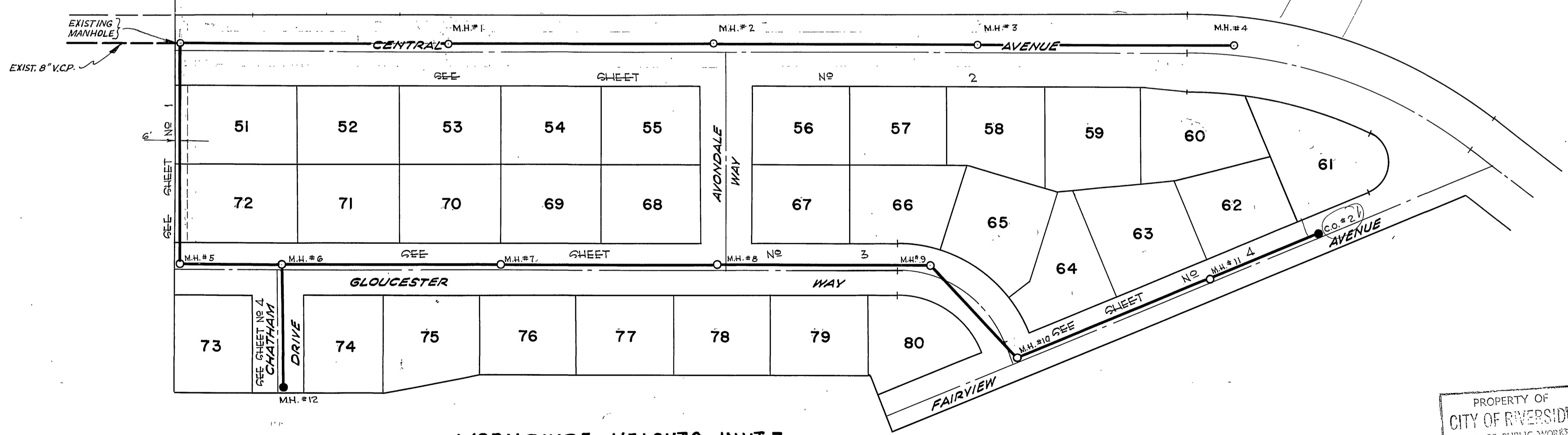
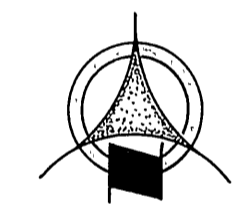


ESTIMATED SEWER QUANTITIES	
8" V.C.P. SEWER MAIN	3345 L.F.
4" V.C.P. HOUSE CONNECTION LATERALS	1490 L.F.
MANHOLES	12 EA.
CLEANOUTS	1 EA.

CONNECTION TO EXISTING SEWER MAIN



YORKSHIRE
HTS #2



**YORKSHIRE HEIGHTS UNIT 3
INDEX MAP**

SCALE - 1"=100'

Note: HOUSE CONNECTIONS TO BE LOCATED IN THE FIELD.
ALL MANHOLES TO BE CITY OF RIVERSIDE STD. 141-D.

RAYMOND L. QUIGLEY • REGISTERED ENGINEER • 7191
SOUTH BAY ENGINEERING CO. SANTA ANA, CALIFORNIA
APPROVED BY: *Raymond L. Quigley* DATE: 11/20/56
CITY OF RIVERSIDE, CALIFORNIA
DEPARTMENT OF PUBLIC WORKS

**SEWER PLAN & PROFILE
CONNECTION TO
EXISTING SEWER MAIN
YORKSHIRE HEIGHTS • UNIT 3**
HORIZONTAL SCALE • 1"=40' VERTICAL SCALE • 1"=4'

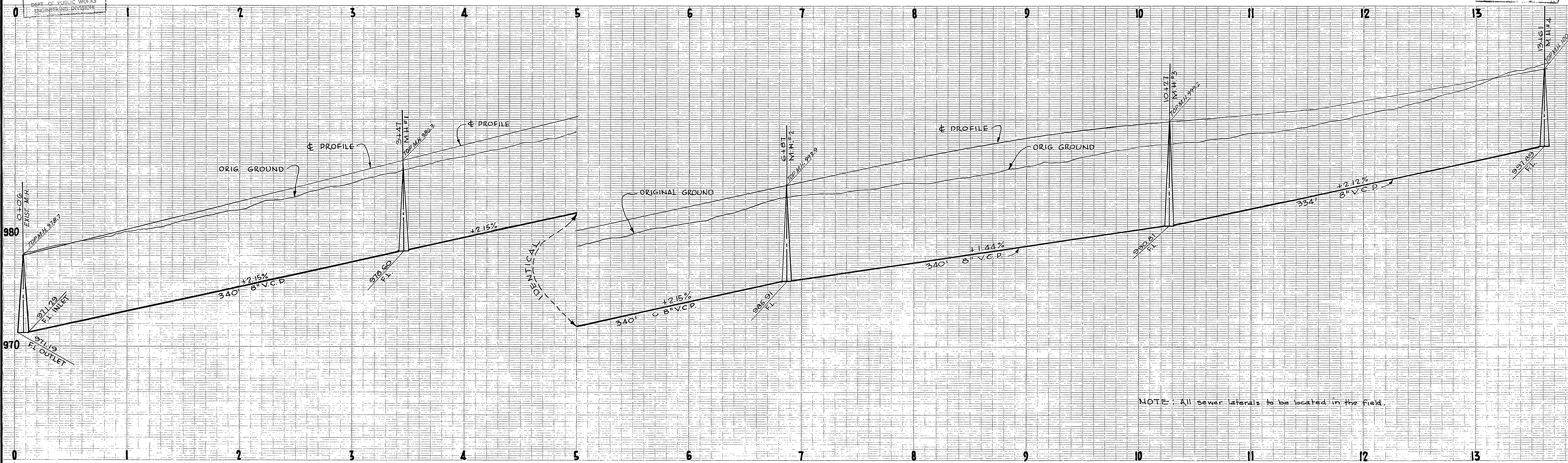
APPROVED BY: *Raymond L. Quigley*
DIRECTOR OF PUBLIC WORKS
DATE: June 3, 1957
No. **S-87**
SHEET 1 OF 4 SHEETS

PROPERTY OF
CITY OF RIVERSIDE
DEPT. OF PUBLIC WORKS
ENGINEERING DIVISION

SCALE: HORIZ. 1" = 40' VERT. 1" = 4'
DATE: 11/20/56

SCALE: HORIZ. 1" = 40' VERT. 1" = 4'
DATE: 11/20/56

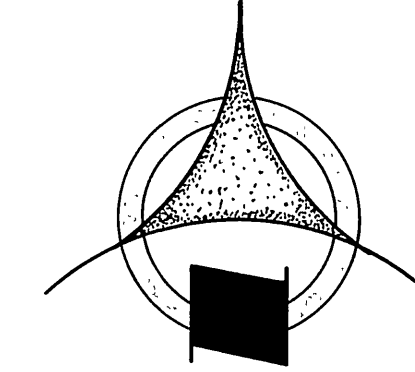
PROPERTY OF
CITY OF RIVERSIDE
DEPT. OF PUBLIC WORKS
ENGINEERING DIVISION



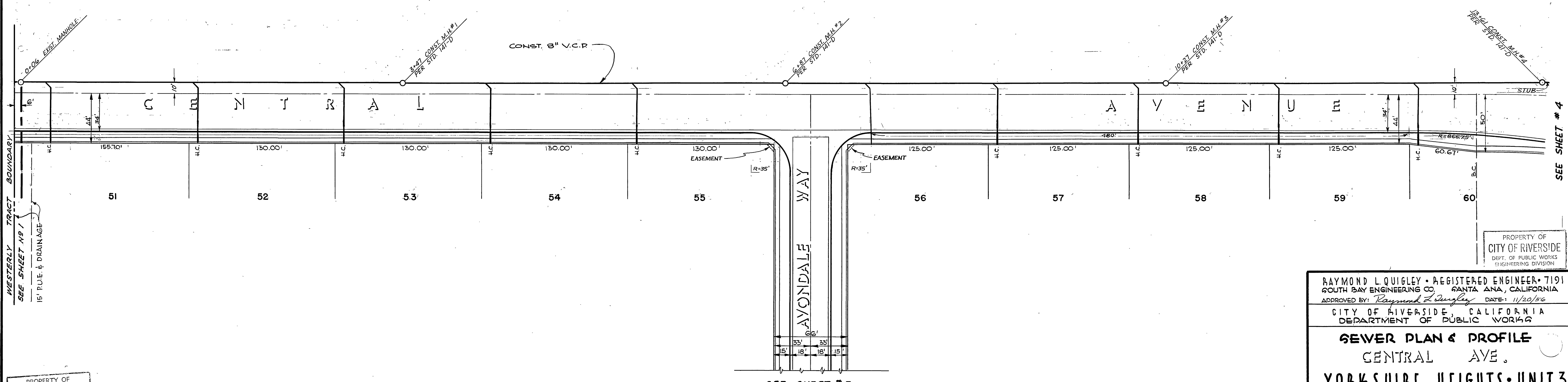
NOTE: All sewer laterals to be located in the field.

C E N T R A L

A V E N U E



BENCH MARK
TOP OF 2" I.P. (CAPPED) AT
INT. VICTORIA & CENTRAL PER
CITY F.S. 493/76
ELEV. 947.908



WESTERLY TRACT BOUNDARY
SEE SHEET #1
15' R.O.E. & DRAINAGE

SEE SHEET #3

SEE SHEET #4

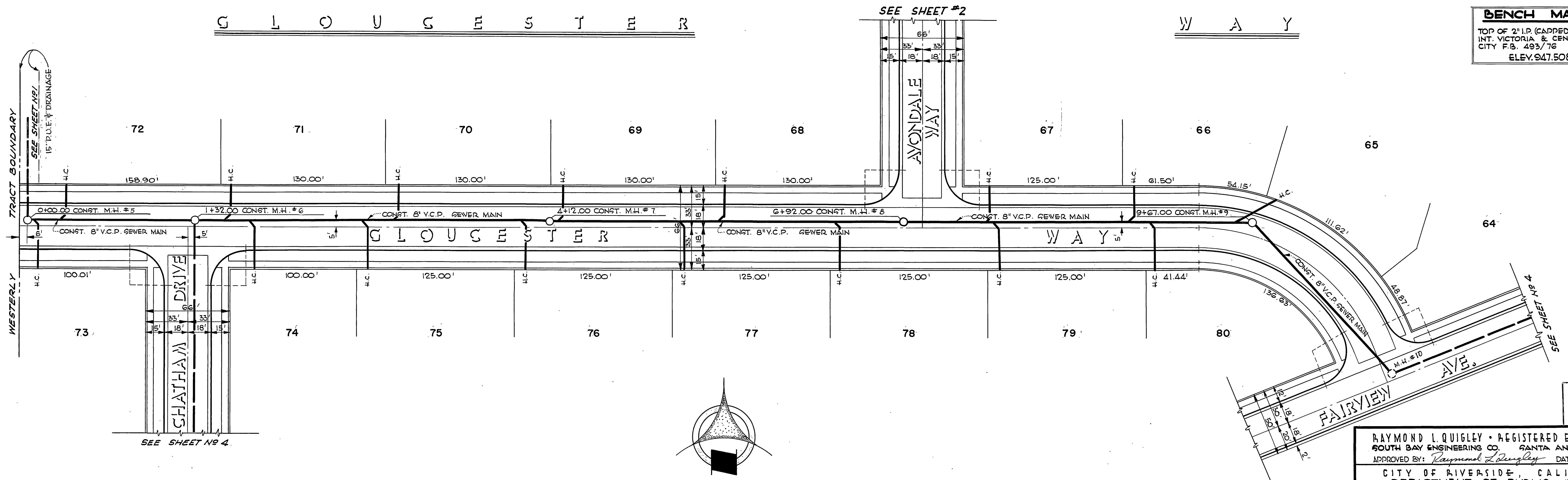
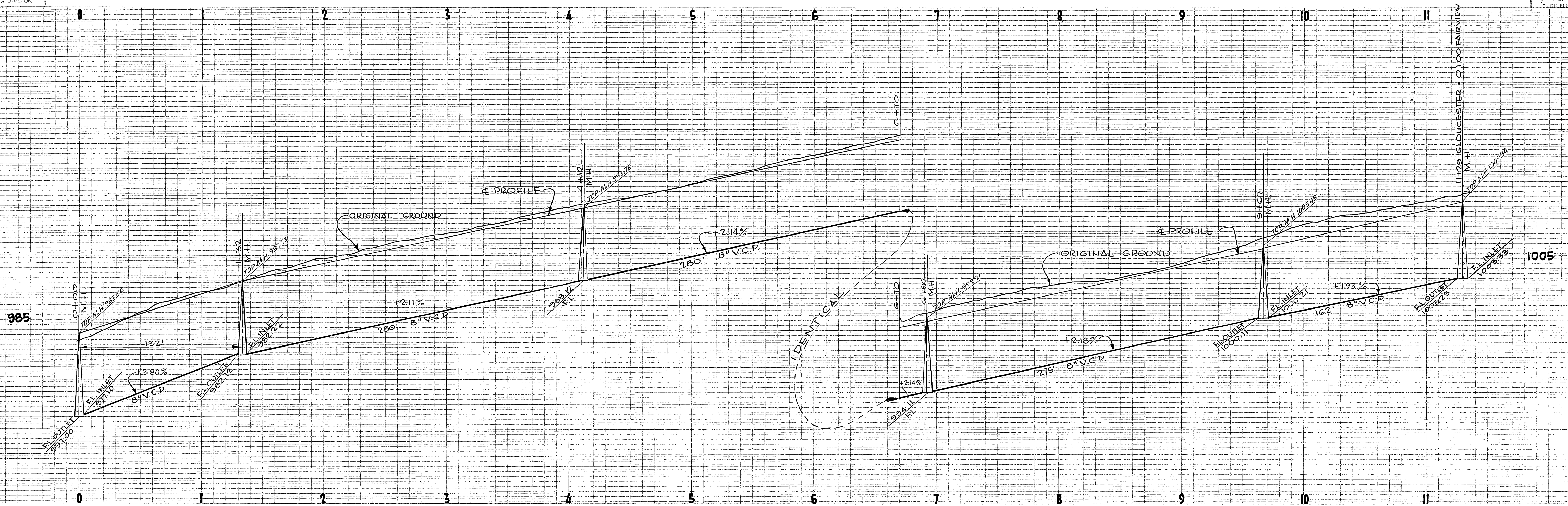
PROPERTY OF
CITY OF RIVERSIDE
DEPT. OF PUBLIC WORKS
ENGINEERING DIVISION

PROPERTY OF
CITY OF RIVERSIDE
DEPT. OF PUBLIC WORKS
ENGINEERING DIVISION

RAYMOND L. QUIGLEY • REGISTERED ENGINEER • 7191
GOUTH BAY ENGINEERING CO. SANTA ANA, CALIFORNIA
APPROVED BY: *Raymond L. Quigley* DATE: 11/20/56
CITY OF RIVERSIDE, CALIFORNIA
DEPARTMENT OF PUBLIC WORKS

SEWER PLAN & PROFILE
CENTRAL AVE.
YORKSHIRE HEIGHTS • UNIT 3
HORIZONTAL SCALE • 1" = 40' VERTICAL SCALE • 1" = 4'

APPROVED BY: *[Signature]* NO. **S-87**
DIRECTOR OF PUBLIC WORKS
DATE: June 3, 1957 SHEET 2 OF 4 SHEETS



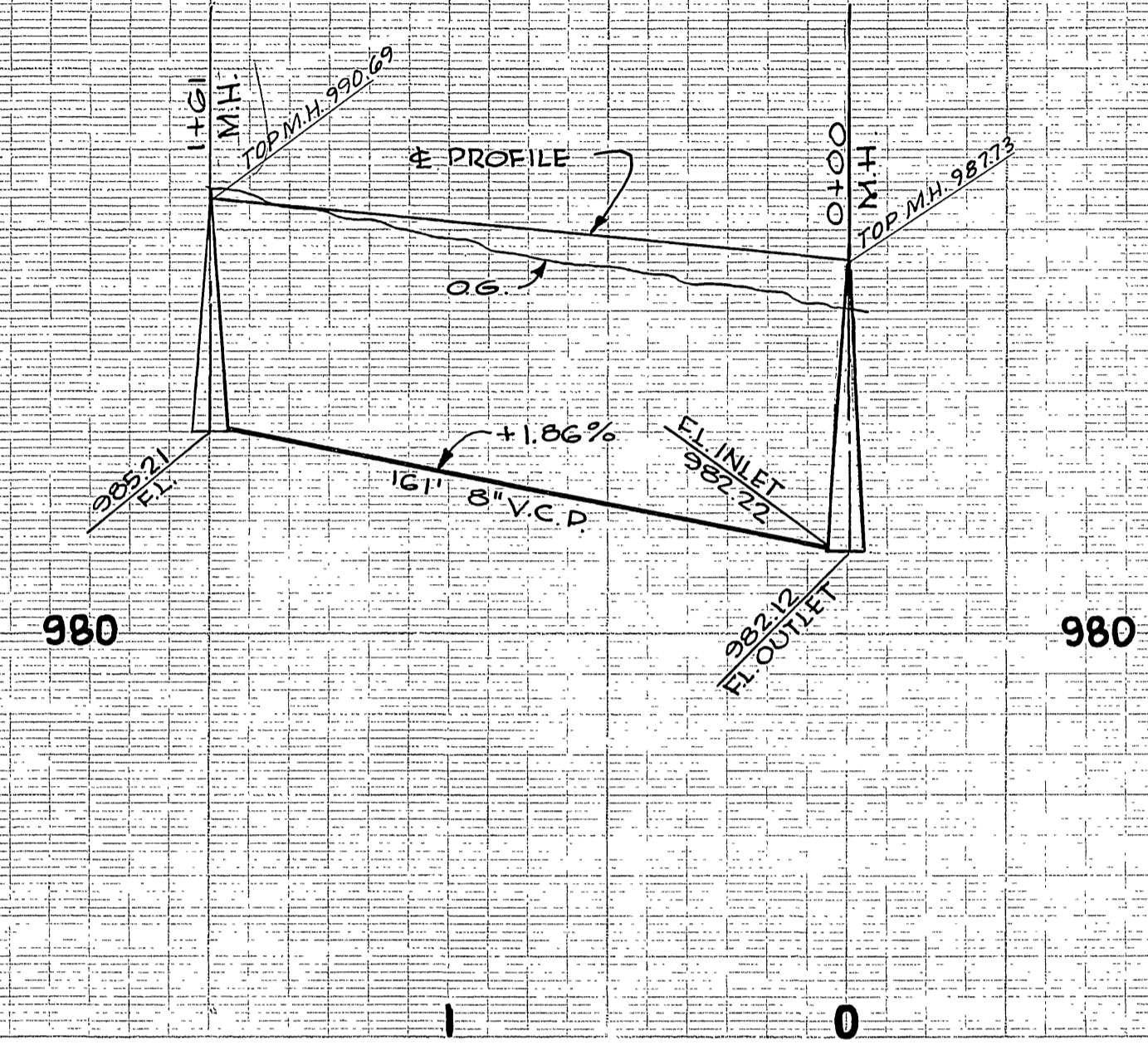
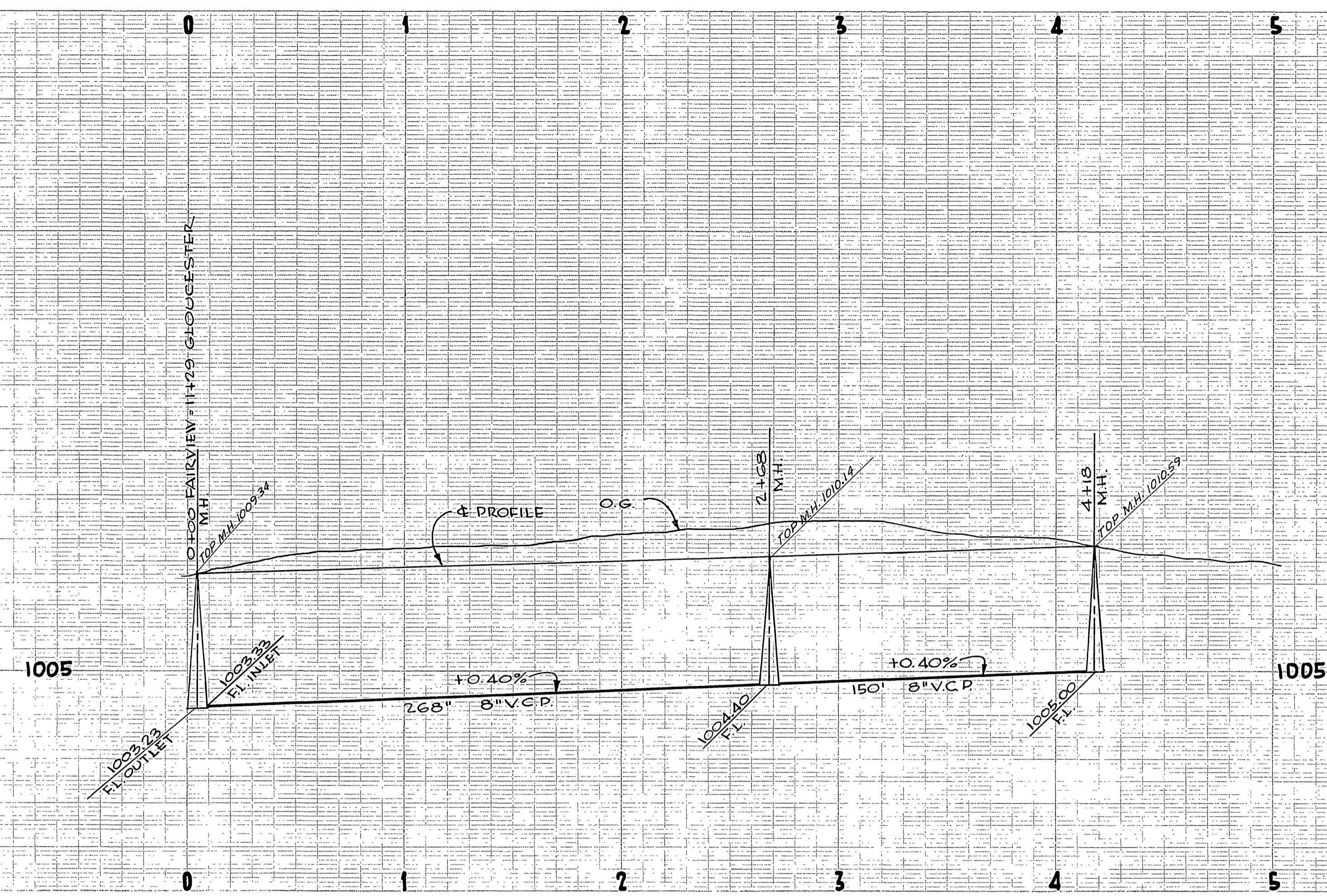
BENCH MARK
TOP OF 2" I.P. (CAPPED) AT
INT. VICTORIA & CENTRAL PER
CITY P.B. 493/76
ELEV. 947.508

RAYMOND L. QUIGLEY • REGISTERED ENGINEER • 7191
SOUTH BAY ENGINEERING CO. SANTA ANA, CALIFORNIA
APPROVED BY: *Raymond L. Quigley* DATE: 11/20/56
CITY OF RIVERSIDE, CALIFORNIA
DEPARTMENT OF PUBLIC WORKS

**SEWER PLAN & PROFILE
GLOUCESTER WAY**

YORKSHIRE HEIGHTS • UNIT 3
HORIZONTAL SCALE • 1" = 40' VERTICAL SCALE • 1" = 4'

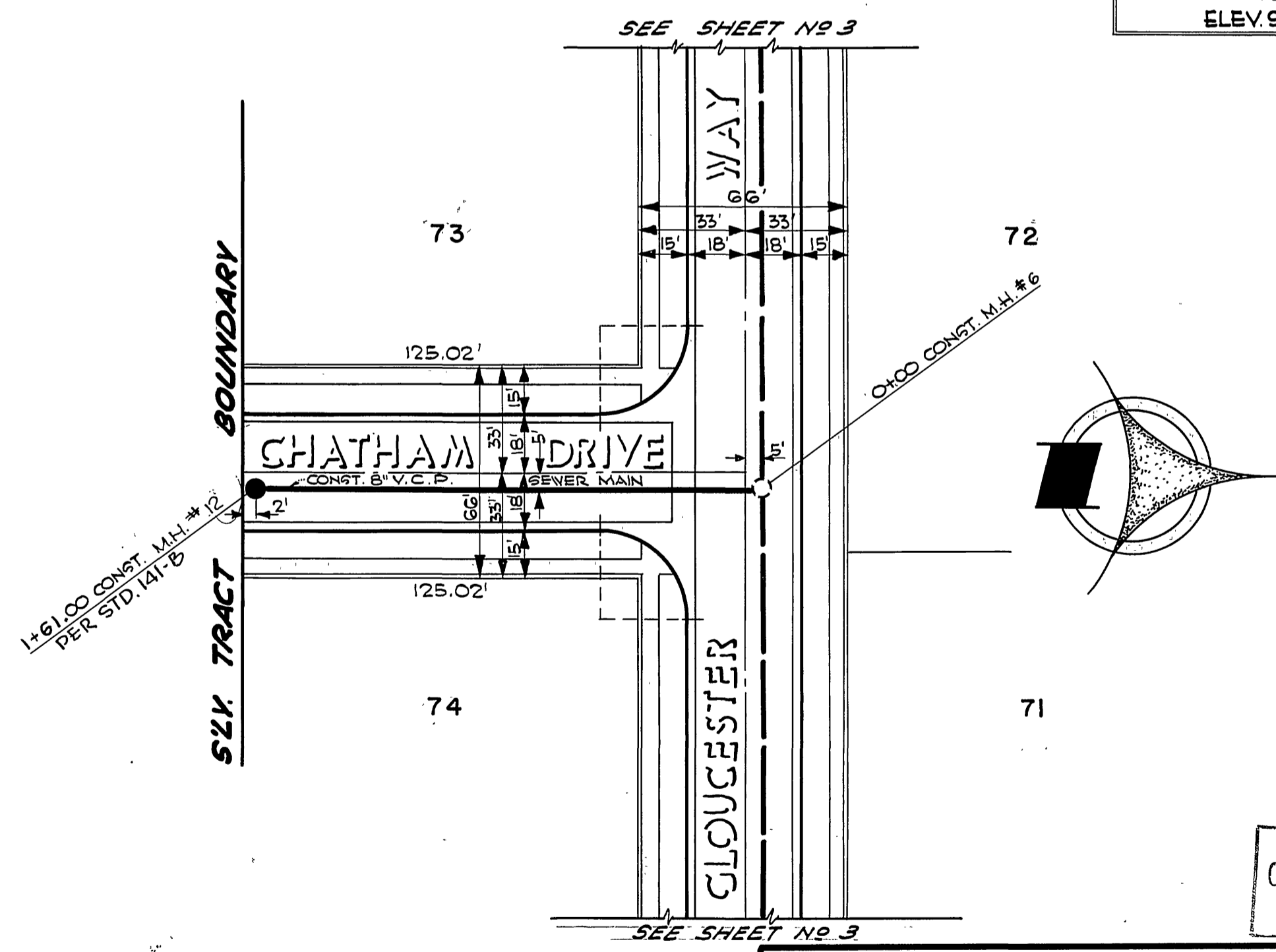
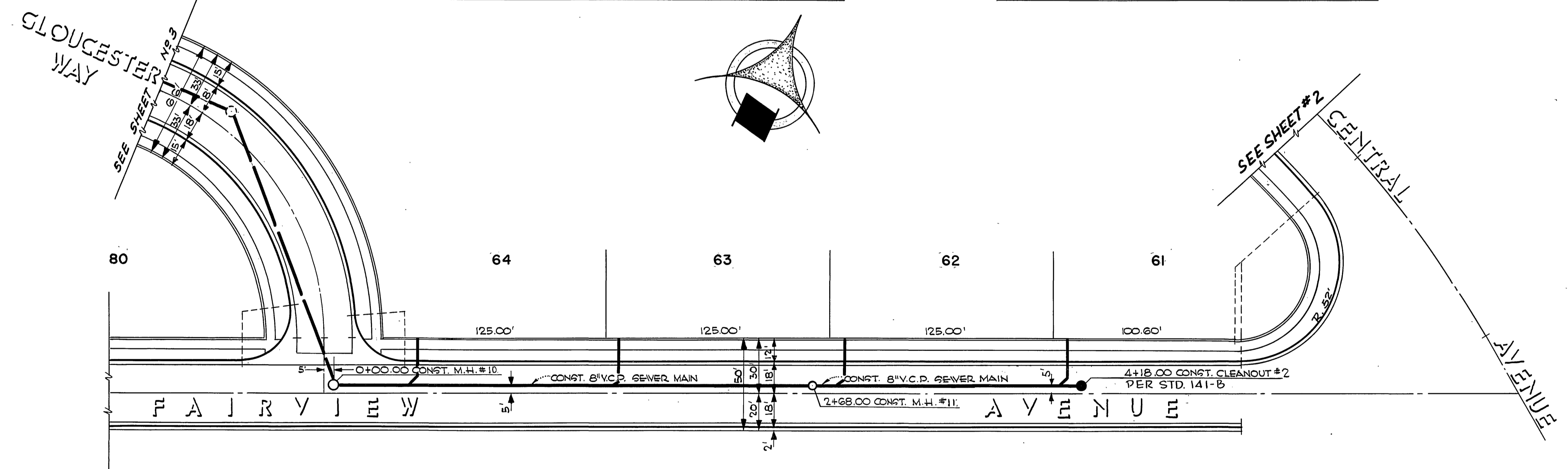
APPROVED BY: *Raymond L. Quigley* NO. **S-87**
DIRECTOR OF PUBLIC WORKS
DATE: *11/20/56* SHEET 3 OF 4 SHEETS



F A I R V I E W A V E N U E

C H A T H A M D R I V E

BENCH MARK
TOP OF 2" I.P. (CAPPED) AT E
INT. VICTORIA & CENTRAL PER
CITY F.S. 493/76
ELEV. 947.508



RAYMOND L. QUIGLEY • REGISTERED ENGINEER • 7191
SOUTH BAY ENGINEERING CO. SANTA ANA, CALIFORNIA
APPROVED BY: *Raymond L. Quigley* DATE: 11/20/56
CITY OF RIVERSIDE, CALIFORNIA
DEPARTMENT OF PUBLIC WORKS

SEWER PLAN & PROFILE
FAIRVIEW AVE.
CHATHAM DRIVE
YORKSHIRE HEIGHTS • UNIT 3
HORIZONTAL SCALE • 1" = 40' VERTICAL SCALE • 1" = 4'

APPROVED BY: *Raymond L. Quigley* N° **S-87**
DIRECTOR OF PUBLIC WORKS
DATE: June 3, 1957 SHEET 4 OF 4 SHEETS