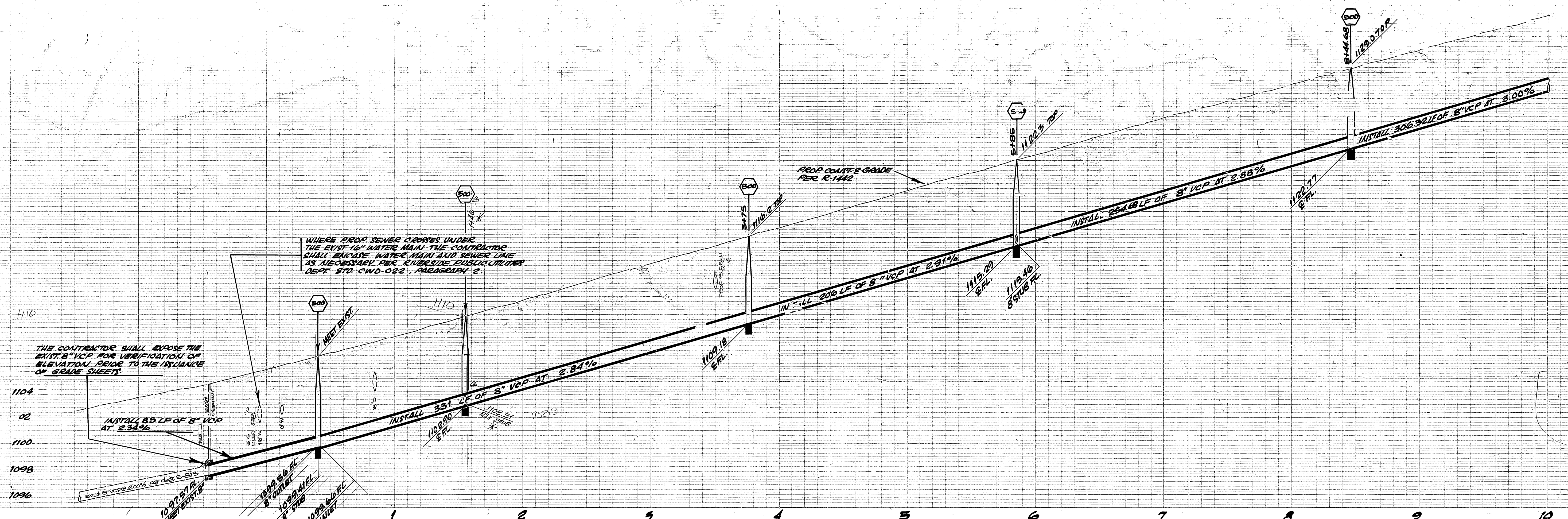
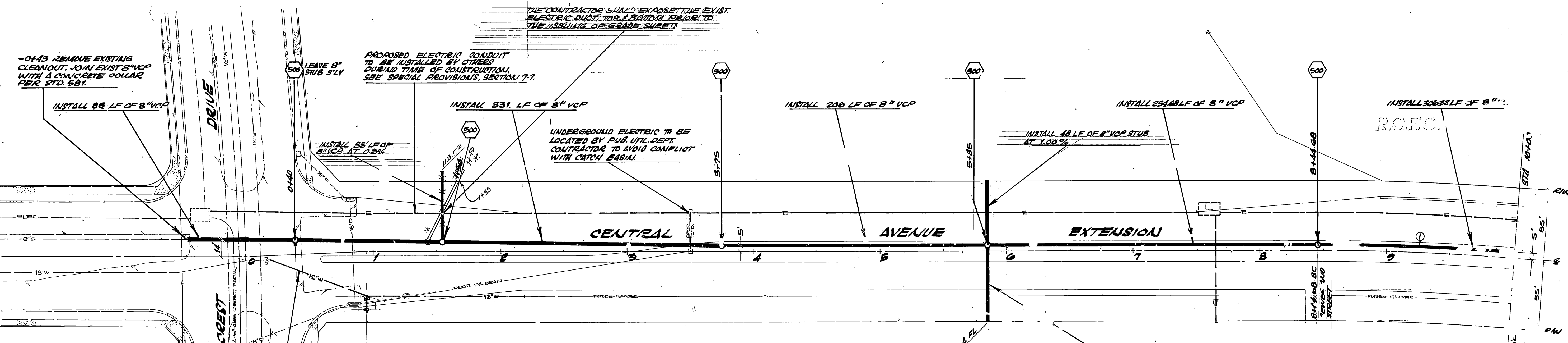


1134
32
30
28
26
1124



THE CONTRACTOR SHALL EXPOSE THE EXIST 8" VCP FOR VERIFICATION OF ELEVATION PRIOR TO THE ISSUANCE OF GRADE SHEETS.

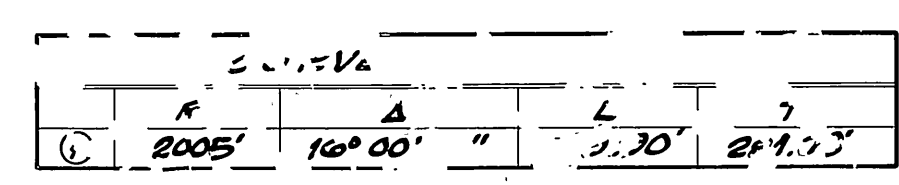
WHERE PROP. SEWER CROSSES UNDER THE EXIST 16" WATER MAIN THE CONTRACTOR SHALL ENCASE WATER MAIN AND SEWER LINE AS NECESSARY PER CHIEF'S DEPT. PUBLIC UTILITIES DEPT. STD. CIVD. 022, PARAGRAPH 2.



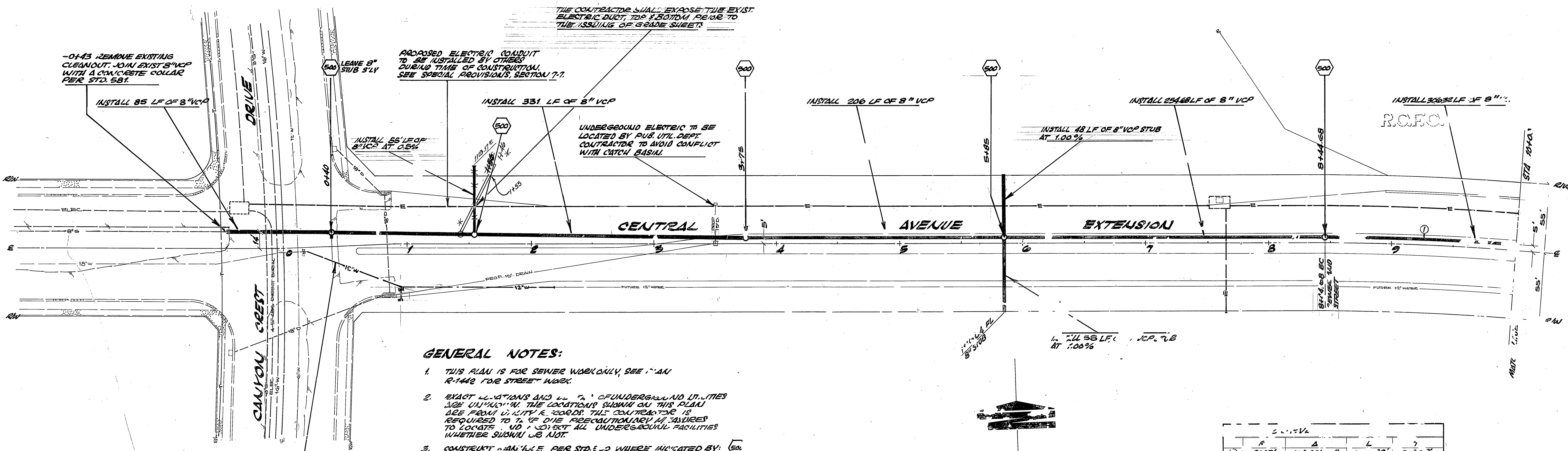
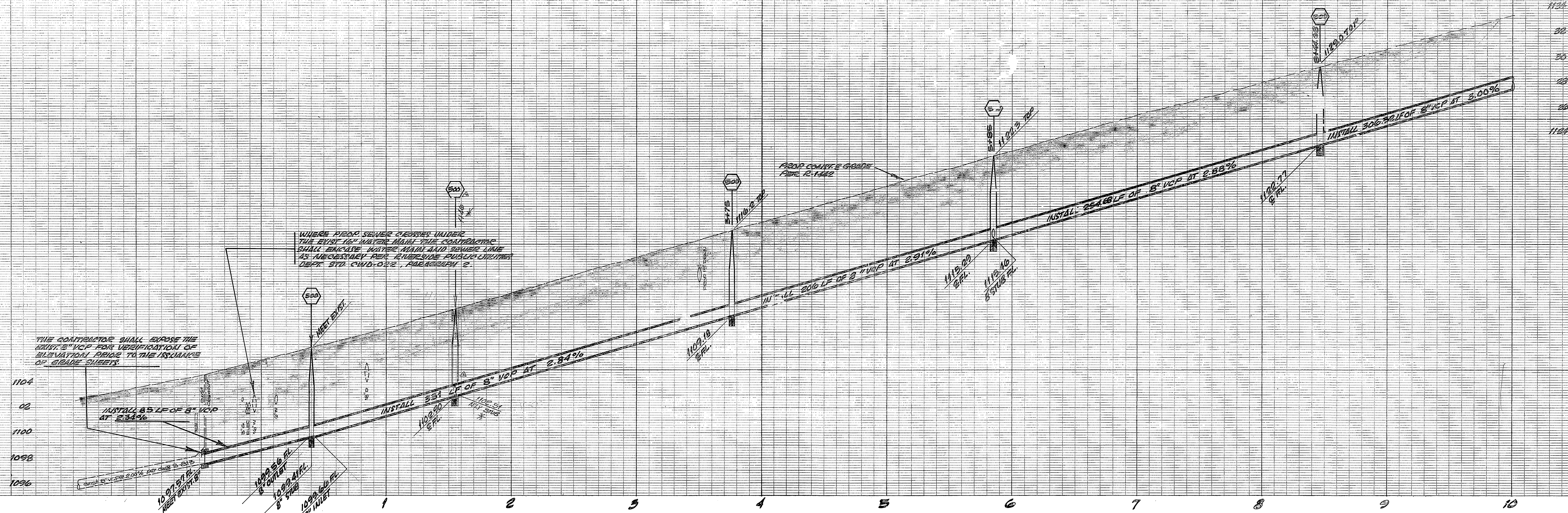
GENERAL NOTES:

1. THIS PLAN IS FOR SEWER WORK ONLY, SEE PLAN R-1442 FOR STREET WORK.
2. EXACT LOCATIONS AND DEPT. OF UNDERGROUND UTILITIES ARE UNKNOW. THE LOCATION SHOWN ON THIS PLAN ARE FROM CITY RECORDS. THIS CONTRACTOR IS REQUIRED TO TAKE DUE PRECAUTIONARY MEASURES TO LOCATE AND IDENTIFY ALL UNDERGROUND FACILITIES WHETHER SHOWN OR NOT.
3. CONSTRUCT MANHOLE PER STD. 453 WHERE INDICATED BY STATIONING SHOWN. SET MANHOLE COVERS TO GRADES SHOWN IN PROFILES.
4. INSTALL THE VCP PER TRENCH STANDARD 453 W. BED PER STD. 452, USE 1.
5. CAP THE 4" LATERALS AND 8" STUBS WITH REMOVABLE PLUGS.

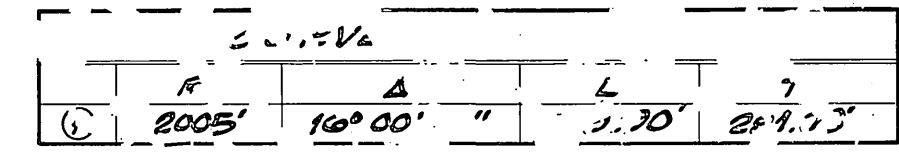
PROPOSED WATER PIPE TO BE INSTALLED BY CITY RIVERSIDE DURING TIME OF CONSTRUCTION SEE SPECIAL PROVISIONS, EC. 7.7.



CITY OF RIVERSIDE, CALIFORNIA DEPARTMENT OF PUBLIC WORKS		PROJECT NO. S-871
APPROVED BY PRINCIPAL ENGINEER PARK DEPARTMENT TRAFFIC DIVISION CHIEF P. W. ENER	APPROVED BY DIRECTOR OF PUBLIC WORKS	SHEET 1 OF 2
DESIGNED BY DRAWN BY CHECKED BY	DATE	FILE NO.

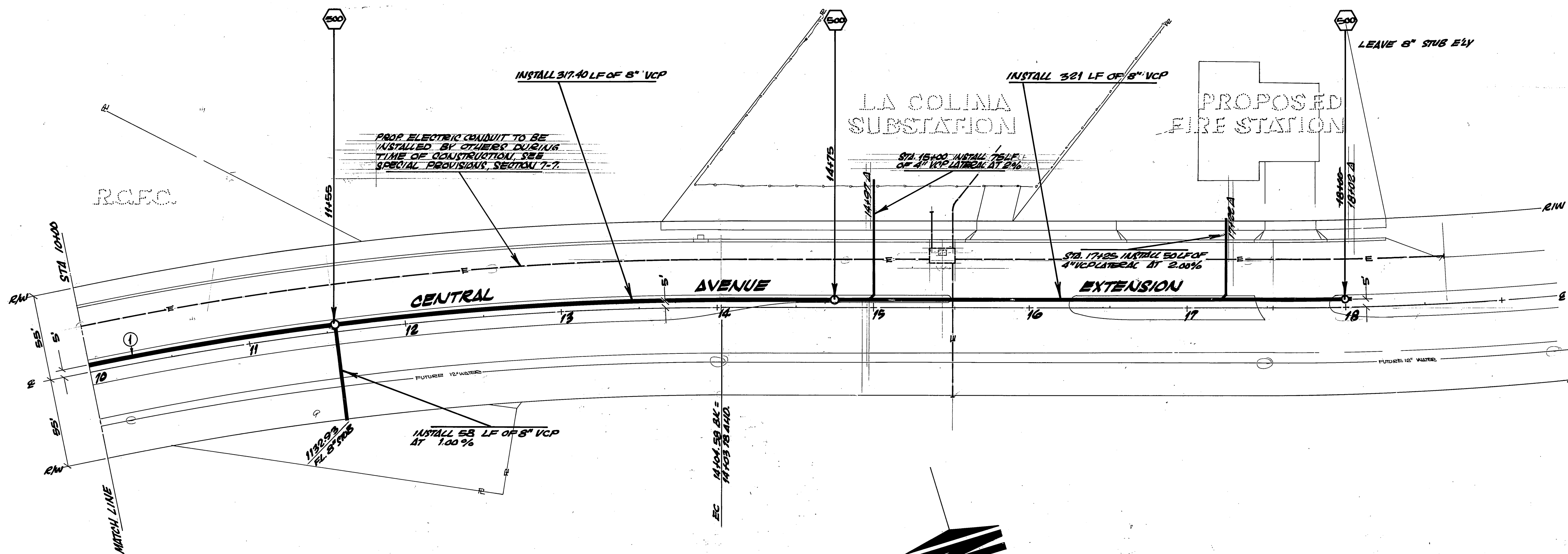
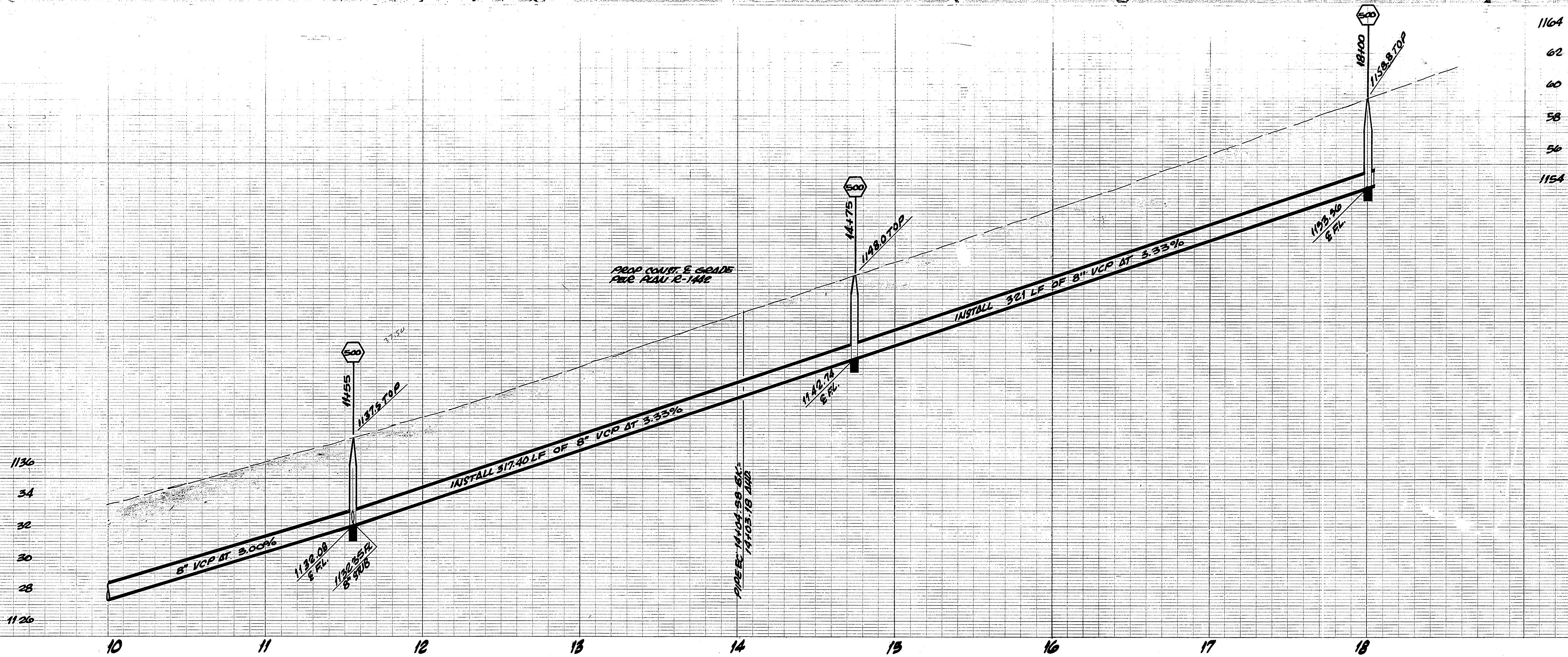


- GENERAL NOTES:**
- THIS PLAN IS FOR SEWER WORK ONLY. SEE PLAN R-1442 FOR STREET WORK.
 - EXACT LOCATIONS AND DEPT. OF UNDERGROUND UTILITIES ARE UNKNOW. THE LOCATIONS SHOWN ON THIS PLAN ARE FROM UTILITY RECORDS. THIS CONTRACTOR IS REQUIRED TO TAKE DUE PRECAUTIONARY MEASURES TO LOCATE AND IDENTIFY ALL UNDERGROUND FACILITIES WHETHER SHOWN OR NOT.
 - CONSTRUCT MAIN LINE PER STD. 50 WHERE INDICATED BY: AT STATIONS SHOWN. SET MANHOLE COVERS TO GRADES SHOWN IN PROFILES.
 - INSTALL THE VCP PER TRENCH STANDARD 453 W/ BED PER STD. 492, CLISE 1.
 - CAP THE 4" LATERALS AND 8" STUBS W/ REMOVABLE 12" DIA.



CITY OF RIVERSIDE, CALIFORNIA DEPARTMENT OF PUBLIC WORKS		PROJECT NO. S-871
APPROVED BY PRINCIPAL ENGINEER PARK DEPARTMENT TRAFFIC DIVISION CHIEF P. W. ENGR.	BY 9/20 DATE	SHEET 1 OF 2
DESIGNED BY DRAWN BY CHECKED BY		FILE NO.

Central Avenue Sewer
 Canyon Crest to 1800' E'ly
 HORIZ. SCALE: 1" = 40' VERT. SCALE: 1" = 4'



CURVE		DATA	
R	Δ	L	T
2005'	16° 00' 00"	559.90'	281.78'

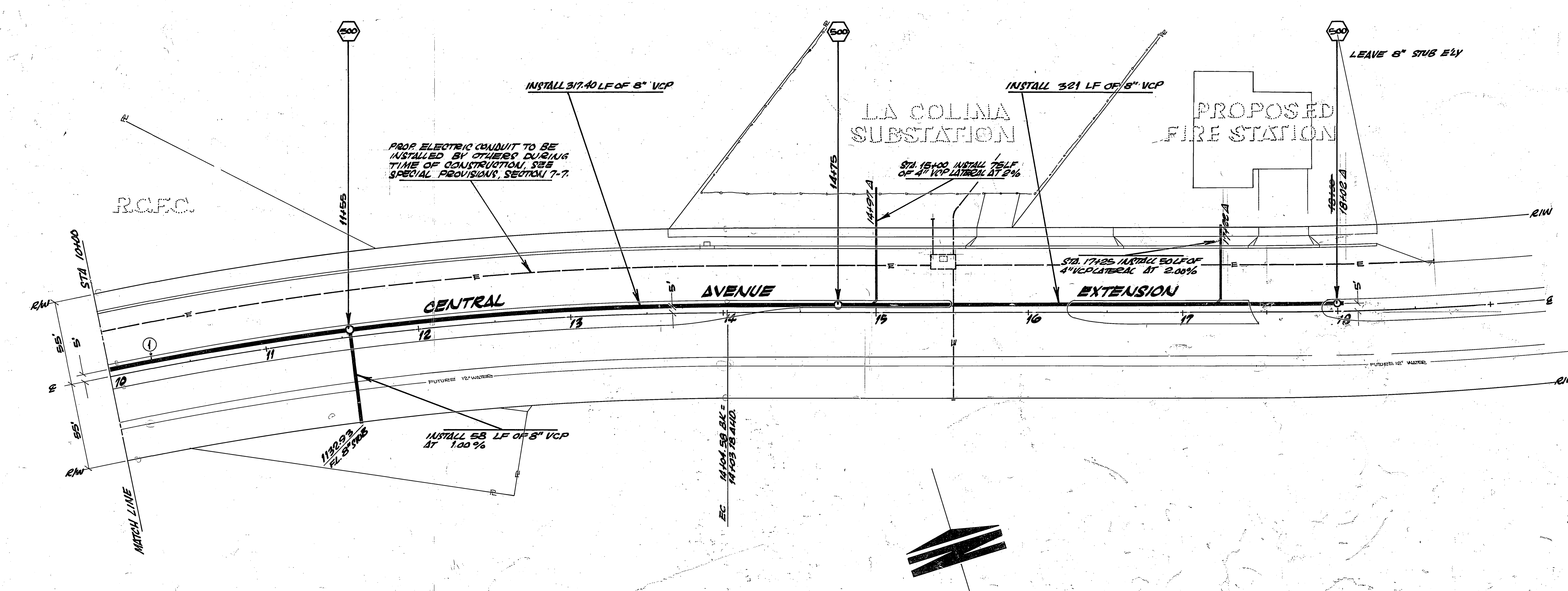
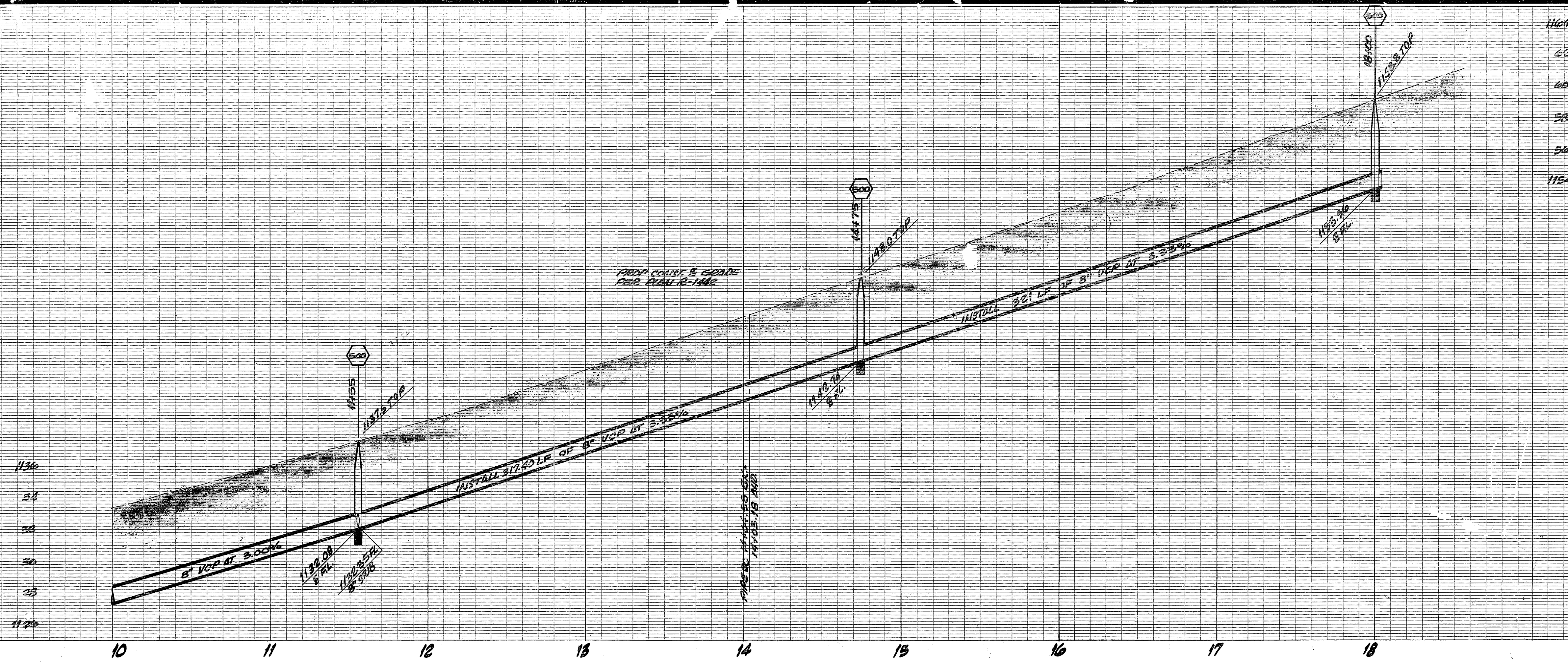
DESIGNED BY	URWIN BY	CHECKED BY	BE
APPROVED BY	PRINCIPAL ENGINEER	DATE	9/20
TRAFFIC DIVISION	CHIEF P. W. ENGR.	DATE	3-21

CITY OF RIVERSIDE, CALIFORNIA
DEPARTMENT OF PUBLIC WORKS

Central Avenue Sewer
Canyon Crest to 1800' E'ly

PROJECT NO. S-871
SHEET 2 OF 2

HORIZ. SCALE: 1" = 40'
VERT. SCALE: 1" = 4'



CURVE		DATA	
R	Δ	L	T
① 2005'	16° 00' 00"	529.90'	281.78'

MARK	REVISIONS	APPR.	DATE
A	AS BUILT		10/20/20

CITY OF RIVERSIDE, CALIFORNIA
 DEPARTMENT OF PUBLIC WORKS

APPROVED BY: [Signature]
 PRINCIPAL ENGINEER: [Signature]
 PARK DEPARTMENT: [Signature]
 TRAFFIC DIVISION: [Signature]
 CHIEF P. W. ENGR. [Signature]

Central Avenue Sewer
 Canyon Crest to 1800' E'ly

HORIZ. SCALE: 1" = 40' VERT. SCALE: 1" = 4'

PROJECT NO. S-871
 SHEET 2 OF 2
 FILE NO.