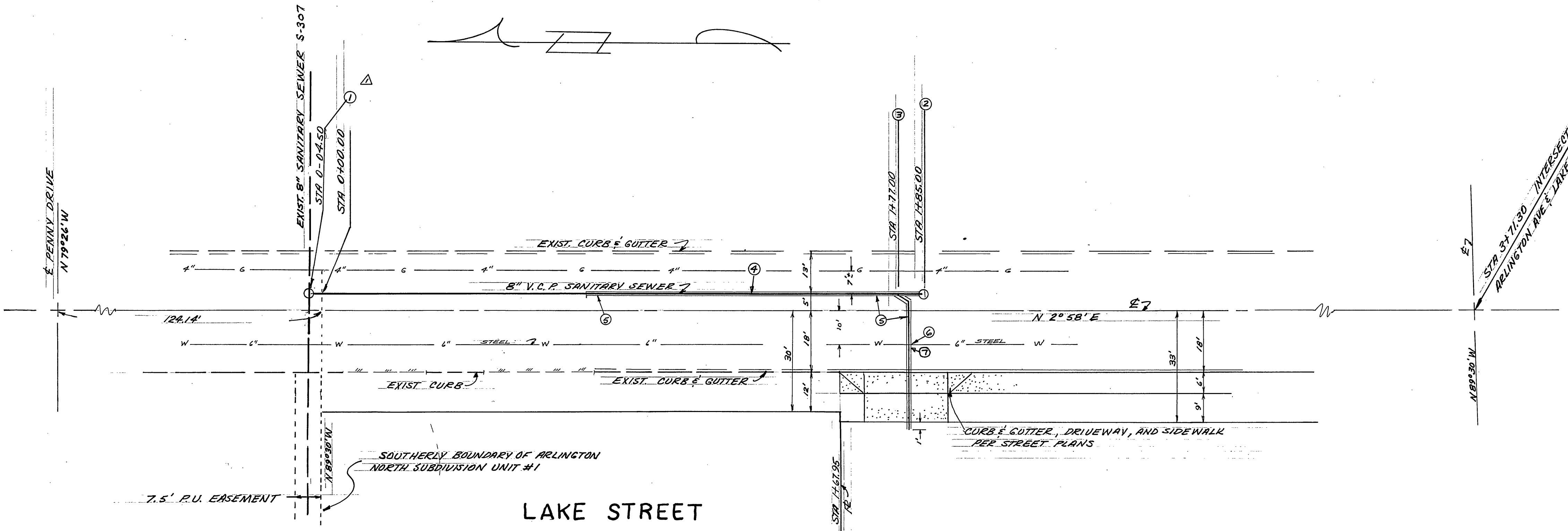
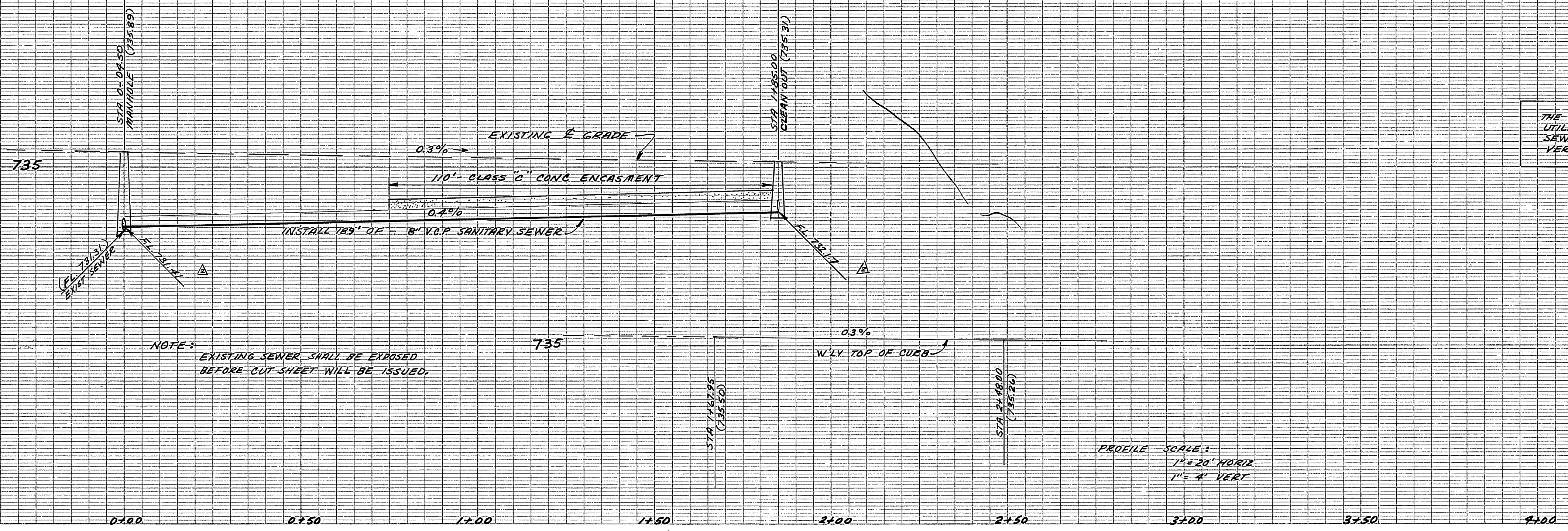


GENERAL NOTES

CONSTRUCTION SHALL BE IN ACCORDANCE WITH STANDARD SPECIFICATIONS FOR PUBLIC WORKS CONSTRUCTION, 1970 EDITION, AND CITY OF RIVERSIDE STANDARD DRAWINGS.

THE CONTRACTOR SHALL DETERMINE THE TRUE LOCATION OF ANY UNDERGROUND UTILITIES PRIOR TO LAYING ANY LINES WHICH ARE TO CONNECT TO EXISTING SEWER OR WATER LINES. THESE LINES SHALL BE EXPOSED AND JOIN POSITIONS VERIFIED. THE CONTRACTOR SHALL PROTECT ALL UNDERGROUND UTILITIES.



CONSTRUCTION NOTES:

1. CONSTRUCT MANHOLE AROUND EXISTING 8" SEWER PER STD DWG 500
2. CONSTRUCT CLEANOUT PER CITY STANDARD DWG 560
3. INSTALL 6" V.C.P. HOUSE CONNECTION PER STD 562
4. INSTALL 8" V.C.P. SANITARY SEWER CASE I BEDDING PER STD 452 UNLESS OTHERWISE SPECIFIED
5. CONSTRUCT CONCRETE ENCASEMENT PER CASE III STD DWG 452
6. WATER LINE TO BE RELOCATED BY CITY FORCES AT DEVELOPER'S EXPENSE
7. SEWER LATERAL ENCASEMENT AS PER R.U.D. WATER DIVISION CWD-023 CASE 'B' 4.5' EACH SIDE OF WATER LINE CROSSING. NOTE: NOTIFY CHARLES HARE 2 WEEKS PRIOR TO SEWER CONSTRUCTION.

SALKIN ENGINEERING CORPORATION
 1045 W. COLLINS
 ORANGE CALIFORNIA
 PHONE 633-7261 (Area Code 714)

Samuel Salkin
 SAMUEL SALKIN RCE 13420
 8/MARCH 1972
 DATE

APPROVED:
Howard R. Crean 3-28-72
 WATER DIVISION

REVISIONS	DATE	BY
1. REVISE SEWER M.H. TO STA 0-04.50 TO MATCH TO ARCH	4/6/72	WJD
2. LOWER SEWER GRADES 0.4' EXIST.	1/14/72	WJD
3. CHANGE NOTE 5 FROM CLASS II TO CLASS III	4/6/72	WJD

CITY OF RIVERSIDE, CALIFORNIA
 DEPARTMENT OF PUBLIC WORKS

APPROVED BY:	BY:	DATE:
<i>Samuel Salkin</i>		3/23/72
DIRECTOR OF PUBLIC WORKS		

SANITARY SEWER
 N.W. CORNER OF LAKE ST.
 & ARLINGTON AVE.
 R-70-645

PROJECT NO.
5-873
 SHEET 1 OF 1
 FILE NO.

* AS BUILT 8/2/72 KARL