

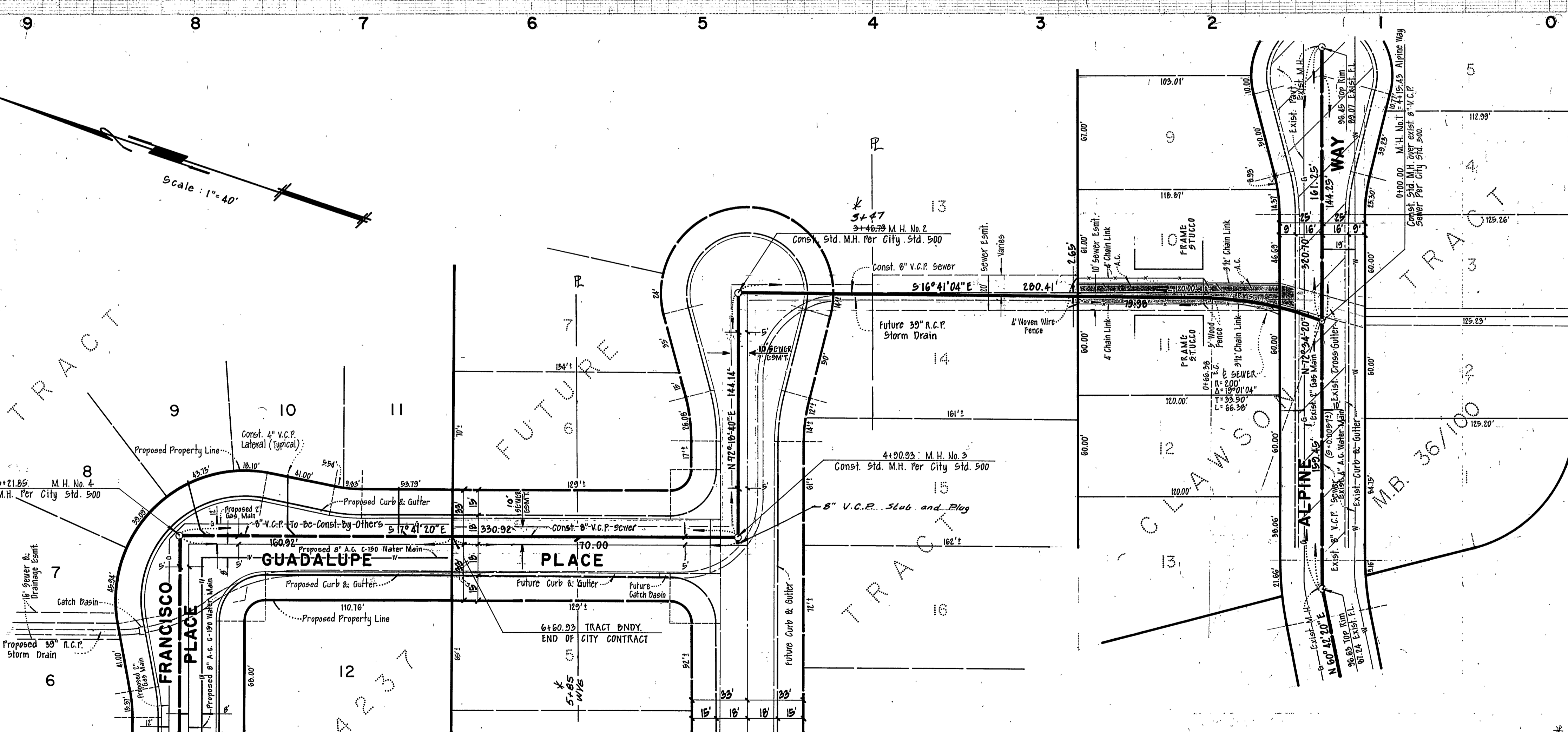
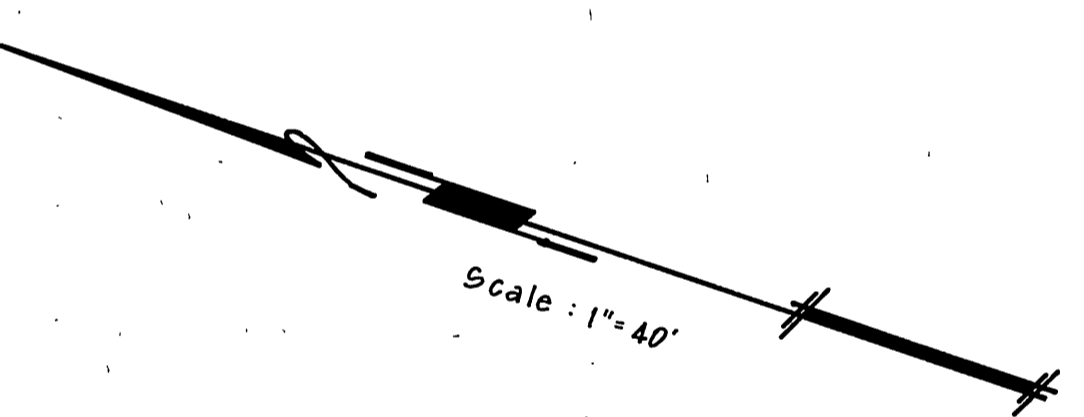
SEE TR 4237
DWG. N°

810
800

END OF
CITY CONTRACT
Med. Existing 8" V.C.P.

PROFILE SCALE
HORIZ 1" = 40'
VERT 1" = 4'

790
780



TRACT 6
TRACT 7
TRACT 8
TRACT 9
TRACT 10
TRACT 11
TRACT 12

SEE TR. 4237
DWG. N°

GENERAL NOTES

1. Construction shall be in accordance with the Standard Specifications for Public Works Construction, 1970 Edition and Standard Drawings.
2. It shall be the responsibility of the contractor to clear the right-of-way in accordance with the provisions of the law as it affects each utility including irrigation lines and appurtenances and at no cost to the City.
3. Pipe shall be bedded per Case I Standard Drawing N° 452.
4. All manholes to be constructed per Standard Drawing N° 500.
5. Location of "tees" and "laterals" will be determined in the field by the owner or his representative.
6. Prior to trenching, the contractor is to uncover existing sewer pipe and contact the engineer to verify the existing elevation.
7. It shall be the contractor's responsibility to familiarize himself with the jobsite and any underground facilities shown or not shown on this plan. The contractor will not be responsible for any damage to underground facilities.

BENCH MARK: PK. nail in curb return at the Northeast corner of Alpine Way and La Sierra Ave. ELEV. = 796.34

* CORRECTION OF EMBLEMENT FROM 3/30/78
* AS BUILT LABEL 12/15/78

GARNER TEE TRACADAS & TROY, INC.
CIVIL ENGINEERING · LAND SURVEYING
357 West Second Street
San Bernardino California
Phone TU5-0266
DATE 3/16/78
FRANK TRACADAS R.C.E. 11447

CITY OF RIVERSIDE, CALIFORNIA
DEPARTMENT OF PUBLIC WORKS
APPROVED BY: [Signature]
DATE: 3/16/78
TRAFFIC DIVISION
ASS'T CITY ENG.

SEWER PLAN & PROFILE
TRACT 4237 SEWER EXTENSION
from Alpine Way to Guadalupe Place
HORIZ. SCALE: 1" = 40'
VERT. SCALE: 1" = 4'

PROJECT NO. S-878
SHEET 1 OF 1
FILE NO.