

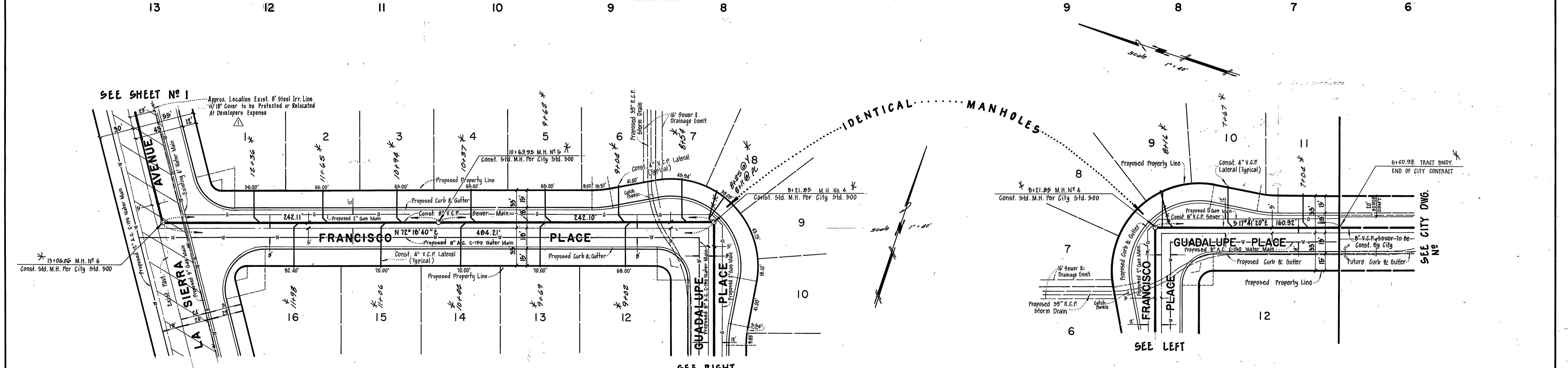
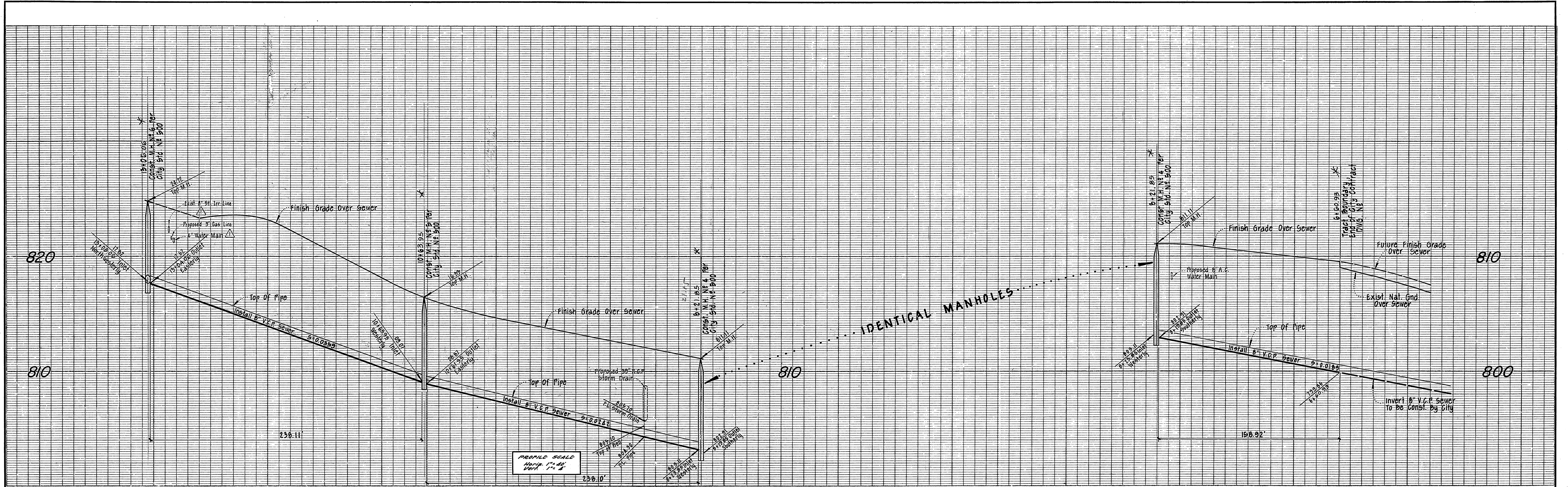
**GENERAL NOTES**

1. Construction shall be in accordance with the Standard Specifications for Public Works Construction, 1970 Edition and Standard Drawings.
2. It shall be the responsibility of the contractor to clear the right-of-way in accordance with the provisions of the law as it affects each utility including irrigation lines and appurtenances and at no cost to the City.
3. Pipe shall be bedded per Case I Standard Drawing No 452.
4. All manholes to be constructed per Standard Drawing No 500.
5. Location of "Tees" and "Laterals" will be determined in the field by the owner or his representative.
6. Prior to trenching, the contractor is to uncover existing sewer pipe and contact the engineer to verify the existing elevation.
7. It shall be the contractor's responsibility to familiarize himself with the jobsite and any underground facilities shown or not shown on these plans. The engineer will not be responsible for any damage to underground facilities.

BENCH MARK: Pk. nail in curb return at the Northeast corner of Alpine Way and La Sierra Ave. ELEV = 198.34

<b>GARNER TEE TRACADAS &amp; TROY INC.</b> CIVIL ENGINEERING - LAND SURVEYING 357 West Second Street San Bernardino, California Phone TU 5-0266 FRANK TRACADAS DATE 3/16/72 R.C.E. 11447	MARK REVISIONS APPR. DATE DESIGNED BY DRAWN BY CHECKED BY	CITY OF RIVERSIDE, CALIFORNIA DEPARTMENT OF PUBLIC WORKS		SEWER PLAN & PROFILE LA SIERRA AVENUE TRACT 4237		PROJECT NO. 5-5
		APPROVED BY OFFICE ENGINEER PARK DEPARTMENT TRAFFIC DIVISION ASS'T. CITY ENG.		APPROVED BY DIRECTOR OF PUBLIC WORKS DATE 3/19/72		SHEET 1 OF 2 FILE NO.

\* AS BUILT KARL 12/15/72



**GARNER TEE TRACADAS & TROY, INC.**  
 CIVIL ENGINEERING · LAND SURVEYING  
 357 West Second Street  
 San Bernardino, California  
 Phone TU 5-0266  
 FRANK TRACADAS R.C.E. 11447

MARK	REVISIONS	APPR. DATE
DESIGNED BY <i>M.H.A.</i>	DRAWN BY <i>EGK</i>	CHECKED BY <i>M.H.A.</i>

**CITY OF RIVERSIDE, CALIFORNIA**  
 DEPARTMENT OF PUBLIC WORKS  
 APPROVED BY \_\_\_\_\_ BY DATE \_\_\_\_\_  
 OFFICE ENGINEER  
 PARK DEPARTMENT  
 TRAFFIC DIVISION  
 ASST. CITY ENG.

**SEWER PLAN & PROFILE**  
 GUADALUPE PLACE  
 FRANCISCO PLACE  
 TRACT NO. 4237  
 HORIZ. SCALE: 1" = 40'  
 VERT. SCALE: 1" = 4'

PROJECT NO. **5-879**  
 SHEET **2** OF **2**  
 FILE NO.

\* AS BUILT EARL 12/15/72  
 Bench Mark: 1/4" nail in curb return at the Northeast corner of Alpine Way and La Sierra Ave. Elevation: 798.34.