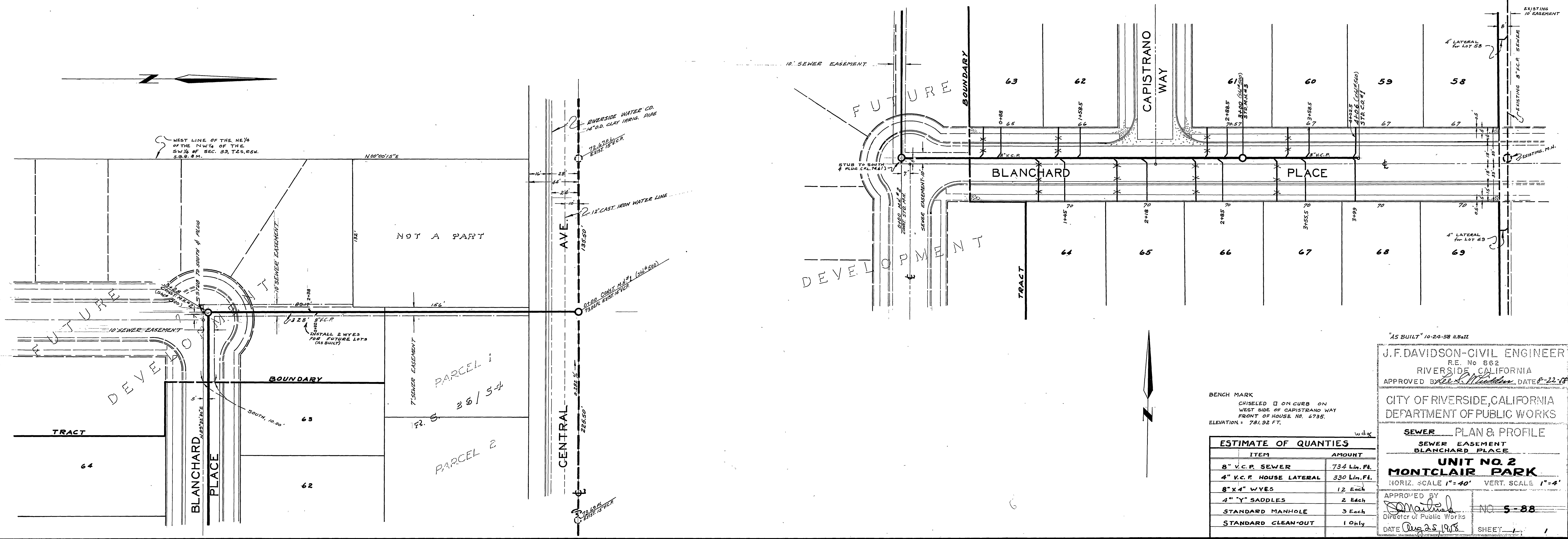


NOTE:  
 Laterals for Lots 58  
 & 69 will be to the Existing  
 Sewer in Montclair Park.  
 M.B. 30/29



BENCH MARK  
 CHISELED  $\square$  ON CURB ON  
 WEST SIDE OF CAPISTRANO WAY  
 FRONT OF HOUSE NO. 6735.  
 ELEVATION = 781.92 FT.

ESTIMATE OF QUANTITIES	
ITEM	AMOUNT
8" V.C.P. SEWER	734 Lin. Ft.
4" V.C.P. HOUSE LATERAL	330 Lin. Ft.
8" x 4" WYES	12 Each
4" " Y" SADDLES	2 Each
STANDARD MANHOLE	3 Each
STANDARD CLEAN-OUT	1 Only

AS BUILT 10-24-58 H.B. II

J.F. DAVIDSON - CIVIL ENGINEER  
 R.E. No 662  
 RIVERSIDE, CALIFORNIA  
 APPROVED BY: *J.F. Davidson* DATE 8-22-58

CITY OF RIVERSIDE, CALIFORNIA  
 DEPARTMENT OF PUBLIC WORKS

SEWER PLAN & PROFILE  
 SEWER EASEMENT  
 BLANCHARD PLACE  
 UNIT NO. 2  
 MONTCLAIR PARK  
 HORIZ. SCALE 1" = 40' VERT. SCALE 1" = 4'

APPROVED BY: *J.F. Davidson* NO 5-88  
 Director of Public Works  
 DATE Aug 25 1958 SHEET 1