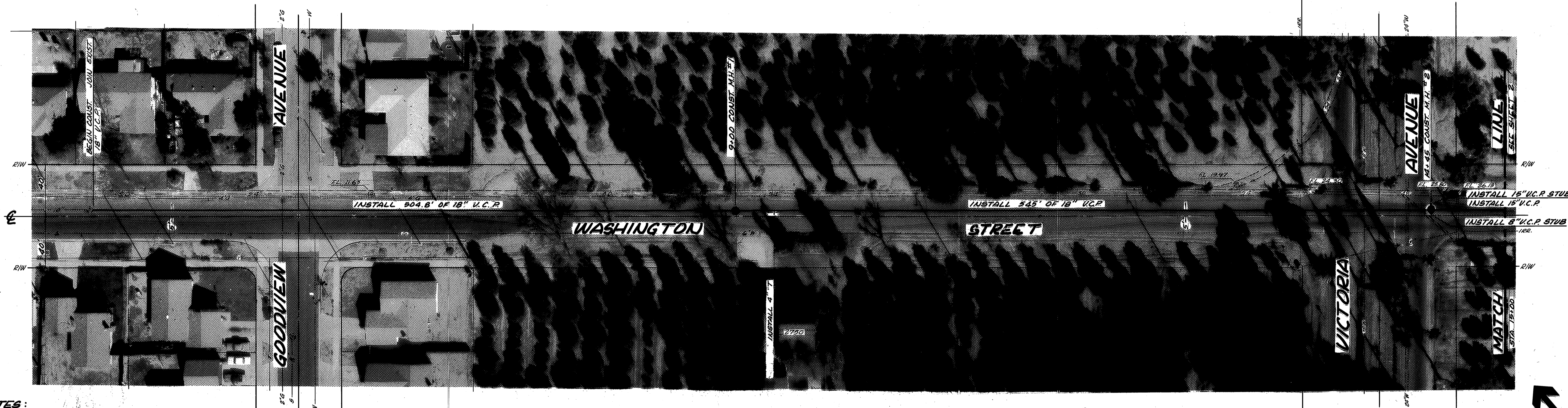


NOTE:  
 0+00 AT INTERSECTION  
 OF LINCOLN AND  
 WASHINGTON AVENUES.

F.B. 981/45-46, 51  
 983/1-3  
 B.M.: P.K. & TAG IN W/LY.  
 CURB RETURN @  
 WASHINGTON & LINCOLN  
 PER C.R. PRECISE  
 LEVEL NET.  
 ELEV.: 912.466

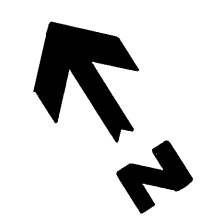
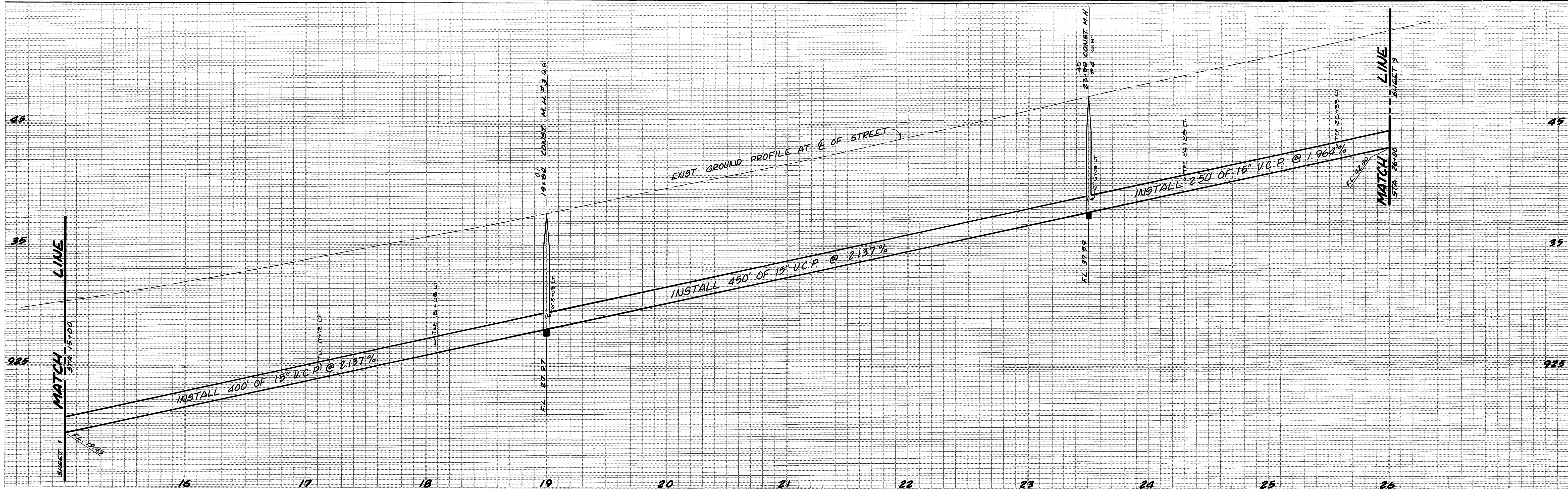


GENERAL NOTES:  
 1. CONSTRUCTION SHALL BE IN ACCORDANCE WITH STANDARD SPECIFICATIONS FOR PUBLIC WORKS CONSTRUCTION, 1970 EDITION.  
 2. THE FOLLOWING STANDARD DRAWINGS APPLY: NO. 500 FOR MANHOLES (M.H. # TO BE 5' DIA.), NO. 452 FOR PIPE BEDDING, NO. 453 FOR RESURFACING, NO. 562 FOR INSTALLING "T'S AND CHIMNEYS".  
 3. EXACT LOCATION OF "T'S AND CHIMNEYS WILL BE DETERMINED DURING CONSTRUCTION.

APPROVED BY GAGE CANAL WATER CO.  
*[Signature]*  
 DATE 7/10/72

★ 'AS BUILT' RAB. 8-75

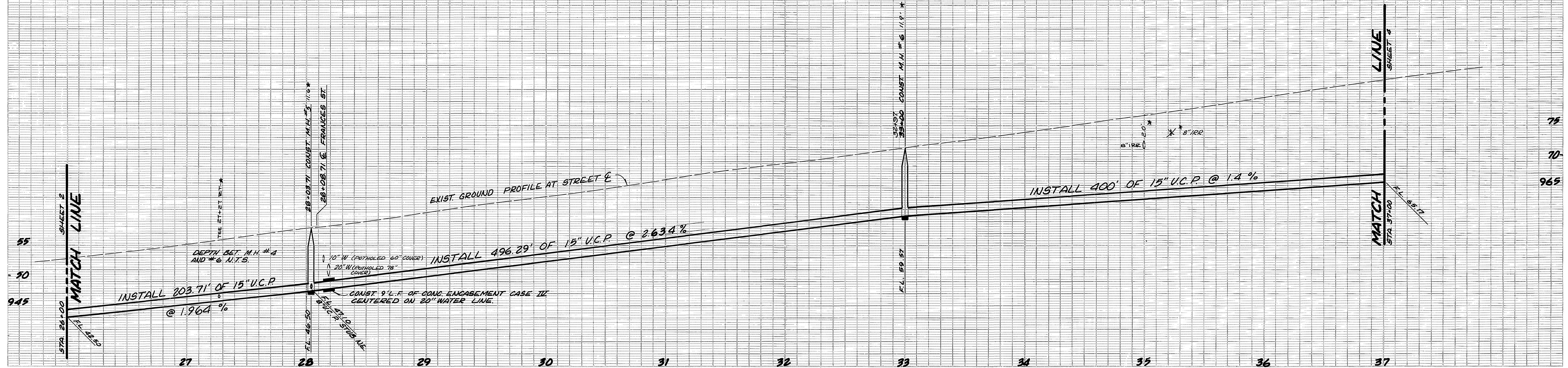
CITY OF RIVERSIDE, CALIFORNIA PUBLIC WORKS DEPARTMENT				WASHINGTON STREET TRUNK SEWER		ACCOUNT No. 32-977-583 DRAWING NUMBER <b>9-880</b>	
APPROVED BY	BY	DATE	APPROVED BY	BY	DATE	FROM: 165' NW'LY OF GOODVIEW AVE. TO: 100' SE'LY OF VICTORIA AVE. SHEET 1 OF 7	
PRINCIPAL ENGINEER	-	-	<i>[Signature]</i>	-	-		
PARK DEPARTMENT	-	-	DIRECTOR OF PUBLIC WORKS	-	-		
MARK	REVISIONS	APPR. DATE	DESIGNED BY	DRAWN BY	CHECKED BY	DATE 8/14/72	HORIZ. SCALE: 1" = 40'



★"AS BUILT" RAB 875

APPROVED BY GAGE CANAL  
WATER CO.  
*[Signature]*  
DATE 7/10/72

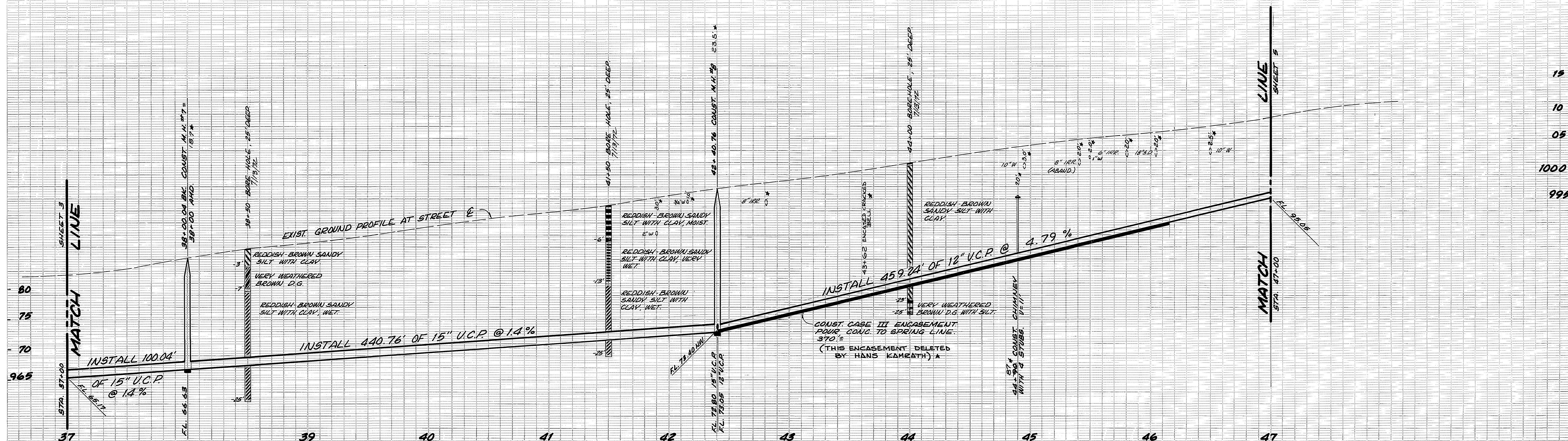
CITY OF RIVERSIDE, CALIFORNIA PUBLIC WORKS DEPARTMENT				WASHINGTON STREET TRUNK SEWER		ACCOUNT No. 32-577-589 DRAWING NUMBER <b>3-880</b>
APPROVED BY	BY	DATE	APPROVED BY	FROM: 160' N/W'LY OF VICTORIA AVE. TO: 210' SE'LY OF FRANCES ST.		SHEET 2 OF 7
PRINCIPAL ENGINEER	-	-	<i>[Signature]</i> DIRECTOR OF PUBLIC WORKS	HORIZ. SCALE: 1" = 40'		VERT. SCALE: 1" = 4'
PARK DEPARTMENT	-	-		DATE 3/14/72		
TRAFFIC DIVISION	-	-				
CHIEF PUB. WKS. ENGR.	-	-				
CHIEF PUB. UTIL. ENGR.	-	-				
DESIGNED BY <i>[Signature]</i>	DRAWN BY <i>[Signature]</i>	CHECKED BY				



★ "AS BUILT" RAB 8-73

APPROVED BY GAGE CANAL  
WATER CO.  
*[Signature]*  
DATE  
7/10/72

CITY OF RIVERSIDE, CALIFORNIA PUBLIC WORKS DEPARTMENT		WASHINGTON STREET TRUNK SEWER		ACCOUNT No. 32-577-589
APPROVED BY PRINCIPAL ENGINEER PARK DEPARTMENT TRAFFIC DIVISION		BY - - -	DATE - - -	DRAWING NUMBER <b>5-880</b>
APPROVED BY <i>[Signature]</i> DIRECTOR OF PUBLIC WORKS		DATE 8/14/72		SHEET 3 OF 7
DESIGNED BY <i>[Signature]</i> , DRAWN BY <i>[Signature]</i> , CHECKED BY <i>[Signature]</i>		HORIZ. SCALE: 1" = 40'		VERT. SCALE: 1" = 8'

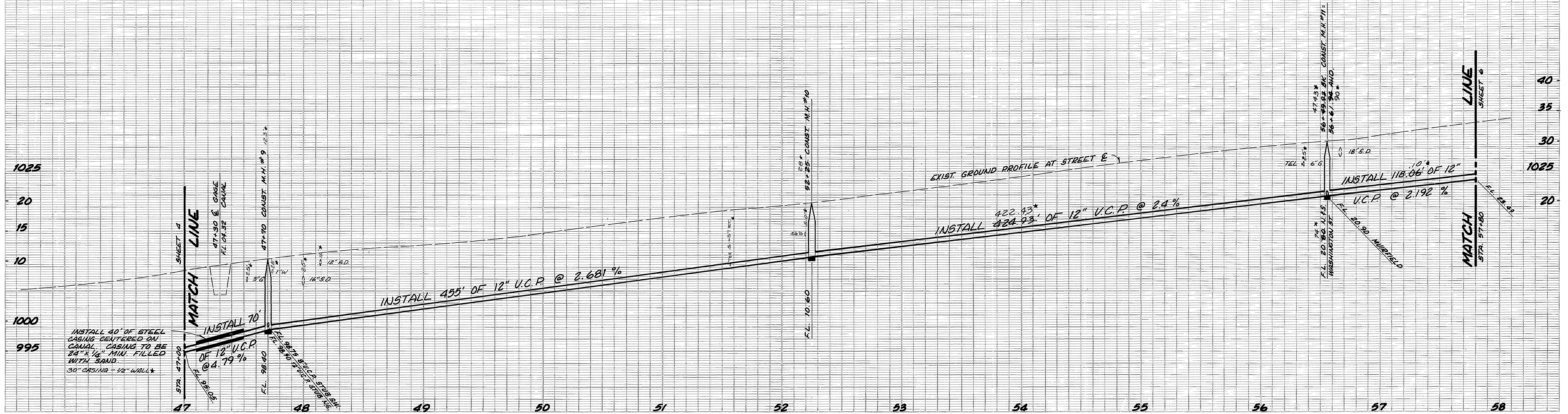


**CURVE DATA**  
 R = 280'  
 Δ = 34° 21' 05"  
 L = 157.81'  
 T = 86.54'  
 CH = 165.37'

\*"AS BUILT" RAB 873

APPROVED BY GAGE CANAL  
 WATER CO.:  
*[Signature]*  
 DATE 7/1/72

① CHANGED LOCATION OF SEWER BECAUSE OF CONFLICT WITH GAS LINE. EARL LOMAS 9/12/72 ② ADDED R/W LINE PER RESOLUTION NO. 11944 EARL LOMAS 3/26/74		CITY OF RIVERSIDE, CALIFORNIA PUBLIC WORKS DEPARTMENT		WASHINGTON STREET TRUNK SEWER		ACCOUNT No. 32-577-583 DRAWING NUMBER <b>5-880</b>
APPROVED BY PRINCIPAL ENGINEER PARK DEPARTMENT TRAFFIC DIVISION CHIEF PUB. WKS. ENGR. CHIEF PUB. UTIL. ENGR.	BY - - - - -	DATE 8/14/72	APPROVED BY <i>William D. Hurd</i> DIRECTOR OF PUBLIC WORKS	FROM: 900' NW'LY OF FRANCES ST. TO: GAGE CANAL		SHEET 4 OF 7
DESIGNED BY: [Signature] DRAWN BY: [Signature] CHECKED BY: [Signature]		DATE: 8/14/72		HORIZ. SCALE: 1" = 40' VERT. SCALE: 1" = 8'		

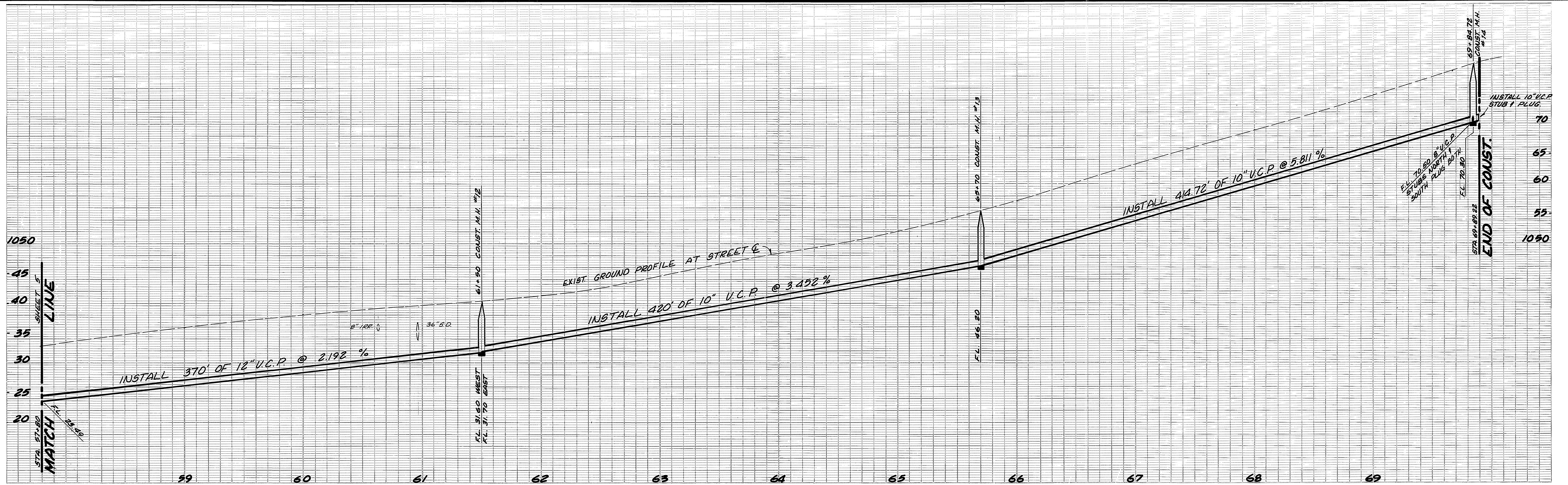


(A) R = 400'  
 D = 50'  
 L = 40.00'  
 T = 20.00'

\*"AS BUILT" RAB 873

APPROVED BY GAGE CANAL  
 WATER CO.  
*[Signature]*  
 DATE 7/17/72

① CHANGED LOCATION OF SEWER BECAUSE OF CONFLICT WITH GAS LINE. SEE PLAN. 8/12/72				CITY OF RIVERSIDE, CALIFORNIA PUBLIC WORKS DEPARTMENT				WASHINGTON STREET TRUNK SEWER		ACCOUNT No. 52-577-983 DRAWING NUMBER <b>5-880</b>	
APPROVED BY	BY	DATE	APPROVED BY	BY	DATE	FROM: GAGE CANAL TO: MUIRFIELD RD.		HORIZ. SCALE: 1" = 40' VERT. SCALE: 1" = 8'		SHEET 5 OF 7	
PRINCIPAL ENGINEER	-	-	W. D. [Signature]	-	-						
PARK DEPARTMENT	-	-	DIRECTOR OF PUBLIC WORKS	-	-						
MARK	REVISIONS	APPR.	DATE	CHIEF PUB. WKS. ENGR.	DATE						
DESIGNED BY	W. J. [Signature]	DRAWN BY	K. [Signature]	CHEF PUB. WKS. ENGR.	8/14/72						

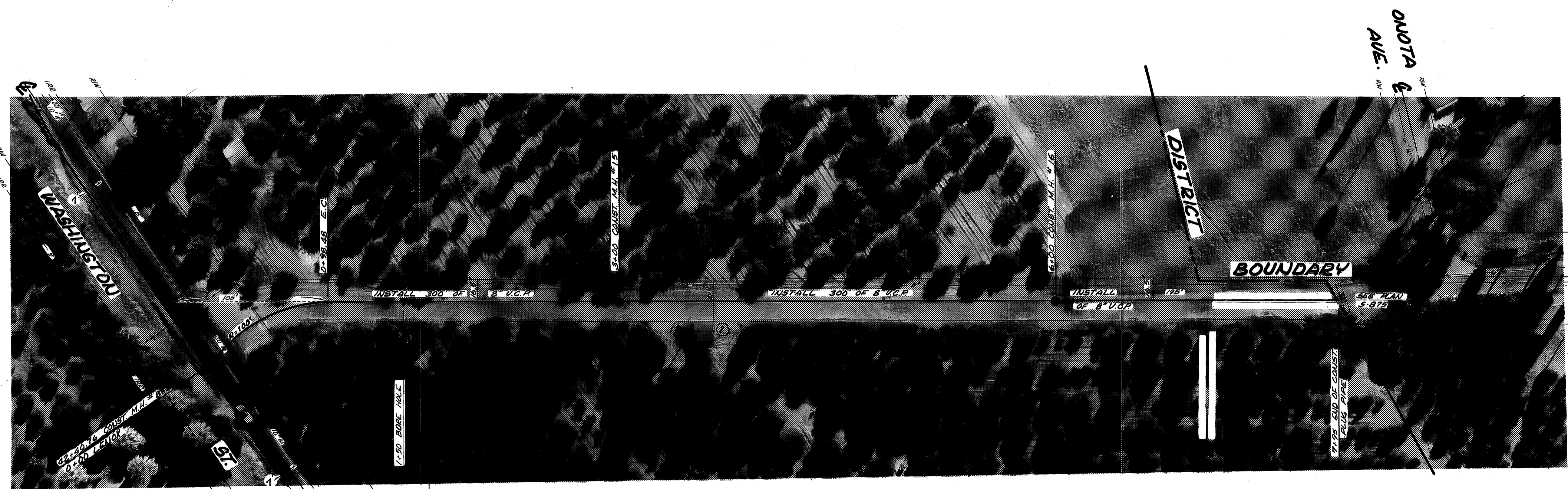


R = 402.25  
 Δ = 64° 21' 33"  
 L = 45.09'



\* "AS BUILT" RAB 8-73

CITY OF RIVERSIDE, CALIFORNIA PUBLIC WORKS DEPARTMENT				WASHINGTON STREET TRUNK SEWER		ACCOUNT No. 32-577-583 DRAWING NUMBER <b>5-880</b>
APPROVED BY	BY	DATE	APPROVED BY	BY	DATE	FROM: 100' E'LY OF WASHINGTON ST. TO: WHITEGATE AVE. ON MUIRFIELD RD.
PRINCIPAL ENGINEER	-	-	William D. Gardner	-	-	SHEET 6 OF 7
PARK DEPARTMENT	-	-	DIRECTOR OF PUBLIC WORKS	-	-	
TRAFFIC DIVISION	-	-		-	-	
CHIEF PUB. WKS. ENGR.	-	-		-	-	
DESIGNED BY: <i>UOMA</i>	DRAWN BY: <i>2202</i>	CHECKED BY:	CHIEF PUB. WKS. ENGR. <i>HXC</i>	DATE: 8/14/72	HORIZ. SCALE: 1" = 40'	VERT. SCALE: 1" = 8'



**CURVE DATA**  
 R = 100'  
 Δ = 56° 25' 28"  
 L = 98.48'  
 T = 33.65'

★ "AS BUILT" RAB 8-73

APPROVED BY GAGE CAVAL  
 WATER CO.  
*[Signature]*  
 DATE 7/10/72

② ADDED R/W LINE PER RESOLUTION NO. 11944 ENCL. 11/24/71 W.C. 9.26.72		CITY OF RIVERSIDE, CALIFORNIA PUBLIC WORKS DEPARTMENT		ACCOUNT No. 92-577-583 DRAWING NUMBER <b>5-880</b>	
APPROVED BY PRINCIPAL ENGINEER TRAFFIC DIVISION CHIEF PUB. WKS. ENGR.	BY - - -	DATE - - -	APPROVED BY <i>[Signature]</i> DIRECTOR OF PUBLIC WORKS	WASHINGTON STREET TRUNK SEWER LENOX AVENUE EASEMENT BETWEEN WASHINGTON ST. & ONOTA AVE.	
MARK REVISIONS DESIGNED BY <i>[Signature]</i>	APPR. DATE - - -	CHECKED BY <i>[Signature]</i>	DATE 8/14/72	SHEET 7 OF 7 HORIZ. SCALE: 1" = 40' VERT. SCALE: 1" = 4'	

