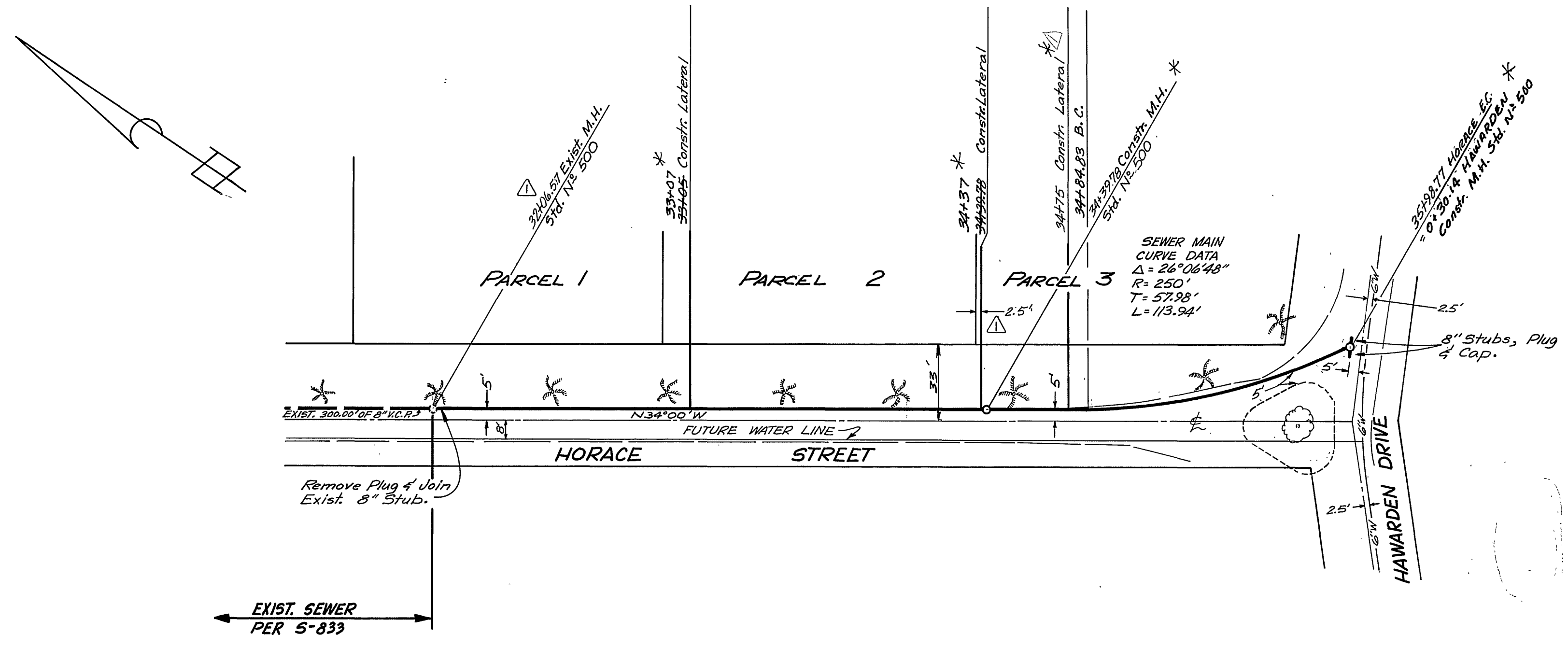
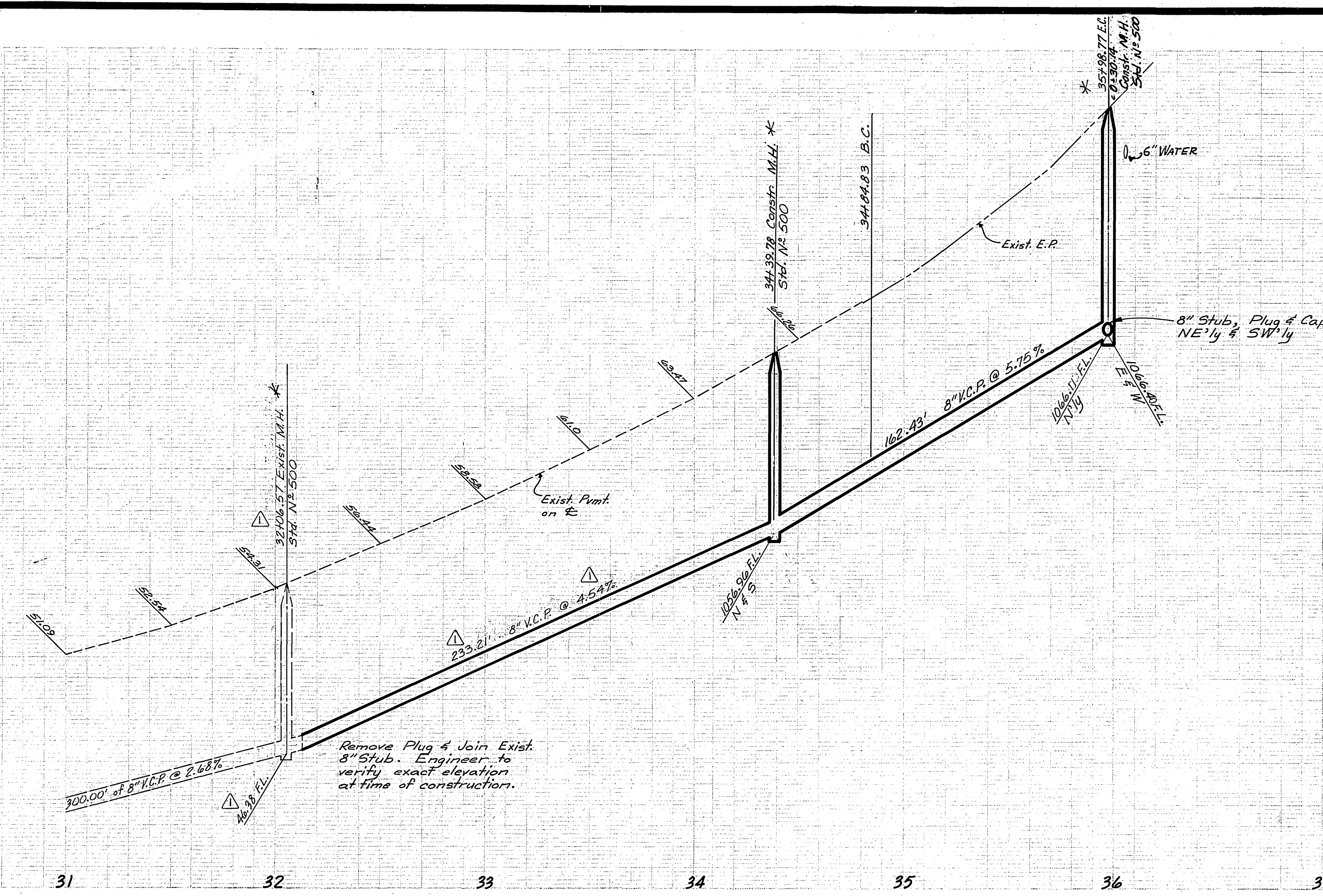


1070  
1068  
1066  
1064  
1062  
1060  
1058  
1056  
1054  
1052  
1050



B.M. : Rim of capped monument at intersection Horace Street & Victoria Avenue per City of Riverside Drawing R-727. Elev. = 973.69

T.B.M. (This project only) 5.4T. in lead on rock at SW corner of Horace Street & Hawarden Drive. J.F.D. F.B. 834/40. Elev. = 1074.09

- GENERAL NOTES:**
- All construction to be in accordance with the Standard Specification for Public Works Construction 1970 Edition and Standard Drawings of the City of Riverside, Department of Public Works.
  - Laterals to be located as shown or as directed in the field by the owner.
  - M.H. Rims to be set at existing pavement grades.

\* AS BUILT KARL 12/18/72

<b>J. F. DAVIDSON ASSOCIATES</b> CIVIL ENGINEERS - SURVEYORS - PLANNERS RIVERSIDE, CALIFORNIA		CITY OF RIVERSIDE, CALIFORNIA DEPARTMENT OF PUBLIC WORKS		INDEXED T.M. PROJECT NO.
APPROVED BY: <i>Howard A. Crean</i> 5-4-72 UTILITY ENGINEER DATE	APPROVED BY: <i>Robert S. Ripper</i> DATE 1-20-72 ROBERT S. RIPPER R.E. No. 136255	OFFICE ENGINEER PARK DEPARTMENT TRAFFIC DIVISION ASSISTANT CITY ENG.	APPROVED BY: <i>William D. Harlan</i> DIRECTOR OF PUBLIC WORKS DATE 5/19/72	SEWER PLAN & PROFILE HORACE STREET BETWEEN APPIAN WAY & HAWARDEN DRIVE P.M. 48 SHEET 1 OF 1
W.O. 3011 FOR: R.S. White F.B. 11/17/71	DESIGNED BY: AW DRAWN BY: M.C. CHECKED BY: L.L.	REVISIONS 1 Revised M.H. Location to Exist. Condition 5/19/72	DATE 5/19/72	FILE NO. 4417