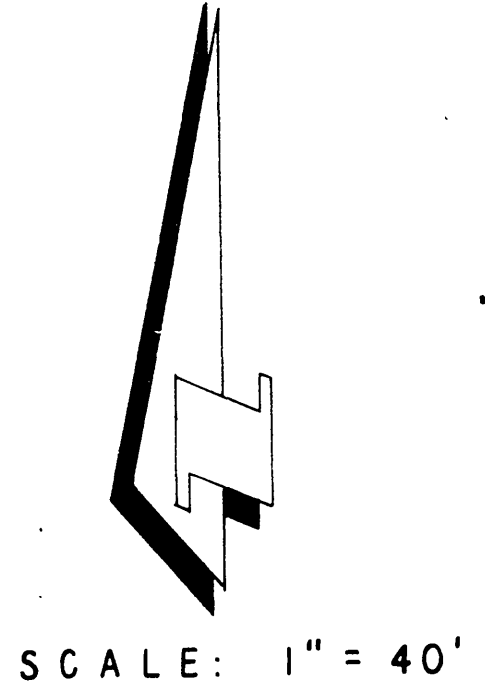


R. S. 52/13

TRACT 4351

GENERAL NOTES

1. Construction shall be in accordance with the City of Riverside, Department of Public Works, Standard Drawings and the Standard Specifications for Public Works Construction, 1970 Edition.
2. It shall be the responsibility of the contractor to clear the right of way in accordance with the provisions of the law as it affects each utility including irrigation lines and appurtenances and at no cost to the City.
3. Pipe shall be installed per Case 1, Standard Drawing No. 452, unless otherwise specified on plan.
4. Location of manholes and laterals to be located at owners direction.
5. All stubs and laterals to be constructed in accordance with Standard Drawing No. 562. Stubs shall be plugged and capped.
6. Manhole frames and covers to be set to proposed pavement grades. Laterals are to be 4" and extended to property line.
7. For the construction of sewer, Contractor is to expose existing sewer and contact Engineer for verification of existing elevations on Arlington Avenue.



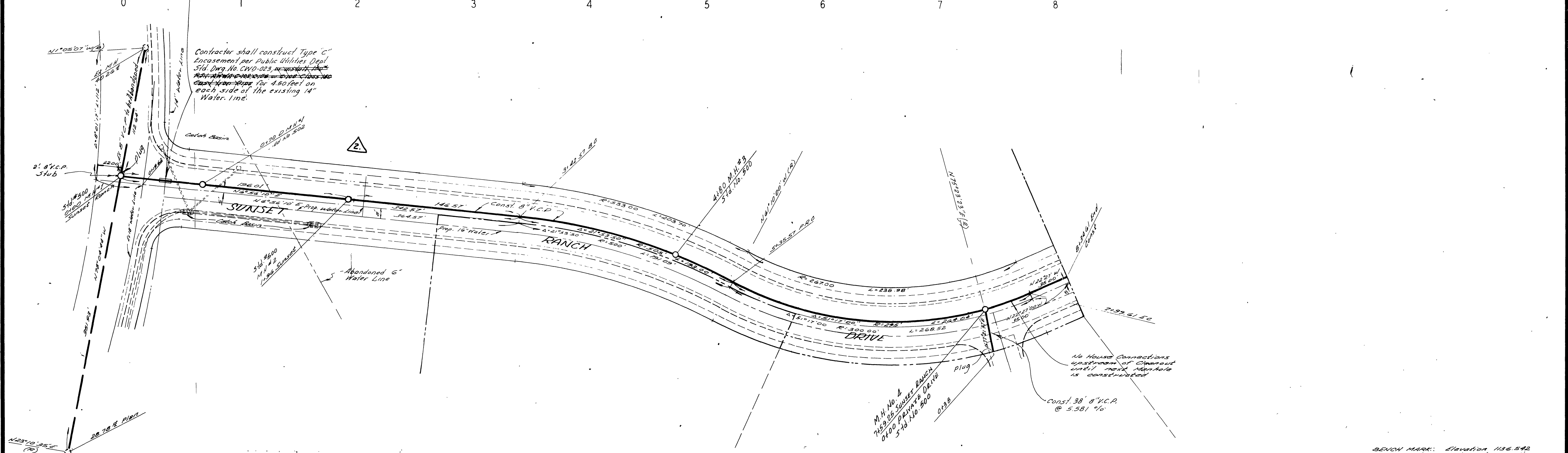
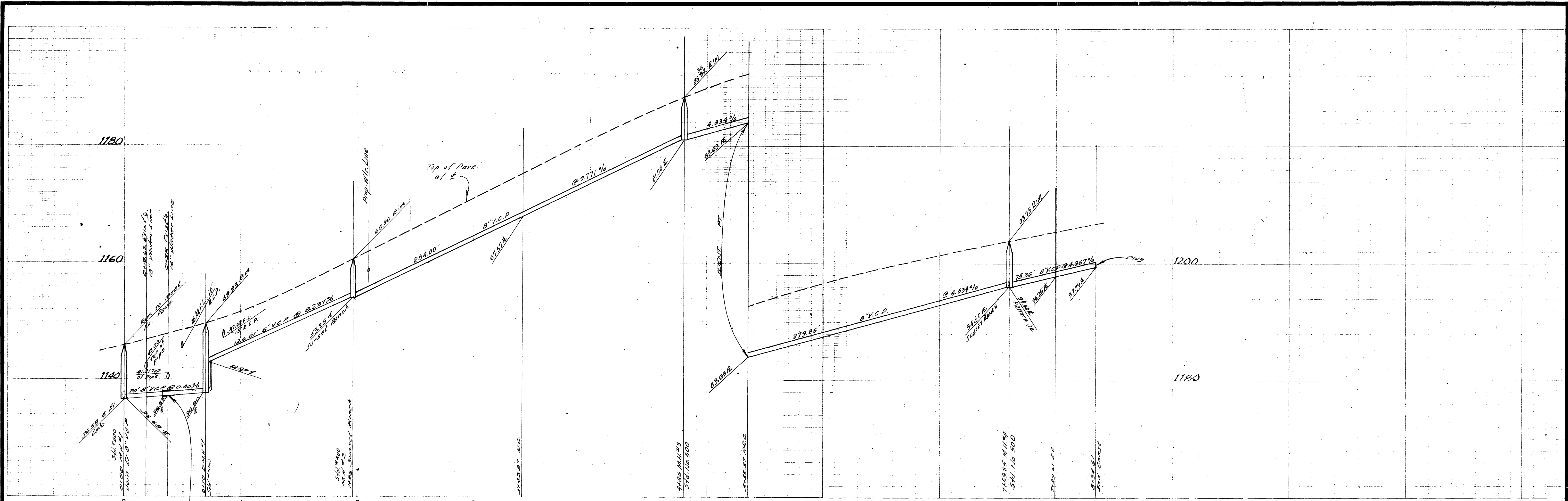
SCALE: 1" = 40'

BENCH MARK: Elevation 1136.342
 P.M. on curb roadway S.E. corner Chicago, Arlington and Massena B.M. No. 87-C
 City of Riverside.

*AS BUILT KARL 12/18/72

Approved By: *[Signature]*
 General Superintendent / Chief Engineer - Water Dept.
 Date: 11-24-71

ALBERT A. WEBB ASSOCIATES CIVIL ENGINEERS RIVERSIDE, CALIFORNIA APPROVED BY: <i>[Signature]</i> DATE: 10/25/71 R.E. No. 9876		CITY OF RIVERSIDE, CALIFORNIA PUBLIC WORKS DEPARTMENT BY: <i>[Signature]</i> DATE: 11-24-71 Principal Engineer Chief Pub. Wks. Eng.		SEWER PLAN AND PROFILE INDEX SUNSET RANCH DRIVE SEWER EXTENSION TO TRACT 4351 SHEET 1 OF 2 FILE NO. 71-230-B	
W.O. 71-230 FOR: SAM HARMATZ F.B. 1022		DESIGNED BY: <i>[Signature]</i> DRAWN BY: <i>[Signature]</i> CHECKED BY: <i>[Signature]</i>		DATE: 2-3-72 HORIZ. SCALE: 1" = 40' VERT. SCALE: 1" = 4'	



Contractor shall construct Type "C" Encasement per Public Utilities Dept. Std. DWG. No. CWD-023, or equivalent. ~~Not to be used for 4.50 feet on each side of the existing 14" Water line.~~

Approved By: *[Signature]*
General Superintendent / Chief Engineer - Water Dept.
Date: 2-2-71

BEVCH MARK: Elevation 1186.542
AK nail on curb Return 5' E
cont Chicago, Madison and
Assessment BM No 87-C
City of Riverside

ALBERT A. WEBB ASSOCIATES CIVIL ENGINEERS RIVERSIDE, CALIFORNIA APPROVED BY: <i>[Signature]</i> DATE: 10/20/71 R.E. No. 9876		CITY OF RIVERSIDE, CALIFORNIA PUBLIC WORKS DEPARTMENT APPROVED BY: <i>[Signature]</i> PRINCIPAL ENGINEER PARK DEPARTMENT TRAFFIC DIVISION CHIEF PUB. WKS. ENGR.		SEWER PLAN AND PROFILE SUNSET RANCH DRIVE SEWER EXTENSION TO TRACT 4351 SCALE: HORIZ. 1" = 40' VERT. 1" = 8' ACCOUNT No. 71-230 DRAWING NUMBER S-885 SHEET 2 OF 2 71-230-B	
W.O. 71-230 FOR: SAM HARMATZ F.B. 1022		DESIGNED BY: REC DRAWN BY: H.L.M. CHECKED BY: BB		REVISIONS: <i>[Table with 3 columns: MARK, REVISIONS, DATE]</i>	

* AS BUILT KARL 12/17/72